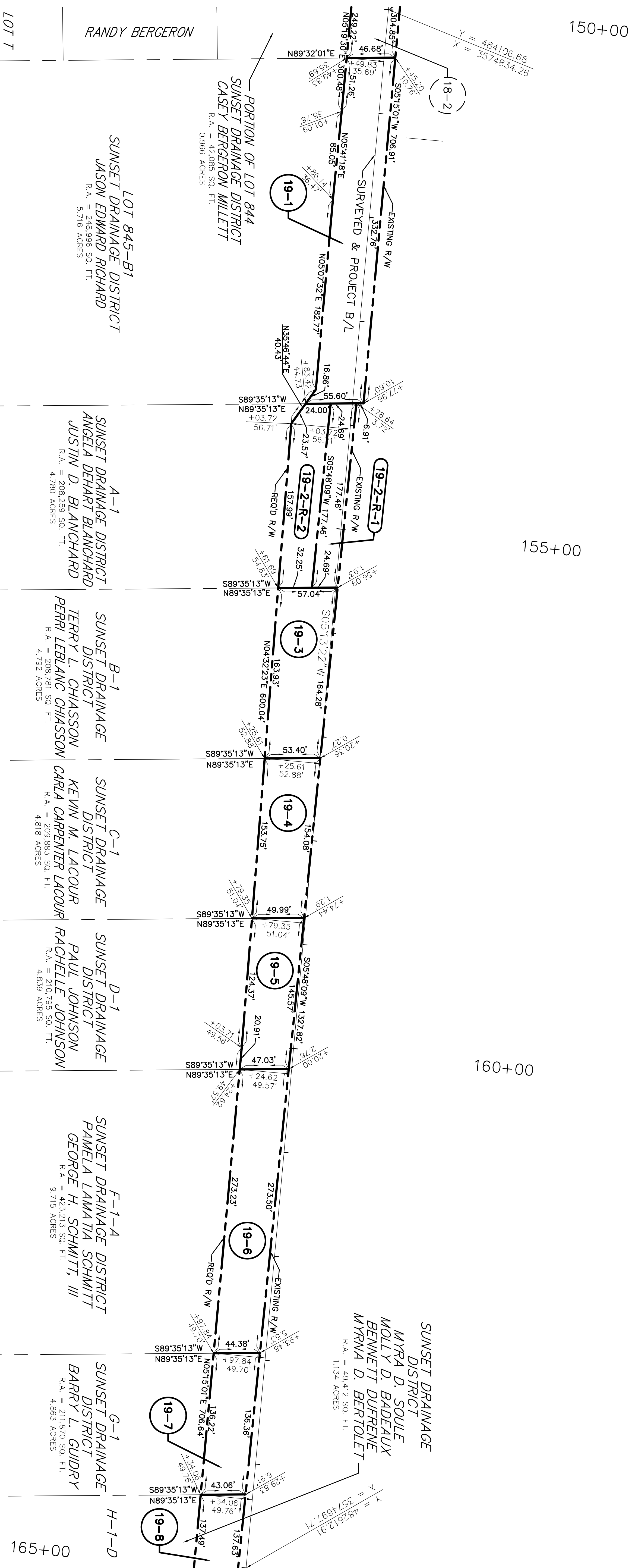


SOUTHEASTERN LAND DISTRICT
WEST OF THE MISSISSIPPI RIVER
T 14 S - R 20 E
SECTION 26



- LEGEND**
- REQUIRED RIGHT OF WAY LINE
 - PROPERTY LINE
 - LOT LINE
 - LIMITS OF CONSTRUCTION
 - EXISTING RIGHT OF WAY LINE
 - SECTION LINE
 - DRAINAGE SERVITUDE
 - EXISTING SERVITUDE

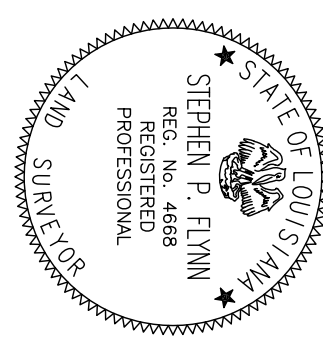
PARCEL	OWNER	ACQUISITION	AREA	ESTATE TYPE
19-8	MYRA D. SOULE, MOLLY D. BADEAUX, BENNETT DUFRÈNE & MYRYA D. BERTOLET	C.O.B. 710 PG. 103 ENTRY NO. 340804	0.133 AC.	SERVITUDE
19-7	BARRY L. GUIDRY	C.O.B. 607 PG. 403 ENTRY NO. 270408	0.136 AC.	SERVITUDE
19-6	PAMELA LAMATIA SCHMITT & GEORGE H. SCHMITT, III	C.O.B. 492 PG. 582 ENTRY NO. 192860	0.285 AC.	SERVITUDE
19-5	PAUL JOHNSON & RACHELLE JOHNSON	C.O.B. 720 PG. 623 ENTRY NO. 346706	0.161 AC.	SERVITUDE
19-4	KEVIN M. LACOUR & CARLA CARPENTIER LACOUR	C.O.B. 481 PG. 464 ENTRY NO. 185077	0.182 AC.	SERVITUDE
19-3	TERRY L. CHIASSON & PERRI LEBLANC CHIASSON	C.O.B. 475 PG. 126 ENTRY NO. 181339	0.207 AC.	SERVITUDE
19-2-R-2	ANGELA DEHART BLANCHARD & JUSTIN D. BLANCHARD	C.O.B. 734 PG. 709 ENTRY NO. 355572	0.136 AC.	SERVITUDE
19-2-R-1	ANGELA DEHART BLANCHARD & JUSTIN D. BLANCHARD	C.O.B. 734 PG. 709 ENTRY NO. 355572	0.100 AC.	FEE
19-1	JASON EDWARD RICHARD	C.O.B. 671 PG. 484 ENTRY NO. 319456	0.359 AC.	SERVITUDE

ELEVATIONS OR COORDINATES BASED ON:
DESIGNATION: BA01 SMO1
PID: DH3816
STATE/COUNTY: LA/ST. CHARLES PARISH
USGS QUAD: LULUNG (1992)
NAD 83 (2007): 295501.64(N) 9071858.55(W) ADJUSTED
NAVD 88: 1.74 (METERS) 5.70 (FEET)
GPS OBS: 2006.81
RETRIEVAL DATE: DECEMBER 8, 2010
BEARINGS SHOWN HEREON ARE GRID BEARINGS BASED ON THE LOUISIANA STATE PLANE COORDINATE SYSTEM SOUTH ZONE NAD 83 (2007).

I CERTIFY THAT THIS PLAN REPRESENTS AN ACTUAL ROUTE SURVEY MADE BY ME, OR BY THOSE UNDER MY DIRECTION AND COMPLEES WITH THE REQUIREMENTS OF LOUISIANA'S "STANDARDS OF PRACTICE FOR BOUNDARY SURVEYS" FOR A CLASS D ROUTE SURVEY SPECIFICALLY CHAPTER 2909 - ROUTE SURVEY.

RESIDUAL ACREAGE NOTE
RESIDUAL ACREAGE'S SHOWN ARE CALCULATED FOR INFORMATION PURPOSES ONLY.
THE RESIDUAL ACREAGE'S ARE SUBJECT TO REVIEW AND VERIFICATION BY TITLE AND SURVEY.

DATE	DESCRIPTION	BY	REVISIONS
08/04/16	REVISED PARCEL 19-2 INTO PARCEL 19-2-R-1 & PARCEL 19-2-R-2	TP1	



LAFOURCHE BASIN LEVEL DISTRICT AND PARISH OF ST. CHARLES

RIGHT OF WAY MAP
WEST BANK HURRICANE PROTECTION LEVEE
SUNSET DRAINAGE DISTRICT LEVEE
ST. CHARLES PARISH, LOUISIANA
STA. 830+00.00 TO 962+07.17 (NORTH SECTION)
10+00.00 TO 310+00.00 (SOUTH SECTION)

RIVERLANDS SURVEYING COMPANY
905 HUNTERS STREET
LAFAYETTE, LA 70503
905-281-4982
1-800-249-6982

Stephen P. Flynn
REGISTERED PROFESSIONAL SURVEYOR
L.A. ST. REG. NO. 4668

DATE: 10/6/2015 100%
SCALE: 1" = 50'
DRAWN BY: T.P.T.
COMPUTED BY: S.R.F.
SHEET NO. 19