

Notes:
 * Width measured from water's edge
 at -9.5 ft mean sea level

Disclaimer:
 This map does not represent a survey map of any kind.
 This map has been carefully prepared from official records,
 maps, engineering data, photographs and/or other information,
 which is provided as a courtesy only. We make no warranties
 as to its completeness or accuracy, whether express or implied

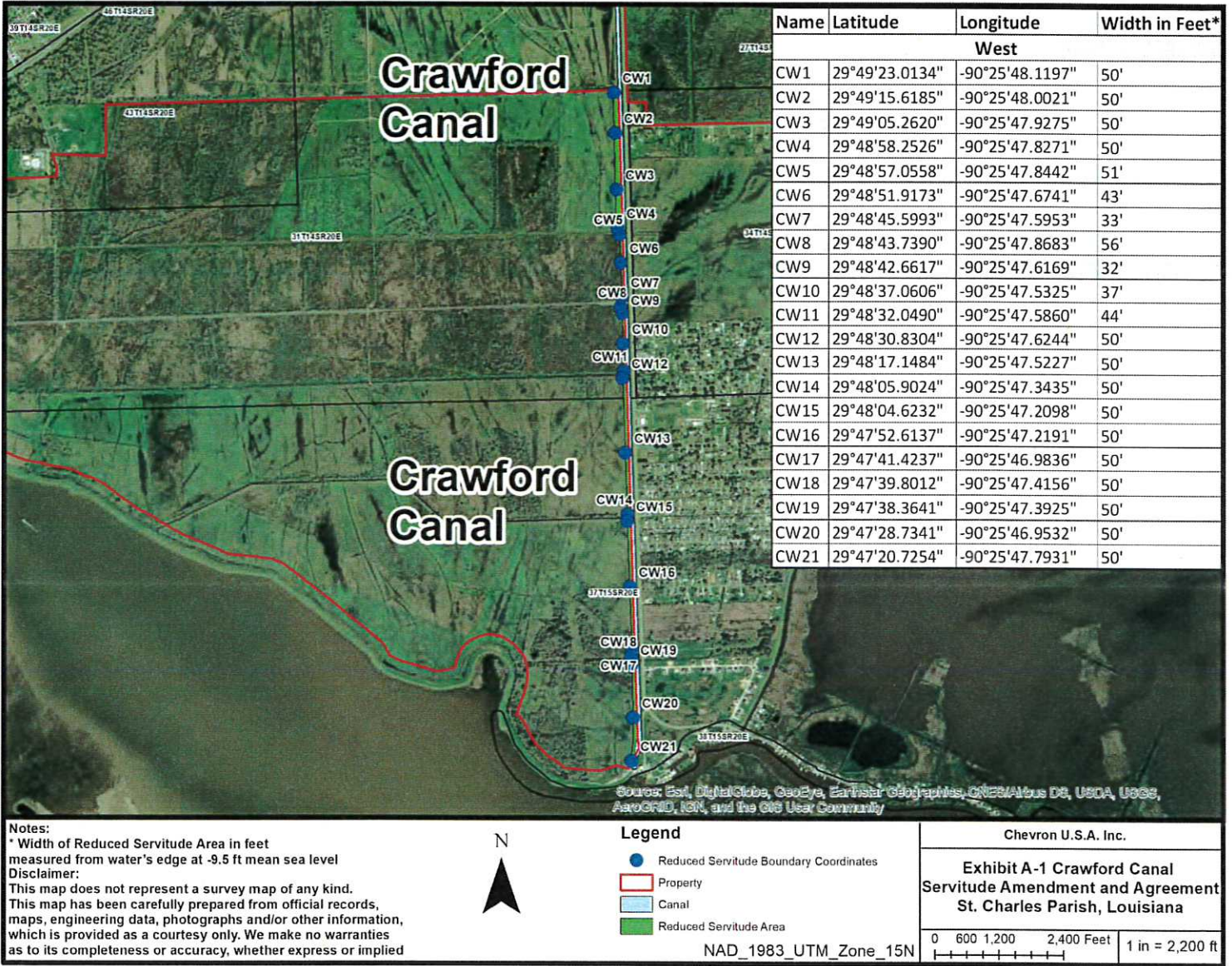


Legend

- Canals
- Property

NAD_1983_UTM_Zone_15N

Chevron U.S.A. Inc.		
Exhibit A		
Servitude Amendment and Agreement		
Sections 10, 15, 22, 23, 26, 27, 31, 32, 33, 34, 35, 38,		
39, 43 T14S-R20E Sections 4, 5, 6, 9, T15S-R20E		
St. Charles Parish, Louisiana		
0 0.275 0.55 1.1 Miles	1 in = 1 miles	
----- ----- ----- ----- -----		



Name	Latitude	Longitude	Width in Feet*
		West	
CW1	29°49'23.0134"	-90°25'48.1197"	50'
CW2	29°49'15.6185"	-90°25'48.0021"	50'
CW3	29°49'05.2620"	-90°25'47.9275"	50'
CW4	29°48'58.2526"	-90°25'47.8271"	50'
CW5	29°48'57.0558"	-90°25'47.8442"	51'
CW6	29°48'51.9173"	-90°25'47.6741"	43'
CW7	29°48'45.5993"	-90°25'47.5953"	33'
CW8	29°48'43.7390"	-90°25'47.8683"	56'
CW9	29°48'42.6617"	-90°25'47.6169"	32'
CW10	29°48'37.0606"	-90°25'47.5325"	37'
CW11	29°48'32.0490"	-90°25'47.5860"	44'
CW12	29°48'30.8304"	-90°25'47.6244"	50'
CW13	29°48'17.1484"	-90°25'47.5227"	50'
CW14	29°48'05.9024"	-90°25'47.3435"	50'
CW15	29°48'04.6232"	-90°25'47.2098"	50'
CW16	29°47'52.6137"	-90°25'47.2191"	50'
CW17	29°47'41.4237"	-90°25'46.9836"	50'
CW18	29°47'39.8012"	-90°25'47.4156"	50'
CW19	29°47'38.3641"	-90°25'47.3925"	50'
CW20	29°47'28.7341"	-90°25'46.9532"	50'
CW21	29°47'20.7254"	-90°25'47.7931"	50'

Notes:
 * Width of Reduced Servitude Area in feet measured from water's edge at -9.5 ft mean sea level
 Disclaimer:
 This map does not represent a survey map of any kind. This map has been carefully prepared from official records, maps, engineering data, photographs and/or other information, which is provided as a courtesy only. We make no warranties as to its completeness or accuracy, whether express or implied



Legend

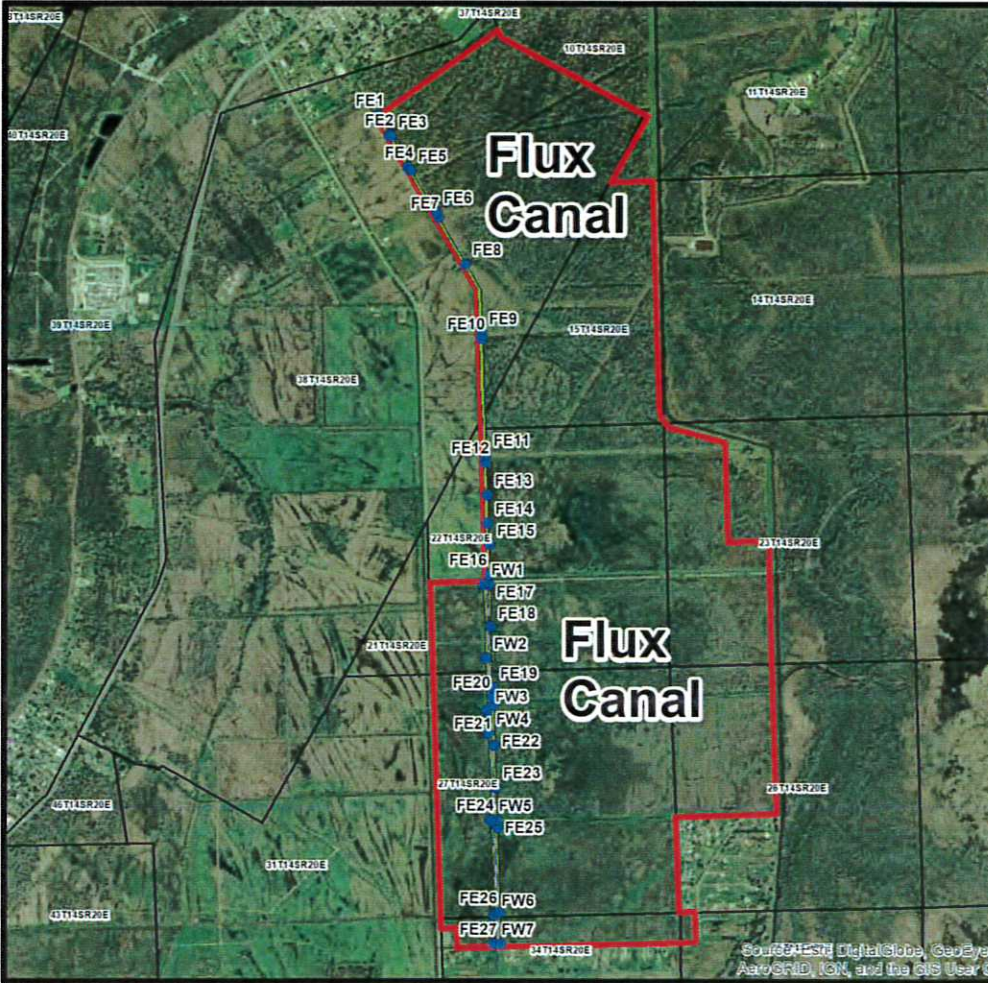
- Reduced Servitude Boundary Coordinates
- Property
- Canal
- Reduced Servitude Area

NAD_1983_UTM_Zone_15N

Chevron U.S.A. Inc.

**Exhibit A-1 Crawford Canal
 Servitude Amendment and Agreement
 St. Charles Parish, Louisiana**

0 600 1,200 2,400 Feet 1 in = 2,200 ft



Name	Latitude	Longitude	Width in Feet*
East			
FE1	29°52'15.2125"	-90°25'57.2116"	50'
FE2	29°52'11.3510"	-90°25'54.4305"	50'
FE3	29°52'10.8755"	-90°25'54.1548"	50'
FE4	29°52'04.3122"	-90°25'50.0246"	42'
FE5	29°52'03.5778"	-90°25'49.3943"	50'
FE6	29°51'54.5306"	-90°25'43.2302"	50'
FE7	29°51'53.3876"	-90°25'42.5853"	50'
FE8	29°51'43.2696"	-90°25'36.2594"	50'
FE9	29°51'28.4811"	-90°25'32.6124"	50'
FE10	29°51'27.3587"	-90°25'32.6076"	50'
FE11	29°51'02.3837"	-90°25'32.2389"	50'
FE12	29°51'00.7449"	-90°25'32.3060"	41'
FE13	29°50'53.8077"	-90°25'32.1011"	56'
FE14	29°50'47.7197"	-90°25'32.0948"	54'
FE15	29°50'43.1739"	-90°25'31.7623"	59'
FE16	29°50'36.7001"	-90°25'31.8566"	48'
FE17	29°50'34.5830"	-90°25'32.0322"	35'
FE18	29°50'25.5113"	-90°25'31.8887"	36'
FE19	29°50'12.4815"	-90°25'31.6964"	41'
FE20	29°50'10.4098"	-90°25'31.6466"	43'
FE21	29°50'08.6823"	-90°25'31.7146"	38'
FE22	29°50'00.0915"	-90°25'31.6151"	36'
FE23	29°49'51.0288"	-90°25'31.4255"	38'
FE24	29°49'44.1150"	-90°25'31.3772"	37'
FE25	29°49'42.4900"	-90°25'31.2134"	47'
FE26	29°49'24.2405"	-90°25'31.0658"	42'
FE27	29°49'17.5645"	-90°25'30.9162"	41'
West			
FW1	29°50'34.6395"	-90°25'33.3856"	51'
FW2	29°50'18.8492"	-90°25'33.1548"	45'
FW3	29°50'07.4259"	-90°25'33.1149"	54'
FW4	29°50'02.6123"	-90°25'32.9332"	43'
FW5	29°49'44.0486"	-90°25'32.7803"	52'
FW6	29°49'23.7720"	-90°25'32.5076"	51'
FW7	29°49'17.5976"	-90°25'32.6573"	66'

Notes:
 * Width of Reduced Servitude Area in feet measured from water's edge at -9.5 ft mean sea level
Disclaimer:
 This map does not represent a survey map of any kind. This map has been carefully prepared from official records, maps, engineering data, photographs and/or other information, which is provided as a courtesy only. We make no warranties as to its completeness or accuracy, whether express or implied



Legend

- Reduced Servitude Boundary Coordinates
- Property
- Canal
- Reduced Servitude Area

NAD_1983_UTM_Zone_15N

Chevron U.S.A. Inc.

**Exhibit A-2 Flux Canal
 Servitude Amendment and Agreement
 St. Charles Parish, Louisiana**

0 800 1,600 3,200 Feet
 1 in = 3,100 ft



Name	Latitude	Longitude	Width in Feet*
North			
3N1	29°51'54.5306"	-90°25'43.2302"	50'
3N2	29°51'54.5948"	-90°25'34.1862"	50'
3N3	29°51'54.7303"	-90°25'20.7554"	50'
3N4	29°51'54.7884"	-90°25'11.2357"	50'
South			
3S1	29°51'53.3876"	-90°25'42.5853"	50'
3S2	29°51'53.5770"	-90°25'34.2107"	50'
3S3	29°51'53.5770"	-90°25'20.9130"	50'
3S4	29°51'53.6848"	-90°25'11.2387"	50'

Source: Esri, DigitalGlobe, GeoEye, Earthstar Geographics, CNES/Airbus DS, USDA, USGS, AeroGRID, IGN, and the GIS User Community

Notes:
 * Width of Reduced Servitude Area in feet measured from water's edge at -9.5 ft mean sea level
Disclaimer:
 This map does not represent a survey map of any kind. This map has been carefully prepared from official records, maps, engineering data, photographs and/or other information, which is provided as a courtesy only. We make no warranties as to its completeness or accuracy, whether express or implied



Legend

- Reduced Servitude Boundary Coordinates
- Property
- Canal
- Reduced Servitude Area

NAD_1983_UTM_Zone_15N

Chevron U.S.A. Inc.

**Exhibit A-3 Canal 3
 Servitude Amendment and Agreement
 St. Charles Parish, Louisiana**

0 140 280 560 Feet | 1 in = 500 ft



Name	Latitude	Longitude	Width in Feet*
North			
4N1	29°51'28.4811"	-90°25'32.6124"	50'
4N2	29°51'28.6917"	-90°25'19.8655"	50'
4N3	29°51'28.7343"	-90°25'10.0802"	50'
4N4	29°51'28.8503"	-90°24'58.5214"	50'
South			
4S1	29°51'27.3587"	-90°25'32.6076"	50'
4S2	29°51'27.5013"	-90°25'19.8673"	50'
4S3	29°51'27.5879"	-90°25'10.0824"	50'
4S4	29°51'27.7418"	-90°24'58.7087"	50'

Source: Esri, DigitalGlobe, GeoEye, Earthstar Geographics, CNES/Airbus DS, USDA, USGS, AeroGRID, IGN, and the GIS User Community

Notes:
 * Width of Reduced Servitude Area in feet measured from water's edge at -9.5 ft mean sea level
Disclaimer:
 This map does not represent a survey map of any kind. This map has been carefully prepared from official records, maps, engineering data, photographs and/or other information, which is provided as a courtesy only. We make no warranties as to its completeness or accuracy, whether express or implied



Legend

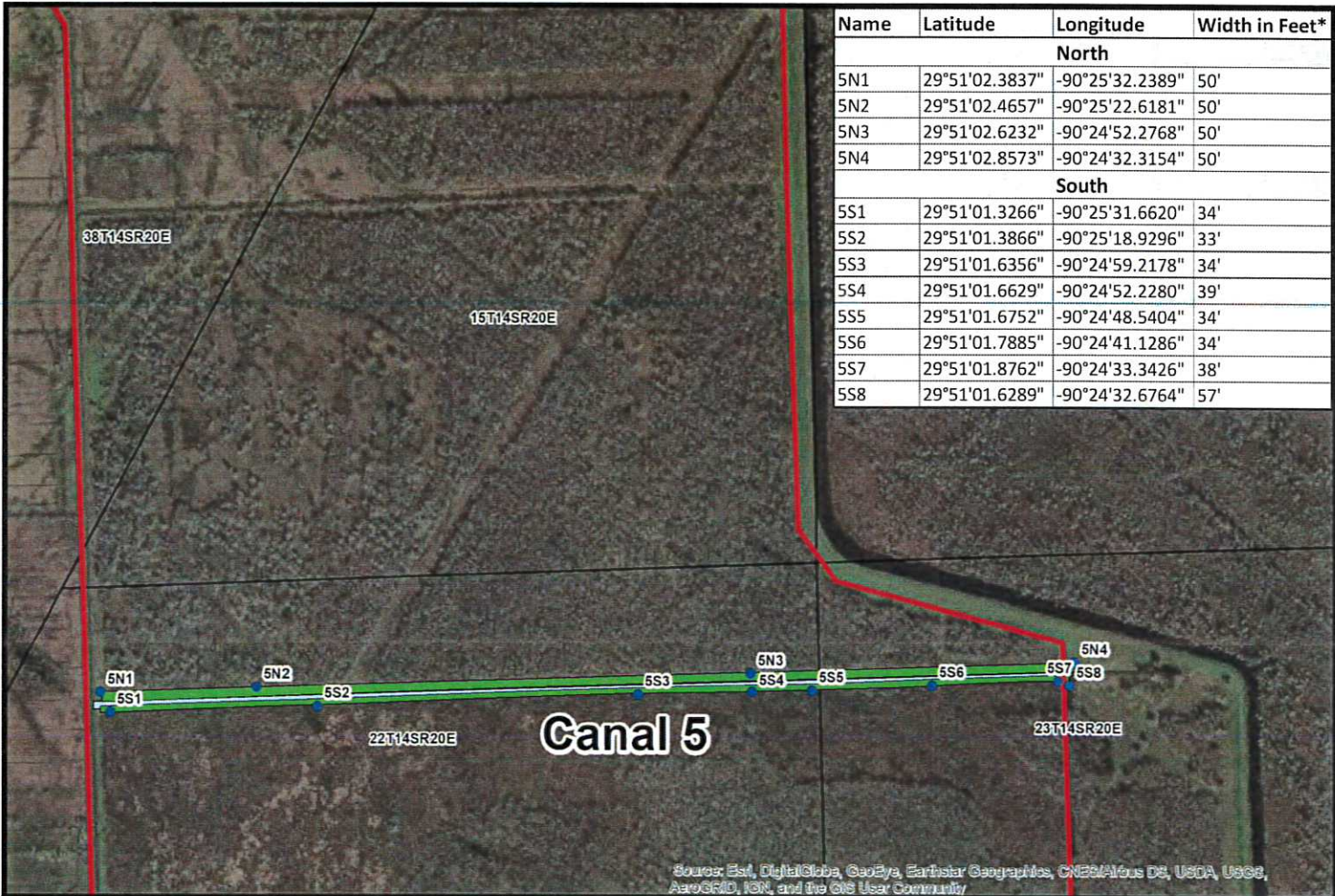
- Reduced Servitude Boundary Coordinates
- Property
- Canal
- Reduced Servitude Area

NAD_1983_UTM_Zone_15N

Chevron U.S.A. Inc.

**Exhibit A-4 Canal 4
 Servitude Amendment and Agreement
 St. Charles Parish, Louisiana**

0 125 250 500 Feet 1 in = 450 ft



Name	Latitude	Longitude	Width in Feet*
North			
5N1	29°51'02.3837"	-90°25'32.2389"	50'
5N2	29°51'02.4657"	-90°25'22.6181"	50'
5N3	29°51'02.6232"	-90°24'52.2768"	50'
5N4	29°51'02.8573"	-90°24'32.3154"	50'
South			
5S1	29°51'01.3266"	-90°25'31.6620"	34'
5S2	29°51'01.3866"	-90°25'18.9296"	33'
5S3	29°51'01.6356"	-90°24'59.2178"	34'
5S4	29°51'01.6629"	-90°24'52.2280"	39'
5S5	29°51'01.6752"	-90°24'48.5404"	34'
5S6	29°51'01.7885"	-90°24'41.1286"	34'
5S7	29°51'01.8762"	-90°24'33.3426"	38'
5S8	29°51'01.6289"	-90°24'32.6764"	57'

Source: Esri, DigitalGlobe, GeoEye, Earthstar Geographics, CNES/Airbus DS, USDA, USGS, AeroGRID, IGN, and the GIS User Community

Notes:
 * Width of Reduced Servitude Area in feet measured from water's edge at -9.5 ft mean sea level
Disclaimer:
 This map does not represent a survey map of any kind. This map has been carefully prepared from official records, maps, engineering data, photographs and/or other information, which is provided as a courtesy only. We make no warranties as to its completeness or accuracy, whether express or implied



Legend

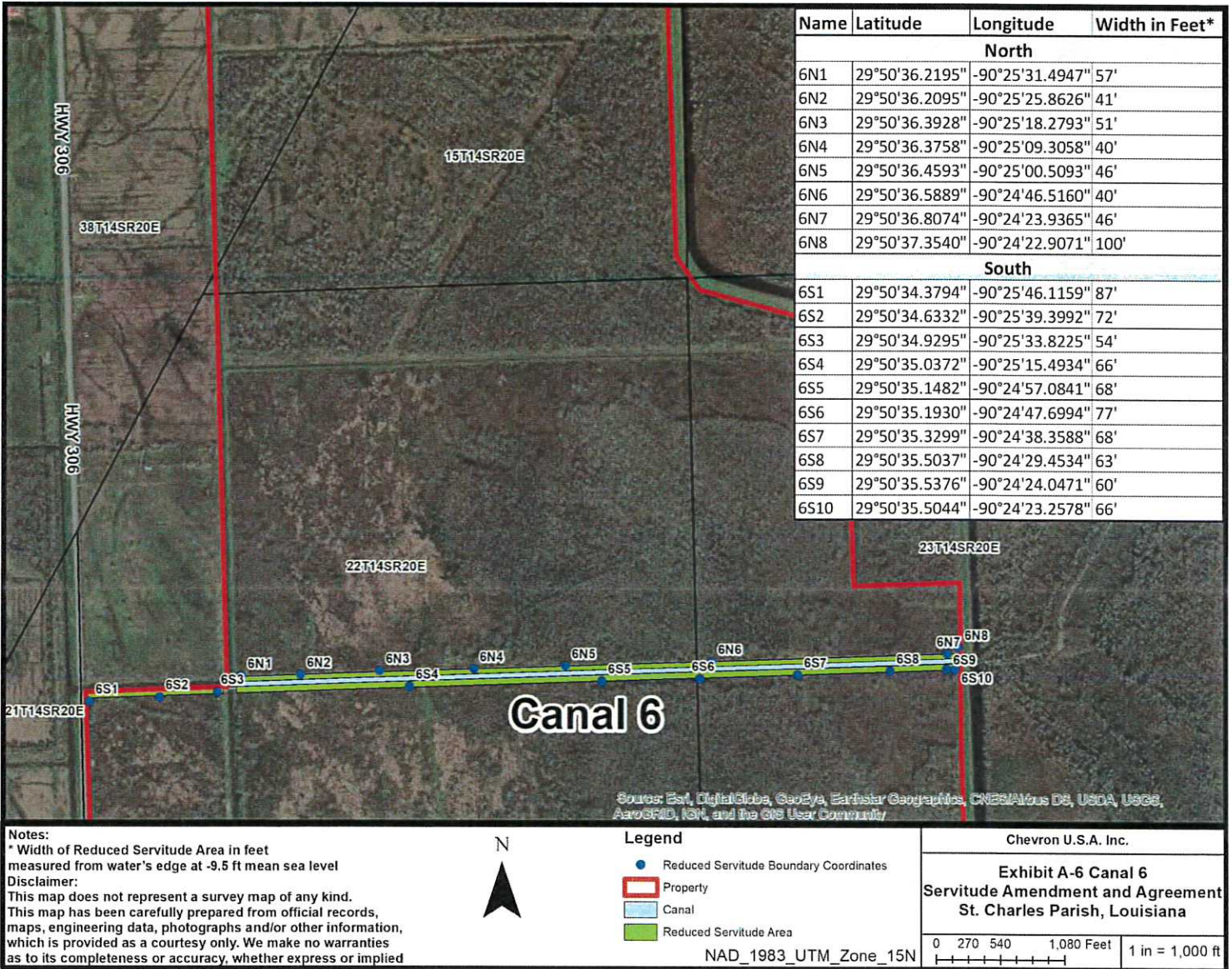
- Reduced Servitude Boundary Coordinates
- Property
- Canal
- Reduced Servitude Area

NAD_1983_UTM_Zone_15N

Chevron U.S.A. Inc.

**Exhibit A-5 Canal 5
 Servitude Amendment and Agreement
 St. Charles Parish, Louisiana**

0 200 400 800 Feet | 1 in = 700 ft



Name	Latitude	Longitude	Width in Feet*
North			
6N1	29°50'36.2195"	-90°25'31.4947"	57'
6N2	29°50'36.2095"	-90°25'25.8626"	41'
6N3	29°50'36.3928"	-90°25'18.2793"	51'
6N4	29°50'36.3758"	-90°25'09.3058"	40'
6N5	29°50'36.4593"	-90°25'00.5093"	46'
6N6	29°50'36.5889"	-90°24'46.5160"	40'
6N7	29°50'36.8074"	-90°24'23.9365"	46'
6N8	29°50'37.3540"	-90°24'22.9071"	100'
South			
6S1	29°50'34.3794"	-90°25'46.1159"	87'
6S2	29°50'34.6332"	-90°25'39.3992"	72'
6S3	29°50'34.9295"	-90°25'33.8225"	54'
6S4	29°50'35.0372"	-90°25'15.4934"	66'
6S5	29°50'35.1482"	-90°24'57.0841"	68'
6S6	29°50'35.1930"	-90°24'47.6994"	77'
6S7	29°50'35.3299"	-90°24'38.3588"	68'
6S8	29°50'35.5037"	-90°24'29.4534"	63'
6S9	29°50'35.5376"	-90°24'24.0471"	60'
6S10	29°50'35.5044"	-90°24'23.2578"	66'

Notes:
 * Width of Reduced Servitude Area in feet measured from water's edge at -9.5 ft mean sea level
Disclaimer:
 This map does not represent a survey map of any kind. This map has been carefully prepared from official records, maps, engineering data, photographs and/or other information, which is provided as a courtesy only. We make no warranties as to its completeness or accuracy, whether express or implied



Source: Esri, DigitalGlobe, GeoEye, Earthstar Geographics, CNES/Airbus DS, USDA, USGS, AeroGRID, IGN, and the GIS User Community

Legend

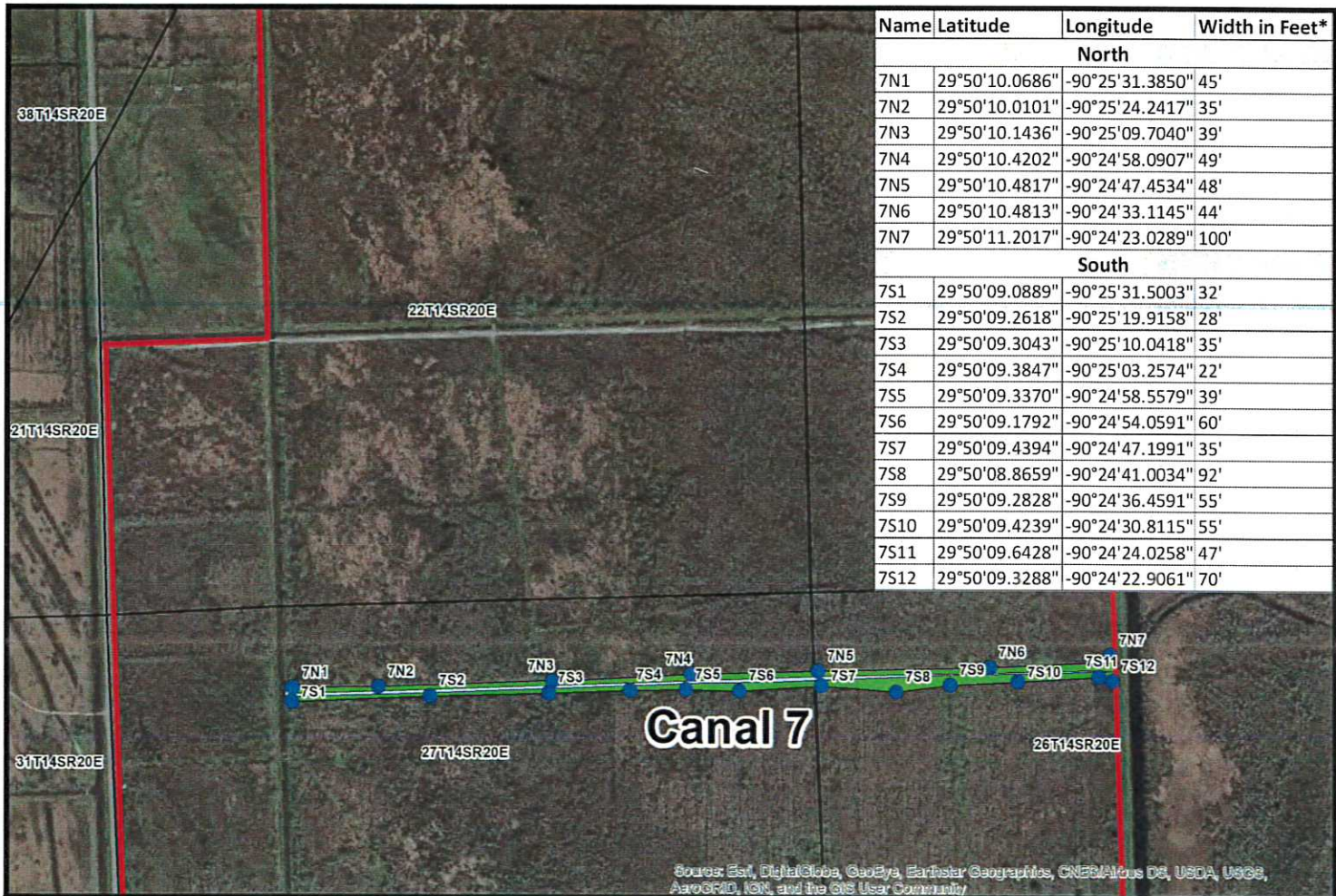
- Reduced Servitude Boundary Coordinates
- Property
- Canal
- Reduced Servitude Area

NAD_1983_UTM_Zone_15N

Chevron U.S.A. Inc.

Exhibit A-6 Canal 6
 Servitude Amendment and Agreement
 St. Charles Parish, Louisiana

0 270 540 1,080 Feet | 1 in = 1,000 ft



Name	Latitude	Longitude	Width in Feet*
North			
7N1	29°50'10.0686"	-90°25'31.3850"	45'
7N2	29°50'10.0101"	-90°25'24.2417"	35'
7N3	29°50'10.1436"	-90°25'09.7040"	39'
7N4	29°50'10.4202"	-90°24'58.0907"	49'
7N5	29°50'10.4817"	-90°24'47.4534"	48'
7N6	29°50'10.4813"	-90°24'33.1145"	44'
7N7	29°50'11.2017"	-90°24'23.0289"	100'
South			
7S1	29°50'09.0889"	-90°25'31.5003"	32'
7S2	29°50'09.2618"	-90°25'19.9158"	28'
7S3	29°50'09.3043"	-90°25'10.0418"	35'
7S4	29°50'09.3847"	-90°25'03.2574"	22'
7S5	29°50'09.3370"	-90°24'58.5579"	39'
7S6	29°50'09.1792"	-90°24'54.0591"	60'
7S7	29°50'09.4394"	-90°24'47.1991"	35'
7S8	29°50'08.8659"	-90°24'41.0034"	92'
7S9	29°50'09.2828"	-90°24'36.4591"	55'
7S10	29°50'09.4239"	-90°24'30.8115"	55'
7S11	29°50'09.6428"	-90°24'24.0258"	47'
7S12	29°50'09.3288"	-90°24'22.9061"	70'

Notes:
 * Width of Reduced Servitude Area in feet measured from water's edge at -9.5 ft mean sea level
Disclaimer:
 This map does not represent a survey map of any kind. This map has been carefully prepared from official records, maps, engineering data, photographs and/or other information, which is provided as a courtesy only. We make no warranties as to its completeness or accuracy, whether express or implied



Legend

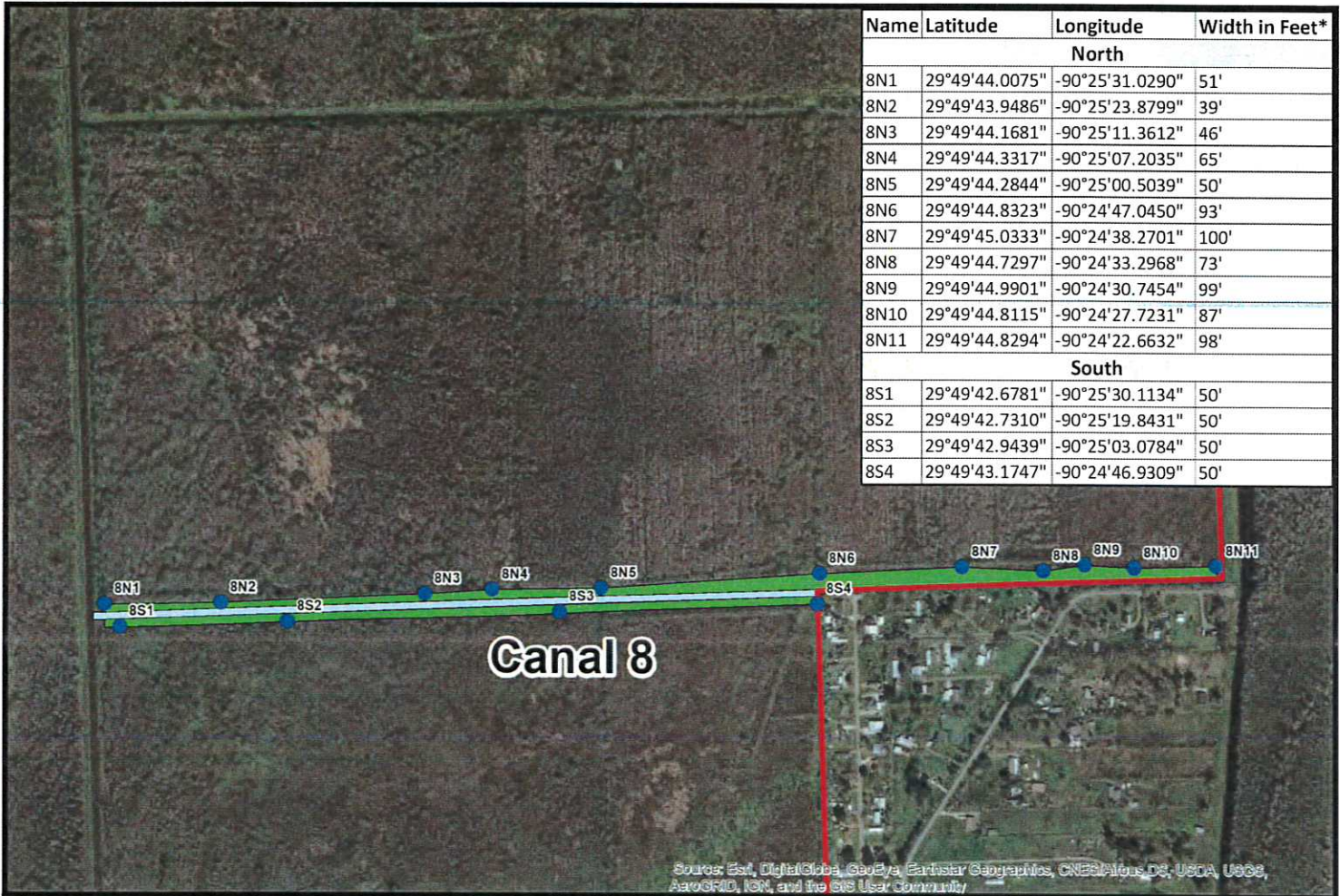
- Reduced Servitude Boundary Coordinates
- Property
- Canal
- Reduced Servitude Area

NAD_1983_UTM_Zone_15N

Chevron U.S.A. Inc.

**Exhibit A-7 Canal 7
 Servitude Amendment and Agreement
 St. Charles Parish, Louisiana**

0 260 520 1,040 Feet | 1 in = 950 ft



Name	Latitude	Longitude	Width in Feet*
North			
8N1	29°49'44.0075"	-90°25'31.0290"	51'
8N2	29°49'43.9486"	-90°25'23.8799"	39'
8N3	29°49'44.1681"	-90°25'11.3612"	46'
8N4	29°49'44.3317"	-90°25'07.2035"	65'
8N5	29°49'44.2844"	-90°25'00.5039"	50'
8N6	29°49'44.8323"	-90°24'47.0450"	93'
8N7	29°49'45.0333"	-90°24'38.2701"	100'
8N8	29°49'44.7297"	-90°24'33.2968"	73'
8N9	29°49'44.9901"	-90°24'30.7454"	99'
8N10	29°49'44.8115"	-90°24'27.7231"	87'
8N11	29°49'44.8294"	-90°24'22.6632"	98'
South			
8S1	29°49'42.6781"	-90°25'30.1134"	50'
8S2	29°49'42.7310"	-90°25'19.8431"	50'
8S3	29°49'42.9439"	-90°25'03.0784"	50'
8S4	29°49'43.1747"	-90°24'46.9309"	50'

Source: Esri, DigitalGlobe, GeoEye, Earthstar Geographics, CNES/Airbus DS, USDA, USGS, AeroGRID, IGN, and the GIS User Community

Notes:
 * Width of Reduced Servitude Area in feet measured from water's edge at -9.5 ft mean sea level
Disclaimer:
 This map does not represent a survey map of any kind. This map has been carefully prepared from official records, maps, engineering data, photographs and/or other information, which is provided as a courtesy only. We make no warranties as to its completeness or accuracy, whether express or implied



Legend

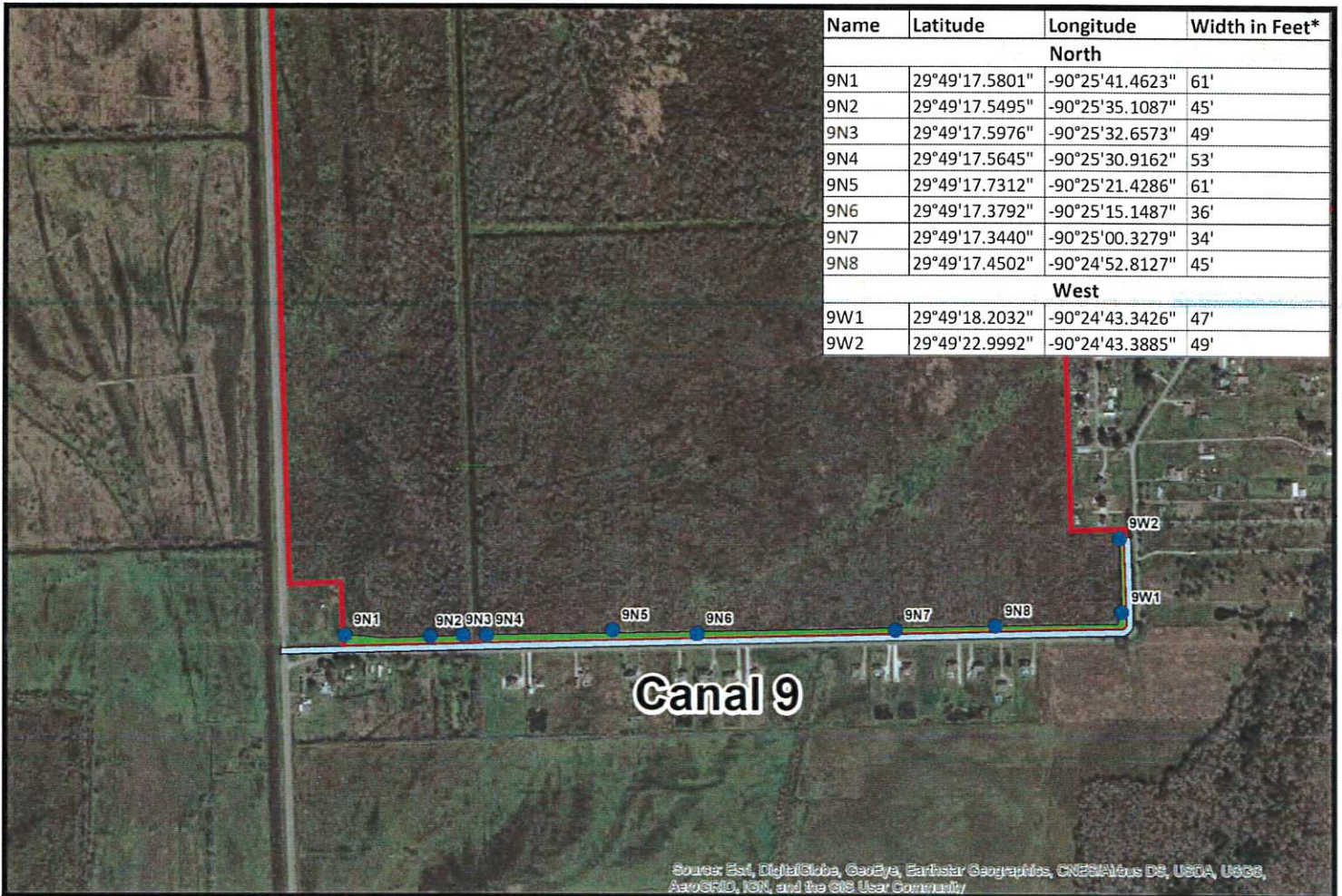
- Reduced Servitude Boundary Coordinates
- Property
- Canal
- Reduced Servitude Area

NAD_1983_UTM_Zone_15N

Chevron U.S.A. Inc.

Exhibit A-8 Canal 8
 Servitude Amendment and Agreement
 St. Charles Parish, Louisiana

0 200 400 800 Feet 1 in = 700 ft



Name	Latitude	Longitude	Width in Feet*
North			
9N1	29°49'17.5801"	-90°25'41.4623"	61'
9N2	29°49'17.5495"	-90°25'35.1087"	45'
9N3	29°49'17.5976"	-90°25'32.6573"	49'
9N4	29°49'17.5645"	-90°25'30.9162"	53'
9N5	29°49'17.7312"	-90°25'21.4286"	61'
9N6	29°49'17.3792"	-90°25'15.1487"	36'
9N7	29°49'17.3440"	-90°25'00.3279"	34'
9N8	29°49'17.4502"	-90°24'52.8127"	45'
West			
9W1	29°49'18.2032"	-90°24'43.3426"	47'
9W2	29°49'22.9992"	-90°24'43.3885"	49'

Sources: Esri, DigitalGlobe, GeoEye, Earthstar Geographics, CNES/Airbus DS, USDA, USGS, AeroGRID, IGN, and the GIS User Community

Notes:
 * Width of Reduced Servitude Area in feet measured from water's edge at -9.5 ft mean sea level
Disclaimer:
 This map does not represent a survey map of any kind. This map has been carefully prepared from official records, maps, engineering data, photographs and/or other information, which is provided as a courtesy only. We make no warranties as to its completeness or accuracy, whether express or implied



Legend

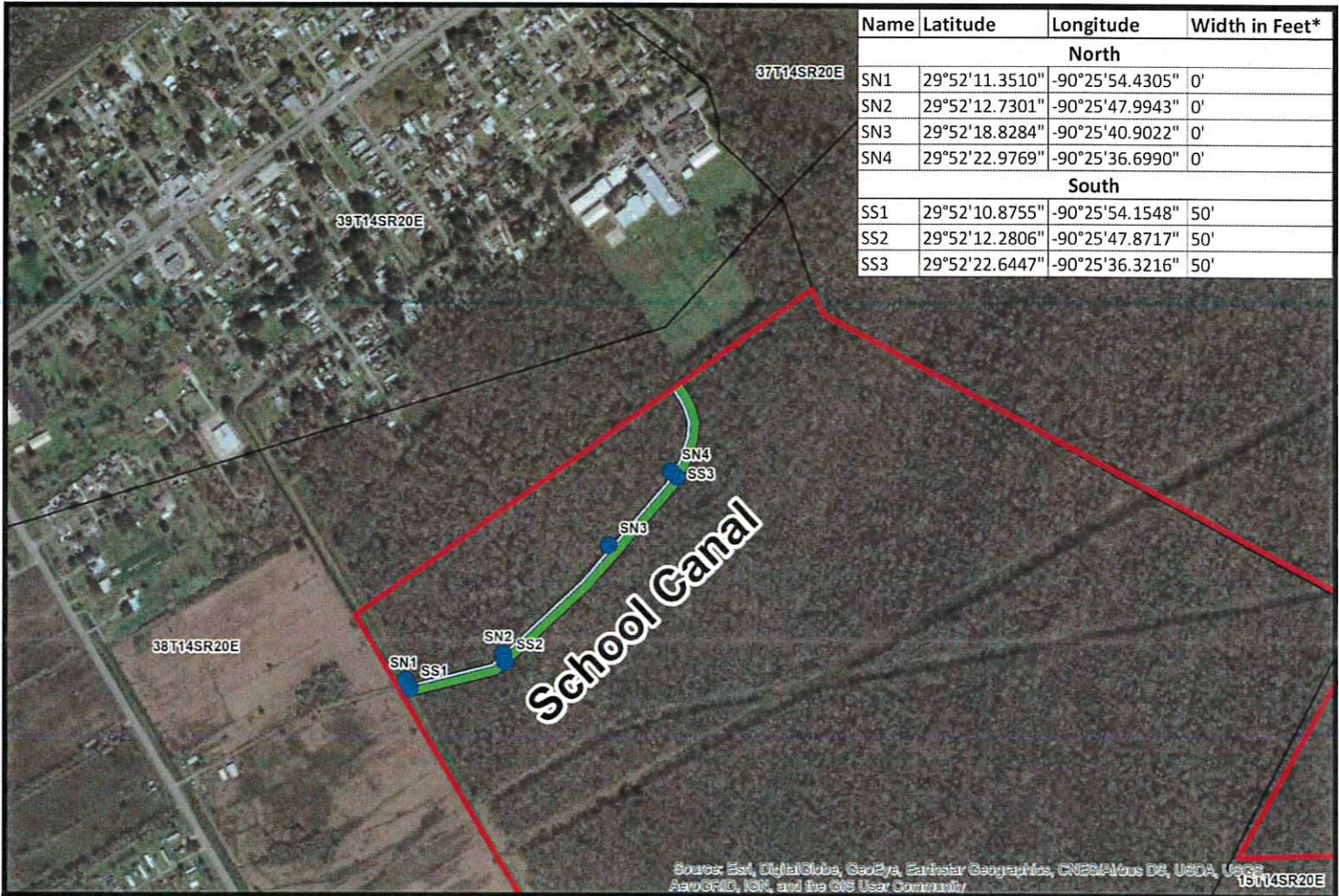
- Reduced Servitude Boundary Coordinates
- Property
- Canal
- Reduced Servitude Area

NAD_1983_UTM_Zone_15N

Chevron U.S.A. Inc.

**Exhibit A-9 Canal 9
 Servitude Amendment and Agreement
 St. Charles Parish, Louisiana**

0 240 480 960 Feet 1 in = 850 ft



Name	Latitude	Longitude	Width in Feet*
North			
SN1	29°52'11.3510"	-90°25'54.4305"	0'
SN2	29°52'12.7301"	-90°25'47.9943"	0'
SN3	29°52'18.8284"	-90°25'40.9022"	0'
SN4	29°52'22.9769"	-90°25'36.6990"	0'
South			
SS1	29°52'10.8755"	-90°25'54.1548"	50'
SS2	29°52'12.2806"	-90°25'47.8717"	50'
SS3	29°52'22.6447"	-90°25'36.3216"	50'

Notes:
 * Width of Reduced Servitude Area in feet measured from water's edge at -9.5 ft mean sea level
Disclaimer:
 This map does not represent a survey map of any kind. This map has been carefully prepared from official records, maps, engineering data, photographs and/or other information, which is provided as a courtesy only. We make no warranties as to its completeness or accuracy, whether express or implied



Legend

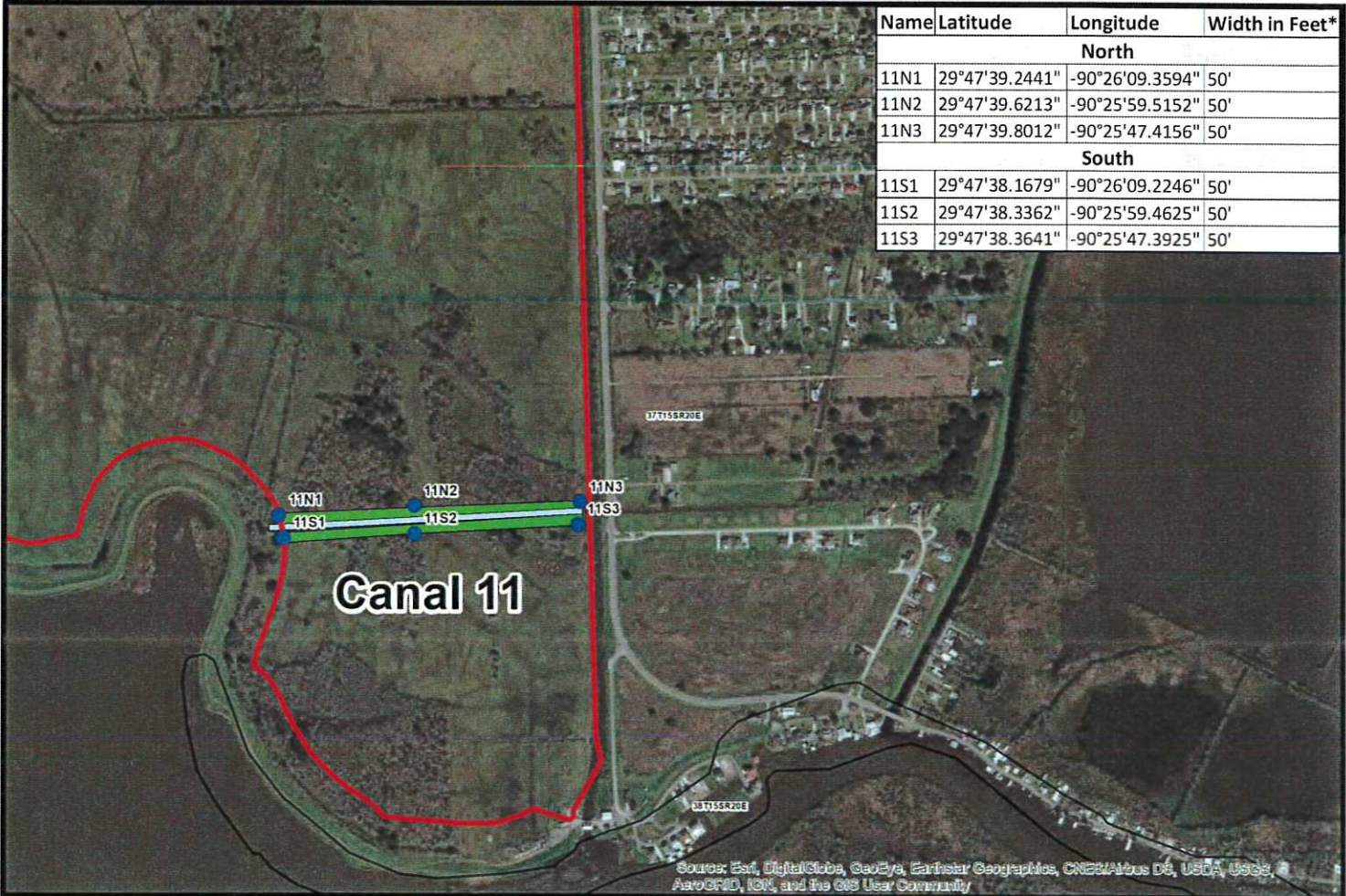
- Reduced Servitude Boundary Coordinates
- Property
- Canal
- Reduced Servitude Area

NAD_1983_UTM_Zone_15N

Chevron U.S.A. Inc.

**Exhibit A-10 School Canal
 Servitude Amendment and Agreement
 St. Charles Parish, Louisiana**

0 212.5 425 850 Feet 1 in = 750 ft



Name	Latitude	Longitude	Width in Feet*
North			
11N1	29°47'39.2441"	-90°26'09.3594"	50'
11N2	29°47'39.6213"	-90°25'59.5152"	50'
11N3	29°47'39.8012"	-90°25'47.4156"	50'
South			
11S1	29°47'38.1679"	-90°26'09.2246"	50'
11S2	29°47'38.3362"	-90°25'59.4625"	50'
11S3	29°47'38.3641"	-90°25'47.3925"	50'

Source: Esri, DigitalGlobe, GeoEye, Earthstar Geographics, CNES/Airbus DS, USDA, USGS, AeroGRID, IGN, and the GIS User Community

Notes:
 * Width of Reduced Servitude Area in feet measured from water's edge at -9.5 ft mean sea level
Disclaimer:
 This map does not represent a survey map of any kind. This map has been carefully prepared from official records, maps, engineering data, photographs and/or other information, which is provided as a courtesy only. We make no warranties as to its completeness or accuracy, whether express or implied



Legend

- Reduced Servitude Boundary Coordinates
- Property
- Canal
- Reduced Servitude Area

NAD_1983_UTM_Zone_15N

Chevron U.S.A. Inc.

**Exhibit A-11 Canal 11
 Servitude Amendment and Agreement
 St. Charles Parish, Louisiana**

0 240 480 960 Feet 1 in = 850 ft



Name	Latitude	Longitude	Width in Feet*
North			
13N1	29°48'30.9989"	-90°27'54.7712"	64'
13N2	29°48'31.1108"	-90°27'40.7949"	63'
13N3	29°48'31.1542"	-90°27'22.0117"	48'
13N4	29°48'31.3801"	-90°27'11.7044"	56'
13N5	29°48'31.4209"	-90°26'57.0254"	49'
13N6	29°48'31.7188"	-90°26'43.4743"	66'
13N7	29°48'32.0443"	-90°26'41.7175"	96'
13N8	29°48'31.5025"	-90°26'40.8874"	41'
13N9	29°48'31.7745"	-90°26'11.4589"	34'
13N10	29°48'31.9916"	-90°25'54.6929"	43'
13N11	29°48'32.0490"	-90°25'47.5860"	43'
South			
13S1	29°48'29.5805"	-90°27'56.3932"	50'
13S2	29°48'29.7245"	-90°27'51.6643"	50'
13S3	29°48'29.7672"	-90°27'37.5347"	50'
13S4	29°48'29.8532"	-90°27'20.4632"	50'
13S5	29°48'29.9414"	-90°27'04.2256"	50'
13S6	29°48'30.0491"	-90°26'52.8623"	50'
13S7	29°48'30.3050"	-90°26'41.6763"	50'
13S8	29°48'30.2864"	-90°26'37.4941"	50'
13S9	29°48'30.4226"	-90°26'30.4347"	50'
13S10	29°48'30.5461"	-90°26'20.8737"	50'
13S11	29°48'30.5247"	-90°26'11.1809"	50'
13S12	29°48'30.7614"	-90°25'56.9161"	50'
13S13	29°48'30.8304"	-90°25'47.6244"	50'

Source: Esri, DigitalGlobe, GeoEye, Earthstar Geographics, CNES/Airbus DS, USDA, USGS, AeroGRID, IGN, and the GIS User Community

Notes:
 * Width of Reduced Servitude Area in feet measured from water's edge at -9.5 ft mean sea level
Disclaimer:
 This map does not represent a survey map of any kind. This map has been carefully prepared from official records, maps, engineering data, photographs and/or other information, which is provided as a courtesy only. We make no warranties as to its completeness or accuracy, whether express or implied



Legend

- Reduced Servitude Boundary Coordinates
- Property
- Canal
- Reduced Servitude Area

NAD_1983_UTM_Zone_15N

Chevron U.S.A. Inc.

**Exhibit A-13 Canal 13
 Servitude Amendment and Agreement
 St. Charles Parish, Louisiana**

0 625 1,250 2,500 Feet | 1 in = 2,300 ft



Name	Latitude	Longitude	Width in Feet*
North			
14N1	29°48'56.9816"	-90°28'01.4431"	50'
14N2	29°48'57.1173"	-90°27'47.8501"	50'
14N3	29°48'57.1874"	-90°27'46.2537"	50'
14N4	29°48'57.2951"	-90°27'30.5235"	50'
14N5	29°48'57.4327"	-90°27'14.2495"	50'
14N6	29°48'57.4473"	-90°27'02.8236"	50'
14N7	29°48'57.6357"	-90°26'51.4310"	50'
14N8	29°48'57.7853"	-90°26'38.9552"	50'
14N9	29°48'57.8902"	-90°26'24.8963"	50'
14N10	29°48'58.0104"	-90°26'16.7774"	50'
14N11	29°48'57.9826"	-90°26'00.8401"	50'
14N12	29°48'58.1152"	-90°25'53.8113"	50'
14N13	29°48'58.2526"	-90°25'47.8271"	50'
South			
14S1	29°48'55.7692"	-90°28'20.2438"	46'
14S2	29°48'55.7951"	-90°28'12.4821"	47'
14S3	29°48'55.9782"	-90°28'03.7962"	41'
14S4	29°48'55.8740"	-90°27'52.0509"	55'
14S5	29°48'55.7527"	-90°27'47.5105"	72'
14S6	29°48'55.8694"	-90°27'45.9334"	60'
14S7	29°48'56.2696"	-90°27'33.4611"	31'
14S8	29°48'56.1888"	-90°27'14.7139"	49'
14S9	29°48'56.6272"	-90°26'42.4577"	33'
14S10	29°48'56.1280"	-90°26'39.1295"	84'
14S11	29°48'56.6333"	-90°26'38.5667"	33'
14S12	29°48'56.8048"	-90°26'21.1051"	33'
14S13	29°48'56.7322"	-90°26'12.2301"	48'
14S14	29°48'56.8804"	-90°26'02.3466"	44'
14S15	29°48'56.9977"	-90°25'54.3698"	33'
14S16	29°48'57.0558"	-90°25'47.8442"	39'

Source: Esri, DigitalGlobe, GeoEye, Earthstar Geographics, CNES/Airbus DS, USDA, USGS, AeroGRID, IGN, and the GIS User Community

Notes:
 * Width of Reduced Servitude Area in feet measured from water's edge at -9.5 ft mean sea level
Disclaimer:
 This map does not represent a survey map of any kind. This map has been carefully prepared from official records, maps, engineering data, photographs and/or other information, which is provided as a courtesy only. We make no warranties as to its completeness or accuracy, whether express or implied



Legend

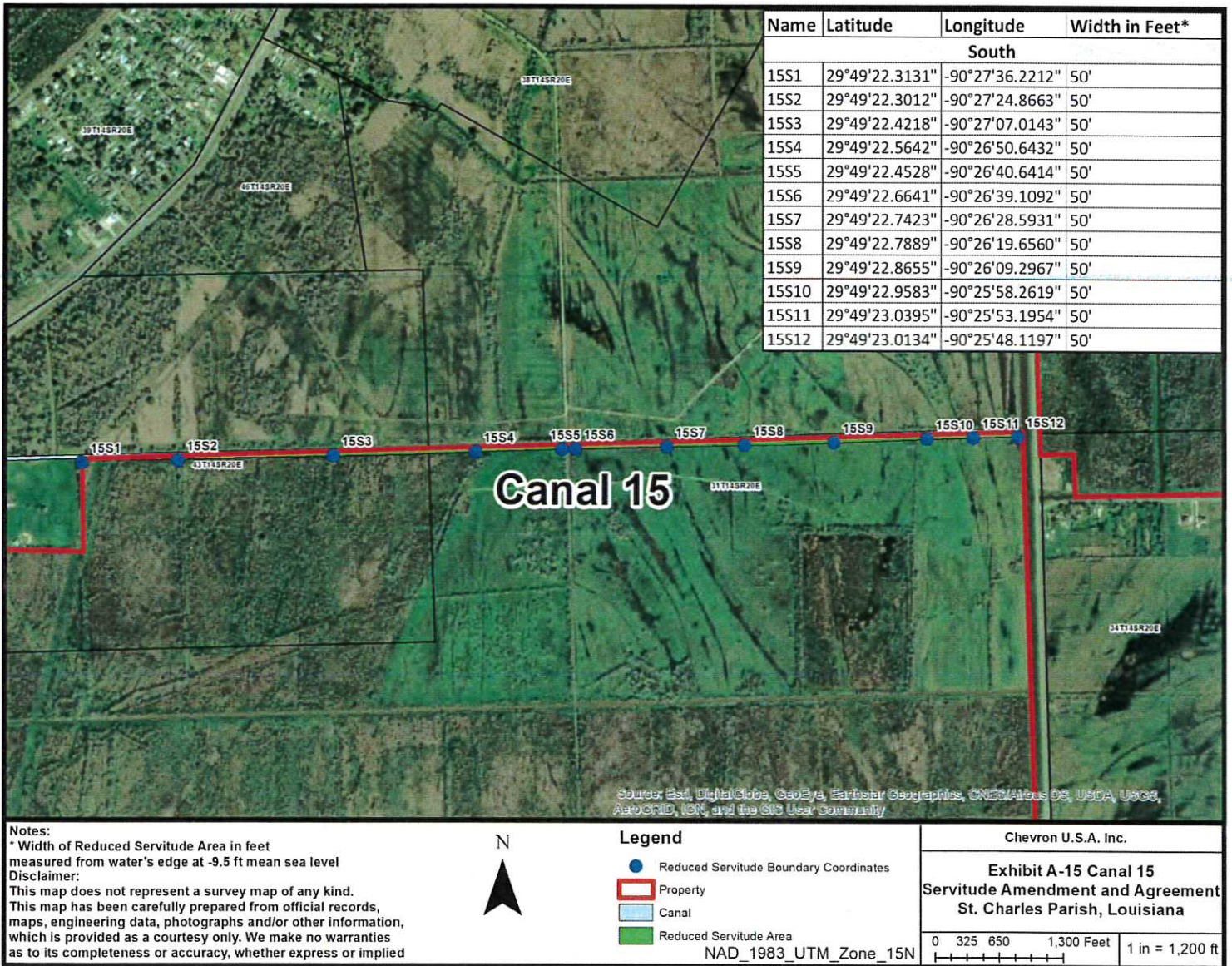
- Reduced Servitude Boundary Coordinates
- Property
- Canal
- Reduced Servitude Area

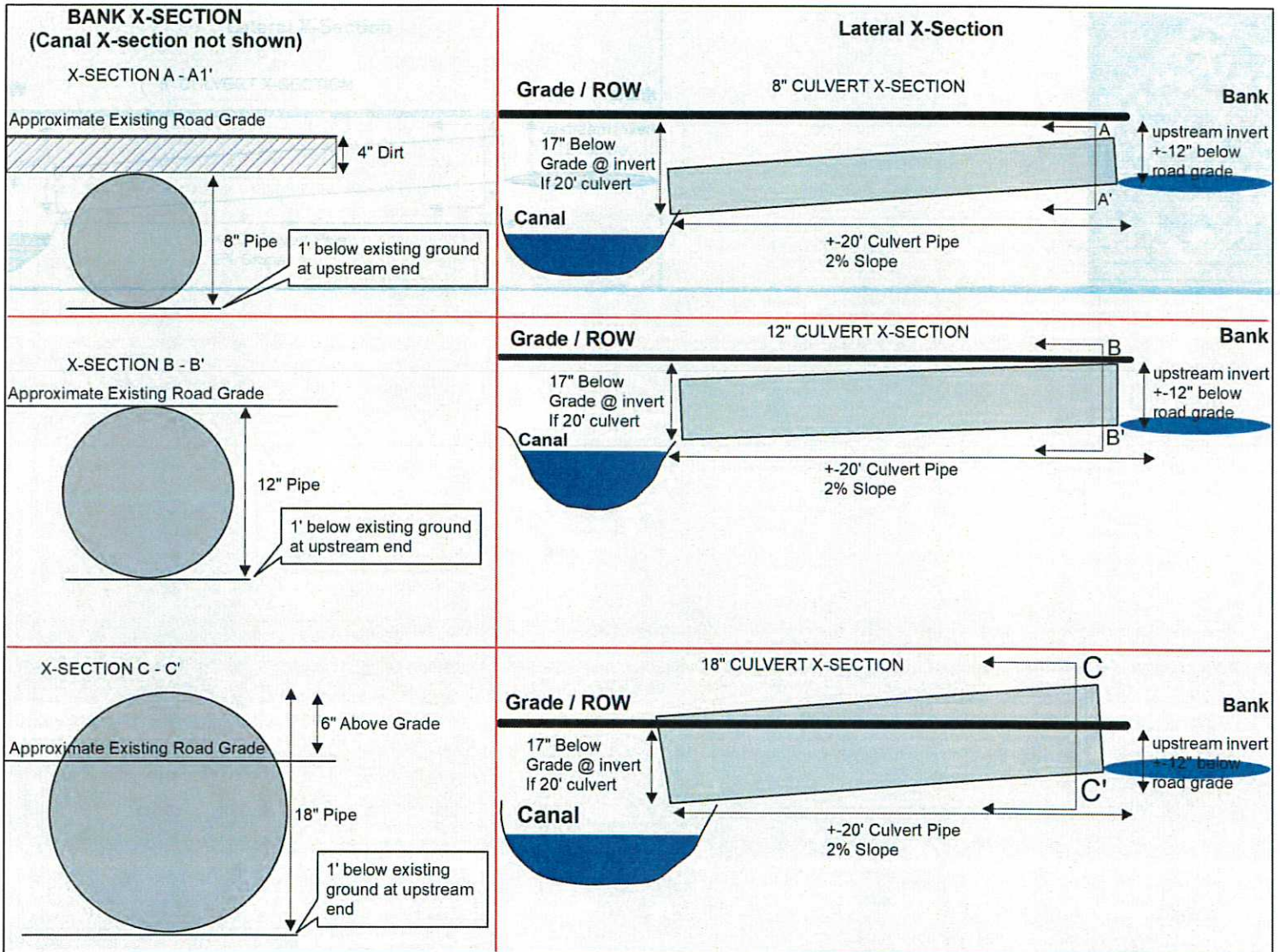
NAD_1983_UTM_Zone_15N

Chevron U.S.A. Inc.

**Exhibit A-14 Canal 14
 Servitude Amendment and Agreement
 St. Charles Parish, Louisiana**

0 650 1,300 2,600 Feet 1 in = 2,400 ft





Notes:
 - Maintain a minimum of 1' cover dirt over all culverts
 - Fill transition to allow passage of vehicle without high centering

Chevron U.S.A. Inc.
 One Inch = NTS

Exhibit B
 Servitude Amendment and Agreement
 St. Charles Parish, Louisiana