



# WELCOME



# Commissioners



**D. Paul  
Robichaux**  
*PRESIDENT*



**Joseph M.  
Scontrino III**  
*EXECUTIVE VP*



**P. Joey  
Murray III**  
*TREASURER*



**Stanley  
Bazile**  
*SECRETARY*

**Robert "Poncho"  
Roussel**  
*VICE PRESIDENT*



**Kelly  
Buckwalter**  
*VICE PRESIDENT*



**Patrick C.  
Sellars**  
*VICE PRESIDENT*



**Judy  
Songy**  
*VICE PRESIDENT*

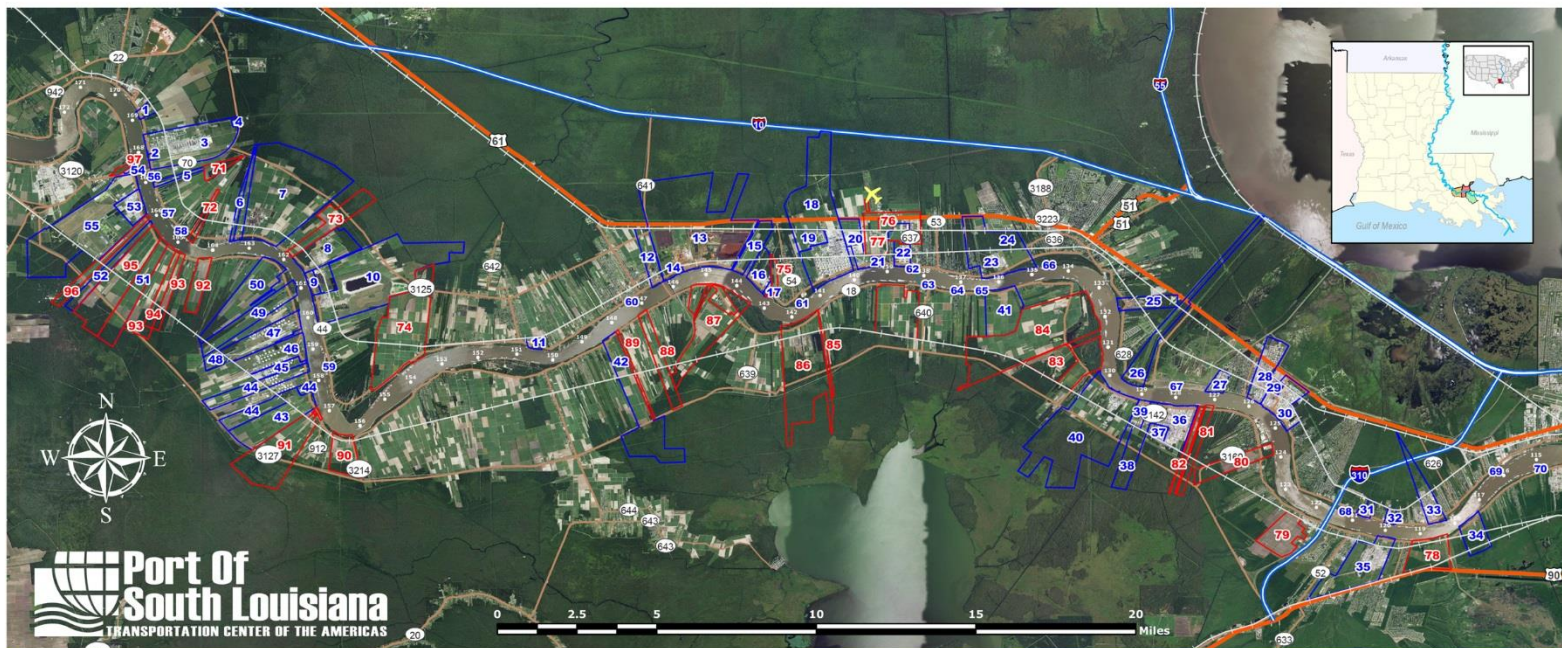


**Whitney  
Hickerson**  
*VICE PRESIDENT*

# Jurisdiction

## Pipelines

**33 Crude**  
**159 NG**



### EXISTING INDUSTRY

1	Dupont / Dow	19	Pinnacle Polymers	36	Dow - St. Charles	54	Valero Asphalt
2	LaFarge Corporation	20	Cargill Terre Haute Elevator / Bulk Liquid	37	Galata Chemicals	55	Mosaic - Faustina
3	Shell - Convent	21	ADM - Reserve	38	Occidental Chemical	56	Associated Terminals Sunshine Midstream Buoy
4	Air Products & Chemicals	22	Globalplex Intermodal Terminal	39	Mosaic	57	Sunshine Anchorage
5	Yara North America	23	Denka Performance Elastomer LLC	40	Entergy / Waterford 1, 2, 3	58	Associated Terminals Midstream Buoy
6	Zen-Noh Grain	24	El Dupont	41	Eurochem	59	Ryan Walsh Stevedoring Midstream Buoy
7	Nucor Steel Louisiana, LLC	25	Arcelor Mittal	42	Petroplex International, LLC	60	Grandview Anchorage
8	Occidental Chemical	26	Entergy / Little Gypsy	43	Yuhuang Chemical Company	61	St. John Fleet Midstream Buoy
9	Convent Marine	27	Momentive	44	Plains All American	62	Reserve Midstream Buoy
10	Mosaic - Uncle Sam	28	Shell Chemical	45	Locap, Inc.	63	Reserve Anchorage
11	ADM - Paulina	29	Shell - Norco	46	Shell Pipeline	64	Capital Marine Tigerville Midstream Buoy
12	Louisiana Sugar Refinery	30	Valero - St. Charles	47	NuStar	65	Gold Mine Fleet Midstream Buoy
13	Noranda Aluminum	31	ADM - Destrehan	48	Syngas Energy	66	CGB Midstream Buoy
14	Rain Oil	32	Bunge North American	49	Ergon / Sun Fuel Midstream	67	Bonne Carré Anchorage
15	Pin Oak Terminals	33	International Matex Tank Terminals (IMTT)	50	South Louisiana Methanol	68	ADM Midstream Buoy
16	Nalco/Ecolab	34	ADM - Ama	51	Marubeni Corporation (Gavilon)	69	Ama Anchorage
17	Evonik	35	Monsanto	52	INCA Refining	70	Kenner Bend Anchorage
18	Marathon Petroleum Corporation			53	Americas Styrenics		

### HEAVY INDUSTRIAL SITES

71	Ancient Domain - 225 acres	85	Whiterose - 300 acres; 854' rf
72	Balot & Whitehall - 240 acres; 980' rf	86	Willow Bend - 2,200 acres; 6,000' rf
73	Shady Grove - 231 acres; 1,690' rf	87	Robert Brothers Farm - 1,582 acres; 8,448' rf
74	Welham - 2,300 acres; 2,000' rf	88	Goodwill Plantation - 500 acres; 1,500' rf
75	Hope Plantation - 283 acres; 1,500' rf	89	Succeed - 100 acres; 384' rf
76	Gudry Property - 84 acres	90	Rich Bend Plantation - 500 acres; 1,300' rf
77	Airline Industrial Park - 1,100 acres	91	Zeringue / St. Emma - 1,464 acres; 2,254' rf
78	Davis Levert - 100 acres; 2,640' rf	92	Savannah - 381 acres; 1,954' rf
79	Esperanza Business Park - 650 acres	93	Minnie & St. Louis - 900 acres; 2,482' rf
80	Home Place - 375 acres	94	St. Alice - 321 acres; 670' rf
81	Pelican-Occidental - 489 acres; 1,373' rf	95	Winchester / Acadia - 1,490 acres; 2,403' rf
82	SolaPort - 99 acres; 263' rf	96	Elina - 406 acres; 520' rf
83	St. Charles Riverpark - 1,170 +/- acres; 5,800' rf	97	Dunhill - 51 acres; 1,100' rf
84	Glendale Hymelia - 2,500 acres; 5,808' rf		

# Petrochemical, Chemical & Fertilizer Facilities

Air Products

Galata Chemicals

American Styrenics

Occidental

Chemical

Rain CII

Denka

Monsanto

Air Liquide

Dow St. Charles

Nalco

Evonik

Mosaic

Pinnacle Polymers

Momentive

# Oil and Grain Facilities

## OIL REFINERIES

Shell - Convent

Marathon Petroleum

Shell - Norco

Valero – St. Charles

## GRAIN ELEVATORS

Zen-Noh Grain

Cargill

Bunge North American

ADM – Paulina

ADM – Reserve

ADM – Destrehan

ADM - Ama



## TENANTS

Evonik

NATCO

Food Service

Barton Mines

Baumer Foods

Associated

Terminals

LaFargeHolcim

ADM

CRC

Pinnacle Polymers



**Port Of  
South Louisiana**  
TRANSPORTATION CENTER OF THE AMERICAS



## Globalplex Intermodal Terminal

- 335-Acres: bulk cargo dock; general cargo dock with adjacent finger pier; over 716,000 sq.ft. covered storage; 177,000 sq.ft. open storage; 130-acre certified available site
- *Stevedoring Firm: Associated Terminals*



Port of South Louisiana is ranked as the #1

***LARGEST TONNAGE PORT IN THE WESTERN HEMISPHERE!***

294 million short tons | 4,578 vessels | 59,780 barges (2016)





**Port Of  
South Louisiana**  
TRANSPORTATION CENTER BY THE AMERICAS



Port of South Louisiana is ranked as the #1

***GRAIN EXPORTER IN THE UNITED STATES!***

Seven grain elevators - ship to over 90 countries





Port of South Louisiana is ranked as the #1

**FOREIGN TRADE ZONE (#124) IN THE U.S. FOR MERCHANDISE RECEIVED!**

16 zones | \$82 billion received & 10,500 employed (2015)

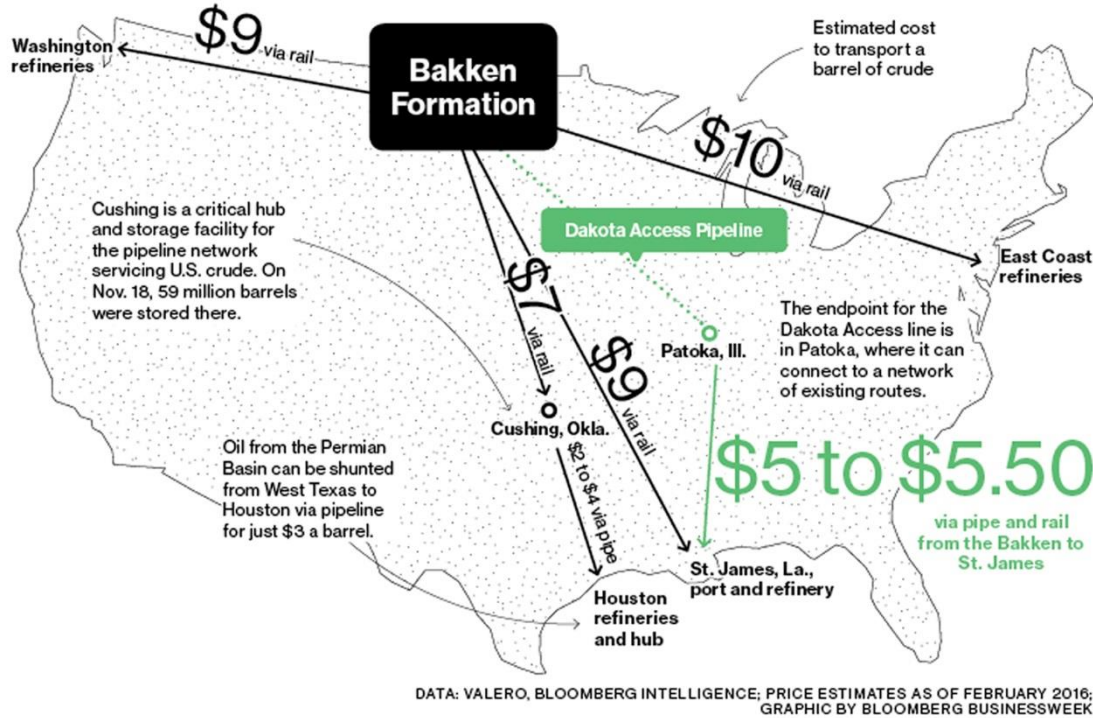


Port of South Louisiana Is Ranked As One of the Top...

*...ENERGY TRANSFER PORTS* IN THE *UNITED STATES!*

- 4 major oil refineries | 7 crude oil storage terminals
- Pipelines: 33 crude; 159 natural gas





*Shipping crude from the Bakken is relatively expensive, according to estimates from Valero and Bloomberg Intelligence. The Dakota Access Pipeline would make it more economically viable.*

# Energy Transfer Pipelines

## DAKOTA ACCESS TO BAYOU BRIDGE







## Energy Transfer Pipelines

**BAYOU BRIDGE**



# Largest Tonnage Port in the Western Hemisphere



**OVER 294 MILLION SHORT TONS TRANSPORTED VIA, ON OVER**  
*4,500 vessels and 59,700 barges*

**LARGEST GRAIN PORT IN THE U.S. (50% OF ALL THE NATION'S EXPORTS)**  
*seven grain elevators*



**VALUE:**  
**OVER \$57 BILLION IN EXPORTS**  
**OVER \$26 BILLION IN IMPORTS**

**ONE OF THE TOP ENERGY TRANSFER PORTS IN THE U.S.**  
*four major oil refineries & seven crude oil storage terminals*



**OVER 40 LIQUID AND DRY BULK TERMINALS**

**FOREIGN TRADE ZONE #124**  
**RANKED FIRST IN THE U.S.**  
*\*Received 82 billion in merchandise (2015)*  
*\*16 zones*



# Port Tonnage

EXPORTS

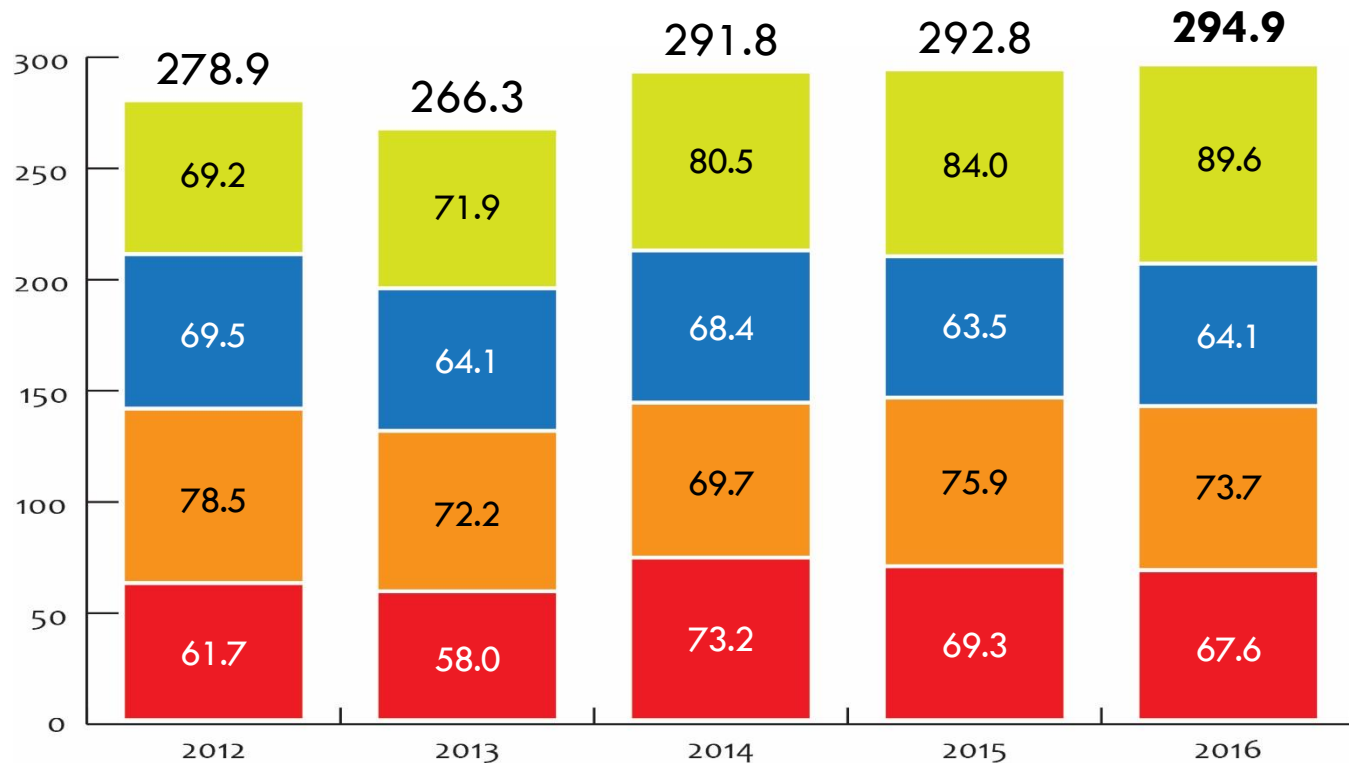
IMPORTS

DOMESTIC SHIPPED

DOMESTIC RECEIVED

TOTAL  
THROUGHPUT

*in million  
short tons*





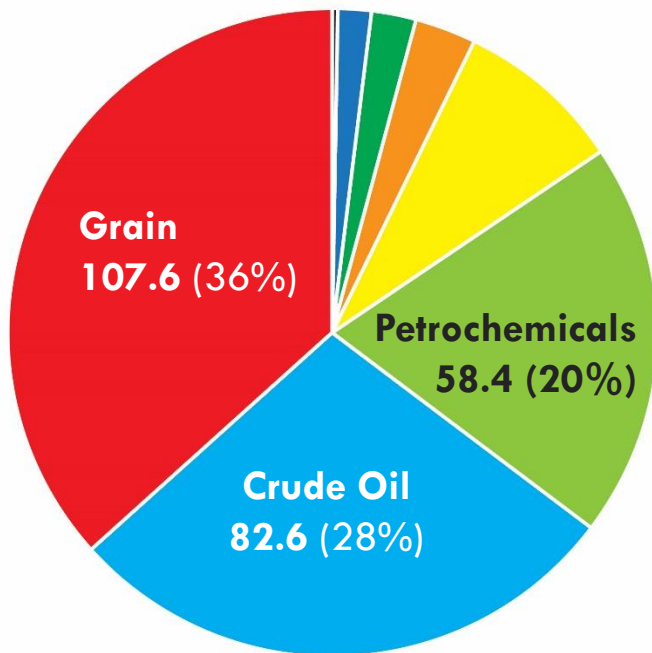
# Commodities/Port Tonnage

2016 Tonnage:

**294.9** million  
short tons

# Vessels:  
**4,578**

# Barges:  
**59,780**



## Grain

Soybean	47.6
Maize	44.3
Animal Feed	11.6
Wheat	2.3
Sorghum + Rice	1.9

Chemicals/Fertilizers	24.8	(8%)
Ores/Phosphate Rock	8.6	(3%)
Coal/Lignite/Coke	7.1	(2%)
Steel Products	4.5	(2%)
Other	1.3	(<1%)
Edible Oils	0.8	
Miscellaneous	0.3	
Concrete/Stone	0.1	
Sugar/Molasses	0.05	

# Economic Impact of the Port of South Louisiana

	REGIONAL	LOUISIANA
New Business Sales	\$ 14.4 billion	\$ 19.9 billion
Earnings	\$ 1.8 billion	\$ 4.4 billion
Employment	30,180 jobs <i>(6 in 10 jobs in the River Region)</i>	83,409 <i>(1 in 25 jobs in Louisiana)</i>
# Jobs at Globalplex = 315		
Tax Revenue	\$ 72.5 million	\$ 310.5 million
	Loren C. Scott & Associates, Inc., 2015	

Access to over

**26 Million  
people**

in 31 U.S. States

Alabama	Nebraska
Arkansas	New Mexico
Colorado	New York
Georgia	N. Carolina
Idaho	N. Dakota
Illinois	Ohio
Indiana	Oklahoma
Iowa	Pennsylvania
Kansas	S. Dakota
Kentucky	Tennessee
Louisiana	Texas
Michigan	Virginia
Minnesota	W. Virginia
Mississippi	Wisconsin
Missouri	Wyoming
Montana	



**INLAND RIVER SYSTEM**



# Port Benefits



## **INDUSTRIAL REVENUE BOND FINANCING**

Authority to issue taxable and tax-exempt bonds to assist industrial facilities locating within our Port district

**FOREIGN TRADE ZONE (FTZ) #124**  
Operator of the most active trade zone in America



## **PROFESSIONAL LOCATION ASSISTANCE**

Available to companies planning to locate to the river region. Includes the use of in-house GIS

## **MARITIME SECURITY AND FIRE PROTECTION**

Round-the-clock dock security and emergency response division, in cooperation with local sheriff's departments, with an array of firefighting and safety equipment





2,000 sq.ft. hardened concrete and steel building with impact resistant glass, built to withstand 150 mile-per-hour winds



Equipped with the latest in communications and surveillance equipment, linked to MSOCs at four other deep water ports on the lower Mississippi River



Linked to federal, state, and local emergency response agencies



## Marine Security Operations Center (MSOC)

Command and control center to manage emergencies within the Port's jurisdiction

# Doing Business in Louisiana



**#2 IN THE NATION FOR INCENTIVE PROGRAMS AND RENEWED CONSIDERATION**



**#5 IN THE NATION FOR OVERALL BUSINESS ENVIRONMENT AND FAVORABLE REGULATORY ENVIRONMENT**



**#3 MOST COOPERATIVE STATE GOVERNMENT; #7 IN THE NATION FOR SPEED OF PERMITTING**

2015

INTERNATIONAL ECONOMIC  
DEVELOPMENT COUNCIL  
**EXCELLENCE**  
IN ECONOMIC DEVELOPMENT  
**AWARDS**

**BRONZE**



# Economic Development

	<i>Parish</i>	<i>Capital Investment</i>	<i># Direct Jobs</i>	<i>Avg Salary</i>
<b>Nucor Steel – U.S.</b>	St. James	\$ 3.4 billion	1,250	\$ 75K
<b>Yuhuang Chemical – China (methanol)</b>	St. James	\$ 1.85 billion	400	\$ 85K
<b>EuroChem – Russia (fertilizer)</b>	St. John	\$ 1.5 billion	200	\$ 58K
<b>South Louisiana Methanol – U.S./New Zealand</b>	St. James	\$ 3.3 billion	63	\$ 66K
<b>Monsanto Expansion – U.S.</b>	St. Charles	\$ 975 million	95	\$ 76K
<b>Entergy   Little Gypsy Expansion – U.S.</b>	St. Charles	\$ 869 million	27	

# Economic Development

	<i>Parish</i>	<i>Capital Investment</i>	<i># Direct Jobs</i>	<i>Avg Salary</i>
<b>Pin Oak Terminals</b> – U.S. ( <i>crude oil</i> )	St. John	\$ 750 million	80 - 100	\$ 63K
<b>NuStar</b> – U.S. ( <i>crude oil tank storage</i> )	St. James	\$ 365 million	32	\$98K
<b>Syngas Energy</b> - Malaysia ( <i>methanol</i> )	St. James	\$ 360 million	86	\$ 78K
<b>Marubeni Corporation</b> ( <b>Gavilon Trading</b> ) - Japan ( <i>grain</i> )	St. James	\$ 250 million	100	
<b>BioAmber</b> - Canada ( <i>proppants</i> )	St. John	\$ 200 million	100	\$ 70K
<b>Bunge North America expansion</b> – U.S. ( <i>grain</i> )	St. Charles	\$ 140 million		

.....

# Economic Development

	<i>Parish</i>	<i>Capital Investment</i>	<i># Direct Jobs</i>	<i>Avg Salary</i>
<b>Plains All American – U.S.</b>	St. James	\$ 50 million		
<b>Momentive Specialty Chemicals – U.S.</b>	St. Charles	\$ 38 million	8	\$ 82K
<b>Kongsberg Maritime – Norway</b> <i>(office &amp; training)</i>	St. Charles	\$ 15 million	200	\$ 100K
<b>Denka Performance Elastomers – Japan</b> <i>(Corporate Headquarters)</i>	St. John		16 (corporate)	\$ 80K
<b>Formosa Petrochemical Corporation – Taiwan</b> <i>(industrial complex feasibility study)</i>	St. James	\$ 9.4 billion	1,200	\$ 84.5K

*Announced Future Projects: \$23.462 billion capital investment and, at least, 3,857 direct jobs*

# Container Terminal Project

## Shipping Cost Comparison

**ORIGIN: Shanghai**

**DESTINATION: Chicago**

<u>PORT</u>	<u>APPROXIMATE COST PER TEU</u>	<u>RAIL LINE</u>
Port of South Louisiana	\$ 688.00	Canadian National
Charleston	\$ 1,400.00	CSX Transportation
Oakland	\$ 1,551.00	Union Pacific
Seattle	\$ 969.00	BNSF Railway





## Port of South Louisiana Executive Regional Airport

- 5,100' x 75' Runway
- Jet-A & AvGas Fuel
- Video Surveillance
- FAA AWOS
- FBO Services
- Secured Aircraft Parking
- 10K sq. ft. hangar (available soon)

# PSL Consultants

## AUX INITIATIVES

General Robert Crear

## ADAMS & REESE

Jeff Brooks

## JAMES PURPERA GOVERNMENTAL CONSULTING

James Purpera

*CAPITAL OUTLAY SPECIALIST*

## TJC GROUP

Tim Johnson

*PUBLIC AFFAIRS/COMMUNITY OUTREACH*

*GOVERNMENTAL RELATIONS*

*WORKFORCE DEVELOPMENT*

## TOP DRAWER/FOCUS STRATEGIES

Mary Patricia Wray

Lauray Veazey

*Priority List*

---

# Emergency & National Security Projects

President-elect Trump

---

# 7. Mississippi River Shipping Channel Dredging, South Louisiana

1. Description: The complex of ports and shipping facilities located along the Mississippi River in South Louisiana is the largest in the Western Hemisphere by tonnage, connecting 31 up-river states to global markets. However, the Mississippi River Ship Channel depth is not sufficient to accommodate the deep-draft vessels now transiting the expanded Panama Canal, hurting the competitiveness of the ports and the inland industries dependent on them. Congress authorized a 50-foot channel depth in 1985, but the work has never been funded.

2. Authority: Port of South Louisiana/USACE

3. Cost: \$1 billion

4. Jobs: 200 Direct Jobs

5. Status

5.1. Engineering: in progress

5.2. Permitting: in progress

5.3. Funding: seeking Federal







Port of South Louisiana is ranked as the #1

***LARGEST TONNAGE PORT IN THE WESTERN HEMISPHERE!***



Port of South Louisiana is ranked as the #1

***GRAIN EXPORTER IN THE UNITED STATES!***





Port of South Louisiana is ranked as the #1

**FOREIGN TRADE ZONE (#124) IN THE U.S. FOR MERCHANDISE RECEIVED!**



Port of South Louisiana Is Ranked As One of the Top

***ENERGY TRANSFER PORTS IN THE UNITED STATES!***





...IMPORTANT TO OUR COMMUNITY

...IMPORTANT TO OUR STATE

...IMPORTANT TO OUR COUNTRY





...IMPORTANT  
TO THE WORLD!





**SUPPORT  
YOUR  
PORT!**



**THANK YOU**