

JOHN S. TEEGARDEN
 4635
 PROFESSIONAL LAND SURVEYOR
 STATE OF LOUISIANA
 No. 4635

BCM
 CORPORATION, L.L.C.
 Professional Land Surveyors
 534 WILLIAMS BOULEVARD
 SUITE 100
 METairie, LA 70002
 E-mail: jtee@bcmllc.com
 Tel No. (504) 477-0065
 Fax No. (504) 477-0065
 JEFFERSON PARISH, LOUISIANA, 70092

RESUBDIVISION OF LOTS 3-A-1-A, 4B, ORMOND CENTER, ORMOND CENTER PLANTATION INTO LOTS 3-A-1-A-1, 3-A-1-A-2, LOT 4B-2, 4B-3, 5, 6, 7, AND TRACT OCC, ORMOND CENTER, ORMOND PLANTATION DESTREHAN, ST. CHARLES PARISH, LOUISIANA

APPROVAL

DATE	BY	MARK

SCALE: 1" = 50'

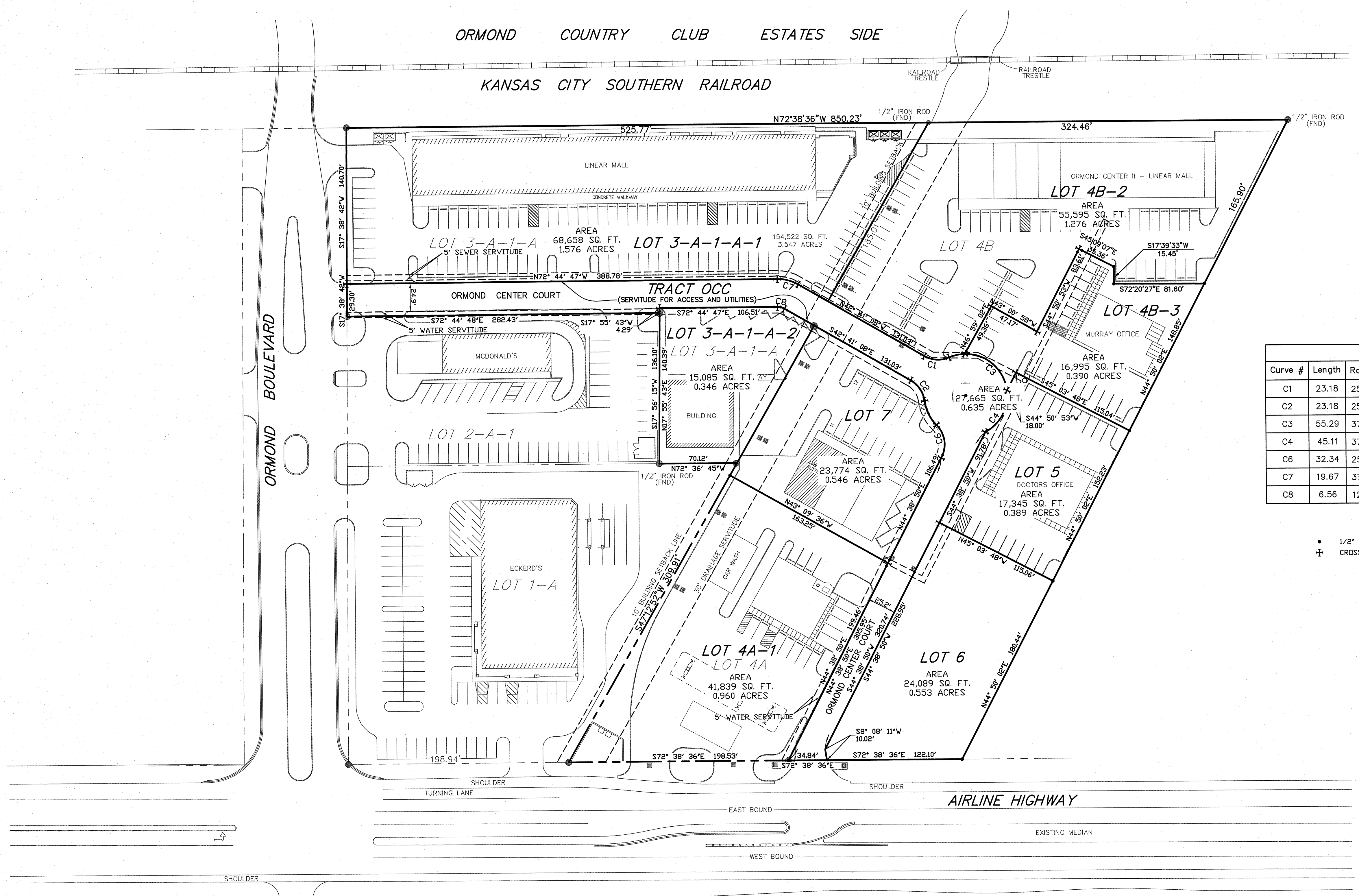
DATE	DESCRIPTION	REVISION RECORD

DRAWN BY: J.S.T. CHECKED BY: J.S.T.

DRAWING NO. 8517-ORMOND CENTER

PROJECT NO. 8517

SHEET 1 OF 1



Curve Table

Curve #	Length	Radius	CHORD DIRECTION	CHORD LENGTH
C1	23.18	25.00'	N69° 15' 03"W	23.18'
C2	23.18	25.00'	S16° 07' 14"E	23.18'
C3	55.29	37.50'	S31° 26' 41"E	55.29'
C4	45.11	37.50'	S45° 15' 28"W	45.11'
C6	32.34	25.00'	S9° 41' 09"W	32.34'
C7	19.67	37.50'	S57° 42' 58"E	19.67'
C8	6.56	12.50'	S57° 42' 58"E	6.56'

• 1/2" IRON ROD SET
 + CROSS CUT

RECORDED IN THE CLERK OF COURTS OFFICE, ST. CHARLES PARISH ON THE ___ DAY OF ___, 20___ IN CONVEYANCE BOOK ___ FOLIO ___ ENTRY NO. ___

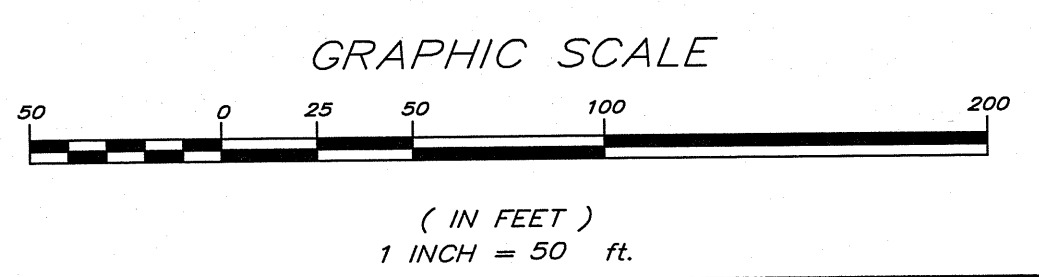
BASIS OF BEARING
 TAKEN FROM REFERENCED SURVEY PLAT NO. 1

SURVEY REFERENCE
 1. AS BUILT SURVEY OF LOT 3-A-1, ORMOND CENTER, ORMOND PLANTATION BY WJ MULLER, P.L.S., DATED 3/19/2001, REVISED 5/8/2001.
 2. SURVEY AND RESUBDIVISION OF LOT 4, ORMOND CENTER, ORMOND PLANTATION INTO LOTS 4A AND 4B BY JOHN S. TEEGARDEN, P.L.S., DATED 12/9/2003.

GENERAL NOTES
 THE LOCATIONS OF UNDERGROUND AND OTHER NONVISIBLE UTILITIES SHOWN HEREON HAVE BEEN DETERMINED FROM DATA EITHER FURNISHED BY THE AGENCIES CONTROLLING SUCH DATA AND/OR EXTRACTED FROM RECORDS MADE AVAILABLE TO US BY THE AGENCIES CONTROLLING SUCH RECORDS. WHERE FOUND, THE SURFACE FEATURES OF LOCATIONS ARE SHOWN. THE ACTUAL NONVISIBLE LOCATIONS MAY VARY FROM THOSE SHOWN HEREON. EACH AGENCY SHOULD BE CONTACTED RELATIVE TO THE PRECISE LOCATION OF ITS UNDERGROUND INSTALLATION PRIOR TO ANY RELIANCE UPON THE ACCURACY OF SUCH LOCATIONS SHOWN HEREON, INCLUDING PRIOR TO EXCAVATION AND DIGGING.

NOTES

- All necessary sewer, water and/or other utility extensions, relocations or modifications shall be made solely at the lot owner's expense. This is applicable to areas outside of servitudes for utilities.
- Tract Ormond Center Court is a private street and shall be maintained solely by the property owners, in accordance with the recorded servitude agreement.
- No barriers of any kind will be constructed between lots to prohibit, or discourage, the free and uninterrupted flow of vehicular, or pedestrian, traffic for parking and driveway access.
- All lot owners grant to others a non-exclusive and perpetual easement for parking and driveway areas to allow pedestrian and vehicular access.



APPROVAL

DATE _____ PLANNING COMMISSION CHAIRMAN

DATE _____ COUNCIL CHAIRMAN

DATE _____ PARISH PRESIDENT