



RIVER PARISHES TRANSIT AUTHORITY

2025 ST. CHARLES PARISH
COUNCIL PRESENTATION

JANUARY 12, 2026

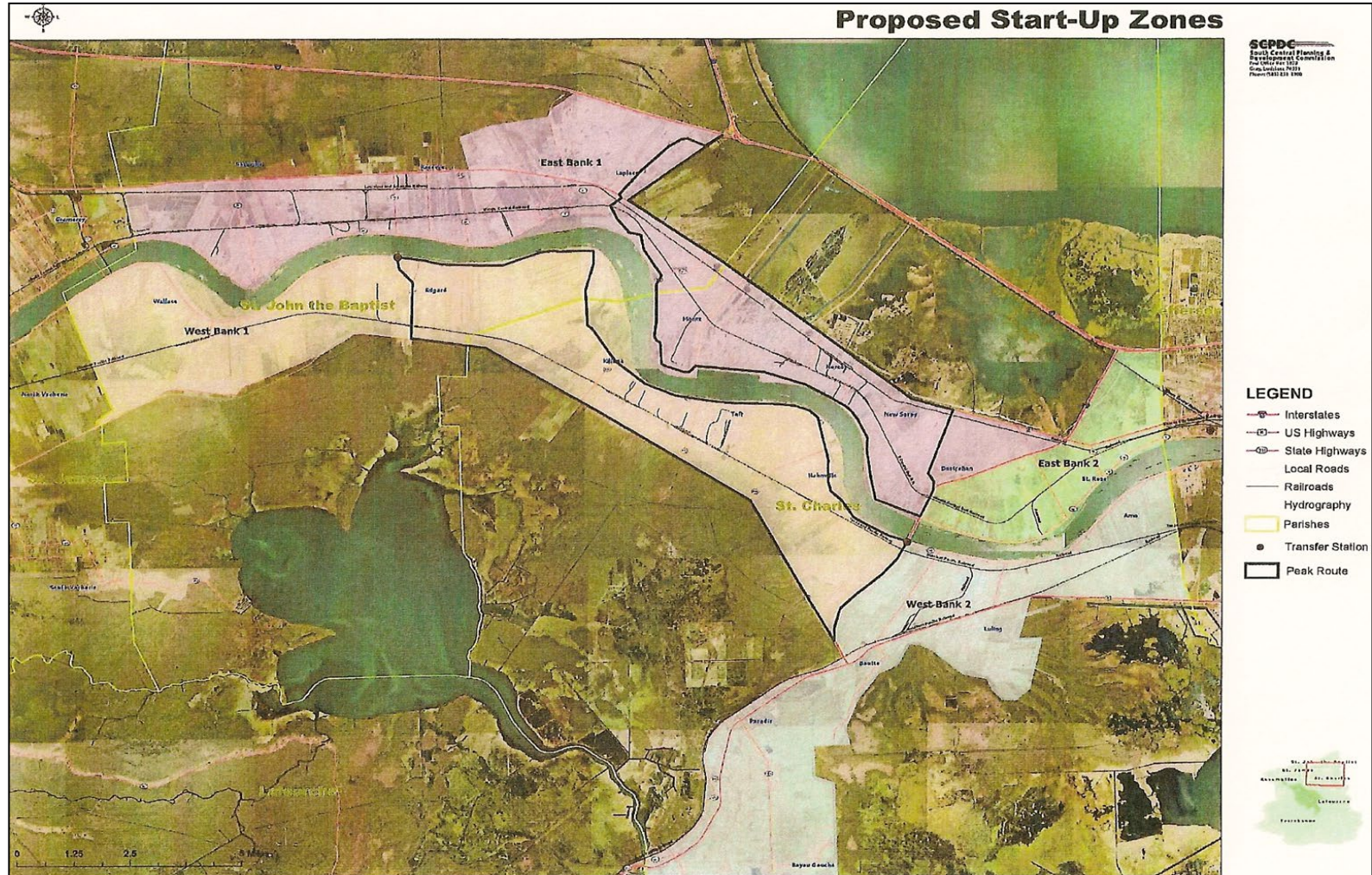
GENERAL OPERATIONS

- On-Demand service since February 2009
- Fare: \$2 one-way
- Service Hours: Monday – Friday, 5:00am to 6:30pm and Saturday, 5:30am to 6:30pm
- Connecting Service:
 - St. James Parish Transit, JPT (Jefferson), and RTA (Orleans)

2025 CAPITAL PROCUREMENTS

- The RPTA completed the procurement of replacement computer and radio equipment in 2025.

RPTA SERVICE AREA

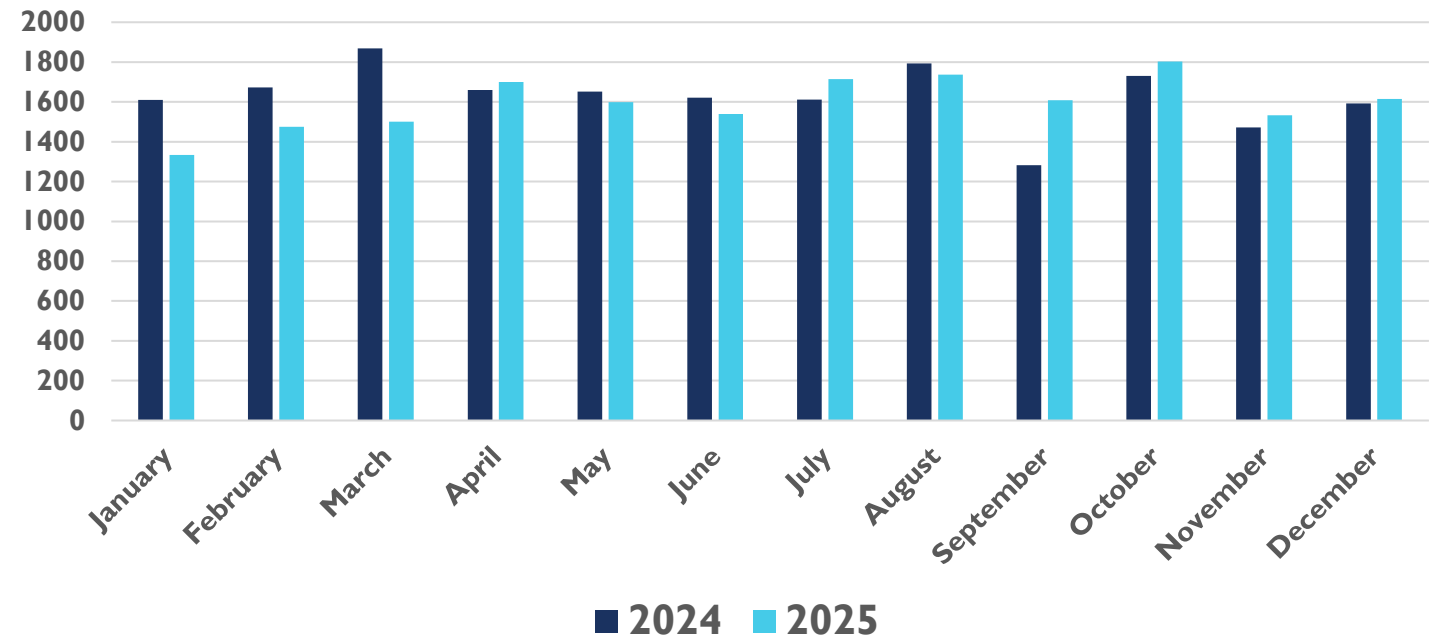


RIDERSHIP

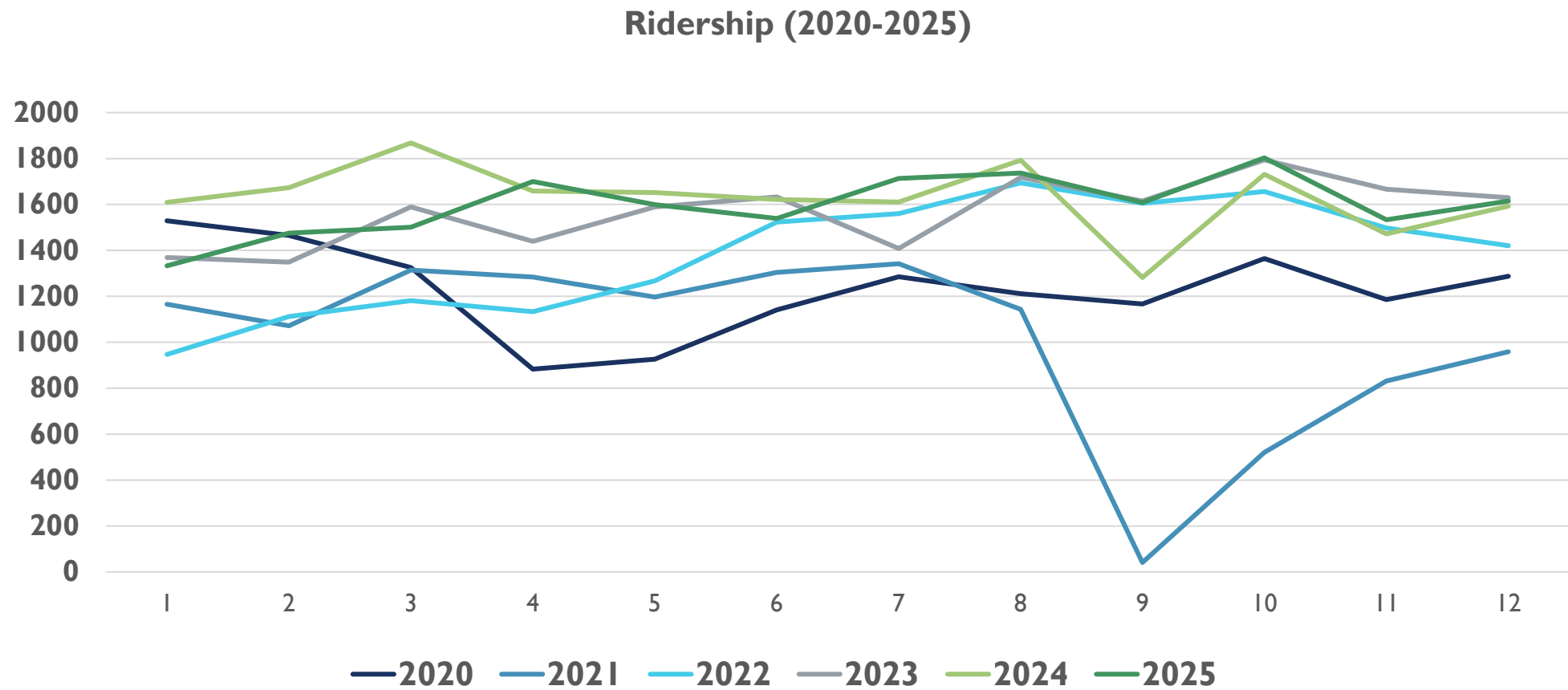
Total Ridership:

- 2024 ridership was 19,240
- 2025 ridership was 19,157
- 3 vehicles in service for a total of 40 hours weekdays
- 2 vehicles in service for a total of 26 hours Saturdays

2024 - 2025 Ridership



RIDERSHIP 2020-2025



RIDERSHIP – ST. CHARLES PARISH

- In 2025, an average of 26% of all rides originated and 25% ended in St. Charles Parish.
 - Cities/towns include, but are not limited to: Luling, Destrehan, Hahnville, Boutte, Paradis, St. Rose, Ama, Des Allemands and Norco.
- The majority are work-related with people going to/from their places of employment.
- The remaining trips are primarily to/from medical appointments (predominantly dialysis).

INCREASED SERVICE

The RPTA has increased service twice in response to passenger demand

- **Saturday Service:**

- Began February 2014
- 2 buses in service for a total of 28 hours

- **Weekday Extra Hour of Service:**

- Began March 2017
- 2 buses in service beginning at 5:00am rather than 5:30am

COST SAVING MEASURES

- To provide a more cost effective and efficient service, the RPTA Board reduced service by one hour per day, Monday-Saturday, effective September 1, 2025.

CITYWAYS – “A NEW WAY TO RPTA”

- In April 2021, the RPTA rolled out a 90-day soft launch of the Cityway's LINK application followed by a hard launch in August.
- LINK is an on-demand service scheduling system that allows passengers the ability to book trips on the RPTA website as well as the app available on Apple and Google Play stores.
- Passenger response has been extremely positive with nearly 80% of all bookings being made through the website or app and average trip ratings of 4.98 stars.
- Moreover, shared booking rates are higher, and mileage and fuel consumption are lower - thereby making the system overall much more efficient and cost-effective.

FUNDING SOURCES – Operations, Preventive Maintenance, and Capital

Grants	Farebox Revenue	Local Match
• Section 5311 (State)	• \$38,592 in 2025	• Estimated \$475,000 annually
• Section 5307 (Federal)	• Any carryover from previous years	• State, St. John & St. Charles

CHALLENGES

Transit systems do not “pay for themselves” with fare revenue.

- Movement from more rural service to more urban areas has greatly reduced our income from the State.
- Several Federal grants that were once available are no longer being offered by FTA.
- While we did receive 100% CARES Act, ARPA, and CRRSAA funding from the FTA in 2020, these funds are forecast to be depleted within 2026.

ORGANIZATION

RPTA Board Members

- St. Charles
 - Emile Broussard, III, Vice-Chairperson
 - Garrett Monti (At-Large)
 - Patrick Beard
- St. John
 - Michelle Jenkins
 - Whitney Joseph, Jr.
- St. James
 - Kerry Bourgeois
 - Shanitra Lewis, Chairperson

Contracted Agencies

- Transdev – Operations & Grant Management
- Solutient – Accounting & Oversight



CONTACT

- Anatola Thompson
Chief Financial Officer, Solutient
(504) 304-2000
athompson@solutient.com
- Stacy Van Sickle
General Manager/Grants Manager, Transdev
(504) 313-0176
stacy.vansickle@transdev.com
- Shanitra Lewis
RPTA Board Chairperson
(225) 624-9880
shanitra.jasmin@stjamesparishla.gov

