

2018 COUNCIL REPORT

Department of Homeland Security &
Emergency Preparedness



EOC LOG ENTRIES

In 2017 we had **15,443** log entries

So far, in 2018, we have **5,400+** log entries



2017 - 2018 EMERGENCY ACTIVATIONS YEAR-IN-REVIEW

Alert/SAE #	Description	Onset Date
A-1	Tornado Warning	1/21/17
A-2	Tornado Warning	2/7/17
A-3	Tornado Warning	2/7/17
A-4 / SAE-1	Pipeline Fire	2/9/17
A-5	Fuel Tanker Fire	3/27/17
A-6	Fuel Tanker Fire	4/13/17
A-7	Tornado Warning	5/12/17
A-8 / SAE-2	Tropical Storm Cindy	6/20/17
A-9 / SAE-3	Tropical Storm Harvey	8/27/17
A-10	Tornado Warning	8/28/17
A-11	Hurricane Irma	9/9/17
GE-1	Tropical Storm Nate	10/5/17

Alert/SAE #	Description	Onset Date
A-1 / SAE-1	Winter Weather	1/16/18
A-2	Tornado Warning	4/7/18
A-3	Tornado Warning	4/22/18
A-4	Industrial Fire	4/27/18



2017 CLASSIFIED EVENTS YEAR-IN-REVIEW

Category	Number	Percent
Industrial	94	43%
Miscellaneous	58	26%
Natural	56	26%
Homeland Security	11	5%

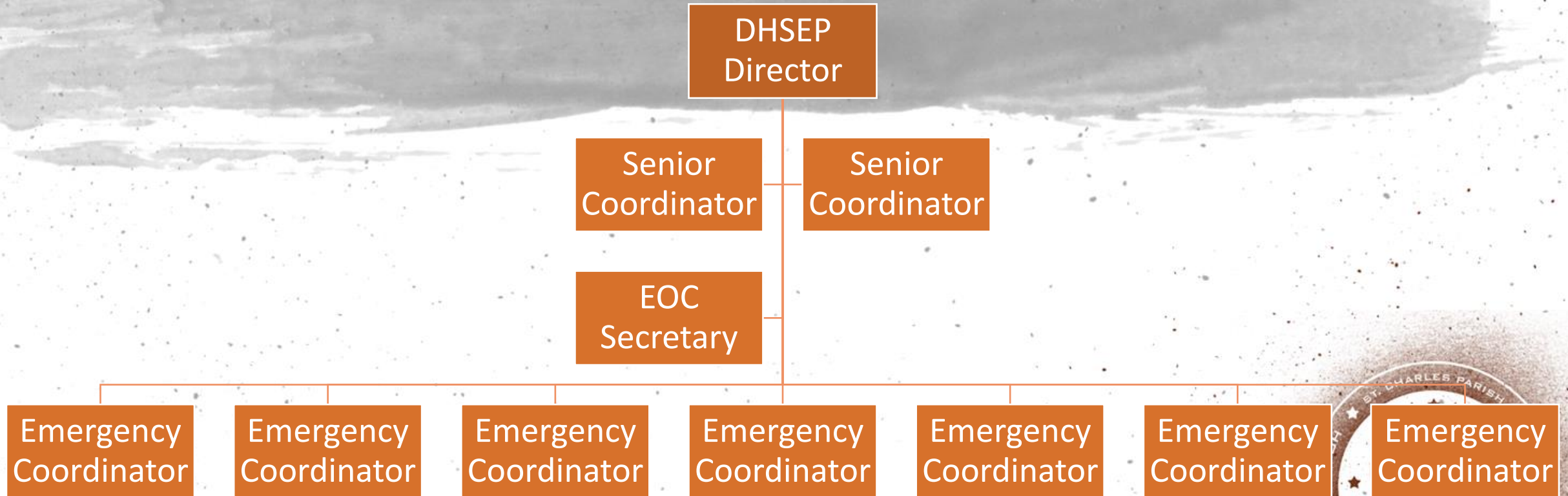


2018 EXERCISES

- Regional CRI FSE (February)
- Haz-Trans (March)
- Statewide Regional Functional Exercise (April)
- Region3 Hurricane Coordination Exercise (April)
- In-Parish Shelter Setup (May)
- Home Health / Nursing Home Emergency Planning Exercise (May)
- Industry Hurricane Exercises (June) (Monsanto and Koch)
- PSL Functional Hurricane Exercise (June)
- Annual Waterford 3 Emergency Plan Training (June)
- NOLA AMSC Active Shooter Tabletop Exercise (June)



WHO WE ARE AND WHAT WE DO



EOC DIRECTOR

- Responsible for the **OVERALL** direction of emergency preparedness:
 - Reporting to Parish President
 - Educating the public
 - Maintaining relationships with other emergency officials



EOC SENIOR COORDINATORS

- **JASON TASTET**
 - **FOCUS: Natural Hazards**
 - **Hazard Mitigation Planning**
 - **Hurricane planning and education**
 - **EOC building operation and maintenance**
 - **Lead the EOC between Directors**



EOC SENIOR COORDINATORS

- **JIM POLK**

- **FOCUS: Man-made disasters (industrial, hazardous materials, and terrorism)**

- **Industrial site awareness**
- **HAZMAT training**
- **NIMS /ICS training**
- **SRT with St. Charles Sheriff's Office.**
- **PRAT Team**
- **LEPA Chairperson**
- **LERC (Louisiana Emergency Response Commission)**



EMERGENCY COORDINATORS

- **James Kokemor**
 - Technology focus
 - Performs technology audit annually
 - Keeps all systems operational
- **George Dugas**
 - Health and Medical focus
 - Works to coordinate special needs individuals



EMERGENCY COORDINATORS

- **Michael Tregre**
 - HAZMAT and Parish Rapid Assessment Team
 - Maintains all hazmat response gear
 - Maintains the Mobile Communications Unit
- **Eric Zammit**
 - Natural Disaster and Sheltering Focus
 - Puts together annual hurricane exercise
 - Experience with operating emergency shelters



EMERGENCY COORDINATORS

- **Lee Hebert**
 - Industrial Hazards and Training Focus
 - Responsible for tracking training for department
 - HAZMAT knowledge
- **John Sirmon**
 - Planning and Procedures focus
 - Provides oversight on review and maintenance of All Hazards Plan and procedures
 - Maintains 'big picture' planning and direction



EMERGENCY COORDINATORS

- **Brandon Touchard**
 - Strategic National Stockpile and City Readiness Initiative focus
 - Maintains much of the department's daily functions
 - Highest seniority among Emergency Coordinators



**2018
Hurricane
Preparedness**

June 4, 2018



Joe Ganote

Director of
Emergency
Preparedness

Larry Cochran

Parish President

2017 Hurricane Season

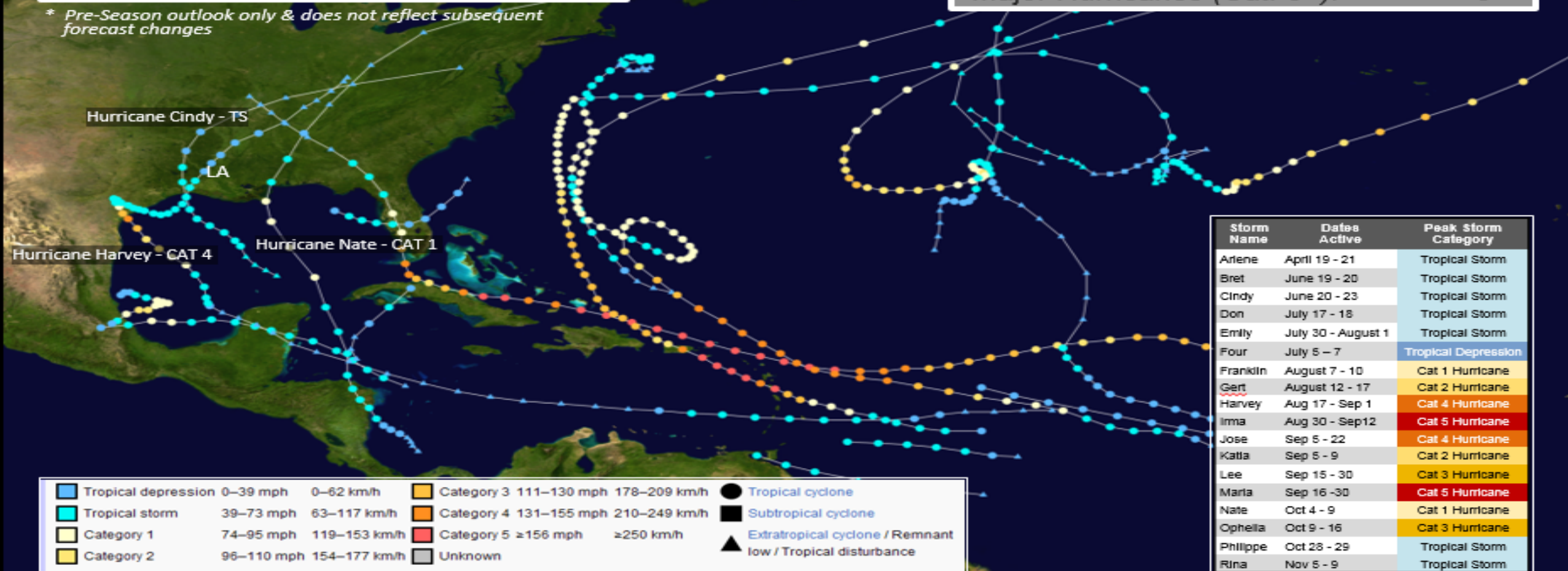
* NOAA Pre-Season Outlook

Named Storms:	11 - 17
Anticipated Hurricanes:	5 - 9
Major Hurricanes:	2 - 4

* Pre-Season outlook only & does not reflect subsequent forecast changes

Actual Storms

Depressions:	1
Total Named Storms:	17
Hurricanes (Cat 1 & 2):	10
Major Hurricanes (Cat. 3+):	6



Storm Name	Dates Active	Peak Storm Category
Arlene	April 19 - 21	Tropical Storm
Bret	June 19 - 20	Tropical Storm
Cindy	June 20 - 23	Tropical Storm
Don	July 17 - 18	Tropical Storm
Emily	July 30 - August 1	Tropical Storm
Four	July 5 - 7	Tropical Depression
Franklin	August 7 - 10	Cat 1 Hurricane
Gert	August 12 - 17	Cat 2 Hurricane
Harvey	Aug 17 - Sep 1	Cat 4 Hurricane
Irma	Aug 30 - Sep 12	Cat 5 Hurricane
Jose	Sep 5 - 22	Cat 4 Hurricane
Katia	Sep 5 - 9	Cat 2 Hurricane
Lee	Sep 15 - 30	Cat 3 Hurricane
Marta	Sep 16 - 30	Cat 5 Hurricane
Nate	Oct 4 - 9	Cat 1 Hurricane
Ophelia	Oct 9 - 16	Cat 3 Hurricane
Phillippe	Oct 28 - 29	Tropical Storm
Rina	Nov 5 - 9	Tropical Storm

Tropical depression	0-39 mph	0-62 km/h	Category 3	111-130 mph	178-209 km/h	Tropical cyclone
Tropical storm	39-73 mph	63-117 km/h	Category 4	131-155 mph	210-249 km/h	Subtropical cyclone
Category 1	74-95 mph	119-153 km/h	Category 5	≥156 mph	≥250 km/h	Extratropical cyclone / Remnant low / Tropical disturbance
Category 2	96-110 mph	154-177 km/h	Unknown			

2018 Atlantic Tropical Cyclone Names

Hurricane season runs from June 1st to November 30th annually

Alberto

Beryl

Chris

Debby

Ernesto

Florence

Gordon

Helen

Isaac

Joyce

Kirk

Leslie

Michael

Nadine

Oscar

Patty

Rafael

Sara

Tony

Valerie

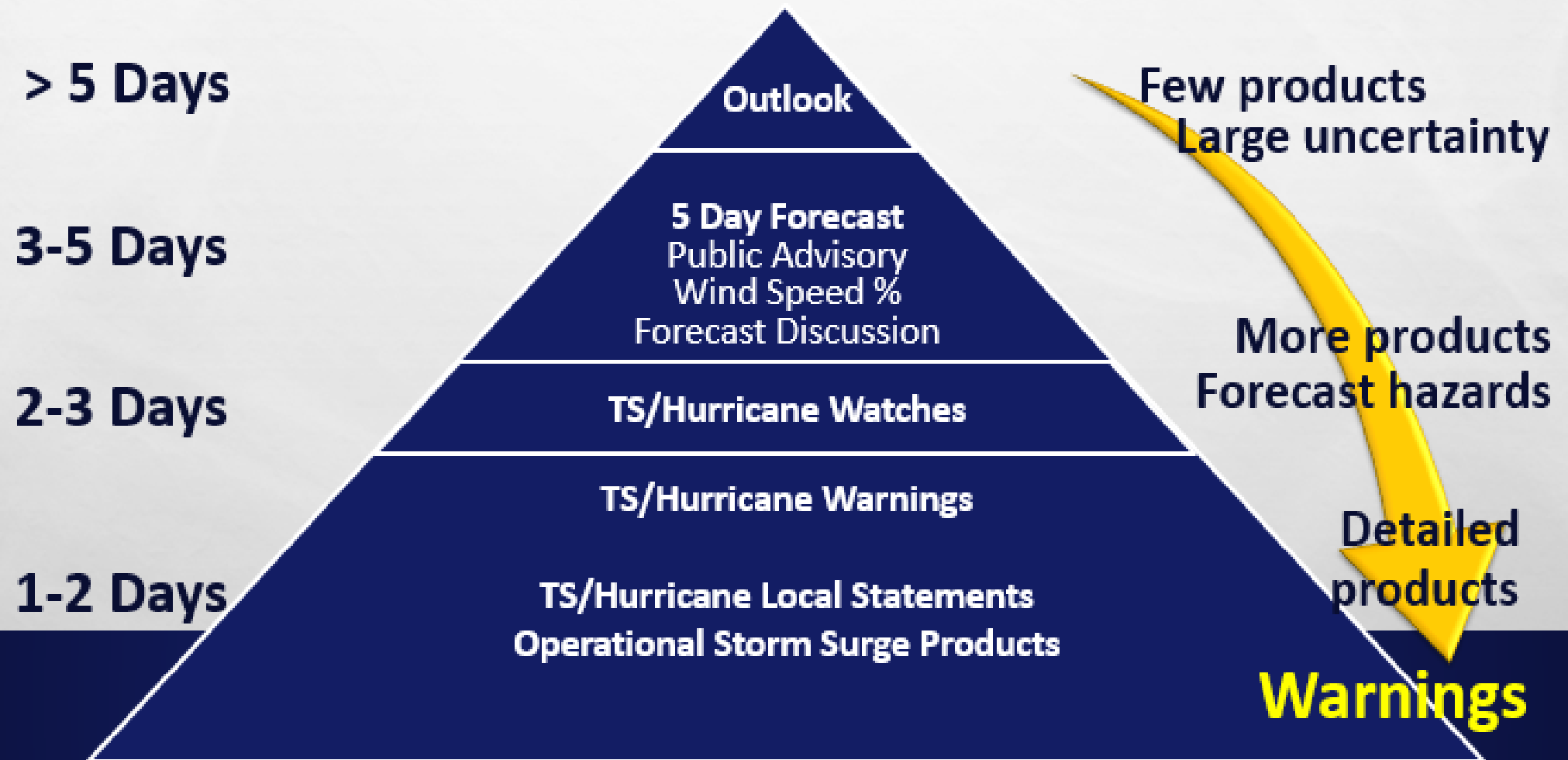
William

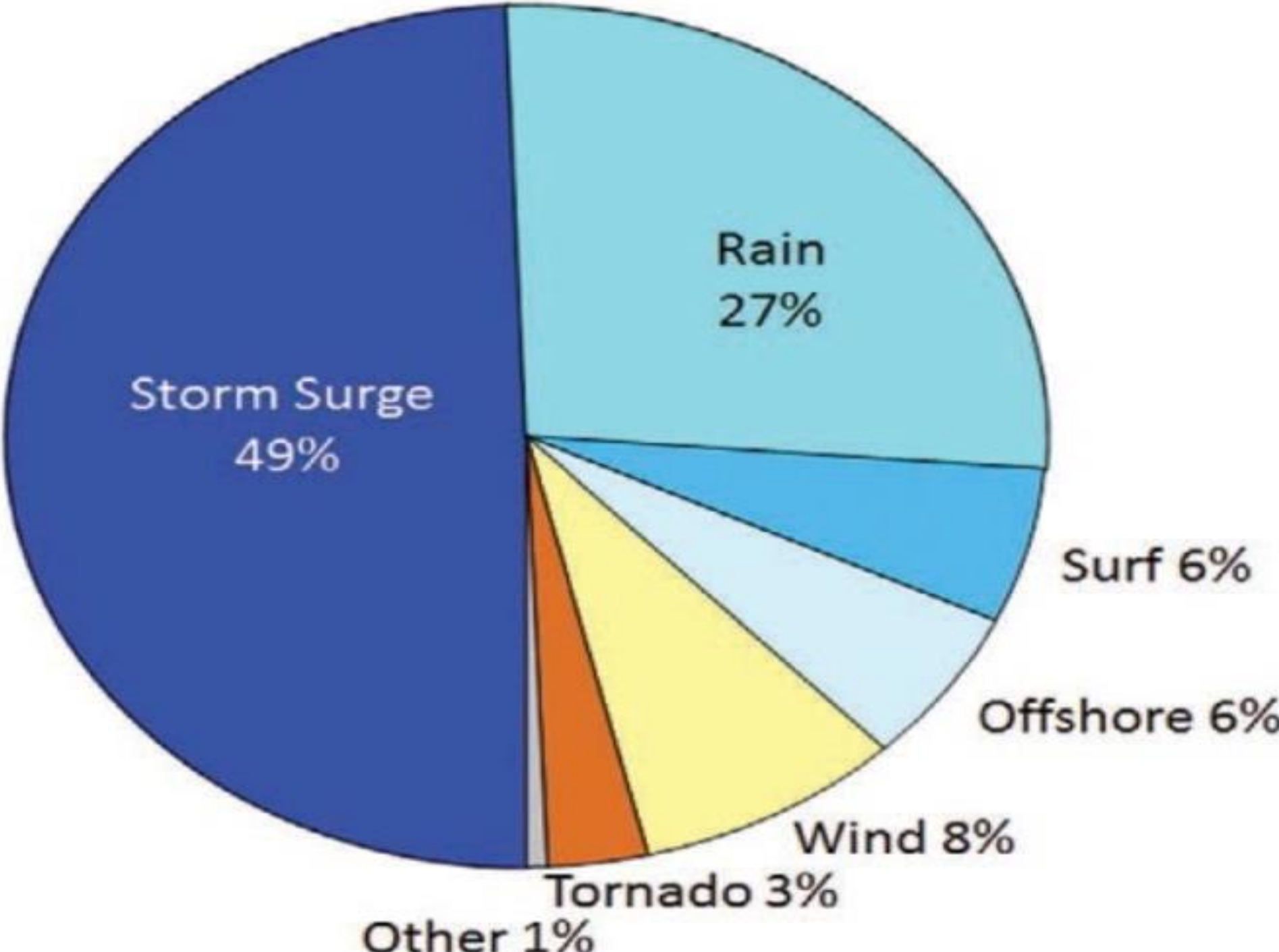
NOAA 2018 Seasonal Outlook

- NOAA forecast a **near-normal season** is most likely (40% chance), followed by a 35% chance of an above-normal season & a 25% chance of a below-normal season
- Predictions (*70% probability for the following of activities*):
 - ▶ **10 - 16** Named Storms
 - ▶ **5 - 9** Hurricanes
 - ▶ **1 - 4** Major Hurricane (*Category 3 or greater*)
- Forecast Basics:
 - ▶ Outlook reflects the current **neutral El Niño/La Niña status** in the Pacific along with anomalously **cool sea-surface temperatures** in the Atlantic hurricane Main Development Region
 - ▶ Looking forward, there is considerable **uncertainty in the predictions** for both El Niño & Atlantic sea-surface temperatures during the August-October period

* Saffir/Simpson category 3 - 5 are considered major hurricanes

National Weather Service Tropical Cyclone Products







Factors Influencing Storm Surge

1. Where the circulation center crosses the coast
2. Direction of storm motion relative to the coast
3. Wind strength (storm intensity)
4. Radius of maximum winds
5. Overall size of storm (outer wind radii)
6. Slope of the continental shelf
7. Shape of the coastline and other coastal features (barrier islands, bays, rivers, levees, etc)

...It's Complicated!



STORM SURGE: BEFORE



STORM SURGE: AFTER

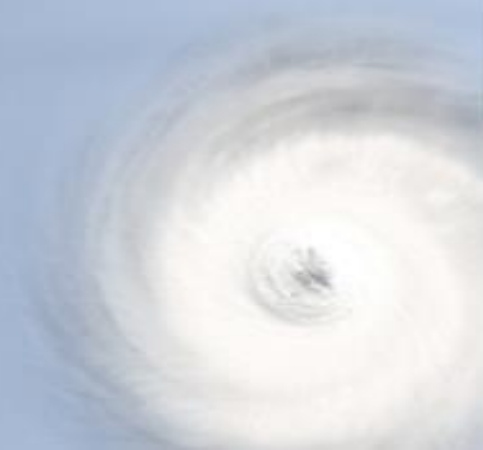




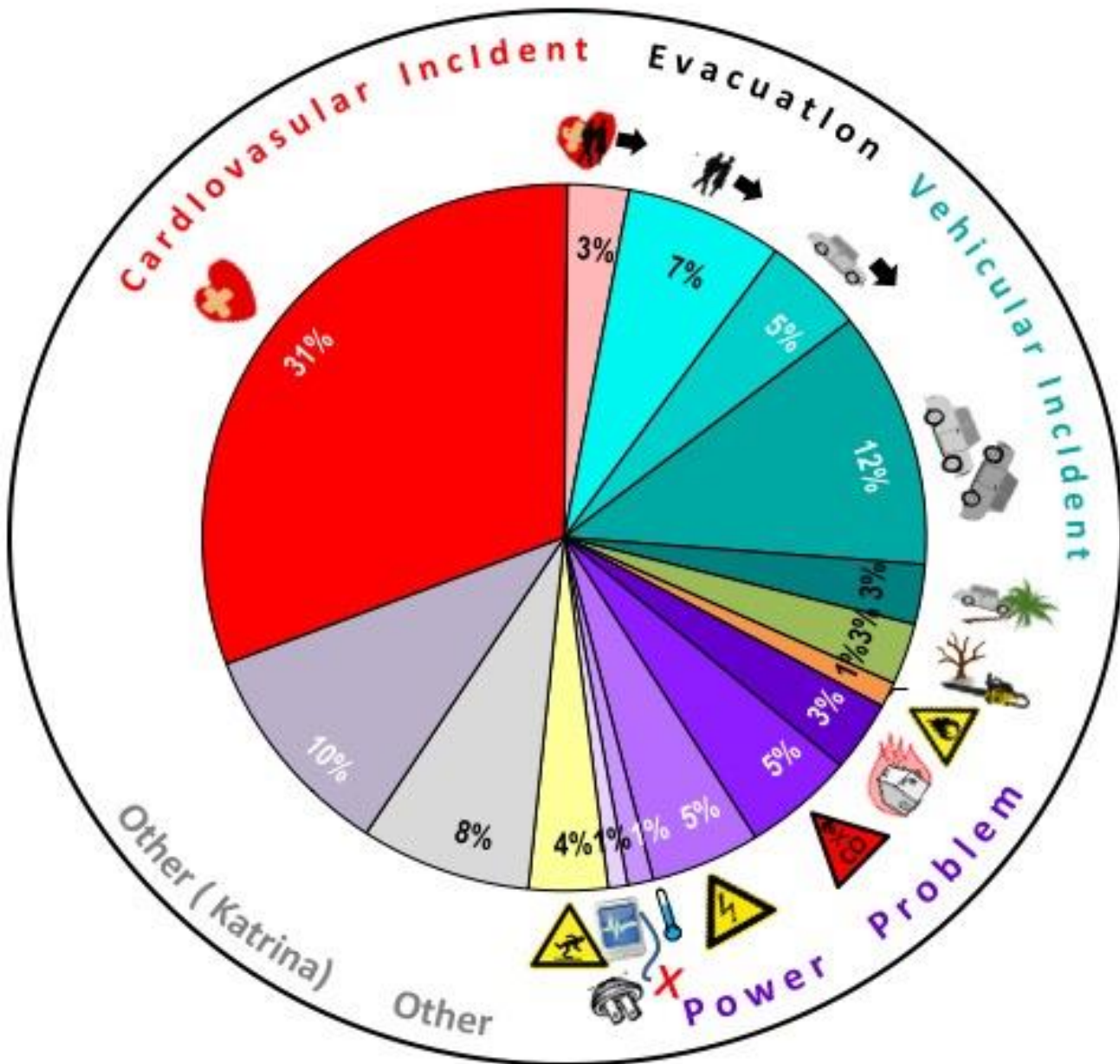
Factors Influencing Inland Flooding

1. Forward Speed (slower more rain)
2. Size (bigger more rain)
3. Rain Rate (atmospheric moisture content)
4. Vertical Wind Shear (more rain on one side)
5. Topography (more rain on windward side)
6. Fronts/Upper-Level Troughs

...It's Complicated!



U.S. Atlantic Tropical Cyclone Indirect Deaths, 1963-2012



-  Cardiovascular failure
-  Cardiovascular failure of evacuee
-  Evacuation (not with vehicle)
-  Vehicle accident w/evacuation (not with tree)
-  Vehicle accident (not w/evacuation, not with tree)
-  Vehicle hit downed tree
-  Tree work
-  Fire (not from open flame at residence)
-  Residential fire from open flame
-  Carbon monoxide poisoning
-  Electrocution
-  Hypothermia
-  Medical equipment outage
-  Fall





Communicating Risk

- “This is just a CAT 1 hurricane”
- “It has never flooded here before”
- “I’ve been through Katrina and Gustav, this is nothing”
- “I saw the news break into programming, that GFS thing says it won’t come here, phew!”
- “This is the same surge forecast as Gustav and I didn’t flood then”
- “My app has most of those lines way east of here. I like the one that says CLIPER”
- “We are going to evacuate for all CAT1 hurricanes from now on”
- “Ah great, I have a GIS map. Finally something accurate”
- “We just had our 100 year storm last year”



STAY INFORMED

- SCP-TV (COX CHANNEL 6 & ATT OVERSE CHANNEL 99)
- ST. CHARLES PARISH WEBSITE ([HTTP://STCHARLESPARISH-LA.GOV/](http://stcharlesparish-la.gov/))
- SCP FACEBOOK ([HTTPS://WWW.FACEBOOK.COM/STCHARLESGOV](https://www.facebook.com/stcharlesgov))\
- SCP TWITTER ([@STCHARLESGOV](https://twitter.com/stcharlesgov))
- SCP YOUTUBE ([HTTPS://WWW.YOUTUBE.COM/STCHARLESGOV](https://www.youtube.com/stcharlesgov))
- EMERGENCY MESSAGING SYSTEM ([WWW.SCPEMERGENCYALERTS.COM](http://www.scpemergencyalerts.com))
- 1370 AM

Questions?

St. Charles Parish Department of Homeland
Security and Emergency Preparedness

15026 River Road

Hahnville, LA 70057

Phone: 985-783-5050

www.stcharlesparish-la.gov