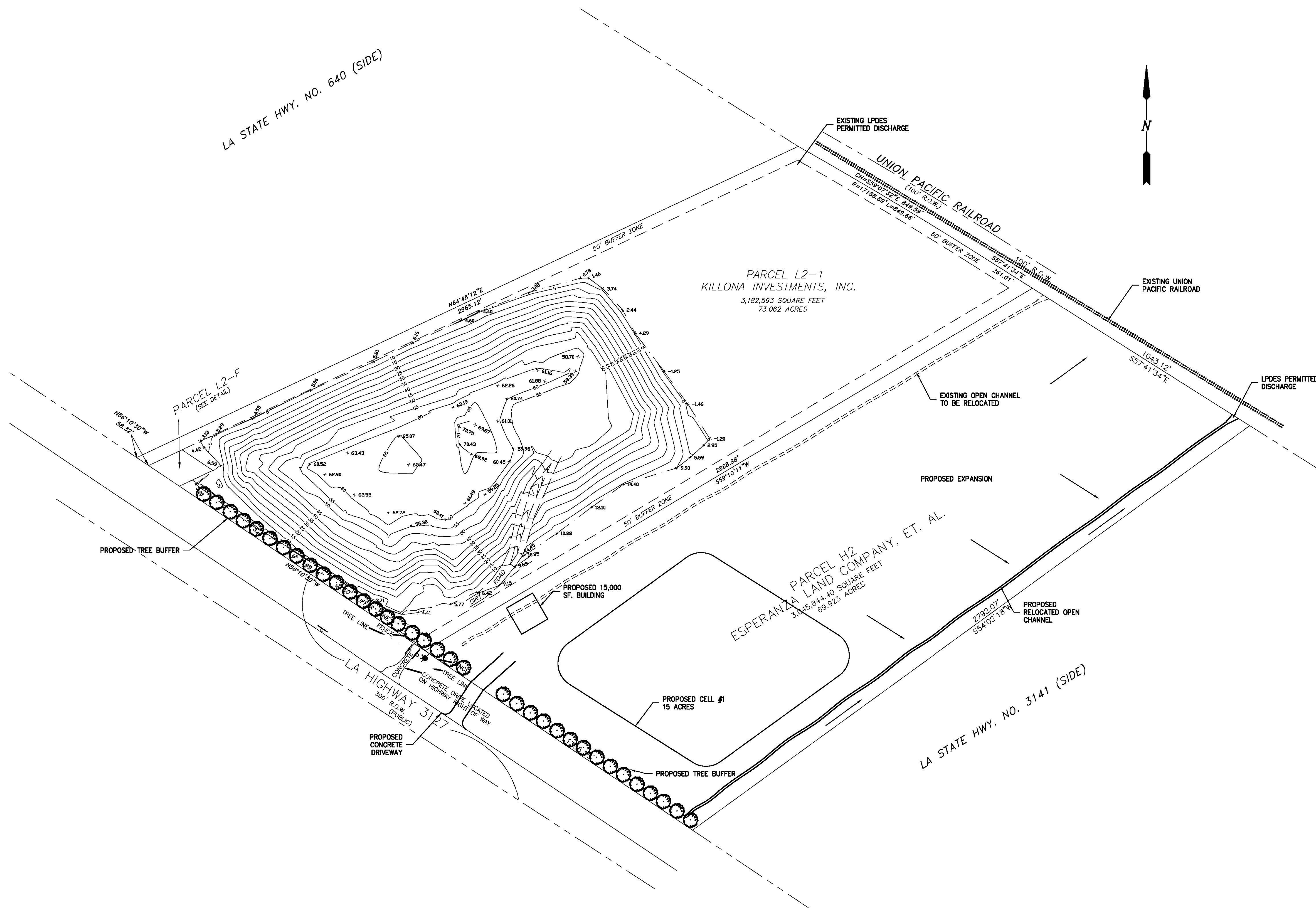


DRAINAGE SHALL BE COMPUTED AT PRE-CONSTRUCTION RUNOFF RATES PER APPLICABLE MUNICIPAL CODES AND STANDARDS. IMPROVEMENTS AND MODIFICATIONS TO DRAINAGE SHALL CONFORM TO ST. CHARLES PARISH PUBLIC WORKS DEPARTMENT STANDARDS.

—→ FLOW DIRECTION ARROW



PRELIMINARY DRAINAGE
MASTER PLAN
SCALE: 1-200

FOR APPROVAL ONLY
DATE: 02/07/17

[illegible]

