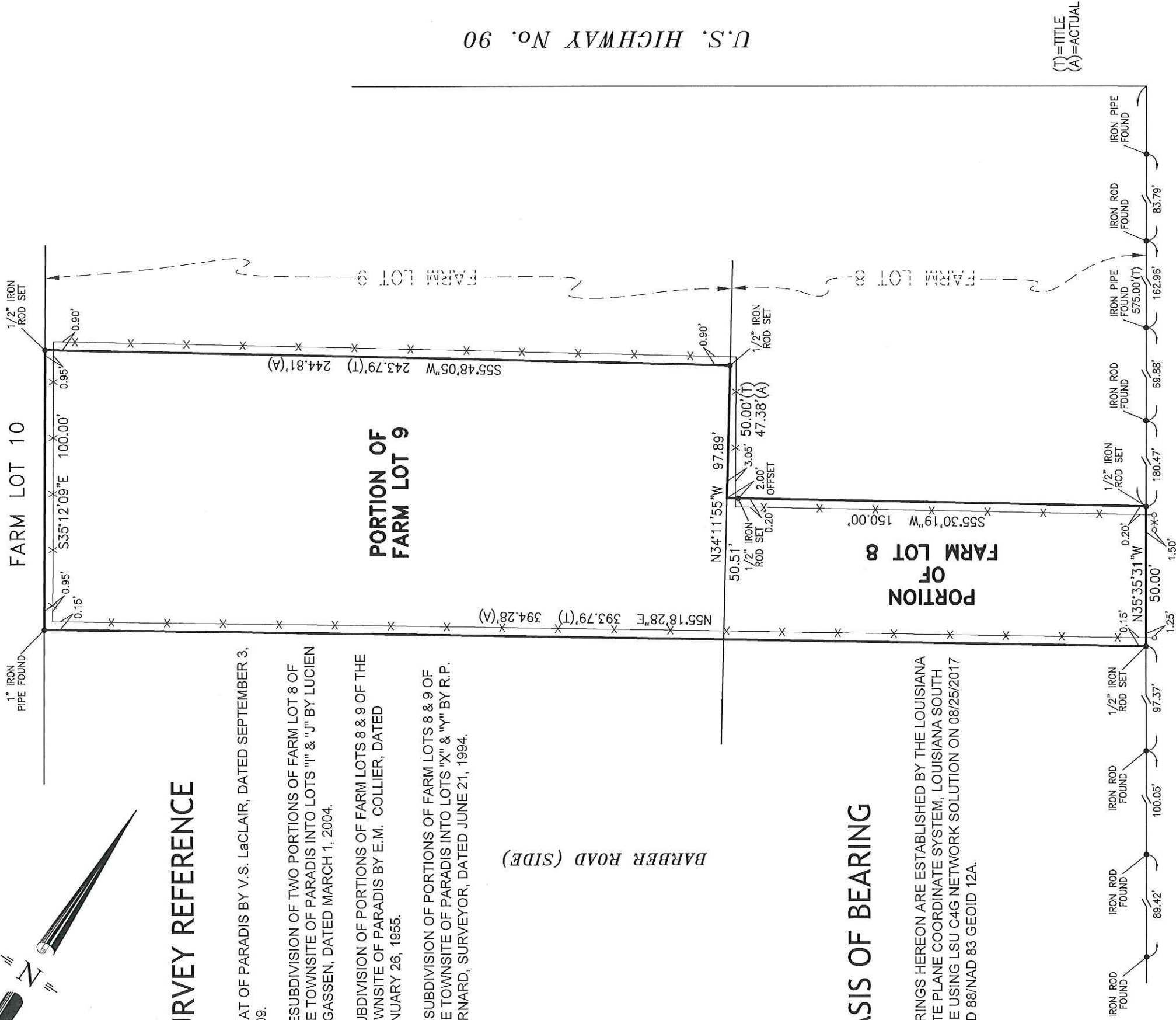


TRAVIS STREET (SIDE)



U.S. HIGHWAY No. 90

(T)=TITLE
(A)=ACTUAL

SURVEY REFERENCE

1. PLAT OF PARADIS BY V.S. LaCLAIR, DATED SEPTEMBER 3, 1909.
2. RESUBDIVISION OF TWO PORTIONS OF FARM LOT 8 OF THE TOWNSITE OF PARADIS INTO LOTS "I" & "J" BY LUCIEN C. GASSEN, DATED MARCH 1, 2004.
3. SUBDIVISION OF PORTIONS OF FARM LOTS 8 & 9 OF THE TOWNSITE OF PARADIS BY E.M. COLLIER, DATED JANUARY 26, 1955.
4. RESUBDIVISION OF PORTIONS OF FARM LOTS 8 & 9 OF THE TOWNSITE OF PARADIS INTO LOTS "X" & "Y" BY R.P. BERNARD, SURVEYOR, DATED JUNE 21, 1994.

BARBER ROAD (SIDE)

BASIS OF BEARING

BEARINGS HEREON ARE ESTABLISHED BY THE LOUISIANA STATE PLANE COORDINATE SYSTEM, LOUISIANA SOUTH ZONE USING LSU C4G NETWORK SOLUTION ON 08/25/2017 NAVD 88/NAD 83 GEOID 12A.

WISNER STREET

NOTE:
Improvements may not be to scale for clarity. The dimensions shown prevail over scale.

<p>"AS-OCCUPIED" SURVEY OF A PORTION OF FARM LOTS 8 & 9 VILLAGE OF PARADIS ST. CHARLES PARISH, LOUISIANA</p>	<p>DADING, MARQUES & ASSOCIATES, LLC</p> <p>P.O. BOX 790 METAIRIE, LA. 70004 (504) 834-0200</p>		<p>CODY A. DiMARCO P.L.S. LA. ST. REG. NO. 50689</p>	
	<p>I CERTIFY THAT THIS SURVEY AND PLAT WAS PREPARED BY ME OR BY THOSE UNDER MY DIRECT SUPERVISION. MADE AT THE REQUEST OF: BAYOU TITLE, INC. AND DAVID P. PRICE</p>		<p>THIS PLAT IS CORRECT AND IN ACCORDANCE WITH A PHYSICAL SURVEY MADE ON THE GROUND UNDER THE DIRECTION OF THE UNDERSIGNED AND COMPLIES WITH THE REQUIREMENTS OF LOUISIANA'S "STANDARDS OF PRACTICE FOR BOUNDARY SURVEYS" FOR A CLASS "C" SURVEY</p>	
DATE:	SCALE:	DRAWN BY:	CHECKED BY:	JOB NO.:
8-15-2017	1" = 40'	R.J.R.	C.A.D.	55842