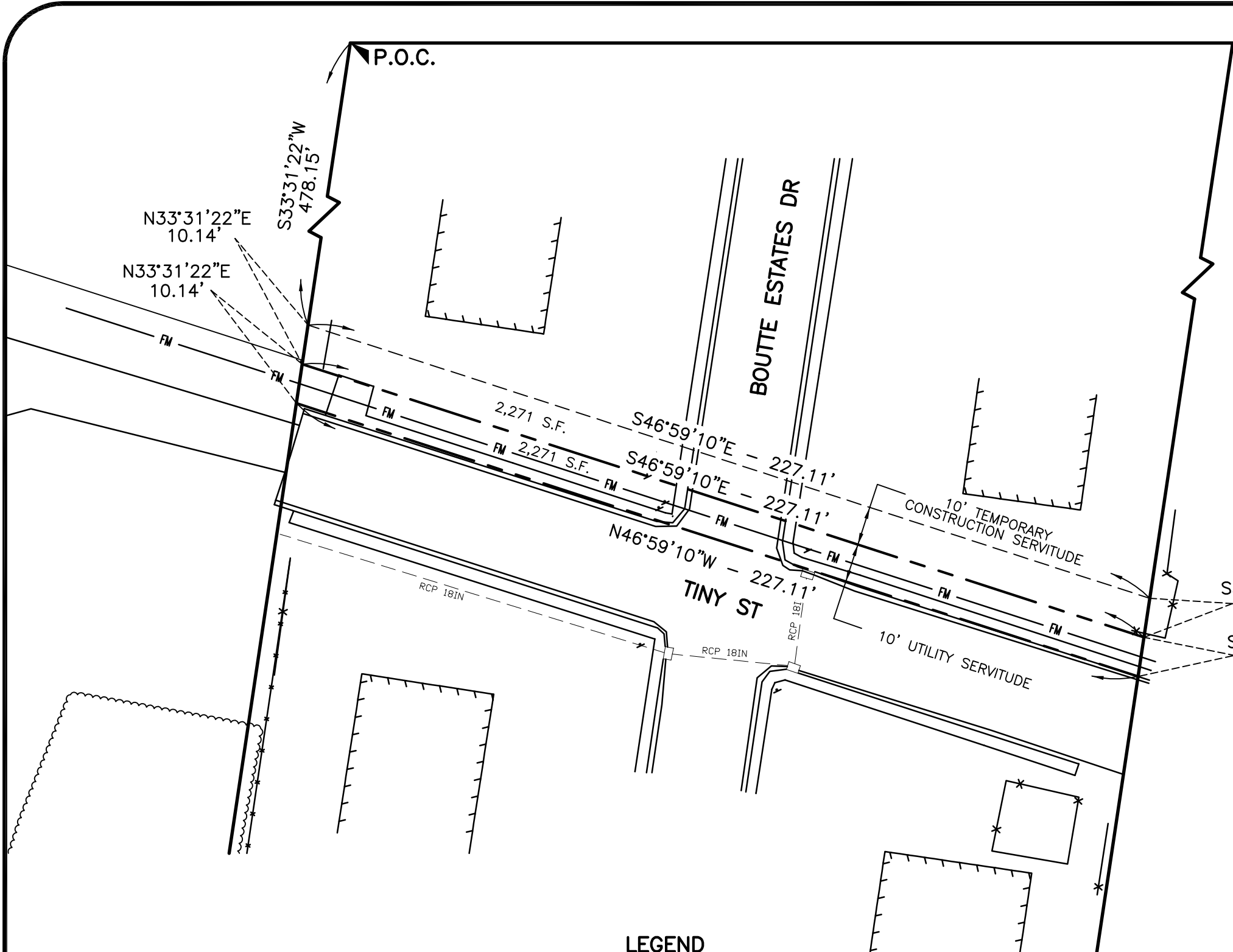
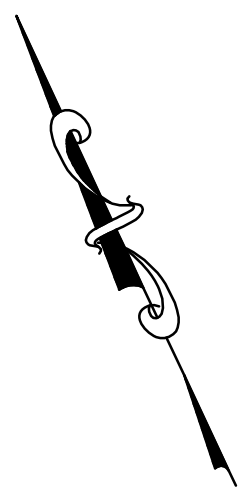


NOTE:
BEARINGS ARE BASED ON THE "LOUISIANA
COORDINATE SYSTEM OF 1983 SOUTH ZONE"



**PROPOSED UTILITY SERVITUDE AND TEMPORARY
CONSTRUCTION SERVITUDE ACROSS
ST. CHARLES PARISH HOUSING AUTHORITY
LOCATED IN SECTIONS 88 & 89, T13S-R20E
ST. CHARLES PARISH, LOUISIANA**

BAYOU COUNTRY SURVEYING, LLC
Professional Land Surveyors
PO Box 156 Labadieville, LA. 70372
Office 985-526-0016

DESIGNED: HES	DETAILED:	TRACED:
CHECKED: HES	CHECKED: HES	CHECKED:
DATED: 5/10/2012 FILE: Z:\BAYOU_COUNTRY_SURVEYING\JOBS2\1739\HOUSING AUTHORITY JOB NO: 1739		

LEGEND

- PROPOSED SERVITUDE LINE -----
- PROPOSED TEMPORARY CONSTRUCTION LIMITS - - - - -
- PROPOSED SEWER FORCE MAIN ——— FM ———

SCALE IN FEET

