



**A SAFETY NET FOR STRUGGLING FAMILIES
THROUGHOUT ST. CHARLES PARISH**

WHO ARE THE HOUSEHOLDS THAT ARE STRUGGLING?

Asset

Limited

Income

Constrained

Employed

Households that earn more than the U.S. poverty level, but less than the basic cost of living for the parish.

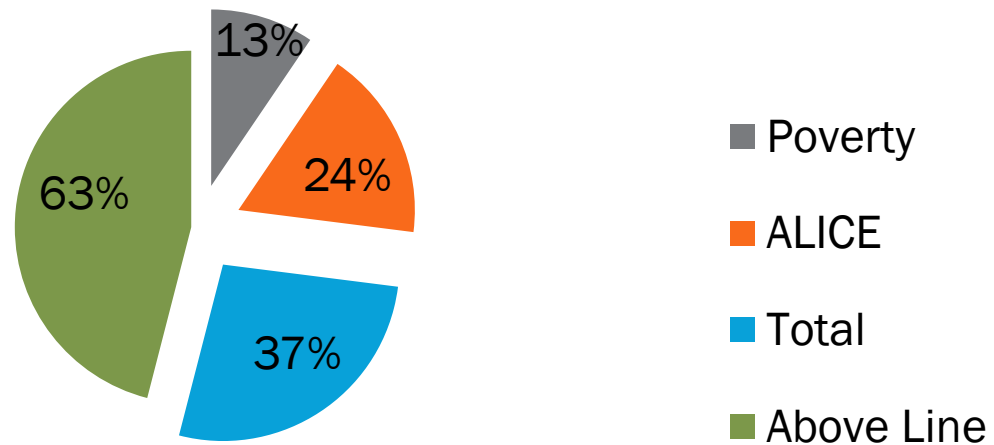
Combined, the number of poverty and ALICE households equals the total population struggling to afford basic needs.



ALICE IN ST. CHARLES PARISH



13 % Poverty - 24% ALICE



ALICE

St. Charles Parish, (2013)

Town	Total HH	% ALICE & Poverty
Ama	537	24%
Bayou Gauche	1,047	26%
Boutte	891	36%
Des Allemands	690	51%
Destrehan	3,992	23%
Hahnville	1,217	45%
Killona	261	76%
Luling	4,411	34%
Montz	646	29%
New Sarpy	574	58%
Norco	1,162	33%
Paradis	288	30%
St. Rose	2,928	40%

DEPARTMENT INTAKE DATA: 2015

897 Applied for Emergency Assistance
266 (30% new clients)

East Bank= 55%	West Bank= 45%
3% Montz	22% Luling/Boutte
4% Norco	2% Ama
4% New Sarpy	14% Hahnville/Killona
16% Destrehan	1 % Paradis
28% St. Rose	6 % Des Allemands

2015 LOW INCOME HOME ENERGY ASSISTANCE

Families Served	Amount
602	\$247,300

Crisis Application	Amount
60	\$15,339



EMERGENCY ASSISTANCE



255
Thanksgiving
Baskets



160 Families
Local
Emergency
Assistance

ATMOS
energy

21 ATMOS
Share the
Warmth
Applications

SECOND HARVEST FOOD BANK



230 Boxes

Impacting 404
SCP Residents

COMMUNITY CENTER PROGRAMS-2015

Drop In	Summer	Snacks	Special Programs
106	85* 2 sites	2,138	178

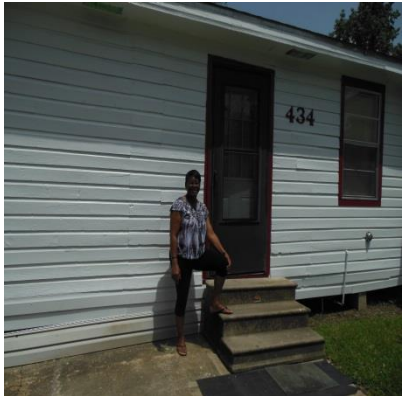


HOME REPAIRS

43 Health and Safety Projects Completed

15 Ramps

3 HUD H.O.M.E. Projects



SUMMER FEEDING PROGRAM

Three Sites

7,638 meals served



SPECIAL PROGRAM INITIATIVES

Lifeskills

- 10 Sessions
- 47 Participants

Youth Rally

- 500 participants

Mortgage Assistance

DCSF Partner Site



MAKING A DIFFERENCE IN OUR COMMUNITY

