



St. Charles Parish Meeting Minutes

St. Charles Parish Courthouse
15045 Highway 18
P.O. Box 302
Hahnville, LA 70057
985-783-5000
scpcouncil@st-charles.la.us
<http://www.stcharlesparish-la.gov>

Parish Council

Draft

*Council Chairman Billy Raymond, Sr.
Councilmembers Carolyn K. Schexnaydre, Terry Authement,
Shelley M. Tastet, Wendy Benedetto, Paul J. Hogan,
Larry Cochran, Marcus M. Lambert, Dennis Nuss*

Monday, March 22, 2010

6:00 PM

Council Chambers, Courthouse

ATTENDANCE

Present: 9 - Carolyn K. Schexnaydre, Terry Authement, Billy Raymond, Sr., Shelley Tastet, Wendy Benedetto, Paul J. Hogan, Lawrence 'Larry' Cochran, Marcus M. Lambert, Dennis Nuss

Also Present: Chief Operations Officer John "Rusty" Walker, Chief Administrative Officer Timmy Vial, Legal Director Leon C. Vial, III, Public Works/Wastewater Director Sam Scholle, Planning & Zoning Director Kimberly Marousek, Finance Director Grant Dussom, Grant Officer Holly Fonseca, Public Information Officer Renee Simpson, Economic Development & Tourism Director Corey Faucheux

CALL TO ORDER

Meeting called to order at 6:03 pm.

PRAYER

*Bishop Otis Kenner
Faith Praise & Deliverance Temple*

PLEDGE

*Bishop Otis Kenner
Faith Praise & Deliverance Temple*

APPROVAL OF MINUTES

A motion was made by Councilmember Tastet, and seconded to approve the minutes from the Regular Meeting of February 8, 2010 and the Regular Meeting of March 1, 2010. The motion carried by the following vote:

Votes: Yea: 9 - Schexnaydre, Authement, Raymond, Tastet, Benedetto, Hogan, Cochran, Lambert, Nuss
Nay: 0

SPECIAL BUSINESS (PROCLAMATIONS, CANVASS RETURNS, ETC.)

2010-0088 (3/22/2010, Authement)

In Recognition: St. Anthony Outreach, Inc. Youth and Family Restoration Center

A motion was made by Councilmember Authement, and seconded to postpone indefinitely File No. 2010-0088. The motion carried by the following vote:

Votes: Yea: 8 - Schexnaydre, Authement, Raymond, Benedetto, Hogan, Cochran, Lambert, Nuss
Nay: 0
Abstain: 1 - Tastet

A motion was made by Councilmember Authement, and seconded to reconsider the vote on File No. 2010-0088. The motion carried by the following vote:

Votes: Yea: 9 - Schexnaydre, Authement, Raymond, Tastet, Benedetto, Hogan, Cochran, Lambert, Nuss
Nay: 0

A motion was made, and seconded that this matter be Postponed Indefinitely. The motion carried by the following vote:

Votes: Yea: 9 - Schexnaydre, Authement, Raymond, Tastet, Benedetto, Hogan, Cochran, Lambert, Nuss
Nay: 0

1

2010-0105 (3/22/2010, Benedetto)

In Recognition: James Cospolich, New Orleans Aviation - Noise Abatement Committee

Read

2

2010-0109 (3/22/2010, St. Pierre)

Proclamation: Child Abuse Prevention Month

Read

REPORTS (FINANCE AND ADMINISTRATIVE ACTIVITIES)

2010-0101 (3/22/2010)

Department of Economic Development & Tourism

Reported

2010-0102 (3/22/2010, St. Pierre)

Parish President Remarks/Report

Parish President St. Pierre absent; in Washington, D.C.

Not Reported

IN ACCORDANCE WITH ARTICLE IV, SECTION B OF THE HOME RULE CHARTER, CHAIRMAN RAYMOND AUTHORIZED THAT THE ORDINANCES, HAVING BEEN PRESENTED FOR INTRODUCTION, DISTRIBUTED TO COUNCIL MEMBERS AND THE PARISH PRESIDENT, AND NOT REJECTED BY TWO-THIRDS OF THE COUNCIL MEMBERS, ARE TO BE PUBLISHED IN SUMMARY FORM AS FOLLOWS IN THE OFFICIAL JOURNAL WITH NOTICE OF PUBLIC HEARING TO BE HELD ON MONDAY, APRIL 5, 2010, 6:00 P.M., COUNCIL CHAMBERS, COURTHOUSE, HAHNVILLE, TO BE CONSIDERED FOR FINAL PASSAGE:

2010-0106 (3/22/2010, St. Pierre, Department of Planning & Zoning)

An ordinance to amend the Zoning Ordinance to change the zoning classification from W-1 and R-1B to C-3 at 10743 Hwy. 90 and 10763 Hwy. 90 and adjacent lots (Tracts A & B), Luling LA as requested by Mary & Neal Clulee.

Publish/Scheduled PH

2010-0107 (3/22/2010, St. Pierre, Department of Planning & Zoning)

An ordinance to amend the Zoning Ordinance to change the zoning classification from C-2 and R-1A to R-1A at 13525 River Road, Luling LA as requested by Don P. Madere.

Publish/Scheduled PH

2010-0108 (3/22/2010, St. Pierre, Department of Finance)

An ordinance to approve and authorize the execution of an Intergovernmental Agreement with the Sunset Drainage District to provide for an operating subsidy for fiscal year 2010 for the operation and maintenance of the District's drainage system in the amount of \$298,218.00.

Publish/Scheduled PH

2010-0112 (3/22/2010, St. Pierre, Department of Finance)

An ordinance to amend the 2010 Consolidated Operating and Capital Budget to add funding for the construction of the Walking Trail at Rathborne Park in the amount of \$468,825.00 comprised of Grant revenue of \$150,000 and a transfer from the General Fund in the amount of \$318,825.00.

Publish/Scheduled PH

2010-0114 (3/22/2010, St. Pierre, Department of Parks and Recreation)

An ordinance to approve and authorize the execution of an Engineering Services Contract with Civil and Environmental Consulting Engineers, LLC, for the design of Phase I of Rathborne Park in Luling.

Publish/Scheduled PH

2010-0115 (3/22/2010, St. Pierre, Department of Economic Development and Tourism)

An ordinance to approve and authorize the execution of a Cooperative Endeavor Agreement with the German Coast Farmers' Market to provide certain services to St. Charles Parish.

Publish/Scheduled PH

- 2010-0116** (3/22/2010, St. Pierre, Department of Emergency Preparedness)
An ordinance to approve and authorize the execution of a Professional Consulting Agreement between Providence Engineering and Environmental Group LLC and St. Charles Parish to render program administrative/management services in the implementation of the FEMA Hazard Mitigation Grant Program #1603c-089-0030, FEMA-1603-DR-LA, Project #0182, Elevation of 16 Structures.
Publish/Scheduled PH
- 2010-0117** (3/22/2010, Hogan, Schexnaydre, Tastet, Benedetto, Cochran, Lambert, Nuss)
An ordinance to amend the Code of Ordinances by adding Section 5-5. Abandoned Vessels to Chapter 5 Boats, Docks and Waterways to address the removal of abandoned vessels in parish waterways.
Publish/Scheduled PH
- 2010-0118** (3/22/2010, St. Pierre, Department of Public Works)
An ordinance to approve and authorize the execution of a contract with Civil Construction Contractors, Inc. for the construction of Parish Project No. P090905, Rathborne Park Walking Trail, with Base Bid, Alternate No. 1, Alternate No. 2, and Alternate No. 3 in the amount of \$557,664.85.
Publish/Scheduled PH
- 2010-0119** (3/22/2010, St. Pierre, Department of Community Services)
An ordinance to approve and authorize the Execution of an Agreement with the St. Charles Parish Department of Community Services and the Department of Education for a Summer Food Service Program from June 07, 2010 through July 15, 2010.
Publish/Scheduled PH
- 2010-0120** (3/22/2010, Hogan)
An ordinance to clarify that Breaux Lane (Des Allemands) is a public street for maintenance purposes only by the Parish of St. Charles.
Publish/Scheduled PH
- 2010-0121** (3/22/2010, St. Pierre, Department of Legal Services)
An ordinance to approve and authorize the execution of an Act of Sale by Madere's Garage, Inc. to St. Charles Parish for a certain parcel of property, located at 15022 River Road in Hahnville.
Publish/Scheduled PH
- 2010-0122** (3/22/2010, St. Pierre, Department of Legal Services)
An ordinance to approve and authorize the execution of an Act of Sale by Margaret G. Conklin, et al, to St. Charles Parish for a certain parcel of property located at 15032 River Road in Hahnville.
Publish/Scheduled PH

ORDINANCES SCHEDULED FOR PUBLIC HEARING (INTRODUCED AT PREVIOUS MEETING)

- 3 **2010-0084** (4/5/2010, St. Pierre, Grants Office)
 An ordinance to approve and authorize the execution of Agreement between Sizeler Thompson Brown Architects - Regional Design Group, LLC, and St. Charles Parish to provide architectural services for the new community center, located at 274 Sugarland Parkway in Luling, in the implementation of the Parish's Hurricane Gustav/Ike Community Development Block Grant (CDBG) Disaster Recovery Program.
Discussion: to accept both revised versions in the Agreement
A motion was made by Councilmember Authement, and seconded that this matter be Amended. The motion carried by the following vote:
Votes: Yea: 9 - Schexnaydre, Authement, Raymond, Tastet, Benedetto, Hogan, Cochran, Lambert, Nuss
 Nay: 0
Reported:
Grants Office Recommended: Approval

Mr. Thomas Brown, Principal/President of Sizeler Thompson Brown Architects, answered questions.
PH Requirements Satisfied
Proposed ordinance failed for lack of a majority by the following vote
Votes: Yea: 3 - Schexnaydre, Authement, Hogan
 Nay: 6 - Raymond, Tastet, Benedetto, Cochran, Lambert, Nuss
- 4 **2010-0086** (3/1/2010, St. Pierre, Department of Public Works)
 An ordinance approving and authorizing the execution of Change Order No. 1(Final) for Parish Project No. P090101, Parish Courthouse Emergency Stand-by Generator to decrease the contract amount by \$47,901.40.
Reported:
Public Works Department Recommended: Approval
PH Requirements Satisfied
Votes: Yea: 9 - Schexnaydre, Authement, Raymond, Tastet, Benedetto, Hogan, Cochran, Lambert, Nuss
 Nay: 0
- 10 **2010-0097** (3/1/2010, St. Pierre, Department of Public Works)
 An ordinance to approve and authorize the execution of a Contract for Engineering Services with EVANS-GRAVES ENGINEERS, INC. for necessary professional engineering services associated with Parish Project No. P100301 Install Control Gates on Culverts at Prescott Pump Station and Temporary Pumps at Walker and Almedia Tidal Control Structures.
Reported:
Public Works Department Recommended: Approval
PH Requirements Satisfied

Votes: Yea: 9 - Schexnaydre, Authement, Raymond, Tastet, Benedetto, Hogan, Cochran, Lambert, Nuss
Nay: 0

PERSONS TO ADDRESS THE COUNCIL

2010-0111 (3/22/2010)

Ms. Gwen Dufrene: Library Milage Renewal

A motion was made by Councilmember Schexnaydre, and seconded to extend Ms. Dufrene's time an additional three minutes. The motion failed by the following vote:

Votes: Yea: 4 - Schexnaydre, Authement, Raymond, Hogan
Nay: 5 - Tastet, Benedetto, Cochran, Lambert, Nuss

Motion Failed

Heard

RESOLUTIONS

34 **2010-0103** (3/22/2010, Schexnaydre, Authement, Raymond, Tastet, Benedetto, Hogan, Cochran, Lambert, Nuss)

A resolution authorizing the issuance of a Special License to Hahnville High School Dugout Club to conduct a Super Bingo.

Reported:

- Councilwoman Schexnaydre Recommended: Approval*
- Councilman Authement Recommended: Approval*
- Councilman Raymond Recommended: Approval*
- Councilman Tastet Recommended: Approval*
- Councilwoman Benedetto Recommended: Approval*
- Councilman Hogan Recommended: Approval*
- Councilman Cochran Recommended: Approval*
- Councilman Lambert Recommended: Approval*
- Councilman Nuss Recommended: Approval*

Votes: Yea: 9 - Schexnaydre, Authement, Raymond, Tastet, Benedetto, Hogan, Cochran, Lambert, Nuss
Nay: 0

35 **2010-0104** (3/22/2010, St. Pierre, Grants Office)

A resolution to approve and authorize the execution of an Agreement between the State of Louisiana Department of Culture, Recreation and Tourism, Office of State Parks, Division of Outdoor Recreation and St. Charles Parish for Federal funding in the amount of \$150,000.00 for Phase I of the Rathborne Park Development, Federal Project No. 22-00910.

Reported:

Grants Office Recommended: Approval

Votes: Yea: 9 - Schexnaydre, Authement, Raymond, Tastet, Benedetto, Hogan, Cochran, Lambert, Nuss
Nay: 0

2010-0113 (3/22/2010, Nuss, Schexnaydre, Authement, Raymond, Tastet, Benedetto, Hogan, Cochran, Lambert)

A resolution strongly requesting the Louisiana Department of Transportation and Development to expedite the repair of the expansion joints missing on the down ramp of I-310 to Highway 90 East and additional locations throughout the Parish.

Amendment: to amend the proposed resolution in the "SUMMARY" and in the "NOW THEREFORE, BE IT RESOLVED Section" to change "... repair of the expansion joints missing on the down ramp of I-310 ..." to read "... repair of the expansion joints and bearing pads missing on the down ramp of I-310 ..."

A motion was made by Councilmember Lambert, and seconded that this matter be Amended. The motion carried by the following vote:

Votes: Yea: 9 - Schexnaydre, Authement, Raymond, Tastet, Benedetto, Hogan, Cochran, Lambert, Nuss
Nay: 0

38

2010-0113 (3/22/2010, Nuss, Schexnaydre, Authement, Raymond, Tastet, Benedetto, Hogan, Cochran, Lambert)

A resolution strongly requesting the Louisiana Department of Transportation and Development to expedite the repair of the expansion joints and bearing pads missing on the down ramp of I-310 to Highway 90 East and additional locations throughout the Parish.

Reported:

- Councilman Nuss Recommended: Approval*
- Councilwoman Schexnaydre Recommended: Approval*
- Councilman Authement Recommended: Approval*
- Councilman Raymond Recommended: Approval*
- Councilman Tastet Recommended: Approval*
- Councilwoman Benedetto Recommended: Approval*
- Councilman Hogan Recommended: Approval*
- Councilman Cochran Recommended: Approval*
- Councilman Lambert Recommended: Approval*

VOTE ON THE PROPOSED RESOLUTION AS AMENDED

Votes: Yea: 9 - Schexnaydre, Authement, Raymond, Tastet, Benedetto, Hogan, Cochran, Lambert, Nuss
Nay: 0

APPOINTMENTS

2010-0070 (2/8/2010)

A resolution appointing a member to the South Central Louisiana Solid Waste District.

Deferred

2010-0073 (2/8/2010)

A resolution to appoint a member to the Library Service District Board of Control.

Nominee:

Councilman Raymond nominated Mr. Ralph Deroche

Nomination(s) Accepted

A motion was made by Councilmember Lambert, and seconded to Close Nomination(s) for this file. The motion carried by the following vote:

Votes: Yea: 9 - Schexnaydre, Authement, Raymond, Tastet, Benedetto, Hogan, Cochran, Lambert, Nuss
Nay: 0

2010-0093 (3/1/2010)

Council Minority Appointment to the South Central Planning and Development Commission.

Deferred

2010-0110 (3/22/2010)

A resolution to appoint a member to the Planning & Zoning Commission as the District VII Representative.

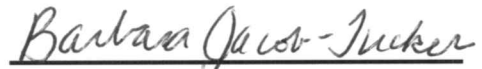
Vacancy Announced

ADJOURNMENT

A motion was made by Councilmember Authement, and seconded to adjourn the meeting at approximately 7:22 pm. The motion carried by the following vote:

Votes: Yea: 9 - Schexnaydre, Authement, Raymond, Tastet, Benedetto, Hogan, Cochran, Lambert, Nuss
Nay: 0

I HEREBY CERTIFY THE FOREGOING TO BE EXACT AND TRUE.

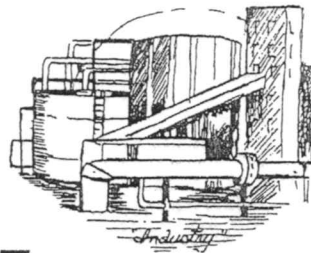
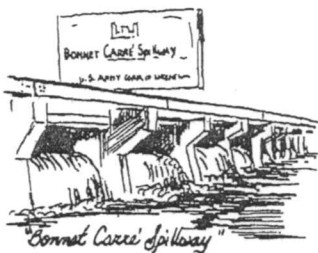
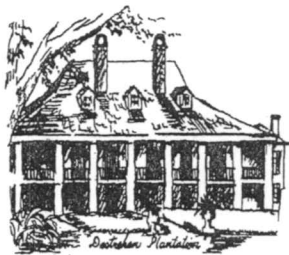


Barbara Jacob-Tucker,
LCMC,CAA,CMA,CPO
Council Secretary

The Parish of St. Charles

March 22, 2010

The St. Charles Parish Council
and the Parish President
Deeply Appreciate
Your Years of Service

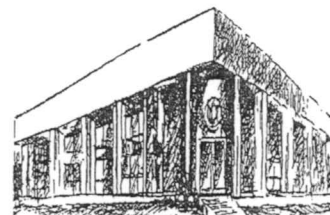


NEW ORLEANS AVIATION BOARD –
NOISE ABATEMENT COMMITTEE

January 18, 1988 – December 31, 2009



JAMES COSPOLICH



"PARISH OF PLENTY"
created in 1807 from the county of the
"German Coast", a parish of
unprecedented economic and social
development, known for its
hospitality, rural living and sporting
opportunities... with the added
distinction of being located
on both sides of the
Mighty Mississippi River.

V.J. ST. PIERRE, JR.
PARISH PRESIDENT

TERRY AUTHEMENT
COUNCILMAN AT LARGE, DIV. B

BILLY RAYMOND, SR.
COUNCILMAN, DISTRICT I

SHELLEY M. FASTET
COUNCILMAN, DISTRICT II

WENDY BENEDETTO
COUNCILWOMAN, DISTRICT III

CAROLYN K. SCHEXNAYDRE
COUNCILWOMAN AT LARGE, DIV. A

PAUL J. HOGAN
COUNCILMAN, DISTRICT IV

LARRY COCHRAN
COUNCILMAN, DISTRICT V

MARCUS M. LAMBERT
COUNCILMAN, DISTRICT VI

DENNIS NUSS
COUNCILMAN, DISTRICT VII

PROCLAMATION

WHEREAS, *the community cares deeply about the prevention of child abuse, and the majority reports that child abuse is a very important moral issue to them; and,*

WHEREAS, *preventing child abuse and neglect is a community problem that depends on involvement among people throughout our community; and,*

WHEREAS, *child abuse and neglect not only directly harms children, but also increases the likelihood of long-term physical and mental health problems, alcohol and substance abuse, continued family violence, and criminal behavior; and,*

WHEREAS, *the effects of child abuse are felt by whole communities and need to be addressed by the entire community; and,*

WHEREAS, *the majority of child abuse cases stem from situations and conditions that are preventable in an engaged and supportive community; and,*

WHEREAS, *child abuse and neglect can be reduced by making sure each family has the support they need in raising their children in a safe, nurturing environment; and,*

WHEREAS, *effective child abuse prevention programs succeed because of partnerships created among social service agencies, schools, faith communities, civic organizations, law enforcement agencies, and the business community; and,*

WHEREAS, *all citizens should become more aware of the negative effects of child abuse and its prevention within the community and become involved in supporting parents to raise their children in a safe, nurturing environment.*

NOW, THEREFORE, BE IT RESOLVED, THAT WE, THE MEMBERS OF THE ST. CHARLES PARISH COUNCIL AND THE PARISH PRESIDENT, DO HEREBY PROCLAIM APRIL 2010 AS

CHILD ABUSE PREVENTION MONTH

IN ST. CHARLES PARISH AND CALL UPON ALL CITIZENS, COMMUNITY AGENCIES, FAITH GROUPS, MEDICAL FACILITIES, AND BUSINESSES TO INCREASE THEIR PARTICIPATION IN OUR EFFORTS TO SUPPORT FAMILIES, THEREBY PREVENTING CHILD ABUSE AND STRENGTHENING THE COMMUNITIES IN WHICH WE LIVE.

ABSENT

V.J. ST. PIERRE, JR.
PARISH PRESIDENT
s/TERRY AUTHEMENT

TERRY AUTHEMENT
COUNCILMAN AT LARGE, DIV. B
s/BILLY RAYMOND, SR.

BILLY RAYMOND, SR.
COUNCILMAN, DISTRICT I
s/SHELLEY M. TASTET

SHELLEY M. TASTET
COUNCILMAN, DISTRICT II
s/WENDY BENEDETTO

WENDY BENEDETTO
COUNCILWOMAN, DISTRICT III

s/CAROLYN K. SCHEXNAYDRE

CAROLYN K. SCHEXNAYDRE
COUNCILWOMAN AT LARGE, DIV. A
s/PAUL J. HOGAN, PE

PAUL J. HOGAN, PE
COUNCILMAN, DISTRICT IV
s/LARRY COCHRAN

LARRY COCHRAN
COUNCILMAN, DISTRICT V
s/MARCUS M. LAMBERT

MARCUS M. LAMBERT
COUNCILMAN, DISTRICT VI
s/DENNIS NUSS

DENNIS NUSS
COUNCILMAN, DISTRICT VII

2010-0084

**INTRODUCED BY: V.J. ST. PIERRE, JR., PARISH PRESIDENT
(GRANTS OFFICE)**

An ordinance to approve and authorize the execution of Agreement between Sizeler Thompson Brown Architects – Regional Design Group, LLC, and St. Charles Parish to provide architectural services for the new community center, located at 274 Sugarland Parkway in Luling, in the implementation of the Parish’s Hurricane Gustav/Ike Community Development Block Grant (CDBG) Disaster Recovery Program.

WHEREAS, the Parish intends to implement its Hurricane Gustav/Ike CDBG Disaster Recovery Program, which involves the planning, programming, application, award, and implementation of one or more disaster recovery projects in accordance with all local, state, and federal regulations governing the expenditure of the Parish’s \$4,809,266 in CDBG Disaster Recovery funding; and,

WHEREAS, the Parish desires to engage Sizeler Thompson Brown Architects – Regional Design Group, LLC to provide architectural services for the new community center, located at 274 Sugarland Parkway in Luling, in the implementation of the Parish’s Hurricane Gustav/Ike CDBG Disaster Recovery Program; and,

WHEREAS, the cost of said services is reimbursable with the CDBG Disaster Recovery funding; and,

WHEREAS, it is the desire of the Parish and Sizeler Thompson Brown Architects – Regional Design Group, LLC to enter into an agreement for said services.

THE ST. CHARLES PARISH COUNCIL HEREBY ORDAINS:

SECTION I. That the Agreement between Sizeler Thompson Brown Architects – Regional Design Group, LLC and St. Charles Parish is hereby approved.

SECTION II. That the Parish President is hereby authorized to execute said Agreement on behalf of St. Charles Parish.

YEAS: SCHEXNAYDRE, AUTHEMENT, HOGAN

NAYS: RAYMOND, TASTET, BENEDETTO, COCHRAN, LAMBERT, NUSS

ABSENT: NONE

PROPOSED ORDINANCE FAILED FOR LACK OF A FAVORABLE MAJORITY ON MARCH 22, 2010.

2010-0086

INTRODUCED BY: V.J. ST. PIERRE, JR., PARISH PRESIDENT
(DEPARTMENT OF PUBLIC WORKS)

ORDINANCE NO. 10-3-4

An ordinance approving and authorizing the execution of Change Order No. 1(Final) for Parish Project No. P090101, Parish Courthouse Emergency Stand-by Generator to decrease the contract amount by \$47,901.40.

WHEREAS, Ordinance No. 09-6-7, adopted June 15, 2009, by the St. Charles Parish Council, approved and authorized the execution of a contract with Fisk Electric Company for Project No. P090101 Parish Courthouse Emergency Stand-by Generator in the amount of \$992,200.00; and,

WHEREAS, the decrease in contract amount of \$47,901.40 resulted from the reduced scope of work under the Relocation of Infrastructure line item; and,

WHEREAS, It is necessary to finally amend the contract reducing one item resulting in a decrease in the contract amount by \$47,901.40.

THE ST. CHARLES PARISH COUNCIL HEREBY ORDAINS,

SECTION I. That Change Order No. 1(Final) for Parish Project No. P090101 Parish Courthouse Emergency Stand-by Generator to decrease the contract amount by \$47,901.40 is hereby approved.

SECTION II. That the Parish President is hereby authorized to execute said Change Order on behalf of St. Charles Parish.

The foregoing ordinance having been submitted to a vote, the vote thereon was as follows:

YEAS: SCHEXNAYDRE, AUTHEMENT, RAYMOND, TASTET, BENEDETTO, HOGAN, COCHRAN, LAMBERT, NUSS

NAYS: NONE

ABSENT: NONE

And the ordinance was declared adopted this 22nd day of March, 2010, to become effective five (5) days after publication in the Official Journal.

CHAIRMAN: Billy Raymond, Sr.
SECRETARY: Barbara Gawa Jucker
DLVD/PARISH PRESIDENT: March 23, 2010
APPROVED: DISAPPROVED:
PARISH PRESIDENT: W. J. St. Pierre
RETD/SECRETARY: March 24, 2010
AT: 10:25 a.m. RECD BY: Bjt

CHANGE ORDER

No. 1 (Final)

DATE OF ISSUANCE February 11, 2010

EFFECTIVE DATE _____

| | | |
|----------------------|--|---------------------------------|
| OWNER | St. Charles Parish | |
| CONTRACTOR | Fisk Electric Company | |
| Contract: | Parish Courthouse Emergency Stand-by Generator | |
| Project: | Parish Courthouse Emergency Stand-by Generator | |
| OWNER's Contract No. | P090101 | ENGINEER's Contract No. 0803702 |
| ENGINEER | Huseman & Associates | |

You are directed to make the following changes in the Contract Documents:

Description: See attached example on how to fill in this information

1. Revise the Following Work Item Quantities:
 - a. Contract Item #11: Relocation of Infrastructure
The Lump Sum Costs for this line item will change from \$50,000.00 to \$2,098.60. (-\$47,901.40)
- Total of Change in Work Items Quantity = -\$47,901.40

Reason for Change Order: List a reason for each Line Item listed above.

1. Revise Work Item Quantities
 - a. During the excavation of the underground electrical ductbank, an unexpected curvature was discovered which required an extension of the new handhole to allow clearance for the concrete saw to cut the conduits. Additional wire framing and concrete was required to increase the handhole nose from the original 2' to 4'. The steel cover was also extended.

Attachments:

1. Fisk Cost Estimate dated 9/21/09
2. Field Order No 1 dated 9/22/09
3. Change Order Detail

00806-1

6

| CHANGE IN CONTRACT PRICE: |
|---|
| Original Contract Price \$992,200.00 |
| Net Increase (Decrease) from previous Change Orders No. ___ to ___: \$0 |
| Contract Price prior to this Change Order: \$992,200.00 |
| Net increase (decrease) of this Change Order: - \$47,901.40 _____ |
| Contract Price with all approved Change Orders: \$944,298.60 |

| CHANGE IN CONTRACT TIMES: |
|--|
| Original Contract Times: -Substantial Completion: _____ -Ready for final payment: _____ (days or dates) |
| Net change from previous Change Orders No. ___ to No. ___: -Substantial Completion: _____ -Ready for final payment: _____ (days) |
| Contract Times prior to this Change Order: -Substantial Completion: _____ -Ready for final payment: _____ (days or dates) |
| Net increase (decrease) this Change Order: -Substantial Completion: _____ -Ready for final payment: _____ (days) |
| Contract Times with all approved Change Orders: -Substantial Completion: _____ -Ready for final payment: _____ (days or dates) |

RECOMMENDED:

By: Ashley Cooper
ENGINEER (Authorized Signature)

APPROVED:

By: W. E. H.
OWNER (Authorized Signature)

ACCEPTED:

By: Bob Williams
CONTRACTOR (Authorized Signature)

Date: 2/11/10

Date: 3-24-10

Date: 2-11-10

EJCDC 1910-8-B (1996 Edition)

Prepared by the Engineers Joint Contract Documents Committee and endorsed by The Associated General Contractors of America and the Construction Specifications Institute.



September 21, 2009

Ashley Cooper
Project Manager
Huseman & Associates
3925 N. I-10 Service Road
Metairie, La. 70002
Fax (504) 456-3122 Phone (504) 456-3119

Re: CO# 2; To Add Two Additional Feet to The New Electrical Handhole Nose

Dear Ashley,

Please review the scope and pricing below:

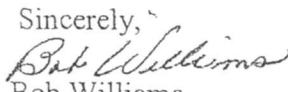
SCOPE: Our Concrete subcontractor will add additional wire framing, concrete and extend the steel cover to increase the handhole nose from the original 2' to 4' so that the handhole will incorporate the dog-leg of the duct bank secondary feeders that was discovered during the excavation of the duct bank for framing of the handhole.

Sub Cost : \$ 1,825.00
Markup 15%: \$ 273.80
Total Cost: \$ 2,098.60

We are dependent upon a quick acceptance of this change order as scheduling is critical in order for us to remain on schedule without incurring additional costs. Because changes which effect either the time or sequence of construction done prior to or concurrent with the electrical work also effect the time and completion of the electrical work, we hereby reserve our right to request an equitable adjustment for rescheduling, delays, disruption, acceleration, and/or impact in the event this modification changes the construction sequence and/or time of completion.

If we may be of further assistance please advise.

Office Phone # 504-889-0811, Fax # 504-833-4045, email bwilliams@FiskCorp.com

Sincerely,

Bob Williams
Project Manager

Approved by X _____ Date _____

File: St Charles Parish Eng Gen CO# 2

FIELD ORDER

PROJECT: Parish Courthouse
Emergency Stand-by Generator

FIELD ORDER NO.: 1

DATE: September 22, 2009

CONTRACT:

OWNER: St. Charles Parish

OWNER'S PROJECT NO.: P090101

TO: Fisk Electric
181 James Drive West
St. Rose, Louisiana 70087

CONTRACT DATE: June 16th, 2009

This Field Order is issued to interpret/clarify the Contract Documents, order minor changes in the work and/or memorialize trade-off agreements. Both parties hereby agree that the work described by this Field Order is to be accomplished without change in Contract Sum, Contract Time, and/or claims for other costs.

DESCRIPTION: (Here insert a written description of the interpretation, change or agreement.)

To add two (2) additional feet to the New Electrical Handhole Nose.

The concrete subcontractor will add additional wire framing, concrete and extend the steel cover to increase the handhole nose from the original 2' to 4' so that the handhole will incorporate the dog-leg of the duct bank secondary feeders that was discovered during the excavation of the duct bank for framing of the handhole.

Sub Cost: \$1,825.00
Markup 15%: \$ 273.00
\$2,098.60

FIELD ENGINEER: Ashley Cooper

CONTRACTOR: Fisk Electric

BY: *Ashley Cooper*

BY: *Bob Williams*

CHANGE ORDER DETAIL

OWNER: ST. CHARLES PARISH
CONTRACTOR: FISK ELECTRIC COMPANY
CONTRACT: PARISH COURTHOUSE EMERGENCY STAND-BY GENERATOR
OWNER PROJECT #: P090101
ENGINEER: HUSEMAN & ASSOCIATES

| Item # | Item | Unit | Qty | Unit Price | Original Contract Price | Change Order #1/Final | Revised Contract Price |
|--------------|---|------|-----|------------|-------------------------|-----------------------|------------------------|
| 1 | Moving and placing of Emergency Generator | LS | 1 | 9,810.00 | 9,810.00 | - | 9,810.00 |
| 2 | Electrical Handhole | LS | 1 | 44,690.00 | 44,690.00 | - | 44,690.00 |
| 3 | Emergency Generator | LS | 1 | 506,594.00 | 506,594.00 | - | 506,594.00 |
| 4 | Feeders | LS | 1 | 113,142.00 | 113,142.00 | - | 113,142.00 |
| 5 | Demolition | LS | 1 | 96,381.00 | 96,381.00 | - | 96,381.00 |
| 6 | Switchgear | LS | 1 | 31,500.00 | 31,500.00 | - | 31,500.00 |
| 7 | Sitework | LS | 1 | 11,208.00 | 11,208.00 | - | 11,208.00 |
| 8 | Mobilization | LS | 1 | 81,831.00 | 81,831.00 | - | 81,831.00 |
| 9 | Foundation | LS | 1 | 38,324.00 | 38,324.00 | - | 38,324.00 |
| 10 | Temporary Generator | LS | 1 | 8,720.00 | 8,720.00 | - | 8,720.00 |
| 11 | Relocation of Infrastructure | LS | 1 | 50,000.00 | 50,000.00 | (47,901.40) | 2,098.60 |
| Total | | | | | 992,200.00 | (47,901.40) | 944,298.60 |

2010-0097

INTRODUCED BY: V.J. ST. PIERRE, JR., PARISH PRESIDENT
(DEPARTMENT OF PUBLIC WORKS)

ORDINANCE NO. 10-3-5

An ordinance to approve and authorize the execution of a Contract for Engineering Services with EVANS-GRAVES ENGINEERS, INC. for necessary professional engineering services associated with Parish Project No. P100301 Install Control Gates on Culverts at Prescott Pump Station and Temporary Pumps at Walker and Almedia Tidal Control Structures.

WHEREAS, the St. Charles Parish Council desires to have the following described project undertaken:

PROJECT DESCRIPTION:

Engineering services for Parish Project No. P100301 Install Control Gates on Culverts at Prescott Pump Station and Temporary Pumps at Walker and Almedia Tidal Control Structures. The service will include but will not be limited to serving as Owner's professional engineering representative for the Project, providing professional engineering consultation and advice, and furnishing customary civil, geotechnical, structural, mechanical, electrical, instrumentation and control engineering services and construction engineering and inspection; and,

WHEREAS, this project will improve flood control in two areas of the East Bank of the parish, tidal flow under Highway 61 near the Prescott Pump Station and at the Walker and Almedia tidal gates on the East Bank Levee.

THE ST. CHARLES PARISH COUNCIL HEREBY ORDAINS:

SECTION I. That the contract for Engineering Services between EVANS-GRAVES ENGINEERS, INC. and the Parish of St. Charles is hereby approved.

SECTION II. That the Parish President is hereby authorized to execute said contract on behalf of the Parish of St. Charles.

The foregoing ordinance having been submitted to a vote, the vote thereon was as follows:

YEAS: SCHEXNAYDRE, AUTHEMENT, RAYMOND, TASTET, BENEDETTO, HOGAN, COCHRAN, LAMBERT, NUSS
NAYS: NONE
ABSENT: NONE

And the ordinance was declared adopted this 22nd day of March, 2010 to become effective five (5) days after publication in the Official Journal.

CHAIRMAN: Billy Raymond, Sr.

SECRETARY: Barbara J. Sucker

DLVD/PARISH PRESIDENT: March 23, 2010

APPROVED: DISAPPROVED:

PARISH PRESIDENT: W. St. Pierre

RETD/SECRETARY: March 24, 2010

AT: 10:25 a.m. RECD BY: BGT

SMALL PROJECT
CONTRACT FOR ENGINEERING SERVICES

THIS AGREEMENT made and effective as of the 24th day of March, 2010, by and between ST. CHARLES PARISH acting herein by and through its President, who is duly authorized to act on behalf of said Parish, hereinafter called the Owner, and Evans-Graves, Inc. One Galleria Blvd., Suite 1520, Metairie, La. 70001, a corporation acting herein by and through its Contracting Officer, hereinafter called Engineer. Whereas the Owner desires to employ a professional consulting engineering firm to perform engineering services for the P100301 Install Control Gates on Culverts at Prescott Pump Station and Temporary Pumps at Walker and Almedia Tidal Control Structures project as described in Ordinance No. 10-3-5 which is attached hereto and made a part hereof.

1.0 GENERAL

The Owner agrees to employ the Engineer, and the Engineer agrees to perform professional services required for the project described above. Engineering will conform to the requirements of the Owner and to the standards of the agencies participating with the Owner in the Project. The Engineer will coordinate all work between the Owner and all participating agencies and regulating agencies, if needed. Written authorization to begin Conceptual, Preliminary, and Design phases of the project will be given to the Engineer by the owner. The Owner may terminate the Contract by written notification and without cause per Section 7.0 during any phase of the project.

2.0 CHARACTER AND EXTENT OF BASIC SERVICES OF THE ENGINEER

2.1 General

2.1.1 Engineer shall provide for Owner professional engineering services in all phases of the Project to which this Agreement applies and as hereinafter provided to properly plan and execute the work on the project(s) assigned to the Engineer. These services will include but will not be limited to serving as Owner's professional engineering representative for the Project, providing professional engineering consultation and advice, and furnishing customary civil, surveying, geotechnical, structural, mechanical, electrical, instrumentation and control engineering services and construction engineering and inspection.

2.1.2 In general, the Project consists of the Design and Construction Management of the following major elements:

A. Design and install control gates on culverts a under Highway 61 and adjacent to Prescott Pump Station for tidal flow control.

- Issue two sets of 90% plans and specs(SCP standard document) for SCP review
- Issue two sets of stamped 100% P&S
- Issue P&S documents to bidders
- Pre bid conference, Bid package reviews, tabulation, and recommend apparent low bidder
- Construction Administration
 - Pre construction conference
 - Review/Approve submittals
 - Prepare applications for payments
 - Prepare work directives, change orders, and final change order
 - Final inspection and substantial completion document
 - Assemble shop drawings and O&M manuals
 - Technical assistance on warranty items
- SCP will supply our own resident inspector for this part.

B. Design, acquire permits, and install temporary pumps at the Walker and Almedia Tidal Control structures at the East Bank Levee.

- Issue two sets of 90% drawings for SCP review
- Issue two sets of stamped 100% drawings
- Submit and acquire necessary permits.
- Construction Administration

- Pre construction conference
 - Review/Approve submittals
 - Prepare applications for payments
 - Prepare work directives, change orders, and final change order
 - Final inspection and substantial completion document
 - Assemble shop drawings and O&M manuals
 - Technical assistance on warranty items
 - SCP will supply our own resident inspector for this part.
- 2.1.3 Services provided by the Engineer shall be performed in accordance with generally accepted professional engineering practice at the time and the place where the services are rendered.
- 2.1.4 Engineer shall obtain from Owner authorization to proceed in writing for each phase of the Project.
- 2.1.5 Engineer shall provide minutes of all meetings with St. Charles Parish to include but not limited to meetings regarding any phase of the Project, Pre-Bid Conferences, Progress Meetings, Technical review Committee Meetings, etc.
- 2.1.6 N/A Conceptual Design Report Phase(mark with X if required or N/A if not required)
- 2.1.7 Conducting a Pre-Design Meeting Workshop with the Owner.
- 2.1.8 Advising the Owner as to the necessity of providing or obtaining from others additional data or services. These additional services may include photogrammetry, reconnaissance surveys, property surveys, topographical surveys, geotechnical investigations and consultations, compilation of hydrological data, materials engineering, and environmental assessments and impact statements.
- 2.1.9 Identifying and analyzing requirements of governmental authorities having jurisdiction to approve the design of the Project, and participating in consultations with such authorities.
- 2.1.10 Preparing a comprehensive Conceptual Design Report presenting selected solutions to the Owner with the Engineer's findings and recommendations. The Report will contain as a minimum:(mark with X if required or N/A if not required)
- N/A Discussion of project background and need.
 - Schematic layouts, sketches, or photographs.
 - N/A Conceptual design criteria with appropriate exhibits to indicate clearly the considerations involved.
 - N/A Any special material specifications including major equipment specifications.
 - N/A A preliminary cost estimate for each alternative.
 - N/A Engineer's conceptual opinion of probable costs for the selected alternative.
 - N/A Discussion as to what permits are needed, time to acquire approvals, and potential adjacent land owner authorizations/servitudes that need addressing.
 - N/A Discussion of the type of additional services, mentioned in 2.2.3, that will be needed.
- 2.1.11 Meeting with the Owner and presenting findings of the Conceptual Design Report.
- 2.1.12 The Conceptual Design Report and Engineer's documentation and opinion of costs, along with the following documents and files, shall be delivered to Owner within 30 calendar days, or as otherwise stated in the written authorization from Owner to Engineer to proceed with Conceptual Design.
- Two (2) copies of the report for review.
 - Once the report has been finalized, submit two (2) copies of the revised report plus one (1) electronic file copy in PDF format.
 - All files will be titled so as to distinguish between conceptual, preliminary, and final design stages.

2.2 Design Memorandum Phase

- 2.2.1 The Design Memorandum or Preliminary Engineering Design Report will summarize the process and design criteria established in Conceptual Design and initiate acquiring necessary permits and servitudes. The document will be used in the development of final design plans and specifications and will serve as a guide by designers and other interested parties.
- 2.2.2 The Design Memorandum will consist minimally of the following sections: (mark with X if required or N/A if not required)
- N/A Site Development – project site plan that includes anticipated construction area required and any known servitudes or property owners.
 - N/A Hydraulics - if necessary
 - N/A Treatment Processes - if necessary
 - N/A Design Criteria including a listing of all standard specifications to be used by type (concrete, piling, steel electrical, roads/foundations, etc)
 - N/A Preliminary Drawings – 11x17 minimum size
 - N/A The following indexes: Drawings, Division 00 St Charles Parish Bidding/Contract Documents showing revision number, Division 01 St Charles Parish General Specifications showing revision number, and Division 02-16 material and equipment specifications, to be used in final design.
 - N/A Engineer’s preliminary opinion of probable costs.
 - N/A Summary of estimated quantities – initial bid schedule
 - N/A Instrumentation & Control Philosophy
 - N/A Power Requirements
 - N/A Additional data that will be needed, such as topographical, geotechnical, and project surveying.
- 2.2.3 The engineer will deliver to owner within 15 days following Design Memorandum authorization, a detailed description (including specifications) and estimated cost of required additional services such as site survey, topographical survey, or geotechnical investigation. In addition, the engineer will also deliver estimated time and cost to apply for regulatory permits from local, state or federal authorities. The owner will have the option to utilize their own surveyor, land/servitude acquisition consultant, permit consultant, or geotech firm.
- 2.2.4 Meeting with the Owner and presenting findings of the Preliminary Design Report.
- 2.2.5 The Preliminary Engineering Design Report and Engineer’s documentation and opinion of costs, along with the following documents and files, shall be delivered to the Owner within 30 days or as otherwise stated in the written authorization from Owner to Engineer to proceed with Design Memorandum.
- Two (2) copies of the report for review.
 - Once the report has been finalized, submit two (2) copies of the revised report plus one (1) electronic file copy in PDF format.
 - Two (2) copies of the drawings (11x17 minimum).
 - Once the drawing review is complete, submit one copy of the revised drawings.
 - All files will be titled so as to distinguish between conceptual, preliminary, and final design stages.

2.3 Design Phase

- 2.3.1 Prepare for incorporation into Contract Documents final drawings based on the accepted preliminary design documents to show the scope, extent, and character of the work to be furnished and performed by Contract (hereinafter called “Drawings”) and Specifications which will be prepared in conformance with the sixteen division format of the Construction Specifications Institute.

- 2.3.2 Preparing and furnishing to the Owner a revised opinion of probable total project costs based on the final Drawings and Specifications.
- 2.3.3 Preparing the contract/bid document that includes St. Charles Parish's Standardized Construction Contract files and the added engineer's specifications for review and approval by the Owner (and the Owner's legal and other advisors).
- 2.3.4 Meeting with the Owner and presenting the final design.
- 2.3.5 The Final Design Services shall be completed and Engineer's documentation and opinion of costs, along with the following documents and files, shall be delivered to the Owner within 30 days or as otherwise stated in the written authorization from Owner to Engineer to proceed with Design Phase.
 - Two (2) copies of the contract/bid document for review.
 - Once the contract/bid document has been finalized, submit two (2) stamped copies of the revised document plus one (1) electronic file copy in PDF format.
 - Two (2) copies of the drawings – D Size for review.
 - Once the drawing review is complete, submit two stamped copies of the revised drawings plus one (1) electronic file copy of each drawing in AutoCADD format (release 2000 or later) and in PDF format.
 - All files will be titled so as to distinguish between conceptual, preliminary, and final design stages.

2.4 Bidding Phase

- 2.4.1 Produce Contract Documents (specifications and 22" by 34" drawings) for each Project for bidding purposes.
- 2.4.2 Assist Owner as necessary in advertising for and obtaining bids for construction, materials, equipment and services; and maintain a record of prospective bidders to whom Bidding Documents have been issued, attend Pre-Bid Conferences and receive and process fees for Bidding Documents. Distribute Bidding Documents to potential bidders.
- 2.4.3 Issue addenda as appropriate to interpret, clarify or expand the Bidding Documents.
- 2.4.4 Consult with and advise Owner as to the acceptability of subcontractors, suppliers and other persons and organizations proposed by the prime contractor (herein called "Contractor") for those portions of the work as to which such acceptability is required by the Bidding Documents.
- 2.4.5 Consult with Owner and confirm in writing the acceptability of substitute materials and equipment proposed by Contractor when substitution prior to the award is required by the Bidding Documents.
- 2.4.6 Attend the Bid Opening, prepare Bid Tabulation Sheets and assist Owner in evaluating bids or proposals and recommend, in writing, contract awarding. In addition, Engineer shall assemble contract documents as specified in Exhibit A on page 19 attached hereto and made a part hereof, for presentation and execution.

2.5 Construction Phase

During the Construction Phase

- 2.5.1 General Administration of Construction Contract. Engineer shall consult with and advise Owner and act as Owner's representative as provided in Articles 1 through 17, inclusive, of the Standard General Conditions of the Construction Contract of the Engineer's Joint Contract Documents Committee. The extent and limitations of the duties, responsibilities and authority of Engineer as assigned in said Standard General Conditions shall not be modified, except as Engineer may otherwise agree in writing. All of Owner's instructions to Contractor will be issued through Engineer who will have authority to act on behalf of Owner to the extent provided in said Standard General Conditions except as otherwise provided in writing.

- 2.5.2 Visits to Site and Observation of Construction. In connection with observations of the work of Contractor while it is in progress.
- 2.5.2.1 Engineer shall make visits to the site once per month minimum, or more frequent visits as deemed necessary by Owner and/or progress of work during the construction periods to observe as an experienced and qualified design professional the progress and quality of the various aspects of Contractor's work. Based on information obtained during such visits and on such observations, Engineer shall endeavor to determine in general if such work is proceeding in accordance with the Contract Documents and Engineer shall keep Owner informed of the progress of the work.
- 2.5.2.2 The purpose of Engineer's visits to (and representation by Resident Project Representative if utilized) the site will be to enable Engineer to better carry out the duties and responsibilities assigned to and undertaken by Engineer during the Construction Phase, and, in addition, by exercise of Engineer's efforts as an experienced and qualified design professional, to provide for Owner a greater degree of confidence that the completed work of Contractor will conform generally to the Contract Documents and that the integrity of the design concept as reflected in the Contract Documents has been implemented and preserved by Contractor. On the other hand, Engineer shall not, during such visits or as a result of such observations of Contractor's work in progress, supervise, direct or have control over Contractor's work nor shall Engineer have authority over or responsibility for the means, methods, techniques, sequences or procedures of construction selected by Contractor, for safety precautions and programs incident to the work of Contractor or for any failure of Contractor to comply with laws, rules, regulations, ordinances, codes or orders applicable to Contractor furnishing and performing their work except as provided in 2.6.3. Accordingly, Engineer can neither guarantee the performance of the construction contracts by Contractor nor assume responsibility for Contractor's failure to furnish and perform their work in accordance with the Contract Documents.
- 2.5.3 Defective Work. During such visits and on the basis of such observations, Engineer may disapprove of or reject Contractor's work while it is in progress if Engineer believes that such work will not produce a completed Project that conforms generally to the Contract Documents or that it will prejudice the integrity of the design concept of the Project as reflected in the Contract Documents.
- 2.5.4 Interpretations and Clarifications. Engineer shall issue necessary interpretations and clarifications of the Contract Documents.
- 2.5.5 Shop Drawings. Engineer shall review and approve (or take other appropriate action in respect of) Shop Drawings (as that term is defined in the aforesaid Standard General Conditions), samples and other data which Contractor is required to submit, but only for conformance with the design concept of the Project and compliance with the information given in the Contract Documents. Such reviews and approvals or other action shall not extend to means, methods, techniques, sequences or procedures of construction or to safety precautions and programs incident thereto except as provided in 2.6.3.
- 2.5.6 Substitutes. Engineer shall evaluate and determine the acceptability of substitute materials and equipment proposed by Contractor and make a recommendation to Owner for his approval.

- 2.5.7 Inspections and Tests. Engineer shall have authority, as Owner's representative, to require special inspection or testing of the work, and shall receive and review all certificates of inspections, testing and approvals required by laws, rules, regulations, ordinances, codes, orders or the Contract Documents (but only to determine generally that their content complies with the requirements of, and the results certified indicate compliance with, the Contract Documents).
- 2.5.8 Dispute between Owner and Contractor. Engineer shall act as initial interpreter of the requirements of the Contract Documents and judge of the acceptability of the work thereunder and make recommendations on all claims of Owner and Contractor relating to the acceptability of the work or the interpretation of the requirements of the Contract Documents pertaining to the execution and progress of the work.
- 2.5.9 Applications for Payment. Based on Engineer's on-site observations as an experienced and qualified design professional, on information provided by the Resident Project Representative and on review of applications for payment and the accompanying data and schedules:
- 2.5.9.1 Engineer shall determine the amounts owed to Contractor and recommend in writing payments to Contractor in such amounts. Such recommendations of payment will constitute a representation to Owner based on such observations and review, that the work has progressed to the point indicated, and that, to the best of Engineer's knowledge, information and belief, the quality of such work is generally in accordance with the Contract Documents (subject to an evaluation of such work as a functioning whole prior to or upon Substantial Completion, to the results of any subsequent tests called for in the Contract Documents and to any other qualifications stated in the recommendation). In the case of unit price work, Engineer's recommendations of payment will include final determination of quantities and classifications of such work (subject to any subsequent adjustments allowed by the Contract Documents).
- 2.5.9.2 By recommending any payment Engineer will not thereby be deemed to have represented that exhaustive, continuous or detailed reviews or examinations have been made by Engineer to check the quality or quantity of Contractor's work as it is furnished and performed beyond the responsibilities specifically assigned to Engineer in this Agreement and the Contract Documents. Engineer's review of Contractor's work for the purposes of recommending payments will not impose on Engineer responsibility to supervise, direct or control such work or for the means, methods, techniques, sequences, or procedures of construction or safety precautions or programs incident thereto or Contractor compliance with laws, rules, regulations, ordinances, codes or orders applicable to their furnishing and performing the work. It will also not impose responsibility on Engineer to make any examination to ascertain how or for what purposes any Contractor has used the moneys paid on account of the Contract Price, or to determine that title to any of the work, materials or equipment has passed to Owner free and clear of any lien, claims, security interests or encumbrances, or that there may not be other matters at issue between Owner and Contractor that might affect the amount that should be paid except as provided in, but not limited to paragraph 2.6.3.
- 2.5.10 Construction Closeout Document. Engineer shall receive and review maintenance and operating instructions, tests and approvals which

are to be assembled by Contractor in accordance with the Contract Documents (but such review will only be to determine that their content complies with the requirements of, and in the case of certificates of inspection, tests and approvals the results certified indicate compliance with, the Contract Documents); and shall transmit them to Owner with written comments.

- 2.5.11 Inspection. Engineer shall conduct an inspection to determine if the work is substantially complete and a final inspection to determine if the completed work is acceptable. If the completed work is acceptable, the Engineer shall recommend in writing, a Notice of Substantial Completion to the Owner and the Contractor that the work is acceptable (subject to any conditions therein expressed).
- 2.5.12 Pre-Construction Conference. Engineer shall assist Owner in conducting a Pre-Construction Conference with Contractor for the project to discuss construction-related matters. Engineer will supply two stamped copies of the Construction Drawings incorporating addenda items generated during the bid process plus one(1) electronic file copy of each drawing in AutoCADD format(release 2000 or later) and in PDF format titled to reflect "Construction Drawings"
- 2.5.13 Owner shall select independent material testing labs. Engineer shall review testing results and based on these results, recommend to Owner the acceptability of material provided by the Contractor and used in the Project.
- 2.5.14 Limitation of Responsibilities. Engineer shall not be responsible for the acts or omissions of any Contractor, or of any subcontractor or supplier, or any of the Contractor's or Sub-Contractor's or supplier's agents or employees or any other persons (except Engineer's own employees and agents) at the site or otherwise furnishing or performing any of the Contractor's work; however, nothing contained in paragraphs 2.6.1 through 2.6.12 inclusive, shall be construed to release Engineer from liability for failure to properly perform duties and responsibilities assumed by Engineer in the Contract Documents, inclusive of but not limited to 2.6.3.
- 2.5.15 Work Directive Changes and Change Orders. To be provided as appropriate to construct the project and in accordance with State and Local Laws.

2.6 Close-out and Operational Phase

During this Phase, Engineer shall:

- 2.6.1 Provide start-up services for the new facility.
- 2.6.2 Prepare training materials and provide N/A hours of training for Owner's staff to operate and maintain the new facility. The program consists of classroom training and hands-on training using the installed equipment.
- 2.6.3 Assemble 3 complete sets of equipment manufacturer's operation and maintenance manuals in proper order for Owner's future reference.
- 2.6.4 Assemble 3 complete sets of approved shop drawings in proper order for Owner's future reference.
- 2.6.5 Provide technical consultation and assistance in correcting warranty items.
- 2.6.6 Provide assistance in connection with the refining and adjusting of new equipment or system.
- 2.6.7 Prepare a final set of stamped project drawings reflecting "as built" along with one (1) electronic file copy of these drawings in AutoCADD format (release 2000 or later) and in PDF format titled to reflect "as built".
- 2.6.8 In company with Owner, visit the Project to observe any apparent defects in the completed construction, assist Owner in consultations and discussions with Contractor concerning correction of such deficiencies, and make recommendations as to replacement or correction of defective work.

2.6.9 Engineer shall have 45 days from Contractor's Substantial Completion date to complete requirements of Contract sections 2.7.4 and 2.7.7.

2.7 Resident Engineer and Inspection

2.7.1 Engineer shall furnish, if requested, a Resident Project Representative (RPR), assistants and other field staff to assist Engineer in observing performance of the work of Contractor. The RPR(s), and the level of support supplied, shall be subject to approval by the Owner.

2.7.2 Through more extensive on-site observations of the work in progress and field checks of materials and equipment by the RPR and assistants, Engineer shall endeavor to provide further protection for Owner against defects and deficiencies in the work of the Contractor.

2.7.3 The RPR shall be the Engineer's agent at the site, will act as directed by and under the supervision of Engineer, and will confer with Engineer regarding RPR's actions. RPR's dealings in matters pertaining to the on-site work shall in general be with Engineer and Contractor keeping Owner advised as necessary. RPR's dealing with subcontractor shall only be through or with the full knowledge and approval of Contractor. RPR shall generally communicate with Owner with the knowledge of and under the direction of Engineer.

2.7.4 Duties and Responsibilities of RPR.

2.7.4.1 Schedules. Review the progress schedule, schedule of Shop Drawings submittals and schedule of values prepared by Contractor and consult with Engineer concerning acceptability.

2.7.4.2 Conferences and Meetings. Attend meetings with Contractor, such as Pre-Construction Conferences, Progress Meetings, Job Conferences and other project related meetings, and prepare and circulate copies of minutes thereof.

2.7.4.3 Liaison:

- Serve as Engineer's liaison with Contractor, working principally through Contractor's superintendent and assist in understanding the intent of the Contract Documents; and assist Engineer in serving as Owner's liaison with Contractor when Contractor's operations affect Owner's on-site operations.
- Assist in obtaining from Owner additional details or information when required for proper execution of the Work.

2.7.4.4 Shop Drawings and Samples:

- Record date of receipt of Shop Drawings and samples.
- Receive samples which are furnished at the site by Contractor, and notify Engineer of availability of samples for examination.
- Advise Engineer and Contractor of the commencement of any work requiring a Shop Drawing or sample if the submittal has not been approved by Engineer.

2.7.4.5 Review of Work, Rejection of Defective Work, Inspection and Test.

- Conduct on-site observations of the Work in progress to assist Engineer in determining if the Work is in general proceeding in accordance with the Contract Documents.
- Report to Engineer and Owner whenever RPR believes that any Work is unsatisfactory, faulty or defective or does not conform to the Contract Documents, or has been damaged, or does not meet the requirements of any inspection, test or approval required to be made; and advise Engineer of work that RPR believes should be corrected or rejected or should be uncovered for

- observations, or requires special testing, inspection or approval.
- Verify that tests, equipment and systems start-ups and operating and maintenance training are conducted in the presence of appropriate personnel, and that Contractor maintains adequate records thereof; and observe, record and report to Engineer appropriate details relative to the test procedures and start-ups.
 - Accompany visiting inspectors representing public agencies having jurisdiction over the Project, record the results of these inspections and report to Engineer.
- 2.7.4.6 Interpretation of Contract Documents. Report to Engineer and Owner when clarifications and interpretations of the Contract Documents are needed and transmit to Contractor clarifications and interpretations as issued by the Engineer.
- 2.7.4.7 Modifications. Consider and evaluate Contractor suggestions for modifications in Drawing or Specifications and report with RPR's recommendations to Engineer and Owner. Transmit to Contractor decisions as issued by Engineer.
- 2.7.4.8 Records.
- Maintain at the job site orderly files for correspondence, reports for job conferences, Shop Drawings, and samples, reproductions of original Contract Documents including all Work Directive Changes, Addenda, Change Orders, Field Orders, additional Drawings issued subsequent to the execution of the contract, Engineer's clarifications and interpretations of the Contract Documents, progress reports and other Project related documents.
 - Keep a diary or log book recording Contractor hours on the job site, weather conditions, data relative to questions of Work Directive Changes, Change Orders or changed conditions, list of job site visitors, daily activities, decisions, observations in general, and specific observations in more detail as in the case of observing test procedures, and send copies to Engineer and Owner.
 - Record names, addresses and telephone numbers of all Contractors, subcontractors and major suppliers of materials and equipment.
 - Keep pictorial record of progress of project.
- 2.7.4.9 Reports:
- Furnish Engineer and Owner periodic (daily) reports as required of progress of the work and of Contractor's compliance with the progress schedule and schedule of Shop Drawing and sample submittals.
 - Consult with Engineer in advance of scheduled major tests, inspections or start of important phases of the work.
 - Draft proposed Change Orders and Work Directive Changes, obtaining backup material from Contractor and recommend to Engineer Change Orders, Work Directive Changes and Field Orders in accordance with State and Local Laws.
 - Report immediately to Engineer and Owner upon the occurrence of any accident.
- 2.7.4.10 Payment Requests. Review applications for payment with Contractor for compliance with the established procedure as set forth in the Construction Contract for their submission and forward with recommendations to

Engineer noting particularly the relationship of the payment requested to the schedule of values, work completed and materials and equipment delivered at the site but not incorporated in the work.

2.7.4.11 Certificates, Maintenance and Operations Manuals. During the course of the work, verify that certificates, maintenance and operation manuals and other data required to be assembled and furnished by contractor are applicable to the times actually installed and in accordance with the Contract Documents, and having this material delivered to Engineer for review and forwarding to Owner prior to final payment for the work.

2.7.4.12 Completion.

- Before Engineer issues a Certificate of Substantial Completion, submit to Contractor a list of observed items requiring completion or correction.
- Conduct final inspection in the company of Engineer, Owner and Contractor and prepare a final list of items to be completed or corrected.
- Observe that all items on final list have been completed or corrected and make recommendation to Engineer concerning acceptance.

2.7.5 Limitation of Authority.

2.7.5.1 Resident Project Representative

- Shall not authorize any deviation from the Contract Documents or substitution of materials or equipment unless authorized by Engineer.
- Shall not exceed limitations of Engineer's authority as set forth in the Agreement or the Contract Documents.
- Shall not undertake any of the responsibilities of Contractor, Sub-Contractor or Contractor's superintendent.
- Shall not advise on, issue directions relative to or assume control over any aspect of the means, methods, techniques, sequences or procedures of construction unless such advice or directions are specifically required by the Contract Documents.
- Shall not advise on, issue directions regarding or assume control over safety precautions and programs in connection with the work.
- Shall not accept Shop Drawing or sample submittals from anyone other than Contractor.
- Shall not authorize Owner to occupy the project in whole or in part.
- Shall not participate in specialized field or laboratory tests or inspections conducted by others except as specifically authorized by Engineer.

3.0 SERVICES OF THE OWNER

- 3.1 Provide full information as to the requirements of the Project.
- 3.2 Assist the Engineer in planning and design services by placing at his disposal all existing plans, maps, field notes, statistics, computations and other data in its possession relative to existing facilities.
- 3.3 Guarantee access to and make all provisions for the Engineer and his subconsultants to enter upon public property as required for performing the services.

4.0 COMPENSATION

- 4.1 For performance of Basic Engineering and Resident Engineering and Inspection as outlined in Section 2, Paragraphs 2.1 through 2.8.5.1 inclusive, required by the Owner, the Owner shall authorize and pay the Engineer as per the following:

- 4.1.1 Owner shall pay Engineer for the performance of Basic Engineering services as outlined in Section 2, Paragraphs 2.1 through 2.7.9 inclusive, a professional engineering fee based upon either a percentage of the construction cost of the project or a lump sum estimate by the Engineer. (mark the method of compensation with an X)

N/A Percentage of construction method is to be used, the fee shall be determined by referring to curve N/A on page N/A (Exhibit B) of this Contract, which indicates the rate of compensation for Basic Engineering Services expressed as a percentage of the construction cost. This curve is from American Society of Civil Engineer's Manual No. 45, 1980 Edition.

X Not to exceed amount Part A \$18,800 and Part B \$19,400. Services are to be paid according to section 4.2.2.

- 4.1.1.1 The fee for basic engineering services based on a percentage of the construction costs will have a maximum limitation of 110% of the Engineer's opinion of probable construction cost submitted with the final Drawings and Specifications referred to in Section 2, Paragraph 2.4.2 of this Contract. The fee for basic engineering services based on a percentage of the construction cost will have a minimum limitation of 90% of the Engineer's opinion of probable construction cost submitted with the final Drawings and Specifications referred to in Section 2, Paragraph 2.4.2 of this Contract.
- 4.1.1.2 An estimated construction cost based on the Engineer's conceptual opinion of probable cost for the project shall initially be used for the determination of interim fees until the more detailed Engineer's revised opinion of probable total project costs based on the final Drawings and Specifications referred to in Section 2, Paragraph 2.4.2 of this Contract is available.
- 4.1.1.3 Payment for basic engineering services shall be made based upon Engineer's estimate of the proportion of the services actually completed at the time of billing and shall be made in partial payments at monthly intervals for the following phases:
- For performing services outlined in Section 2.2, Conceptual Design Report Phase, Paragraphs 2.2.1 through 2.2.8 inclusive, Owner agrees to pay Engineer as follows:
 - Ten percent (10%) of the total basic engineering services fee. Said fee shall be payable in partial payments on a monthly basis.
 - For performing services outlined in Section 2.3 Design Memorandum Phase, Paragraphs 2.3.1 through 2.3.3 inclusive, Section 2.4 Design Phase, Paragraphs 2.4.1 through 2.4.6 inclusive, Owner agrees to pay Engineer as follows:
 - Sixty percent (60%) of the total basic engineering service fee. Said fee shall be payable in partial payments on a monthly basis.
 - For performing services outlined in Sections 2.5 Bidding Phase, Paragraphs 2.5.1 through 2.5.6 inclusive and Section 2.6 Construction Phase, Paragraphs 2.6.1 through 2.6.15 inclusive, and

Section 2.7, Close-out and Operational Phase, Paragraphs 2.7.1 through 2.7.8 inclusive, the Owner agrees to pay Engineer as follows:

- Thirty percent (30%) of the total basic engineering service fee. Said fee shall be payable in partial payments on a monthly basis.

4.1.1.4 Payment for basic engineering services on projects that do not require construction services, such as feasibility studies or drainage studies, shall be made based upon Engineer's estimate of the proportion of the services actually completed at the time of billing and shall be made in partial payments at monthly intervals for the following phases:

- For performing services outlined in Section 2.2, Conceptual Design Report Phase, Paragraphs 2.2.1 through 2.2.8 inclusive, Owner agrees to pay Engineer as follows:

- Thirty percent (30%) of the total basic engineering services fee. Said fee shall be payable in partial payments on a monthly basis.

- For performing services outlined in Section 2.3 Design Memorandum Phase, Paragraphs 2.3.1 through 2.3.5 inclusive, Section 2.4 Design Phase, Paragraphs 2.4.1 through 2.4.5 inclusive, Owner agrees to pay Engineer as follows:

- Seventy percent (70%) of the total basic engineering service fee. Said fee shall be payable in partial payments on a monthly basis.

4.1.1.5 If the Project, or any portion thereof, is not constructed for any reason, the final fee for basic engineering services shall be negotiated between Owner and Engineer as per section 7.0.

4.1.2 Owner shall pay Engineer for the performance of Resident Engineering and Inspection as outlined in Section 2, Paragraphs 2.8 through 2.8.5.1 inclusive, at monthly intervals based on either the hourly rate included in Exhibit B on page 20 of this Contract or by an agreed upon rate between the Owner and Engineer. Payment can be by billable hours for a not to exceed amount.

4.2 If authorized in writing by Owner, for the performance of, or for obtaining from others Additional Services which are not considered normal or customary Basic Engineering or Resident Engineering and Inspection Services, the Owner shall pay Engineer in accordance with Paragraph 4.2.1 through 4.2.3, based on monthly invoices submitted by the Engineer, within sixty (60) days of receipt of Engineer's invoice.

4.2.1 For Additional Services provided by the Engineer such as, but not limited to, wetlands permitting, land and right-of-way acquisition, surveying, NPDES and LADEQ permit renewal or acquisition work, etc. Owner shall pay Engineer based on either the hourly rate included in Exhibit B on page 20 of this Contract or by an agreed upon rate between the Owner and Engineer. Payment can be by either billable hours, lump sum, or not to exceed amount.

4.2.2 The following documentation shall be required for payment to Engineer and shall be attached to the monthly invoice.

- A copy of the Owner's written authorization to perform the service.
- Timesheets for all hours invoiced.
- Invoice copies, logs or other substantiation of nonsalary expenses.

4.2.3 For Additional Services that Engineer acquires from subcontractors and/or subconsultants, Owner shall pay Engineer a fixed sum

previously agreed upon by Owner and Engineer, such sum to be established in each case when the scope of the work involved has been determined and before any of the Additional Services are provided. The use of subcontractors and/or subconsultants shall be subject to the provisions set forth in Section 10, Paragraph 10.4 and Section 11, Paragraph 11.4 of this Contract. The following documentation shall be required for payment to Engineer and shall be attached to the monthly invoice.

- A copy of the Owner's written consent for the subcontractor and/or subconsultant to perform the service stating the Owner's and Engineer's agreed upon fixed sum established for the service performed.
- Evidence that the subcontractor and/or subconsultant is insured as required by Section 10, Paragraph 10.4 of this Contract.

4.2.4 For Additional Engineering described in Section 5, Paragraph 5.1.1, Owner shall pay Engineer for the fee negotiated at the time the work is assigned by the method stipulated in the contract amendment.

5.0 CHARACTER AND EXTENT OF ADDITIONAL ENGINEERING

5.1 The Owner reserves the right to request Engineer to provide Additional Engineering and/or Additional Services described in Section 5, Paragraphs 5.1.1 through 5.1.2.11 inclusive. It is mutually understood that the Owner reserves the right to reevaluate any/all interested Engineering Firms concerning Additional Engineering or Additional Services as described in Section 5.0. The Owner shall issue written authorization to the Engineer to provide Additional Engineering and/or Additional Services prior to the performance of any Additional Engineering and/or Additional Services as described in Section 5, Paragraph 5.1 through 5.1.2.11 inclusive.

5.1.1 Additional Engineering. Provide Basic Design and Construction Engineering Services for a negotiated fee. The fee for Basic Engineering Services related to the design and construction for the associated work shall be negotiated at the time the work is assigned and this Contract shall be amended to include that work in accordance with Section 4.0 of this Contract.

5.1.2 Additional Services. Furnish or obtain from others Additional Services of the following types. The fee for Additional Services shall be authorized at the time the work is assigned in accordance with Section 4.2 of this contract.

5.1.2.1 Providing necessary design topographic surveying for the Project to obtain existing grading, locations and dimensions of existing structures, and elevation of critical elements.

5.1.2.2 Furnish survey personnel to lay out and stake out for construction, giving line locations and grade stakes at the required intervals.

5.1.2.3 Prepare to and serve as an expert witness for the Owner in any litigation.

5.1.2.4 Furnish one or more full time Resident Inspectors who will direct his and/or their efforts toward providing assurance for the owner that the completed project will conform to the requirements of the Contract Documents. This shall not be construed as the actual direction of construction work being performed by the Contractor, nor make the engineers responsible for construction techniques, sequences or procedures or the safety precautions incident thereto. A written resume will be submitted to the Owner for each Resident Inspector assigned to the Project. The Owner retains the right to disapprove the use of any Resident Inspector the owner feels is, for any reason, not qualified.

5.1.2.5 Act as the Owner's representative in coordination of and be present during negotiations between Owner and other Governmental Bodies, Utility Companies, Transportation

Companies, etc. (Prepare necessary data for such activities and review and make recommendations on data submitted by such agencies.)

- 5.1.2.6 Services resulting from significant changes in the general scope, extent or character of the Project or its design including, but not limited to, changes in size, complexity, Owner's schedule, character of construction or method of financing; and revising previously accepted studies, reports, design documents or Contract Documents when such revisions are required by changes in laws, rules, regulations, ordinances, codes or orders enacted subsequent to the preparation of such studies, reports or documents or are due to any other causes beyond Engineer's control as approved by Owner.
- 5.1.2.7 Providing renderings or models for Owner's use.
- 5.1.2.8 Preparing documents in addition to those furnished under Design Engineering and Construction Services for alternate bids requested by Owner for Contractor's work which is not executed or documents for out-of-sequence work.
- 5.1.2.9 Providing any type of property surveys or related engineering services needed for the transfer of interests in real property.
- 5.1.2.10 Assistance in connection with re-bidding or renegotiating contracts for construction, materials, equipment or services.
- 5.1.2.11 Provide technical consultation and advice on the completed project after the initial thirty (30) day start-up period.

6.0 OWNERSHIP OF DOCUMENTS,

- 6.1 Documents including but not limited to plans, specifications, maps, basic survey notes, sketches, charts, computations and all other data prepared or obtained under the terms of this authorization shall become the property of the Owner and shall be made available for Owner's inspection at anytime during the Project and, shall be delivered to the Owner prior to termination or final completion of the Contract.
- 6.2 Engineer may retain a set of documents for its files.
- 6.3 Reuse of Documents. Any reuse of documents or materials without written authorization or adaptation by Engineer to the specific purpose intended will be at Owner's sole risk and without liability or legal exposure to Engineer or to Engineer's independent professional associates, subcontractors, and consultants.
- 6.4 No materials, to include but not limited to reports, maps or other documents produced as a result of this Contract, in whole or in part, shall be available to Engineer for copyright purposes. Any such materials produced as a result of this Contract that might be subject to copyright shall be the property of the Owner and all such rights shall belong to the Owner, and the Owner shall be sole and exclusive entity who may exercise such rights.

7.0 TERMINATION.

- 7.1 This Agreement may be terminated by either party upon thirty (30) days written notice.
- 7.2 The Engineer, upon receipt of such notice, shall immediately discontinue all services in connection with the performance of this Agreement and shall proceed to cancel promptly all existing orders and contracts insofar as such orders or contracts are chargeable to this Agreement.
- 7.3 The Engineer shall, as soon as practicable after receipt of notice of termination, submit a statement showing in detail the services performed and payments received under this Agreement to the date of termination.
- 7.4 The Owner shall then pay the Engineer promptly that portion of the prescribed fee to which both parties agree.
- 7.5 Failure to meet agreed delivery dates or authorized extensions pertaining to Contract sections 2.2.8, 2.3.3, and 2.7.9 are considered substantial failures.

- 8.0 COMPLIANCE WITH LAWS AND ORDINANCE.
- 8.1 The Engineer hereby agrees to comply with all Federal, State and Local Laws and Ordinances applicable to the work or services under this Contract.
- 9.0 SUCCESSORS AND ASSIGNS
- 9.1 Owner and Engineer each bind himself, his successors, executors, administrators and assigns to the other party to this Agreement, and to the successors, executors, administrators and assigns of each other party in respect to all covenants of this Agreement.
- 10.0 INSURANCE
- 10.1 The Engineer shall secure and maintain at his expense such insurance that will protect him and the Owner, from claims under Workmen's Compensation Acts and from claims for bodily injury, death or property damage which may arise from performance of services under this Agreement. Insurance for bodily injury or death shall be in the unencumbered amount of \$500,000.00 for one person and not less than \$1,000,000.00 for all injuries and/or deaths resulting from any one occurrence. The insurance for property damage shall be in the unencumbered amount of \$250,000.00 for each accident and not less than \$1,000,000.00 aggregate.
- 10.2 The Engineer shall also secure and maintain at his expense professional liability insurance in the unencumbered sum of \$500,000.00.
- 10.3 All certificates of insurance SHALL BE FURNISHED TO THE OWNER and shall provide that insurance shall not be cancelled without ten (10) days prior written notice to the Owner. The Owner may examine the policies.
- 10.4 Engineer shall include all subcontractors and/or subconsultants as insured under its policies or shall furnish separate certificates for each. All coverages for subcontractors and/or subconsultants shall be subject to all the requirements stated herein.
- 10.5 St Charles Parish shall be named as an additional insured on general liability insurance policies.
- 10.6 For all purposes under Louisiana law, the principals of this Contract shall be recognized as the statutory employer of all contract employees as provided in LSA-R.S. 23:1061.
- 11.0 GENERAL.
- 11.1 The Engineer shall indemnify and save harmless the Owner against any and all claims, demands, suits or judgments for sums of money to any party for loss of life or injury or damages to person or property growing out of, resulting from or by reason of any negligent act by the Engineer, its agent, servants or employees, while engaged upon or in connection with the services required or performed hereunder.
- 11.2 While in the performance of services or carrying out other obligations under this Agreement, the Engineer shall be acting in the capacity of the independent contractors and not as employees of the Owner. The Owner shall not be obligated to any person, firm or corporation for any obligations of the Engineer arising from the performance of their services under this Agreement. The Engineer shall be authorized to represent the Owner with respect to services being performed, dealing with other agencies and administrations in order to perform the services under this Contract.
- 11.3 The Engineer warrants that he has not employed or retained any company or person other than a bona-fide employee working solely for the consultant, to solicit or secure this Contract, and that they have not paid or agreed to pay any company or person other than bona-fide employees working solely for the consultant, any fee, commission, percentage, brokerage fee, gifts or any other consideration, contingent upon or resulting from the award or making of this Contract. For breach or violation of this warranty, the Owner shall have the right to annul this Contract without liability.
- 11.4 This Agreement being for the personal services of the Engineer shall not be assigned or subcontracted in whole or in part by the Engineer as to the

services to be performed hereunder without the written consent of the Owner.

- 11.5 Should either party to this Agreement have to file suit in order to enforce the provisions of hereof, the losing party hereby agrees to pay the attorney's fees of the prevailing party.
- 11.6 No member of the Governing Body of the Owner and no other officer, employee or agent of the Owner who exercises any functions or responsibilities in connection with the planning and carrying out to the Program, shall have any personal financial interest, direct or indirect, in this Contract, and the Engineer shall take appropriate steps to assure compliance.
- 11.7 No member of the Governing Body of the locality and no other public official of such locality, who exercises any functions or responsibilities in connection with the planning and carrying out of the Program, shall have any personal financial interest, direct or indirect, in this Contract, and the Engineer shall take appropriate steps to assure compliance.
- 11.8 The Engineer covenants that he presently has no interest and shall not acquire interest, direct or indirect, in the project area or any parcels therein or any other interest which would conflict in any manner or degree with the performance of his services hereunder. The Engineer further covenants that in the performance of this Contract no person having any such interest shall be employed.
- 12.0 ACCESS TO SITE.
- 12.1 Owner shall be fully responsible for obtaining the necessary access authorizations to allow Engineer, its agents, subcontractors and representatives, to have access to all areas of public and private property as required by Engineer in order to perform its services under this Agreement.
- 13.0 WARRANTY.
- 13.1 Engineer warrants that it will perform its design services with the degree of skill and to the standard of care required of the engineering profession to meet all Federal, State and Local requirements
- 13.2 If Engineering Services for project designed by Engineer does not meet those requirements noted in 13.1 above, then to the extent that this occurs as a direct result of Engineer's failure to meet the standard of care in its design services, Engineer will indemnify the Parish for Engineer's share of the costs incurred to bring Engineering Services for project to the limitations mandated.
- 13.3 The obligations expressed in 13.1 and 13.2 in no way limits the Engineer's obligations expressed elsewhere in this Contract.
- 14.0 EXCLUSIVE JURISDICTION AND VENUE
- 14.1 For all claims arising out of or related to this agreement, ENGINEER hereby consents and yields to the exclusive jurisdiction and venue of the Twenty-Ninth Judicial District Court for the Parish of St. Charles and expressly waives any (a) pleas of jurisdiction based upon ENGINEER'S residence and (B) right of removal to Federal Court based upon diversity of citizenship.

IN WITNESS WHEREOF, the parties to these presents have hereunto caused these presents to be executed the day, month and year first above mentioned.

WITNESSES:

ST. CHARLES PARISH

Nicole Breau

Lalanie Berthelot

V. J. St. Pierre, Jr.

V. J. St. Pierre, Jr.
Parish President

WITNESSES:

EVANS-GRAVES
ENGINEERS, INC.

Michelle Blum

Jack

Ashlyn Graves

Ashlyn Graves
Vice President

EXHIBIT A

The following contract documents and specifications are to be assembled, bound using plastic comb binders, and delivered to St. Charles Parish Public Works Office. The contract document is basically the bid document with forms completed according to the instructions below, and all project specifications that were included in the bid document.

Five (5) contract documents with the following (in sequence):

- Cover sheet prepared by engineer with stamp.
- Copy of the Table of Contents from bid book.
- Copy of the actual Advertisement for Bid showing all dates (section 00010).
- Copy of Instructions to Bidders (section 00100) and Information Available to Bidders (section 00200) from bid book.
- Copy of the completed Bid Form from selected/winning bid (section 00300) and a copy of all addendums.
- Copy of the bid opening and tabulation forms.
- Copy of the signed Bid Bond from selected/winning bid (section 00410) and its corresponding power of attorney.
- Copy of the completed Questionnaire from selected/winning bid (section 00430).
- Copy of the Schedule of Suppliers from selected/winning bid (section 00450).
- Original Non-Collusive and Non-Solicitation Affidavit signed, dated, and notarized (section 00480). All books must have an originally signed document.
- Original and current Corporate Resolution authorizing execution of contract signed and dated (section 00485). All books must have an originally signed document. The resolution on corporate stationary is acceptable as long as it follows the wording of St Charles Parish's standard form (section 00485).
- Original signed agreement (section 00500) and not dated. Document will be dated when Parish President signs agreement. Contract price must agree with Bid Form amount. Blanks in article 7 must also be completed. All books must have an originally signed document.
- Original Performance and Payment Bond (section 00610) completed, signed, dated, and sealed. The date on page 00610-1 is to be left blank and will be dated when the Parish President signs the agreement form. An original power of attorney must accompany each bond document. All books must have originally signed documents.
- Original certificate of insurance. Computer generated signature acceptable. The Certificate must name St Charles Parish as an additional insured on all general liability policies and the standard cancellation clause must read as follows:

“Should any of the above described policies be canceled or changed by restricted amendment before the expiration date thereof, the issuing Company will give thirty (30) days written notice to the below named certificate holder.

- Copy of the following documents from the bid document: Certificate of Owner's Attorney (section 00670); General Conditions, Supplementary Conditions, and Second Supplementary Conditions (sections 00700, 00800, 00801); and forms Change Order, Certificate of Substantial Completion, Notice of Award, and Notice to Proceed (sections 00806, 00808, 00810, 00812).
- Copy of all Division 01 through Division 16 specifications that were included in the bid document.

One (1) contract document with the following:

- Cover sheet prepared by engineer with stamp and marked Court File Copy.
- All the above documents except for General Conditions (section 00700), Supplementary Conditions (section 00800), and Second Supplementary Conditions (section 00801). Originals specified above are also required in this book.

EXHIBIT B
RATE SCHEDULE

FEE SCHEDULE
TIME CHARGE SERVICES

| <u>CLASSIFICATION</u> | <u>HOURLY RATES</u> |
|----------------------------------|---------------------|
| Senior Principal (P.E.) | \$ 200.00 |
| Principal (P.E.) | \$ 160.00 |
| Chief Engineer (P.E.) | \$ 145.00 |
| Special Projects Engineer (P.E.) | \$ 140.00 |
| Senior Engineer (P.E.) | \$ 130.00 |
| Construction Engineer (P.E.) | \$ 105.00 |
| Engineer (P.E.) | \$ 100.00 |
| Senior Consultant (P.E.) | \$ 120.00 |
| Consultant (P.E.) | \$ 95.00 |
| Engineer Intern (E.I.) | \$ 80.00 |
| Senior Designer | \$ 95.00 |
| Designer | \$ 90.00 |
| Planner | \$ 80.00 |
| Landscape Architect | \$ 95.00 |
| Project Coordinator | \$ 75.00 |
| Senior Technician | \$ 80.00 |
| Technician | \$ 65.00 |
| CADD Drafter | \$ 50.00 |
| Construction Administrator | \$ 80.00 |
| Inspector | \$ 90.00 |
| Professional Land Surveyor | \$ 110.00 |
| Five (5) Man Field Survey Party | \$ 155.00 |
| Four (4) Man Field Survey Party | \$ 135.00 |
| Three (3) Man Field Survey Party | \$ 115.00 |
| Two (2) Main Field Survey Party | \$ 85.00 |
| Survey Party Chief | \$ 50.00 |
| Engineering Aide | \$ 60.00 |
| Administrative Assistant | \$ 55.00 |
| GPS Equipment | \$ 50.00 |

PROJECT: Install Control Gates on Culverts and Prescott Pump Station and Temporary Pumps at Walker and Almedia Tidal Control Structures

LOCATION: St. Charles Parish, Louisiana DATE 2/26/10

BY: P. Stephen Lundgren, Jr., P.E. PERIOD: One year (until 2/26/11)

REMARKS: Above rates increased by 25% for expert testimony and legal proceedings.

REIMBURSABLE EXPENSES: (Not included in above rates). 4-Wheeler billed at \$100/day. Long Distance telephone charges, express mail, printing and reproduction, regulatory agency and recording fees; travel, food and lodging outside of the Baton Rouge, Louisiana area; special equipment or supplies all billed at invoice amount, plus an administrative charge of 10%. Mileage outside of the Baton Rouge, Louisiana area at \$.445 per mile.



CERTIFICATE OF LIABILITY INSURANCE

DATE (MM/DD/YYYY)
02/26/10

PRODUCER 1-225-292-3515
 Arthur J. Gallagher Risk Management Services, Inc.
 235 Highlandia Drive
 Suite 200
 Baton Rouge, LA 70810
 Fax: 225-292-3893

THIS CERTIFICATE IS ISSUED AS A MATTER OF INFORMATION ONLY AND CONFERS NO RIGHTS UPON THE CERTIFICATE HOLDER. THIS CERTIFICATE DOES NOT AMEND, EXTEND OR ALTER THE COVERAGE AFFORDED BY THE POLICIES BELOW.

INSURED
 Evans-Graves Engineers, Inc.
 9029 Jefferson Highway, Suite 200
 Baton Rouge, LA 70809

| INSURERS AFFORDING COVERAGE | NAIC # |
|---|--------|
| INSURER A: NETHERLANDS INSURANCE CO | 24171 |
| INSURER B: PEERLESS INSURANCE CO | 24198 |
| INSURER C: AMERICA FIRST INSURANCE CO | 12696 |
| INSURER D: CONTINENTAL CASUALTY OF NORTH AMER | 20443 |
| INSURER E: | |

COVERAGES

THE POLICIES OF INSURANCE LISTED BELOW HAVE BEEN ISSUED TO THE INSURED NAMED ABOVE FOR THE POLICY PERIOD INDICATED. NOTWITHSTANDING ANY REQUIREMENT, TERM OR CONDITION OF ANY CONTRACT OR OTHER DOCUMENT WITH RESPECT TO WHICH THIS CERTIFICATE MAY BE ISSUED OR MAY PERTAIN, THE INSURANCE AFFORDED BY THE POLICIES DESCRIBED HEREIN IS SUBJECT TO ALL THE TERMS, EXCLUSIONS AND CONDITIONS OF SUCH POLICIES. AGGREGATE LIMITS SHOWN MAY HAVE BEEN REDUCED BY PAID CLAIMS.

| INSR ADD'L LTR INSRD | TYPE OF INSURANCE | POLICY NUMBER | POLICY EFFECTIVE DATE (MM/DD/YYYY) | POLICY EXPIRATION DATE (MM/DD/YYYY) | LIMITS | |
|---|--|---------------|------------------------------------|-------------------------------------|--|--------------|
| A | GENERAL LIABILITY | CBP9862753 | 07/01/09 | 07/01/10 | EACH OCCURRENCE | \$ 1,000,000 |
| | <input checked="" type="checkbox"/> COMMERCIAL GENERAL LIABILITY | | | | DAMAGE TO RENTED PREMISES (Ea occurrence) | \$ 100,000 |
| | <input type="checkbox"/> CLAIMS MADE <input checked="" type="checkbox"/> OCCUR | | | | MED EXP (Any one person) | \$ 10,000 |
| | GEN'L AGGREGATE LIMIT APPLIES PER: | | | | PERSONAL & ADV INJURY | \$ 1,000,000 |
| <input checked="" type="checkbox"/> POLICY <input type="checkbox"/> PRO-JECT <input type="checkbox"/> LOC | | | | | GENERAL AGGREGATE | \$ 2,000,000 |
| | | | | | PRODUCTS - COMP/OP AGG | \$ 2,000,000 |
| B | AUTOMOBILE LIABILITY | BA9863553 | 07/01/09 | 07/01/10 | COMBINED SINGLE LIMIT (Ea accident) | \$ 1,000,000 |
| | <input checked="" type="checkbox"/> ANY AUTO | | | | BODILY INJURY (Per person) | \$ |
| | <input type="checkbox"/> ALL OWNED AUTOS | | | | BODILY INJURY (Per accident) | \$ |
| | <input type="checkbox"/> SCHEDULED AUTOS | | | | PROPERTY DAMAGE (Per accident) | \$ |
| <input checked="" type="checkbox"/> HIRED AUTOS | | | | | AUTO ONLY - EA ACCIDENT | \$ |
| <input checked="" type="checkbox"/> NON-OWNED AUTOS | | | | | OTHER THAN AUTO ONLY: EA ACC | \$ |
| | | | | | AGG | \$ |
| C | EXCESS / UMBRELLA LIABILITY | CU9864153 | 07/01/09 | 07/01/10 | EACH OCCURRENCE | \$ 5,000,000 |
| | <input checked="" type="checkbox"/> OCCUR <input type="checkbox"/> CLAIMS MADE | | | | AGGREGATE | \$ 5,000,000 |
| | <input type="checkbox"/> DEDUCTIBLE | | | | | \$ |
| | <input checked="" type="checkbox"/> RETENTION \$ 10,000 | | | | | \$ |
| B | WORKERS COMPENSATION AND EMPLOYERS' LIABILITY | WC9863753 | 07/01/09 | 07/01/10 | <input checked="" type="checkbox"/> WC STATU-TORY LIMITS <input type="checkbox"/> OTH-ER | |
| | ANY PROPRIETOR/PARTNER/EXECUTIVE OFFICER/MEMBER EXCLUDED? (Mandatory in NH) | | | | E.L. EACH ACCIDENT | \$ 500,000 |
| | If yes, describe under SPECIAL PROVISIONS below | | | | E.L. DISEASE - EA EMPLOYEE | \$ 500,000 |
| | | | | | E.L. DISEASE - POLICY LIMIT | \$ 500,000 |
| D | OTHER Professional Liability (Claims Made) | AEA008220586 | 07/07/09 | 07/07/10 | Per Claim: | 1,000,000 |
| | | | | | Aggregate: | 2,000,000 |

DESCRIPTION OF OPERATIONS / LOCATIONS / VEHICLES / EXCLUSIONS ADDED BY ENDORSEMENT / SPECIAL PROVISIONS
 See attached for Additional Insured and Waiver of Subrogation Information

CERTIFICATE HOLDER

CANCELLATION *10 Days for Non-Payment of Premium

St. Charles Parish
 15045 Hwy. 18
 P.O. Box 302
 Hahnville, LA 70057

SHOULD ANY OF THE ABOVE DESCRIBED POLICIES BE CANCELLED BEFORE THE EXPIRATION DATE THEREOF, THE ISSUING INSURER WILL ENDEAVOR TO MAIL 30* DAYS WRITTEN NOTICE TO THE CERTIFICATE HOLDER NAMED TO THE LEFT, BUT FAILURE TO DO SO SHALL IMPOSE NO OBLIGATION OR LIABILITY OF ANY KIND UPON THE INSURER, ITS AGENTS OR REPRESENTATIVES.

AUTHORIZED REPRESENTATIVE

USA

ACORD 25 (2009/01) marmcma
 14590170

© 1988-2009 ACORD CORPORATION. All rights reserved.

The ACORD name and logo are registered marks of ACORD

IMPORTANT

If the certificate holder is an ADDITIONAL INSURED, the policy(ies) must be endorsed. A statement on this certificate does not confer rights to the certificate holder in lieu of such endorsement(s).

If SUBROGATION IS WAIVED, subject to the terms and conditions of the policy, certain policies may require an endorsement. A statement on this certificate does not confer rights to the certificate holder in lieu of such endorsement(s).

DISCLAIMER

This Certificate of Insurance does not constitute a contract between the issuing insurer(s), authorized representative or producer, and the certificate holder, nor does it affirmatively or negatively amend, extend or alter the coverage afforded by the policies listed thereon.

SUPPLEMENT TO CERTIFICATE OF INSURANCE

DATE
02/26/10

NAME OF INSURED: Evans-Graves Engineers, Inc.

Additional Description of Operations/Remarks from Page 1:

Additional Information:

Additional Insured (Form #22-45LA 09/02), per written contract, as respects General Liability Policy
Additional Insured (Form #16-59e 11/02), per written contract, as respects Business Auto Policy
Waiver of Subrogation, per written contract, in favor of certificate holder as respects Worker
Compensation, General Liability and Business Auto.
Umbrella is Follow Form of the underlying coverage.

SUPP (05/04)

2010-0103

INTRODUCED BY: ST. CHARLES PARISH COUNCIL

RESOLUTION NO. 5732

A resolution authorizing the issuance of a Special License to Hahnville High School Dugout Club to conduct a Super Bingo.

WHEREAS, Parishes of the State of Louisiana are authorized to issue special licenses for super bingos pursuant to the authority granted by L.R.S. 4861.7; and,

WHEREAS, Section II.D. of Ordinance No. 89-4-2 provides that the Parish Council may issue by resolution special licenses for the conduct of bingo sessions at which the total amount of prizes to be awarded shall not exceed twenty-five thousand dollars (\$25,000.00) in cash or other thing(s) of value.

NOW, THEREFORE, BE IT RESOLVED, THAT WE, THE MEMBERS OF THE ST. CHARLES PARISH COUNCIL, do hereby authorize the issuance of a Special License to Hahnville High School Dugout Club to conduct a Super Bingo on Monday, April 5, 2010, with the total amount of prizes to be awarded not exceeding Fifteen Thousand dollars (\$15,000.00).

The foregoing resolution having been submitted to a vote, the vote thereon was as follows:

YEAS: SCHEXNAYDRE, AUTHEMENT, RAYMOND, TASTET, BENEDETTO, HOGAN, COCHRAN, LAMBERT, NUSS
NAYS: NONE
ABSENT: NONE

And the resolution was declared adopted this 22nd day of March, 2010, to become effective five (5) days after publication in the Official Journal.

Bingo-HHS Dugout Club 2010

CHAIRMAN: Billy Raymond, Sr
SECRETARY: Barbara Jacob Sueder
DLVD/PARISH PRESIDENT: March 23, 2010
APPROVED: DISAPPROVED:
PARISH PRESIDENT: W. S. S. S.
RETD/SECRETARY: March 24, 2010
AT: 10:25 a.m. RECD BY: BJT

2010-0104

INTRODUCED BY: V.J. ST. PIERRE, JR., PARISH PRESIDENT
(GRANTS OFFICE)

RESOLUTION NO. 5733

A resolution to approve and authorize the execution of an Agreement between the State of Louisiana Department of Culture, Recreation and Tourism, Office of State Parks, Division of Outdoor Recreation and St. Charles Parish for Federal funding in the amount of \$150,000.00 for Phase I of the Rathborne Park Development, Federal Project No. 22-00910.

WHEREAS, St. Charles Parish submitted an application seeking Federal assistance in the amount of \$150,000.00 from the Land and Water Conservation Fund (L&WCF) for the development of Phase I of Rathborne Park; and,

WHEREAS, on March 16, 2009, the St. Charles Parish Council adopted Resolution No. 5627 in support of the submission of said application; and,

WHEREAS, by way of a letter dated February 11, 2010, from Mr. Cleve Hardman, Alternate State Liaison Officer, Department of Culture, Recreation and Tourism, advised that the St. Charles Parish L&WCF application was selected for funding; and,

WHEREAS, the development will consist of a baseball field, playground equipment, bike racks, pavilions, picnic tables, grills, fitness stations, benches, site work, bleachers, parking lot and a L&WCF sign; and,

WHEREAS, any wiring covered in this project, or wiring done in the future on this site, must be placed underground; and,

WHEREAS, the Parish has obligated \$150,000.00 or fifty percent (50%) of the estimated project cost in matching funds to satisfactorily complete said project and thus become eligible for the L&WCF assistance; and,

WHEREAS, sufficient funds are on hand to fund said project; and,

WHEREAS, the State has prepared an Agreement to provide funding for said project and it is the desire of the Parish Council to approve said Agreement.

NOW, THEREFORE, BE IT RESOLVED, THAT WE, THE MEMBERS OF THE ST. CHARLES PARISH COUNCIL, do hereby approve and authorize the execution of an Agreement between the State of Louisiana Department of Culture, Recreation and Tourism, Office of State Parks, Division of Outdoor Recreation and St. Charles Parish for funding of Phase I of the Rathborne Park Development, Federal Project No. 22-00910.

BE IT FURTHER RESOLVED that any wiring covered in this project, or wiring done in the future on this site, will be placed underground; and,

BE IT FURTHER RESOLVED that the Parish President is hereby authorized to execute said Agreement, to take necessary action to complete this project, and to act on behalf of St. Charles Parish in all matters pertaining to this project.

The foregoing resolution having been submitted to a vote, the vote thereon was as follows:

YEAS: SCHEXNAYDRE, AUTHEMENT, RAYMOND, TASTET, BENEDETTO, HOGAN, COCHRAN, LAMBERT, NUSS
NAYS: NONE
ABSENT: NONE

And the resolution was declared adopted this 22nd day of March, 2010, to become effective five (5) days after publication in the Official Journal.

CHAIRMAN: Billy Raymond, Sr.

SECRETARY: Chelisa Jara-Jucker

DLVD/PARISH PRESIDENT: March 23, 2010

APPROVED: ✓ DISAPPROVED: _____

PARISH PRESIDENT: Werk

RETD/SECRETARY: March 24, 2010

AT: 10:25 a.m. RECD BY: BGT

LOUISIANA DEPARTMENT OF CULTURE RECREATION AND TOURISM
OFFICE OF STATE PARKS
DIVISION OF OUTDOOR RECREATION

LAND AND WATER CONSERVATION FUND STATE PROJECT AGREEMENT

Project Sponsor ST. CHARLES PARISH GOVERNMENT Parish ST. CHARLES Region 3

Federal No. 22-00 910 Project Name RATHBORNE PARK DEVELOPMENT

Project Cost \$ 300,000.00 Approved Funds \$ 150,000.00 Project Period 01/22/10 - 12/31/14

The undersigned political subdivision of the State of Louisiana does hereby agree and accept the same responsibility and obligations as set out in the herein described project and to the same extent and in the same manner, including all federal requirements, as does the State of Louisiana.

PROJECT SCOPE (Description of Project)

The St. Charles Parish Government will develop a 12.63+/- acres of land located on the Cousins Canal southeast of Luling, St. Charles Parish, Louisiana. Development will consist of a Baseball Field, Playground Equipment, Bike Racks, Pavilions, Picnic Tables, Grills, Fitness Stations, Benches, Site Work, Bleachers, Parking Lot and L&WCF sign.

ALL UTILITY LINES WILL BE PLACED UNDERGROUND.

The State of Louisiana hereby promises to obtain federal monies for that portion of the project referred to as "federal funds", to accept such funds from the United States and disburse same to participant or its fiscal agent that portion of the total obligation that is the United States' share. It is understood by the parties hereto that this agreement shall not obligate State of Louisiana funds for the project costs described herein. It is further understood that in the event federal funds are not available for this project within a period of one year from the date of this agreement that this agreement is null and void. The participant hereby promises, in consideration of the promises made by the State herein, to execute the project stage described in accordance with the terms of this agreement, it being understood that incurred costs will not be reimbursed without written approval that such federal funds have been encumbered.

The following are hereby incorporated into this agreement: 1) General Provisions as set out in the L&WCF Manual; and 2) Project application and attachments.

The following special project terms and conditions were added to this agreement before it was signed by the parties hereto:

Compliance with Executive Order 12432 as described in Attachment #1

Compliance with OMB Circular A-133 which requires annual audits while project is active and a final audit upon completion.

Compliance with the terms and intent of P.O. 93-234 the Flood Disaster Protection Act of 1973; P.L. 90-480, Architectural Barriers Act of 1968, P.L. 101-336, Uniform Relocation Assistance and Real Property Acquisition Policies Act of 1970 Historic Properties Preservation Act of 1966 (80 Stat. 915 16 U.S.C. 470; National Environmental Policy Act of 1969 (P.L. 91-190); OMB Circulars A-133, A-87 and Executive Order 12378; Executive Order 1 1246 as amended (Equal Employment Opportunity) 41 CFR Part 60; Copeland Anti-Kickback Act (1 8 U.S. C. 874 DOL (29 CFR, Part 3); Clean Air Act of 1970 (construction contract of amounts in excess of \$10, 000); Nondiscrimination on the Basis of Handicap Section 504 Rehabilitation Act of 1973, DOI(43CFR, Part 17).

The State shall transfer to the participant or its fiscal agent all funds granted hereunder except that portion designated as state administrative cost and, as applicable, permanent acknowledgment sign, temporary sign, or review appraiser's fee, or all of them.

Since the burden and responsibility for financial administration of this program rests with the state, the participant or its fiscal agency agrees to refund to the state any funds disbursed to participant or its fiscal agent which are disallowed for elements of the project proposal on the same basis as required of the state by the federal government.

The project sponsor shall not at any time convert any property acquired or developed pursuant to this agreement to other than public outdoor recreation uses specified in the project proposal attached hereto without the prior approval of the Director, National Park Service.

In the event future support should not be forthcoming for subsequent phases or overruns, the participant agrees to bring the project to a state of usefulness so that funds invested shall not be lost. A determination of the state of usefulness will be the same basis as that required of the state by the federal government,

The participant agrees that complete plans and specifications will be submitted within four months of the date of approval on the federal level and that construction will begin on the site within six months of the grant approval and will demonstrate steady progress to project completion; the penalty for non-compliance will be withdrawal of the grant. It is agreed that billings will be submitted to the state within 45 days after completion of each element of work or payment on a contract expressing percentage of each element in accord with the project proposal. Further, the participant or its fiscal agent agrees to submit a final billing within 90 days after the end of the project period or completion of the project, whichever is sooner.

In witness whereof, the parties hereto have executed this agreement this 11 day of February
A.D. 2010

STATE OF LOUISIANA

POLITICAL SUBDIVISION

BY: Liaison Officer (or Alternate)

V.J. St. Pierre, Jr.
Parish President

2010-0113

INTRODUCED BY: DENNIS NUSS, COUNCILMAN, DISTRICT VII
CAROLYN K. SCHEXNAYDRE, COUNCILWOMAN-AT-LARGE, DIV. A
TERRY AUTHEMENT, COUNCILMAN-AT-LARGE, DIV. B
BILLY RAYMOND, SR., COUNCILMAN, DISTRICT I
SHELLEY M. TASTET, COUNCILMAN, DISTRICT II
WENDY BENEDETTO, COUNCILWOMAN, DISTRICT III
PAUL J. HOGAN, P.E., COUNCILMAN, DISTRICT IV
LARRY COCHRAN, COUNCILMAN, DISTRICT V
MARCUS M. LAMBERT, COUNCILMAN, DISTRICT VI

RESOLUTION NO. 5734

A resolution strongly requesting the Louisiana Department of Transportation and Development to expedite the repair of the expansion joints and bearing pads missing on the down ramp of I-310 to Highway 90 East and additional locations throughout the Parish.

WHEREAS, on November 24, 2009, a letter was sent to the DOTD requesting these repairs; and,

WHEREAS, on November 30, 2009, a letter was received from DOTD advising that this information had been forwarded to the Area Engineer, Mr. Chris Morvant for further handling; and,

WHEREAS, after receiving no further correspondence from the DOTD regarding the matter, the Council Secretary's Office called Mr. Chris Morvant for an update, being advised that placing asphalt over this was not the solution and that the road would have to be lifted which hopefully would be done within the next month; and,

WHEREAS, by February 23, 2010, repairs had not been made, nor any evidences that this would be corrected soon, the Council Secretary's Office called Mr. Morvant again and was advised that the statewide bridge maintenance crew was aware of the problem at this location and five additional locations within the Parish and that we were added to the list but a repair date had not been scheduled; and,

WHEREAS, it is imperative that this work be commenced without delay avoiding possible accidents and damage to vehicles.

NOW THEREFORE, BE IT RESOLVED, THAT WE, THE MEMBERS OF THE ST. CHARLES PARISH COUNCIL, do hereby strongly request the Louisiana Department of Transportation and Development to expedite the repair of the expansion joints and bearing pads missing on the down ramp of I-310 to Highway 90 East and additional locations throughout the Parish.

BE IT FURTHER RESOLVED, that a copy of this resolution be forwarded to Governor Bobby Jindal, Senator Joel T. Chaisson II, Representative Gary L. Smith, Jr., Louisiana Department of Transportation and Development Secretary William Ankner, Louisiana Department of Transportation and Development Traffic Operation Engineer Mr. Steve Strength, Louisiana Department of Transportation and Development District Administrator Michael Stack, and Louisiana Department of Transportation and Development Legislative Liaison Roy Quezaire.

The foregoing resolution having been submitted to a vote, the vote thereon was as follows:

YEAS: SCHEXNAYDRE, AUTHEMENT, RAYMOND, TASTET, BENEDETTO, HOGAN, COCHRAN, LAMBERT, NUSS

NAYS: NONE

ABSENT: NONE

And the resolution was declared adopted this 22nd day of March, 2010, to become effective five (5) days after publication in the Official Journal.

Revised: repair expansion joints I-310.doc

CHAIRMAN: Billy Raymond, Sr.

SECRETARY: Shelley M. Tastet

DLVD/PARISH PRESIDENT: March 23, 2010

APPROVED: ✓ DISAPPROVED: _____

PARISH PRESIDENT: Wark

RET/SECRETARY: March 24 2010

AT: 10:25 a.m. RECD BY: BGT