



Your Locally Owned Waste & Debris Partner



RiverBirch

Your Locally Owned Waste & Debris Partner



Solid Waste Collection Request for Proposal



River Birch Renewable Energy
2000 S Kenner Ave
Avondale, LA 70094





Proposer Qualifications

Experience

River Birch Renewable Energy, LLC

River Birch Renewable Energy Team is made up of Gus Bordelon, Luis Lizama, Jack Francioni, Robby Brewer, Tina Ruffin, Mike Ory, Gina Jones, Niki Cromer, and Mike Ortego. River Birch renewable Energy has over 100+ years combined experience in the Waste Management industry. Our management team has been involved in servicing over 15 municipalities throughout Southeast Louisiana as well as the City of Picayune. All of the contracts with these municipalities are similar in scope requiring garbage collection, bulky waste, recycling and disposal with estimated annual revenues over \$31 million. There were never any major or minor issues with any of these contracts.

River Birch Landfill

River Birch Landfill ownership and management team is made up of Mr. Albert J Ward, Frederick R. Heebe, Dominick J. Fazio, and Thomas Nicholson. River Birch Landfill has over 70 combined years in the Landfill business. River Birch Landfill began operations in 1999 and is primarily used for the disposal of residential, commercial, and industrial non-hazardous solid waste. The Landfill occupies 500 acres with 400 permitted as a Type I and II sanitary landfill under the authority of the Department of Environmental Quality. On the same site, the company operates two Class 1 non-hazardous Waste Injection Wells permitted by the Department of Natural Resources.

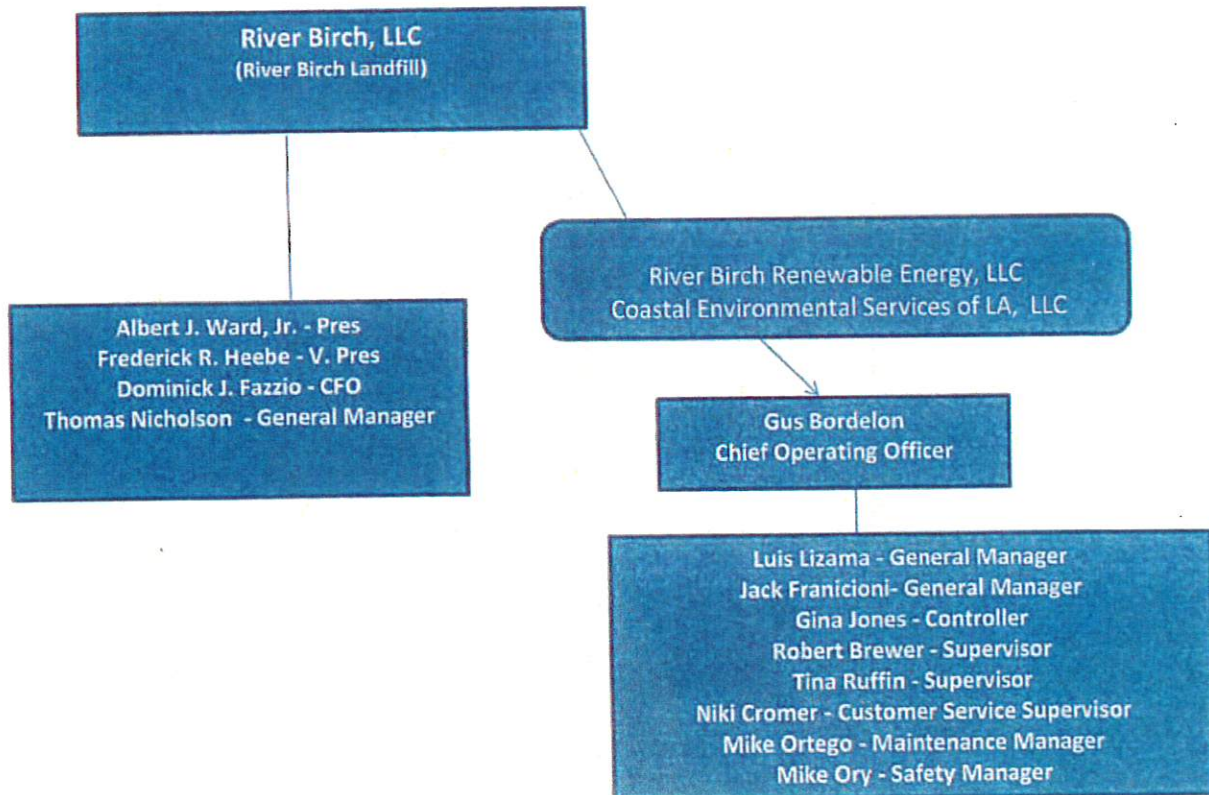
In 2010 the company became a High BTU facility in order to process the landfill gas into pipeline quality natural gas. This renewable natural gas is sold into the transportation sector, primarily in California. The company also operates a separate Construction and Demolition landfill that occupies 200 acres with 160 acres permitted as a Type III landfill under the authority of the Department of Environmental Quality. River Birch landfill is the largest landfill



in Louisiana and the 5th largest privately owned landfill in the country by volume. There are currently only 76 High BTU facilities operating through the US and the River Birch landfill is the 4th largest in the country by volume.

In 2020, River Birch, through its wholly owned subsidiary, Renewable Energy of Jefferson, LLC (REJ), acquired the contract to operate the Jefferson Parish Sanitary Landfill. Under the terms of the agreement, REJ began operations on 1/1/2021 and will continue operating for the next seven years. The Jefferson Parish Sanitary Landfill is 760 acres which was built in several phases. REJ is currently operating Phase 4A of the landfill but is responsible for the entire landfill. This landfill is the primary disposal site for the Municipal Solid Waste in all unincorporated Jefferson Parish.

River Birch Organizational Chart
2021





	DATE CONTRACT	DATE CONTRACT
MUNICIPAL DISPOSAL CONTRACTS	STARTED	EXPIRES

River Birch Landfill		
----------------------	--	--

St Charles Parish	1999	6/30/2024
City of New Orleans	2000	2/8/2025
Terrebone Parish	2004	7/31/2022
Lafourche Parish	2004	12/31/2024
St Bernard Parish	2007	9/1/2029
Town of Grand Isle	2008	4/1/2028
City of Kenner	2008	12/31/2022
St John Parish	2021	12/31/2030

	DATE CONTRACT	DATE CONTRACT	SERVICES	# OF HOMES	CONTACT	MAILING	TELEPHONE	EMAIL
MUNICIPAL HAULING CONTRACTS	STARTED	EXPIRES	PROVIDED	Population	SERVED	ADDRESS	NUMBER	ADDRESS

River Birch Renewable Energy, LLC								
-----------------------------------	--	--	--	--	--	--	--	--

Lafourche Parish	1/1/2020	12/31/2024	Collection and Disposal of Waste and Debris	97,614	35,197	Pres. Archie Chaisson	402 Green St Thibodaux, La 70301	975-446-8427	chaissonap@lafourche.gov
Jefferson Parish (West Bank)	8/1/2020	7/31/2024	Collection and Disposal of Waste and Debris	440,781	55,135	Pres. Cynthia Lee Sheng	1221 Elmwood Park Blvd #1002 Harahan, La 70123	504-736-6400	cleesheng@jeffparish.net

Coastal Environmental Services of LA, LLC								
---	--	--	--	--	--	--	--	--

City of Picayune, MS	9/1/2018	8/31/2022	Collection and Disposal of Waste, Recycling, Debris	10,878	4,250	Mayor Jim Luke	203 Goodyear Picayune, MS 39456	601-798-9770	citymanager@picayune.ms.us
Town of Abita Springs	9/1/2018	6/30/2022	Collection and Disposal of Waste, Recycling, Debris	2,365	1,187	Mayor Dan Curtis	22161 Level Street Abita Springs, La 70420	985-892-0711	dcurtis@abitaspringsla.gov
City of Mandeville	9/1/2018	6/30/2022	Collection and Disposal of Waste, Recycling, Debris	13,192	4,400	Mayor Clay Madden	3101 E Causeway Approach Mandeville, La 70448	985-626-3144	cmadden@cityofmandeville.com
City of Slidell	9/1/2018	6/30/2024	Collection and Disposal of Waste, Recycling, Debris	28,781	9,728	Mayor Greg Cromer	2055 Second Street Slidell, La 70460	985-646-4332	gcromer@cityofslidell.org
City of Covington	9/1/2018	7/1/2026	Collection and Disposal of Waste, Recycling, Debris	11,564	4,423	Mayor Mark Johnson	317 N Jefferson Ave, Covington, LA 70433	985-892-1811	mayomark@covla.com
St Tammany Parish Garbage District #1	2/1/2020	1/31/2025	Collection and Disposal of Waste, Recycling, Debris	2,344	2,344	Pres. Mike Cooper	21490 Koop Drive Mandeville, La 70471	985-898-2362	president@sttgv.org



Technical Capabilities

Operational Plan

River Birch Renewable Energy (RBRE) and Coastal Environmental Services of LA., LLC (CES) currently provide multiple collection services on the West Bank of unincorporated Jefferson Parish, the Town of Jean Lafitte, Lafourche Parish, City of Slidell, City of Mandeville, City of Covington, City of Picayune, Town of Abita Springs and St. Tammany Parish Garbage District #1. Both RBRE and CES have provided a high level of service while performing automated refuse collection, bulk, brush and white goods collection. RBRE is confident that this Operational Plan will allow for the continued high service levels that has become standard for all residents within our area. We feel that this comprehensive solid waste collection program will not only meet, but exceed the high expectations of the residents of St. Charles Parish.

Residential & Small Commercial Units Garbage

Automated Collection

Twice-per-Week Collection with cart:

RBRE will provide curbside collection of containerized solid waste from residential and small business units two times per week. The collection of bulky waste will be twice per month to all residential units within the Parish. Limited collection of tires, up to (4 per unit per week) and white goods (4 per unit per week) will also be provided to each residential unit.

RBRE will provide collection of solid waste from residential and small commercial units utilizing one existing 95-gallon refuse cart twice-per-week. The carts will be maintained and/ or replaced by RBRE as needed.

Personnel

RBRE will operate each route truck with one (1) DOT certified commercial driver. Personnel staffing, whether transferred from within the current staff or new hires recruited from the local area, will be required to meet all applicable DOT requirements including pre-employment physical and drug screens. Random alcohol and drug screens are completed in accordance



Personnel

RBRE will operate each route truck with one (1) DOT certified commercial driver. Personnel staffing, whether transferred from within the current staff or new hires recruited from the local area, will be required to meet all applicable DOT requirements including pre-employment physical and drug screens. Random alcohol and drug screens are completed in accordance with DOT requirements and company policy while employed with RBRE. Employment preference will be given to St Charles Parish residents whenever possible.

Equipment

Service will be provided utilizing 6 Automated Side Load (ASL) trucks. These trucks are fitted with an automated hydraulic side arm that picks-up and lifts the cart into the truck then dumps it. RBRE will also utilize 2 traditional REL trucks, 3 BOOM trucks and 1 cart delivery truck to provide the required service in St Charles Parish. This fleet of 12 trucks will be NEW and solely dedicated as specified in the RFP.

RBRE will use the existing routes to train drivers on the new automated trucks. Some of the current routes are in areas that are very similar to areas in St Charles Parish. This allows for a unique opportunity to prepare drivers for a very smooth startup and transition period. This will allow the operation to perform in a safe and efficient manner and ensure that each route is successful in completing all daily collections by 6:00 pm. RBRE will continually review equipment for new technology and future needs.

Bulky Waste Collection

RBRE will provide Bi-weekly bulky waste collection to all residents, including yard waste. Bulky collection will be performed utilizing 3 boom type trucks. Depending on the type and volume of waste a traditional rear loader may be used. This service will be performed on the residents designated collection day and in coordination with St Charles Parish. Although residents are not required to call for a pick-up, RBRE suggests that residents do so to accommodate efficient removal.



Disposal

All solid waste collected by RBRE shall be hauled to the River Birch Landfill or another site directed by the Parish. RBRE shall not be charged a disposal fee for this material.

Route maps for all the above services

RBRE will submit maps for the routes and will make every effort to maintain as currently designed so there would be no change from the current collection day schedule for all the residents. Sometimes additional routes may be added. Therefore, the time of collection during the day may change.

Vehicle Specifications for all services including curbside Recycle collection:

A list that includes all vehicles that will be used to perform the services detailed in this plan will be submitted before the contract start date. Changes in equipment will be communicated to St Charles Parish.

Operation Contingency Plan

To meet the anticipated service expectations of St Charles Parish, RBRE has accounted for spare trucks. To prevent service interruptions in the event of a mechanical failure, RBRE has also developed the following response system.

- Upon notification of mechanical failures or breakdowns from route personnel, dispatch will immediately notify a mechanic.
- Mechanic will respond within 30 minutes to diagnose mechanical failure and will contact dispatch if spare units are required.
- In the event a spare unit is required, the operations supervisor will act promptly in delivering vehicle to the route.
- In the event a route has been delayed, all route trucks completed will continue to support delayed route until route is complete.
- The customer service Manager will be notified and will then communicate the status to the concerned customers.



RBRE is committed to avoiding service disruptions and will provide the following actions in the event of street closures or blockage: In the event a street is temporarily blocked, the driver is responsible for reporting the situation immediately to dispatch and will return at the end of the route to service the street. In the event that a street is blocked for any extended period of time, RBRE will work with the Parish's Street department to identify the closest practical access point for collection.

Our goal is to provide a fast and friendly response to all residential customers through a fully integrated communication system.

Weather Delays

- During inclement weather, the Operations Manager and Supervisors will begin street patrols and route assessments.
- Operations Manager will start communicating to St Charles Parish Contract Monitor that he/she is monitoring the situation and will let the Parish know if routes are delayed.
- If the weather event occurs at the start of the workday the Operations Manager may, at his discretion, delay the routes to allow the weather to pass. The Operations Manager will notify the Contract Monitor immediately and will communicate throughout the day until all routes are completed.
- If for some reason the weather causes a cancellation of routes, the routes will be made up the following day.



Maintenance and Support Facilities

Equipment

River Birch Renewable Energy takes pride on the condition of our equipment. Our equipment and its maintenance are a direct reflection of our company as a TEAM. The key to this will be an aggressive wash program and having the very best Preventative Maintenance Program. We will utilize the following criteria for the best overall results that are necessary to providing the highest level of service in the industry:

- Our Preventative Maintenance Program is structured and scheduled by the operating hours of the equipment and is performed by our certified and highly trained maintenance team.
- River Birch Renewable Energy has a state-of-the-art facility in Jefferson Parish, specifically in Avondale, Louisiana
- Our maintenance team will be full time with 2 shifts for repairing trucks during the day and servicing the trucks at night.
- River Birch Renewable Energy will have one (1) full-service truck to handle road calls, as to prevent disruption of service.

In summary, each vehicle is serviced every 125 hours. Our drivers and mechanics check all trucks for leaks and safety defects daily.



Customer Service

At River Birch Renewable Energy, we understand the importance of Quality Customer Service. It is one of our greatest attributes. We feel this is what separates us from all the other companies in the industry. The customer is always FIRST. We will make the following commitments to St. Charles Parish.

- The customer is our greatest asset. Customers will always be dealt with in a courteous and professional manner.
- A local telephone number, set up specifically for St. Charles Parish, will be available to customers 24 hours a day.
- Service issues received by 2:00 pm will be addressed on the day received. All calls after 2:00 pm will be remedied no later than noon the next day.
- A log of service issues/concerns /questions including the disposition of each will be maintained and a copy provided to the Parish upon request.
- River Birch Renewable Energy pledges to be the very best corporate citizen to St. Charles Parish. RBRE will be involved in community events and organizations. Being involved enhances relationships with the community and other businesses throughout the Parish.
- River Birch Renewable Energy will maintain our fleet of trucks at all times to ensure the efficient, clean and safe delivery of services to St. Charles Parish.
- All employees of River Birch Renewable Energy will be in uniform at all times. After employment our employees will undergo intensive training relative to equipment operation, safety, and customer service.
- Our Management team and Owners will be available to respond to questions or service issues of elected official, and representatives of the Parish.

