



# RIVER PARISHES TRANSIT AUTHORITY

2015 REPORT TO  
ST. CHARLES PARISH COUNCIL

AUGUST 3, 2015

# GENERAL OPERATIONS & CAPITAL PROJECTS

- On-Demand service since February 2009
- Fare: \$2.00 one-way
- Service Hours: Monday – Saturday, 5:30am to 7:30pm
- Connecting Service:
  - St. James Parish Transit, JeT (Jefferson), and RTA (Orleans)
- Purchased five, 10 - 12 passenger vehicles in 2013 equipped with:
  - Security Cameras
  - Wheelchair Lift
  - Bicycle Rack

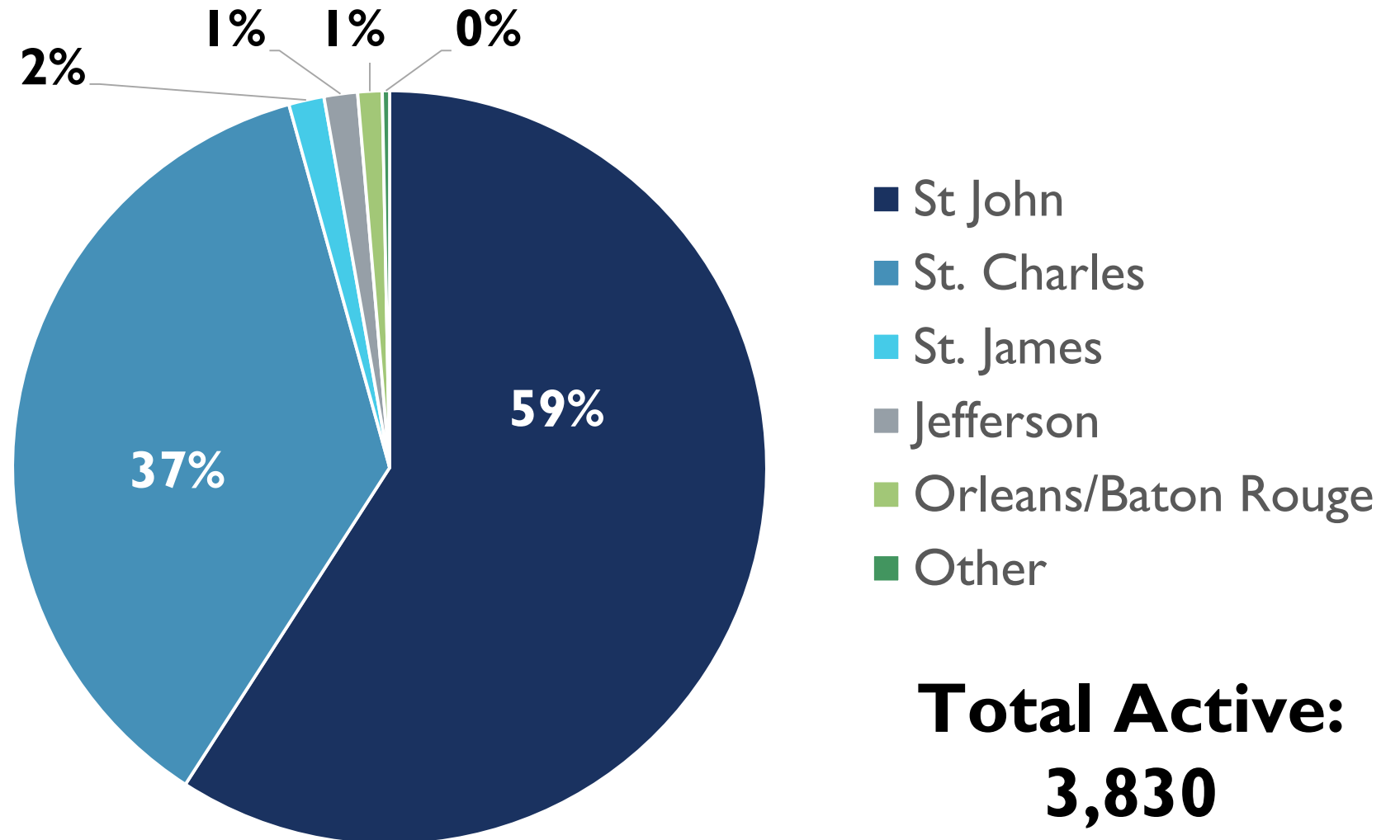


# RIDERSHIP

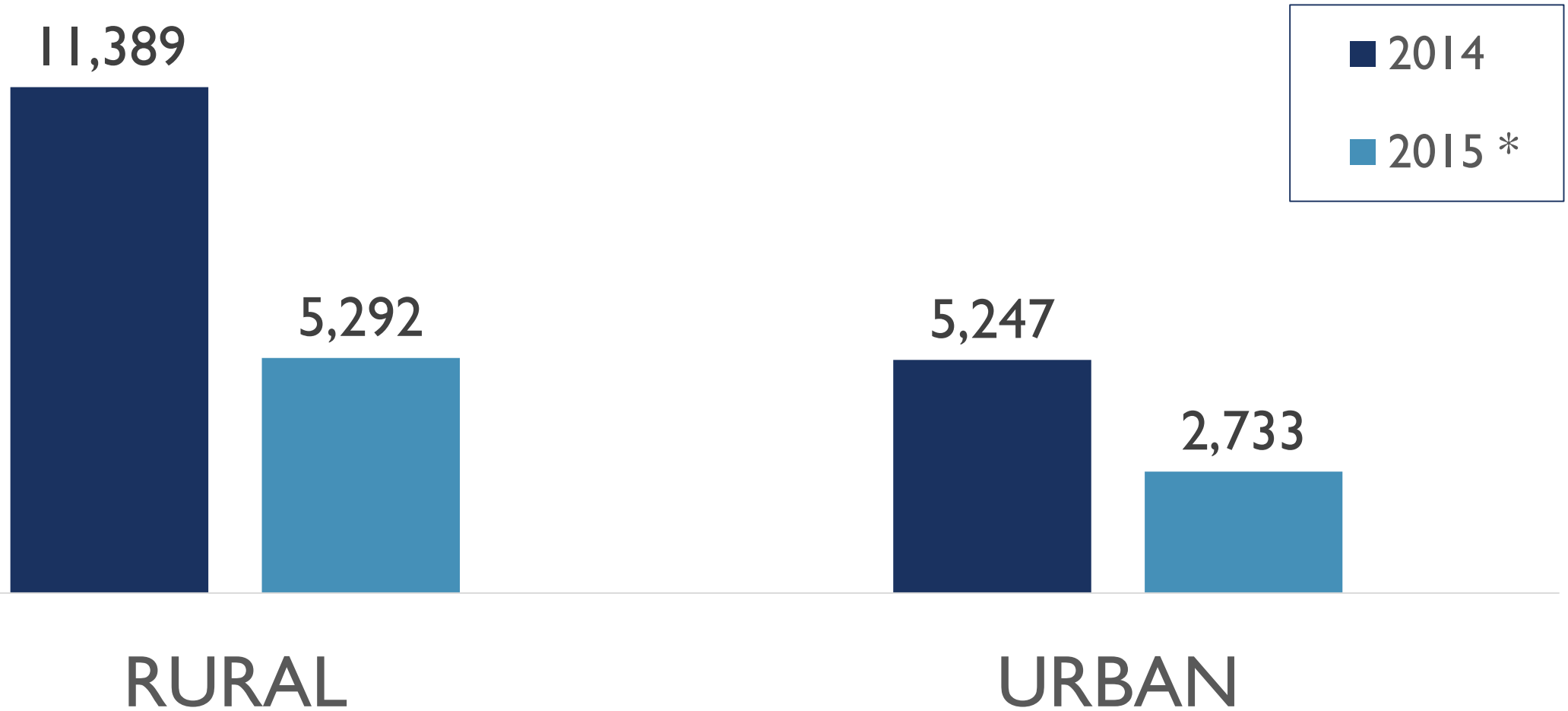
- Total Ridership:
  - 2014 Ridership 16,636
  - 2015 YTD as of June 30 is 8,425
  - 3 buses in service daily for a total 14 hours
- Saturday Service:
  - Began December 2013
  - 2 buses in service for a total 14 hours



# CLIENTS BY PARISH



# PROGRAM



*\*2015 ridership data through June 30, 2015*

# FUNDING SOURCES

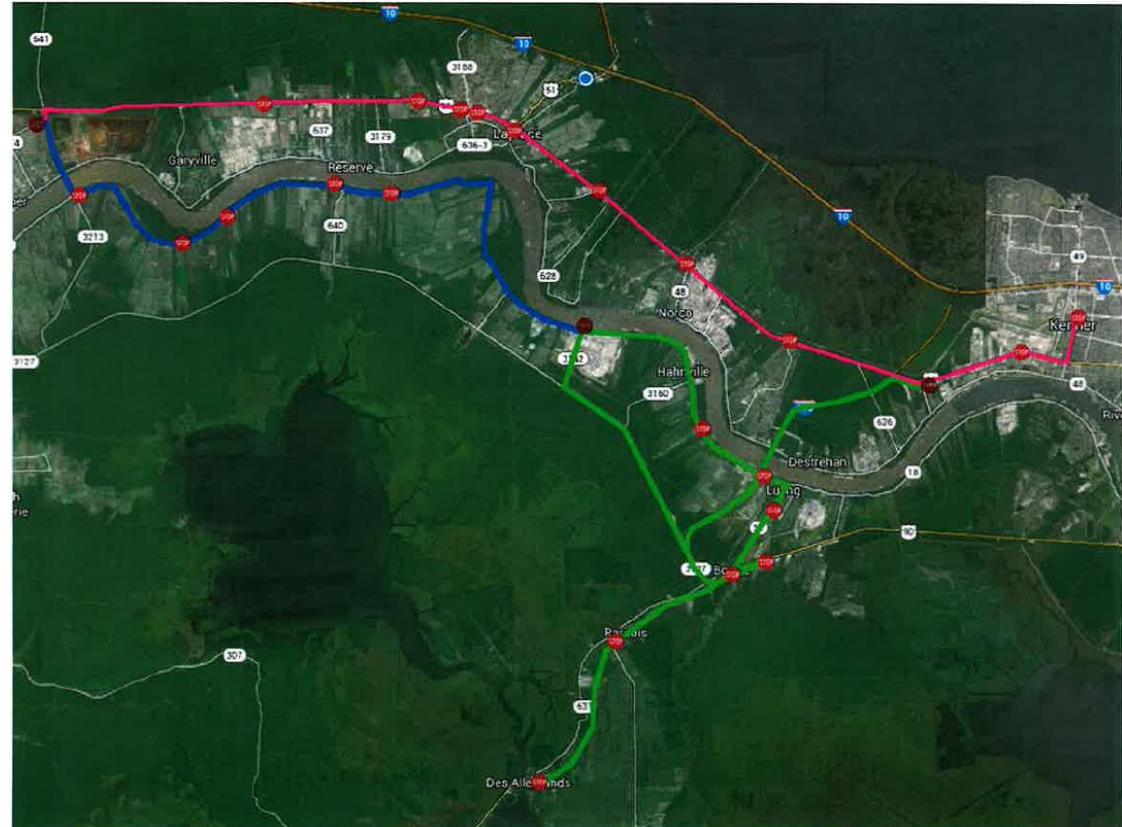
Grants	Farebox Revenue	Local Match
• Capital Improvements	• Recovery Rate 3.1 – 3.9%	• Estimated \$412,000 annually
• Preventive Maintenance	• General Funds	• State, St. John & St. Charles
• Operations		• Operations & Capital
• Saturday Urban Service*		
• Weekday & Saturday Rural		

- Current Average Monthly Trip Breakout: Rural (70%) & Urban (30%)
- Service Area now has a larger urban classification

\*No Weekday Urban Operations Funding



# FEASIBILITY OF A FIXED ROUTE SYSTEM



# ORGANIZATION

## RPTA Board Members

- St. Charles
  - Brent Petit, Chairman
  - Corey Fauchoux
- St. John
  - Helen Banquer, Vice Chairman
  - Angelic Keller
- St. James
  - Bedar Warren
  - Robbie LeBlanc
- At-Large
  - Richard Drexel

## Contracted Agencies

- Transdev – Operations Manager
  - GCR Inc. – Grant Management
- Solutient – Accounting & Oversight





# CONTACT

- **Robert Collins**

Operations Manager, Transdev

149 Woodland Drive

Laplace, LA 70068

(985) 651-1171

[robert.collins@veoliatransdev.com](mailto:robert.collins@veoliatransdev.com)

- **Brent Petit**

Board Chairman, RPTA

(225) 291-8226

[BPetit@usw.org](mailto:BPetit@usw.org)

