

**SECTION 00806**

**CHANGE ORDER**

No. 1

DATE OF ISSUANCE December 8, 2015

EFFECTIVE DATE \_\_\_\_\_

OWNER St. Charles Parish

CONTRACTOR Barriere Construction Co., L.L.C.

Contract: 2015 Road Maintenance Program

Project: Road Maintenance 2015

OWNER's Contract No. P111002-18 ENGINEER's Project No. 51.2060105.018

ENGINEER GEC, Inc.

You are directed to make the following changes in the Contract Documents:

**Description:** *See attached example on how to fill in this information*

1. Delete the Following Work Items:

- a. Base Bid Item #7: *Adjustment of Drainage Structures*  
Delete item in its entirety. (- \$300.00)
- b. Base Bid Item #9: *Relocation of Infrastructure Items*  
Delete item in its entirety. (- \$20,000.00)
- c. Base Bid Item #11: *Shoulder Material (Stone Fill)*  
Delete item in its entirety. (- \$10,011.75)
- d. Alternate Bid Item #7: *Adjustment of Drainage Structures*  
Delete item in its entirety. (- \$350.00)

Total of Deduction of Items = (- \$30,661.75)

2. Add the Following Work Items:

- a. Alternate Bid Item #13: *Additional Mobilization*  
Add Lump Sum item. (+ \$10,000.00)

Total of Addition of Items = (+ \$10,000.00)

3. Revise the Following Work Item Quantities:

- a. Base Bid Item #2: *2 - Inch Depth Cold Plane*  
The quantity is to be changed to 24,535.40 SY. (+ \$ 2,006.40)
- b. Base Bid Item #3: *2 - Inch Depth Asphaltic Wearing Course*  
The quantity is to be changed to 3,131.25 TON. (+ \$ 60,752.25)
- c. Base Bid Item #4: *6 - Inch Depth Asphalt Patching*  
The quantity is to be changed to 981.15 TON. (- \$ 5,050.50)

- d. Base Bid Item #5: *Reflectorized Raised Pavement Markers*  
The quantity is to be changed to 50 EACH. (+ \$ 162.00)
- e. Base Bid Item #6: *Adjustment of Manholes*  
The quantity is to be changed to 1 EACH. (- \$ 500.00)
- f. Base Bid Item #8: *Adjustment of Water Valves*  
The quantity is to be changed to 1 EACH (- \$ 175.00)
- g. Base Bid Item #10: *Shoulder Material (Earthen Fill)*  
The quantity is to be changed to 10,235 L.F. (+ \$ 6,093.90)
- h. Base Bid Item #12: *Shoulder Material (Reclaimed Material)*  
The quantity is to be changed to 2,005 L.F. (- \$ 5,574.00)
- i. Alternate Bid Item #2: *2 - Inch Depth Cold Plane*  
The quantity is to be changed to 34,475.4 S.Y. (+ \$ 6,571.40)
- j. Alternate Bid Item #3: *2 - Inch Depth Asphaltic Wearing Course*  
The quantity is to be changed to 4112.31 TON. (+ \$ 97,027.83)
- k. Alternate Bid Item #4: *6 - Inch Depth Asphalt Patching*  
The quantity is to be changed to 1884.02 TON. (- \$ 25,997.40)
- l. Alternate Bid Item #5: *Reflectorized Raised Pavement Markers*  
The quantity is to be changed to 71 EACH. (+ \$ 264.00)
- m. Alternate Bid Item #6: *Adjustment of Manholes*  
The quantity is to be changed to 6 EACH. (- \$ 100.00)
- n. Alternate Bid Item #8: *Adjustment of Water Valves*  
The quantity is to be changed to 4 EACH. (- \$ 105.00)
- o. Alternate Bid Item #9: *Shoulder Material (Earthen Fill)*  
The quantity is to be changed to 19,211 L.F. (+ \$ 16,968.15)
- p. Alternate Bid Item #10: *Shoulder Material (Stone Fill)*  
The quantity is to be changed to 595 L.F. (- \$ 10,582.25)
- q. Alternate Bid Item #11: *Shoulder Material (Reclaimed Material)*  
The quantity is to be changed to 300 L.F. (- \$ 9,513.00)

Total of Change in Work Items Quantity = (+ \$ 132,248.78)

**Reason for Change Order:**

- 1. Deleted Work Items
  - a. The Adjustment of Drainage Structures (base bid) item was estimated on the total length of the project prior to bid, but was not required during construction.
  - b. The Relocation of Infrastructure (base bid) item was included to relocate utility structures should they have been found during construction. There were no utility structures found, therefore this item was not required.

- c. The Stone Fill Shoulder Material (base bid) item was estimated on the total length of the project prior to bid, but was not required during construction. The earthen fill shoulder material was used in most of the areas where this item was estimated to have been used.
  - d. The Adjustment of Drainage Structures (alternate bid) item was estimated on the total length of the project prior to bid, but was not required during construction.
2. Add Work Items
- a. Additional cold plane and overlay work on Sixth St. was requested by the Parish after all cold plane and overlay operations had been completed for this program. The addition of another mobilization item in the amount of \$10,000.00 was included to bring the equipment back to Sixth St. to do this work.
3. Revise Work Item Quantities
- a. There was an additional 2,006.40 square yards of cold planing that took place under the base bid. This 9% overrun is due to the additional 2,416 square yards of work that took place on James Drives East & West, next to the Bunge plant, per the Parish's request.
  - b. The wearing course increase of 653.25 tons is due to the work next to the Bunge plant as mentioned in section 3a. The estimated quantity from James Dr. is 733.46 tons, which brings the quantity above what was originally estimated.
  - c. The removal of 38.85 tons for 6 inch patching is a result of the construction quantity differing by 4% of the estimated quantity.
  - d. The reflectorized raised pavement markers were estimated on total length of project prior to bid, but quantities from construction required this item to be increased by 27. These markers are placed to show the location of fire hydrants along a street. Where a hydrant is located on the corner of a street within this program, markers were also added to the nearby intersecting street, even though that street may not be in this program. This was done for the benefit, safety, and welfare of the general public.
  - e. The adjustment of manholes was estimated on total length of project prior to bid, but quantities from construction resulted in a decrease of 1 manhole adjustment.
  - f. The adjustment of water valves was estimated on total length of project prior to bid, but quantities from construction resulted in a decrease of 5 water valve adjustments.
  - g. Of all 3 shoulder material contract items, the earthen material was almost exclusively used for streets that fell under the base bid. The estimated quantities for the 3 different shoulder materials were broken down evenly for each of the items; the stone item was not used and the reclaimed asphalt was only used on James Dr. for the base bid.
  - h. There was an additional 6,571.40 square yards of cold planing that took place under the Alternate 1 bid streets. The majority of this overrun is due to the additional work requested by the Parish on Sixth St., which resulted in 6,570.5 square yards of cold planing. The added quantity is a 24% increase.
  - i. The wearing course increase of 1,043.31 tons has multiple reasons for being increased. As stated in 3h above, the majority of this overrun is due to the additional work requested by the Parish on Sixth St., which resulted in 762.43 additional tons of wearing course. Approximately 83 tons were placed on Loupe St., which was also additional work added to this program per the request of the Parish. The remaining overrun quantities are due to the bid quantities being estimated prior to construction and added quantity to assist in drainage, especially at cul-de-sacs.

- j. The removal of 199.98 tons for 6 inch patching is a result of the construction quantity differing by 10% of the estimated quantity.
- k. Similar to 3d above, the reflectorized raised pavement markers were estimated on total length of project prior to bid, but quantities from construction required this item to be increased by 71. Markers were added to intersecting streets, even though that street may not be in this program, where a hydrant is located on the corner of a street in this program.
- l. The adjustment of manholes was estimated on total length of project prior to bid, but quantities from construction resulted in a decrease of 1 manhole adjustment.
- m. The adjustment of water valves was estimated on total length of project prior to bid, but quantities from construction resulted in a decrease of 3 manholes.
- n. As mentioned above in 3g, the earthen material was almost exclusively used in this project. The estimated quantities for the 3 different shoulder materials were broken down evenly for each of the items; earthen material was used in many places where the other shoulder materials were estimated to being used. Although there is an increase of 19,211 LF of this item, the stone material and RAP material items are decreased significantly.
- o. Only Loupe St. used stone as a shoulder material. The total amount used is 595 LF, or 9% of what was estimated for the Alternate 1 bid.
- p. Reclaimed Asphalt Pavement material was only used on Julia St. as shoulder material. The total amount used is 300 LF, or 5% of what was estimated for the Alternate 1 bid.

**Attachments:**

Executed Work Directive 1 for additional work on Loupe St. (addition of contract time included)  
Executed Work Directive 2 for additional work on James Dr. East and West (addition of contract time included)  
Executed Work Directive 3 for additional work on Sixth St. (addition of contract time included)

CHANGE IN CONTRACT PRICE:
Original Contract Price \$ <u>1,311,898.80</u>
Net Increase (Decrease) from previous Change Orders No. <u>-</u> to <u>-</u> : \$ <u>0.00</u>
Contract Price prior to this Change Order: \$ <u>1,311,898.80</u>
Net increase of this Change Order: \$ <u>111,587.03</u>
Contract Price with all approved Change Orders: \$ <u>1,423,485.83</u>

CHANGE IN CONTRACT TIMES:
Original Contract Time: Notice to Proceed: <u>  </u> September 8, 2015 Final Completion Date: <u>  </u> December 7, 2015 (90 Days)
Net change from previous Change Orders: (N/A) Notice to Proceed: <u>  </u> September 8, 2015 Final Completion Date: <u>  </u> December 7, 2015
Contract Time increased by this Change Order: Original Final Completion Date: <u>  </u> December 7, 2015 Revised Final Completion Date: <u>  </u> December 18, 2015 (11 Days)
Net increase for this Change Order: Revised Final Completion Date: <u>  </u> December 18, 2015 Substantial Completion: <u>  </u> November 23, 2015 (-25 days)
Contract Times with all approved Change Orders: Notice to Proceed: <u>  </u> September 8, 2015 Substantial Completion: <u>  </u> November 23, 2015 (77 days)

RECOMMENDED:

By: *Lid Jonard*  
ENGINEER (Authorized Signature)

Date: 12/17/15

APPROVED:

By: \_\_\_\_\_  
OWNER (Authorized Signature)

Date: \_\_\_\_\_

ACCEPTED:

By: *Alma Ernesto*  
CONTRACTOR (Authorized Signature)

Date: 12/17/2015



# ST. CHARLES PARISH

*DEPARTMENT OF PUBLIC WORKS*

100 RIVER OAKS DRIVE • DESTREHAN, LOUISIANA 70047

(985) 783-5102 • (985) 783-5104 • FAX (985) 725-2250

Website: [www.stcharlesparish-la.gov](http://www.stcharlesparish-la.gov)

V.J. ST. PIERRE, JR.  
PARISH PRESIDENT

SAM SCHOLLE  
DIRECTOR

October 22, 2015

Sid Trouard, P.E., Vice President  
GEC, Inc.  
3445 North Causeway Boulevard, Suite 401  
Metairie, LA 70002

SUBJECT: Work Directives No. 1 and No. 2  
Road Maintenance 2015  
St. Charles Parish Project No. P111002-18

Dear Mr. Trouard:

Please find enclosed executed Work Directives No. 1 and No. 2 for the referenced project. Should you have any questions or require additional information, please let me know.

Sincerely,

Ruby E. Dennis  
Administrative Assistant

RED

Enclosures

RECEIVED  
OCT 26 2015  
METAIRIE OFFICE

**SECTION 00805**

**WORK CHANGE DIRECTIVE**

No. 1

DATE OF ISSUANCE October 19, 2015 EFFECTIVE DATE September 29, 2015

Owner: St. Charles Parish  
Contractor: Barriere Construction Co., L.L.C.  
Contract: 2015 Road Maintenance Program  
Project: Road Maintenance 2015  
Owner's Contract No.: P111002-18 Engineer's Contract No.: 51.2060105.018  
ENGINEER: GEC, Inc.

Contractor is directed to proceed promptly with the following change(s):

Description: Overlay Loupe St. with 3" of asphalt overlay at a constant width of 16' over the entire length of the shell roadway. The driveway tie-in will have an asphalt base. Shoulder material will be placed to remove the drop off along the edge of the roadway.

Attachments: (List documents supporting change) *List of supporting documents.*

1. September 14, 2015 email from Dawn D'Angelo (Barriere Project Manager) accepting the addition of Loupe St. to the 2015 Road Maintenance Program.
2. September 29, 2015 email from Gavin Gillen (GEC Engineer) with attached Engineer's Opinion of Probable Construction Cost and limits.
3. September 29, 2015 email from Lee Zeringue (SCP Engineer) verifying that the project is acceptable.
4. October 12, 2015 email from Lee Zeringue (SCP Engineer) directing GEC to generate a Work Change Order for Loupe.

**Purpose for Work Change Directive:**

Directive to proceed promptly with the Work described herein, prior to agreeing to changes on Contract Price and Contract Time, is issued due to: *(check one)*

- Non-agreement on pricing of proposed change.
- Necessity to proceed for schedule or other project reasons.

**Estimated Change in Contract Price and Contract Times (non-binding, preliminary):**

Contract Price: \$ 9,096.30 [increase]  
Contract Time 2 days [increase]

**Basis of estimated change in Contract Price:**

- Lump Sum
- Unit Price
- Cost of the Work
- Other

Recommended:	Limited Authorization By*:	Received:
By: <u>    <i>S. Howard</i>    </u>	By: <u>    <i>Sam Belle</i>    </u>	By: <u>    <i>Dawn Orzelle</i>    </u>
Engineer (Authorized Signature)	Owner's Representative*	Contractor (Authorized Signature)
Title: <u>    Vice President    </u>	Title: <u>    <i>Director PWBWW</i>    </u>	Title: <u>    <i>St. Project Manager</i>    </u>
Date: <u>    10/21/15    </u>	Date: <u>    10-22-15    </u>	Date: <u>    10/21/2015    </u>

\*Owner's Representative is not authorized to finalize a Change Order nor does the Work Change Directive substitute the Change Order process as more fully set out in the General Conditions of the Construction Contract.

Approved by Funding Agency (if applicable)

By: \_\_\_\_\_ Date: \_\_\_\_\_  
 Title: \_\_\_\_\_



## Gavin Gillen

---

**From:** Dawn D'Angelo <DawnD@Barriere.com>  
**Sent:** Monday, September 14, 2015 3:44 PM  
**To:** Gavin Gillen  
**Cc:** Frank Wiley; lzingue@stcharlesgov.net  
**Subject:** Re: Loupe St. and sign locations

Looks like we can catch it as we go.

Sent from my iPhone

On Sep 14, 2015, at 1:24 PM, Gavin Gillen <[ggillen@gecinc.com](mailto:ggillen@gecinc.com)<<mailto:ggillen@gecinc.com>>> wrote:

Hey Dawn,

Would Barriere be able to do a 3" overlay on Loupe St. in Luling if the Parish adds it into the current Road Maintenance Program? This roadway intersects River Road, and is just east of Sugarhouse Road. Loupe somewhat falls between 2 roads that are part of the 2015 Rd. Maintenance Program: Seymore (off of Easy St./Paul Mallard) and Badalementi.

The end of the roadway has 610 limestone, so we need to overlay that portion. Instead of doing 2", we will do 3" so there will be a layer we can take off in a future road maintenance program. I think y'all can do this job in 1 day, but will give 2 calendar days just to be safe. We are looking at about 100 tons of asphalt to be used, with a crown in the middle to let runoff enter the ditches on both sides of the road.

I spoke with Lee on Thursday about sign locations. Please place a sign on Goodhope on the east bank and on the corner of St. Maria and Oak Ln. on the west bank (pointed towards US 90, so cars coming off 90 can see it).

Gavin D. Gillen, P.E. | Project Manager  
G.E.C., Inc.

Office: (504) 838-6009 | Cell Phone: (504) 237-9697 | Fax: (504) 218-7229

Email: [GGillen@gecinc.com](mailto:GGillen@gecinc.com)<<mailto:GGillen@gecinc.com>>

3445 N. Causeway Blvd., Suite 401

Metairie, LA 70002

Toll Free: (877) 374-2912

PRIVILEGED AND CONFIDENTIAL COMMUNICATION: DO NOT read, copy or disseminate this communication unless you are the intended recipient. This entire e-mail transmission contains information that belongs to the sender, and which may be privileged, confidential and exempt from disclosure under applicable state and federal privacy and/or disclosure laws. The information is intended solely for the addressee(s) named above. If you are not the named addressee, you are hereby notified that any disclosure, copying, distribution or the taking of any action in reliance on the contents of this transmission is strictly prohibited. If you have received this transmission in error, please notify us immediately in order to arrange for the return of the document. While G.E.C., Inc. believes this transmittal to be free of virus or other defect, it is the responsibility of the recipient to ensure that it is virus free and no responsibility is accepted by G.E.C., Inc. (or its subsidiaries and affiliates) for any loss or damage arising therefrom.

The information in this email and in any attachments is confidential and may be privileged. If you are not the intended recipient, please destroy this message, delete any copies on your systems and notify the sender immediately. You should not retain, copy, or use this email for any purpose, nor disclose all or any part of its content to any other person.

## Gavin Gillen

---

**From:** Gavin Gillen  
**Sent:** Tuesday, September 29, 2015 2:05 PM  
**To:** 'Sam Scholle'; Lee Zeringue  
**Cc:** Sid Trouard; Bobby Donaldson  
**Subject:** RE: Loupe St. and sign locations  
**Attachments:** 20150929 Loupe St.pdf

Tracking:	Recipient	Read
	'Sam Scholle'	
	Lee Zeringue	
	Sid Trouard	Read: 9/29/2015 2:06 PM
	Bobby Donaldson	

Gentlemen,

Lee Zeringue and I met on Loupe St. yesterday afternoon to review the roadway's issues. It was determined that the road should be kept at a constant width of approximately 16', which would be on top of the shell base. Because of this width and not requiring additional aggregate for base, we were able to keep the cost under \$10,000.

Mobilization is not included since this will be part of the 2015 Road Maintenance Program.

Attached is the cost breakdown to do this work.

**Gavin D. Gillen, P.E.** | Project Manager  
G.E.C., Inc.  
Office: (504) 838-6009 | Cell Phone: (504) 237-9697 | Fax: (504) 218-7229  
Email: [GGillen@gecinc.com](mailto:GGillen@gecinc.com)

PRIVILEGED AND CONFIDENTIAL COMMUNICATION: DO NOT read, copy or disseminate this communication unless you are the intended recipient. This entire e-mail transmission contains information that belongs to the sender, and which may be privileged, confidential and exempt from disclosure under applicable state and federal privacy and/or disclosure laws. The information is intended solely for the addressee(s) named above. If you are not the named addressee, you are hereby notified that any disclosure, copying, distribution or the taking of any action in reliance on the contents of this transmission is strictly prohibited. If you have received this transmission in error, please notify us immediately in order to arrange for the return of the document. While G.E.C., Inc. believes this transmittal to be free of virus or other defect, it is the responsibility of the recipient to ensure that it is virus free and no responsibility is accepted by G.E.C., Inc. (or its subsidiaries and affiliates) for any loss or damage arising therefrom.

---

**From:** Sam Scholle [<mailto:sscholle@stcharlesgov.net>]  
**Sent:** Thursday, September 17, 2015 3:35 PM  
**To:** Gavin Gillen; Lee Zeringue  
**Cc:** Sid Trouard; Bobby Donaldson  
**Subject:** RE: Loupe St. and sign locations

Please look at the road once more. I need to keep this under \$10,000.

I need to go back to VJ if the cost is higher.

Sam

St. Charles Parish  
Dept. of Public Works/Wastewater  
Sam Scholle  
Director

**From:** Gavin Gillen [<mailto:ggillen@gecinc.com>]  
**Sent:** Thursday, September 17, 2015 1:50 PM  
**To:** Sam Scholle; Lee Zeringue  
**Cc:** Sid Trouard  
**Subject:** RE: Loupe St. and sign locations

The overlay of 3" will be \$9,200.

If we need to add crushed stone, I approximate the cost for that stone to be around \$2,500. Barriere already gave me the unit cost for the stone to be \$70/ton. The my estimate is for adding 5" of stone in a width of 6' for a length of 270', and the stone weighing 1.17 tons/cubic foot. A 20% factor was included for compaction.

I will discuss this with Lee on Monday as to whether or not this needs stone.

**Gavin D. Gillen, P.E.** | Project Manager  
G.E.C., Inc.  
Office: (504) 838-6009 | Cell Phone: (504) 237-9697 | Fax: (504) 218-7229  
Email: [GGillen@gecinc.com](mailto:GGillen@gecinc.com)

PRIVILEGED AND CONFIDENTIAL COMMUNICATION: DO NOT read, copy or disseminate this communication unless you are the intended recipient. This entire e-mail transmission contains information that belongs to the sender, and which may be privileged, confidential and exempt from disclosure under applicable state and federal privacy and/or disclosure laws. The information is intended solely for the addressee(s) named above. If you are not the named addressee, you are hereby notified that any disclosure, copying, distribution or the taking of any action in reliance on the contents of this transmission is strictly prohibited. If you have received this transmission in error, please notify us immediately in order to arrange for the return of the document. While G.E.C., Inc. believes this transmittal to be free of virus or other defect, it is the responsibility of the recipient to ensure that it is virus free and no responsibility is accepted by G.E.C., Inc. (or its subsidiaries and affiliates) for any loss or damage arising therefrom.

---

**From:** Sam Scholle [<mailto:sscholle@stcharlesgov.net>]  
**Sent:** Thursday, September 17, 2015 1:05 PM  
**To:** Gavin Gillen; Lee Zeringue  
**Cc:** Sid Trouard  
**Subject:** RE: Loupe St. and sign locations

Please verify price. Hopefully it will be under \$10K?

St. Charles Parish  
Dept. of Public Works/Wastewater  
Sam Scholle  
Director  
100 River Oaks Drive  
Destrehan, La 70047

---

**From:** Gavin Gillen [<mailto:ggillen@gecinc.com>]  
**Sent:** Thursday, September 17, 2015 1:01 PM  
**To:** Lee Zeringue; Sam Scholle  
**Cc:** Sid Trouard  
**Subject:** Fwd: Loupe St. and sign locations

Gentlemen,

The email below is from Monday. This was the last we discussed Loupe. I will be in the Parish on Monday for a meeting with Lee.

I think we have time before paving starts.

Sent from my mobile device

Begin forwarded message:

**From:** Lee Zeringue <[lzingue@stcharlesgov.net](mailto:lzingue@stcharlesgov.net)>  
**Date:** September 14, 2015 at 4:43:10 PM CDT  
**To:** Frank Wiley <[fwiley@gecinc.com](mailto:fwiley@gecinc.com)>, Gavin Gillen <[ggillen@gecinc.com](mailto:ggillen@gecinc.com)>, "Dawn D'Angelo" <[DawnD@Barriere.com](mailto:DawnD@Barriere.com)>  
**Subject:** RE: Loupe St. and sign locations

If the base is wide enough then yes; otherwise we can talk about it when you are in the area Gavin. I am assuming paving won't be a at least a couple more weeks?

Lawrence "Lee" Zeringue, PE  
Senior Parish Engineer  
St. Charles Parish Dept of Public Works/Wastewater

---

**From:** Frank Wiley [<mailto:fwiley@gecinc.com>]  
**Sent:** Monday, September 14, 2015 3:52 PM  
**To:** Gavin Gillen; Dawn D'Angelo  
**Cc:** Lee Zeringue  
**Subject:** RE: Loupe St. and sign locations

Gavin:

Just checking - we want to match width with the existing paved section of Loupe St.?

Frank

Sent from my Verizon Wireless 4G LTE smartphone

----- Original message -----

**From:** Gavin Gillen <[ggillen@gecinc.com](mailto:ggillen@gecinc.com)>  
**Date:** 09/14/2015 3:44 PM (GMT-06:00)  
**To:** Dawn D'Angelo <[DawnD@Barriere.com](mailto:DawnD@Barriere.com)>  
**Cc:** Frank Wiley <[fwiley@gecinc.com](mailto:fwiley@gecinc.com)>, [lzingue@stcharlesgov.net](mailto:lzingue@stcharlesgov.net)  
**Subject:** RE: Loupe St. and sign locations

Great, thanks!!!

Gavin D. Gillen, P.E. | Project Manager  
G.E.C., Inc.  
Office: (504) 838-6009 | Cell Phone: (504) 237-9697 | Fax: (504) 218-7229  
Email: [GGillen@gecinc.com](mailto:GGillen@gecinc.com)

PRIVILEGED AND CONFIDENTIAL COMMUNICATION: DO NOT read, copy or disseminate this communication unless you are the intended recipient. This entire e-mail transmission contains information that belongs to the sender, and which may be privileged, confidential and exempt from disclosure under applicable state and federal privacy and/or disclosure laws. The information is intended solely for the addressee(s) named above. If you are not the named addressee, you are hereby notified that any disclosure, copying, distribution or the taking of any action in reliance on the contents of this transmission is strictly prohibited. If you have received this transmission in error, please notify us immediately in order to arrange for the return of the document. While G.E.C., Inc. believes this transmittal to be free of virus or other defect, it is the responsibility of the recipient to ensure that it is virus free and no responsibility is accepted by G.E.C., Inc. (or its subsidiaries and affiliates) for any loss or damage arising therefrom.

-----Original Message-----

From: Dawn D'Angelo [<mailto:DawnD@Barriere.com>]  
Sent: Monday, September 14, 2015 3:44 PM  
To: Gavin Gillen  
Cc: Frank Wiley; [lzeringue@stcharlesgov.net](mailto:lzeringue@stcharlesgov.net)  
Subject: Re: Loupe St. and sign locations

Looks like we can catch it as we go.

Sent from my iPhone

On Sep 14, 2015, at 1:24 PM, Gavin Gillen  
<[ggillen@gecinc.com](mailto:ggillen@gecinc.com)<<mailto:ggillen@gecinc.com>>> wrote:

Hey Dawn,

Would Barriere be able to do a 3" overlay on Loupe St. in Luling if the Parish adds it into the current Road Maintenance Program? This roadway intersects River Road, and is just east of Sugarhouse Road. Loupe somewhat falls between 2 roads that are part of the 2015 Rd. Maintenance Program: Seymore (off of Easy St./Paul Mallard) and Badamenti.

The end of the roadway has 610 limestone, so we need to overlay that portion. Instead of doing 2", we will do 3" so there will be a layer we can take off in a future road maintenance program. I think y'all can do this job in 1 day, but will give 2 calendar days just to be safe. We are looking at about 100 tons of asphalt to be used, with a crown in the middle to let runoff enter the ditches on both sides of the road.

I spoke with Lee on Thursday about sign locations. Please place a sign on Goodhope on the east bank and on the corner of St. Maria and Oak Ln. on the west bank (pointed towards US 90, so cars coming off 90 can see it).

Gavin D. Gillen, P.E. | Project Manager  
G.E.C., Inc.  
Office: (504) 838-6009 | Cell Phone: (504) 237-9697 | Fax: (504) 218-7229  
Email: [GGillen@gecinc.com](mailto:GGillen@gecinc.com)<<mailto:GGillen@gecinc.com>>  
3445 N. Causeway Blvd., Suite 401  
Metairie, LA 70002

Toll Free: (877) 374-2912

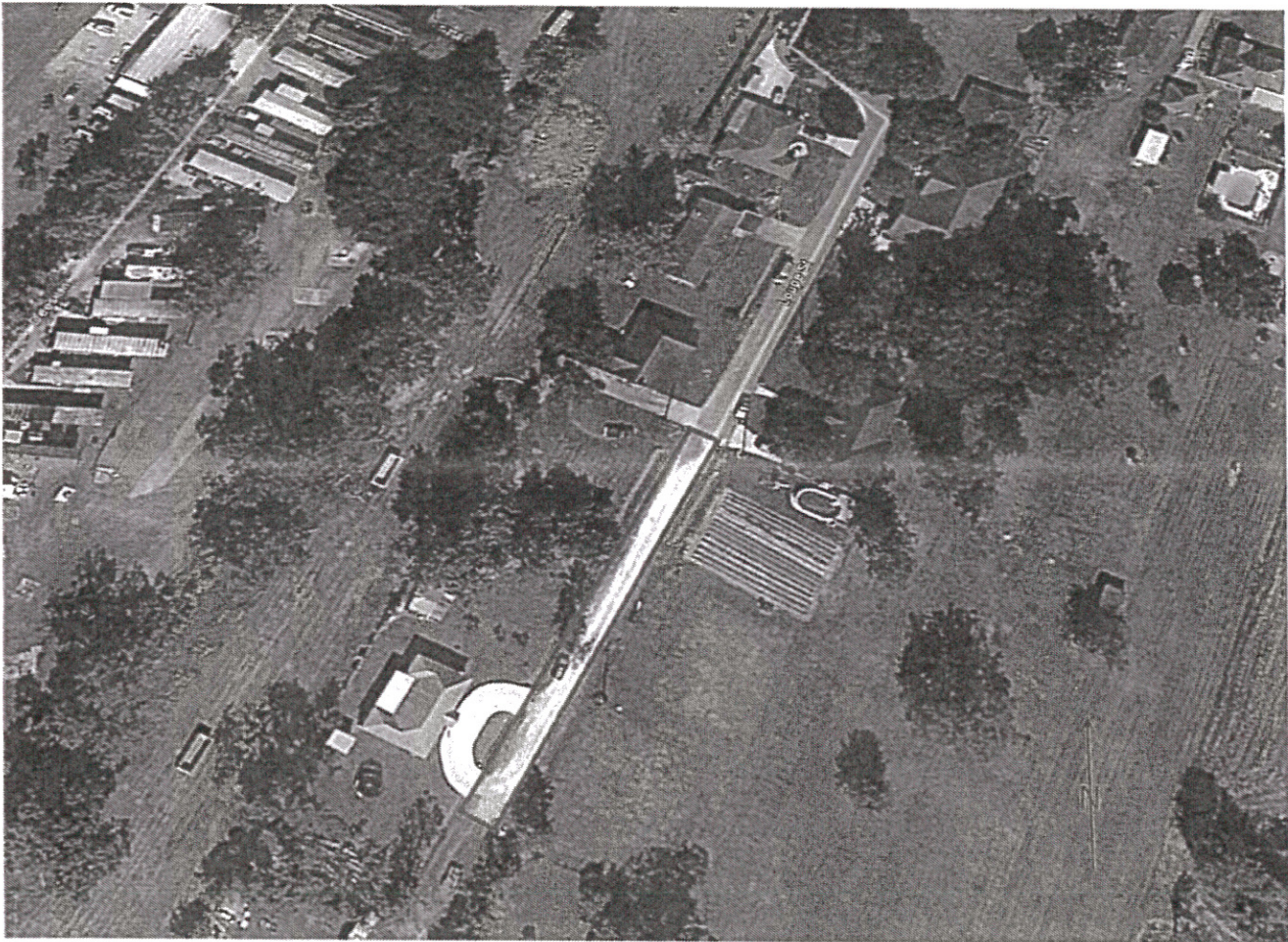
PRIVILEGED AND CONFIDENTIAL COMMUNICATION: DO NOT read, copy or disseminate this communication unless you are the intended recipient. This entire e-mail transmission contains information that belongs to the sender, and which may be privileged, confidential and exempt from disclosure under applicable state and federal privacy and/or disclosure laws. The information is intended solely for the addressee(s) named above. If you are not the named addressee, you are hereby notified that any disclosure, copying, distribution or the taking of any action in reliance on the contents of this transmission is strictly prohibited. If you have received this transmission in error, please notify us immediately in order to arrange for the return of the document. While G.E.C., Inc. believes this transmittal to be free of virus or other defect, it is the responsibility of the recipient to ensure that it is virus free and no responsibility is accepted by G.E.C., Inc. (or its subsidiaries and affiliates) for any loss or damage arising therefrom.

The information in this email and in any attachments is confidential and may be privileged. If you are not the intended recipient, please destroy this message, delete any copies on your systems and notify the sender immediately. You should not retain, copy, or use this email for any purpose, nor disclose all or any part of its content to any other person.

St. Charles Parish  
Department of Public Works  
Loupe St  
Opinion of Probable Cost  
Prepared by GEC, Inc.  
July 14, 2015

Item	Description	Unit	Quantity	Unit Cost	Cost
1	Asphalt - 3" Overlay of shell portion	TONS	90	\$ 93.00	\$ 8,370.00
2	Shoulder Material (Earthen Fill)	LF	538	\$ 1.35	\$ 726.30
Opinion of Probable Construction Cost Total:					\$ 9,096

Notes: The unit costs are based upon the 2015 Road Maintenance Project.  
All quantities are based upon the Standard Parish Cross Section.  
Asphalt will be used as a base to tie-in driveway  
The roadway will have a consistent width throughout this entire area



Roadway Characteristics		
Length	269	ft.
Width	16	ft.
Area	4304	ft <sup>2</sup>
Area	478	yd <sup>2</sup>



## Gavin Gillen

---

**From:** Lee Zeringue <lzeringue@stcharlesgov.net>  
**Sent:** Monday, October 12, 2015 2:39 PM  
**To:** Gavin Gillen  
**Cc:** Sid Trouard; Sam Scholle  
**Subject:** Road maint 2015

Gavin;

I have received word from Sam; we are good to go with James Dr West. Barriere can perform he work as scheduled. We need to get the Change order Directive done up for this and for Loupe as soon as possible.

Lawrence "Lee" Zeringue, PE  
Senior Parish Engineer  
St. Charles Parish Dept of Public Works/Wastewater

## Gavin Gillen

---

**From:** Lee Zeringue <lzeringue@stcharlesgov.net>  
**Sent:** Tuesday, September 29, 2015 3:45 PM  
**To:** Gavin Gillen; Sam Scholle  
**Cc:** Sid Trouard; Bobby Donaldson  
**Subject:** RE: Loupe St. and sign locations

We have Loupe straight. We will still information on James Drive (aka Bungee) as to what VJ agreed to Bungee so that I can get a quote from Barriere and they know what is expected from them.

Lawrence "Lee" Zeringue, PE  
Senior Parish Engineer  
St. Charles Parish Dept of Public Works/Wastewater

---

**From:** Gavin Gillen [mailto:ggillen@gecinc.com]  
**Sent:** Tuesday, September 29, 2015 2:05 PM  
**To:** Sam Scholle; Lee Zeringue  
**Cc:** Sid Trouard; Bobby Donaldson  
**Subject:** RE: Loupe St. and sign locations

Gentlemen,

Lee Zeringue and I met on Loupe St. yesterday afternoon to review the roadway's issues. It was determined that the road should be kept at a constant width of approximately 16', which would be on top of the shell base. Because of this width and not requiring additional aggregate for base, we were able to keep the cost under \$10,000.

Mobilization is not included since this will be part of the 2015 Road Maintenance Program.

Attached is the cost breakdown to do this work.

**Gavin D. Gillen, P.E.** | Project Manager  
G.E.C., Inc.  
Office: (504) 838-6009 | Cell Phone: (504) 237-9697 | Fax: (504) 218-7229  
Email: [GGillen@gecinc.com](mailto:GGillen@gecinc.com)

PRIVILEGED AND CONFIDENTIAL COMMUNICATION: DO NOT read, copy or disseminate this communication unless you are the intended recipient. This entire e-mail transmission contains information that belongs to the sender, and which may be privileged, confidential and exempt from disclosure under applicable state and federal privacy and/or disclosure laws. The information is intended solely for the addressee(s) named above. If you are not the named addressee, you are hereby notified that any disclosure, copying, distribution or the taking of any action in reliance on the contents of this transmission is strictly prohibited. If you have received this transmission in error, please notify us immediately in order to arrange for the return of the document. While G.E.C., Inc. believes this transmittal to be free of virus or other defect, it is the responsibility of the recipient to ensure that it is virus free and no responsibility is accepted by G.E.C., Inc. (or its subsidiaries and affiliates) for any loss or damage arising therefrom.

---

**From:** Sam Scholle [mailto:sscholle@stcharlesgov.net]  
**Sent:** Thursday, September 17, 2015 3:35 PM  
**To:** Gavin Gillen; Lee Zeringue  
**Cc:** Sid Trouard; Bobby Donaldson  
**Subject:** RE: Loupe St. and sign locations

Please look at the road once more. I need to keep this under \$10,000.

I need to go back to VJ if the cost is higher.

Sam

St. Charles Parish  
Dept. of Public Works/Wastewater  
Sam Scholle  
Director  
100 River Oaks Drive  
Destrehan, La 70047

---

**From:** Gavin Gillen [<mailto:ggillen@gecinc.com>]  
**Sent:** Thursday, September 17, 2015 1:50 PM  
**To:** Sam Scholle; Lee Zeringue  
**Cc:** Sid Trouard  
**Subject:** RE: Loupe St. and sign locations

The overlay of 3" will be \$9,200.

If we need to add crushed stone, I approximate the cost for that stone to be around \$2,500. Barriere already gave me the unit cost for the stone to be \$70/ton. The my estimate is for adding 5' of stone in a width of 6' for a length of 270', and the stone weighing 1.17 tons/cubic foot. A 20% factor was included for compaction.

I will discuss this with Lee on Monday as to whether or not this needs stone.

**Gavin D. Gillen, P.E.** | Project Manager  
G.E.C., Inc.  
Office: (504) 838-6009 | Cell Phone: (504) 237-9697 | Fax: (504) 218-7229  
Email: [GGillen@gecinc.com](mailto:GGillen@gecinc.com)

PRIVILEGED AND CONFIDENTIAL COMMUNICATION: DO NOT read, copy or disseminate this communication unless you are the intended recipient. This entire e-mail transmission contains information that belongs to the sender, and which may be privileged, confidential and exempt from disclosure under applicable state and federal privacy and/or disclosure laws. The information is intended solely for the addressee(s) named above. If you are not the named addressee, you are hereby notified that any disclosure, copying, distribution or the taking of any action in reliance on the contents of this transmission is strictly prohibited. If you have received this transmission in error, please notify us immediately in order to arrange for the return of the document. While G.E.C., Inc. believes this transmittal to be free of virus or other defect, it is the responsibility of the recipient to ensure that it is virus free and no responsibility is accepted by G.E.C., Inc. (or its subsidiaries and affiliates) for any loss or damage arising therefrom.

---

**From:** Sam Scholle [<mailto:sscholle@stcharlesgov.net>]  
**Sent:** Thursday, September 17, 2015 1:05 PM  
**To:** Gavin Gillen; Lee Zeringue  
**Cc:** Sid Trouard  
**Subject:** RE: Loupe St. and sign locations

Please verify price. Hopefully it will be under \$10K?

St. Charles Parish  
Dept. of Public Works/Wastewater  
Sam Scholle  
Director  
100 River Oaks Drive  
Destrehan, La 70047

---

**From:** Gavin Gillen [<mailto:ggillen@gecinc.com>]  
**Sent:** Thursday, September 17, 2015 1:01 PM  
**To:** Lee Zeringue; Sam Scholle  
**Cc:** Sid Trouard  
**Subject:** Fwd: Loupe St. and sign locations

Gentlemen,

The email below is from Monday. This was the last we discussed Loupe. I will be in the Parish on Monday for a meeting with Lee.

I think we have time before paving starts.

Sent from my mobile device

Begin forwarded message:

**From:** Lee Zeringue <[lzingue@stcharlesgov.net](mailto:lzingue@stcharlesgov.net)>  
**Date:** September 14, 2015 at 4:43:10 PM CDT  
**To:** Frank Wiley <[fwiley@gecinc.com](mailto:fwiley@gecinc.com)>, Gavin Gillen <[ggillen@gecinc.com](mailto:ggillen@gecinc.com)>, "Dawn D'Angelo" <[DawnD@Barriere.com](mailto:DawnD@Barriere.com)>  
**Subject:** RE: Loupe St. and sign locations

If the base is wide enough then yes; otherwise we can talk about it when you are in the area Gavin. I am assuming paving won't be a at least a couple more weeks?

Lawrence "Lee" Zeringue, PE  
Senior Parish Engineer  
St. Charles Parish Dept of Public Works/Wastewater

---

**From:** Frank Wiley [<mailto:fwiley@gecinc.com>]  
**Sent:** Monday, September 14, 2015 3:52 PM  
**To:** Gavin Gillen; Dawn D'Angelo  
**Cc:** Lee Zeringue  
**Subject:** RE: Loupe St. and sign locations

Gavin:

Just checking - we want to match width with the existing paved section of Loupe St.?

Frank

Sent from my Verizon Wireless 4G LTE smartphone

----- Original message -----

**From:** Gavin Gillen <[ggillen@gecinc.com](mailto:ggillen@gecinc.com)>  
**Date:** 09/14/2015 3:44 PM (GMT-06:00)  
**To:** Dawn D'Angelo <[DawnD@Barriere.com](mailto:DawnD@Barriere.com)>  
**Cc:** Frank Wiley <[fwiley@gecinc.com](mailto:fwiley@gecinc.com)>, [lzingue@stcharlesgov.net](mailto:lzingue@stcharlesgov.net)  
**Subject:** RE: Loupe St. and sign locations

Great, thanks!!!

Gavin D. Gillen, P.E. | Project Manager  
G.E.C., Inc.

Office: (504) 838-6009 | Cell Phone: (504) 237-9697 | Fax: (504) 218-7229

Email: [GGillen@gecinc.com](mailto:GGillen@gecinc.com)

PRIVILEGED AND CONFIDENTIAL COMMUNICATION: DO NOT read, copy or disseminate this communication unless you are the intended recipient. This entire e-mail transmission contains information that belongs to the sender, and which may be privileged, confidential and exempt from disclosure under applicable state and federal privacy and/or disclosure laws. The information is intended solely for the addressee(s) named above. If you are not the named addressee, you are hereby notified that any disclosure, copying, distribution or the taking of any action in reliance on the contents of this transmission is strictly prohibited. If you have received this transmission in error, please notify us immediately in order to arrange for the return of the document. While G.E.C., Inc. believes this transmittal to be free of virus or other defect, it is the responsibility of the recipient to ensure that it is virus free and no responsibility is accepted by G.E.C., Inc. (or its subsidiaries and affiliates) for any loss or damage arising therefrom.

-----Original Message-----

From: Dawn D'Angelo [<mailto:DawnD@Barriere.com>]

Sent: Monday, September 14, 2015 3:44 PM

To: Gavin Gillen

Cc: Frank Wiley; [lzeringue@stcharlesgov.net](mailto:lzeringue@stcharlesgov.net)

Subject: Re: Loupe St. and sign locations

Looks like we can catch it as we go.

Sent from my iPhone

On Sep 14, 2015, at 1:24 PM, Gavin Gillen

[ggillen@gecinc.com](mailto:ggillen@gecinc.com)<<mailto:ggillen@gecinc.com>>> wrote:

Hey Dawn,

Would Barriere be able to do a 3" overlay on Loupe St. in Luling if the Parish adds it into the current Road Maintenance Program? This roadway intersects River Road, and is just east of Sugarhouse Road. Loupe somewhat falls between 2 roads that are part of the 2015 Rd. Maintenance Program: Seymore (off of Easy St./Paul Mallard) and Badalementi.

The end of the roadway has 610 limestone, so we need to overlay that portion. Instead of doing 2", we will do 3" so there will be a layer we can take off in a future road maintenance program. I think y'all can do this job in 1 day, but will give 2 calendar days just to be safe. We are looking at about 100 tons of asphalt to be used, with a crown in the middle to let runoff enter the ditches on both sides of the road.

I spoke with Lee on Thursday about sign locations. Please place a sign on Goodhope on the east bank and on the corner of St. Maria and Oak Ln. on the west bank (pointed towards US 90, so cars coming off 90 can see it).

Gavin D. Gillen, P.E. | Project Manager

G.E.C., Inc.

Office: (504) 838-6009 | Cell Phone: (504) 237-9697 | Fax: (504) 218-7229

Email: [GGillen@gecinc.com](mailto:GGillen@gecinc.com)<<mailto:GGillen@gecinc.com>>

3445 N. Causeway Blvd., Suite 401

Metairie, LA 70002

Toll Free: (877) 374-2912

PRIVILEGED AND CONFIDENTIAL COMMUNICATION: DO NOT read, copy or disseminate this communication unless you are the intended recipient. This entire e-mail transmission contains information that belongs to the sender, and which may be privileged, confidential and exempt from disclosure under applicable state and federal privacy and/or disclosure laws. The information is intended solely for the addressee(s) named above. If you are not the named addressee, you are hereby notified that any disclosure, copying, distribution or the taking of any action in reliance on the contents of this transmission is strictly prohibited. If you have received this transmission in error, please notify us immediately in order to arrange for the return of the document. While G.E.C., Inc. believes this transmittal to be free of virus or other defect, it is the responsibility of the recipient to ensure that it is virus free and no responsibility is accepted by G.E.C., Inc. (or its subsidiaries and affiliates) for any loss or damage arising therefrom.

The information in this email and in any attachments is confidential and may be privileged. If you are not the intended recipient, please destroy this message, delete any copies on your systems and notify the sender immediately. You should not retain, copy, or use this email for any purpose, nor disclose all or any part of its content to any other person.



# ST. CHARLES PARISH

*DEPARTMENT OF PUBLIC WORKS*

100 RIVER OAKS DRIVE • DESTREHAN, LOUISIANA 70047

(985) 783-5102 • (985) 783-5104 • FAX (985) 725-2250

Website: [www.stcharlesparish-la.gov](http://www.stcharlesparish-la.gov)

V.J. ST. PIERRE, JR.  
PARISH PRESIDENT

SAM SCHOLLE  
DIRECTOR

October 22, 2015

Sid Trouard, P.E., Vice President  
GEC, Inc.  
3445 North Causeway Boulevard, Suite 401  
Metairie, LA 70002

SUBJECT: Work Directives No. 1 and No. 2  
Road Maintenance 2015  
St. Charles Parish Project No. P111002-18

Dear Mr. Trouard:

Please find enclosed executed Work Directives No. 1 and No. 2 for the referenced project. Should you have any questions or require additional information, please let me know.

Sincerely,

Ruby E. Dennis  
Administrative Assistant

RED

Enclosures

RECEIVED  
OCT 26 2015  
METAIRIE OFFICE

SECTION 00805

**WORK CHANGE DIRECTIVE**

No. 2

DATE OF ISSUANCE October 19, 2015 EFFECTIVE DATE October 12, 2015

Owner: St. Charles Parish  
Contractor: Barriere Construction Co., L.L.C.  
Contract: 2015 Road Maintenance Program  
Project: Road Maintenance 2015  
Owner's Contract No.: P111002-18 Engineer's Contract No.: 51.2060105.018  
ENGINEER: GEC, Inc.

Contractor is directed to proceed promptly with the following change(s):

Description: Cold Plane James Dr. West from River Road to the end of the asphalt portion of the roadway. Transport all reclaimed material to James Dr. East, spread it on the roadway, and grade it to Parish standards. Patch any required areas on James Dr. West with a 6" minimum patch, and then overlay the cold planed section with a 6" layer of asphalt. Shoulder material will be placed to remove the drop off along the edge of the roadway.

Attachments: (List documents supporting change)

1. October 8, 2015 email from Gavin Gillen (GEC Engineer) with attached Engineer's Opinion of Probable Construction Cost and limits.
2. October 7, 2015 and October 12, 2015 emails from Dawn D'Angelo (Barriere Project Manager) accepting the estimated prices and the addition of James Dr. East and James Dr. West to the 2015 Road Maintenance Program.
3. October 12, 2015 email from Lee Zeringue (SCP Engineer) verifying that the project is acceptable to be included in the 2015 Road Maintenance Program and directing GEC to generate a Work Change Order for these roadways.
4. October 12, 2015 email from Buddy Boe (SCP CAO) directing attorneys to draft the legislative vehicle to receive and recognize the financial donation from the Bunge company.

**Purpose for Work Change Directive:**

Directive to proceed promptly with the Work described herein, prior to agreeing to changes on Contract Price and Contract Time, is issued due to: *(check one)*

- Non-agreement on pricing of proposed change.  
 Necessity to proceed for schedule or other project reasons.



**Estimated Change in Contract Price and Contract Times (non-binding, preliminary):**

Contract Price: \$ 86,790.86 [increase]

Contract Time 5 days [increase]

**Basis of estimated change in Contract Price:**

- Lump Sum  Unit Price  
 Cost of the Work  Other

Recommended:		Limited Authorization By*:		Received:
By: <u>Aid Steward</u>	By: <u>Sam Schell</u>	By: <u>David Wright</u>		
Engineer (Authorized Signature)	Owner's Representative*	Contractor (Authorized Signature)		
Title: Vice President	Title: <u>Director PWTWA</u>	Title: <u>Sr. Project Manager</u>		
Date: <u>10/21/15</u>	Date: <u>10-22-15</u>	Date: <u>10/21/2015</u>		

\*Owner's Representative is not authorized to finalize a Change Order nor does the Work Change Directive substitute the Change Order process as more fully set out in the General Conditions of the Construction Contract.

Approved by Funding Agency (if applicable)

By: \_\_\_\_\_ Date: \_\_\_\_\_  
Title: \_\_\_\_\_

## Gavin Gillen

---

**From:** Gavin Gillen  
**Sent:** Thursday, October 08, 2015 3:46 PM  
**To:** 'Dawn D'Angelo'  
**Cc:** 'Lee Zeringue (lzingue@stcharlesgov.net)'; 'Sam Scholle'; Sid Trouard (strouard@gecinc.com)  
**Subject:** Final Verification for James Dr.

Tracking:	Recipient	Read
	'Dawn D'Angelo'	
	'Lee Zeringue (lzingue@stcharlesgov.net)'	
	'Sam Scholle'	
	Sid Trouard (strouard@gecinc.com)	
	Sid Trouard	Read: 10/8/2015 3:47 PM

Dawn,

Please advise if this estimate below to do all of the work on James Dr. is not correct. I understand that the prices may change a little due to differences in field measurements, but I want to make sure the items and unit pricing is acceptable to you. I have SCP DPW on here, so please reply all if it looks good. Thanks in advance!

2" Cold Plane	2185.944	SY	\$1.00	\$2,185.94
6" Overlay	721.3617	Tons	\$93.00	\$67,086.64
6" Patching	111.3906	Tons	\$130.00	\$14,480.78
Shoulder Material (Earthen Fill)	2250	LF	\$1.35	\$3,037.50

Total = \$86,790.86

Sincerely,

**Gavin D. Gillen, P.E.** | Project Manager  
G.E.C., Inc.  
Office: (504) 838-6009 | Cell Phone: (504) 237-9697 | Fax: (504) 218-7229  
Email: [GGillen@gecinc.com](mailto:GGillen@gecinc.com)  
3445 N. Causeway Blvd., Suite 401  
Metairie, LA 70002  
Toll Free: (877) 374-2912

PRIVILEGED AND CONFIDENTIAL COMMUNICATION: DO NOT read, copy or disseminate this communication unless you are the intended recipient. This entire e-mail transmission contains information that belongs to the sender, and which may be privileged, confidential and exempt from disclosure under applicable state and federal privacy and/or disclosure laws. The information is intended solely for the addressee(s) named above. If you are not the named addressee, you are hereby notified that any disclosure, copying, distribution or the taking of any action in reliance on the contents of this transmission is strictly prohibited. If you have received this transmission in error, please notify us immediately in order to arrange for the return of the document. While G.E.C., Inc. believes this transmittal to be free of virus or other defect, it is the responsibility of the recipient to ensure that it is virus free and no responsibility is accepted by G.E.C., Inc. (or its subsidiaries and affiliates) for any loss or damage arising therefrom.

## Gavin Gillen

---

**From:** Dawn D'Angelo <DawnD@Barriere.com>  
**Sent:** Wednesday, October 07, 2015 2:49 PM  
**To:** Gavin Gillen  
**Subject:** Additional charge

Gavin,

We are not going to charge the parish any additional charge for lowboying, dumping and spreading or anything outside of the contract units for work put in place for W. James in Destrehan.

Sincerely,

Dawn D'Angelo  
Senior Project Manager/ Estimator, South Shore Asphalt  
Barriere Construction Co., L.L.C.  
1268 LA Highway 3127  
P.O. Box 1576  
Boutte, LA 70039-1576  
OFC: 985-785-7700 CELL: 504-432-6871  
FAX: 985-331-3559 DIRECT: 985-331-3548  
[dawnd@barriere.com](mailto:dawnd@barriere.com)  
[www.barriere.com](http://www.barriere.com)



The information in this email and in any attachments is confidential and may be privileged. If you are not the intended recipient, please destroy this message, delete any copies on your systems and notify the sender immediately. You should not retain, copy, or use this email for any purpose, nor disclose all or any part of its content to any other person.

## Gavin Gillen

---

**From:** Dawn D'Angelo <DawnD@Barriere.com>  
**Sent:** Monday, October 12, 2015 3:08 PM  
**To:** Gavin Gillen  
**Subject:** RE: James Drive West

Yes, that was a gift.

---

**From:** Gavin Gillen [<mailto:ggillen@gecinc.com>]  
**Sent:** Monday, October 12, 2015 3:07 PM  
**To:** Dawn D'Angelo <[DawnD@Barriere.com](mailto:DawnD@Barriere.com)>  
**Cc:** Sid Trouard <[strouard@gecinc.com](mailto:strouard@gecinc.com)>  
**Subject:** FW: James Drive West

Dawn,

Please see below. I believe you already confirmed the \$86,790.86 includes the spreading, so please advise if it does not. Thanks!

**Gavin D. Gillen, P.E.** | Project Manager  
G.E.C., Inc.  
Office: (504) 838-6009 | Cell Phone: (504) 237-9697 | Fax: (504) 218-7229  
Email: [GGillen@gecinc.com](mailto:GGillen@gecinc.com)

PRIVILEGED AND CONFIDENTIAL COMMUNICATION: DO NOT read, copy or disseminate this communication unless you are the intended recipient. This entire e-mail transmission contains information that belongs to the sender, and which may be privileged, confidential and exempt from disclosure under applicable state and federal privacy and/or disclosure laws. The information is intended solely for the addressee(s) named above. If you are not the named addressee, you are hereby notified that any disclosure, copying, distribution or the taking of any action in reliance on the contents of this transmission is strictly prohibited. If you have received this transmission in error, please notify us immediately in order to arrange for the return of the document. While G.E.C., Inc. believes this transmittal to be free of virus or other defect, it is the responsibility of the recipient to ensure that it is virus free and no responsibility is accepted by G.E.C., Inc. (or its subsidiaries and affiliates) for any loss or damage arising therefrom.

---

**From:** Sam Scholle [<mailto:sscholle@stcharlesgov.net>]  
**Sent:** Monday, October 12, 2015 2:42 PM  
**To:** Lee Zeringue  
**Cc:** Gavin Gillen; Sam Scholle; Bobby Donaldson; Buddy Boe  
**Subject:** James Drive West

Please go forward with the 6" overlay and confirm the \$86,790.86 price includes the spreading of reclaim.

Thanks.

Sam

**St. Charles Parish**  
**Dept. of Public Works/Wastewater**  
Sam Scholle  
Director  
100 River Oaks Drive  
Destrehan, La 70047

The information in this email and in any attachments is confidential and may be privileged. If you are not the intended recipient, please destroy this message, delete any copies on your systems and notify the sender immediately. You should not retain, copy, or use this email for any purpose, nor disclose all or any part of its content to any other person.

## Gavin Gillen

---

**From:** Lee Zeringue <lzingue@stcharlesgov.net>  
**Sent:** Monday, October 12, 2015 2:39 PM  
**To:** Gavin Gillen  
**Cc:** Sid Trouard; Sam Scholle  
**Subject:** Road maint 2015

Gavin;

I have received word from Sam; we are good to go with James Dr West. Barriere can perform he work as scheduled. We need to get the Change order Directive done up for this and for Loupe as soon as possible.

Lawrence "Lee" Zeringue, PE  
Senior Parish Engineer  
St. Charles Parish Dept of Public Works/Wastewater

## Gavin Gillen

---

**From:** Buddy Boe <bboe@stcharlesgov.net>  
**Sent:** Monday, October 12, 2015 2:42 PM  
**To:** Sam Scholle; Lee Zeringue  
**Cc:** Gavin Gillen; Bobby Donaldson; 'davidmoyerlaw@gmail.com'  
**Subject:** RE: James Drive West

David and Grant,

As I requested last week, please draft the legislative vehicle you would like to send to the council to receive and recognize the donation from Bunge.

Thanks,

**Buddy Boe, CLED | CAO**

St Charles Parish - LA  
c. 504-487-2336

---

**From:** Sam Scholle  
**Sent:** Monday, October 12, 2015 2:42 PM  
**To:** Lee Zeringue  
**Cc:** Gavin Gillen; Sam Scholle; Bobby Donaldson; Buddy Boe  
**Subject:** James Drive West

Please go forward with the 6" overlay and confirm the \$86,790.86 price includes the spreading of reclaim.

Thanks.

Sam

**St. Charles Parish**  
**Dept. of Public Works/Wastewater**  
Sam Scholle  
Director  
100 River Oaks Drive  
Destrehan, La 70047



# ST. CHARLES PARISH

## DEPARTMENT OF PUBLIC WORKS

100 RIVER OAKS DRIVE • DESTREHAN, LOUISIANA 70047  
(985) 783-5102 • (985) 783-5104 • FAX (985) 725-2250  
Website: [www.stcharlesparish-la.gov](http://www.stcharlesparish-la.gov)

V.J. ST. PIERRE, JR.  
PARISH PRESIDENT

SAM SCHOLLE  
DIRECTOR

October 28, 2015

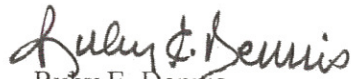
Sid Trouard, P.E., Vice President  
G.E.C., Inc.  
3445 North Causeway Boulevard, Suite 401  
Metairie, LA 70002

**SUBJECT: Work Directive No. 3  
Road Maintenance 2015  
St. Charles Parish Project No. P111002-18**

Dear Mr. Trouard:

Please find enclosed a fully executed Work Directive No. 3 for the referenced subject. Should you have any questions, please let me know.

Sincerely,

  
Ruby E. Dennis  
Administrative Assistant

RED

Enclosure

RECEIVED  
OCT 30 2015  
METAIRIE OFFICE



SECTION 00805

**WORK CHANGE DIRECTIVE**

No.   3  

DATE OF ISSUANCE   October 23, 2015        EFFECTIVE DATE   October 19, 2015  

Owner:   St. Charles Parish  

Contractor:   Barriere Construction Co., L.L.C.  

Contract:   2015 Road Maintenance Program  

Project:   Road Maintenance 2015  

Owner's Contract No.:   P111002-18        Engineer's Contract No.:   51.2060105.018  

ENGINEER:   GEC, Inc.  

Contractor is directed to proceed promptly with the following change(s):

Description: Cold Plane and Overlay Sixth St. from W. Pine St. to Good Hope St. No work will take place at the intersection of Apple St. since Apple is a state owned roadway. The additional work on Sixth St. is dependent on when the Parish DPW completes installing pipes under the roadway, so the Contractor has requested a pay item for remobilization since the cold plane and overlay activity has been completed for all other streets.

Attachments: (List documents supporting change)

1. October 16, 2015 email from Gavin Gillen (GEC Engineer) to Dawn D'Angelo (Barriere Project Manager) with the estimated cost of work, quantities, and inquiry on whether Barriere would accept the work. The street inadvertently referred to as Fifth St., which is corrected in a later email.
2. October 19, 2015 email from Dawn D'Angelo (Barriere Project Manager) implying that Barriere is willing to do the work.
3. October 19, 2015 email from Dawn D'Angelo (Barriere Project Manager) stating the cost estimate on the remobilization fee.
4. October 19, 2015 email from Lee Zeringue (SCP Engineer) verifying that the additional cost is acceptable to be included in the 2015 Road Maintenance Program and directing GEC to generate a Work Change Order for these roadways.

**Purpose for Work Change Directive:**

Directive to proceed promptly with the Work described herein, prior to agreeing to changes on Contract Price and Contract Time, is issued due to: *(check one)*

- Non-agreement on pricing of proposed change.
- Necessity to proceed for schedule or other project reasons.



## Gavin Gillen

---

**From:** Gavin Gillen  
**Sent:** Friday, October 16, 2015 2:39 PM  
**To:** 'Dawn D'Angelo'  
**Subject:** Fifth St. (in Norco) work

Dawn,

St. Charles Parish would like to add ANOTHER road into the program. It was actually included as a patch only road, but now they was to mill and overlay. My calculations show that the amount of milling (6,657 SY), overlay (732 tons), and miscellaneous items (shoulder material, fire hydrant buttons, etc.) should result in an approximately \$77,000 worth of additional work on Fifth St. Only the intersection of Apple will be excluded from this work, as Apple is a state roadway.

Would Barriere be interested in doing this work as part of the 2015 Road Maintenance Program? Are there any additional fees that should be considered? SCP is hoping to avoid any type of remobilization fee.

This work would also include an additional 4 days (2 for milling, 2 for overlay) to the contract. Please advise, and thank in advance.

**Gavin D. Gillen, P.E.** | Project Manager  
G.E.C., Inc.  
Office: (504) 838-6009 | Cell Phone: (504) 237-9697 | Fax: (504) 218-7229  
Email: [GGillen@gecinc.com](mailto:GGillen@gecinc.com)  
3445 N. Causeway Blvd., Suite 401  
Metairie, LA 70002  
Toll Free: (877) 374-2912

*PRIVILEGED AND CONFIDENTIAL COMMUNICATION: DO NOT read, copy or disseminate this communication unless you are the intended recipient. This entire e-mail transmission contains information that belongs to the sender, and which may be privileged, confidential and exempt from disclosure under applicable state and federal privacy and/or disclosure laws. The information is intended solely for the addressee(s) named above. If you are not the named addressee, you are hereby notified that any disclosure, copying, distribution or the taking of any action in reliance on the contents of this transmission is strictly prohibited. If you have received this transmission in error, please notify us immediately in order to arrange for the return of the document. While G.E.C., Inc. believes this transmittal to be free of virus or other defect, it is the responsibility of the recipient to ensure that it is virus free and no responsibility is accepted by G.E.C., Inc. (or its subsidiaries and affiliates) for any loss or damage arising therefrom.*

## Gavin Gillen

---

**From:** Dawn D'Angelo <DawnD@Barriere.com>  
**Sent:** Monday, October 19, 2015 11:00 AM  
**To:** Gavin Gillen  
**Cc:** lzingue@stcharlesgov.net  
**Subject:** RE: SIXTH St. (in Norco) work

I first have to see when the miller is available. Would also need to see when I can get a paving spread. We have the two week schedule lined out and at this time there is no holes in the paving spread. I will have to get back to you after checking with numerous people about their schedules.

Sincerely,

Dawn

---

**From:** Gavin Gillen [mailto:ggillen@gecinc.com]  
**Sent:** Monday, October 19, 2015 10:40 AM  
**To:** Dawn D'Angelo <DawnD@Barriere.com>  
**Cc:** lzingue@stcharlesgov.net  
**Subject:** SIXTH St. (in Norco) work

Dawn,

If the parish decides to move forward with this work (by the way, it is SIXTH Street that needs to be done, not 5<sup>th</sup>... my fault!), when can this work take place? I have Lee attached since there may be SCP work involved prior to the mill and overlay.

Gavin D. Gillen, P.E. | Project Manager  
G.E.C., Inc.  
Office: (504) 838-6009 | Cell Phone: (504) 237-9697 | Fax: (504) 218-7229  
Email: [GGillen@gecinc.com](mailto:GGillen@gecinc.com)

PRIVILEGED AND CONFIDENTIAL COMMUNICATION: DO NOT read, copy or disseminate this communication unless you are the intended recipient. This entire e-mail transmission contains information that belongs to the sender, and which may be privileged, confidential and exempt from disclosure under applicable state and federal privacy and/or disclosure laws. The information is intended solely for the addressee(s) named above. If you are not the named addressee, you are hereby notified that any disclosure, copying, distribution or the taking of any action in reliance on the contents of this transmission is strictly prohibited. If you have received this transmission in error, please notify us immediately in order to arrange for the return of the document. While G.E.C., Inc. believes this transmittal to be free of virus or other defect, it is the responsibility of the recipient to ensure that it is virus free and no responsibility is accepted by G.E.C., Inc. (or its subsidiaries and affiliates) for any loss or damage arising therefrom.

---

**From:** Dawn D'Angelo [mailto:DawnD@Barriere.com]  
**Sent:** Monday, October 19, 2015 10:07 AM  
**To:** Gavin Gillen  
**Subject:** RE: Fifth St. (in Norco) work

Gavin,

The milling finished up last week and the machine has been sent back. The overlay is scheduled to finish up this Friday. SCP would have to absorb the cost of moving the milling machine back into the area and the cost of moving the paver back across the river. They are on the west bang at this time. Let me know how you want us to proceed.

Sincerely,

Dawn

**From:** Gavin Gillen [<mailto:ggillen@gecinc.com>]  
**Sent:** Friday, October 16, 2015 2:39 PM  
**To:** Dawn D'Angelo <[DawnD@Barriere.com](mailto:DawnD@Barriere.com)>  
**Subject:** Fifth St. (in Norco) work

Dawn,

St. Charles Parish would like to add ANOTHER road into the program. It was actually included as a patch only road, but now they was to mill and overlay. My calculations show that the amount of milling (6,657 SY), overlay (732 tons), and miscellaneous items (shoulder material, fire hydrant buttons, etc.) should result in an approximately \$77,000 worth of additional work on Fifth St. Only the intersection of Apple will be excluded from this work, as Apple is a state roadway.

Would Barriere be interested in doing this work as part of the 2015 Road Maintenance Program? Are there any additional fees that should be considered? SCP is hoping to avoid any type of remobilization fee.

This work would also include an additional 4 days (2 for milling, 2 for overlay) to the contract. Please advise, and thank in advance.

**Gavin D. Gillen, P.E.** | Project Manager  
G.E.C., Inc.  
Office: (504) 838-6009 | Cell Phone: (504) 237-9697 | Fax: (504) 218-7229  
Email: [GGillen@gecinc.com](mailto:GGillen@gecinc.com)  
3445 N. Causeway Blvd., Suite 401  
Metairie, LA 70002  
Toll Free: (877) 374-2912

PRIVILEGED AND CONFIDENTIAL COMMUNICATION: DO NOT read, copy or disseminate this communication unless you are the intended recipient. This entire e-mail transmission contains information that belongs to the sender, and which may be privileged, confidential and exempt from disclosure under applicable state and federal privacy and/or disclosure laws. The information is intended solely for the addressee(s) named above. If you are not the named addressee, you are hereby notified that any disclosure, copying, distribution or the taking of any action in reliance on the contents of this transmission is strictly prohibited. If you have received this transmission in error, please notify us immediately in order to arrange for the return of the document. While G.E.C., Inc. believes this transmittal to be free of virus or other defect, it is the responsibility of the recipient to ensure that it is virus free and no responsibility is accepted by G.E.C., Inc. (or its subsidiaries and affiliates) for any loss or damage arising therefrom.

The information in this email and in any attachments is confidential and may be privileged. If you are not the intended recipient, please destroy this message, delete any copies on your systems and notify the sender immediately. You should not retain, copy, or use this email for any purpose, nor disclose all or any part of its content to any other person.

The information in this email and in any attachments is confidential and may be privileged. If you are not the intended recipient, please destroy this message, delete any copies on your systems and notify the sender immediately. You should not retain, copy, or use this email for any purpose, nor disclose all or any part of its content to any other person.

## Gavin Gillen

---

**From:** Dawn D'Angelo <DawnD@Barriere.com>  
**Sent:** Monday, October 19, 2015 10:32 AM  
**To:** Gavin Gillen  
**Subject:** RE: Fifth St. (in Norco) work

They will charge me \$2500 to move the miller and the rest of that spread is about \$2000. Moving the entire paving spread is about \$ 4000.00. The prep crew machines have to go to because they have all the cleanup. You are looking at \$10,000.

Sincerely,

Dawn

---

**From:** Gavin Gillen [mailto:gillen@gecinc.com]  
**Sent:** Monday, October 19, 2015 10:14 AM  
**To:** Dawn D'Angelo <DawnD@Barriere.com>  
**Subject:** RE: Fifth St. (in Norco) work

Can you give me a price for moving the milling machine back into the area and the cost of moving the paver back across the river?

Gavin D. Gillen, P.E. | Project Manager  
G.E.C., Inc.  
Office: (504) 838-6009 | Cell Phone: (504) 237-9697 | Fax: (504) 218-7229  
Email: [GGillen@gecinc.com](mailto:GGillen@gecinc.com)

PRIVILEGED AND CONFIDENTIAL COMMUNICATION: DO NOT read, copy or disseminate this communication unless you are the intended recipient. This entire e-mail transmission contains information that belongs to the sender, and which may be privileged, confidential and exempt from disclosure under applicable state and federal privacy and/or disclosure laws. The information is intended solely for the addressee(s) named above. If you are not the named addressee, you are hereby notified that any disclosure, copying, distribution or the taking of any action in reliance on the contents of this transmission is strictly prohibited. If you have received this transmission in error, please notify us immediately in order to arrange for the return of the document. While G.E.C., Inc. believes this transmittal to be free of virus or other defect, it is the responsibility of the recipient to ensure that it is virus free and no responsibility is accepted by G.E.C., Inc. (or its subsidiaries and affiliates) for any loss or damage arising therefrom.

---

**From:** Dawn D'Angelo [mailto:DawnD@Barriere.com]  
**Sent:** Monday, October 19, 2015 10:07 AM  
**To:** Gavin Gillen  
**Subject:** RE: Fifth St. (in Norco) work

Gavin,

The milling finished up last week and the machine has been sent back. The overlay is scheduled to finish up this Friday. SCP would have to absorb the cost of moving the milling machine back into the area and the cost of moving the paver back across the river. They are on the west bang at this time. Let me know how you want us to proceed.

Sincerely,

Dawn

---

**From:** Gavin Gillen [mailto:gillen@gecinc.com]  
**Sent:** Friday, October 16, 2015 2:39 PM

To: Dawn D'Angelo <[DawnD@Barriere.com](mailto:DawnD@Barriere.com)>

Subject: Fifth St. (in Norco) work

Dawn,

St. Charles Parish would like to add ANOTHER road into the program. It was actually included as a patch only road, but now they was to mill and overlay. My calculations show that the amount of milling (6,657 SY), overlay (732 tons), and miscellaneous items (shoulder material, fire hydrant buttons, etc.) should result in an approximately \$77,000 worth of additional work on Fifth St. Only the intersection of Apple will be excluded from this work, as Apple is a state roadway.

Would Barriere be interested in doing this work as part of the 2015 Road Maintenance Program? Are there any additional fees that should be considered? SCP is hoping to avoid any type of remobilization fee.

This work would also include an additional 4 days (2 for milling, 2 for overlay) to the contract. Please advise, and thank in advance.

**Gavin D. Gillen, P.E.** | Project Manager

G.E.C., Inc.

Office: (504) 838-6009 | Cell Phone: (504) 237-9697 | Fax: (504) 218-7229

Email: [GGillen@gecinc.com](mailto:GGillen@gecinc.com)

3445 N. Causeway Blvd., Suite 401

Metairie, LA 70002

Toll Free: (877) 374-2912

PRIVILEGED AND CONFIDENTIAL COMMUNICATION: DO NOT read, copy or disseminate this communication unless you are the intended recipient. This entire e-mail transmission contains information that belongs to the sender, and which may be privileged, confidential and exempt from disclosure under applicable state and federal privacy and/or disclosure laws. The information is intended solely for the addressee(s) named above. If you are not the named addressee, you are hereby notified that any disclosure, copying, distribution or the taking of any action in reliance on the contents of this transmission is strictly prohibited. If you have received this transmission in error, please notify us immediately in order to arrange for the return of the document. While G.E.C., Inc. believes this transmittal to be free of virus or other defect, it is the responsibility of the recipient to ensure that it is virus free and no responsibility is accepted by G.E.C., Inc. (or its subsidiaries and affiliates) for any loss or damage arising therefrom.

The information in this email and in any attachments is confidential and may be privileged. If you are not the intended recipient, please destroy this message, delete any copies on your systems and notify the sender immediately. You should not retain, copy, or use this email for any purpose, nor disclose all or any part of its content to any other person.

The information in this email and in any attachments is confidential and may be privileged. If you are not the intended recipient, please destroy this message, delete any copies on your systems and notify the sender immediately. You should not retain, copy, or use this email for any purpose, nor disclose all or any part of its content to any other person.

## Gavin Gillen

---

**From:** Lee Zeringue <lzingue@stcharlesgov.net>  
**Sent:** Monday, October 19, 2015 2:35 PM  
**To:** Gavin Gillen  
**Cc:** Sam Scholle; Steve Truitt  
**Subject:** RE: Pricing was correct for Sixth Street

Gavin;

I talked to Dawn and could not get her to come down on the price. Can you do up the directive?

Also I have them pausing the work on Sixth so that Public Works can replace some pipes in the road. Work will begin when the Dottie is active.

Lawrence "Lee" Zeringue, PE  
Senior Parish Engineer  
St. Charles Parish Dept of Public Works/Wastewater

---

**From:** Gavin Gillen [<mailto:ggillen@gecinc.com>]  
**Sent:** Monday, October 19, 2015 1:56 PM  
**To:** Lee Zeringue  
**Subject:** Pricing was correct for Sixth Street

Lee,

The email I sent about the pricing on 10/15 was correct for Sixth Street. Sorry for the confusion.

Sincerely,

**Gavin D. Gillen, P.E.** | Project Manager  
G.E.C., Inc.  
Office: (504) 838-6009 | Cell Phone: (504) 237-9697 | Fax: (504) 218-7229  
Email: [GGillen@gecinc.com](mailto:GGillen@gecinc.com)  
3445 N. Causeway Blvd., Suite 401  
Metairie, LA 70002  
Toll Free: (877) 374-2912

PRIVILEGED AND CONFIDENTIAL COMMUNICATION: DO NOT read, copy or disseminate this communication unless you are the intended recipient. This entire e-mail transmission contains information that belongs to the sender, and which may be privileged, confidential and exempt from disclosure under applicable state and federal privacy and/or disclosure laws. The information is intended solely for the addressee(s) named above. If you are not the named addressee, you are hereby notified that any disclosure, copying, distribution or the taking of any action in reliance on the contents of this transmission is strictly prohibited. If you have received this transmission in error, please notify us immediately in order to arrange for the return of the document. While G.E.C., Inc. believes this transmittal to be free of virus or other defect, it is the responsibility of the recipient to ensure that it is virus free and no responsibility is accepted by G.E.C., Inc. (or its subsidiaries and affiliates) for any loss or damage arising therefrom.