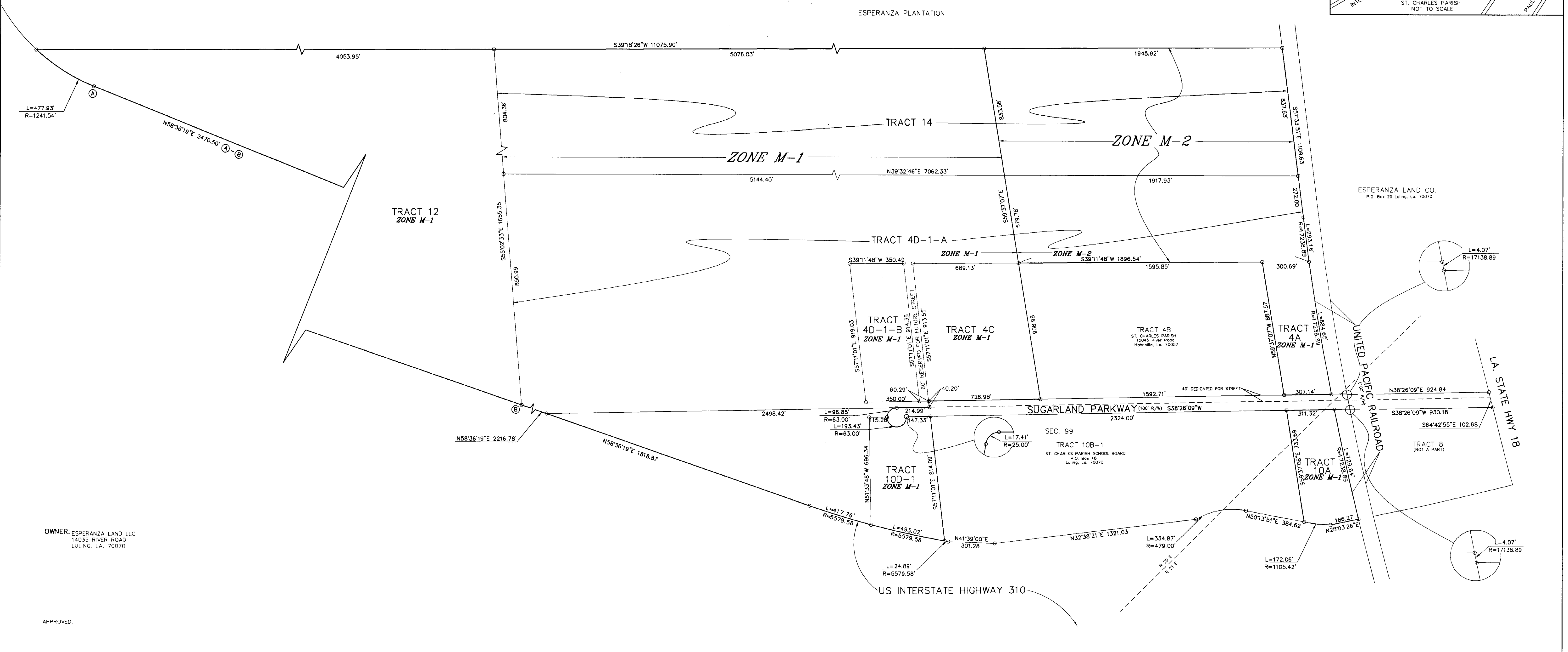
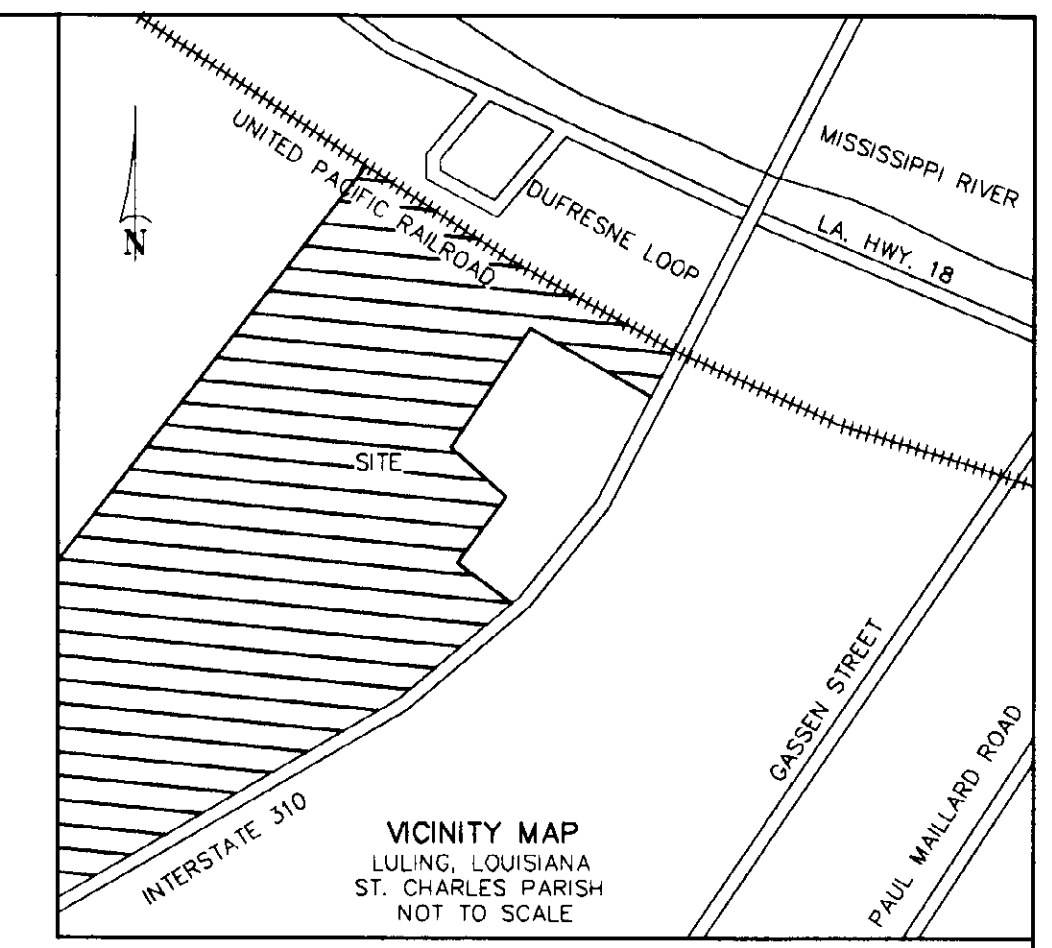


ESPERANZA BUSINESS PARK

EXHIBIT PLAT OF TRACT 12 & TRACT 14 OF ASHTON PLANTATION & TRACT 4A, TRACT 4C, TRACT 4D-1-A, TRACT 4D-1-B, TRACT 10A AND TRACT 10D-1 OF SUGARLAND SUBDIVISION TO SHOW THE CHANGE IN THE CURRENT ZONE OF ZONE C-3 TO ZONE M-1 & ZONE M-2 AS NOTED HEREON SITUATED IN SECTIONS 1, 97-102, & 121, T-13-S, R-20-E AND SECTIONS 6, 7 & 8, T-13-S, R-21-E LULING, ST. CHARLES PARISH, LOUISIANA



OWNER: ESPERANZA LAND LLC
14035 RIVER ROAD
LULING, LA. 70070

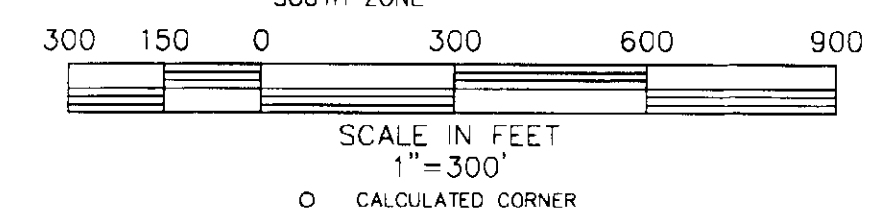
APPROVED: _____ DATE _____
CHAIRMAN, PLANNING & ZONNING COMMISSION

CHAIRMAN, ST. CHARLES PARISH COUNCIL

PARISH PRESIDENT

MAP REFERENCE: 1. RESUBDIVISION OF TRACTS 4A AND 4D-1 SUGARLAND SUBDIVISION BY MICHAEL D. BERNARD DATED 2/28/2005
2. SURVEY MAP OF TRACTS 2, 4, 5, 6, 7, 8, 9, 10, 10R, 11, 11R, 12, 13 & 14 ASHTON PLANTATION BY JOHN K. LAWS, JR. DATED 9/16/1997.

BASIS OF BEARING: BEARINGS HEREON ARE REFERENCED TO GRID NORTH AS ESTABLISHED BY THE LOUISIANA STATE PLANE COORDINATE SYSTEM, LOUISIANA SOUTH ZONE



"NOT A GROUND SURVEY"

AREA TABLE	
TRACT 4A	6.0346 ACRES
TRACT 4C	14.6917 ACRES
TRACT 4D-1-A	171.4782 ACRES ZONE M-1
TRACT 4D-1-A	24.8118 ACRES ZONE M-2
TRACT 4D-1-B	7.3301 ACRES
TRACT 14	95.325 ACRES ZONE M-1
TRACT 14	36.6890 ACRES ZONE M-2
TRACT 10A	5.5930 ACRES
TRACT 10D-1	7.4402 ACRES
TRACT 12	83.4190 ACRES

NO.	DATE	DESCRIPTION	BY
REVISIONS			
DRAWN BY:	KPB	SHEET NO. 1 OF 1	
DATE:	NOVEMBER 28, 2005	DRAWING NO. L1521REZONE	

RIVERLANDS SURVEYING COMPANY
505 HEMLOCK STREET
LAPLACE, LA. 70068
1-800-248-6982
985-652-6366

DRAFT
STEPHEN P. FLYNN
P.L.S. LA. ST. REG. NO. 4668

\\map\m\Documents\ASHTON_DUFRESNE_SUGARLAND_Parkway_Extension\Drawings\12-13-05\12122005-1715.dwg