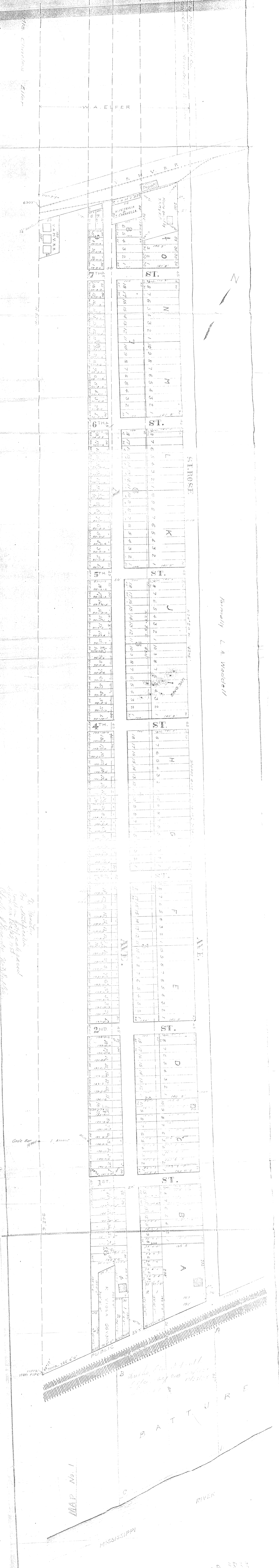


ST. ROSE SUBDIVISION

Original Filed for the City of St. Rose, Louisiana, by the  
 Subdivision is a part of the St. Rose Parish, Louisiana, and is  
 situated in the Eastern District of Louisiana East of the 90th Meridian  
 and North of the 30th Parallel.

Scale 1 in 1000  
 April 15, 1921.  
 GERT C. LG  
 Civil Engineer



Formerly L. A. Waddell

MAP No. 1

By the Subdivisor  
 Charles E. Elzer

Public  
 Iron Pipe

1. About  
 922.6

11512  
 Iron Pipe

11512  
 Iron Pipe