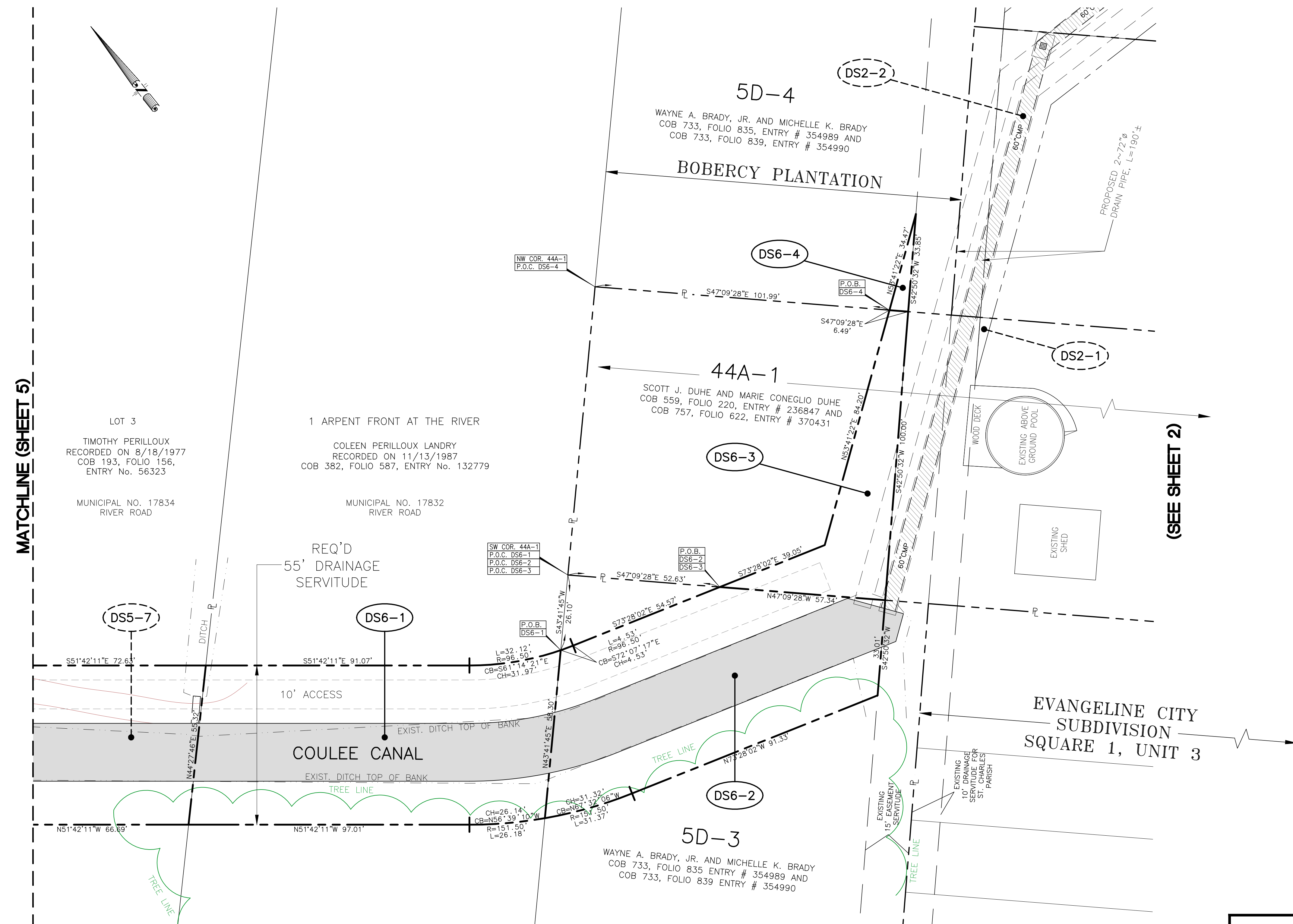


SECTION 7
T12S-R7E



DRAINAGE SERVITUDES
 REQUIRED DRAINAGE SERVITUDES FOR
 A PORTION OF COULEE CANAL
 SECTIONS 6, 7, 17 & 42, T12S-R7E
 TOWN OF MONTZ
 ST. CHARLES PARISH, LA.



3445 N. CAUSEWAY BLVD., STE. 401, METAIRIE, LA. 70002 (504)838-6009

8/25/2015	REVISED DS4-1, DS5-1, DS11-2 and DS12-1	E.W.P.	SCALE: 1" = 20'	DRAWN BY: EWP
DATE	REVISION RECORD	DRAWN BY	DATE: 4/21/2015	CHECKED BY: CAM
			JOB NO. 413-2060106.004	SHEET NO. 6 OF 15

G:\DWGSET\413\0051206016.004_Coulee Canal Improvements\DWG - Revised 8-25-2015\Coulee Canal Req'd Drainage Servitudes with Geometry and Topo Survey - Revised 8-25-15.dwg Aug 26, 2015 - 8:32am