

Acreage of Land in Ama by Zoning

District	Acreage	% of Total
O-L	787	35
W	284	13
M-3	277	12
R-1A	237	10
M-1	205	9
B-1, B-2	204	9
M-2	162	7
R-1AM	86	4
C-2	19	<1
R-1M	9	<1
Total:	2270	

ZONING

- B1-Batture, Non Industrial
- B2-Batture, Industrial
- C1-General Commercial Commercial Offices
- C2-General Commercial, Retail Sales
- M1-Light Manufacturing
- M2-Heavy Manufacturing
- M3-Heavy Manufacturing
- OL-Open Land, Rural low density residential
- R1A-Single Family Detached, Medium Density
- R1AM-Single Family Detached, Allow Mobile Homes
- R1M-Single Family Detached Mobile Homes, RV
- W-Wetland

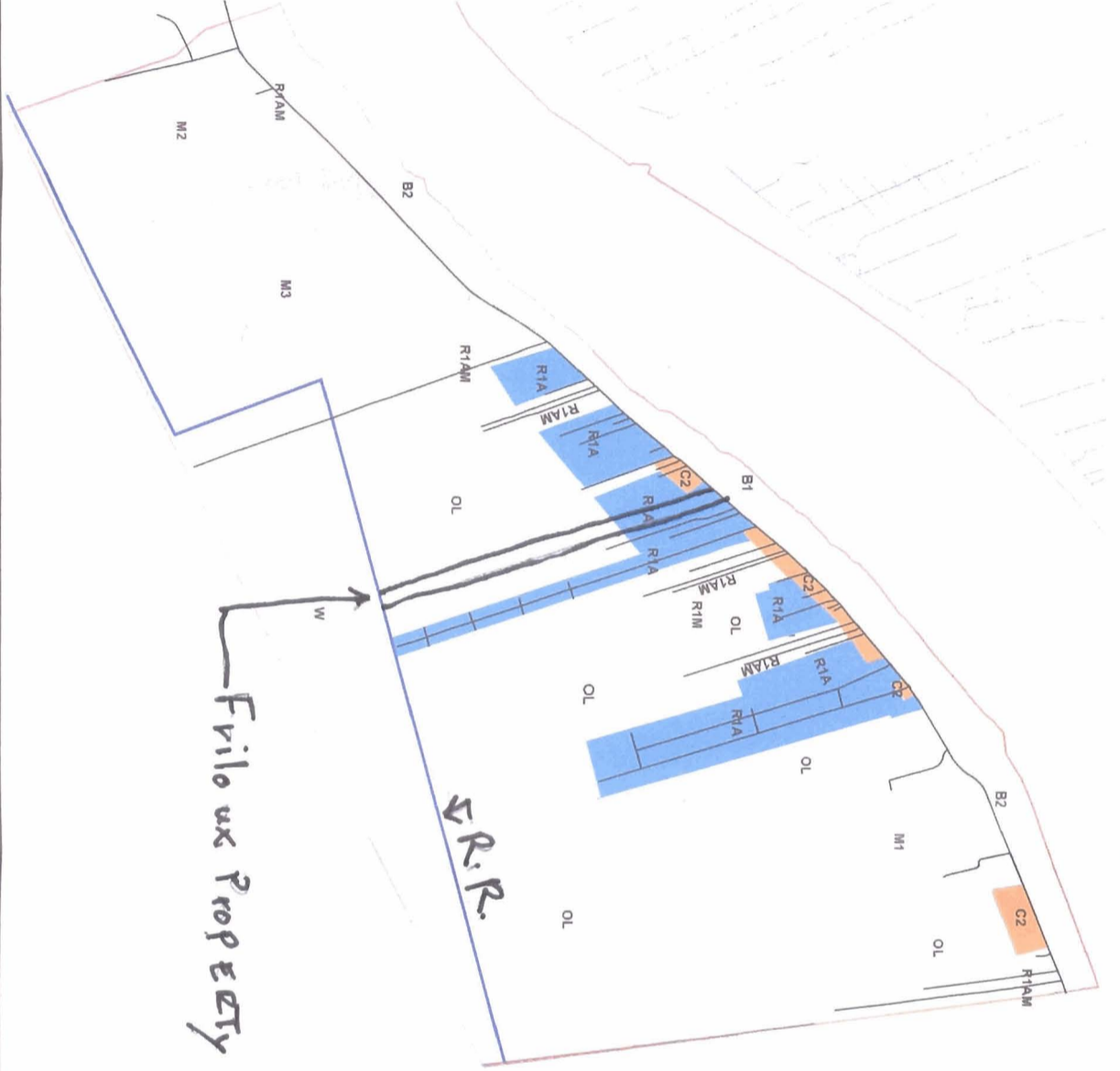


Figure 5-A
 Recommended Zoning
 Ama Land Use & Zoning Study
 Ama, Louisiana
 NOT TO SCALE
 FOR PLANNING PURPOSES ONLY

Acreeage of Land in Ama by Zoning

District	Acreeage	% of Total
W	519	23
R-1AM	439	19
O-L	324	14
M-3	277	12
M-1	205	9
B-1, B-2	204	9
M-2	162	7
R-1A	112	5
C-1	15	1
R-1M	9	<1
C-2	4	<1
Total:	2270	

ZONING

- B1-Batture, Non Industrial
- B2-Batture, Industial
- C1-General Commercial Commercial Offices
- C2-General Commercial, Retail Sales
- M1-Light Manufacturing
- M2-Heavy Manufacturing
- M3-Heavy Manufacturing
- OL-Open Land, Rural low desity residential
- R1A-Single Family Detached, Medium Density
- R1AM-Single Family Detached, Allow Mobile Homes
- R1M-Single Family Detached Mobile Homes,RV
- W-Wetland

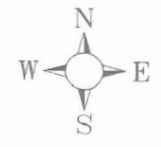
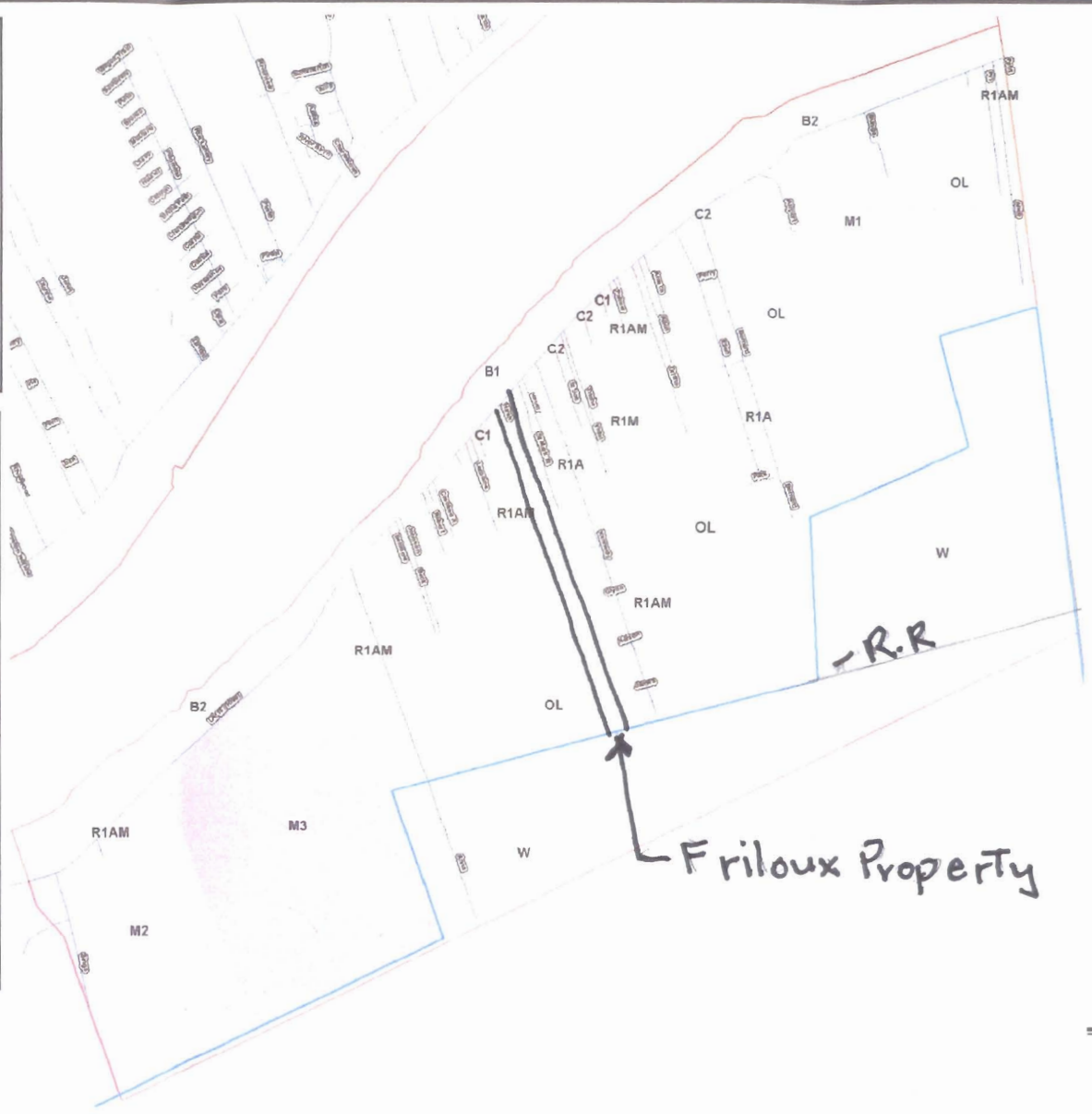


Figure 3-A
Existing Zoning

Ama Land Use & Zoning Study
Ama, Louisiana

NOT TO SCALE
FOR PLANNING PURPOSES ONLY