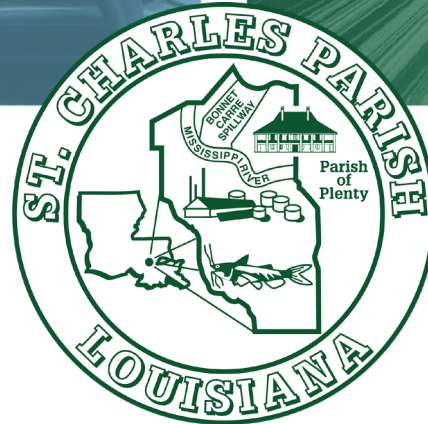




PORT OF SOUTH LOUISIANA

Celebrating 65 Years in Operation!



JULY 7, 2025

PORTSL TRADE [IN TONS, 2024]

■ ■ ■ ■ 251M TOTAL [1%↑ FROM 2023] || 3,715 VESSELS | 55,899 BARGES

#1 GRAIN EXPORTS [46M]

60% of U.S. grain | 7 elevators
99M total | >90 countries

BUNGE



Zen Noh Grain



Cargill

#2 ENERGY TRF. [107M]

3 refineries | 10 crude storage



#1 U.S. FTZ [\$65.1B RCVD]

12 zones | 5,068 employed



GLOBALPLEX



HALLIBURTON



KONGSBERG



#1 Domestic Trade: 142M



ST. CHARLES PARISH TRADE [IN TONS, 2024]

■ ■ ■ ■ 92M TOTAL [2%↑ FROM 2023] || 1,423 VESSELS | 20,828 BARGES

#1 GRAIN EXPORTS [16M]

3 Elevators
39M Total Tons

BUNGE

ADM[®]
Ama | Destrehan

#2 ENERGY TRANSFER [40M]

2 Refineries | 1 Crude Storage

IMTT
INTERNATIONAL-MATEX TANK TERMINALS

Shell

Valero[®]

#1 U.S. FTZ (124)

2 Zones

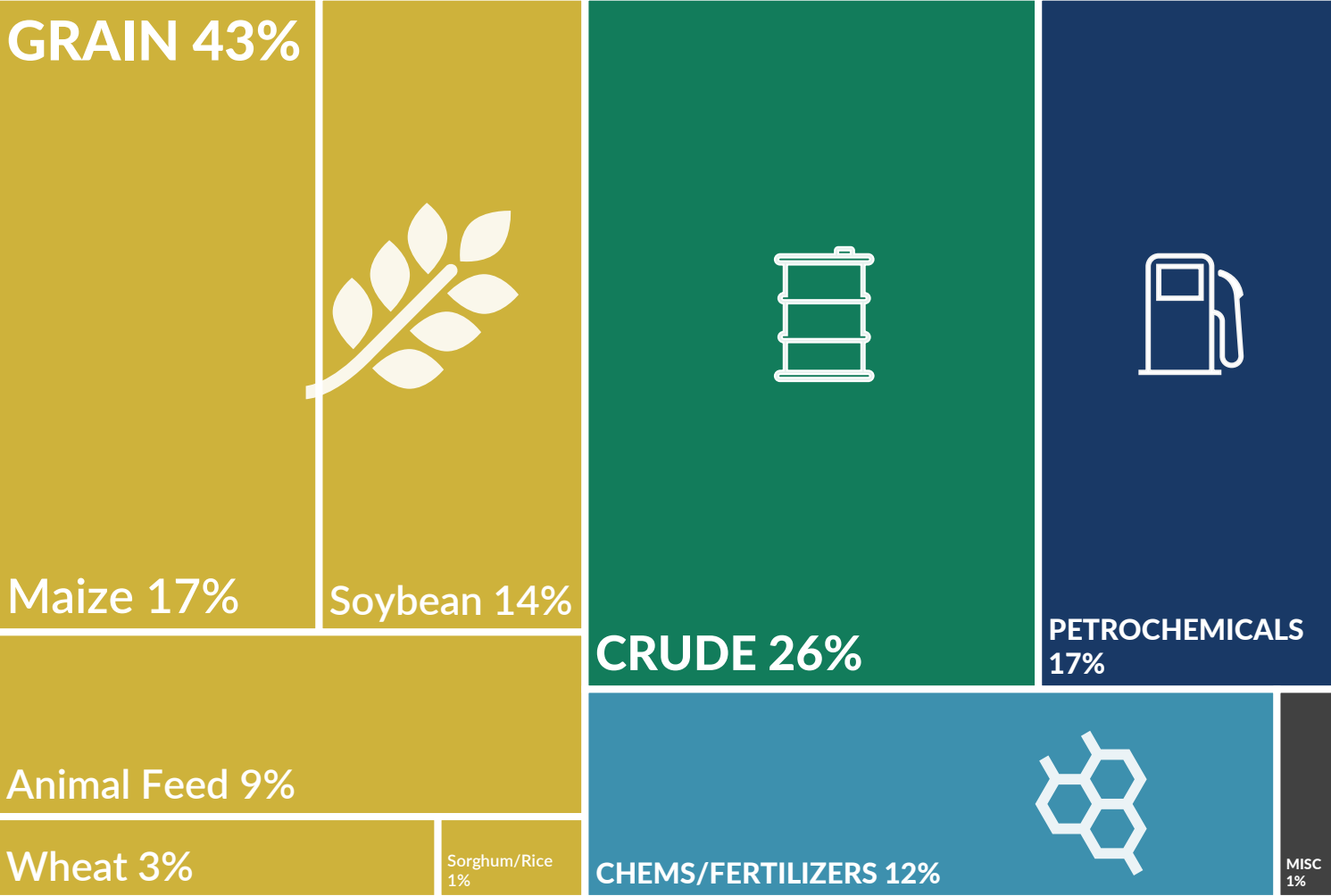
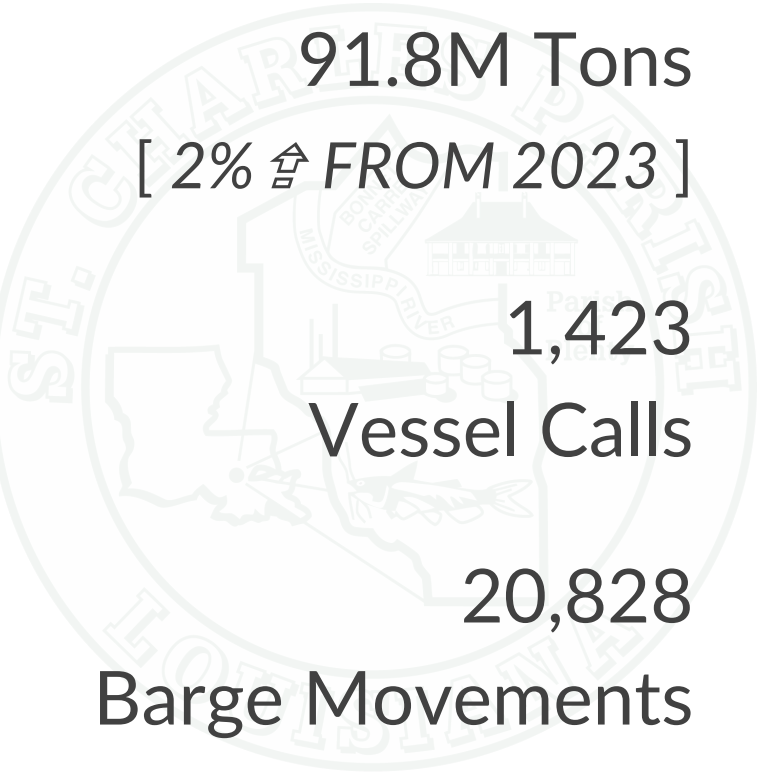
Shell

Valero[®]

Foreign Trade: 35M | Domestic Trade: 58M



COMMODITY BREAKDOWN [IN TONS, 2024]





PRIORITIES | AGRICULTURE



- Landside dust system
reduce dust emission
- Barge wall systems
improve efficiency
- Dock reinforcements
maintain production
- Storage expansion



- Supporting its recent expansion



- Assisting its grant funding

PRIORITIES | INFRASTRUCTURE



- \$5.8B ultra-low carbon steel plant in Ascension Parish
- Port of South Louisiana to build deep water dock
- Imports: 3.6M tons of iron ore
- Exports: 2.7M tons of coils to Hyundai plants around the U.S.
- 70% lower emissions
- Jobs: 1,300 direct; 4,100 indirect





PRIORITIES | ENERGY DIVERSITY

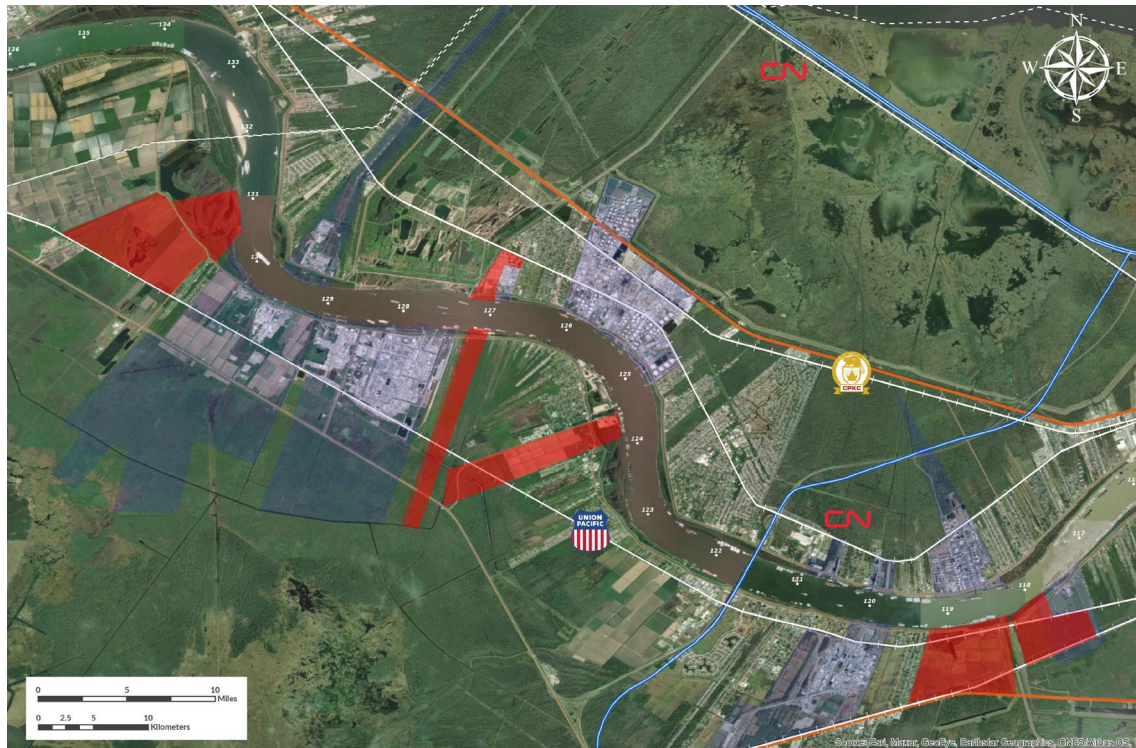


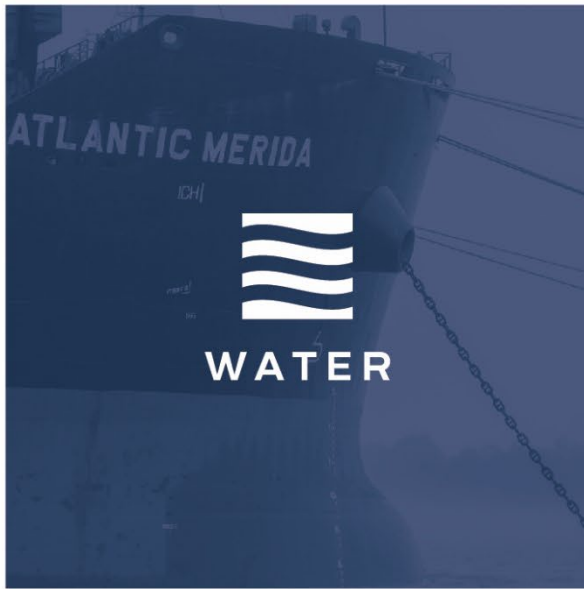
Woodland Biofuels	Life for Tyres	H ₂ theFuture
<ul style="list-style-type: none">▪ \$1.35B waste biomass to renewable biofuels▪ Largest renewable natural gas production plant in the world▪ Jobs: 110 direct 259 indirect	<ul style="list-style-type: none">▪ \$46M end-of-life tire recycling into high-quality, sustainable commodities<ul style="list-style-type: none">▪ Advanced biofuel feedstock▪ Recovered carbon black▪ Scrap steel▪ Jobs: 46 direct 151 indirect	<ul style="list-style-type: none">▪ \$6.75M low-carbon emission, hydrogen-based methanol-fueled vessel refueling station▪ First of its kind in the U.S.▪ \$3.4M grant EDA's <i>Build Back Better Regional Challenge</i>

PORT PARTNERS



Working closely with our local, regional, and state-wide partners to promote economic growth in the River Region!





**PORT OF
SOUTH LOUISIANA**

Celebrating 65 Years in Operation!

PAUL MATTHEWS
Executive Director

 pmatthews@portsl.com

 985.652.9278



A BETTER WAY TO CARGO.