

ST. CHARLES PARISH, LOUISIANA

Two certain St. Charles Parish Louisiana parcels of land being situated in Section 13, Township 13 South, Range 20 East, and Sections 39 and 66, Township 13 South, Range 20 East of buildings and improvements, together with all of the and appurtenances thereunto belonging or in anywise appertaining and being more particularly described as follows:

PARCEL 1:

Beginning at a concrete monument in the South right-of-way line of Louisiana State Highway No. 18 at the Northwest corner of the common line between Parcel 1 and owned by Union Carbide and this parcel; (C.O.B. 56, Folio 302)

THENCE, along the said common line with Union Carbide North 17°53'01" East 944.54 feet to the monument at the Northwest corner of this parcel;

THENCE, in a Southwesterly direction following the meander of the said mean low water line for a distance of 135 feet more or less to a point in the common line with J. C. Triche for the Northwest corner of this parcel;

THENCE, along the said common line with J. C. Triche South 71°26'02" West 120.00 feet to an iron rod set on a rock slope at 97.83 feet, passing on from the top edge set a right-of-way line of Louisiana State Highway No. 18 at 956.18 feet to an iron rod set in the North of a distance of 120.47 feet to State Highway No. 3127 (C.O.B. 111, Folio 287) for the Southwest corner of this parcel;

THENCE, along the said Louisiana Highway No. 3127 right-of-way line to the southeast corner of a concrete monument located in the said common line with Union Carbide North 17°53'01" East 944.54 feet to an iron rod set in the said common line with Union Carbide North 17°53'01" East 944.54 feet for the Southwest corner of this parcel; (C.O.B. 56, Folio 302)

THENCE, along the said common line with Union Carbide North 17°53'01" East 944.54 feet to a concrete monument located in the said common line with Union Carbide North 17°53'01" East 944.54 feet for the True Point of Beginning;

Said parcel contains 47.83 acres more or less.

PARCEL 2:

Commencing at a concrete monument located at the common corner of Sections 21, 40 and 66 of Township 13 South, Range 20 East, thence along the common line between Sections 21 and 66 South 86°28'30" West 100.00 feet to a concrete monument located between Sections 21 and 66 in the common line between Union Carbide Chemicals and Plastics Company, Inc. (C.O.B. 56, Folio 302) Southwest corner of this parcel;

THENCE, along the said common line with Union Carbide North 17°53'01" East 2160.94 feet to a 3 1/2" x 3 1/2" x 3 1/2" iron rod set in the North East corner of this parcel;

THENCE, along the said South 71°10'00" East 232.92 feet to an iron rod set in the North East corner of this parcel;

THENCE, along the said common line with J. C. Triche South 71°26'02" West 2044.30 feet to an iron pipe set in the common Section Line between Sections 25 and 66, the Southeast corner of this parcel;

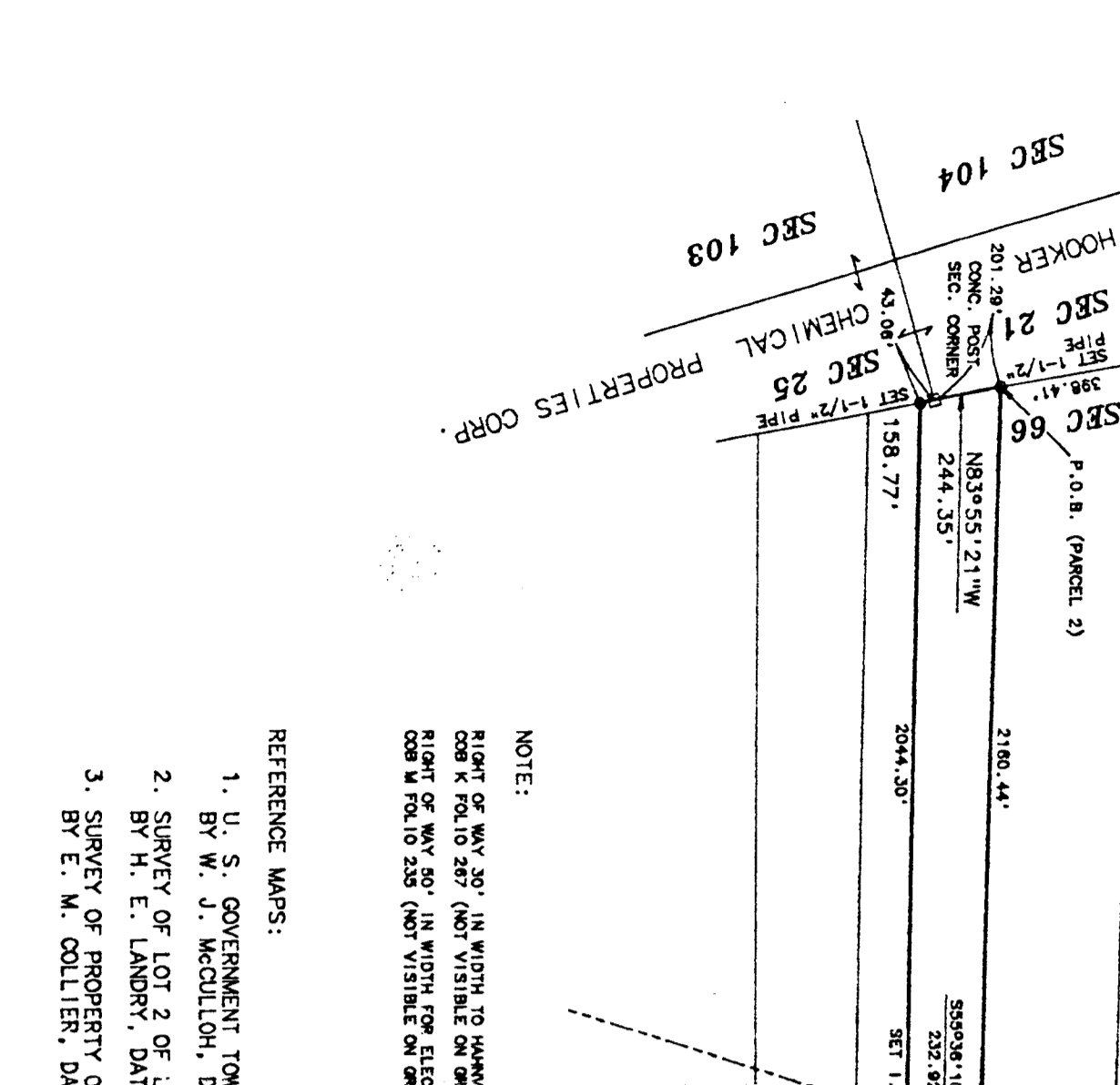
THENCE, along the said common section line North 83°55'21" West 254.06 feet to an iron rod set in the common corner of Section 24 and 25 at 43.06 feet and an iron pipe set in the common corner of this parcel;

THENCE, along the said common line with Union Carbide, the True Point of Beginning.

Said parcel contains 11.16 acres, more or less.

NOTE:

THE TITLE DESCRIPTION READS 128 FEET MORE OR LESS BY 80 ARPENTS BETWEEN PARALLEL LINES.



NOTE:  
 BOUNDARY LINES ARE SHOWN BY DASHED LINES AND BOUNDARY MONUMENTS ARE SHOWN BY SOLID LINES.  
 ALL DISTANCES ARE IN FEET AND DECIMALS THEREOF.  
 ALL ANGLES ARE IN DEGREES, MINUTES AND SECONDS.  
 ALL BEARINGS ARE TRUE BEARINGS.  
 ALL DISTANCES ARE AS MEASURED ON THE GROUND.  
 ALL MONUMENTS ARE OF IRON PIPE UNLESS OTHERWISE NOTED.

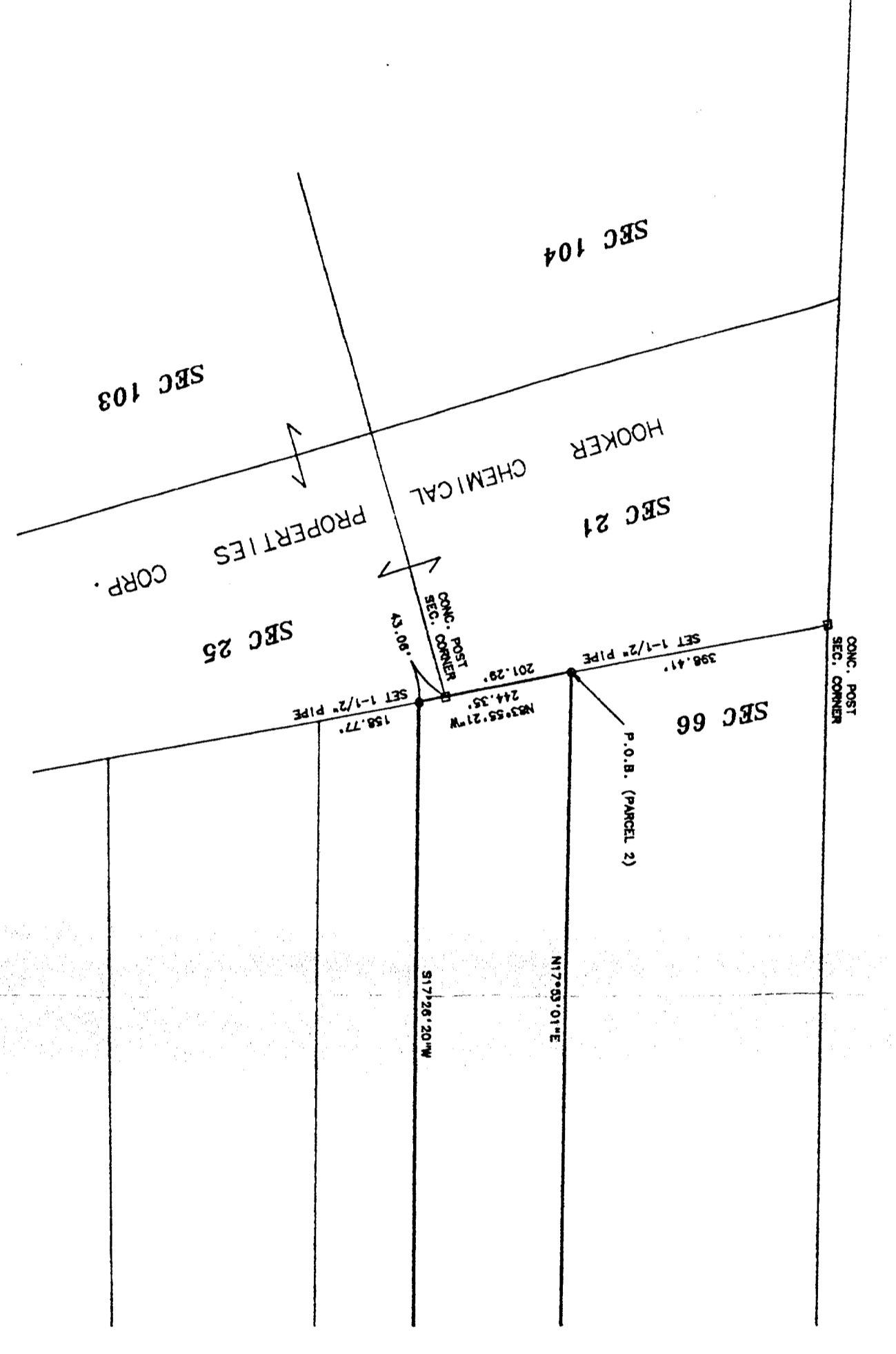
REFERENCE MAPS:  
 1. U. S. GOVERNMENT TOWNSHIP MAP (T13 & 13S-R20E)  
 2. SURVEY OF LOT 2 OF LOTS 1, 2 AND 3, TOWNSHIP 13 SOUTH, RANGE 20 EAST, ST. CHARLES PARISH, LOUISIANA, DATED OCTOBER 28, 1886  
 3. SURVEY OF PROPERTY OF JOHN THOMAS ET AL. BY E. M. COLLIER, DATED MAY 24, 1945

SURVEY OF PROPERTY  
 OF  
 THE ESTATE OF EDNA H. ROBI CHAUX  
 IN SECTION 13, T13S-R20E  
 & SECTIONS 39 & 66, T13S-R20E  
 ST. CHARLES PARISH, LOUISIANA  
 NUMBER 9, 1939  
 SCALE: 1" = 500'

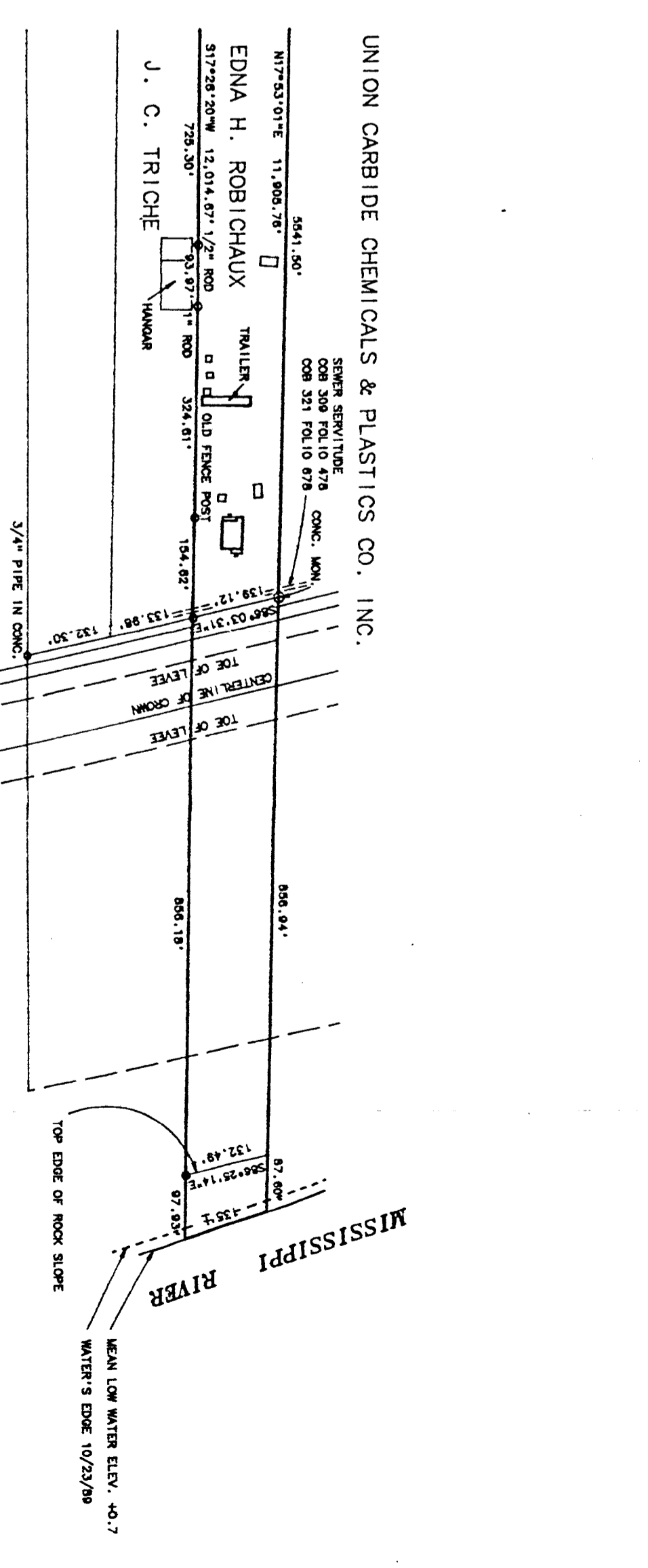
PARCEL 1 = 47.83 ACRES - INCLUDES LAKE, HWY. 18 R/W, LEVEE, LOTS & F.O.C. CO. R/W & SHELL OIL CO. R/W  
 PARCEL 2 = 11.16 ACRES  
 TOTAL = 58.99 ACRES

CERTIFIED TO: UNION CARBIDE CHEMICALS & PLASTICS CO., INC.  
 & COMMONWEALTH LAND TITLE INSURANCE CO.

LUCHIN & GASSER  
 Land Surveyor  
 1026 Gassen Street  
 Luling, Louisiana 70070



SCALE: 1" = 200'



UNION CARBIDE CHEMICALS & PLASTICS CO., INC.  
 EDNA H. ROBI CHAUX  
 J. C. TRICHE