

St. Charles Parish

Parish President's Report

July 5, 2022



Public Works Project Updates

Fairfield &
Oakland

Bottleneck

Ama Pump
Station
Update

Des
Allemands
Bulkhead

Primrose Canal



Destrehan Drainage Town Hall Meeting

DESTREHAN DRAINAGE



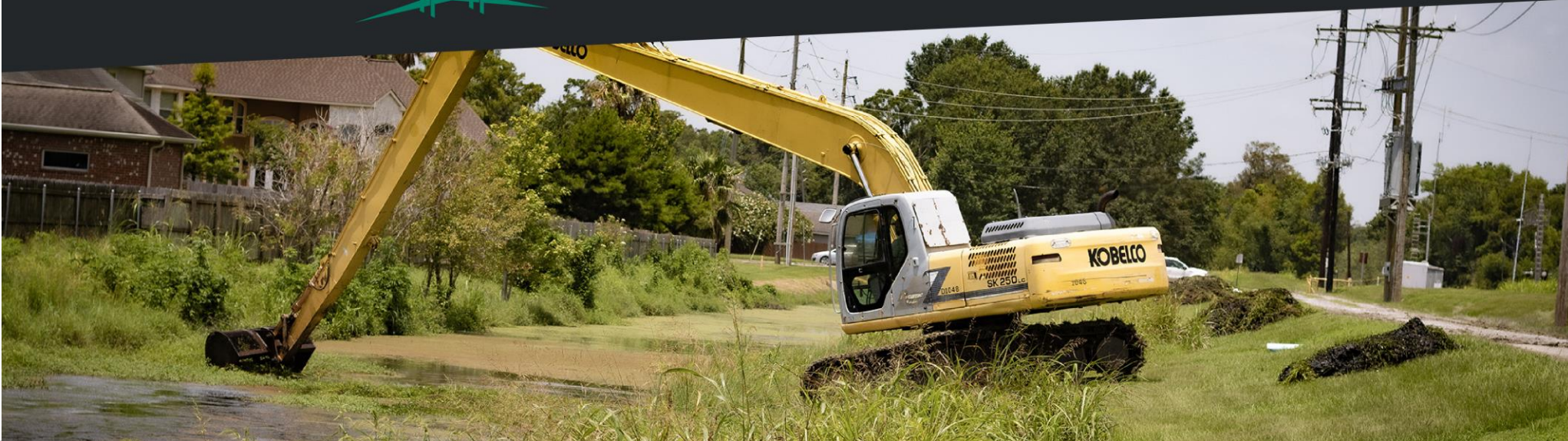
**TOWN HALL
MEETING**

Wednesday, July 13, 2022

6:00 p.m. - 7:30 p.m.

Ormond Fire Station

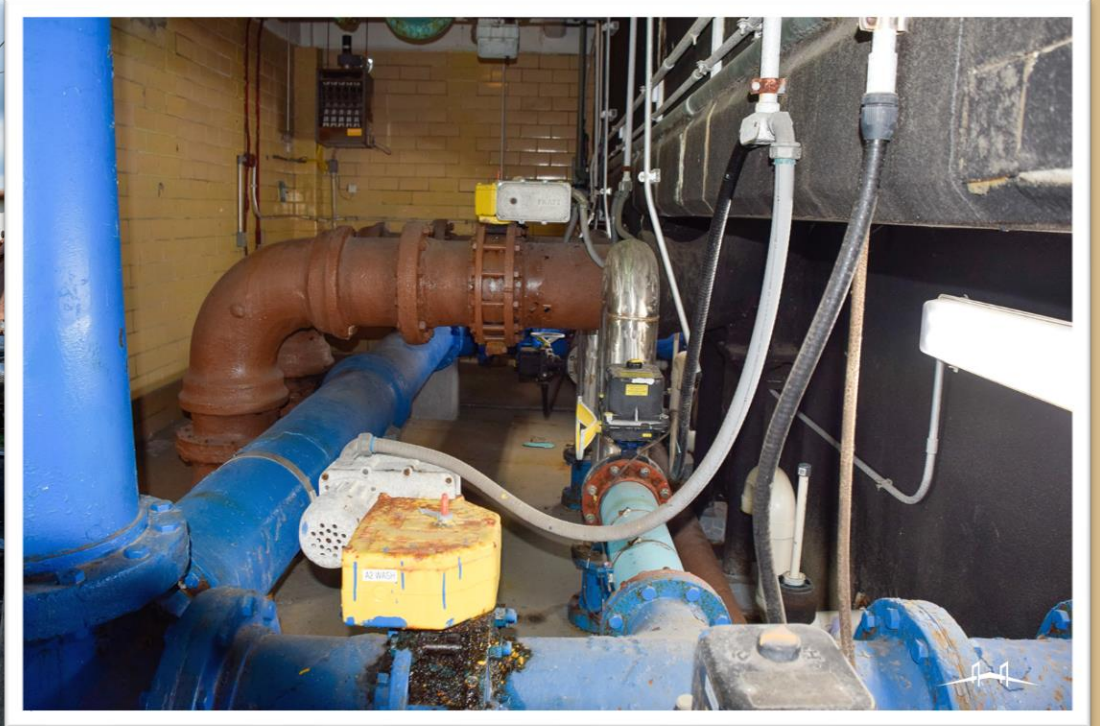
1901 Ormond Blvd., Destrehan, LA



West Bank Yard Ribbon Cutting



Clarifier "A"



Meter Reading Infrastructure



32nd Annual Independence Day Celebration



Veterans Memorial Plaza

www.stcharlesparish.gov/bricks

Residents »

Veterans Memorial Plaza Brick Information

Font Size: [+](#) [-](#) [Share & Bookmark](#) [Feedback](#) [Print](#)

St. Charles Parish is excited to announce bricks honoring Veterans at the Veterans Memorial Plaza are now available for purchase. Order forms should be filled out and submitted with payment to the United Way of St. Charles at 13145 Highway 90 in Boutte. Order forms can be found [here](#).

Each brick will cost \$150 and can be purchased by a veteran or in memory of a veteran. We ask that proof of service is provided in the form of a DD214 or service photograph if applicable. All proceeds from brick sales will help cover costs associated with maintaining the Plaza and events held there for veterans.

The Veterans Memorial Plaza is adjacent to the Edward A. Dufresne Community Center in Luling and will honor all five branches of the Armed Forces. The site will also house the state's second Gold Star Families Memorial Monument, representing the legacy of loved ones who have paid the ultimate sacrifice for freedom.

A Purple Heart Memorial will also stand at the Plaza, and the POW/MIA statue will be relocated from the Courthouse to the site.

St. Charles Parish has a long legacy of military service, with more than 300 veterans who have served our country. Once completed, the Plaza will serve as a host for all Veterans Day Ceremonies and other tributes to the Armed Forces in the parish.

DOCUMENTS

[Veteran Memorial Brick Sale Letter](#)

[Veteran Memorial Brick Form](#)



Parks and Recreation



A graphic for Fall Sports registration. The background is a dark, moody image of stadium lights at night. A red banner across the middle contains the text "REGISTRATION JUNE 1 - JULY 11". Below this, the words "FALL SPORTS" are written in large, bold, white letters. At the bottom, a dark banner lists the sports: "Fall Baseball, Fall Tennis, Tackle Football, Flag Football, Volleyball, Cheerleading". A small logo of a stylized building is at the bottom center.

REGISTRATION JUNE 1 - JULY 11

FALL SPORTS

Fall Baseball, Fall Tennis, Tackle Football, Flag Football, Volleyball, Cheerleading

SENIOR CASINO BUS TRIP



**Wednesday,
July 20, 2022**

Hollywood Casino
Bay St. Louis

Register Online: www.scpparksandrec.com
Under Programs Tab, Click Senior Athletics,
Click link for individual trips

For assistance: Call Parks and Recreation at 985-783-5090

Registration Closes July 13th.

GFOA Certificate of Achievement



May Sales Tax

	2021	2022		
January	3,182,299.23	3,438,056.19	255,756.96	8.04%
February	2,894,877.58	2,936,796.46	41,918.88	1.45%
March	3,779,275.54	3,990,492.32	211,216.78	5.59%
April	2,901,422.16	3,175,474.28	274,052.12	9.45%
May	3,247,281.02	3,374,967.82	127,686.80	3.93%
June	3,625,287.15			0.00%
July	2,865,826.99			0.00%
August	2,668,577.43			0.00%
September	3,178,606.66			0.00%
October	3,335,954.22			0.00%
November	3,083,373.36			0.00%
December	4,396,592.15			0.00%
	39,159,373.49	16,915,787.07		
Total To Date	16,005,155.53	16,915,787.07	910,631.54	5.69%

WWL PEP Station



Job Openings



visit StCharlesParish.gov/employment
to view all openings and apply.



ST. CHARLES PARISH