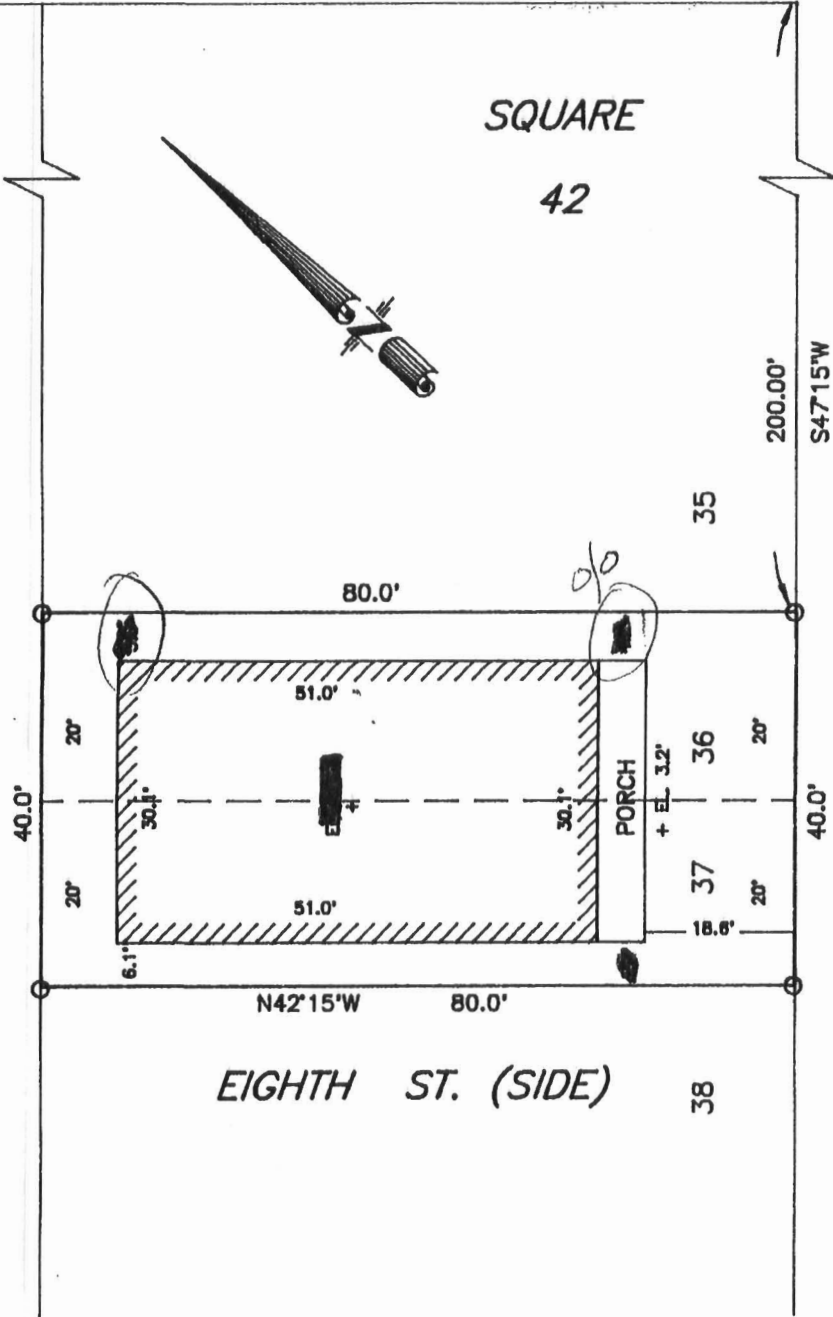


NINTH ST.

SQUARE

42

EAST HOOVER ST. (SIDE)



EAST EASY ST.

SURVEY OF LOTS 36 & 37 SQUARE 42 NEW SARPY SUBDIVISION LOCATED IN SECTION 8, T12S R8E AT NEW SARPY, ST. CHARLES PARISH, LA.

○ = DENOTES IRON ROD SET

FILE #	920035
SCALE:	1" = 20
DATE:	9/17/1992

R.P. Bernard
SURVEYOR

Prepared by the office of
R.P. BERNARD
St. Charles Parish, La.