

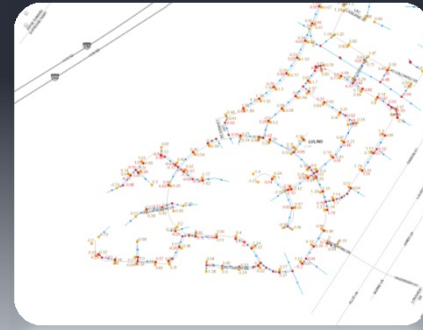
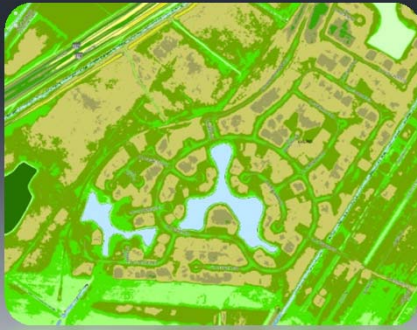
St. Charles Parish GIS Update

Presented To
The St. Charles Parish Council

By
Luis Martinez

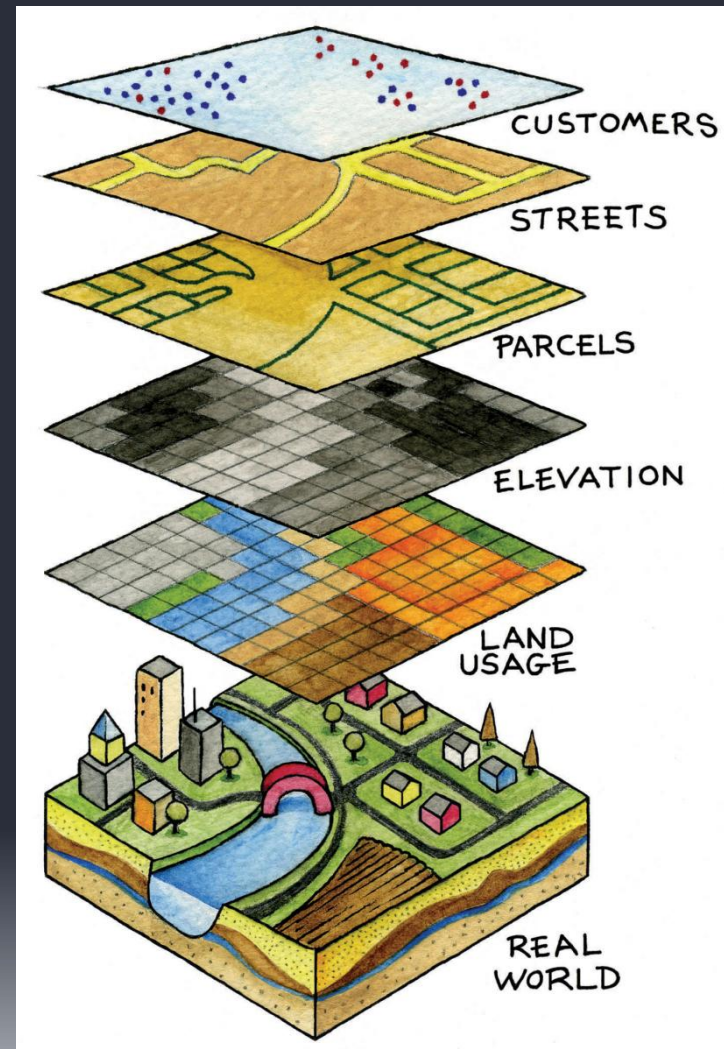
Geographic Information Systems Coordinator

December 1, 2014

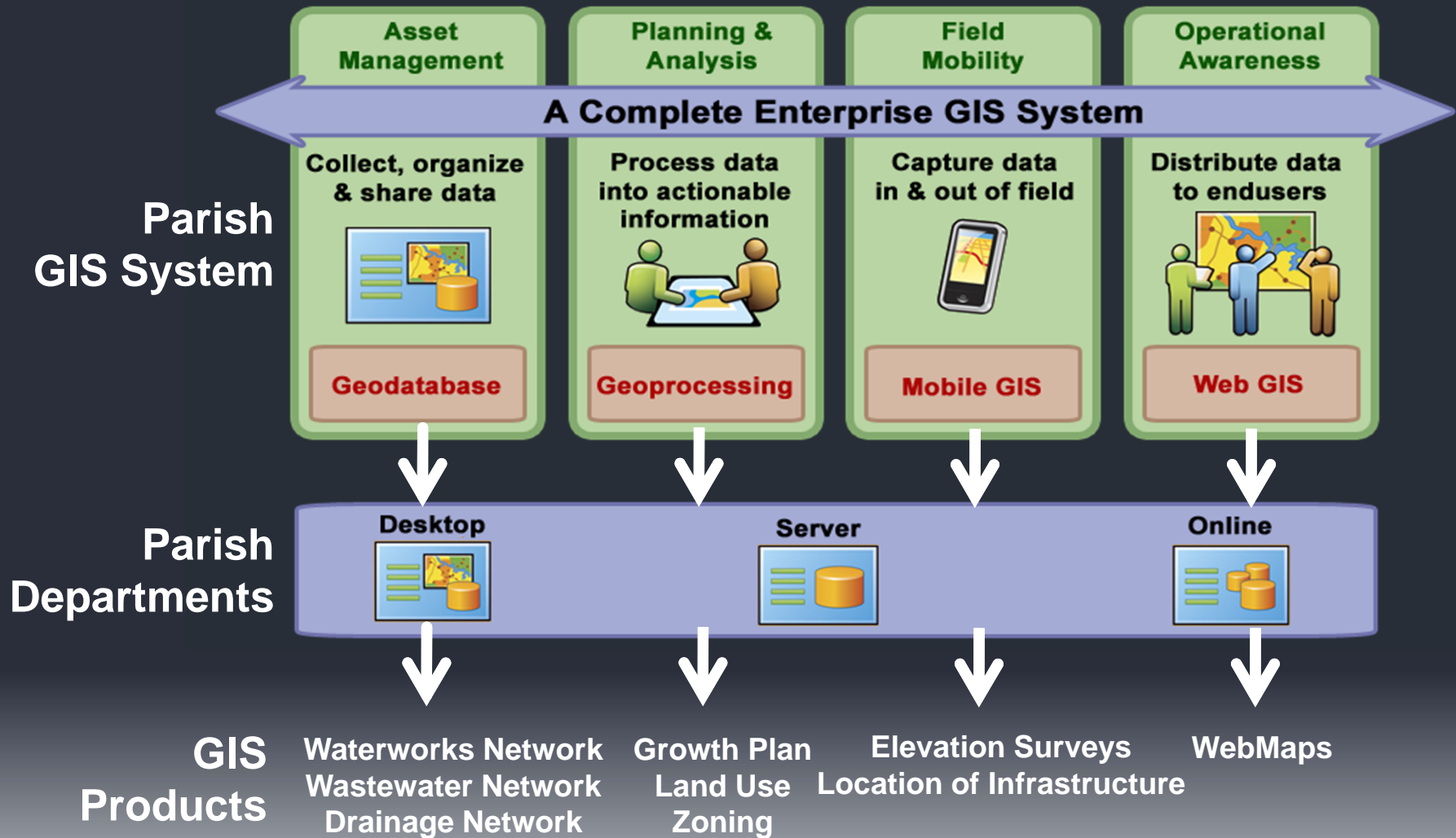


Overview

- Parish Geographic Information System (GIS)
- Current parish-wide Enterprise GIS
- GIS Efforts - 2014
- GIS Efforts - 2015

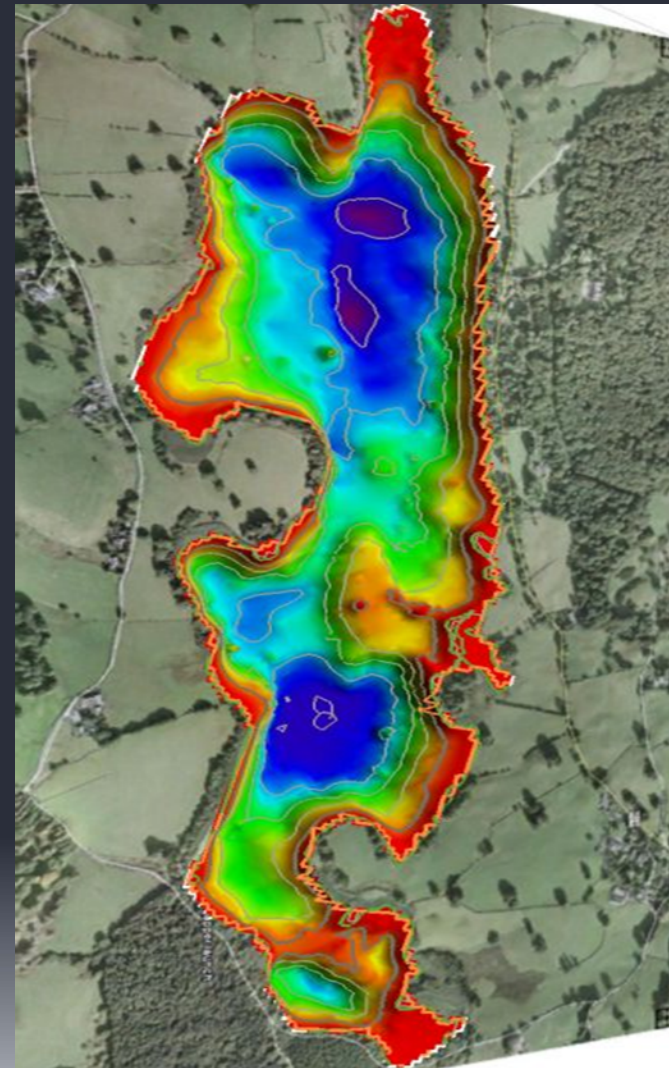


Current Parish GIS



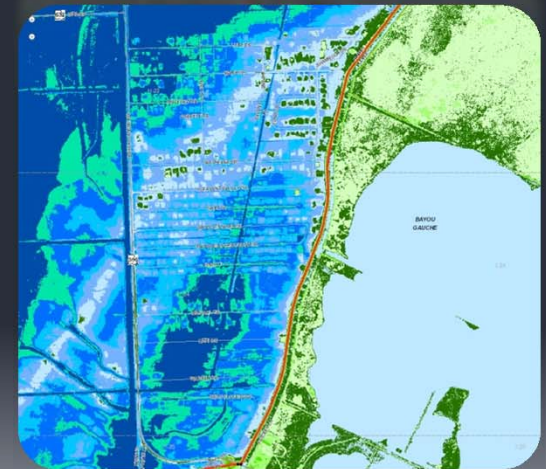
Major Projects - 2014

- FEMA – LAMP
- Levee Construction
- Street map update (Annually)
- Parcels Database
- Address Database
- Street Signs Database
- Aerial Photography
- LiDAR Data/Elevation Contours
- East bank Drainage GPS data
- Westbank Storm Protection
- Wastewater GPS data
- Waterworks Field Maps
- Web Mapping Application(s)



GIS Goals - 2015

- Complete Overhaul of GIS Database
- FEMA – LAMP Subsurface Profiles of Major Drainage Features
- Data Maintenance – accurate and up-to-date data possible Parish-wide
- Data Creation – creating new GIS layers for a growing St. Charles
- Create Data Distribution Portal – easy and secure access to data



Questions & Comments

Contact Information:

Luis Martinez

Geographic Information Systems Coordinator
171 Keller St.
Hahnville, LA 70057

Phone (985) 783 – 5096

Cell (504) 235 – 1902

Email: lmartinez@stcharlesgov.net

Web: www.stcharlesgov.net/gis