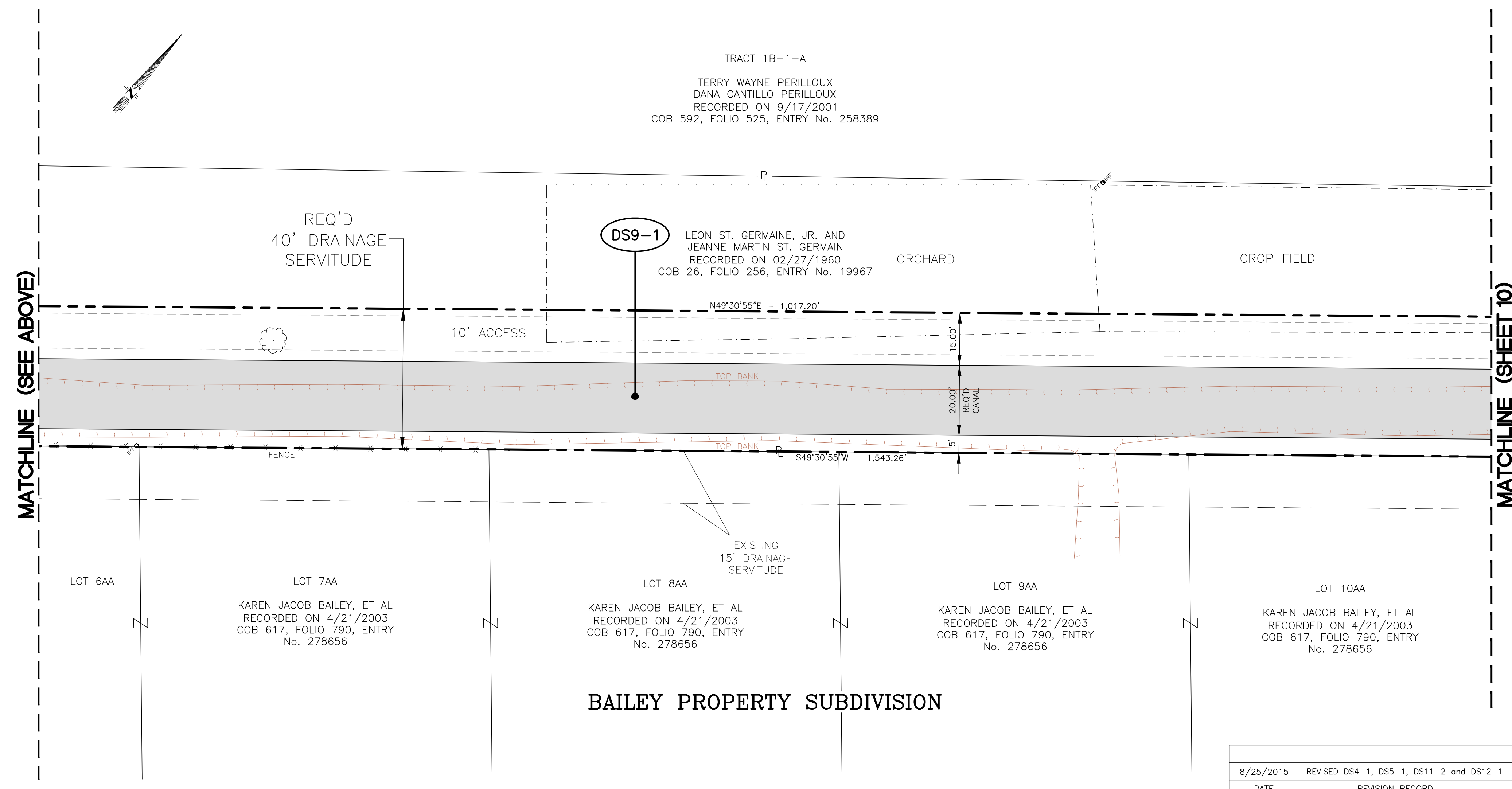
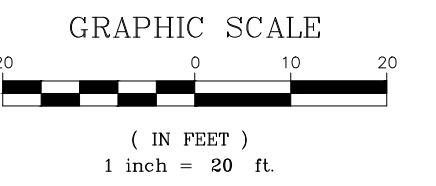


MATCHLINE (SEE BELOW)



MATCHLINE (SEE ABOVE)

MATCHLINE (SHEET 10)



DRAINAGE SERVITUDE
REQUIRED DRAINAGE SERVITUDES FOR
A PORTION OF COULEE CANAL
SECTIONS 6, 7, 17 & 42, T12S-R7E
TOWN OF MONTZ
ST. CHARLES PARISH, LA.

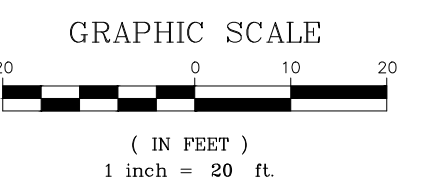
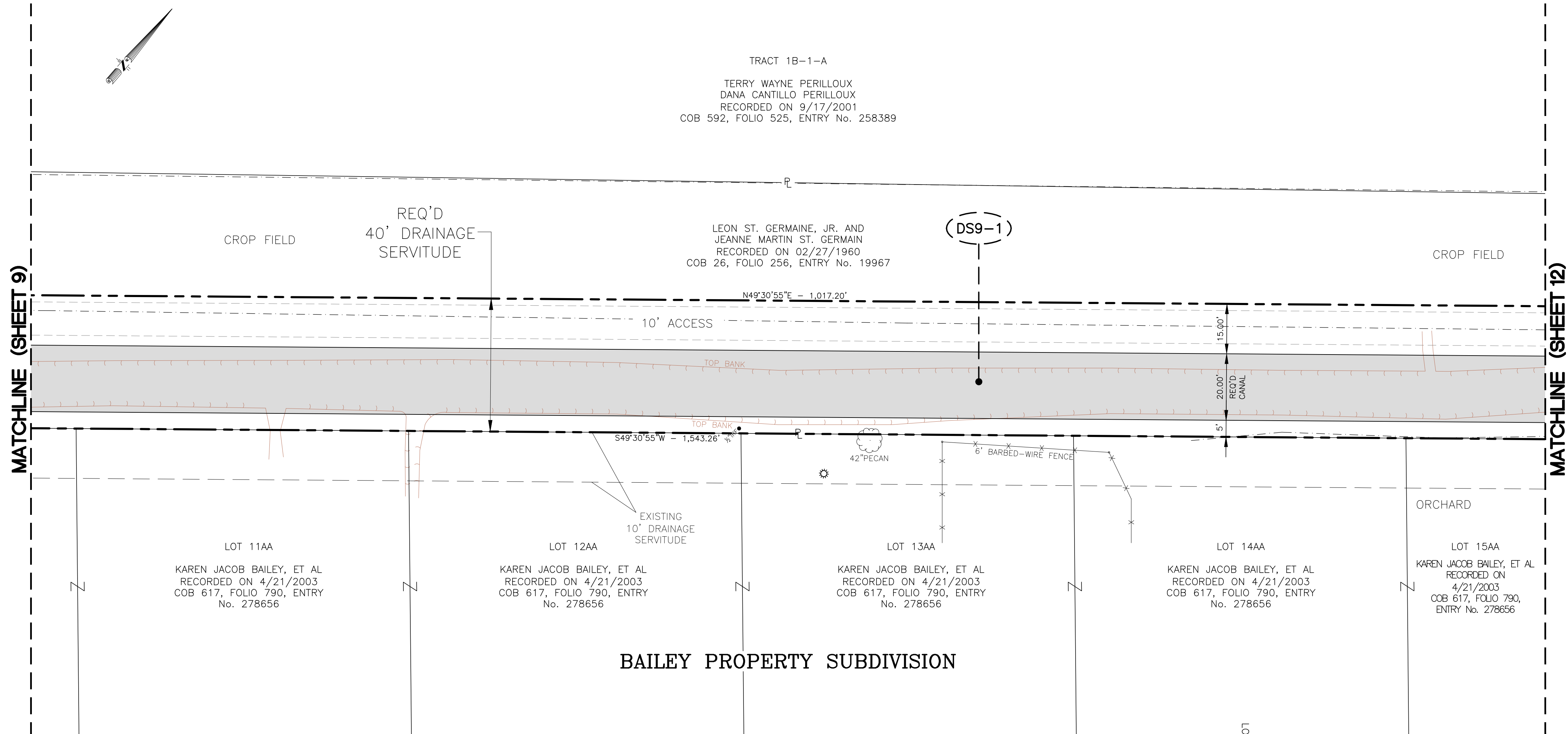


3445 N. CAUSEWAY BLVD., STE. 401, METAIRIE, LA. 70002 (504)838-6009

8/25/2015	REVISED DS4-1, DS5-1, DS11-2 and DS12-1	E.W.P.	SCALE: 1" = 20'	DRAWN BY: E.W.P.
DATE	REVISION RECORD	DRAWN BY	DATE: 4/21/2015	CHECKED BY: C.A.M.
			JOB NO. 413-2060106.004	SHEET NO. 9 OF 15

G:\DWGSET\413\005\2060106.004_Coulee_Canal_Improvements\DWG - Revised 8-25-2015\Coulee_Canal_Reqd_Drainage_Servitudes with Geometry and Topo Survey - Revised 8-25-15.dwg Aug 26, 2015 - 8:33am

SECTION 6
T12S-R7E



DRAINAGE SERVITUDE

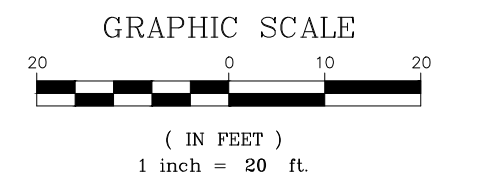
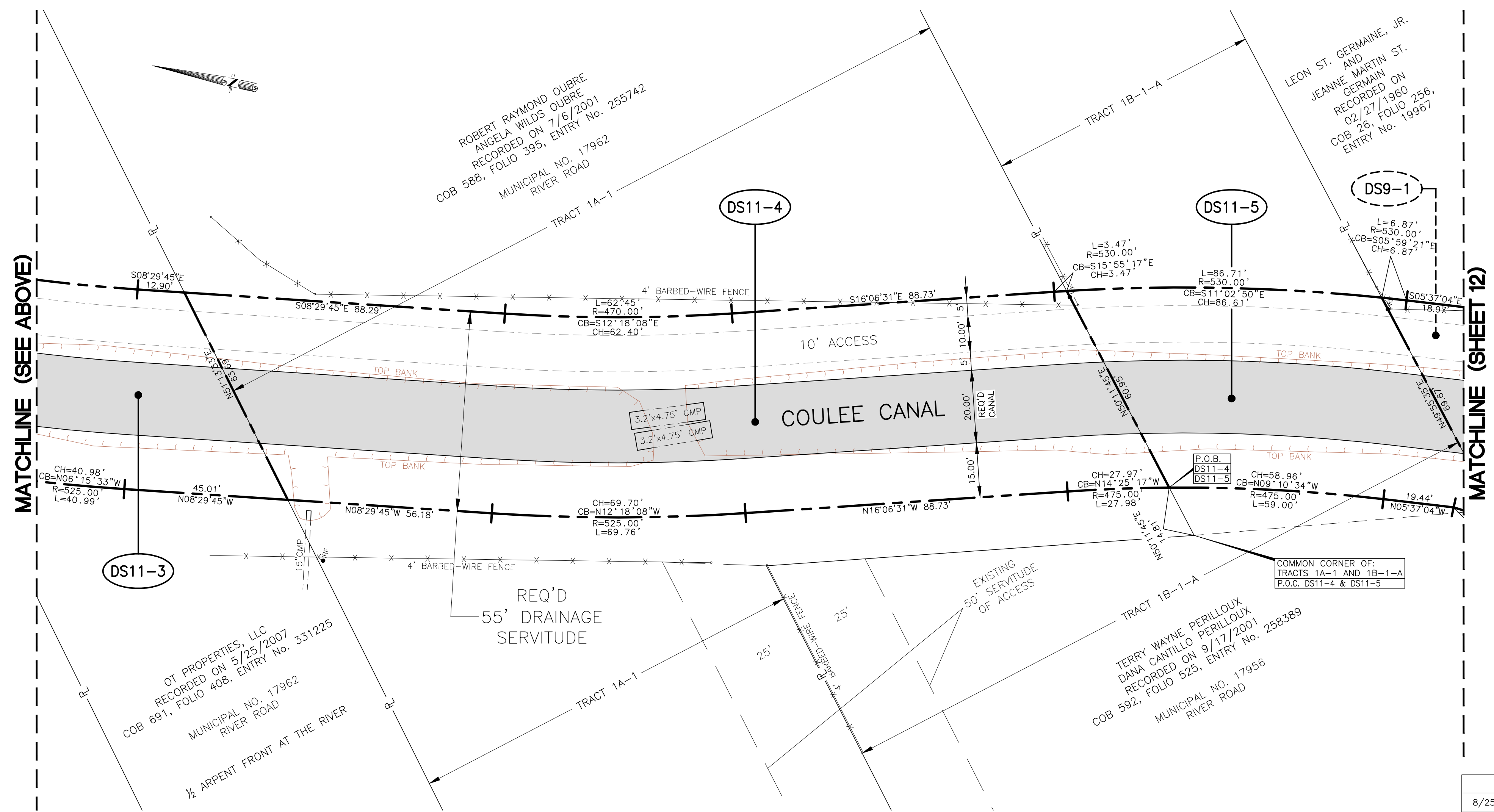
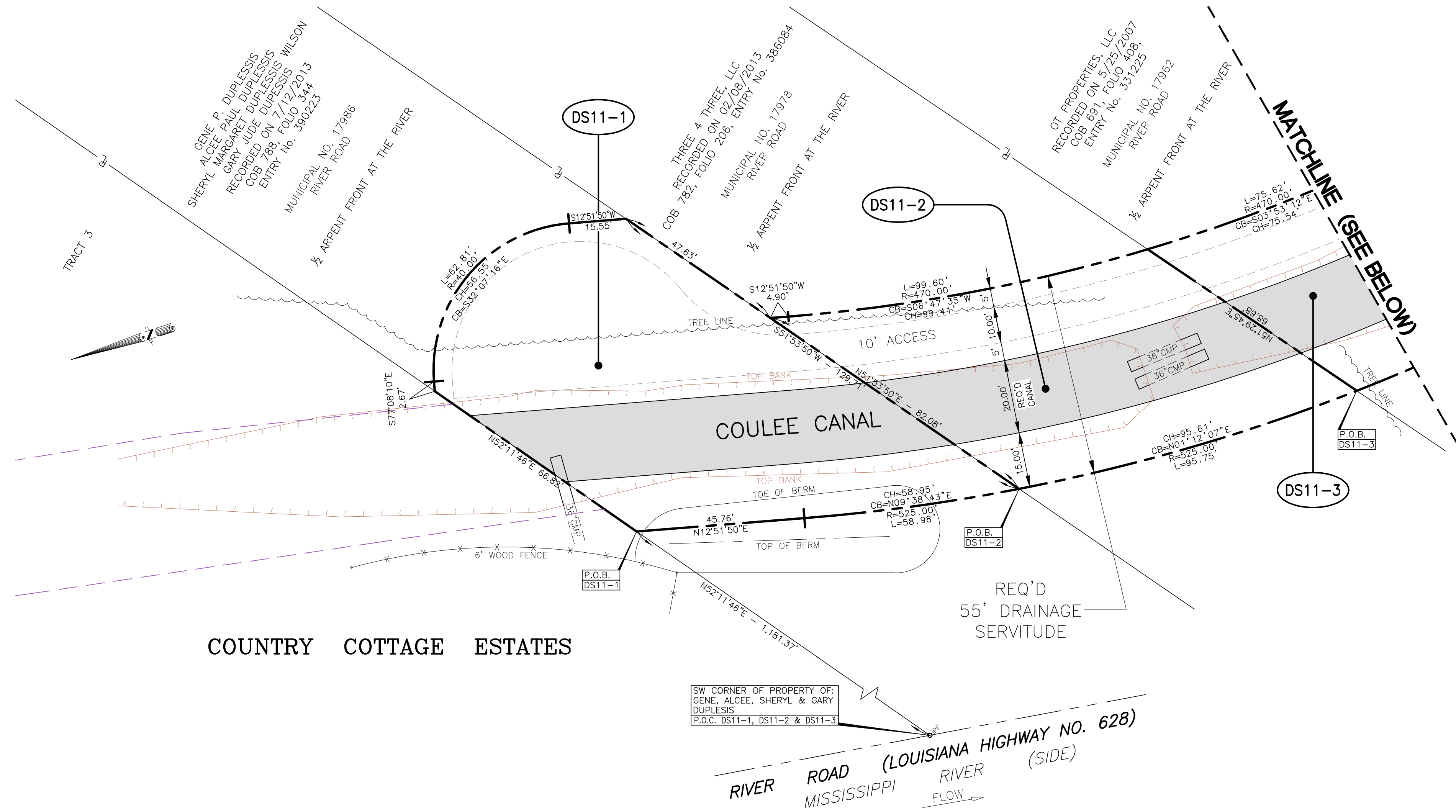
REQUIRED DRAINAGE SERVITUDES FOR
A PORTION OF COULEE CANAL
SECTIONS 6, 7, 17 & 42, T12S-R7E
TOWN OF MONTZ
ST. CHARLES PARISH, LA.



3445 N. CAUSEWAY BLVD., STE. 401, METAIRIE, LA. 70002 (504)838-6009

8/25/2015	REVISED DS4-1, DS5-1, DS11-2 and DS12-1	E.W.P.	SCALE: 1" = 20'	DRAWN BY: EWP
			DATE: 4/21/2015	CHECKED BY: CAM
			JOB NO. 413-2060106.004	SHEET NO. 10 OF 15

G:\DWGSET\413\005\2060106.004_Coulee Canal Improvements\DWG - Revised 8-25-2015\Coulee Canal Req'd Drainage Servitudes with Geometry and Topo Survey - Revised 8-25-15.dwg Aug 26, 2015 - 8:34am



DRAINAGE SERVITUDES
REQUIRED DRAINAGE SERVITUDES FOR
A PORTION OF COULEE CANAL
SECTIONS 6, 7, 17 & 42, T12S-R7E
TOWN OF MONTZ
ST. CHARLES PARISH, LA.

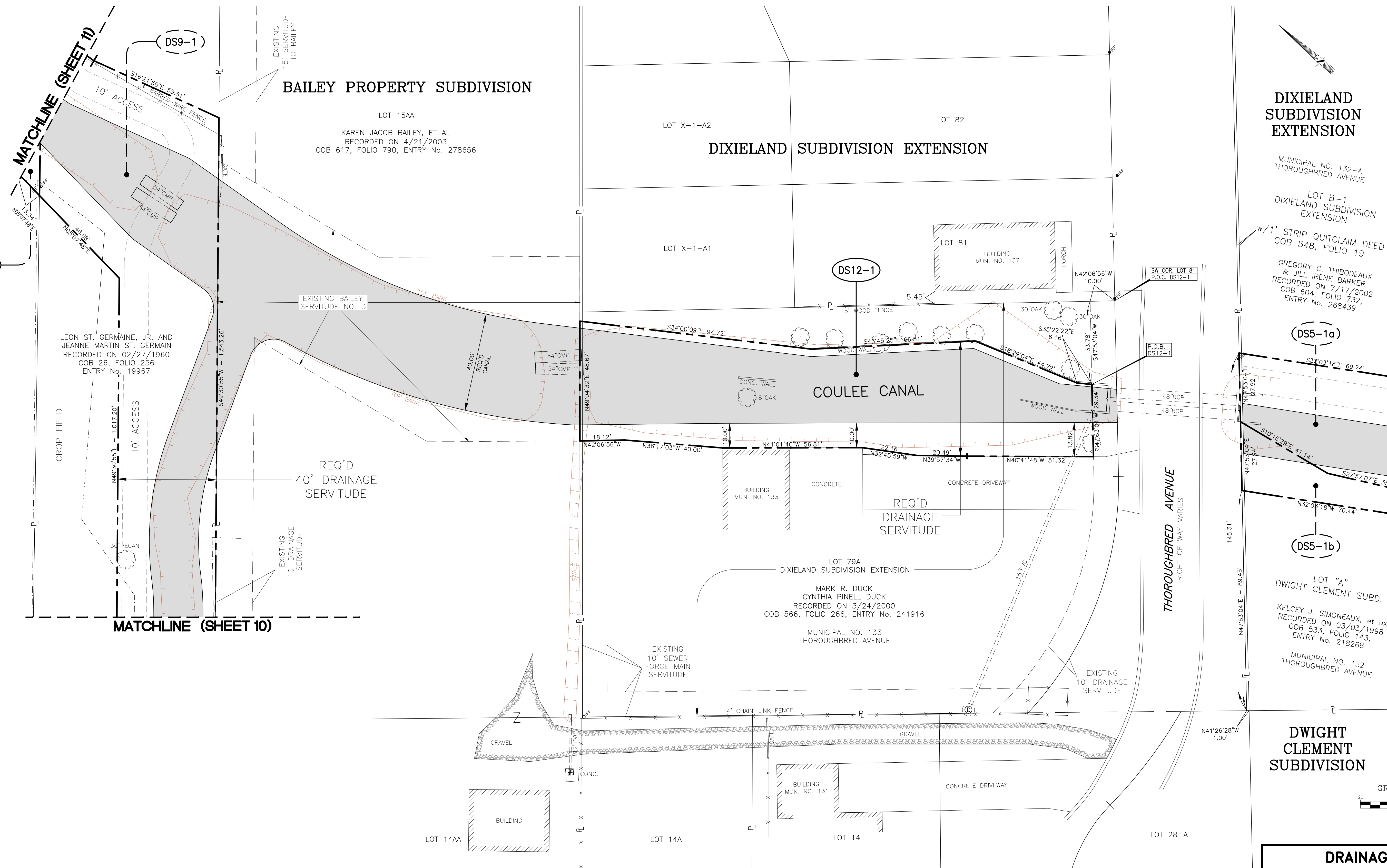


3445 N. CAUSEWAY BLVD., STE. 401, METAIRIE, LA. 70002 (504)838-6009

8/25/2015	REVISED DS4-1, DS5-1, DS11-2 and DS12-1	E.W.P.	SCALE: 1" = 20'	DRAWN BY: EWP
DATE	REVISION RECORD	DRAWN BY	DATE: 4/21/2015	CHECKED BY: CAM
			JOB NO. 413-2060106.004	SHEET NO. 11 OF 15

G:\DWG\5413\00512060106.004_Coulee_Canal_Improvements\DWG - Revised 8-25-2015\Coulee_Canal_Req'd_Drainage_Servitudes_with_Geometry_and_Topo_Survey - Revised 8-25-15.dwg Aug 26, 2015 - 8:35am

SECTION 6
T12S-R7E



DIXIELAND
SUBDIVISION
EXTENSION

MUNICIPAL NO. 132-A
THOROUGHBRD AVENUE

LOT B-1
DIXIELAND SUBDIVISION
EXTENSION

w/1' STRIP QUITCLAIM DEED
COB 548, FOLIO 19

GREGORY C. THIBODEAUX
& JILL IRENE BARKER
RECORDED ON 7/17/2002
COB 604, FOLIO 732,
ENTRY No. 268439

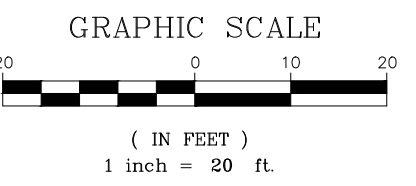
(SEE SHEET 5)

LOT "A"
DWIGHT CLEMENT SUBD.

KELCEY J. SIMONEAUX, et ux
RECORDED ON 03/03/1998
COB 533, FOLIO 143,
ENTRY No. 218268

MUNICIPAL NO. 132
THOROUGHBRD AVENUE

DWIGHT
CLEMENT
SUBDIVISION



DRAINAGE SERVITUDES

REQUIRED DRAINAGE SERVITUDES FOR
A PORTION OF COULEE CANAL
SECTIONS 6, 7, 17 & 42, T12S-R7E
TOWN OF MONTZ
ST. CHARLES PARISH, LA.



3445 N. CAUSEWAY BLVD., STE. 401, METAIRIE, LA. 70002 (504)838-6009

8/25/2015	REVISED DS4-1, DS5-1, DS11-2 and DS12-1	E.W.P.	SCALE: 1" = 20'	DRAWN BY: EWP
DATE	REVISION RECORD	DRAWN BY	DATE: 4/21/2015	CHECKED BY: CAM
			JOB NO. 413-2060106.004	SHEET NO. 12 OF 15

G:\DWG\513\0051206016.004 Coulee Canal Improvements\DWG - Revised 8-25-2015\Coulee Canal Req'd Drainage Servitudes with Geometry and Topo Survey - Revised 8-25-15.dwg Aug 26, 2015 - 8:36am