

ACT OF CORRECTION

UNITED STATES OF AMERICA

BY KREBS, LASALLE, LEMIEUX CONSULTANTS, INC. STATE OF LOUISIANA
 REPRESENTED BY: C. RANDALL DIXON, PLS PARISH OF ST. CHARLES

Before me, the undersigned Notary or Notaries Public, and in the presence of the subscribing witnesses, there appeared:

C. RANDALL DIXON, PLS

Who declared that the "Final Plat of Subdivision" entitled "Ashton Plantation, Phase 1-B," prepared by Krebs, LaSalle, LeMieux Consultants, Inc., dated April 21, 2006 certified to Ashton Plantation Estates, L.L.C. and filed in COB 669 Folio 563 Entry No. 318666 on May 25, 2006 contains an error in that it shows the bearing and distance along the line common to Lots 13 and 14, Sq. 1 to be N 05°24'31" E and a first distance of 90.70' to the northerly edge of the Lake Servitude and a second distance of 50.01 feet to the southerly edge of the Lake Servitude and the S.E. corner common to Lots 13 and 14, and the rear line of Lot 13 bearing S 83°38'18" E and a distance of 86.36' and the rear line of Lot 14 bearing S83°38'18" E and a distance of 66.09' contains an error, when in fact it should show a line between Lots 13 and 14 bearing S 14°44'35" W and a first distance of 97.11' and a second distance of 50.54 feet to the corner common to Lots 13 and 14, and the rear line of Lot 13 bearing S 83°38'18" E and a distance of 94.56' and the rear line of Lot 14 bearing S83°38'18" E and a distance of 57.89'.

AND that to correct said error, the attached plat was prepared on August 1, 2006 to show the correct bearing and measurements of Lots 13 and 14, Sq. 1, Ashton Plantation, Phase 1-B, AND that the attached plat is correct in all other aspects. APPEARER therefore corrects the original Final Plat of Ashton Plantation, Phase 1-B with the attached plat.

APPROVAL and ratification of the attached, plat is confirmed by the signatures of the CHAIRMAN OF THE PLANNING COMMISSION OR DIRECTOR OF THE DEPARTMENT OF PLANNING AND ZONING and the PARISH PRESIDENT thereon and reaffirmed with the same signatures hereon.

AND I, Notary, do hereby authorize and request the CLERK OF COURT FOR THE PARISH OF ST. CHARLES, LOUISIANA to attach said plat to the original record at COB 669 Folio 563 Entry No. 318666 reflecting the execution and recordation of this Act of Correction.

THUS DONE AND PASSED, on AUG. 4, 2006 at METairie ~~ST.~~
~~Jefferson~~ Charles Parish, State of Louisiana, in the presence of the undersigned witnesses, who have signed with me after due reading of the whole.

Rose M. Normand
 WITNESS
Keith W. H. Street
 WITNESS
C. Randall Dixon
 AUTHOR OF DOCS OR CURRENT OWNER
Phillip H. H. H.
 PLANNING CHAIRMAN OR DIRECTOR
Albert D. Legere
 PARISH PRESIDENT

C. Randall Dixon
 APPEARER

8/04/06
 DATE
8/21/06
 DATE
8/22/2006
 DATE

Jean M. Champagne
 NOTARY PUBLIC

Jean M. Champagne
 Notary Public
 St. Tammany Parish, LA
 My Commission is for life
 BAR Roll #04011

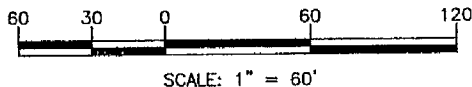
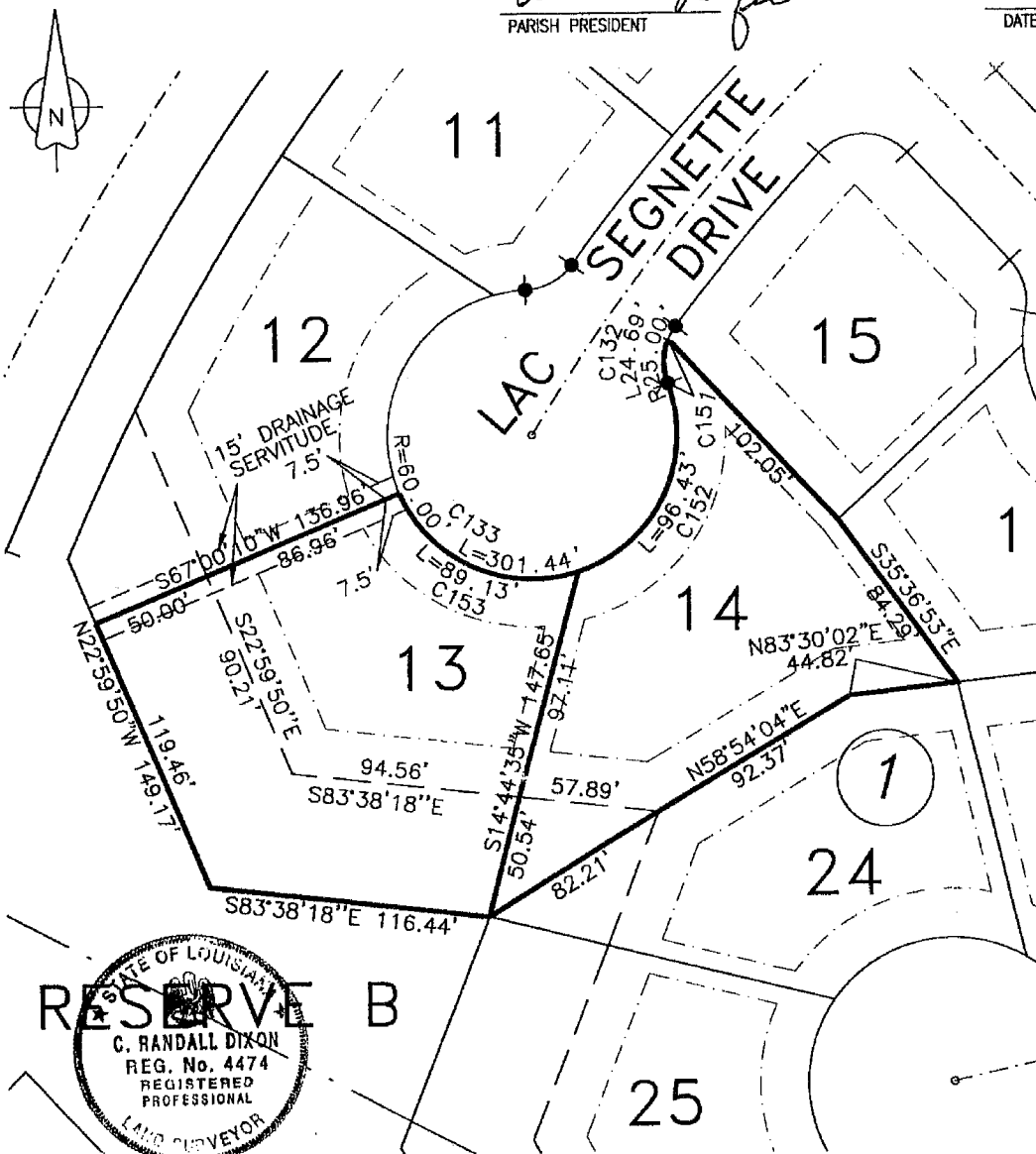
ACT OF CORRECTION FOR:
 LOTS 13 & 14, SQUARE 1
 ASHTON PLANTATION, PHASE 1-B
 SEC. 97, T13S-R20E
 ST. CHARLES PARISH, LA.

CHAIRMAN OF THE PLANNING COMMISSION OR
 DIRECTOR OF THE DEPT. OF PLANNING AND ZONING

PARISH PRESIDENT

8/21/06
 DATE

DATE



NOTES

THE SERVITUDES SHOWN ON THIS PLAN ARE LIMITED TO THOSE SET FORTH IN THE DESCRIPTION FURNISHED US AND THERE IS NO REPRESENTATION THAT ALL APPLICABLE SERVITUDES ARE REFLECTED OR SHOWN HEREON. THE SURVEYOR HAS MADE NO TITLE SEARCH OR PUBLIC RECORD SEARCH IN COMPILING THE DATA FOR THIS PLAN.

THE PERIMETER SHOWN SHALL NOT CONSTITUTE A LEGAL OPINION OF TITLE, AND SHALL NOT BE RELIED UPON FOR THAT PURPOSE. THERE IS NO WARRANTY THAT IT CONFORMS TO THE LEGAL TITLE, AND WAS MADE SOLELY ACCORDING TO THE INFORMATION PROVIDED THE SURVEYOR.

PREPARED AT THE REQUEST OF:
 Ashton Plantation Estates, L.L.C.

THIS IS TO CERTIFY THAT THE PROPERTY BOUNDARY SURVEY RECORDED HEREON WAS MADE ON THE GROUND UNDER MY DIRECT SUPERVISION, AND IS IN ACCORDANCE WITH APPLICABLE STANDARDS OF PRACTICE FOR PROFESSIONAL LAND SURVEYORS AS STIPULATED IN LOUISIANA ADMINISTRATIVE CODE TITLE 46:XXI, CHAPTER 25 FOR A CLASS "C" SURVEY.

DATED: August 01, 2006

BY C. Randall Dixon
 C. RANDALL DIXON, PLS
 LA. REGISTRATION No. 4474

KREBS, LaSALLE, LeMIEUX CONSULTANTS, INC.
 ENGINEERING • PLANNING • SURVEYING • HYDROLOGY • ENVIRONMENTAL
 3013 27TH ST. METAIRIE, LA. 70002 (504)837-9470
 1580 W. CAUSEWAY APPROACH MANDEVILLE, LA. 70471(985)624-5125