

**ACT OF REVOCATION  
OF DEDICATED PROPERTY  
BY ST. CHARLES PARISH**

**UNITED STATES OF AMERICA  
STATE OF LOUISIANA  
PARISH OF ST. CHARLES**

BE IT KNOWN, that on this 26<sup>th</sup> day of the month of January, in the year of Our Lord, two thousand nine (2010).

BEFORE ME, the undersigned Notary Public, duly commissioned and qualified, in and for the Parish of St. Charles, State of Louisiana, therein residing, and in the presence of the witnesses hereinafter named and undersigned;

**PERSONALLY CAME AND APPEARED:**

**THE HONORABLE V. J. ST PIERRE JR**, Parish President and Chief Executive Officer of the Parish of St. Charles, herein duly authorized by the provisions of the Ordinance No. 10-1-11 passed and adopted at a meeting of the St. Charles Parish Council held on January 25, 2010.

That pursuant to the above related ordinance, the Parish of St. Charles, through its governing authority, the St. Charles Parish Council, does hereby abandon and revoke the dedication of undeveloped Parsons Avenue right of way, said right of way being extended 561.81 feet to the north of Airline Highway (as of November 3, 1969), located in Parcel 5, Fairview Plantation, Section 39, Township 12 South, Range 9 East, St. Rose, St. Charles Parish, Louisiana; that the revocation of the above dedicated property herein is deemed to be in the best interest of the Parish, as such property no longer constitutes property utilized or needed by the Public.

Further, that pursuant to LA R.S. 48-701 et seq, the revocation of the dedicated property shall be made unto the present owners of the land contiguous thereto.

THUS DONE AND SIGNED on this 26<sup>th</sup> day of January, 2010, in the Parish of St. Charles, State of Louisiana, in the presence of the undersigned competent witnesses and me, Notary, after a reading of the whole.

WITNESSES:

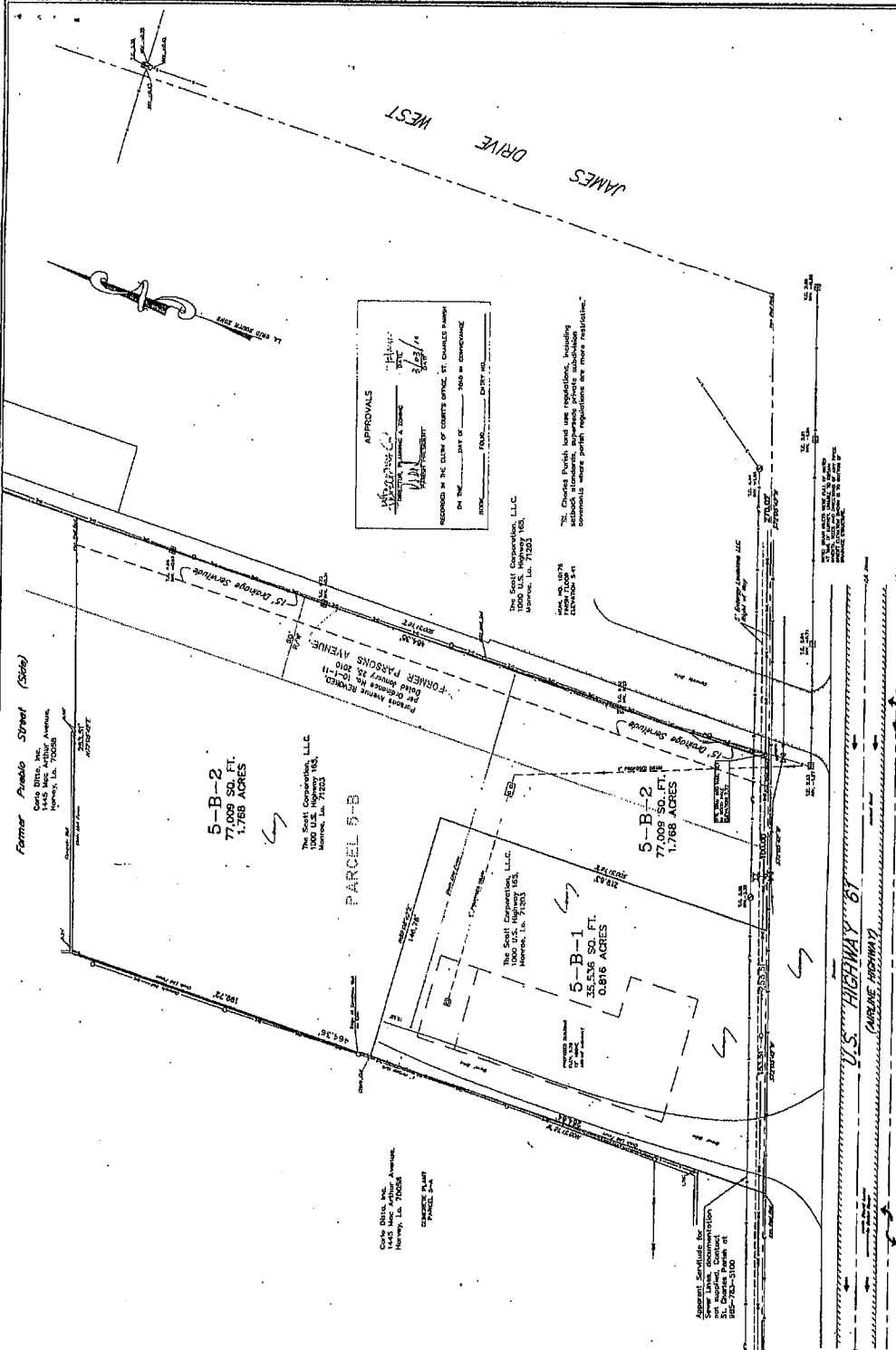
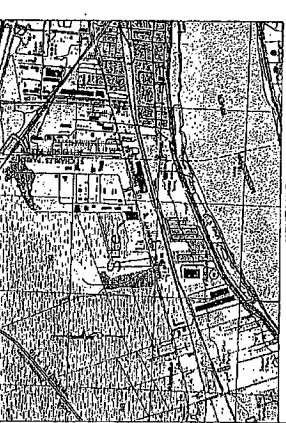
Barbara Jacob Tucker  
Valerie Berthelot

ST. CHARLES PARISH

By: W. J. St Pierre Jr.

V.J. St Pierre Jr.  
Parish President

[Signature]  
NOTARY PUBLIC

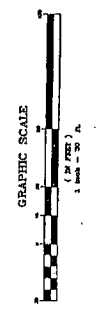


**APPROVALS**  
 RECORDS IN THE CLERK OF COURTS OFFICE, ST. CHARLES PARISH,  
 ON THE DAY OF \_\_\_\_\_ 2010 IN COMMENCEMENT  
 BOOK \_\_\_\_\_ PAGE \_\_\_\_\_  
 \_\_\_\_\_  
 \_\_\_\_\_

**THE Clerk Corporation, L.L.C.**  
 1000 U.S. Highway 90,  
 Harvey, LA 70059

THIS CHURCH PARISH LAND USE REGULATION, INCLUDING  
 SUBSOIL ALIENATION, SUPERSEDING PRIVATE SUBDIVISION  
 REGULATIONS, IS IN FULL FORCE AND EFFECT AS OF  
 DECEMBER 5, 2008.

- LEGEND**
- DRAINAGE MARKER
  - DRAINAGE CANAL
  - DRAINAGE VALVE
  - DRAINAGE PIPE
  - DRAINAGE INLET BOX
  - DRAINAGE BOX
  - TELEPHONE MARKER
  - TELEPHONE CABLE
  - TELEPHONE INLET
  - TELEPHONE TELEPHONE
  - TELEPHONE BOX
  - TELEPHONE VALVE
  - TELEPHONE PIPE
  - TELEPHONE INLET BOX
  - TELEPHONE BOX
  - TELEPHONE VALVE
  - TELEPHONE PIPE
  - TELEPHONE INLET BOX
  - TELEPHONE BOX
  - TELEPHONE VALVE
  - TELEPHONE PIPE
  - TELEPHONE INLET BOX
  - TELEPHONE BOX
  - TELEPHONE VALVE
  - TELEPHONE PIPE
  - TELEPHONE INLET BOX
  - TELEPHONE BOX
  - TELEPHONE VALVE
  - TELEPHONE PIPE



REVIEWED BY: [Signature]

**SCOTT EQUIPMENT COMPANY, L.L.C.**  
 SURVEY MADE AT THE REQUEST OF:  
 SCOTT EQUIPMENT COMPANY, L.L.C.

NO.	DATE	DESCRIPTION	BY
1	5/21/08	REVISIONS	BY
2	5/21/08	REVISIONS	BY
3	5/21/08	REVISIONS	BY
4	5/21/08	REVISIONS	BY
5	5/21/08	REVISIONS	BY
6	5/21/08	REVISIONS	BY
7	5/21/08	REVISIONS	BY
8	5/21/08	REVISIONS	BY
9	5/21/08	REVISIONS	BY
10	5/21/08	REVISIONS	BY

**GENERAL NOTES**

1. SEE GENERAL NOTES ON SHEET 5-B-1 FOR DETAILS OF ADJACENT PARCELS.
2. ALL DIMENSIONS ARE IN FEET AND INCHES.
3. ALL ANGLES ARE IN DEGREES AND MINUTES.
4. ALL BEARINGS ARE TRUE BEARINGS.
5. ALL DISTANCES ARE IN FEET AND INCHES.
6. ALL CURVES ARE CIRCULAR.
7. ALL CURVE DATA ARE AS SHOWN ON THIS SHEET.
8. ALL CURVE DATA ARE IN FEET AND INCHES.
9. ALL CURVE DATA ARE IN FEET AND INCHES.
10. ALL CURVE DATA ARE IN FEET AND INCHES.

**REVISIONS**

NO.	DATE	DESCRIPTION
1	5/21/08	REVISIONS
2	5/21/08	REVISIONS
3	5/21/08	REVISIONS
4	5/21/08	REVISIONS
5	5/21/08	REVISIONS
6	5/21/08	REVISIONS
7	5/21/08	REVISIONS
8	5/21/08	REVISIONS
9	5/21/08	REVISIONS
10	5/21/08	REVISIONS

**SCALE: 1" = 30'**  
 BOOK NO. 618-09  
 SHEET NO. 5-B-2

**RESUBDIVISION OF PARCEL 5-B-2**  
 A PARCEL OF THE PARCELS OF  
 INTO PARCELS 5-B-1, 5-B-2,  
 SECTION 39, T 12 N, R 9 E,  
 ST. CHARLES PARISH, LOUISIANA  
 BOOK NO. 618-09, PAGE 09, APRIL 6, 2009

**LANDMARK SURVEYING, INC.**  
 1445 West Highway 190,  
 Metairie, LA 70001  
 (504) 835-8800

**APPROVALS**

RECORDED IN THE CLERK OF COURTS OFFICE, ST. CHARLES PARISH,  
 ON THE DAY OF \_\_\_\_\_ 2010 IN COMMENCEMENT  
 BOOK \_\_\_\_\_ PAGE \_\_\_\_\_

**THE Clerk Corporation, L.L.C.**  
 1000 U.S. Highway 90,  
 Harvey, LA 70059

THIS CHURCH PARISH LAND USE REGULATION, INCLUDING  
 SUBSOIL ALIENATION, SUPERSEDING PRIVATE SUBDIVISION  
 REGULATIONS, IS IN FULL FORCE AND EFFECT AS OF  
 DECEMBER 5, 2008.