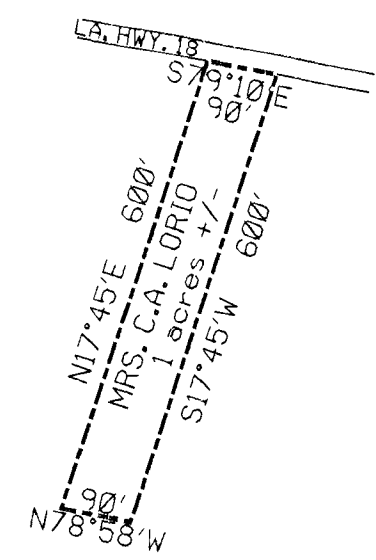


DETAIL "A"  
SCALE  
1" = 250'



DETAIL "B"  
SCALE  
1" = 250'

REFERENCE PLANS:

1. PLANS SHOWING PROPERTY OF THE ESTATE OF MRS. C.A. LORIO AT TAFT - ST. CHARLES PARISH, LA., & IN SECTION 17-T12S-R20E & SECTION 44-T13S-R20E TO BE ACQUIRED BY THE UNION CARBIDE CORPORATION TOGETHER WITH ALL ACCRETION, dated May 27, 1965 by E.M. Collier
2. PLANS SHOWING PROPERTY OF THE ESTATE OF A. & E. HAYDEL AT TAFT - ST. CHARLES PARISH, LA., & IN SECTION 17-T12S-R20E & SECTION 44-T13S-R20E TO BE ACQUIRED BY THE UNION CARBIDE CORPORATION TOGETHER WITH ALL ACCRETION, dated May 27, 1969 by E.M. Collier
3. SURVEY OF PROPERTY OF THE ESTATE OF EDNA H. ROBICHAUX IN SECTION 13, T12S-R20E ST. CHARLES PARISH, LOUISIANA, dated November 9, 1989 by Lucien C. Gassen, PLS.

Certified Correct:

*Nawzer Parakh*

Nawzer Parakh  
Vice President and Site Leader

July 18, 2006

Date

APPROVALS:

CHAIRMAN, PLANNING AND ZONING COMMISSION \_\_\_\_\_ DATE \_\_\_\_\_

CHAIRMAN, PARISH COUNCIL \_\_\_\_\_ DATE \_\_\_\_\_

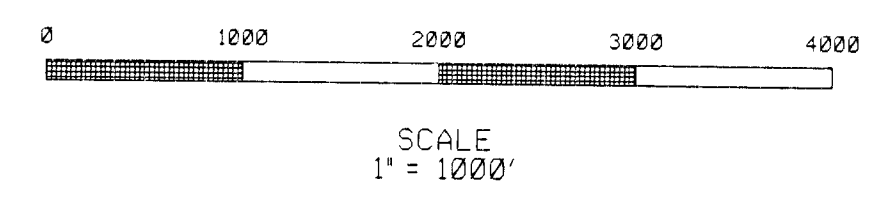
PARISH PRESIDENT \_\_\_\_\_ DATE \_\_\_\_\_

RECORDED IN THE CLERK OF COURT'S OFFICE,  
ST. CHARLES PARISH, ON THE \_\_\_\_\_ DAY  
OF \_\_\_\_\_, 2006 IN C.O.B. \_\_\_\_\_, FOLIO \_\_\_\_\_  
ENTRY NO. \_\_\_\_\_



**LEGEND**

- PROPERTIES TO BE ADDED TO THE UNION CARBIDE CORPORATION INDUSTRIAL AREA ARE FORMERLY THE A & E HAYDEL ESTATE, MRS. C.A. LORIO ESTATE, AND EDNA H. ROBICHAUX ESTATE
- EXISTING PROPERTIES LESS AND EXCEPT TO THE UNION CARBIDE CORPORATION INDUSTRIAL AREA
- UNION CARBIDE CORPORATION PROPERTY LINE



REV. MARK	REVISION	BY	CHK	APP	DATE	REV. MARK	REVISION	BY	CHK	APP	DATE	DRAWING ISSUE RECORD				DESIGNED	DATE	STATUS	PLANT NO.			
												ISSUE NO.	REV.	MATERIAL OR JOB SPEC.	BID	FAB	CONST	REF	STEPHEN SMITH	06/06		
																			STEPHEN SMITH	06/06		
																			DWIGHT FONTAINE	06/06		
																			DWIGHT FONTAINE	06/06		
																			DWIGHT FONTAINE	06/06		
																			PROJ. ENGR.			
																			UNION CARBIDE CORPORATION			
																			INDUSTRIAL AREA ADDITION			
																			SCALE			
																			1" = 1000'	EXHIBIT "B"		
																					PRINTED	
																						VER.

U:\ANT151\40434315\BANY DOCUMENTS\DOON\SCG INDUSTRIAL AREA PLAT.DGN 0915749 U434315 PROJECT.DGN