

An aerial photograph of a wetland area. In the upper portion, a long bridge spans across a body of water. Below the bridge, the landscape is a complex network of green marshes and dark water channels. The text is overlaid on this image.

Hurricane Ida's Impact

on

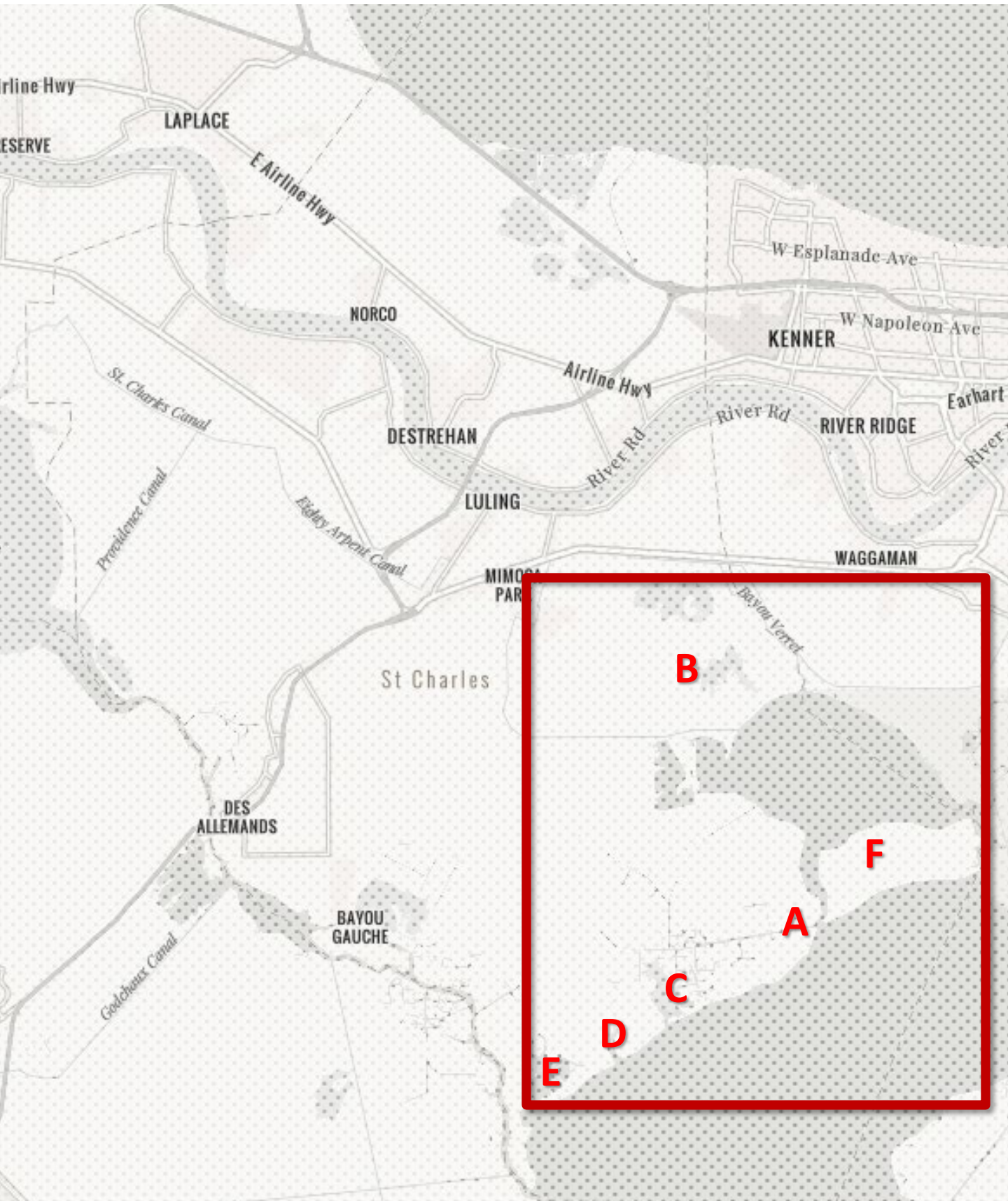
St. Charles Parish Wetlands

Presented to the St. Charles Parish

By Luis Martinez

January 9, 2023

Study Area Overview Map

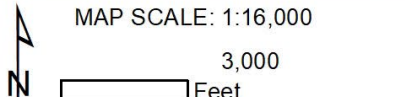


2020

Pre-Hurricane Ida



MAP SCALE: 1:16,000
3,000
Feet

A north arrow pointing upwards and a scale bar representing 3,000 feet.

Area A

2021

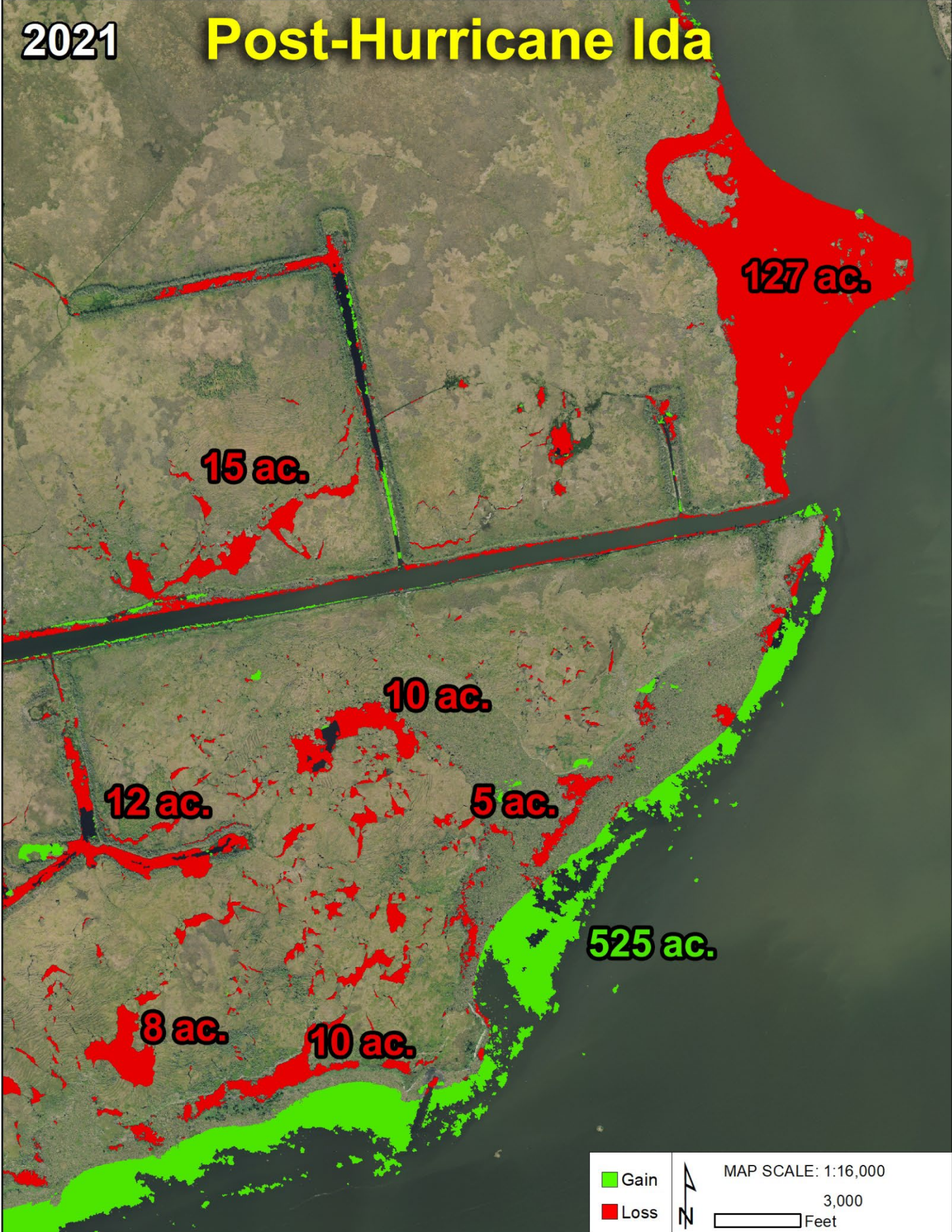
Post-Hurricane Ida



Area A

2021

Post-Hurricane Ida



Area A

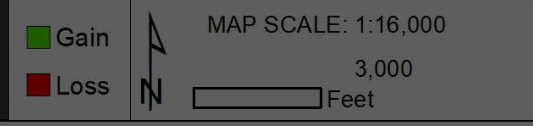
2021

Post-Hurricane Ida

Wetland Loss

More than 187 acres
equivalent to

141 Football Fields



MAP SCALE: 1:16,000
3,000 Feet

Gain
Loss

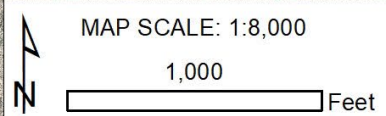
N

The legend shows a green square for 'Gain' and a red square for 'Loss'. To the right is a north arrow and a scale bar labeled '3,000 Feet'. The map scale is given as 1:16,000.

Area A

2020

Pre-Hurricane Ida



Area B

2021

Post-Hurricane Ida



MAP SCALE: 1:8,000
1,000
Feet

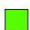


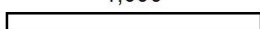
Area B

2021

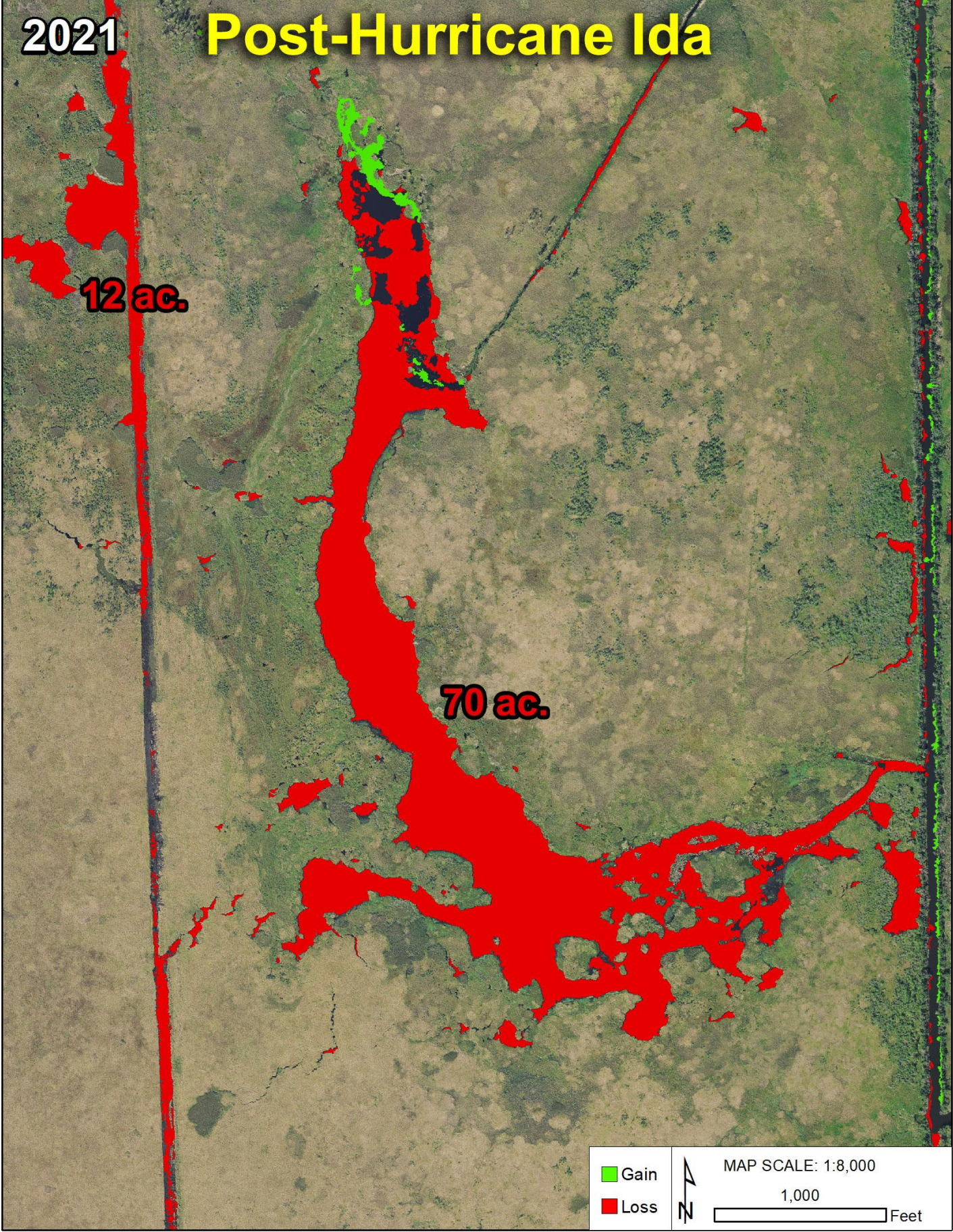
Post-Hurricane Ida

12 ac.

70 ac.

 Gain		MAP SCALE: 1:8,000
 Loss		1,000  Feet

Area B







2021

Post-Hurricane Ida

Wetland Loss

More than 82 acres
equivalent to

62 Football Fields

 Gain		MAP SCALE: 1:8,000
 Loss		1,000  Feet

Area B

2020

Pre-Hurricane Ida



Area C

2021

Post-Hurricane Ida



MAP SCALE: 1:16,000
3,000
Feet

Area C

2021

Post-Hurricane Ida

57 ac.

5 ac.

3 ac.

83 ac.

24 ac.

137 ac.

 Gain

 Loss



MAP SCALE: 1:16,000

3,000

Feet

Area C

2021

Post-Hurricane Ida

Wetland Loss
More than 310 acres
equivalent to
234 Football Fields

 Gain
 Loss



MAP SCALE: 1:16,000
3,000
Feet

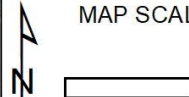
Area C

2020

Pre-Hurricane Ida



MAP SCALE: 1:16,000
3,000
Feet

A north arrow pointing upwards and a scale bar consisting of a horizontal line with a vertical tick mark at the right end.

Area D

2021

Post-Hurricane Ida



MAP SCALE: 1:16,000
3,000
Feet

Area D

2021

Post-Hurricane Ida

15 ac.

8 ac.

9 ac.

266 ac.

43 ac.

25 ac.

23 ac.

3 ac.

Gain
Loss

MAP SCALE: 1:16,000
3,000
Feet

Area D

2021

Post-Hurricane Ida

Wetland Loss
More than 366 acres
equivalent to
276 Football Fields

-  Gain
-  Loss



MAP SCALE: 1:16,000

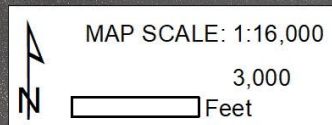
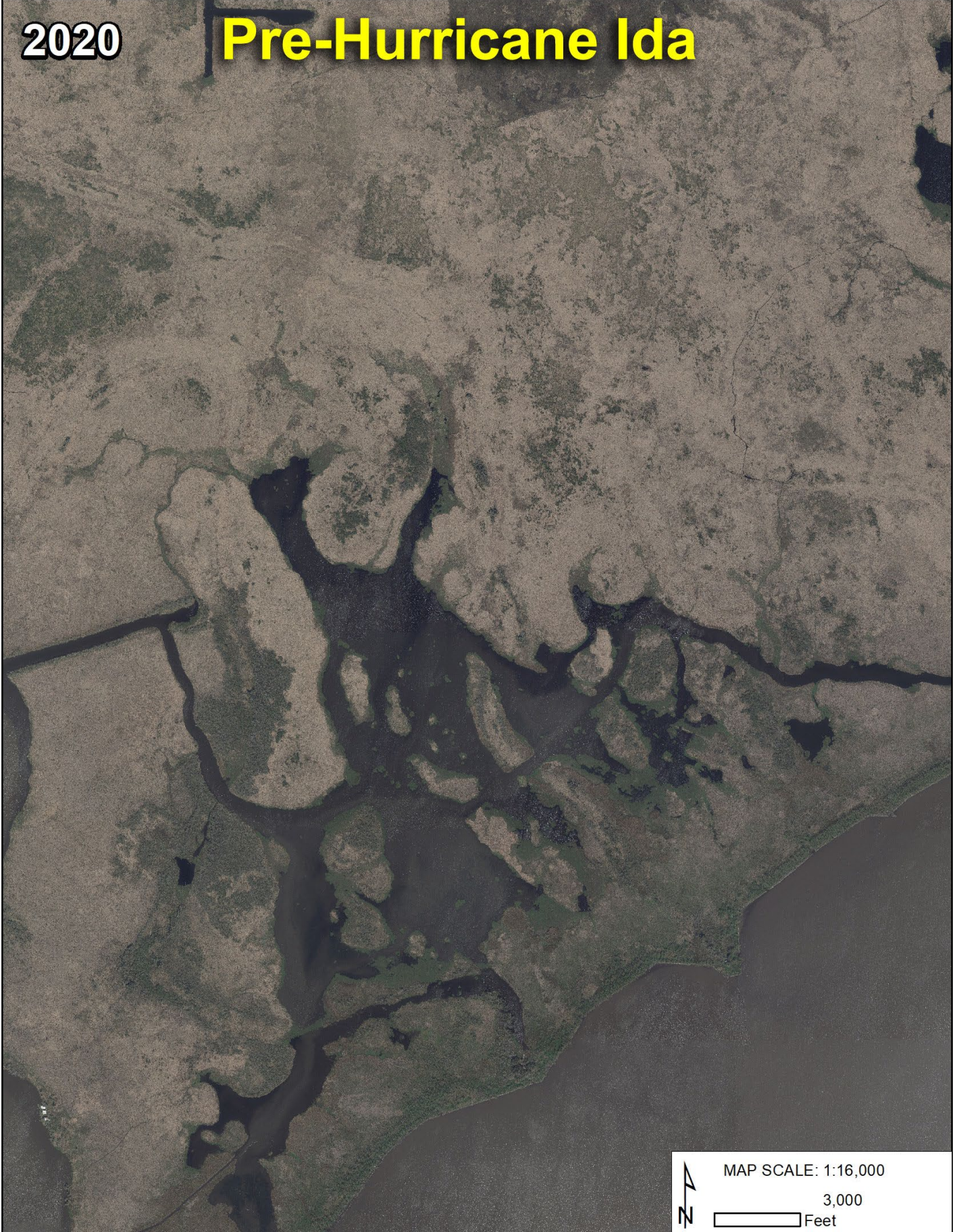
3,000

Feet

Area D

2020

Pre-Hurricane Ida



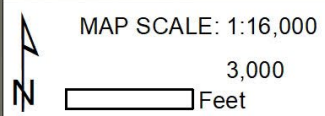
Area E

2021

Post-Hurricane Ida



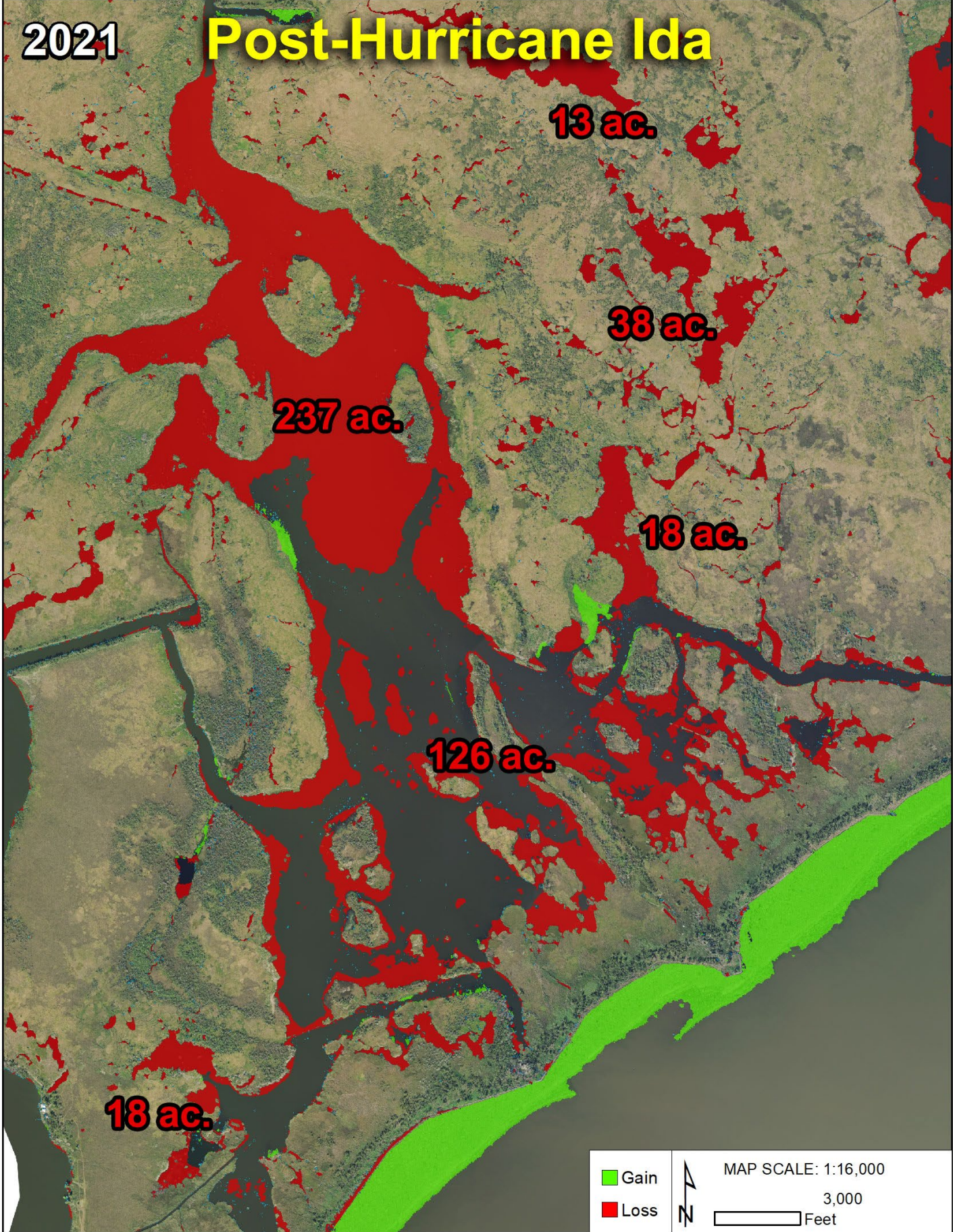
MAP SCALE: 1:16,000
3,000
Feet

A north arrow pointing upwards and a scale bar representing 3,000 feet.

Area E

2021

Post-Hurricane Ida



Area E

2021

Post-Hurricane Ida

Wetland Loss

More than 450 acres

equivalent to

340 Football Fields

Gain
Loss

MAP SCALE: 1:16,000
3,000
Feet

Area E

2020



MAP SCALE: 1:30,226
6,000
Feet

Area F

2021



MAP SCALE: 1:30,226




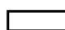
6,000

Feet

Area F

2021



 Gain		MAP SCALE: 1:30,226
 Loss		6,000
		 Feet

Area F

2021

Post-Hurricane Ida

Wetland Loss
More than 207 acres
equivalent to
156 Football Fields

Gain
Loss



MAP SCALE: 1:30,226

6,000

Feet

Area F

2020

Pre-Hurricane Ida

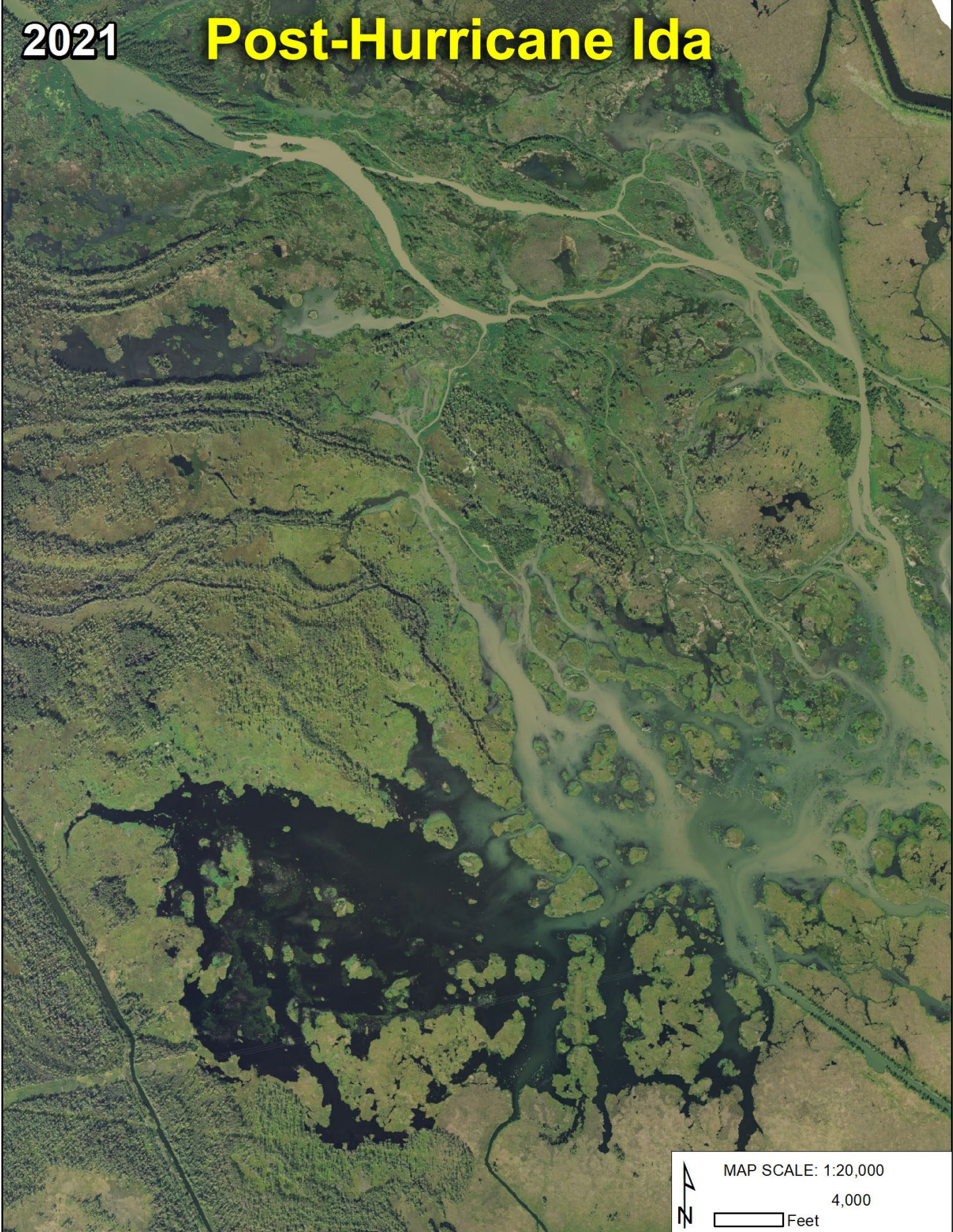


MAP SCALE: 1:20,000
4,000
Feet

Davis Pond Freshwater Diversion

2021

Post-Hurricane Ida

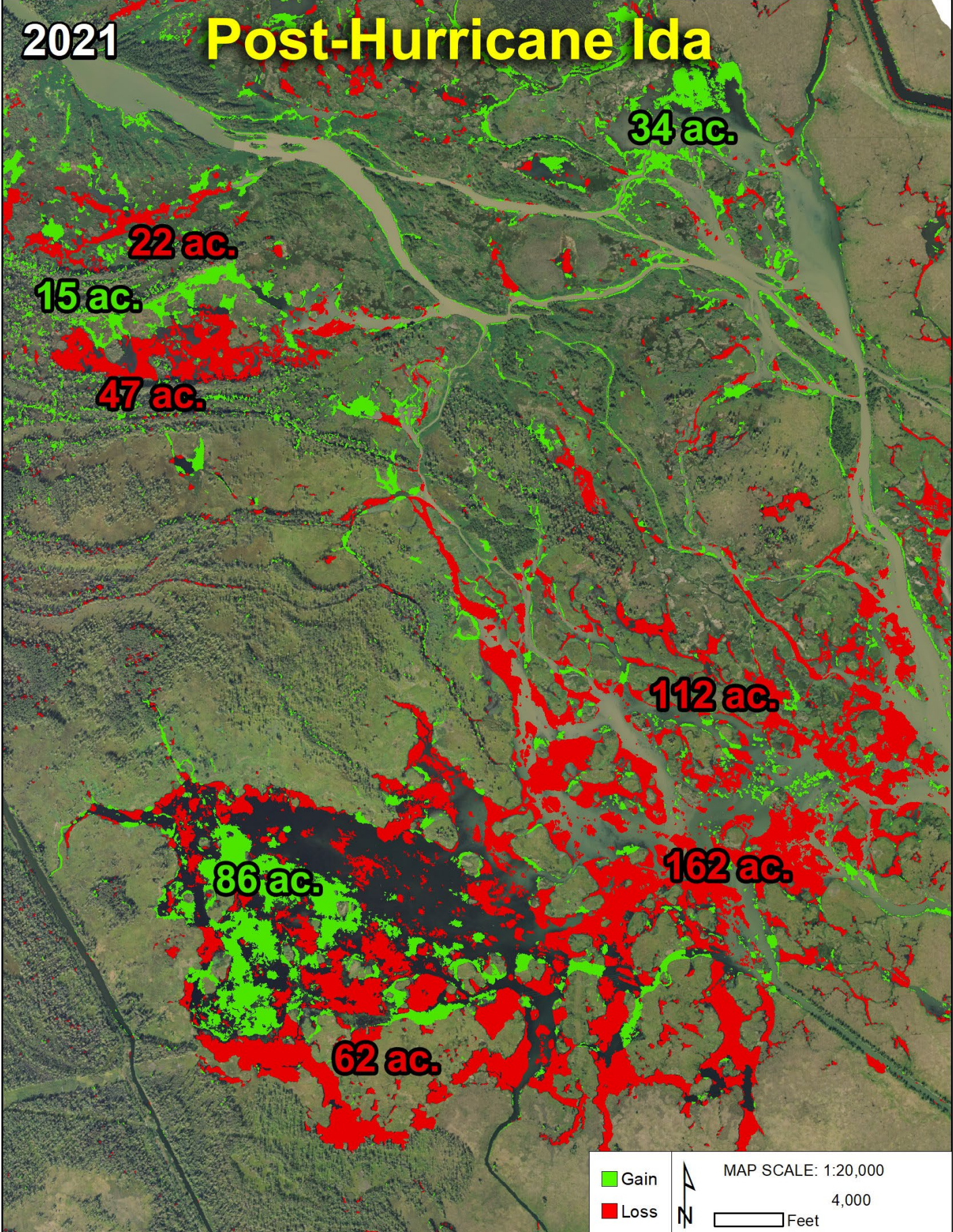


MAP SCALE: 1:20,000
4,000
Feet

Davis Pond Freshwater Diversion

2021

Post-Hurricane Ida



MAP SCALE: 1:20,000
4,000 Feet

Gain
Loss

Davis Pond Freshwater Diversion

Study Area Overview Map



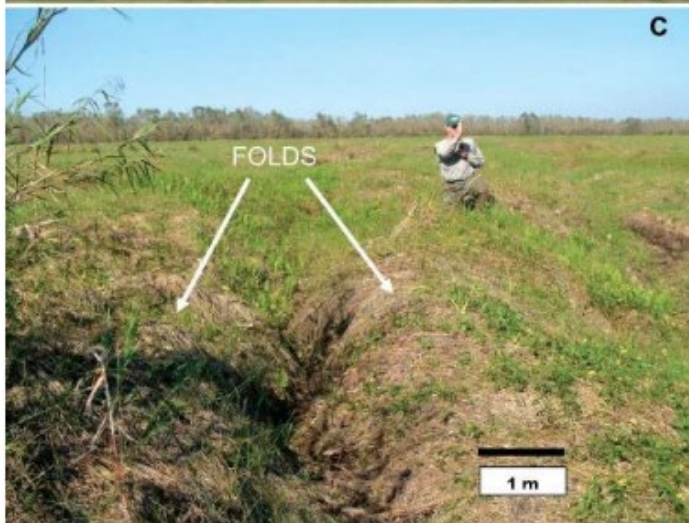
Pre-storm



Post storm

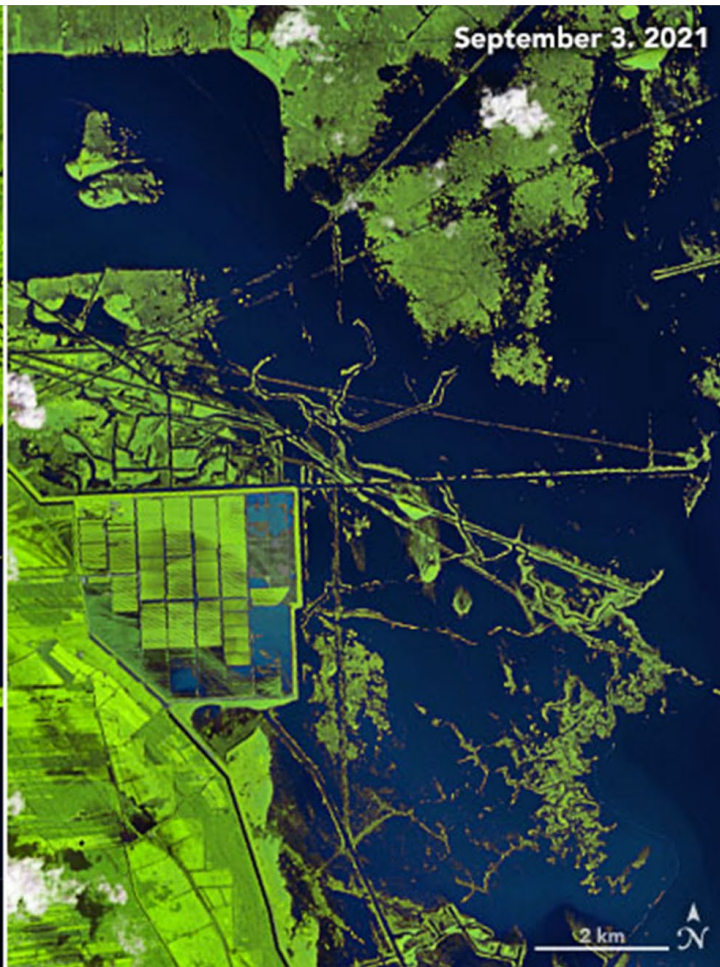
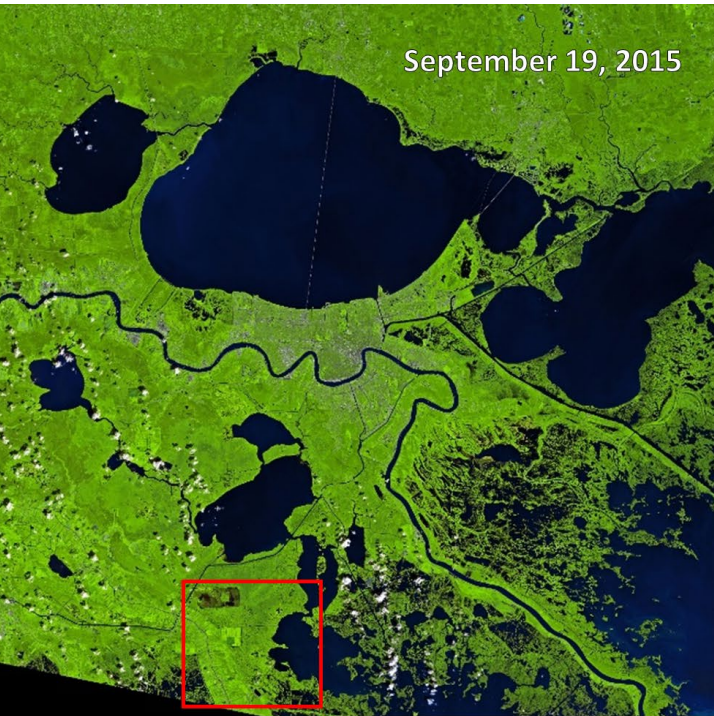


Post storm



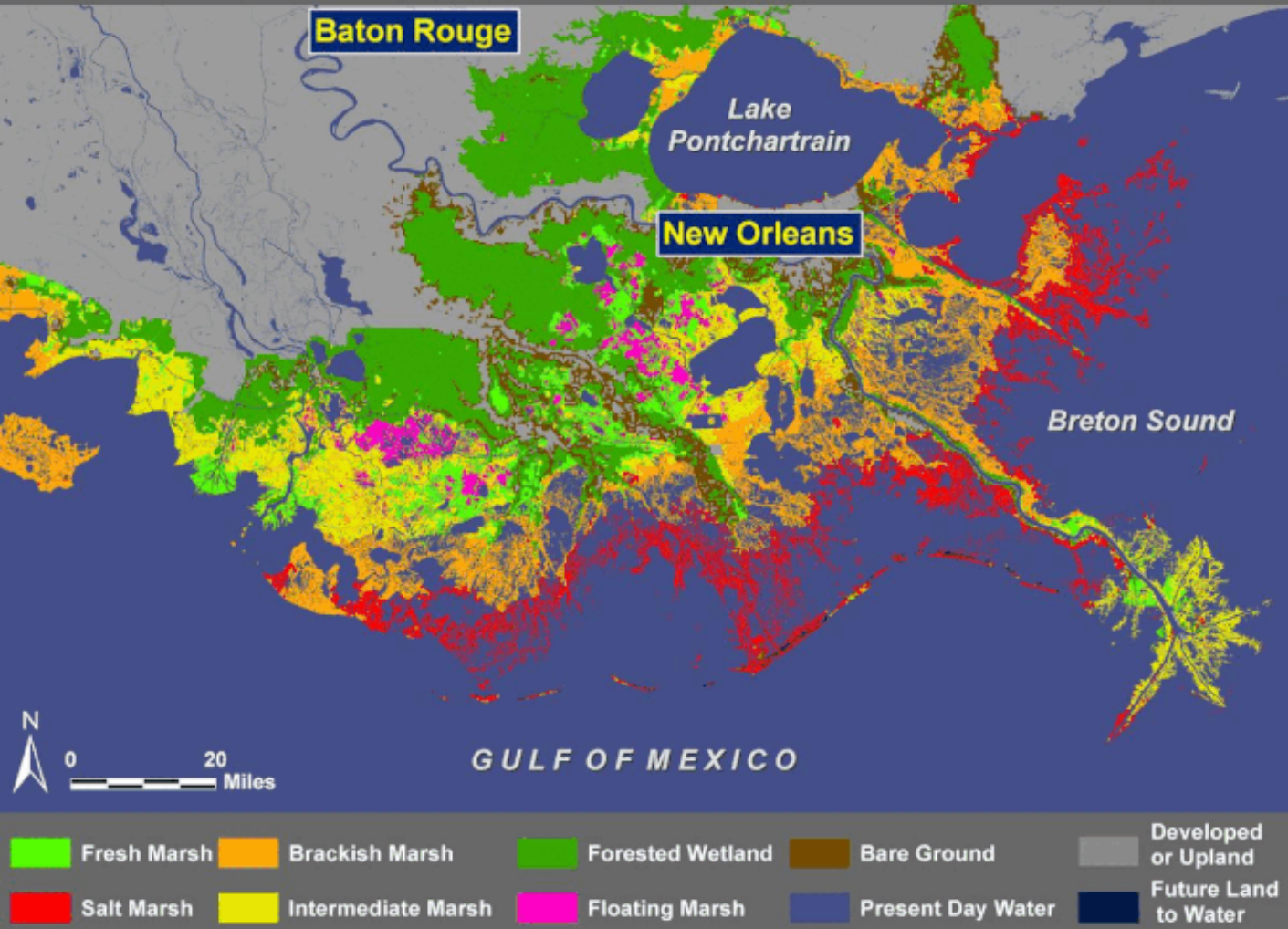
Source: Cahoon, 2006.

Pre vs Post storm



Why is this important?

Coastal Vegetation – Present Day



Source: Louisiana Coastal Master Plan

Structural Risk Reduction



An aerial photograph of a wetland area. In the upper portion, a long bridge spans across a body of water. Below the bridge, the landscape is a complex network of water channels and green, marshy islands. The overall scene is a mix of dark water and vibrant green vegetation.

Thank You!

Questions/Comments

Email: lmartinez@stcharlesgov.net

Phone: 504-235-1902