

ORD.

2005-0182

INTRODUCED BY: ALBERT D. LAQUE, PARISH PRESIDENT

ORDINANCE NO. 05-7-2

An ordinance to approve Amendment No. 1 to the Joint Use Agreement with the Department of Transportation and Development for the Animal Control Facility Expansion Project in Luling.

WHEREAS, the St. Charles Parish Council adopted Ordinance No. 82-6-15 on June 21, 1982 which approved a Joint Use Agreement with the Louisiana Department of Transportation and Development for an Animal Control Shelter at 13830 River Road in Luling; and,

WHEREAS, the St. Charles Humane Society has proposed to construct a new Animal Shelter on property adjacent to the western edge of the existing shelter site; and,

WHEREAS, the Louisiana Department of Transportation and Development has agreed to amend its Joint Use Agreement with the Parish, to allow the use of said property; and,

WHEREAS, it is the desire of the Parish Council to approve said amendment.

THE ST. CHARLES PARISH COUNCIL HEREBY ORDAINS:

SECTION I. That Amendment No. 1 to Joint Use Agreement No. 44 St. Charles Parish Animal Control Expansion in Luling is hereby approved.

SECTION II. That the Parish President is hereby authorized to execute said Amendment No. 1 on behalf of St. Charles Parish.

The foregoing ordinance having been submitted to a vote, the vote thereon was as follows:

YEAS: MARINO, FABRE, RAMCHANDRAN, WALLS, BLACK, DUHE, MINNICH
NAYS: NONE
ABSENT: FAUCHEUX, HILAIRE

And the ordinance was declared adopted this 11th day of July, 2005, to become effective five (5) days after publication in the Official Journal.

Animal Control Facility Expansion Project

VICE CHAIRMAN: *Brian C. Fal*
SECRETARY: *Barbara Jewel Tucker*
DLVD/PARISH PRESIDENT: *July 12, 2005*
APPROVED: _____ DISAPPROVED: _____
PARISH PRESIDENT: *Albert D. Laque*
RETD/SECRETARY: *July 12, 2005*
AT: *4:01 PM* RECD BY: *BJS*

STATE OF LOUISIANA
DEPARTMENT OF TRANSPORTATION AND DEVELOPMENT

Amendment NO. 1

to

Joint-Use Agreement No. 44 – ST. Charles Parish Animal Control Expansion in Luling

This Amendment to Joint Use Agreement 44 (the "Agreement") is made and entered into on the 12th day of July, 2005, by and between the Department of Transportation and Development ("DOTD") and St. Charles Parish ("the Parish") to authorize the removal of the present facility (to be replaced by a parking lot and a fenced-in dog run), and the construction of a new and larger facility on an adjacent piece of property.

The Parish represents that it is presently in compliance with all commitments, representations and warranties on its part under the Agreement and that during and after the construction and installation of the new facility, it will remain in compliance with all commitments, representations and warranties on its part hereunder.

Except as supplemented hereinabove, the Agreement is hereby ratified by the parties, and its terms and conditions shall remain in effect.

IN WITNESS WHEREOF, this Amendment has been executed in two (2) copies by the parties hereto as of the date herein first above written.

St. Charles Parish

ATTEST:

Richard Jacob Tucker

Valarie Berthelet

BY: Albert D. Lague

Albert D. Lague
Typed or Printed Name

ATTEST:

Dannysale Young

Betty Huff

DEPARTMENT OF TRANSPORTATION
AND DEVELOPMENT

BY: Scott A. Wimmer

Scott A. Wimmer, P.E.
Access Management Engineer

5/24/2005

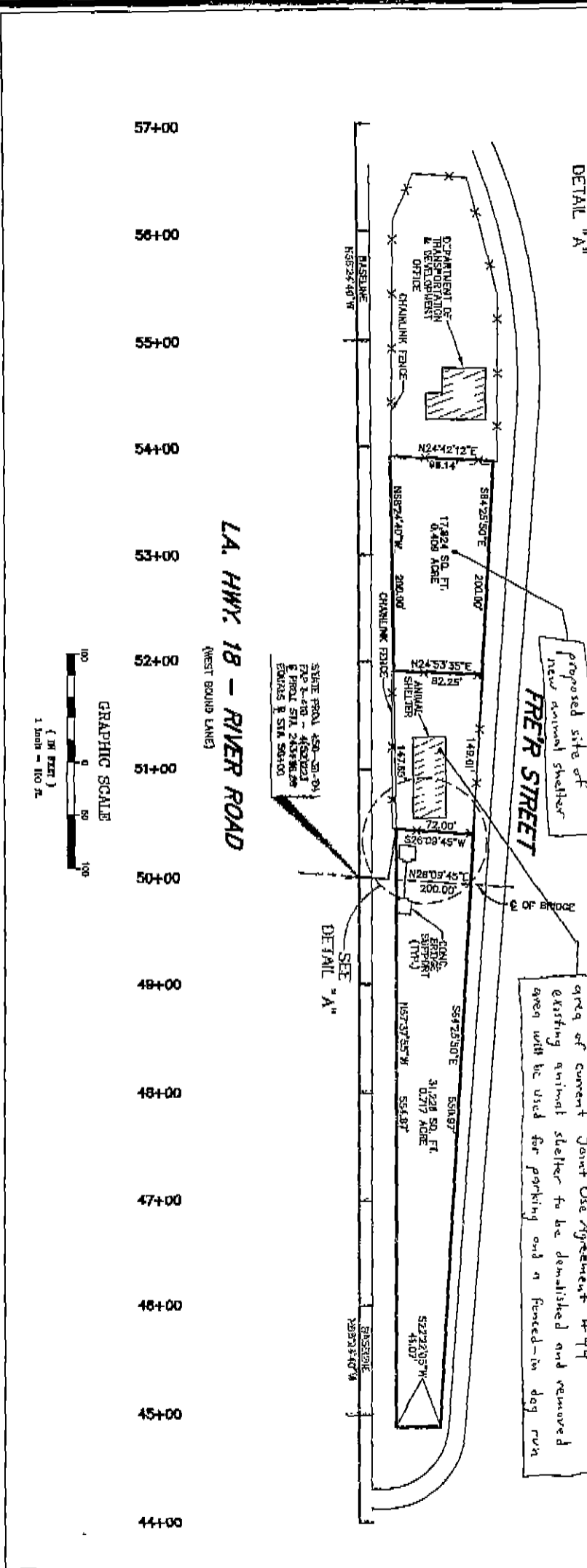
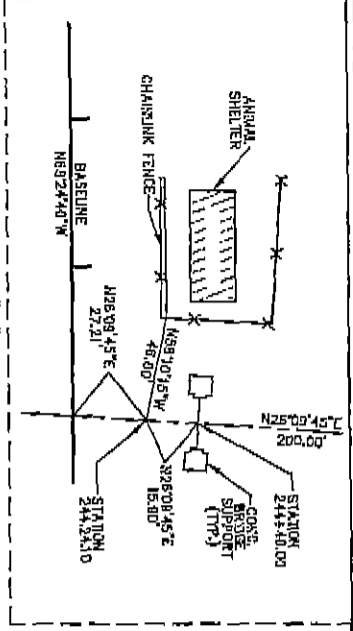
DATE

APPROVED BY: _____
FEDERAL HIGHWAY ADMINISTRATION

DATE

GENERAL NOTES

THE LOCATIONS OF UNDERGROUND AND OTHER NONVISIBLE UTILITIES SHOWN HEREON HAVE BEEN DETERMINED FROM DATA EITHER FURNISHED BY THE AGENCIES CONTROLLING SUCH DATA AND/OR EXTRACTED FROM RECORDS MADE AVAILABLE TO US BY THE AGENCIES CONTROLLING SUCH RECORDS. WHERE FOUND, THE SURFACE FEATURES OF LOCATIONS ARE SHOWN. THE ACTUAL NONVISIBLE LOCATIONS MAY VARY FROM THOSE SHOWN HEREON. EACH AGENCY SHOULD BE CONTACTED PRIOR TO ANY RELIANCE UPON THE ACCURACY OF SUCH LOCATIONS SHOWN HEREON, INCLUDING PRIOR TO EXCAVATION AND DIGGING.



SCALE: 1" = 100'

DATE: MARCH 7, 2005

DRAWN BY: S.P.H. CHECKED BY: K.J.E.

DRAWING NO: B-4021-2005 PROJ NO: 4561

SHEET 1 OF 1

MAP OF PROPOSED SITE OF ST. CHARLES PARISH ANIMAL CONTROL FACILITY IN SECTIONS 7 & 8, T13S-R21E LULUNG, ST. CHARLES PARISH, LOUISIANA

I have compiled the Federal Surveys and Sectioned Land from the original records and have found the property to be in a Special Flood Hazard Area. F. I. A. ZONE: X

NO BASE FLD. ELEV.

BGM CORPORATION, L.L.C.
Professional Land Surveyors

534 WILLIAMS BOULEVARD
E-mail: bmgcorp@bmgcorporation.com
(504) 488-0800
Fax No. (504) 487-0035
CITY OF MEHNER
EASTRICH PARISH, LOUISIANA, 70052

JOHN S. TEEGARDEN
REG. No. 4855
Professional Land Surveyor

STATE OF LOUISIANA
PROFESSIONAL LAND SURVEYOR