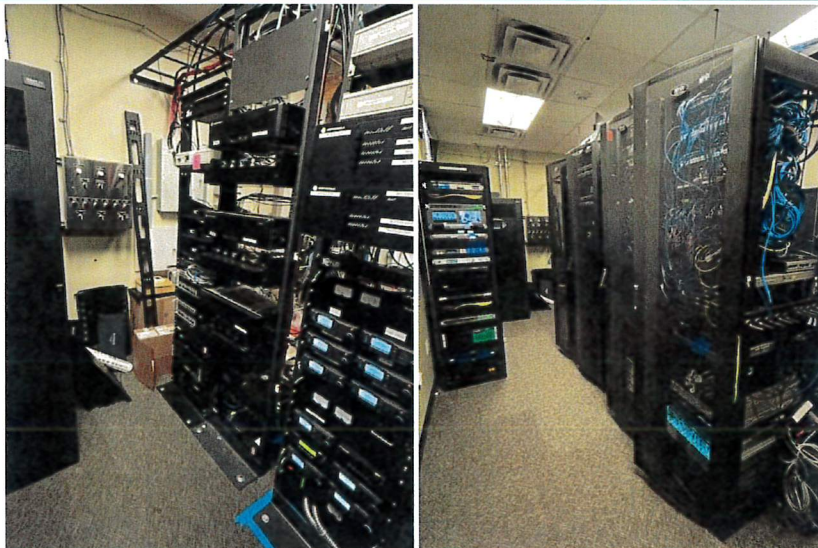


## Types of Data Centers

- **Enterprise Data Centers** - Owned and operated by companies for their own internal use, usually on-premise, offering high control.
- **Colocation Data Centers** - Companies rent space, power, and cooling from a third party to host their own servers.
- **Edge Data Centers** - Small, decentralized facilities located near end-users to reduce latency for applications like IoT and AI.
- **Managed Services Data Centers** - Third parties manage the IT infrastructure and administration on behalf of a client.
- **Cloud Data Centers** - Virtualized, off-premises services provided by companies like AWS, Microsoft Azure, and Google Cloud.
- **Hyperscale Data Centers** - Extremely large, high-capacity facilities designed for cloud computing and massive workloads
- **Modular Data Centers** - Prefabricated, portable units that can be deployed quickly and scaled easily.

1

## Enterprise Data Center



2

## Colocation, Edge and Managed Center



3

## Colocation, Edge and Managed Center



4

# Colocation, Edge and Managed Center



5

# Cloud Data Center



6

# Hyperscale Data Center



7

# Modular Data Center



8