

2002-0112

INTRODUCED BY: ALBERT D. LAQUE, PARISH PRESIDENT
(DEPARTMENT OF LEGAL SERVICES)

ORDINANCE NO. 02-3-14

An ordinance to authorize the Parish President to purchase and/or expropriate a servitude from Esperanza Land Company and Union Pacific Railroad Company.

- WHEREAS, The economic development of St. Charles Parish is paramount to the health, safety and welfare of its residents; and
- WHEREAS, The development of available real estate in St. Charles Parish is essential to the economic development of St. Charles Parish; and
- WHEREAS, Esperanza Land Company has donated a certain tract of land to St. Charles Parish, access to which land requires a grade crossing over the Union Pacific Railroad; and
- WHEREAS, It is necessary to purchase and/or expropriate from Esperanza Land Company and/or the Union Pacific Railroad Company, a servitude over certain property owned by Esperanza Land Company which is subject to a railroad servitude in favor of Union Pacific Railroad Company; and
- WHEREAS, The property over which the servitude is needed is located in Luling, Louisiana at the intersection of Sugarland Parkway (under construction) and the Union Pacific Railroad as shown on the attached drawing;
- WHEREAS, The expropriation of said servitude for a grade crossing is for a public purpose, namely economic development and for access to publicly owned property; and,
- WHEREAS, The Developer will reimburse the Parish for any and all expenses incurred in obtaining servitude.

THE ST. CHARLES PARISH COUNCIL HEREBY ORDAINS, that the Parish President through the Department of Legal Services, is hereby authorized to purchase and/or expropriate a servitude over certain land owned by Esperanza Land Company which is subject to a railroad servitude, for the purpose of construction of a grade crossing over the Union Pacific Railroad Company at Luling, Louisiana at the intersection of Sugarland Parkway (under construction) and the Union Pacific Railroad; further that the Parish President is hereby authorized to execute all documents necessary to complete said purchase and/or expropriation; and further, that should the expropriation process be necessary, said expropriation should be in accordance with state law.

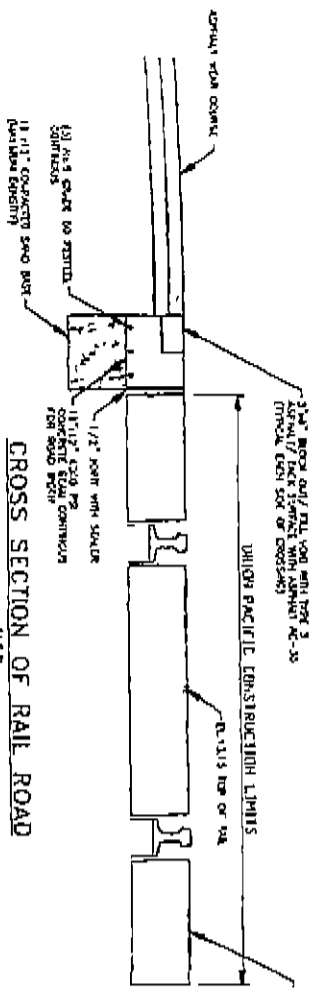
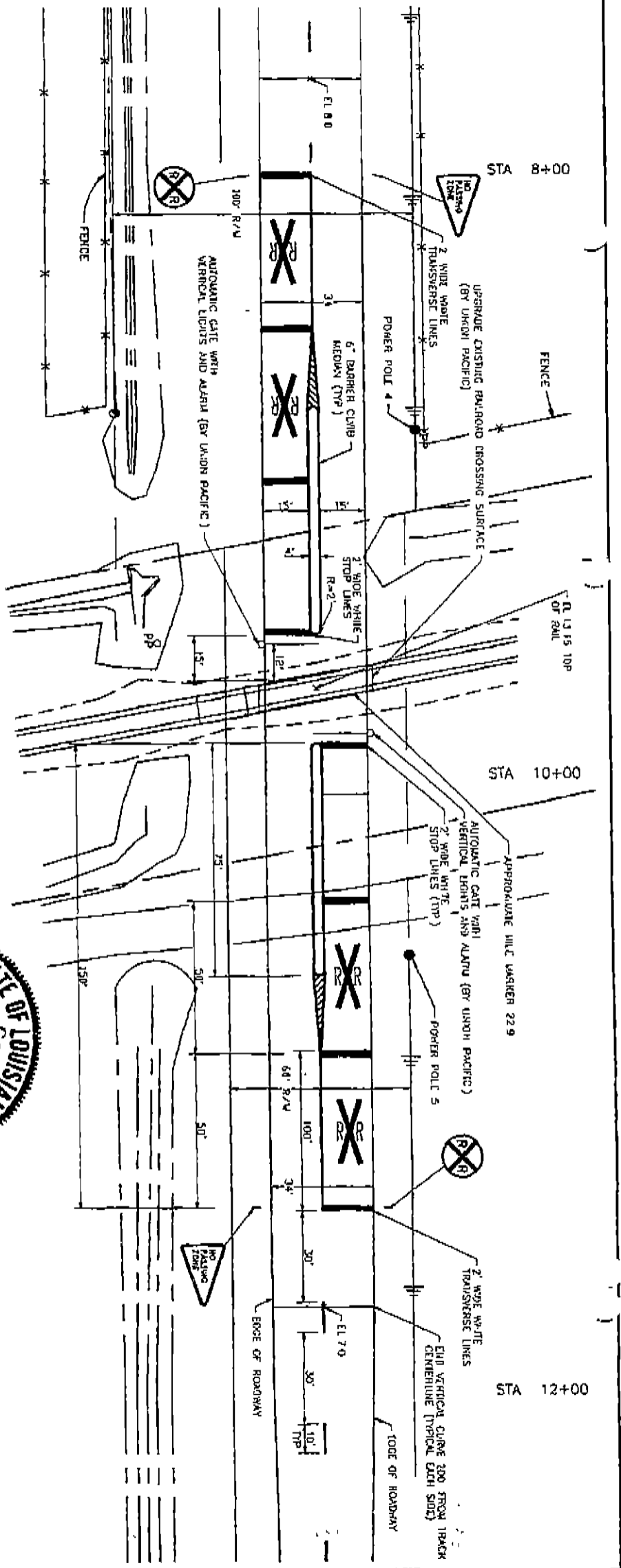
The foregoing ordinance having been submitted to a vote, the vote thereon was as follows:

YEAS: FAUCHEUX, HILAIRE, FABRE, MARINO, MINNICH
NAYS: RAMCHANDRAN, ABADIE
ABSENT: AUTHEMENT, BLACK

And the ordinance was declared adopted this 25th day of March, 2002, to become effective five (5) days after publication in the Official Journal.

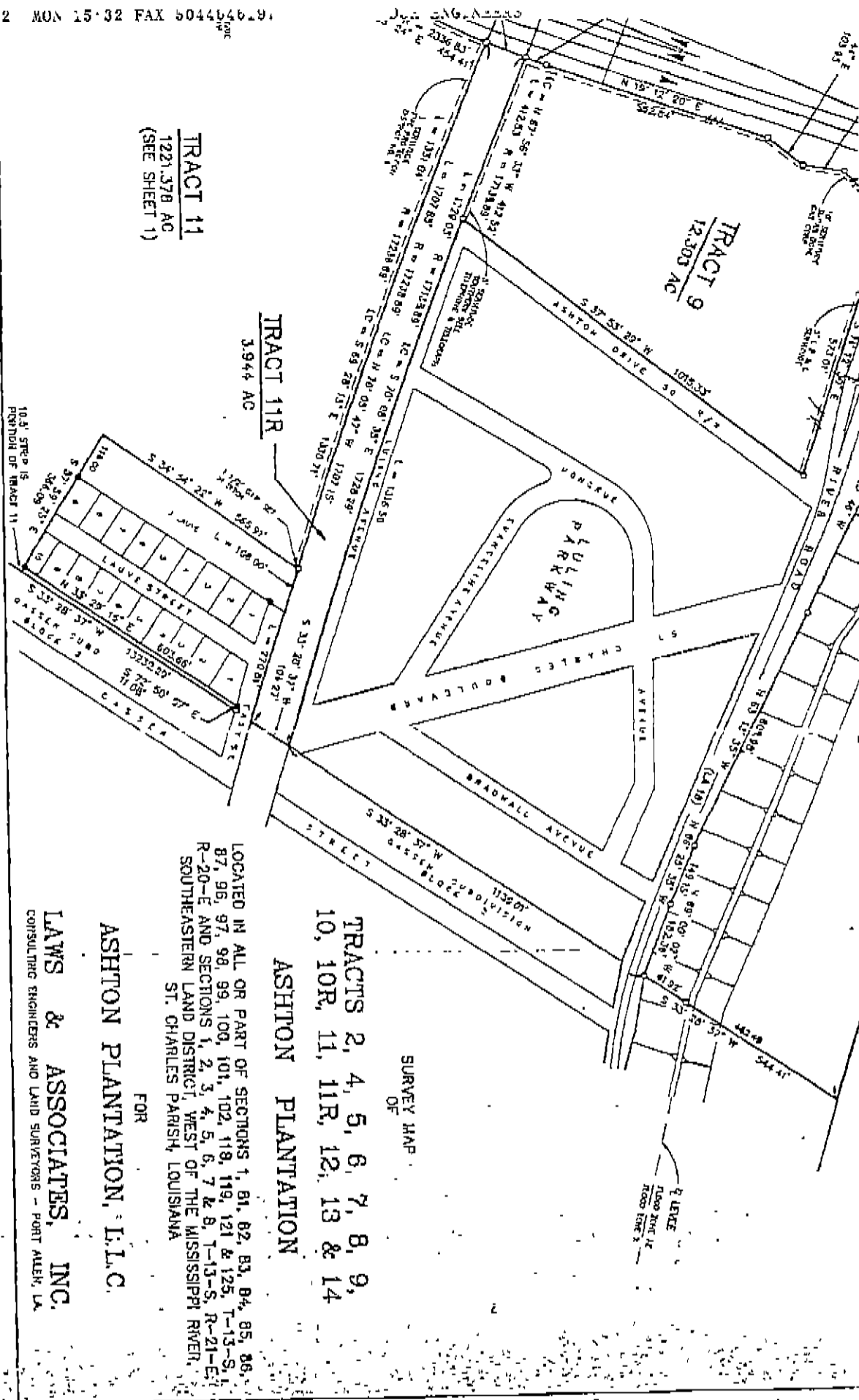
CHAIRMAN. *Albert D. Laque*
 SECRETARY. *Barbara G. Jacob* ^{vb}
 DLVD/PARISH PRESIDENT: *March 26, 2002*
 APPROVED _____ DISAPPROVED _____

PARISH PRESIDENT. *Albert D. Laque*
 RETD/SECRETARY: *March 27 2002*
 AT *9:30 am* RECD BY: *BJJ* ^{vb}



Shawny J. Hebert

SUGARLAND PARKWAY ST. CHARLES PARISH, LOUISIANA PROPOSED UNION PACIFIC RAIL CROSSING UPGRADE AT SUGARLAND PARKWAY (MILE MARKER 22.9)	
DANNY J. HEBERT, P.E. LICENSED CIVIL AND ENVIRONMENTAL ENGINEER P.O. BOX 6528 LUDLUM, LOUISIANA 70040 PHONE (504) 745-2190 FAX (504) 745-2383	
DATE	10/17/00
DRAWN BY	DAVID K. H. / 118
CHECKED BY	DAVID K. H.
DESIGNED BY	DAVID K. H.
APPROVED BY	DANNY J. HEBERT
REVISIONS	



TRACT 11
 1221,378 AC
 (SEE SHEET 1)

TRACT 11R
 3,944 AC

TRACT 9
 12,303 AC

TRACTS 2, 4, 5, 6, 7, 8, 9,
 10, 10R, 11, 11R, 12, 13 & 14

ASHTON PLANTATION

SURVEY MAP
 OF

FOR
 ASHTON PLANTATION, L.L.C.

LAW & ASSOCIATES, INC.
 CONSULTING ENGINEERS AND LAND SURVEYORS - PORT ALLEN, LA

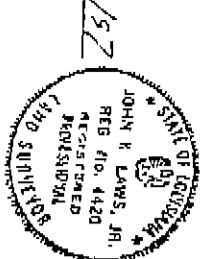
LOCATED IN ALL OR PART OF SECTIONS 1, 81, 82, 83, 84, 85, 86, 87, 88, 89, 90, 91, 92, 93, 94, 95, 96, 97, 98, 99, 100, 101, 102, 103, 104, 105, 106, 107, 108, 109, 110, 111, 112, 113, 114, 115, 116, 117, 118, 119, 120, 121, 122, 123, 124, 125, 126, 127, 128, 129, 130, 131, 132, 133, 134, 135, 136, 137, 138, 139, 140, 141, 142, 143, 144, 145, 146, 147, 148, 149, 150, 151, 152, 153, 154, 155, 156, 157, 158, 159, 160, 161, 162, 163, 164, 165, 166, 167, 168, 169, 170, 171, 172, 173, 174, 175, 176, 177, 178, 179, 180, 181, 182, 183, 184, 185, 186, 187, 188, 189, 190, 191, 192, 193, 194, 195, 196, 197, 198, 199, 200, 201, 202, 203, 204, 205, 206, 207, 208, 209, 210, 211, 212, 213, 214, 215, 216, 217, 218, 219, 220, 221, 222, 223, 224, 225, 226, 227, 228, 229, 230, 231, 232, 233, 234, 235, 236, 237, 238, 239, 240, 241, 242, 243, 244, 245, 246, 247, 248, 249, 250, 251, 252, 253, 254, 255, 256, 257, 258, 259, 260, 261, 262, 263, 264, 265, 266, 267, 268, 269, 270, 271, 272, 273, 274, 275, 276, 277, 278, 279, 280, 281, 282, 283, 284, 285, 286, 287, 288, 289, 290, 291, 292, 293, 294, 295, 296, 297, 298, 299, 300, 301, 302, 303, 304, 305, 306, 307, 308, 309, 310, 311, 312, 313, 314, 315, 316, 317, 318, 319, 320, 321, 322, 323, 324, 325, 326, 327, 328, 329, 330, 331, 332, 333, 334, 335, 336, 337, 338, 339, 340, 341, 342, 343, 344, 345, 346, 347, 348, 349, 350, 351, 352, 353, 354, 355, 356, 357, 358, 359, 360, 361, 362, 363, 364, 365, 366, 367, 368, 369, 370, 371, 372, 373, 374, 375, 376, 377, 378, 379, 380, 381, 382, 383, 384, 385, 386, 387, 388, 389, 390, 391, 392, 393, 394, 395, 396, 397, 398, 399, 400, 401, 402, 403, 404, 405, 406, 407, 408, 409, 410, 411, 412, 413, 414, 415, 416, 417, 418, 419, 420, 421, 422, 423, 424, 425, 426, 427, 428, 429, 430, 431, 432, 433, 434, 435, 436, 437, 438, 439, 440, 441, 442, 443, 444, 445, 446, 447, 448, 449, 450, 451, 452, 453, 454, 455, 456, 457, 458, 459, 460, 461, 462, 463, 464, 465, 466, 467, 468, 469, 470, 471, 472, 473, 474, 475, 476, 477, 478, 479, 480, 481, 482, 483, 484, 485, 486, 487, 488, 489, 490, 491, 492, 493, 494, 495, 496, 497, 498, 499, 500, 501, 502, 503, 504, 505, 506, 507, 508, 509, 510, 511, 512, 513, 514, 515, 516, 517, 518, 519, 520, 521, 522, 523, 524, 525, 526, 527, 528, 529, 530, 531, 532, 533, 534, 535, 536, 537, 538, 539, 540, 541, 542, 543, 544, 545, 546, 547, 548, 549, 550, 551, 552, 553, 554, 555, 556, 557, 558, 559, 560, 561, 562, 563, 564, 565, 566, 567, 568, 569, 570, 571, 572, 573, 574, 575, 576, 577, 578, 579, 580, 581, 582, 583, 584, 585, 586, 587, 588, 589, 590, 591, 592, 593, 594, 595, 596, 597, 598, 599, 600, 601, 602, 603, 604, 605, 606, 607, 608, 609, 610, 611, 612, 613, 614, 615, 616, 617, 618, 619, 620, 621, 622, 623, 624, 625, 626, 627, 628, 629, 630, 631, 632, 633, 634, 635, 636, 637, 638, 639, 640, 641, 642, 643, 644, 645, 646, 647, 648, 649, 650, 651, 652, 653, 654, 655, 656, 657, 658, 659, 660, 661, 662, 663, 664, 665, 666, 667, 668, 669, 670, 671, 672, 673, 674, 675, 676, 677, 678, 679, 680, 681, 682, 683, 684, 685, 686, 687, 688, 689, 690, 691, 692, 693, 694, 695, 696, 697, 698, 699, 700, 701, 702, 703, 704, 705, 706, 707, 708, 709, 710, 711, 712, 713, 714, 715, 716, 717, 718, 719, 720, 721, 722, 723, 724, 725, 726, 727, 728, 729, 730, 731, 732, 733, 734, 735, 736, 737, 738, 739, 740, 741, 742, 743, 744, 745, 746, 747, 748, 749, 750, 751, 752, 753, 754, 755, 756, 757, 758, 759, 760, 761, 762, 763, 764, 765, 766, 767, 768, 769, 770, 771, 772, 773, 774, 775, 776, 777, 778, 779, 780, 781, 782, 783, 784, 785, 786, 787, 788, 789, 790, 791, 792, 793, 794, 795, 796, 797, 798, 799, 800, 801, 802, 803, 804, 805, 806, 807, 808, 809, 810, 811, 812, 813, 814, 815, 816, 817, 818, 819, 820, 821, 822, 823, 824, 825, 826, 827, 828, 829, 830, 831, 832, 833, 834, 835, 836, 837, 838, 839, 840, 841, 842, 843, 844, 845, 846, 847, 848, 849, 850, 851, 852, 853, 854, 855, 856, 857, 858, 859, 860, 861, 862, 863, 864, 865, 866, 867, 868, 869, 870, 871, 872, 873, 874, 875, 876, 877, 878, 879, 880, 881, 882, 883, 884, 885, 886, 887, 888, 889, 890, 891, 892, 893, 894, 895, 896, 897, 898, 899, 900, 901, 902, 903, 904, 905, 906, 907, 908, 909, 910, 911, 912, 913, 914, 915, 916, 917, 918, 919, 920, 921, 922, 923, 924, 925, 926, 927, 928, 929, 930, 931, 932, 933, 934, 935, 936, 937, 938, 939, 940, 941, 942, 943, 944, 945, 946, 947, 948, 949, 950, 951, 952, 953, 954, 955, 956, 957, 958, 959, 960, 961, 962, 963, 964, 965, 966, 967, 968, 969, 970, 971, 972, 973, 974, 975, 976, 977, 978, 979, 980, 981, 982, 983, 984, 985, 986, 987, 988, 989, 990, 991, 992, 993, 994, 995, 996, 997, 998, 999, 1000.

12000

TRACT 4
233.847 AC
(SEE SHEET 1)

AMA
DYERY
DIRECT

ST BANK
ACTUAL
DETERMINED



TRACT 10
75.994 AC
(SEE SHEET 1)

TRACT 10R
1.794 AC

TRACT 1
12303 AC

TRACT 11
1221.378 AC
(SEE SHEET 1)

SHEET 2 OF 2

