

LEGEND

[Symbol]	BUILDING
[Symbol]	EXISTING RIGHT OF WAY
[Symbol]	SERVITUDE
[Symbol]	CATCH BASIN
[Symbol]	CULVERT
[Symbol]	DROP INLET, DRAIN LINE
[Symbol]	DRAIN MANHOLE, DRAIN LINE
[Symbol]	COMMUNICATIONS MANHOLE, LINE
[Symbol]	ELECTRICAL MANHOLE, ELEC. LINE
[Symbol]	GAS MANHOLE, GAS LINE
[Symbol]	SEWER MANHOLE, SEWER LINE
[Symbol]	TELEPHONE MANHOLE, TELE LINE
[Symbol]	TRAFFIC MANHOLE, TRAFFIC LINE
[Symbol]	WATER MANHOLE, WATER LINE
[Symbol]	UTILITY POLE / OVERHEAD LINES ELECTRIC, TELEPHONE, CABLE TV
[Symbol]	FIBER OPTIC RISER / LINE
[Symbol]	FENCE
[Symbol]	TELCO RISER / PEDISTAL
[Symbol]	UTILITY CLEANOUT
[Symbol]	UTILITY METER
[Symbol]	UTILITY PEDESTAL
[Symbol]	UTILITY VALVE
[Symbol]	UTILITY VALVE VAULT
[Symbol]	FIRE HYDRANT
[Symbol]	LIGHT STANDARD
[Symbol]	TRAFFIC SIGNAL POLE
[Symbol]	TRAFFIC LIGHT POWER VAULT
[Symbol]	CANOPY SUPPORT
[Symbol]	BOLLARD
[Symbol]	SIGN
[Symbol]	TREE
[Symbol]	RESIDENTIAL MAILBOX
[Symbol]	PP DEADMAN
[Symbol]	IRON ROD FOUND
[Symbol]	IRON PIPE FOUND

GENERAL NOTES
 THE LOCATIONS OF UNDERGROUND AND OTHER NONVISIBLE UTILITIES SHOWN HEREON HAVE BEEN DETERMINED FROM DATA EITHER FURNISHED BY THE AGENCIES CONTROLLING SUCH DATA AND/OR EXTRACTED FROM RECORDS MADE AVAILABLE TO US BY THE AGENCIES CONTROLLING SUCH RECORDS. WHERE FOUND, THE SURFACE FEATURES OF LOCATIONS ARE SHOWN. THE ACTUAL NONVISIBLE LOCATIONS MAY VARY FROM THOSE SHOWN HEREON. EACH AGENCY SHOULD BE CONTACTED RELATIVE TO THE PRECISE LOCATION OF ITS UNDERGROUND INSTALLATION PRIOR TO ANY RELIANCE UPON THE ACCURACY OF SUCH LOCATIONS SHOWN HEREON, INCLUDING PRIOR TO EXCAVATION AND DIGGING.

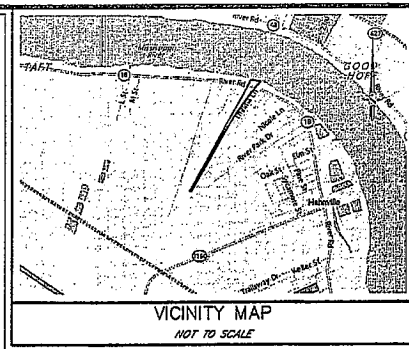
SERVITUDES
 THE SERVITUDES AND RESTRICTIONS SHOWN ON THIS SURVEY ARE LIMITED TO THOSE SET FORTH IN THE DESCRIPTION FURNISHED US AND THERE IS NO REPRESENTATION THAT ALL APPLICABLE SERVITUDES AND RESTRICTIONS ARE SHOWN HEREON. THE SURVEYOR HAS MADE NO TITLE SEARCH OR PUBLIC RECORD SEARCH IN COMPILING THE DATA FOR THIS SURVEY.

ZONING DESIGNATIONS
 THE ZONING INFORMATION SHOWN HEREON WAS SCALED FROM PARISH ZONING MAPS, AND MAY NOT ACCURATELY DEPICT TRUE ZONING.

SPECIAL FLOOD HAZARD AREA
 I HAVE CONSULTED THE FEDERAL INSURANCE ADMINISTRATION FLOOD HAZARD BOUNDARY MAPS AND FOUND THIS PROPERTY IS NOT IN A SPECIAL FLOOD HAZARD AREA.

FIRM ZONE: X
 BASE FLOOD ELEVATION: N/A
 COMMUNITY PANEL NO. 2201600125C
 MAP DATED/REVISED: JUNE 16, 1992

- REFERENCE MAPS**
- GLO TOWNSHIP MAP DATED OCTOBER 28, 1856.
 - SURVEY PLAT BY LUCIEN C. GASSEN PLS #353, DATE MAY 23, 1974.
 - SURVEY PLAT BY MORRIS P. HEBERT, INC., DAVID E. CLOUD, SR. PLS 4561, DATED 09-24-03.
 - SURVEY PLAT BY THIS FIRM DATED 04-01-13 WITH JOB #8215.

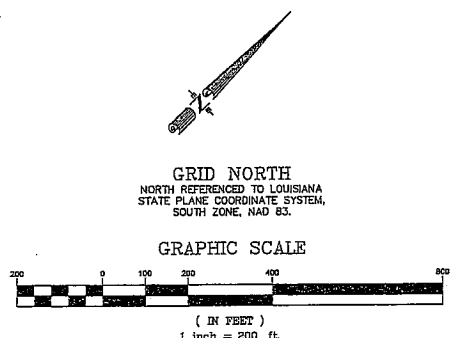
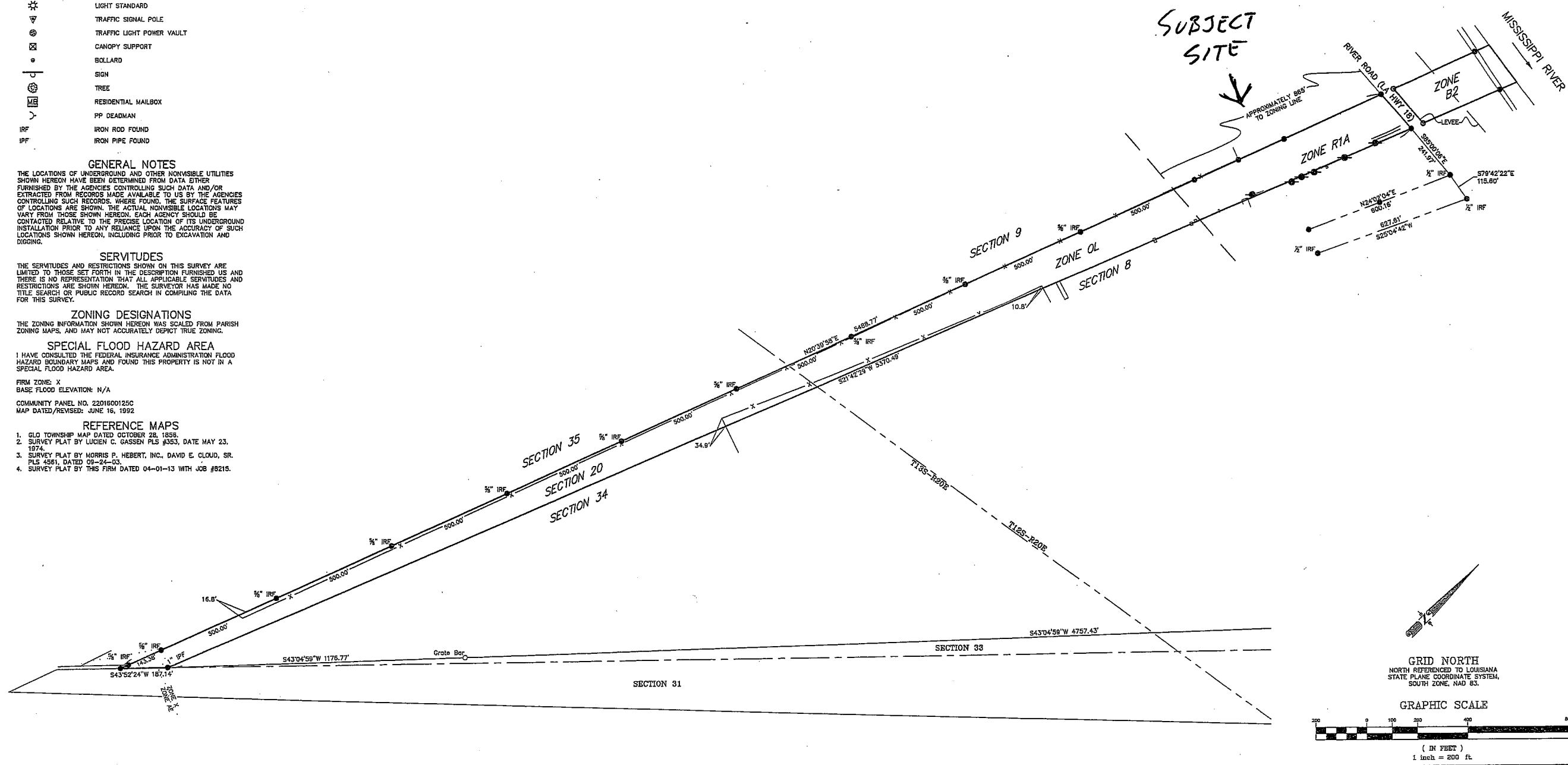


BAYOU FLEET PARTNERSHIP
 REGISTERED PROFESSIONAL LAND SURVEYOR
 REGISTRATION NO. 4203



A PROPOSED RV PARK LAYOUT
SECTION 3, TOWNSHIP 13 SOUTH, RANGE 20 EAST
& SECTION 20, TOWNSHIP 13 SOUTH, RANGE 20 EAST
PARISH OF SAINT CHARLES, LOUISIANA

I certify that this plan represents an actual ground survey made by me or under my direction, and it does not conform to the requirements for the Minimum Standard for Property Boundary Surveys as found in Louisiana Administrative Code Title 48: Chapter 29 for a Class B survey.

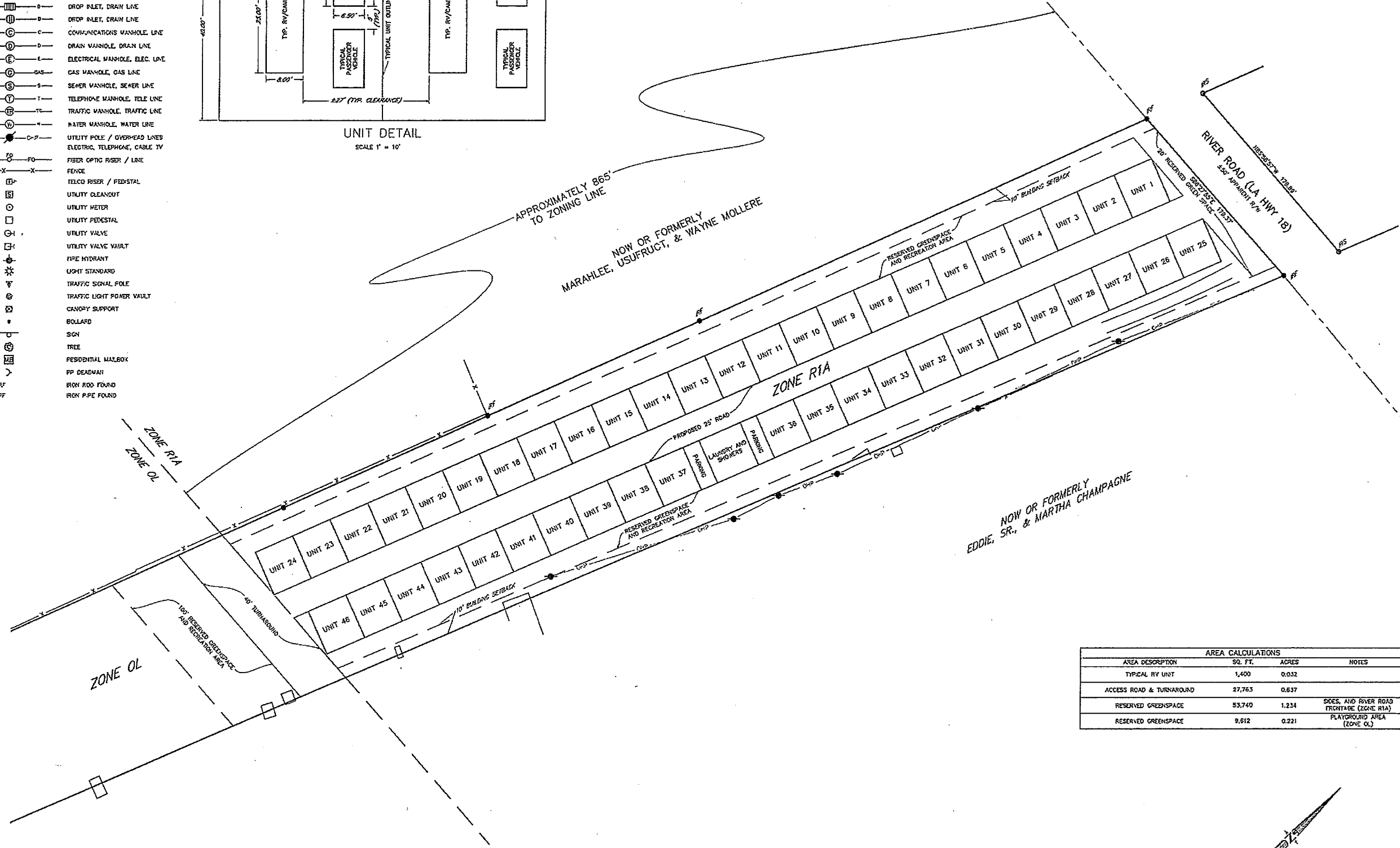
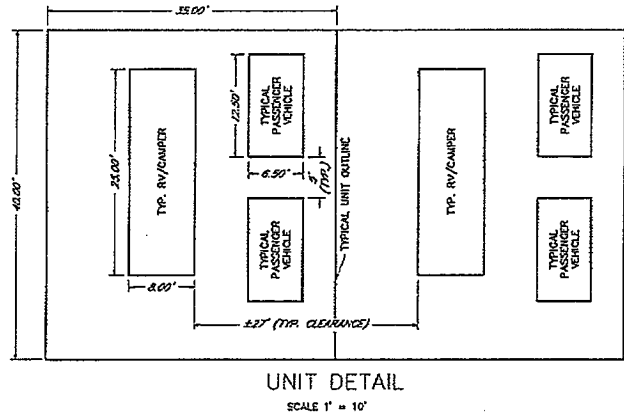


MARK	DESCRIPTION	REVISION RECORD

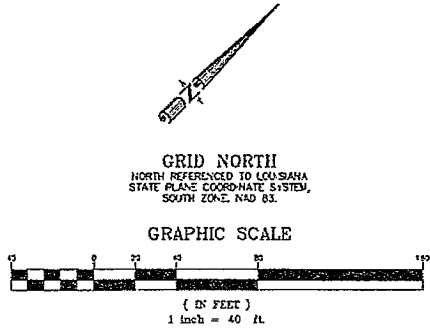
SCALE:	1" = 200'
DATE:	JUNE 8, 2015
DRAWN BY:	SLB
CHECKED BY:	SLB
FILE NO. 8215	PROJECT NO. 8998-B
SHEET 1	OF 2

LEGEND

- BUILDING
- EXISTING RIGHT OF WAY
- SERVICE LINE
- CATCH BASIN
- CULVERT
- DROP INLET, DRAIN LINE
- DROP INLET, DRAIN LINE
- COMMUNICATIONS MANHOLE, LINE
- DRAIN MANHOLE, DRAIN LINE
- ELECTRICAL MANHOLE, ELEC. LINE
- GAS MANHOLE, GAS LINE
- SEWER MANHOLE, SEWER LINE
- TELEPHONE MANHOLE, TELE. LINE
- TRAFFIC MANHOLE, TRAFFIC LINE
- WATER MANHOLE, WATER LINE
- UTILITY POLE / OVERHEAD LINES
- ELECTRIC, TELEPHONE, CABLE TV
- FIBER OPTIC RISER / LINE
- FENCE
- TELCO RISER / PEDestal
- UTILITY CLEANOUT
- UTILITY METER
- UTILITY PEDESTAL
- UTILITY VALVE
- UTILITY VALVE VAULT
- FIRE HYDRANT
- LIGHT STANDARD
- TRAFFIC SIGNAL POLE
- TRAFFIC LIGHT POWER VAULT
- CANDY SUPPORT
- BOLLARD
- SIGN
- TREE
- RESIDENTIAL MAILBOX
- PP DEADMAN
- IRON ROD FOUND
- IRON PIPE FOUND



AREA CALCULATIONS			
AREA DESCRIPTION	SQ. FT.	ACRES	NOTES
TYPICAL RV UNIT	1,400	0.032	
ACCESS ROAD & TURNAROUND	27,763	0.637	
RESERVED GREENSPACE	53,740	1.234	DOES, AND RIVER ROAD FRONTAGE (ZONE R1A)
RESERVED GREENSPACE	9,612	0.221	PLAYGROUND AREA (ZONE O1)



REGISTERED PROFESSIONAL LAND SURVEYOR
 RALPH P. FONTAUBERTA, JR.
 REGISTRATION NO. 4329



A PROPOSED RV PARK LAYOUT
 SECTION 3, TOWNSHIP 12 SOUTH, RANGE 20 EAST
 & SECTION 20, TOWNSHIP 13 SOUTH, RANGE 20 EAST
 PARISH OF SAINT CHARLES, LOUISIANA

I HEREBY CERTIFY THAT THE INFORMATION CONTAINED HEREIN WAS PREPARED BY ME OR UNDER MY CLOSE PERSONAL SUPERVISION AND THAT I AM A LICENSED PROFESSIONAL LAND SURVEYOR IN THE STATE OF LOUISIANA. I AM NOT PROVIDING THIS INFORMATION FOR ANY OTHER PURPOSES AND I AM NOT PROVIDING THIS INFORMATION FOR ANY OTHER PURPOSES AND I AM NOT PROVIDING THIS INFORMATION FOR ANY OTHER PURPOSES.

BAYOU FLEET PARTNERSHIP

NO.	DATE	BY	DESCRIPTION

SCALE: 1" = 40'
 DATE: JUNE 8, 2015
 DRAWN BY: MCM
 CHECKED BY: SLB
 FILE NO.: 8215 PROJECT NO.: 8998-B
 SHEET OF: 2 2