

*Reso.*

**2009-0313**

**INTRODUCED BY: V.J. ST. PIERRE, JR., PARISH PRESIDENT  
(DEPARTMENT OF PLANNING & ZONING)**

**RESOLUTION NO. 5672**

A resolution providing mandatory supporting authorization to Robert S. Chong to endorse the positive Planning & Zoning Commission decision regarding PZS-2009-28 for resubdivision of Lots 10—13 of East Half of Lot B, Good Hope Subdivision into Lots 10A & 13A in Section 6, T12S R8E, Norco, St. Charles Parish, La. by approving a waiver to the minimum frontage and square footage requirements.

**WHEREAS,** the St. Charles Parish Zoning Ordinance of 1981 (as amended) requires both Planning & Zoning Commission approval and a supporting resolution of the Parish Council for waives to the major subdivision approval requirements; and,

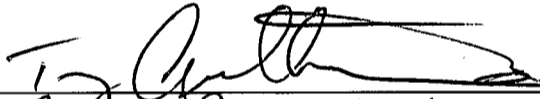
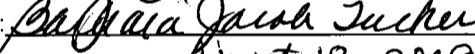

**WHEREAS,** the property owner, Robert S. Chong wishes approval of resubdivision of Lots 10—13 of East Half of Lot B, Good Hope Subdivision into Lots 10A & 13A in Section 6, T12S R8E, Norco, St. Charles Parish, La. by approving a waiver to the minimum frontage and square footage requirements.


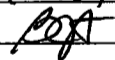
**NOW, THEREFORE, BE IT RESOLVED THAT THE ST. CHARLES PARISH COUNCIL,** does hereby provide this supporting resolution to Robert S. Chong to endorse the positive Planning & Zoning Commission decision regarding PZS-2009-28 for resubdivision of Lots 10—13 of East Half of Lot B, Good Hope Subdivision into Lots 10A & 13A in Section 6, T12S R8E, Norco, St. Charles Parish, La. by approving a waiver to the minimum frontage and square footage requirements.

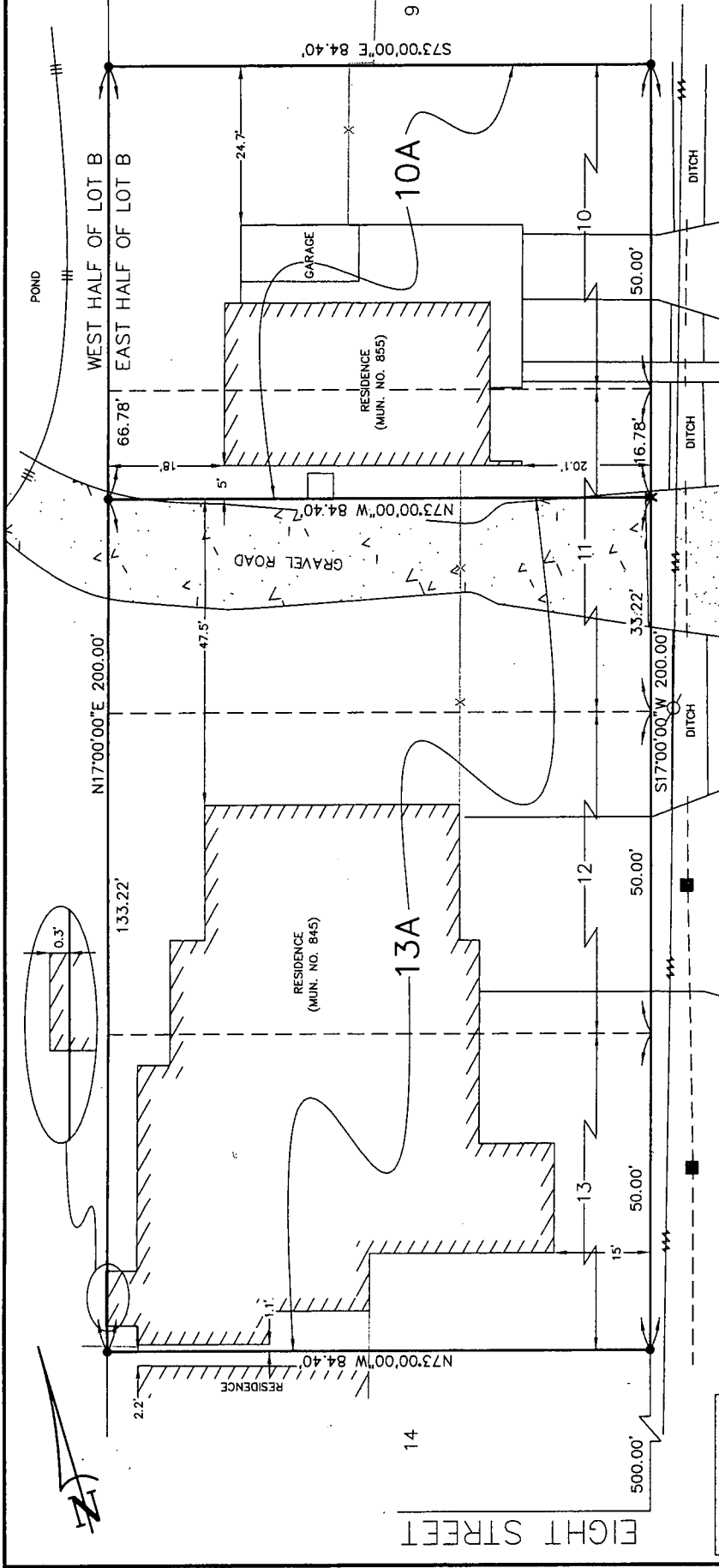
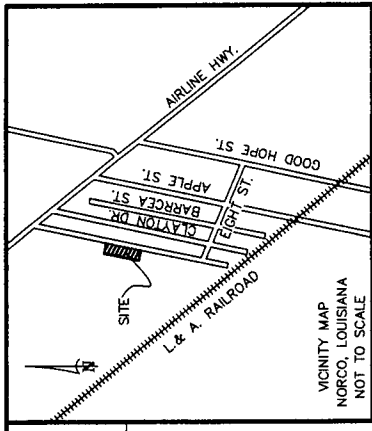
The foregoing resolution having been submitted to a vote, the vote thereon was as follows:

YEAS: SCHEXNAYDRE, AUTHEMENT, RAYMOND, TASTET, BENEDETTO, HOGAN, COCHRAN, LAMBERT, NUSS  
NAYS: NONE  
ABSENT: NONE

And the resolution was declared adopted this 17th day of August, 2009, to become effective five (5) days after publication in the Official Journal.

CHAIRMAN:   
SECRETARY:   
DLVD/PARISH PRESIDENT: August 18, 2009  
APPROVED:  DISAPPROVED: \_\_\_\_\_

PARISH PRESIDENT:   
RETD/SECRETARY: August 18, 2009  
AT: 4:20 pm RECD BY: 



AREA	5,637 SQ. FT.	11,245 SQ. FT.
LOT 10A		
LOT 13A		

APPROVED: *[Signature]* 8/20/09 DATE  
 CHAIRMAN, PARISH COUNCIL  
*[Signature]* 8/25/09 DATE  
 PARISH PRESIDENT  
*[Signature]* 8/26/09 DATE  
 DIRECTOR, DEPT. OF PLANNING AND ZONING

CERTIFICATION: THIS IS TO CERTIFY THAT THIS PLAT IS MADE IN ACCORDANCE WITH LA. REVISED STATUTES 33:5051 ET. SEQ. AND CONFORMS TO ALL PARISH ORDINANCES GOVERNING THE SUBDIVISION OF LAND.

RECORDED IN THE CLERK OF COURT'S OFFICE  
 ST. CHARLES PARISH ON THE \_\_\_\_\_  
 DAY OF \_\_\_\_\_ IN BOOK \_\_\_\_\_  
 FOLIO \_\_\_\_\_ ENTRY # \_\_\_\_\_

**TITLE:** SURVEY PLAT AND RESUBDIVISION OF LOTS 10, 11, 12 & 13 BLOCK 3, BEING A PORTION OF THE SUBDIVISION OF THE EAST HALF OF LOT B, GOOD HOPE PLANTATION SUBDIVISION INTO LOTS HEREIN DESIGNATED AS LOT 10A & 13A BLOCK 3, BEING A PORTION OF THE SUBDIVISION OF THE EAST HALF OF LOT B, GOOD HOPE PLANTATION SUBDIVISION SITUATED IN SECTION 6, T-12-S, R-8-E, NORCO, ST. CHARLES PARISH, LOUISIANA.

**DATE:** MAY 1, 2009

**SURVEY REFERENCE:** SUBDIVISION OF PART OF THE EAST HALF OF LOT B BY E.M. COLLIER, C.E. DATED OCTOBER 1952

**BASIS OF BEARING:** TAKEN FROM REFERENCED SURVEY PLAT.

**FLOOD NOTE:** THE SURVEYED PARCEL IS IN ZONE "AE" PER FEDERAL INSURANCE RATE MAP NUMBER 220160-0050L0MR DATED 5/2/2003.

**SURVEYOR'S NOTES:**

- I CERTIFY THAT THIS PLAT REPRESENTS AN ACTUAL GROUND SURVEY MADE BY ME AND CONFORMS TO THE REQUIREMENTS FOR THE MINIMUM STANDARDS FOR PROPERTY BOUNDARY SURVEYS AS FOUND IN LOUISIANA ADMINISTRATIVE CODE TITLE 46:XXI, CHAPTER 25 FOR A CLASS "C" SURVEY.
- NO TITLE OPINION WAS PROVIDED TO THIS FIRM, THEREFORE NO CERTIFICATION IS GIVEN TO THE EXISTENCE OF OTHER SERVITUDES OR EASEMENTS WHICH MAY EXIST OTHER THAN THOSE SHOWN.
- MINIMUM SETBACK LINES AND SERVITUDES SHOWN ARE BASED ON THE REFERENCED SURVEY PLAT. THE APPROPRIATE PARISH AUTHORITY OR NEIGHBORHOOD REGULATORY BOARD SHOULD BE CONSULTED FOR FINAL DETERMINATION.

**LEGEND**

- #4 IRON ROD SET
- ✕ CROSS CUT
- POWER POLE
- POWER LINE
- CATCH BASIN
- FENCE

20 10 0 20 40 60

SCALE IN FEET  
1" = 20'

DRAWN BY: KPB DRAWING NO. M9583

**RIVERLANDS SURVEYING COMPANY**

505 HEMLOCK STREET  
 LAPLACE, LA. 70068  
 1-800-248-6982  
 985-652-6356

*[Signature]*  
 STEPHEN P. FLYNN  
 P.L.S./LA. ST. REG. NO. 4668