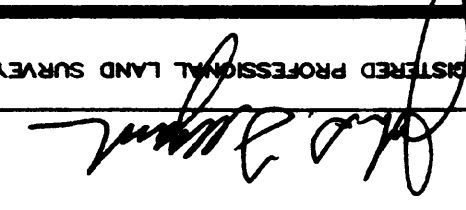


GENERAL NOTES

THE LOCATIONS OF UNDERGROUND AND OTHER NONVISIBLE UTILITIES SHOWN HEREON HAVE BEEN DETERMINED FROM DATA EITHER FURNISHED BY THE AGENCIES CONTROLLING SUCH DATA AND/OR EXTRACTED FROM RECORDS MADE AVAILABLE TO US BY THE AGENCIES CONTROLLING SUCH RECORDS. WHERE FOUND THE SURFACE FEATURES OF LOCATIONS ARE SHOWN. THE ACTUAL NONVISIBLE LOCATIONS MAY VARY FROM THOSE SHOWN HEREON. EACH AGENCY SHOULD BE CONTACTED PRIOR TO THE PRECISE LOCATION OF ITS UNDERGROUND INSTALLATION PRIOR TO ANY RELIANCE UPON THE ACCURACY OF SUCH LOCATIONS SHOWN HEREON, INCLUDING PRIOR TO EXCAVATION AND DIGGING.

REGISTERED PROFESSIONAL LAND SURVEYOR

 B.J.M.
 CORPORATION, L.L.C.
 PROFESSIONAL LAND SURVEYORS
 534 WILLIAMS BOULEVARD
 SUITE 100
 MONROE, LOUISIANA 70002
 Phone No. (504) 487-0005
 Fax No. (504) 487-0005
 E-mail: bjm@bjmcorp.com

PORT CARGO SERVICE PCS.
 A RESUBDIVISION OF PARCEL S-1A
 INTO PARCELS S-1C, S-1D & S-1B-2
 ST. CHARLES PARISH, LOUISIANA
 FAIRVIEW PLANTATION, SECTION 39, T12S, R9E

RECORDED IN THE CLERK OF
 COURTS OFFICE, ST. CHARLES PARISH
 ON THE _____ DAY OF _____ 20____
 IN CONVEYANCE BOOK _____
 FOLIO _____
 ENTRY NO. _____

CERTIFIED CORRECT TO:
 AIRLINE HIGHWAY COMMERCIAL CENTER, L.L.C.
 FIRST AMERICAN TITLE INSURANCE CORPORATION
 GENERAL ELECTRIC CAPITAL CORPORATION

REFERENCE MAP:
 ALTA/ACSM LAND TITLE SURVEY OF PORTION
 OF PARCEL S-1 FAIRVIEW PLANTATION, BY
 B.F.M. CORPORATION, DATED 12-17-96.
 RESUBDIVISION SURVEY OF PORTION OF
 PARCEL S-1 INTO S-1A AND S-1B, FAIRVIEW PLANTATION,
 BY B.F.M. CORPORATION, DATED 6-29-04.
 RESUBDIVISION SURVEY OF PORTION OF
 PARCEL S-1 INTO S-1A AND S-1B, FAIRVIEW PLANTATION,
 BY B.F.M. CORPORATION, DATED 6-14-05.
 I CONSULTED WITH THE FEDERAL INSURANCE ADMINISTRATION
 FLOOD HAZARD BOUNDARY MAPS AND FOUND THAT THIS
 PROPERTY IS IN A SPECIAL FLOOD HAZARD AREA.
 F. I. A. ZONE: "A99"
 COMMUNITY PANEL NO. 220180 0150 C
 DATED 06/16/92, REVISED 05/02/03

DATE: OCTOBER 12, 2005
 DRAWN BY: R.A.H.
 PROJECT NO. F-5471-2005
 SHEET 1 OF 1

SCALE: 1" = 60'

PLANNING COMMISSION CHAIRMAN _____ DATE _____
 PARISH PRESIDENT _____ DATE _____
 PARISH COUNCIL CHAIRMAN _____ DATE _____

APPROVAL:

APPROVAL:

APPROVAL:

APPROVAL:

APPROVAL:

APPROVAL:

APPROVAL:

APPROVAL:

APPROVAL:

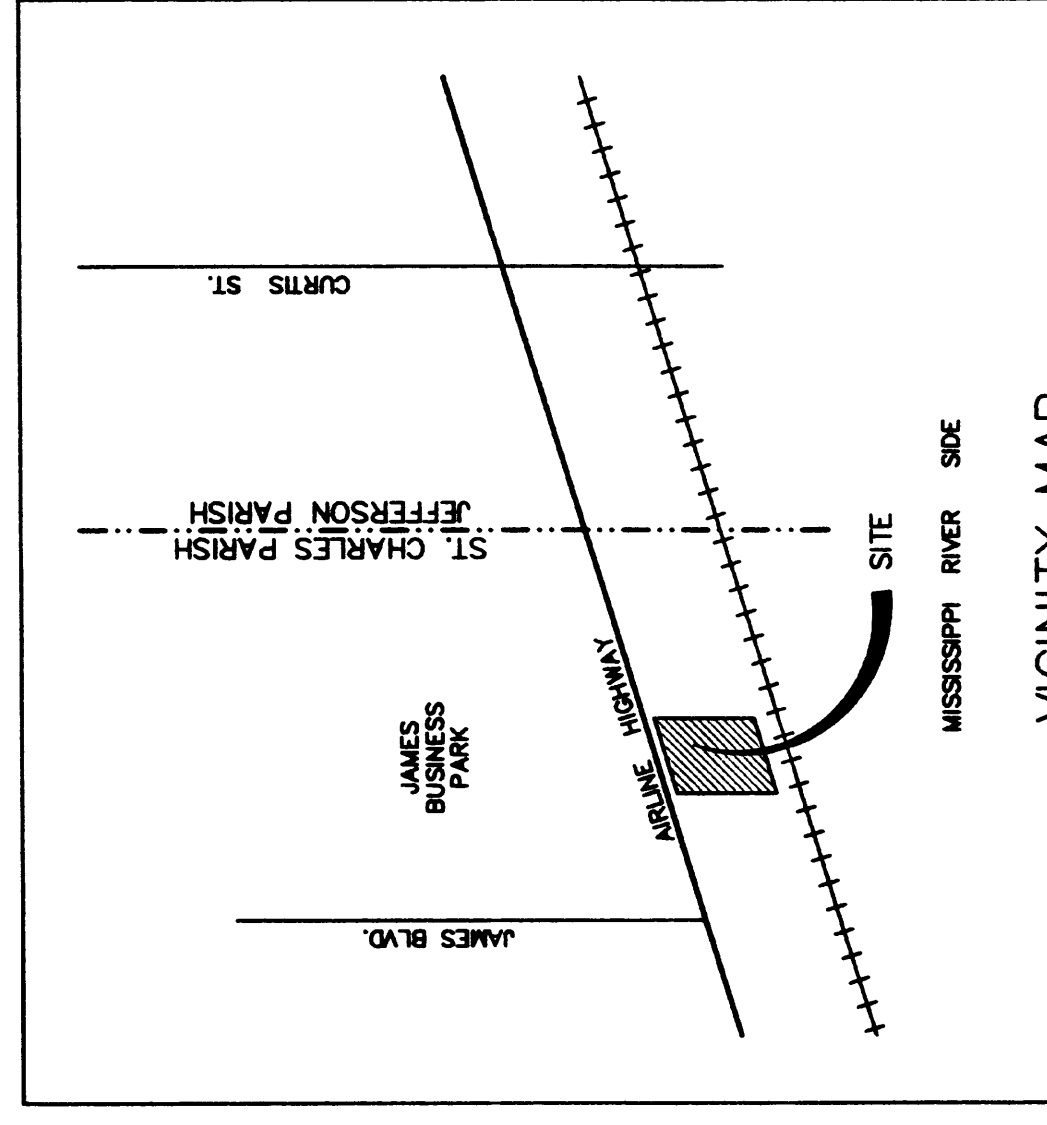
APPROVAL:

APPROVAL:

APPROVAL:

APPROVAL:

APPROVAL:



CERTIFIED CORRECT TO:
 AIRLINE HIGHWAY COMMERCIAL CENTER, L.L.C.
 FIRST AMERICAN TITLE INSURANCE CORPORATION
 GENERAL ELECTRIC CAPITAL CORPORATION

RECORDED IN THE CLERK OF
 COURTS OFFICE, ST. CHARLES PARISH
 ON THE _____ DAY OF _____ 20____
 IN CONVEYANCE BOOK _____
 FOLIO _____
 ENTRY NO. _____

CERTIFIED CORRECT TO:
 AIRLINE HIGHWAY COMMERCIAL CENTER, L.L.C.
 FIRST AMERICAN TITLE INSURANCE CORPORATION
 GENERAL ELECTRIC CAPITAL CORPORATION

REFERENCE MAP:
 ALTA/ACSM LAND TITLE SURVEY OF PORTION
 OF PARCEL S-1 FAIRVIEW PLANTATION, BY
 B.F.M. CORPORATION, DATED 12-17-96.
 RESUBDIVISION SURVEY OF PORTION OF
 PARCEL S-1 INTO S-1A AND S-1B, FAIRVIEW PLANTATION,
 BY B.F.M. CORPORATION, DATED 6-29-04.
 RESUBDIVISION SURVEY OF PORTION OF
 PARCEL S-1 INTO S-1A AND S-1B, FAIRVIEW PLANTATION,
 BY B.F.M. CORPORATION, DATED 6-14-05.
 I CONSULTED WITH THE FEDERAL INSURANCE ADMINISTRATION
 FLOOD HAZARD BOUNDARY MAPS AND FOUND THAT THIS
 PROPERTY IS IN A SPECIAL FLOOD HAZARD AREA.
 F. I. A. ZONE: "A99"
 COMMUNITY PANEL NO. 220180 0150 C
 DATED 06/16/92, REVISED 05/02/03

DATE: OCTOBER 12, 2005
 DRAWN BY: R.A.H.
 PROJECT NO. F-5471-2005
 SHEET 1 OF 1

SCALE: 1" = 60'

PLANNING COMMISSION CHAIRMAN _____ DATE _____
 PARISH PRESIDENT _____ DATE _____
 PARISH COUNCIL CHAIRMAN _____ DATE _____

APPROVAL:

APPROVAL:

APPROVAL:

APPROVAL:

APPROVAL:

APPROVAL:

APPROVAL:

APPROVAL:

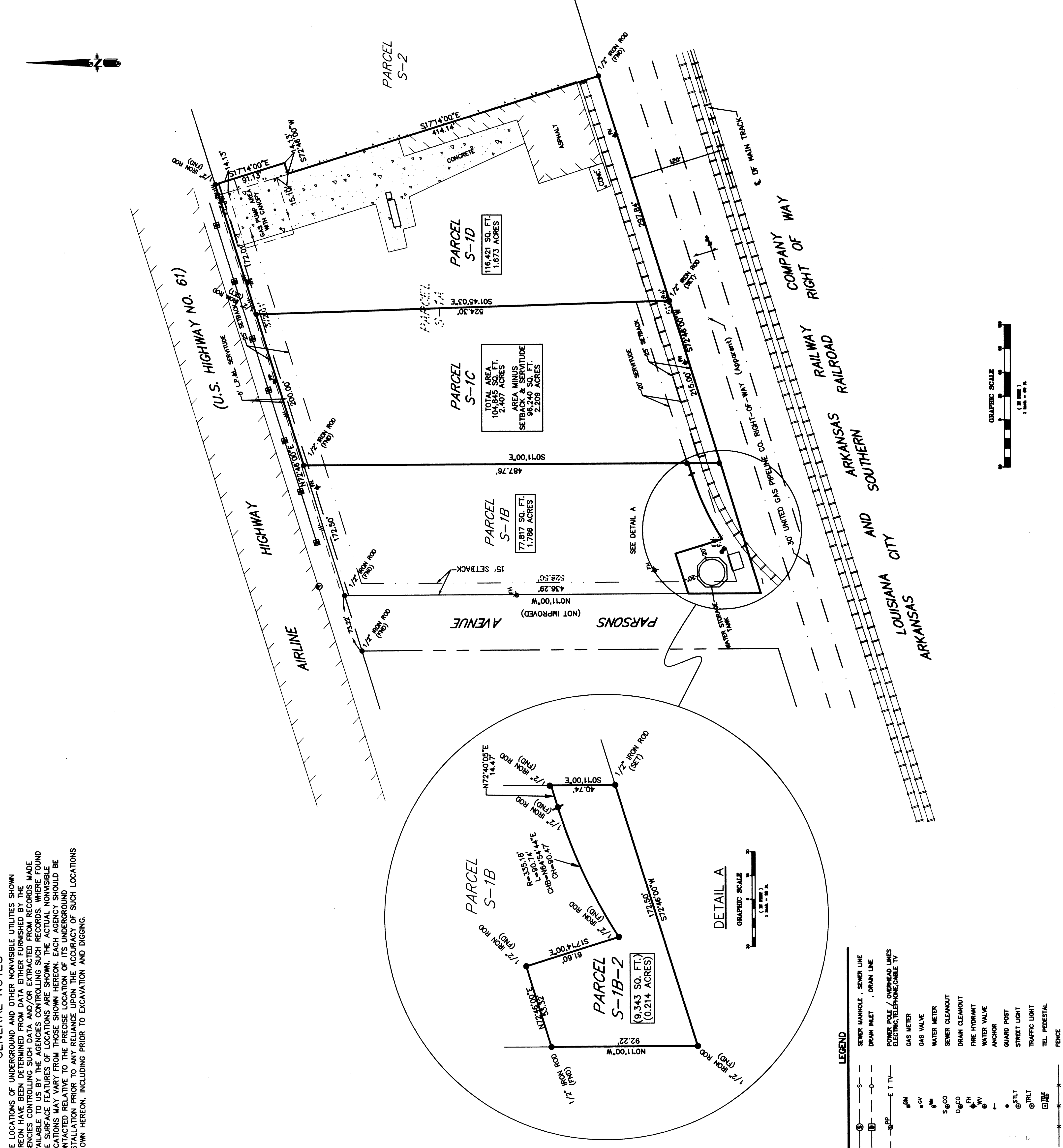
APPROVAL:

APPROVAL:

APPROVAL:

APPROVAL:

APPROVAL:



LEGEND

	SEWER MANHOLE, SEWER LINE
	DRAIN INLET, DRAIN LINE
	POWER POLE / OVERHEAD LINES ELECTRIC/TELEPHONE/CABLE TV
	GAS METER
	GAS VALVE
	WATER METER
	SEWER CLEANOUT
	DRAIN CLEANOUT
	FIRE HYDRANT
	WATER VALVE
	ANCHOR
	GUARD POST
	STREET LIGHT
	TRAFFIC LIGHT
	TEL. PEDESTAL
	FENCE

