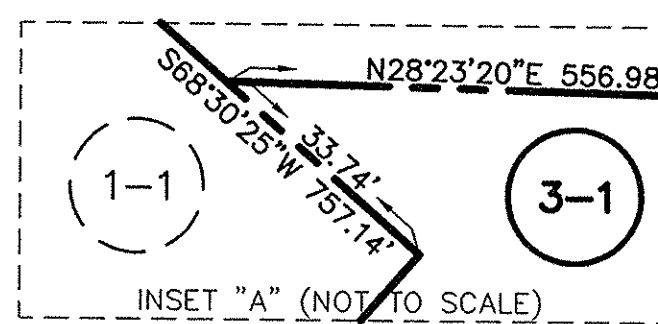
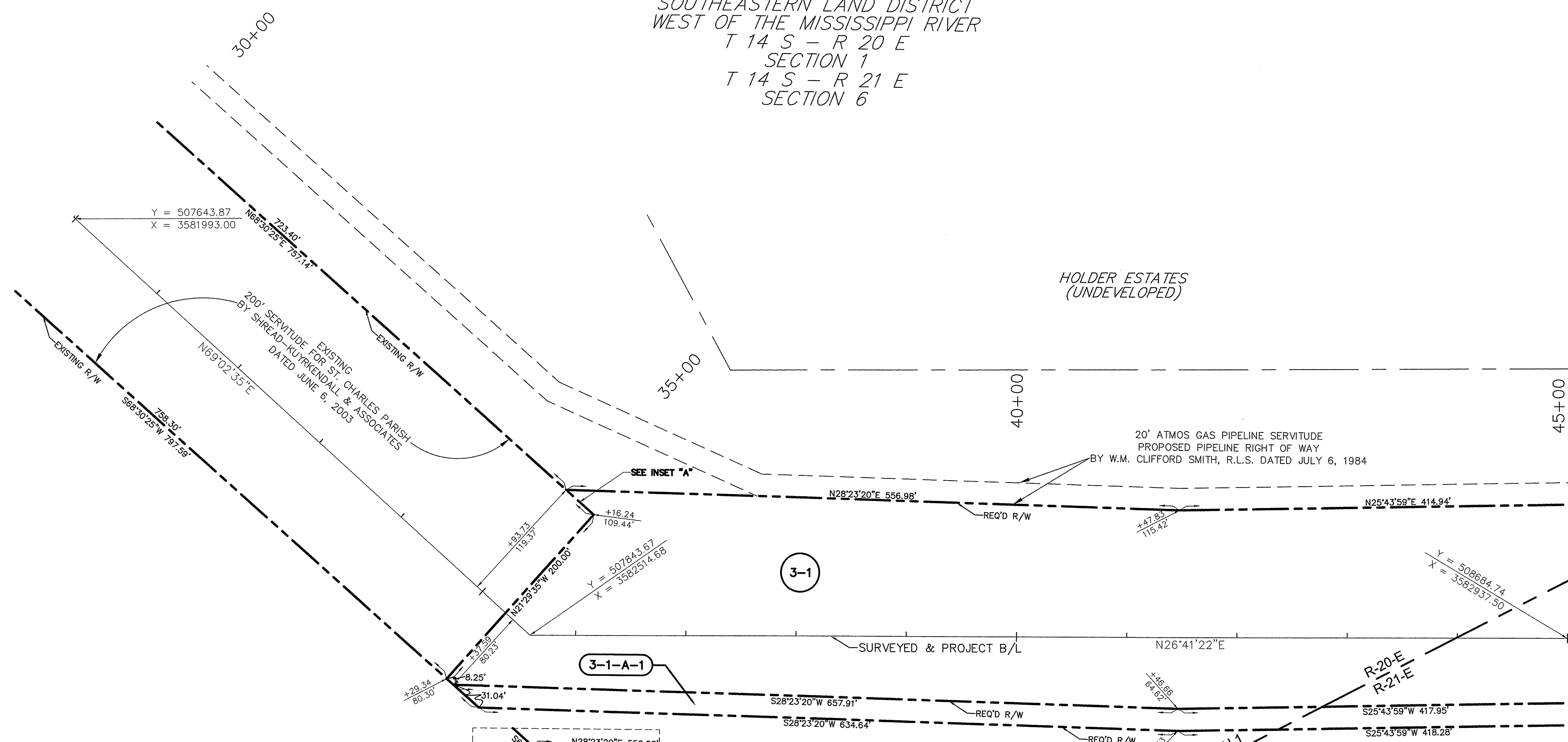
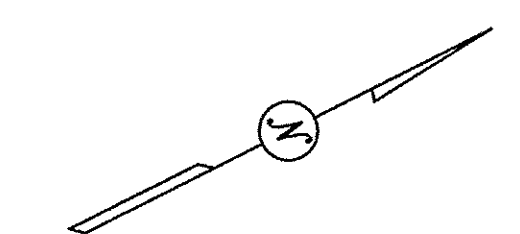


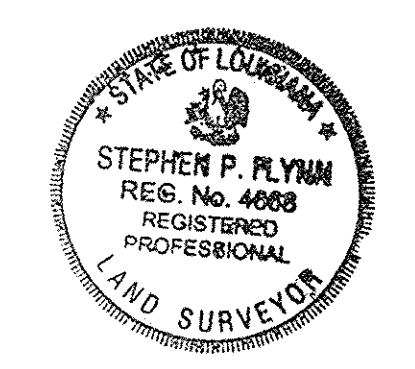
SOUTHEASTERN LAND DISTRICT
WEST OF THE MISSISSIPPI RIVER
T 14 S - R 20 E
SECTION 1
T 14 S - R 21 E
SECTION 6



ELEVATIONS OR COORDINATES BASED ON:
DESIGNATION: BA01 SM01
PID: DH3816
STATE/COUNTY: LA/ST. CHARLES PARISH
USGS QUAD: LULING (1992)
NAD 83 (2007): 29°55'01.64\"(N) 90°18'58.55\"(W) ADJUSTED
NAVD 88: 1.74 (METERS) 5.70 (FEET)
GPS OBS: 2006.81
RETRIEVAL DATE: DECEMBER 8, 2010
BEARINGS SHOWN HEREON ARE GRID
BEARINGS BASED ON THE LOUISIANA STATE
PLANE COORDINATE SYSTEM SOUTH ZONE
NAD 83 (1992).

LEGEND

---	REQUIRED RIGHT OF WAY LINE
---	PROPERTY LINE
---	LOT LINE
---	LIMITS OF CONSTRUCTION
---	EXISTING RIGHT OF WAY LINE
---	SECTION LINE
---	DRAINAGE SERVITUDE



I CERTIFY THAT THIS PLAT REPRESENTS AN ACTUAL ROUTE SURVEY MADE BY ME, OR BY THOSE UNDER MY DIRECTION AND COMPLIES WITH THE REQUIREMENTS OF LOUISIANA'S "STANDARDS OF PRACTICE FOR BOUNDARY SURVEYS" FOR A CLASS D ROUTE SURVEY SPECIFICALLY CHAPTER 2909 - ROUTE SURVEY.

RESIDUAL ACREAGE NOTE
RESIDUAL ACREAGE'S SHOWN ARE CALCULATED FOR INFORMATION PURPOSES ONLY.
THE RESIDUAL ACREAGE'S ARE SUBJECT TO REVIEW AND VERIFICATION BY TITLE AND SURVEY.

LAFORCHE BASIN LEVEE DISTRICT
AND
PARISH OF ST. CHARLES

RIGHT OF WAY MAP
WEST BANK HURRICANE PROTECTION LEVEE - PHASE III
ELLINGTON
ST. CHARLES PARISH, LOUISIANA
STA. 10+00.00 TO 170+62.80

PARCEL	OWNER	ACQUISITION	AREA	ESTATE TYPE
3-1-A-1	RIDGELAND PROPERTIES, L.L.C.	C.O.B. 499 PG. 718 ENTRY NO. 196872	2.193 AC.	PERPETUAL LEVEE & CHANNEL EASEMENT
3-1	RIDGELAND PROPERTIES, L.L.C.	C.O.B. 499 PG. 718 ENTRY NO. 196872	19.549 AC.	PERPETUAL LEVEE & CHANNEL EASEMENT

DATE	DESCRIPTION	BY
10/16/14	ADDED PARCEL 3-1-A-1, DELETED SEWER SERVITUDE	TPT
	REVISIONS	

RIVERLANDS SURVEYING COMPANY
506 HEMLOCK STREET
LAFAYETTE, LA 70506
1-800-248-6862
985-652-6356

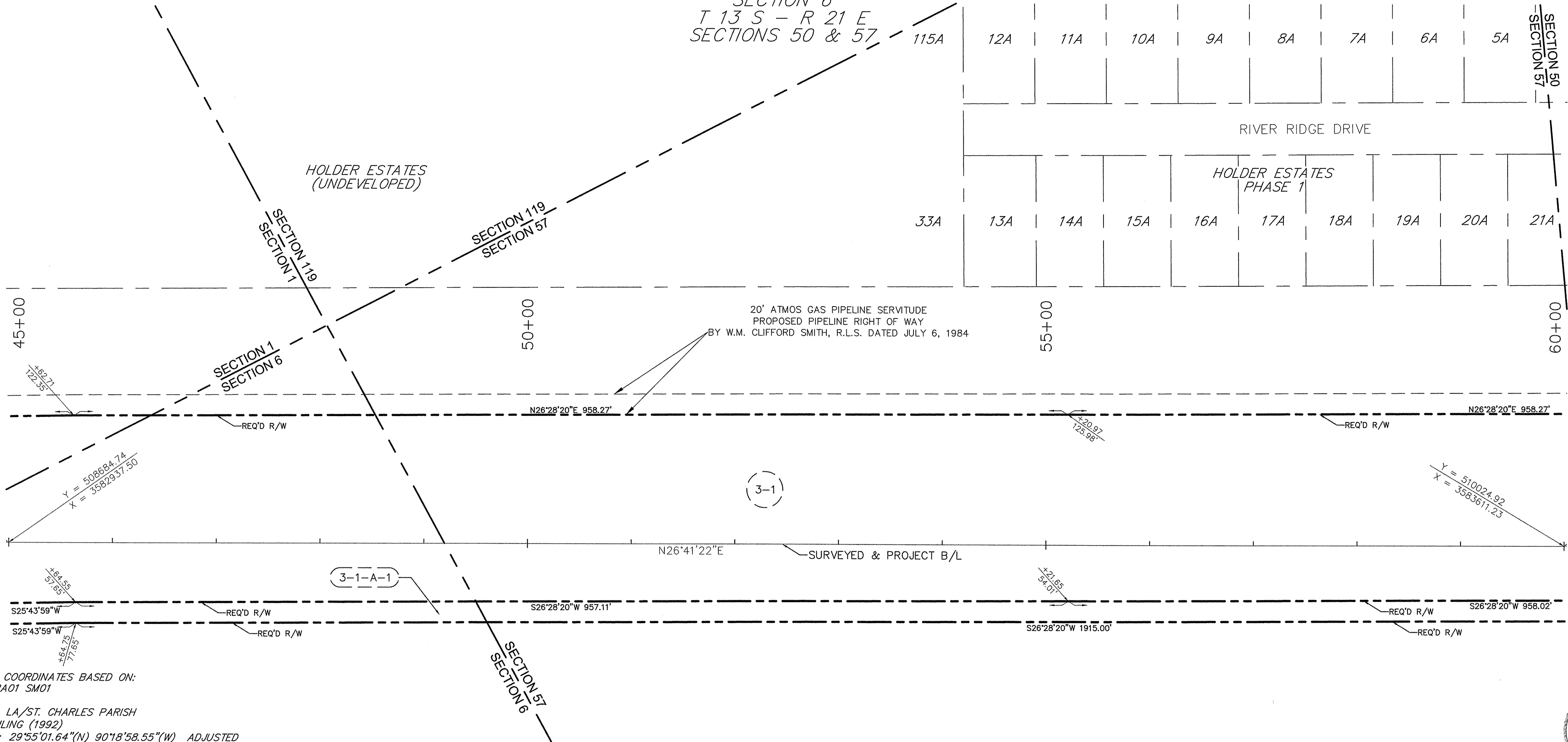
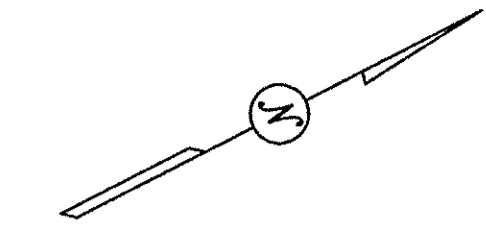
Stephen P. Flynn
STEPHEN P. FLYNN, P.L.S.
LA. ST. REG. NO. 4668

DATE: 04/17/2014 / 100%
SCALE: 1" = 50'
DRAWN BY: T.P.T.
COMPUTED BY: S.P.F.

SHEET NO. 3

S:\Land Projects\R2\ldwgs\L1553\L1553_1790_RSC_ROW_15-2014.dwg 10/16/2014 1:55:22 PM CDT

SOUTHEASTERN LAND DISTRICT
 WEST OF THE MISSISSIPPI RIVER
 T 14 S - R 20 E
 SECTION 1
 T 14 S - R 21 E
 SECTION 6
 T 13 S - R 21 E
 SECTIONS 50 & 57



S:\Land Projects R2\LDwg\1553_L1553_W01790_RSC_ROW_Revise09-15-2014.dwg 10/16/2014 1:55:22 PM CDT

ELEVATIONS OR COORDINATES BASED ON:
 DESIGNATION: BA01 SM01
 PID: DH3816
 STATE/COUNTY: LA/ST. CHARLES PARISH
 USGS QUAD: LULING (1992)
 NAD 83 (2007): 29°55'01.64"(N) 90°18'58.55"(W) ADJUSTED
 NAVD 88: 1.74 (METERS) 5.70 (FEET)
 GPS OBS: 2006.81
 RETRIEVAL DATE: DECEMBER 8, 2010

BEARINGS SHOWN HEREON ARE GRID
 BEARINGS BASED ON THE LOUISIANA STATE
 PLANE COORDINATE SYSTEM SOUTH ZONE
 NAD 83 (1992).

LEGEND

- REQUIRED RIGHT OF WAY LINE
- PROPERTY LINE
- LOT LINE
- LIMITS OF CONSTRUCTION
- EXISTING RIGHT OF WAY LINE
- SECTION LINE
- DRAINAGE SERVITUDE

PARCEL	OWNER	ACQUISITION	AREA	ESTATE TYPE

I CERTIFY THAT THIS PLAT REPRESENTS AN ACTUAL ROUTE SURVEY MADE BY ME, OR BY THOSE UNDER MY DIRECTION AND COMPLIES WITH THE REQUIREMENTS OF LOUISIANA'S "STANDARDS OF PRACTICE FOR BOUNDARY SURVEYS" FOR A CLASS D ROUTE SURVEY SPECIFICALLY CHAPTER 2909 - ROUTE SURVEY.

RESIDUAL ACREAGE NOTE
 RESIDUAL ACREAGE'S SHOWN ARE CALCULATED FOR INFORMATION PURPOSES ONLY.
 THE RESIDUAL ACREAGE'S ARE SUBJECT TO REVIEW AND VERIFICATION BY TITLE AND SURVEY.

DATE	DESCRIPTION	BY
10/16/14	ADDED PARCEL 3-1-A-1	TPT

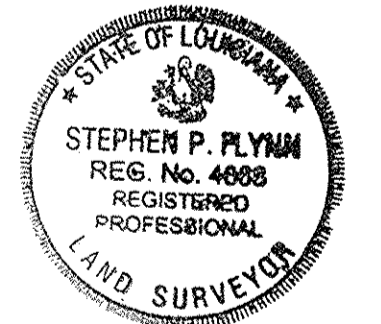
LAFORCHE BASIN LEVEE DISTRICT
 AND
 PARISH OF ST. CHARLES

RIGHT OF WAY MAP
 WEST BANK HURRICANE PROTECTION LEVEE - PHASE III
 ELLINGTON
 ST. CHARLES PARISH, LOUISIANA
 STA. 10+00.00 TO 170+62.80

RIVERLANDS SURVEYING COMPANY
 508 HEMLOCK STREET
 LA PLACE, LA 70002
 1-800-848-6682
 985-652-6366

STEPHEN P. FLYNN, P.L.S.
 LA. ST. REG. NO. 4668

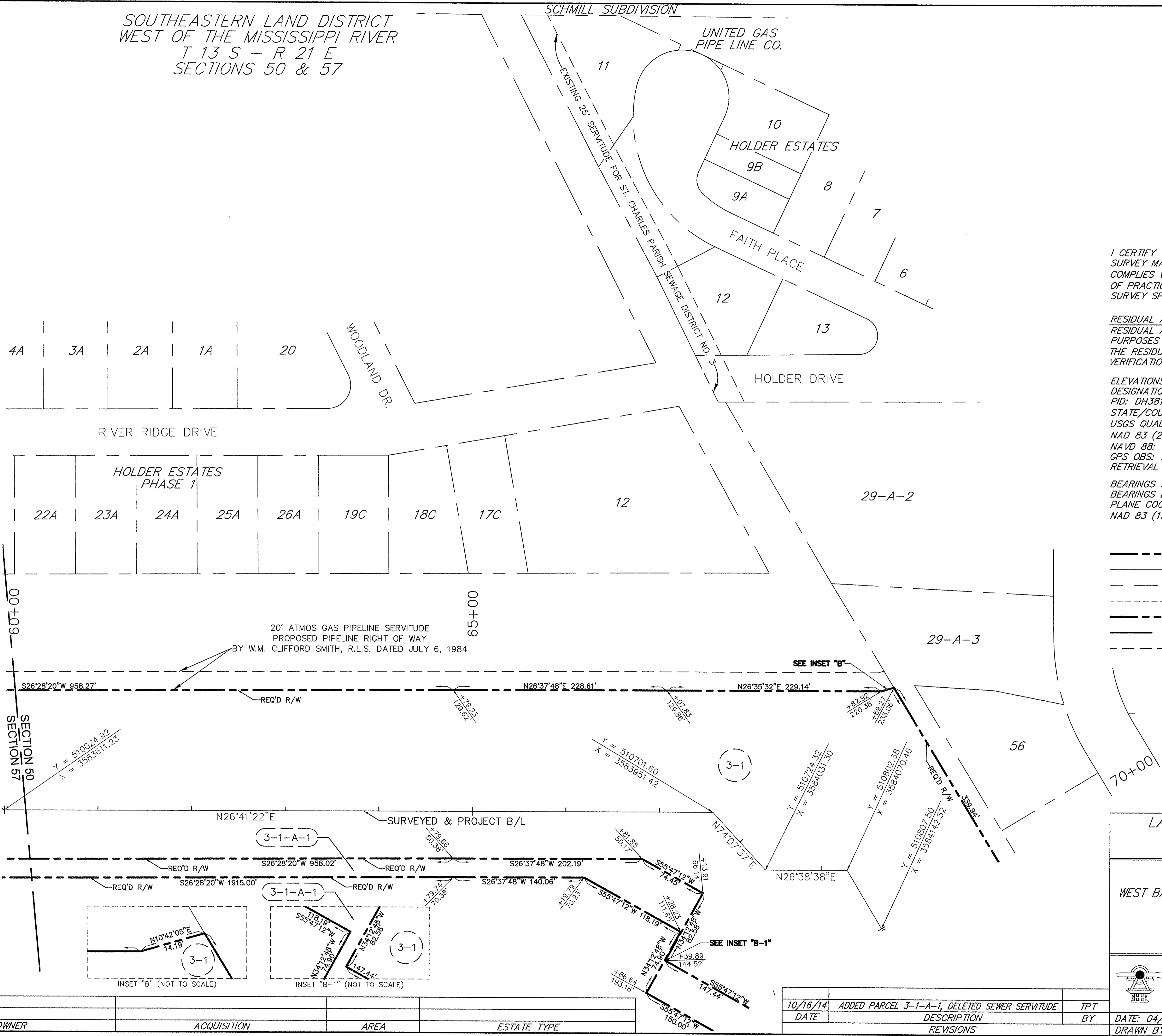
DATE: 04/17/2014 / 100% SCALE: 1" = 50'
 DRAWN BY: T.P.T. COMPUTED BY: S.P.F.



SOUTHEASTERN LAND DISTRICT
WEST OF THE MISSISSIPPI RIVER
T 13 S - R 21 E
SECTIONS 50 & 57

SCHMILL SUBDIVISION

UNITED GAS
PIPE LINE CO.



I CERTIFY THAT THIS PLAT REPRESENTS AN ACTUAL ROUTE SURVEY MADE BY ME, OR BY THOSE UNDER MY DIRECTION AND COMPLIES WITH THE REQUIREMENTS OF LOUISIANA'S "STANDARDS OF PRACTICE FOR BOUNDARY SURVEYS" FOR A CLASS D ROUTE SURVEY SPECIFICALLY CHAPTER 2909 - ROUTE SURVEY.

RESIDUAL ACREAGE NOTE
RESIDUAL ACREAGE'S SHOWN ARE CALCULATED FOR INFORMATION PURPOSES ONLY.
THE RESIDUAL ACREAGE'S ARE SUBJECT TO REVIEW AND VERIFICATION BY TITLE AND SURVEY.

ELEVATIONS OR COORDINATES BASED ON:
DESIGNATION: BA01 SMO1
PID: DH3816
STATE/COUNTY: LA/ST. CHARLES PARISH
USGS QUAD: LULING (1992)
NAD 83 (2007): 29°55'01.64"(N) 90°18'58.55"(W) ADJUSTED
NAVD 88: 1.74 (METERS) 5.70 (FEET)
GPS OBS: 2006.81
RETRIEVAL DATE: DECEMBER 8, 2010

BEARINGS SHOWN HEREON ARE GRID BEARINGS BASED ON THE LOUISIANA STATE PLANE COORDINATE SYSTEM SOUTH ZONE NAD 83 (1992).

LEGEND

- REQUIRED RIGHT OF WAY LINE
- PROPERTY LINE
- LOT LINE
- LIMITS OF CONSTRUCTION
- EXISTING RIGHT OF WAY LINE
- SECTION LINE
- DRAINAGE SERVITUDE



LAFORCHE BASIN LEVEE DISTRICT
AND
PARISH OF ST. CHARLES

RIGHT OF WAY MAP
WEST BANK HURRICANE PROTECTION LEVEE - PHASE III
ELLINGTON
ST. CHARLES PARISH, LOUISIANA
STA. 10+00.00 TO 170+62.80

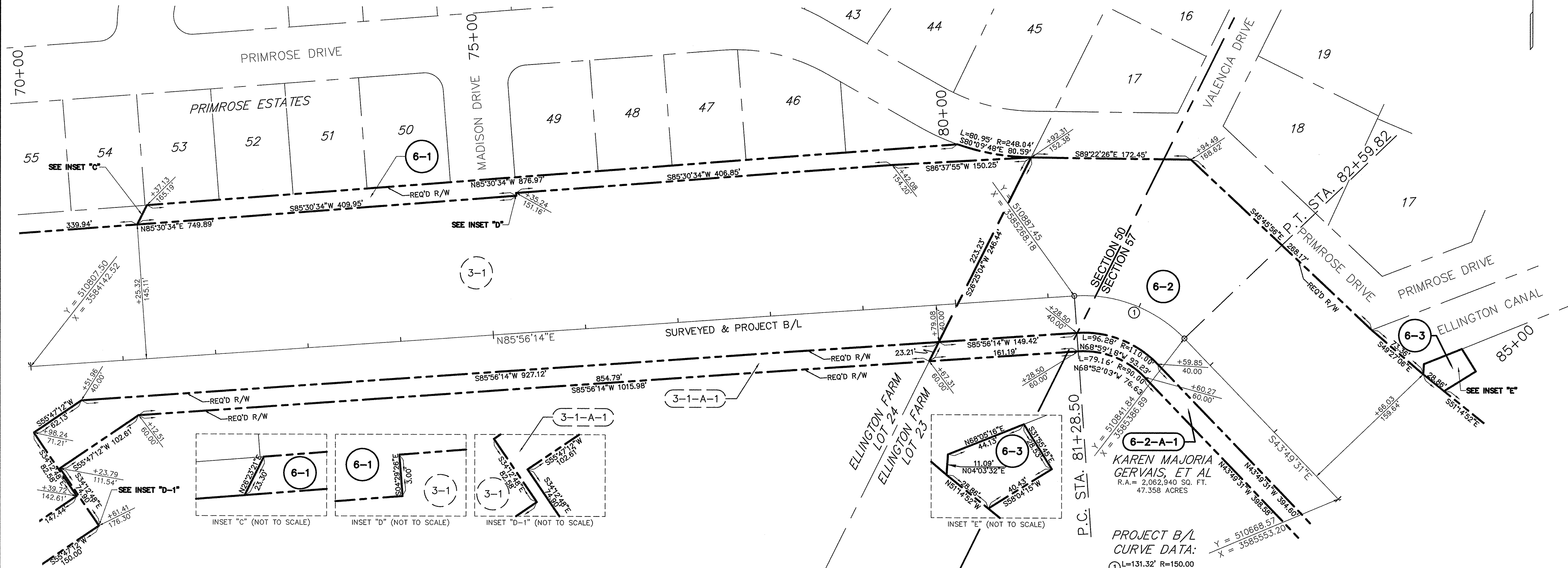
 RIVERLANDS SURVEYING COMPANY 608 HERMLOCK STREET LAFALETTE, LA 70503 1-800-246-6882 855-652-6366	 STEPHEN P. FLYNN, P.L.S. LA. ST. REG. NO. 4688	
	DATE: 04/17/2014 / 100% DRAWN BY: T.P.T.	SCALE: 1" = 50' COMPUTED BY: S.P.F.

DATE	DESCRIPTION	BY
10/16/14	ADDED PARCEL 3-1-A-1, DELETED SEWER SERVITUDE	TPT
	REVISIONS	

PARCEL	OWNER	ACQUISITION	AREA	ESTATE TYPE

S:\Land Projects R2\Lawgs\L1553\L1553_W01790_RSC_ROW_09-15-2014.dwg 10/16/2014 1:55:22 PM CDT

SOUTHEASTERN LAND DISTRICT
WEST OF THE MISSISSIPPI RIVER
T 13 S - R 21 E
SECTIONS 50 & 57



ELEVATIONS OR COORDINATES BASED ON:
DESIGNATION: BA01 SM01
PID: DH3816
STATE/COUNTY: LA/ST. CHARLES PARISH
USGS QUAD: LULING (1992)
NAD 83 (2007): 29°55'01.64"(N) 90°18'58.55"(W) ADJUSTED
NAVD 88: 1.74 (METERS) 5.70 (FEET)
GPS OBS: 2006.81
RETRIEVAL DATE: DECEMBER 8, 2010
BEARINGS SHOWN HEREON ARE GRID
BEARINGS BASED ON THE LOUISIANA STATE
PLANE COORDINATE SYSTEM SOUTH ZONE
NAD 83 (1992).

LEGEND

- REQUIRED RIGHT OF WAY LINE
- PROPERTY LINE
- LOT LINE
- LIMITS OF CONSTRUCTION
- EXISTING RIGHT OF WAY LINE
- SECTION LINE
- DRAINAGE SERVITUDE

PARCEL	OWNER	ACQUISITION	AREA	ESTATE TYPE
6-3	JUAN C. DUCHESNE	C.O.B. 795 PG. 55 ENTRY NO. 394404	0.034 AC.	PERPETUAL DRAINAGE EASEMENT
6-2-A-1	KAREN MAJORIA GERVAIS, ET AL	C.O.B. 235 PG. 389 ENTRY NO. 71617	0.326 AC.	PERPETUAL LEVEE & CHANNEL EASEMENT
6-2	KAREN MAJORIA GERVAIS, ET AL	C.O.B. 235 PG. 389 ENTRY NO. 71617	3.142 AC.	PERPETUAL LEVEE & CHANNEL EASEMENT
6-1	RIDGELAND PROPERTIES, L.L.C.	C.O.B. 499 PG. 718 ENTRY NO. 196872	0.386 AC.	PERPETUAL DRAINAGE EASEMENT

I CERTIFY THAT THIS PLAT REPRESENTS AN ACTUAL ROUTE SURVEY MADE BY ME, OR BY THOSE UNDER MY DIRECTION AND COMPLIES WITH THE REQUIREMENTS OF LOUISIANA'S "STANDARDS OF PRACTICE FOR BOUNDARY SURVEYS" FOR A CLASS D ROUTE SURVEY SPECIFICALLY CHAPTER 2909 - ROUTE SURVEY.

RESIDUAL ACREAGE NOTE
RESIDUAL ACREAGE'S SHOWN ARE CALCULATED FOR INFORMATION PURPOSES ONLY.
THE RESIDUAL ACREAGE'S ARE SUBJECT TO REVIEW AND VERIFICATION BY TITLE AND SURVEY.

DATE	DESCRIPTION	TPT	BY
10/16/14	ADDED PARCELS 3-1-A-1 & 6-2-A-1, DELETED SEWER SERVITUDE		
	REVISIONS		

LAFORCHE BASIN LEVEE DISTRICT
AND
PARISH OF ST. CHARLES

RIGHT OF WAY MAP
WEST BANK HURRICANE PROTECTION LEVEE - PHASE III
ELLINGTON
ST. CHARLES PARISH, LOUISIANA
STA. 10+00.00 TO 170+62.80

RIVERLANDS SURVEYING COMPANY
608 HEMLOCK STREET
LAFAYETTE, LA 70503
1-800-248-6882
989-652-6356

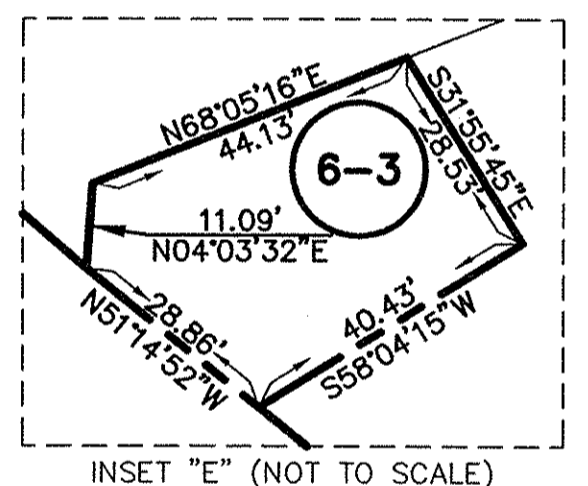
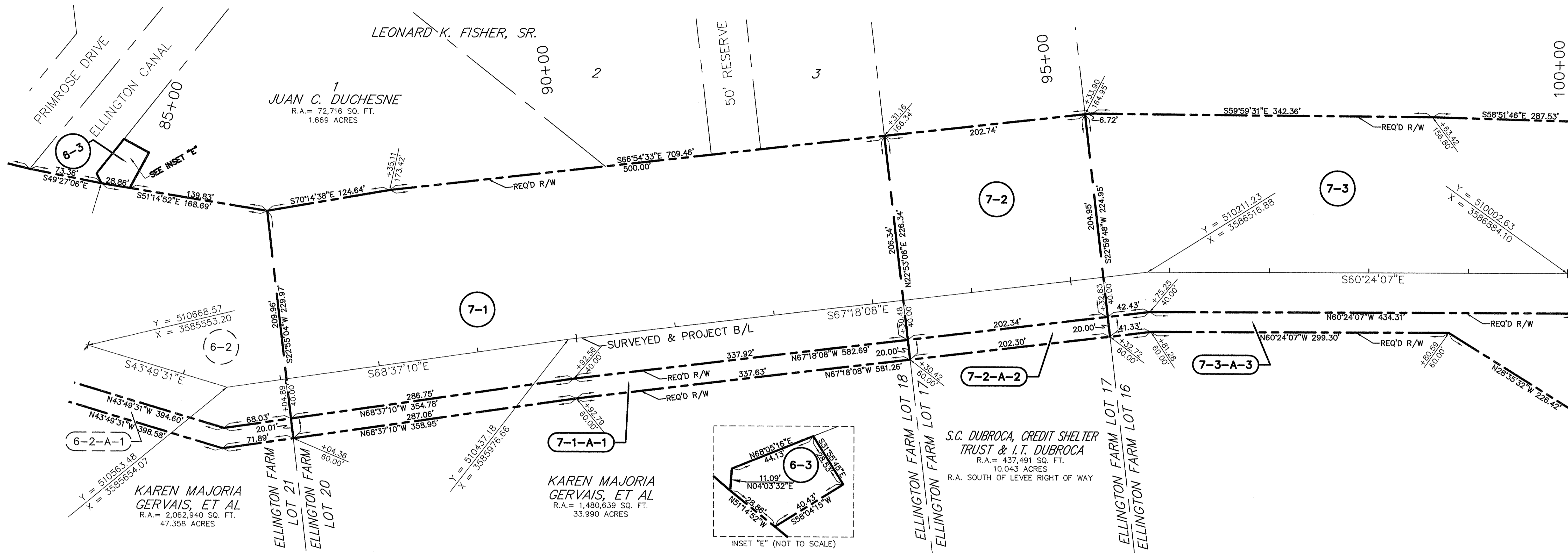
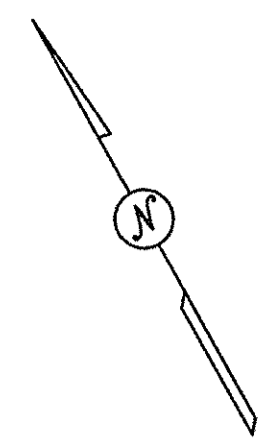
STEPHEN P. FLYNN, P.L.S.
LA. ST. REG. NO. 4668

DATE: 04/17/2014 / 100% SCALE: 1" = 50'
DRAWN BY: T.P.T. COMPUTED BY: S.P.F. SHEET NO. 6



S:\Land Projects R2\LDwgs\L1553_L1553_W01790_RSC_ROW_15-2014.dwg 10/16/2014 1:55:22 PM CDT

SOUTHEASTERN LAND DISTRICT
WEST OF THE MISSISSIPPI RIVER
T 13 S - R 21 E
SECTION 57



ELEVATIONS OR COORDINATES BASED ON:
DESIGNATION: BA01 SM01
PID: DH3816
STATE/COUNTY: LA/ST. CHARLES PARISH
USGS QUAD: LULING (1992)
NAD 83 (2007): 29°55'01.64"(N) 90°18'58.55"(W) ADJUSTED
NAVD 88: 1.74 (METERS) 5.70 (FEET)
GPS OBS: 2006.81
RETRIEVAL DATE: DECEMBER 8, 2010
BEARINGS SHOWN HEREON ARE GRID
BEARINGS BASED ON THE LOUISIANA STATE
PLANE COORDINATE SYSTEM SOUTH ZONE
NAD 83 (1992).

LEGEND

- REQUIRED RIGHT OF WAY LINE
- PROPERTY LINE
- LOT LINE
- LIMITS OF CONSTRUCTION
- EXISTING RIGHT OF WAY LINE
- SECTION LINE
- DRAINAGE SERVITUDE

PARCEL	OWNER	ACQUISITION	AREA	ESTATE TYPE
7-3-A-3	RIDGELAND PROPERTIES, L.L.C.	C.O.B. 499 PG. 718 ENTRY NO. 196872	0.681 AC.	PERPETUAL LEVEE & CHANNEL EASEMENT
7-3	RIDGELAND PROPERTIES, L.L.C.	C.O.B. 499 PG. 718 ENTRY NO. 196872	3.018 AC.	PERPETUAL LEVEE & CHANNEL EASEMENT
7-2-A-2	S.C. DUBROCA, CREDIT SHELTER TRUST & I.T. DUBROCA	C.O.B. 502 PG. 139 ENTRY NO. 198300	0.093 AC.	PERPETUAL LEVEE & CHANNEL EASEMENT
7-2	S.C. DUBROCA, CREDIT SHELTER TRUST & I.T. DUBROCA	C.O.B. 502 PG. 139 ENTRY NO. 198300	0.956 AC.	PERPETUAL LEVEE & CHANNEL EASEMENT
7-1-A-1	KAREN MAJORIA GERVAIS, ET AL	C.O.B. 201 PG. 565 ENTRY NO. 59972	0.287 AC.	PERPETUAL LEVEE & CHANNEL EASEMENT
7-1	KAREN MAJORIA GERVAIS, ET AL	C.O.B. 201 PG. 565 ENTRY NO. 59972	3.000 AC.	PERPETUAL LEVEE & CHANNEL EASEMENT

I CERTIFY THAT THIS PLAT REPRESENTS AN ACTUAL ROUTE SURVEY MADE BY ME, OR BY THOSE UNDER MY DIRECTION AND COMPLIES WITH THE REQUIREMENTS OF LOUISIANA'S "STANDARDS OF PRACTICE FOR BOUNDARY SURVEYS" FOR A CLASS D ROUTE SURVEY SPECIFICALLY CHAPTER 2909 - ROUTE SURVEY.

RESIDUAL ACREAGE NOTE
RESIDUAL ACREAGE'S SHOWN ARE CALCULATED FOR INFORMATION PURPOSES ONLY.
THE RESIDUAL ACREAGE'S ARE SUBJECT TO REVIEW AND VERIFICATION BY TITLE AND SURVEY.

DATE	DESCRIPTION REVISIONS	BY
10/16/14	ADDED PARCELS 6-2-A-1, 7-1-A-1, 7-2-A-2 & 7-3-A-3, DELETED SEWER SERVITUDE	TPT

LAFORCHE BASIN LEVEE DISTRICT
AND
PARISH OF ST. CHARLES

RIGHT OF WAY MAP
WEST BANK HURRICANE PROTECTION LEVEE - PHASE III
ELLINGTON
ST. CHARLES PARISH, LOUISIANA
STA. 10+00.00 TO 170+62.80

RIVERLANDS SURVEYING COMPANY
305 HEMLOCK STREET
LAFAYETTE, LA 70003
1-800-348-6356
085-652-6356

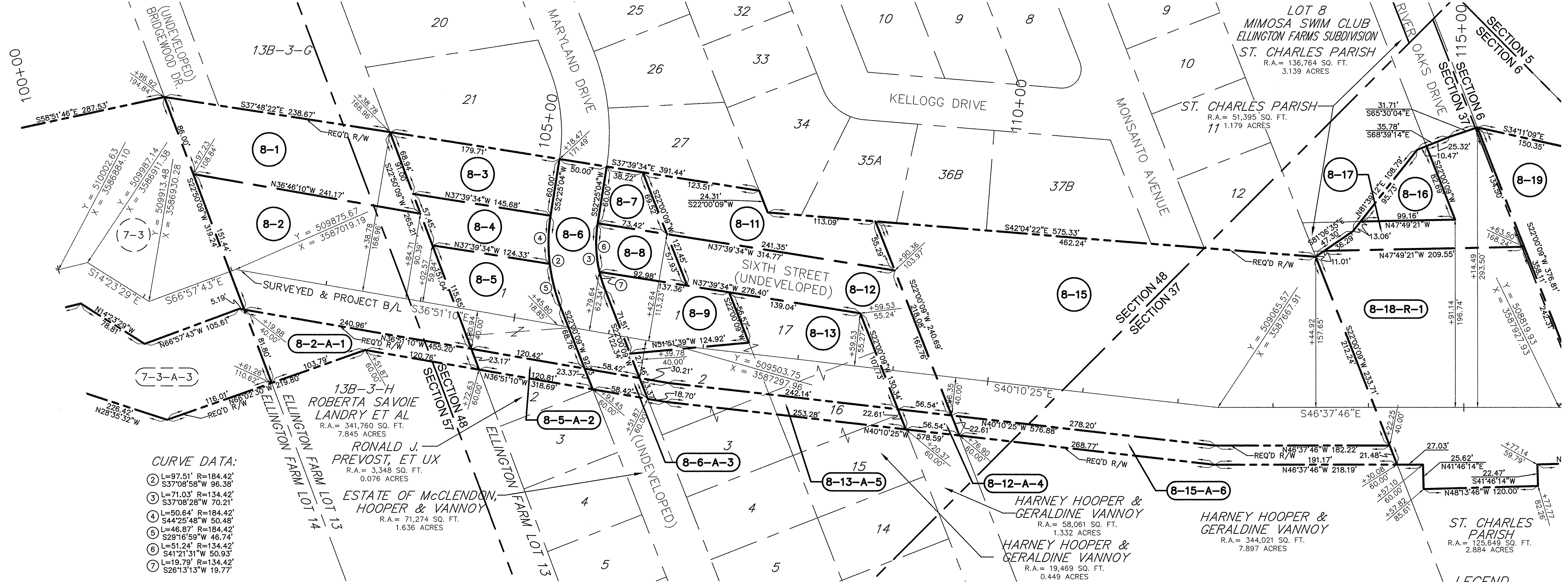
STEPHEN P. FLYNN, P.L.S.
LA. ST. REG. NO. 4668

DATE: 04/17/2014 / 100% SCALE: 1" = 50'
DRAWN BY: T.P.T. COMPUTED BY: S.P.F. SHEET NO. 7



S:\Land Projects R2\ldwgs\L1553_V01790_RSC_ROW_10/16/2014 1:55:22 PM.CDT

SOUTHEASTERN LAND DISTRICT
 WEST OF THE MISSISSIPPI RIVER
 T 13 S - R 21 E
 SECTIONS 48 & 57
 T 14 S - R 21 E
 SECTIONS 5, 6 & 37



CURVE DATA:

②	L=97.51' R=184.42'	S37°08'58"W 96.38'
③	L=71.03' R=134.42'	S37°08'28"W 70.21'
④	L=50.64' R=184.42'	S44°25'48"W 50.48'
⑤	L=46.87' R=184.42'	S29°16'59"W 46.74'
⑥	L=51.24' R=134.42'	S41°21'31"W 50.93'
⑦	L=19.79' R=134.42'	S26°13'13"W 19.77'

ELEVATIONS OR COORDINATES BASED ON:
 DESIGNATION: BA01 SMO1
 PID: DH3816
 STATE/COUNTY: LA/ST. CHARLES PARISH
 USGS QUAD: LULING (1992)
 NAD 83 (2007): 29°55'01.64"(N) 90°18'58.55"(W) ADJUSTED
 NAVD 88: 1.74 (METERS) 5.70 (FEET)
 GPS OBS: 2006.81
 RETRIEVAL DATE: DECEMBER 8, 2010
 BEARINGS SHOWN HEREON ARE GRID
 BEARINGS BASED ON THE LOUISIANA STATE
 PLANE COORDINATE SYSTEM SOUTH ZONE
 NAD 83 (1992).

I CERTIFY THAT THIS PLAT REPRESENTS AN ACTUAL ROUTE SURVEY MADE BY ME, OR BY THOSE UNDER MY DIRECTION AND COMPLIES WITH THE REQUIREMENTS OF LOUISIANA'S "STANDARDS OF PRACTICE FOR BOUNDARY SURVEYS" FOR A CLASS D ROUTE SURVEY SPECIFICALLY CHAPTER 2909 - ROUTE SURVEY.

RESIDUAL ACREAGE NOTE
 RESIDUAL ACREAGE'S SHOWN ARE CALCULATED FOR INFORMATION PURPOSES ONLY.
 THE RESIDUAL ACREAGE'S ARE SUBJECT TO REVIEW AND VERIFICATION BY TITLE AND SURVEY.

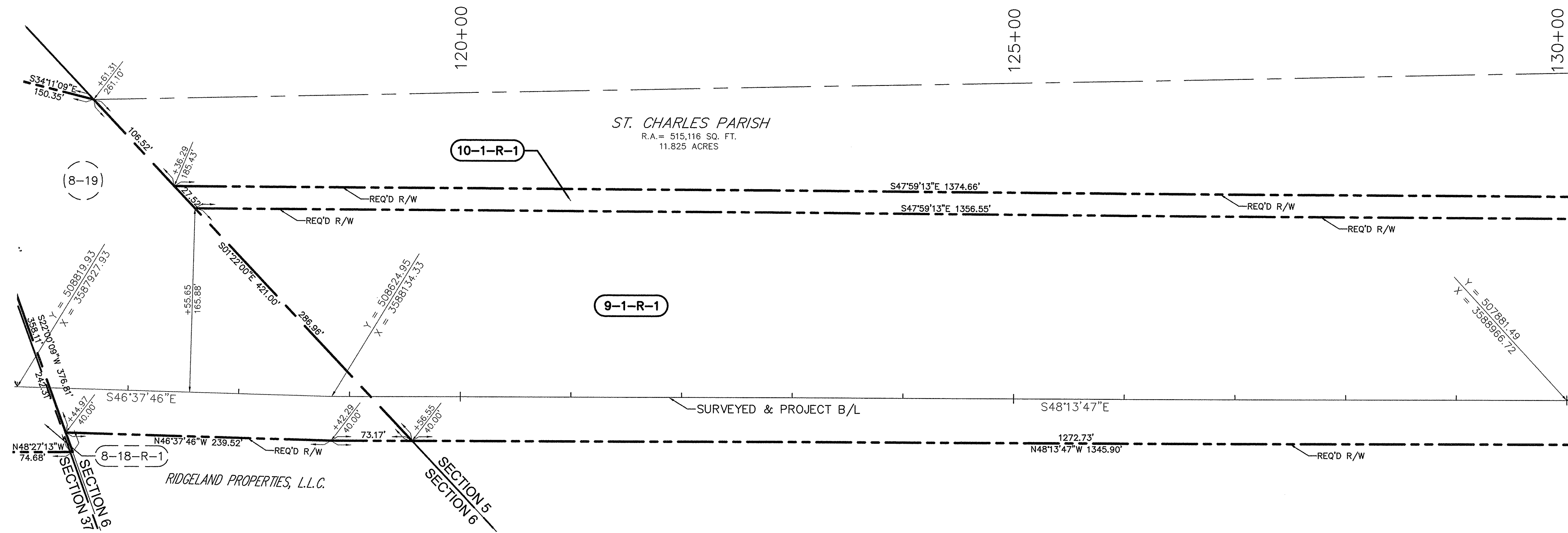
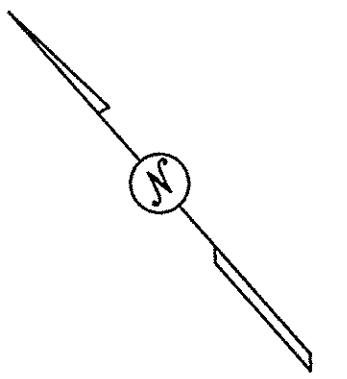
PARCEL	OWNER	ACQUISITION	AREA	ESTATE TYPE
8-19	RIDGELAND PROPERTIES, L.L.C.	C.O.B. 499 PG. 718 ENTRY NO. 196872	1,599 AC.	PERPETUAL LEVEE & CHANNEL EASEMENT
8-18-R-1	ST. CHARLES PARISH	C.O.B. 551 PG. 471 ENTRY NO. 231229	1,218 AC.	PERPETUAL LEVEE & CHANNEL EASEMENT
8-17	ST. CHARLES PARISH	C.O.B. 551 PG. 471 ENTRY NO. 231229	0,247 AC.	PERPETUAL LEVEE & CHANNEL EASEMENT
8-16	ST. CHARLES PARISH	C.O.B. 553 PG. 303 ENTRY NO. 232383	0,094 AC.	PERPETUAL LEVEE & CHANNEL EASEMENT
8-15-A-6	HARNEY HOOPER & GERALDINE VANNOY	C.O.B. 447 PG. 178 ENTRY NO. 162815	0,211 AC.	PERPETUAL LEVEE & CHANNEL EASEMENT
8-15	HARNEY HOOPER & GERALDINE VANNOY	C.O.B. 447 PG. 178 ENTRY NO. 162815	2,119 AC.	PERPETUAL LEVEE & CHANNEL EASEMENT
8-14	DELETED	DELETED	DELETED	DELETED
8-13-A-5	HARNEY HOOPER & GERALDINE VANNOY	C.O.B. 447 PG. 178 ENTRY NO. 162815	0,125 AC.	PERPETUAL LEVEE & CHANNEL EASEMENT
8-13	HARNEY HOOPER & GERALDINE VANNOY	C.O.B. 447 PG. 178 ENTRY NO. 162815	0,426 AC.	PERPETUAL LEVEE & CHANNEL EASEMENT
8-12-A-4	HARNEY HOOPER & GERALDINE VANNOY	C.O.B. 447 PG. 178 ENTRY NO. 162815	0,026 AC.	PERPETUAL LEVEE & CHANNEL EASEMENT
8-12	HARNEY HOOPER & GERALDINE VANNOY	C.O.B. 447 PG. 178 ENTRY NO. 162815	0,399 AC.	PERPETUAL LEVEE & CHANNEL EASEMENT
8-11	HOOPER & VANNOY	C.O.B. 447 PG. 178 ENTRY NO. 162815	0,287 AC.	PERPETUAL LEVEE & CHANNEL EASEMENT
8-10	DELETED	DELETED	DELETED	DELETED
8-9	WAYNE S. LANDRY, ET UX	C.O.B. 368 PG. 745 ENTRY NO. 126696	0,205 AC.	PERPETUAL LEVEE & CHANNEL EASEMENT
8-8	ESTATE OF McCLENDON	C.O.B. 132 PG. 663 ENTRY NO. 42169	0,097 AC.	PERPETUAL LEVEE & CHANNEL EASEMENT
8-7	ESTATE OF McCLENDON	C.O.B. 132 PG. 663 ENTRY NO. 42169	0,077 AC.	PERPETUAL LEVEE & CHANNEL EASEMENT
8-6-A-3	ESTATE OF McCLENDON, HOOPER & VANNOY	C.O.B. 145 PG. 18 ENTRY NO. 45247	0,027 AC.	PERPETUAL LEVEE & CHANNEL EASEMENT
8-6	ESTATE OF McCLENDON, HOOPER & VANNOY	C.O.B. 145 PG. 18 ENTRY NO. 45247	0,262 AC.	PERPETUAL LEVEE & CHANNEL EASEMENT
8-5-A-2	RONALD J. PREVOST, ET UX	C.O.B. 368 PG. 749 ENTRY NO. 126697	0,055 AC.	PERPETUAL LEVEE & CHANNEL EASEMENT
8-5	RONALD J. PREVOST, ET UX	C.O.B. 368 PG. 749 ENTRY NO. 126697	0,278 AC.	PERPETUAL LEVEE & CHANNEL EASEMENT
8-4	ESTATE OF McCLENDON	C.O.B. 132 PG. 663 ENTRY NO. 42169	0,154 AC.	PERPETUAL LEVEE & CHANNEL EASEMENT
8-3	ESTATE OF McCLENDON	C.O.B. 132 PG. 663 ENTRY NO. 42169	0,224 AC.	PERPETUAL LEVEE & CHANNEL EASEMENT
8-2-A-1	ROBERTA SAVOIE LANDRY ET AL	C.O.B. 617 PG. 229 ENTRY NO. 278067	0,180 AC.	PERPETUAL LEVEE & CHANNEL EASEMENT
8-2	ROBERTA SAVOIE LANDRY ET AL	C.O.B. 617 PG. 229 ENTRY NO. 278067	0,722 AC.	PERPETUAL LEVEE & CHANNEL EASEMENT
8-1	ROBERTA SAVOIE LANDRY ET AL	C.O.B. 617 PG. 229 ENTRY NO. 278067	0,423 AC.	PERPETUAL LEVEE & CHANNEL EASEMENT



LAFORCHE BASIN LEVEE DISTRICT
 AND
 PARISH OF ST. CHARLES
 RIGHT OF WAY MAP
 WEST BANK HURRICANE PROTECTION LEVEE - PHASE III
 ELLINGTON
 ST. CHARLES PARISH, LOUISIANA
 STA. 10+00.00 TO 170+62.80

DATE: 04/17/2014 / 100%	SCALE: 1" = 50'	SHEET NO. 8
DRAWN BY: T.P.T.	COMPUTED BY: S.P.F.	
RSC DWG NO.: L1553_1790_RSC_ROW		

SOUTHEASTERN LAND DISTRICT
WEST OF THE MISSISSIPPI RIVER
T 14 S - R 21 E
SECTIONS 5, 6 & 37



ELEVATIONS OR COORDINATES BASED ON:
DESIGNATION: BA01 SM01
PID: DH3816
STATE/COUNTY: LA/ST. CHARLES PARISH
USGS QUAD: LULING (1992)
NAD 83 (2007): 29°55'01.64\"(N) 90°18'58.55\"(W) ADJUSTED
NAVD 88: 1.74 (METERS) 5.70 (FEET)
GPS OBS: 2006.81
RETRIEVAL DATE: DECEMBER 8, 2010

BEARINGS SHOWN HEREON ARE GRID
BEARINGS BASED ON THE LOUISIANA STATE
PLANE COORDINATE SYSTEM SOUTH ZONE
NAD 83 (1992).

LEGEND

- REQUIRED RIGHT OF WAY LINE
- PROPERTY LINE
- LOT LINE
- LIMITS OF CONSTRUCTION
- EXISTING RIGHT OF WAY LINE
- SECTION LINE
- DRAINAGE SERVITUDE

PARCEL	OWNER	ACQUISITION	AREA	ESTATE TYPE
10-1-R-1	ST. CHARLES PARISH	C.O.B. 428 PG. 446 ENTRY NO. 152969	2.026 AC.	PERPETUAL LEVEE & CHANNEL EASEMENT
9-1-R-1	RATHBORNE LAND COMPANY, L.L.C.	C.O.B. AA PG. 293 ENTRY NO. N/A	23.506 AC.	PERPETUAL LEVEE & CHANNEL EASEMENT

I CERTIFY THAT THIS PLAT REPRESENTS AN ACTUAL ROUTE SURVEY MADE BY ME, OR BY THOSE UNDER MY DIRECTION AND COMPLIES WITH THE REQUIREMENTS OF LOUISIANA'S "STANDARDS OF PRACTICE FOR BOUNDARY SURVEYS" FOR A CLASS D ROUTE SURVEY SPECIFICALLY CHAPTER 2909 - ROUTE SURVEY.

RESIDUAL ACREAGE NOTE
RESIDUAL ACREAGE'S SHOWN ARE CALCULATED FOR INFORMATION PURPOSES ONLY.
THE RESIDUAL ACREAGE'S ARE SUBJECT TO REVIEW AND VERIFICATION BY TITLE AND SURVEY.

DATE	DESCRIPTION	BY
10/16/14	REVISED PARCEL 8-18-R-1, 9-1-R-1 & 10-1-R-1	TPT
	REVISIONS	

LAFOURCHE BASIN LEVEE DISTRICT
AND
PARISH OF ST. CHARLES

RIGHT OF WAY MAP
WEST BANK HURRICANE PROTECTION LEVEE - PHASE III
ELLINGTON
ST. CHARLES PARISH, LOUISIANA
STA. 10+00.00 TO 170+62.80

RIVERLANDS SURVEYING COMPANY
608 HEMLOCK STREET
LAFAYETTE, LA 70508
1-800-248-6982
800-662-6366

STEPHEN P. FLYNN, P.L.S.
LA ST. REG. NO. 4668

DATE: 04/17/2014 / 100%
DRAWN BY: T.P.T.

SCALE: 1" = 50'
COMPUTED BY: S.P.F.

SHEET NO. 9

S:\Land Projects R2\dwgs\L1553_1790_RSC_ROW_15-2014.dwg 10/16/2014 1:55:22 PM CDT