

## CERTIFICATE OF SUBSTANTIAL COMPLETION

DATE OF ISSUANCE December 18, 2015

OWNER St. Charles Parish

CONTRACTOR Sealevel Construction, Inc.

Contract: Pump Station Improvements

Project: Randolph Pump Station Improvements (Re-Advertisement)

OWNER's Contract No. P120801 ENGINEER's Project No. 11016

This Certificate of Substantial Completion applies to all Work under the Contract Documents or to the following specified parts thereof:

Randolph Pump Station Improvements including new mechanically cleaned bar screens, precast bridge, steel sheet pile walls, electrical controls and appurtenances.

To St. Charles Parish

OWNER

And To Sealevel Construction, Inc.

CONTRACTOR

The Work to which this Certificate applies has been inspected by authorized representatives of OWNER, CONTRACTOR and ENGINEER, and that Work is hereby declared to be substantially complete in accordance with the Contract Documents on

December 18, 2015  
DATE OF SUBSTANTIAL COMPLETION

A tentative list of items to be completed or corrected is attached hereto. This list may not be all-inclusive, and the failure to include an item in it does not alter the responsibility of CONTRACTOR to complete all the Work in accordance with the Contract Documents. The items in the tentative list shall be completed or corrected by CONTRACTOR within 30 days of the above date of Substantial Completion.

The responsibilities between OWNER and CONTRACTOR for security, operation, safety, maintenance, heat, utilities, insurance and warranties and guarantees shall be as follows:

OWNER: The OWNER, St. Charles Parish, accepts responsibility for security, operation, safety, maintenance, and utilities for the Randolph Pump Station Improvements including the new mechanically cleaned bar screens.

CONTRACTOR: The CONTRACTOR, Sealevel Construction, Inc., accepts responsibility for insurance, warranties, and guarantees in accordance with the Specifications Section 00700 STANDARD GENERAL CONDITIONS OF THE CONSTRUCTION CONTRACT.

The following documents are attached to and made a part of this Certificate:

**See Attached Punch List & Electrical Engineer's Field Report**

This certificate does not constitute an acceptance of Work not in accordance with the Contract Documents nor is it a release of CONTRACTOR's obligation to complete the Work in accordance with the Contract Documents. **Submit 6 (six) original documents signed and dated by the Engineer and Contractor to Dept of Public Works, 100 River Oaks Dr., Destrehan, La 70047 for processing.**

Executed by ENGINEER on January 4, 2016  
Date

Professional Engineering Consultants Corporation  
ENGINEER

By: [Signature] John Shires  
(Authorized Signature)

CONTRACTOR accepts this Certificate of Substantial Completion on January 5, 2016  
Date

Sealevel Construction, Inc.  
CONTRACTOR

By: [Signature]  
(Authorized Signature)

OWNER accepts this Certificate of Substantial Completion on 1/14/16  
Date

Parish President  
OWNER

By: [Signature]  
(Authorized Signature)

RECORDED IN THE ST. CHARLES PARISH  
CLERK OF COURT OFFICE

ON 1/14/16

AS ENTRY NO. 411969

IN MORTGAGE/CONVEYANCE BOOK  
NO. 1650 FOLIO 586

12-29-15

RANDOLPH PUMP STATION IMPROVEMENTS - PUNCH LIST

Completed

1. ~~Clean/muck out behind coffer dam and pull pilings.~~
2. ~~Place all stone rip-rap.~~
3. ~~Cold-Tar epoxy all spots and tops of steel sheet piles.~~
4. ~~Cold-Tar epoxy sheet piles that extend above ground level.~~
5. ~~Cold-Tar beams that are exposed.~~
6. ~~Cold-Tar epoxy all torch cut areas on beams and sheet piles.~~
7. ~~Cut geo-textile cloth off sheet piles down to ground level.~~
8. ~~Remove loose tree limbs hanging in tree branches.~~
9. ~~Clean up scrub brush that is piled up in the wooded area.~~
10. ~~Fine grade all areas that were cleared, till and sow winter rye and hulled Bermuda seed.~~
11. ~~Fill and compact all areas around new screen construction area that are too low.~~
12. ~~Need more gravel/stone compact on entry road and up to ramp at Waskey deck.~~
13. ~~Clean up Waskey deck.~~

Completed

14. Install all bolts on W14 screen/rake support beam and torque the bolts.
15. Have Entergy to pull wire, power and communications wire through conduit to camp site and terminate. *St. Charles Parish to call Entergy*

Completed

16. ~~Touch up all galvanized areas on new SSL screens.~~
17. ~~Re-Run aluminum conduit to the ground and across web of beam and clamp in place.~~
18. ~~Refill and pack trench dug/excavated for power and communication conduit to camp.~~
19. ~~Clean up and remove all crane mats and other materials.~~
20. ~~Some fresh top soil and seed levee area used for construction.~~
21. ~~Pour/place concrete at designated areas that are formed up.~~

Completed

22. ~~Add stone and repack ramp to deck that has settled.~~
23. Install new fence and gates around pump station as per request.

Completed

24. ~~Clean up all areas both sides and end of pump station.~~
25. Labels for pump switch SSL.

Completed

26. ~~Remove construction sign and install sandbag sign.~~
27. Prepare copy of as-builts for parish records.
28. Receive and install stripper assembly for top of bar screens.

## Jane Lanier

---

**From:** John Shires <jshires@pecla.com>  
**Sent:** Tuesday, January 12, 2016 5:01 PM  
**To:** Greg Schultz  
**Cc:** Jane Lanier  
**Subject:** RE: Randolph Pump Station - Punch List  
**Attachments:** img20160112\_16540695.pdf

Greg, attached is the revised punch list. All items have been completed as of today, 1/12/16, except for items #15, #23, #25, #27 and #28. The value of the remaining work is \$8,600.00. I would like to touch base with you tomorrow morning to discuss a few more things.

If you have any questions or require additional information please let me know. Thanks, John

John Shires, P.E.  
[jshires@pecla.com](mailto:jshires@pecla.com)

Professional Engineering Consultants Corporation  
433 Metairie Road  
Suite 313  
Metairie, LA 70005  
Office 504-309-5360  
Cell 504-722-1035

**From:** Greg Schultz [<mailto:gschultz@stcharlesgov.net>]  
**Sent:** Tuesday, January 12, 2016 9:00 AM  
**To:** John Shires <jshires@pecla.com>  
**Cc:** Jane Lanier <jlanier@stcharlesgov.net>  
**Subject:** RE: Randolph Pump Station - Punch List

John, thanks. Can you provide a revised punch list page striking through those items completed and an estimated cost for the remaining items to be completed. pdf is fine and we will replace the list in the documents and process it for signature.

Greg

**From:** John Shires [<mailto:jshires@pecla.com>]  
**Sent:** Monday, January 11, 2016 4:09 PM  
**To:** Greg Schultz <[gschultz@stcharlesgov.net](mailto:gschultz@stcharlesgov.net)>  
**Cc:** dickie simoneaux <[dickiesimoneaux@yahoo.com](mailto:dickiesimoneaux@yahoo.com)>; Dow Hillhouse <[dhillhouse@pecla.com](mailto:dhillhouse@pecla.com)>  
**Subject:** FW: Randolph Pump Station - Punch List

Greg, I spoke to Corbert with Sealevel Construction this afternoon and all items on the punch list are complete except for the following numbered items in his email listed below. I will be visiting the Randolph PS tomorrow morning to confirm this. If you have any questions please do not hesitate to contact me. Thanks, John

John Shires, P.E.  
[jshires@pecla.com](mailto:jshires@pecla.com)

Professional Engineering Consultants Corporation  
433 Metairie Road  
Suite 313  
Metairie, LA 70005  
Office 504-309-5360  
Cell 504-722-1035

**From:** Corbert Chaisson [<mailto:cchaisson@sealevelinc.com>]  
**Sent:** Monday, January 11, 2016 3:02 PM  
**To:** John Shires <[jshires@pecla.com](mailto:jshires@pecla.com)>; [jshires67@yahoo.com](mailto:jshires67@yahoo.com)  
**Subject:** Randolph Pump Station - Punch List

John,

Per our conversation today below are the outstanding items on the punch list:

- #15 (St Charles Parish responsibility – per Johnny Thompson)
- #23 install fence – Scheduled for next week
- #25 add labels- SSI responsibility
- #27 “As-Builts” - Sealevel Construction
- #28 Rake Strippers – SSI responsibility
- O & M Manuals –SSI responsibility

Please call if you have any questions.

**Corbert Chaisson**

**Sealevel Construction, Inc.**

1069 Hwy 3185, Thibodaux, La. 70301

t. 985.448.0970 c.985.665.3608 f.985.448.0922

[cchaisson@sealevelinc.com](mailto:cchaisson@sealevelinc.com)



**HUSEMAN**  
& Associates  
Consulting Engineers

## 2015-12-31 FIELD OBSERVATION REPORT

**DATE:** December 29, 2015

**TO:** PEC Corporation

**ATTN:** John Shires

**FROM:** Clark Shaw

**VIA:** E-Mail

**CC:**

**Project #:** 1306501

**Project Name:** Randolph Pump Station

**Client Project #:**

---

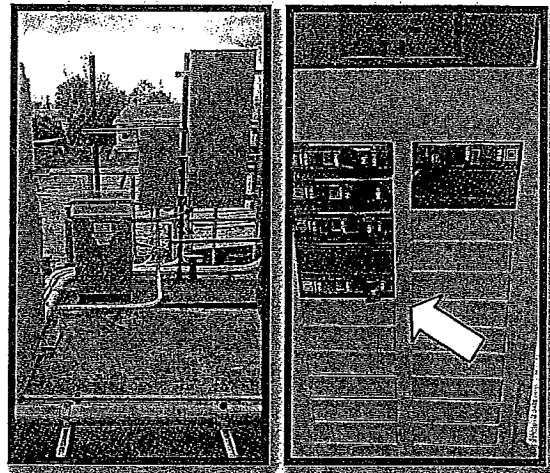
**Observation Date:** December 29, 2015 **Time:** 9:30am **Weather:** Overcast

**Outdoor Temp.:** 65°F

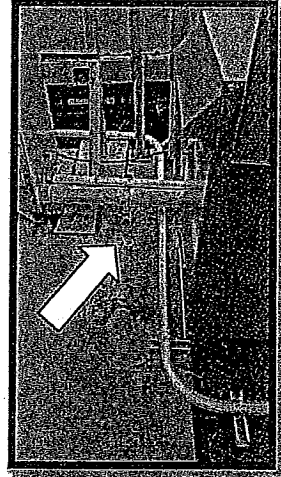
**Participants:** Clark Shaw (H&A)

Existing Panel LP at Platform. Rake  
Control Panel fed with 30ampere/2pole  
circuit breaker.

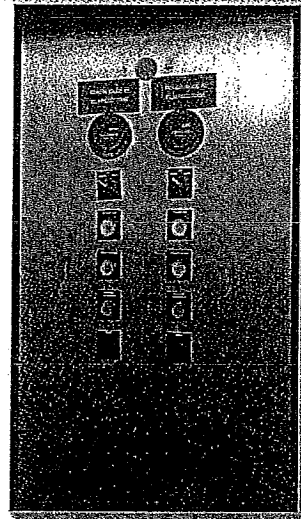
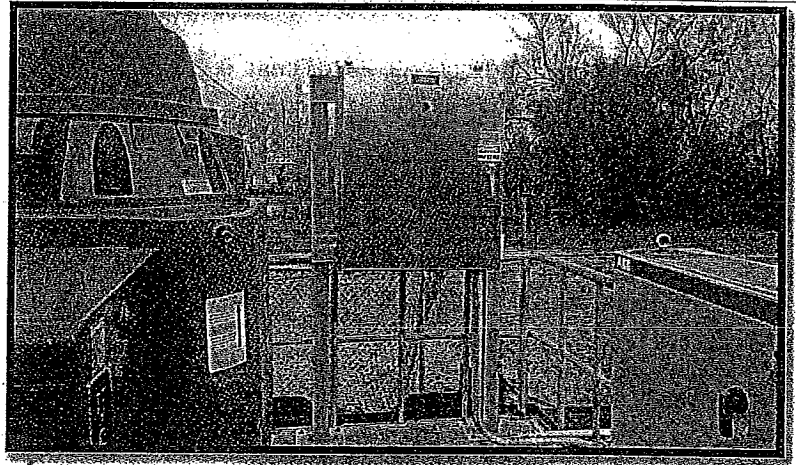
Remove 30a/2pole circuit breaker and  
replace with 30a/1 pole and 20a/1pole  
circuit breakers.



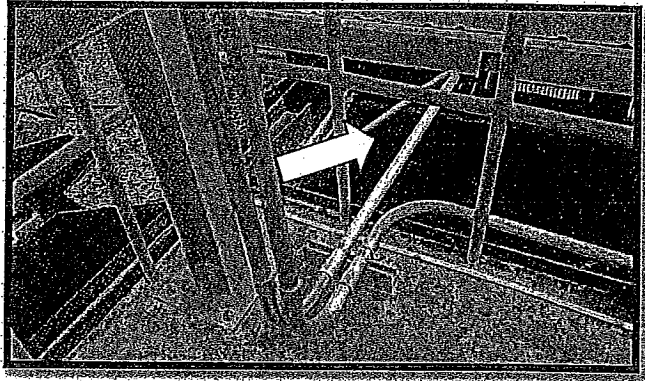
Conduit run from Panel LP to Rake Control Panel.



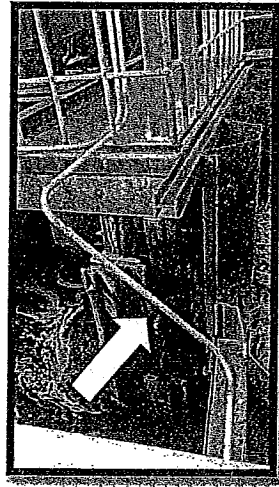
Rake Control Panel and interior controls.



1 1/4" aluminum conduit to Trash Rake pullbox exposed. Reroute adjacent to platform and provide supports.

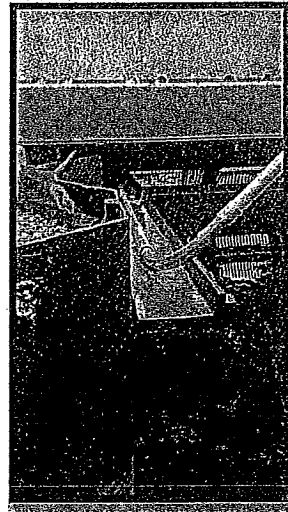


1 1/4" aluminum conduit from Rake Control Panel. Reroute adjacent to platform and provide supports.

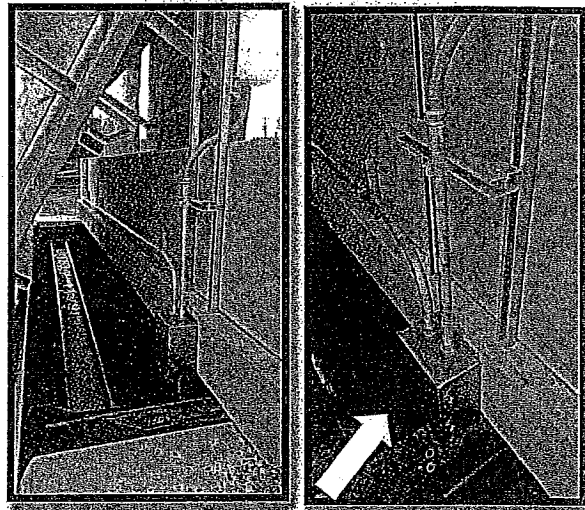




Conduit over to Trash Rake pullbox under concrete deck.



Rake pull box at rear wall below. Feeders to each Trash Rake PB enclosure.



Trash Rake PB Enclosure #1 and #2.



Trash Rake enclosures.



Trash Rake enclosure disconnect, typical.

