

St. Charles Parish Recording Page

Lance Marino
Clerk of Court
St. Charles Parish Courthouse
PO Box 424
Hahnville, LA 70057
(985) 783-6632

Received From :

ST. CHARLES PARISH - GENERAL FUND
PO BOX 302
HAHNVILLE, LA 70057

First VENDOR

ASHTON PLANTATION ESTATE LLC

First VENDEE

PARISH OF ST CHARLES

Index Type : CONVEYANCE

Entry Number : 430566

Type of Document : DEPOSIT

Book : 858

Page : 378

Recording Pages : 12

Recorded Information

I hereby certify that the attached document was filed for registry and recorded in the Clerk of Court's office for St. Charles Parish, Louisiana

Clerk of Court

On (Recorded Date) : 02/27/2018

At (Recorded Time) : 1:14:08PM



Doc ID - 007266690012

CLERK OF COURT
LANCE MARINO
Parish of St. Charles

I certify that this is a true copy of the attached document that was filed for registry and

Recorded 02/27/2018 at, 1:14:08

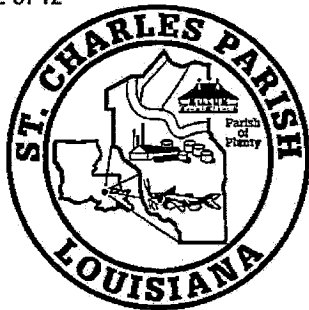
Recorded in Book 858 Page 378

File Number 430566

Deputy Clerk



Return To : ST. CHARLES PARISH - GENERAL FUND
PO BOX 302
HAHNVILLE, LA 70057



ST. CHARLES PARISH

OFFICE OF THE COUNCIL SECRETARY

P.O. BOX 302 • HAHNVILLE, LOUISIANA 70057

(985) 783-5000 • Fax: (985) 783-2067

www.stcharlesparish-la.gov

February 27, 2018

Honorable Lance Marino
Clerk of Court
P. O. Box 424
Hahnville, LA 70057

Re: Ashton Plantation Subdivision, Phase I-B, Plat

Dear Sir:

Please file the attached Plat for Ashton Plantation Subdivision, Phase I-B, and reference it to the Act of Dedication of the same name recorded on May, 25, 2006 in COB 669 FOLIO 563 ENTRY 318666, Ordinance No. 06-5-18.

Sincerely,

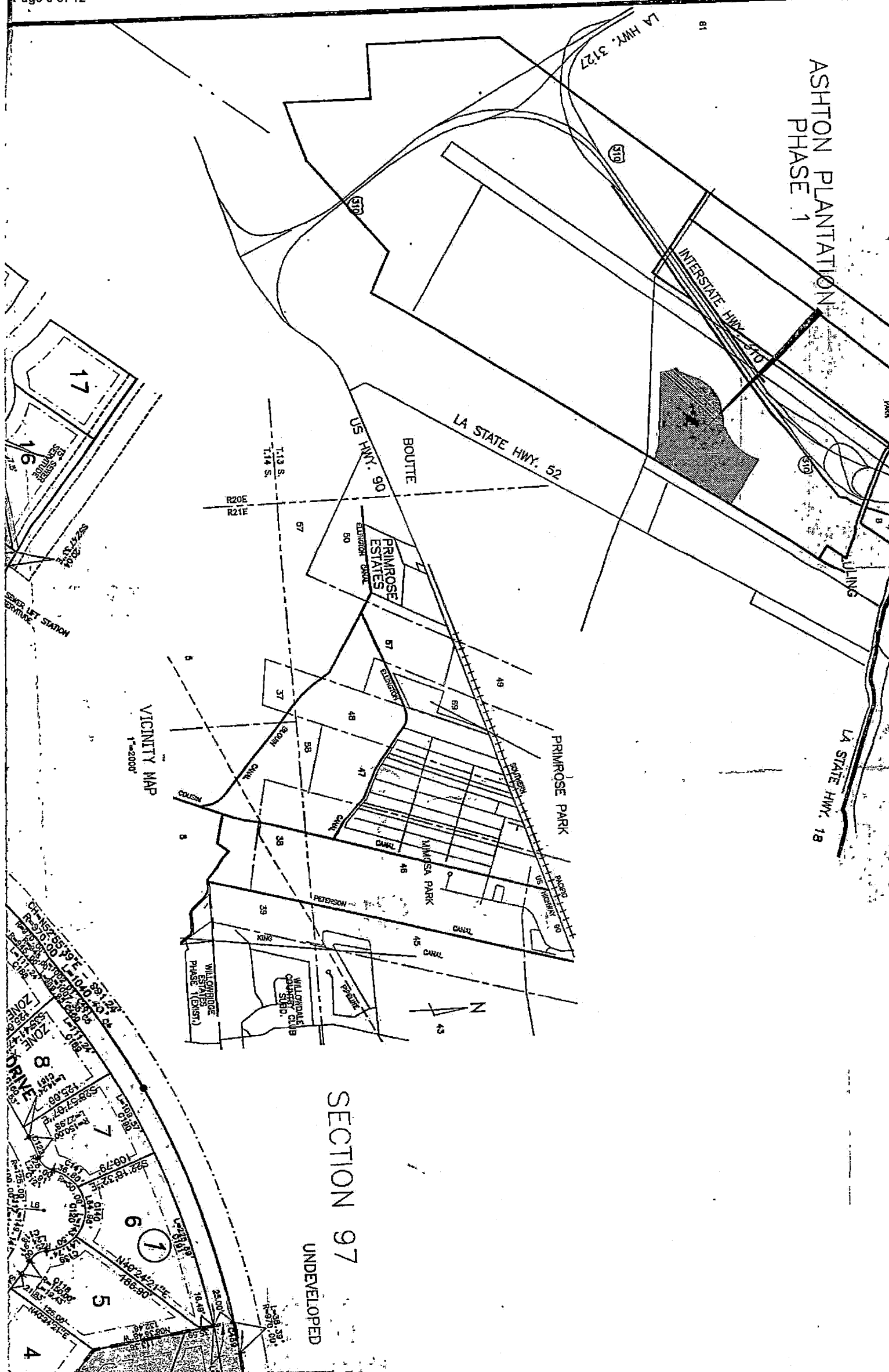
Valarie Berthelot

VALARIE BERTHELOT
INTERIM COUNCIL SECRETARY

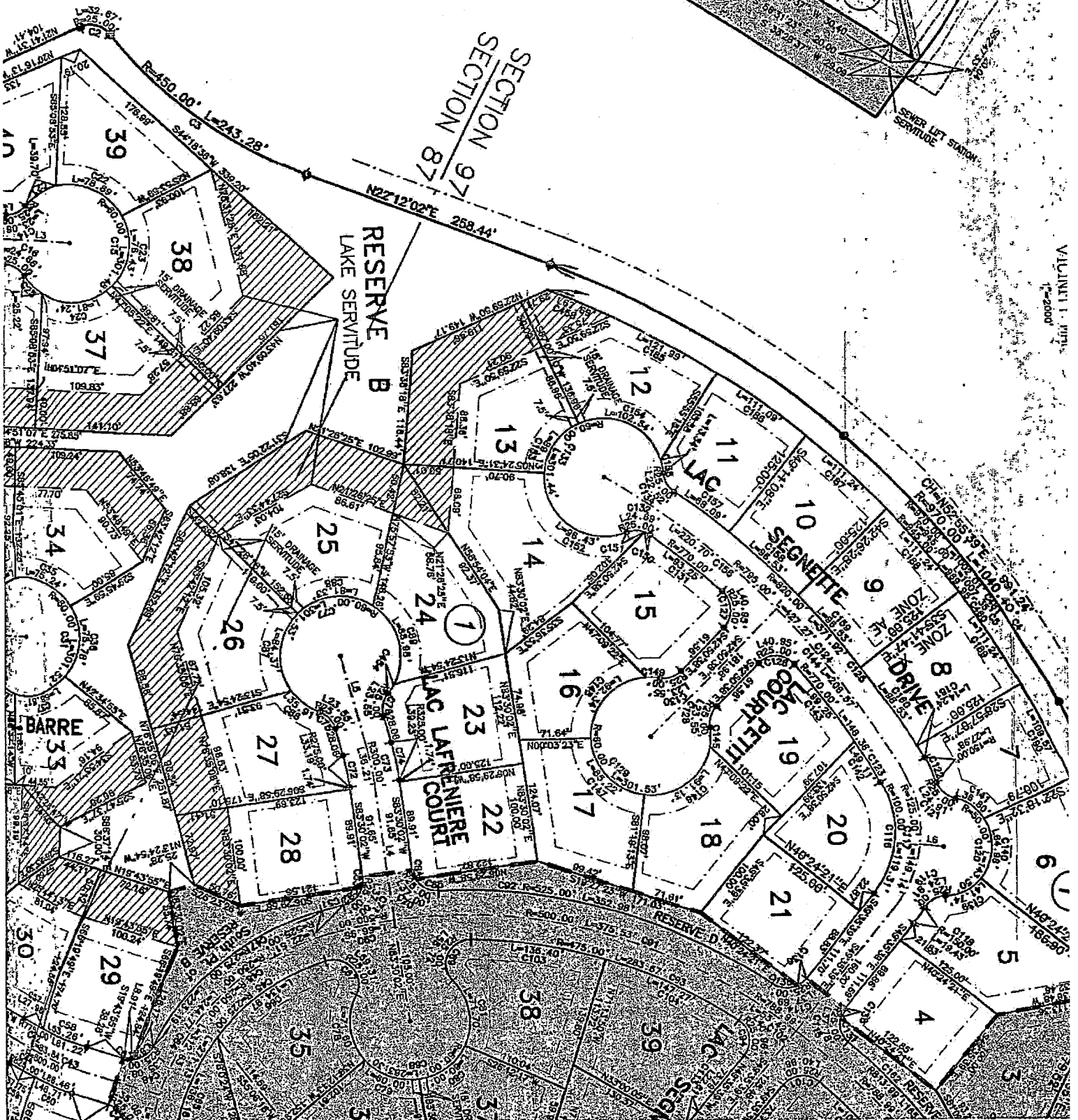
VB/ag

Attachment

ASHTON PLANTATION
PHASE 1



DETAIL:
INTERIM SEWER SERVITUDE
IN FAVOR OF PHASE 1-A

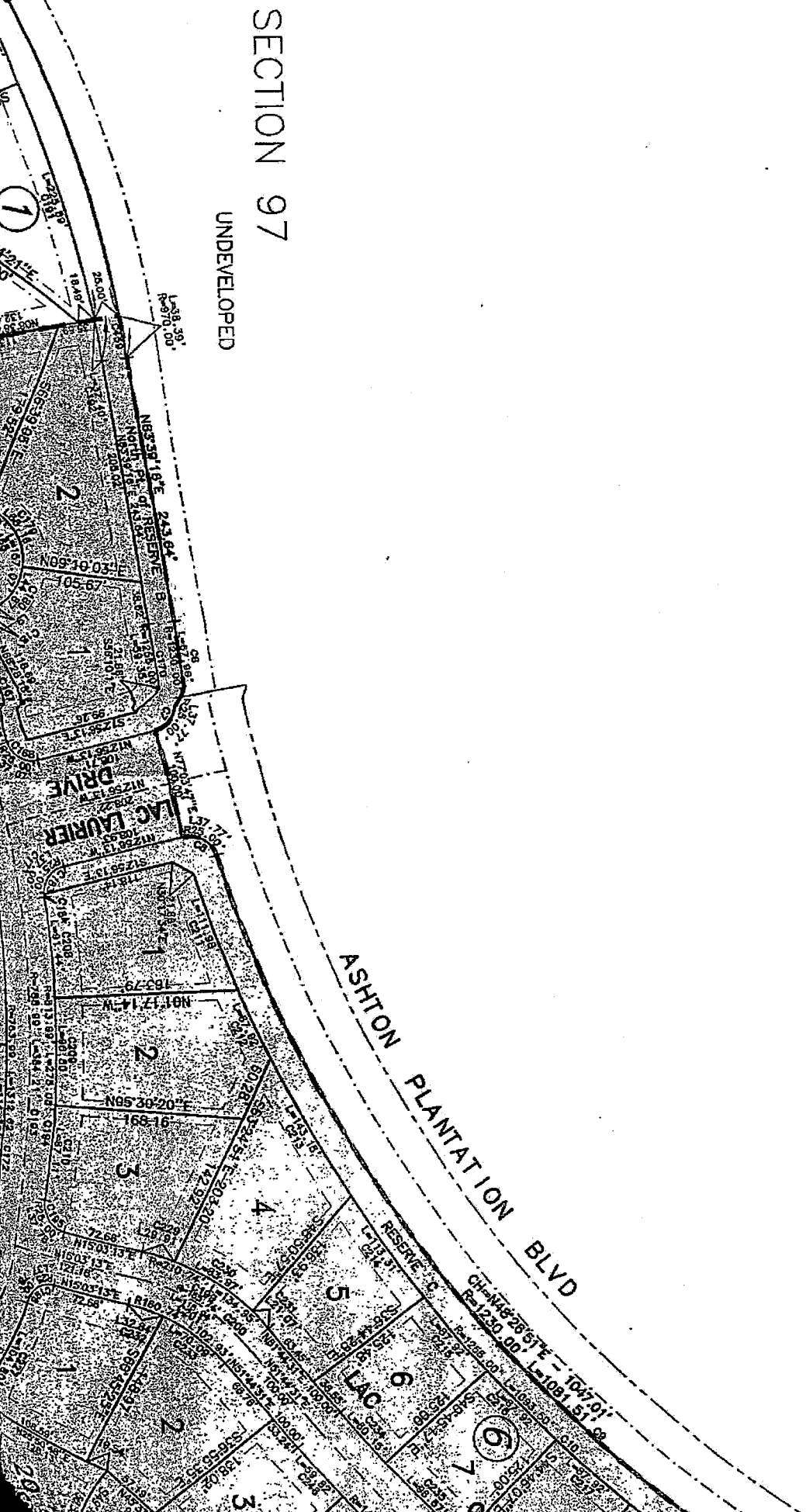
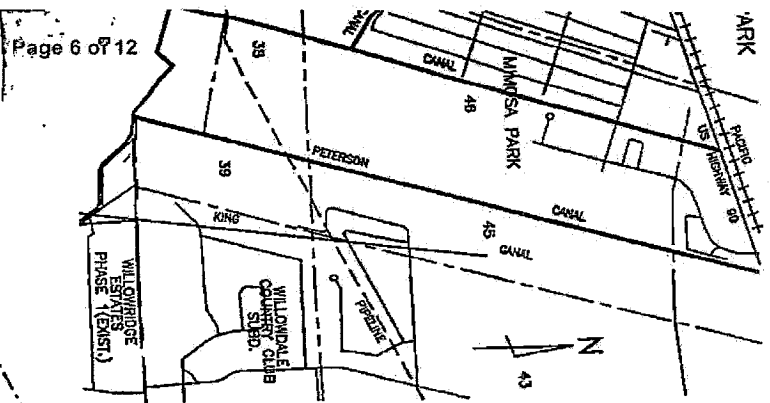


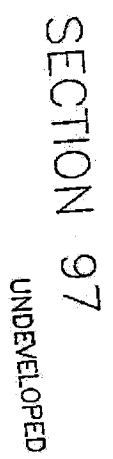
NOTE:
THE WATER
SHALL NOT
FEET NAVY
ASHTON P

ASHTON PLANTATION PHASE 1-B IN SECTIONS 87 & 97, T13S-R20E AND SECTION 8, T13S-R21E ST. CHARLES PARISH, LOUISIANA

SECTION 97

7. 18





WKS. NCS DISK Y200
D. 1988 DATA (X0D
29 DATA)
INCE WITH THE LOWLAND
OR PROPERTY BOUNDRY
; "C" SURVEY IN 1982.
UPON A BOUNDARY SURVEY
BY LAM & ASSOCIATES, INC.


"ST. CHARLES PARISH LAND USE REGULATIONS"
INCLUDING STRIPED, STANDARDS, SUPERSEDES
PRIVATE SUBDIVISION RECORDS, WHERE
PARISH REGULATIONS ARE MORE RESTRICTIVE.


NOTE: THE WATER SURFACE ELEVATION IN LAKE A AND LAKE B SHALL NOT BE ALTERED TO BE BELOW ELEVATION +1.5 FEET M.A.S.D. WITHOUT THE WRITTEN PERMISSION OF THE ASHTON PLANTATION HOME OWNERS ASSOCIATION, INC.

CERTIFIED TRUE & CORRECT AS PER
Date: 2/27/18
Lorraine Beckett
Interim SECRETARY
ST CHARLES PARISH COUNCIL

NO.	DATE			



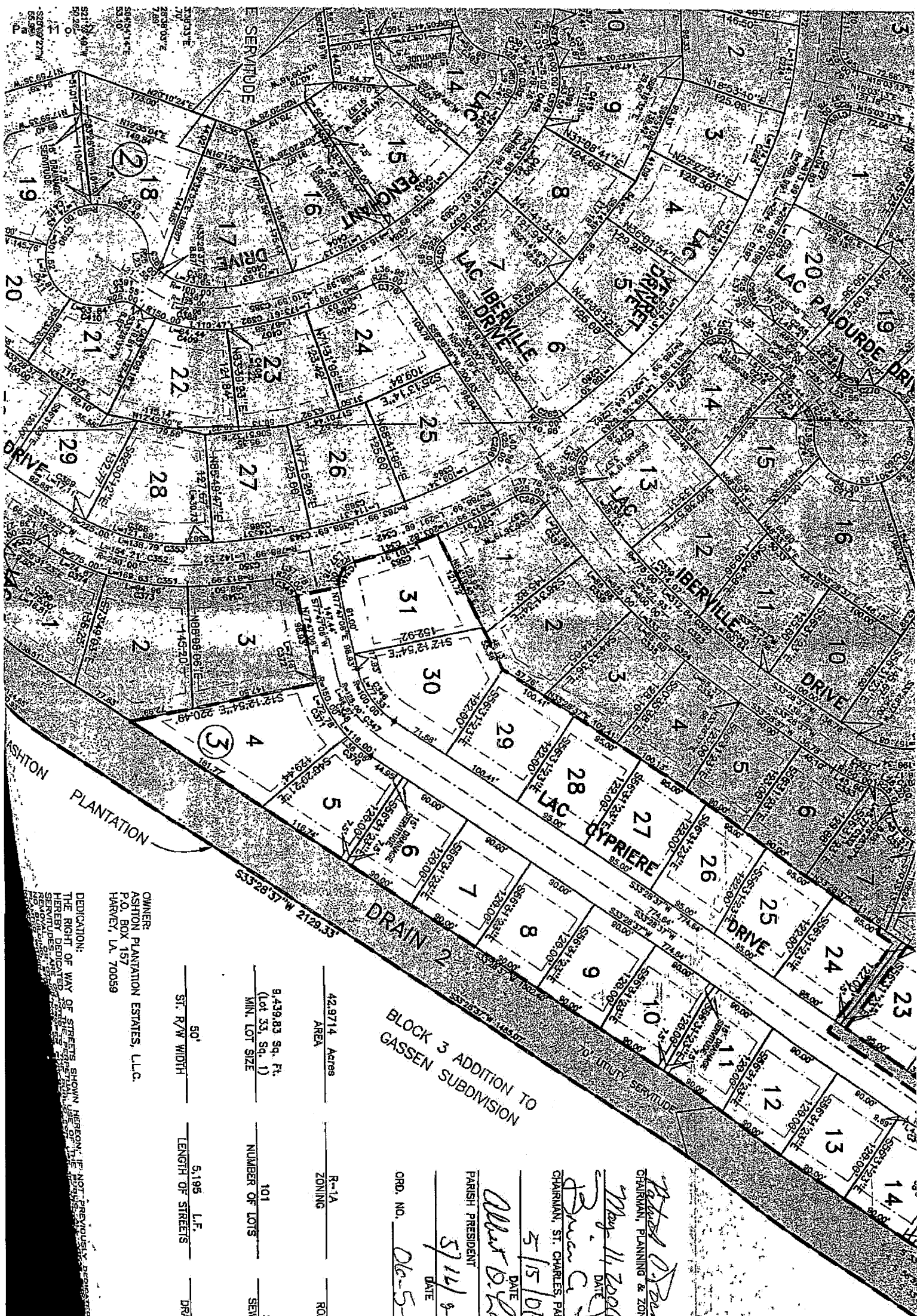
 LAKE SERVITUDES

 DENOTES SQUARE NUMBERS
15 DENOTES LOT NUMBERS

SECTION 8

UNDEVELOPED





BLOCK 3 ADDITION TO
GASSEN SUBDIVISION

Patricia D. Bode
CHAIRMAN, PLANNING & ZONING COMMISSION

May 11, 2006
DATE

Erica C. Tal
CHAIRMAN, ST. CHARLES PARISH COUNCIL

5/15/06
DATE

Oliver D. Bode
PARISH PRESIDENT

5/16/2006
DATE

ORD. NO. *06-5-18*

42.9714 Acres R-1A CONCRETE
AREA ZONING ROAD SURFACING

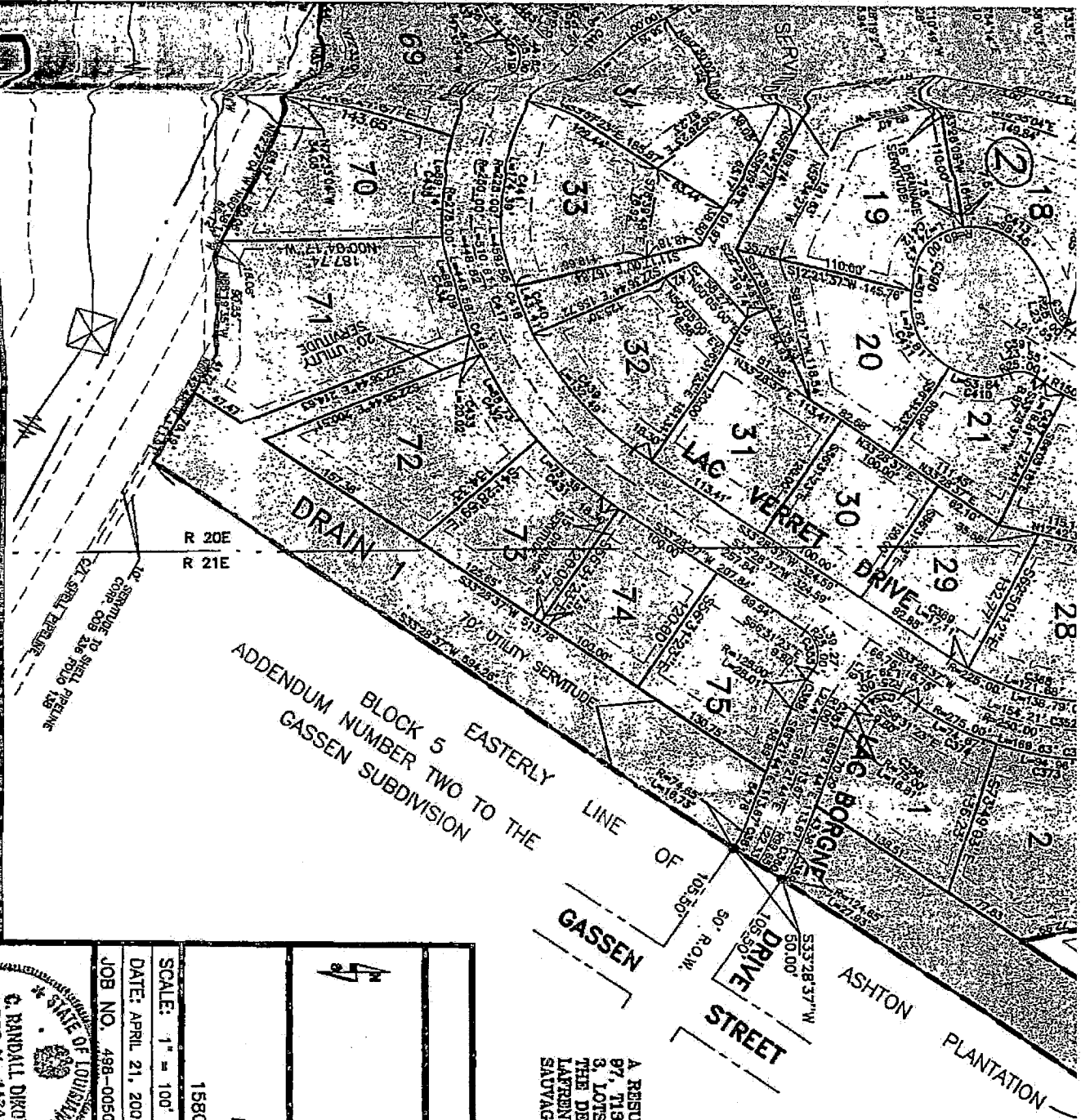
9,439.83 Sq. Ft. 101 SEE NOTE
(Lot 33, Sq. 1) NUMBER OF LOTS SEWERAGE SYSTEM

50' 5,195 L.F. SEE NOTE
ST. R/W WIDTH LENGTH OF STREETS DRAINAGE SYSTEM

OWNER:
ASHTON PLANTATION ESTATES, L.L.C.
P.O. BOX 157
HARVEY, LA. 70059

DEDICATION:

THE RIGHT OF WAY OF STREETS SHOWN HEREON IS NOT PREVIOUSLY DEDICATED TO THE PUBLIC AND IS HEREBY DEDICATED TO THE PUBLIC FOR THE USE OF THE PEOPLE OF THE STATE OF LOUISIANA.

[illegible]

OWNER:
ASHTON PLANTATION ESTATES, LLC.
P.O. BOX 157
HARVEY, LA. 70059

DEDICATION: THE RIGHT OF WAY OF SIDEWALKS SHOWN HEREON, IF NOT PREVIOUSLY DEDICATED, IS HEREBY DEDICATED TO THE PERPETUAL USE OF THE PUBLIC. ALL AREAS SHOWN AS SERVITUDES ARE GRANTED TO THE PUBLIC FOR USE OF UTILITIES, DRAINAGE, SEWERAGE REMOVAL, OR OTHER PROPER PURPOSE FOR THE GENERAL USE OF THE PUBLIC. NO BUILDING, STRUCTURE, OR FENCE SHALL BE CONSTRUCTED, NOR SHRUBBERY PLANTED WITHIN THE LIMITS OF ANY SERVITUDE SO AS TO PREVENT OR UNREASONABLY INTERFERE WITH ANY PURPOSE FOR WHICH THE SERVITUDE IS GRANTED. AREAS DESIGNATED AS RESERVE ARE NOT INCLUDED IN DEDICATION TO ST. CHARLES PARISH.

NO PERSON SHALL PROVIDE A METHOD OF SEWERAGE DISPOSAL, EXCEPT CONNECTION TO AN APPROVED SANITARY/SEWER SYSTEM, UNTIL THE METHOD OF TREATMENT AND DISPOSAL HAS BEEN APPROVED BY THE LOUISIANA DEPARTMENT OF HEALTH OR MODERN EQUIVALENT.

Gregory C. Uer
GREGORY C. UER, VICE PRESIDENT

A RESUBDIVISION OF A PORTION OF TRACT 11 OF ASHTON PLANTATION IN SECTIONS 87 & 87, T18S-R30E AND SECTION 8, T18S-R30E INTO SQUARE 1, LOTS 4-52 & 53-89; SQUARE 3, LOTS 4-21; SQUARE 4, LOTS 16-31; SQUARE 6, LOTS 10-16; P. OF RESERVE B, AND THE DEDICATION OF LAC SHERIDAN DRIVE, LAC GYPSERIE DRIVE, LAC FELICITY DRIVE, LAC LAFERRIERE COURT, LAC SENEQUE DRIVE, LAC PETT COURT, LAC BARRE COURT AND LAC SAUVAGE DRIVE, ST. CHARLES PARISH, LOUISIANA

FINAL PLAT

SHEET NO 1 OF 2

ASHTON PLANTATION, PHASE 1-B
IN SECTIONS 87, & 97, T13S-R20E
AND SECTION 8, T13S-R21E
ST. CHARLES PARISH, LOUISIANA

KREBS, LaSALLE, Lemieux CONSULTANTS, INC.
ENGINEERING • PLANNING • SURVEYING • HYDROLOGY • ENVIRONMENTAL
3013 27TH ST., METAIRIE, LA. 70002 (504)837-9470
1580 W. CAUSEWAY, APPROACH, SUITE 1 MADEDEVILLE, LA. 70471 (885)624-5125

SCALE: 1" = 100'
DATE: APRIL 21, 2006
JOB NO. 498-0050



DRAWN BY:	
FILE NO.	

APRIL 21, 2008

MEASURE 1A. THIS SUBDIVISION IS BASED UPON AN ACTUAL BOUNDARY SURVEY AND CONFORMS TO THE LAWS OF THE STATE OF LOUISIANA GOVERNING SURVEYING, PLATTING AND SUBDIVISION. OF THE PRELIMINARY PLATTING OF LAND, ALL PROPERTY CORNERS WILL BE STAKED PRIOR TO THE SALE OR TRANSFER OF LOTS.

KREBS, LASALLE, LAMIEUX CONSULTANTS, INC.

By: Charles E. Dion
C. RANDEL DION, P.L.S., REG. NO. 4474

