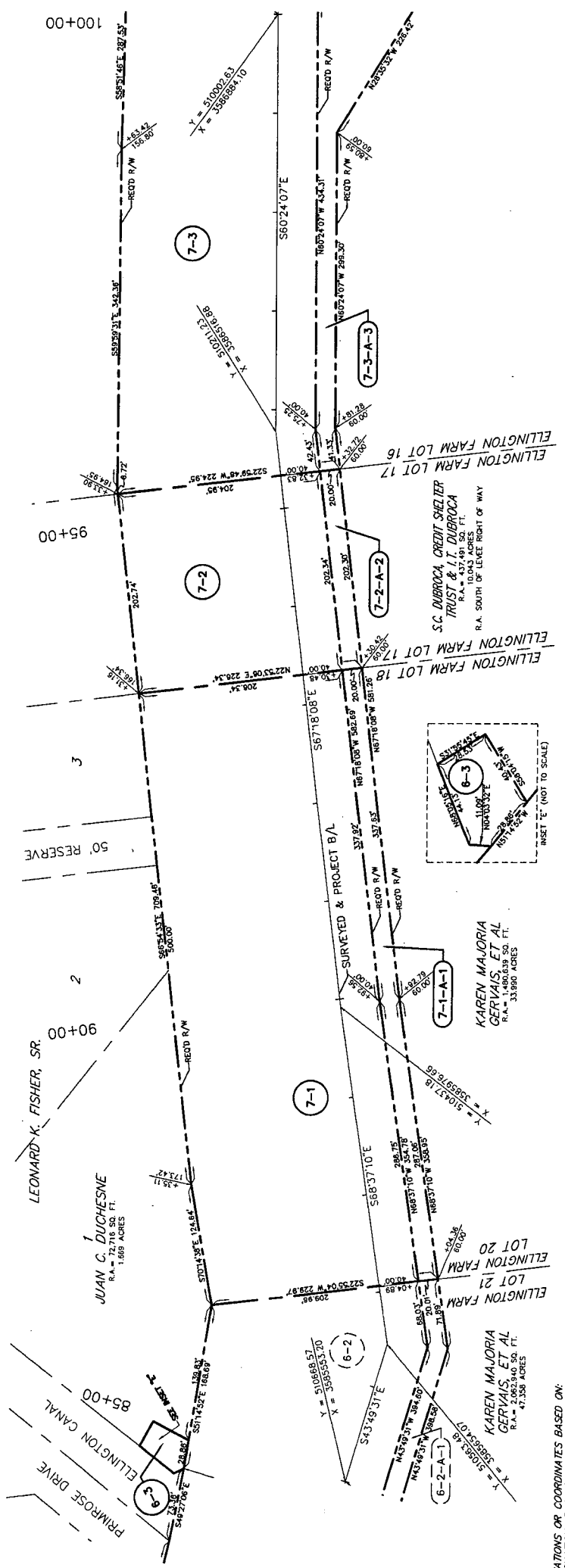


SOUTHEASTERN LAND DISTRICT
WEST OF THE MISSISSIPPI RIVER
T 13 S - R 21 E
SECTION 57



ELEVATIONS OR COORDINATES BASED ON:
DESIGNATION: BA01 SH01
PID: DH3816
STATE/COUNTY: LA/ST. CHARLES PARISH
USGS QUAD: LULING (1992)
NAD 83 (2007): 29°55'01.64\"N) 90°18'58.55\"W) ADJUSTED
NAD 83: 1.74 (METERS) 5.70 (FEET)
GPS OBS: 2006.81
RETRIEVAL DATE: DECEMBER 8, 2010
BEARINGS SHOWN HEREON ARE GRID
BEARINGS BASED ON THE LOUISIANA STATE
PLANE COORDINATE SYSTEM SOUTH ZONE
NAD 83 (1992).

LEGEND

- REQUIRED RIGHT OF WAY LINE
- PROPERTY LINE
- LOT LINE
- LIMITS OF CONSTRUCTION
- EXISTING RIGHT OF WAY LINE
- SECTION LINE
- DRAINAGE SERVICE

PARCEL	OWNER	ACQUISITION	AREA	ESTATE TYPE
7-3-A-3	RIDGELAND PROPERTIES, L.L.C.	C.O.B. 499 PG. 718 ENTRY NO. 196872	0.887 AC.	PERPETUAL LEASE & CHANNEL EASEMENT
7-3	RIDGELAND PROPERTIES, L.L.C.	C.O.B. 499 PG. 718 ENTRY NO. 196872	3.018 AC.	PERPETUAL LEASE & CHANNEL EASEMENT
7-2-A-2	S.C. DUBROCCA CREDIT SHELTER TRUST & J.T. DUBROCCA	C.O.B. 502 PG. 139 ENTRY NO. 196872	0.093 AC.	PERPETUAL LEASE & CHANNEL EASEMENT
7-2	S.C. DUBROCCA CREDIT SHELTER TRUST & J.T. DUBROCCA	C.O.B. 502 PG. 139 ENTRY NO. 196872	0.396 AC.	PERPETUAL LEASE & CHANNEL EASEMENT
7-1-A-1	KAREN MAJORIA GERVAIS, ET AL	C.O.B. 201 PG. 565 ENTRY NO. 38972	0.287 AC.	PERPETUAL LEASE & CHANNEL EASEMENT
7-1	KAREN MAJORIA GERVAIS, ET AL	C.O.B. 201 PG. 565 ENTRY NO. 38972	3.000 AC.	PERPETUAL LEASE & CHANNEL EASEMENT

I CERTIFY THAT THIS PLAN REPRESENTS AN ACTUAL ROUTE SURVEY MADE BY ME OR BY THOSE UNDER MY DIRECTION AND COMPLIES WITH THE REQUIREMENTS OF LOUISIANA'S "STANDARDS OF PRACTICE FOR BOUNDARY SURVEYS" FOR A CLASS D ROUTE SURVEY SPECIFICALLY CHAPTER 2009 - ROUTE SURVEY.

RESIDUAL ACREAGE NOTE
RESIDUAL ACREAGE'S SHOWN ARE CALCULATED FOR INFORMATION PURPOSES ONLY.
THE RESIDUAL ACREAGE'S ARE SUBJECT TO REVIEW AND VERIFICATION BY TITLE AND SURVEY.

DATE: 04/17/2014 / 10:03 AM
DRAWN BY: T.P.T.
COMPUTED BY: S.P.F.
SCALE: 1" = 50'
SHEET NO. 7

DATE: 04/17/2014 / 10:03 AM
DRAWN BY: T.P.T.
COMPUTED BY: S.P.F.
SCALE: 1" = 50'
SHEET NO. 7

DATE: 04/17/2014 / 10:03 AM
DRAWN BY: T.P.T.
COMPUTED BY: S.P.F.
SCALE: 1" = 50'
SHEET NO. 7

LAFOURCHE BASIN LEVEE DISTRICT
AND
PARISH OF ST. CHARLES
RIGHT OF WAY MAP
WEST BANK HURRICANE PROTECTION LEVEE - PHASE III
ELLINGTON
ST. CHARLES PARISH, LOUISIANA
STA. 10+00.00 TO 170+62.80

RESIDUAL ACREAGE NOTE
RESIDUAL ACREAGE'S SHOWN ARE CALCULATED FOR INFORMATION PURPOSES ONLY.
THE RESIDUAL ACREAGE'S ARE SUBJECT TO REVIEW AND VERIFICATION BY TITLE AND SURVEY.

DATE: 04/17/2014 / 10:03 AM
DRAWN BY: T.P.T.
COMPUTED BY: S.P.F.
SCALE: 1" = 50'
SHEET NO. 7

DATE	DESCRIPTION	BY	REVISIONS
10/16/14	ADDED PARCELS 6-2-A-1, 7-1-A-1, 7-2-A-2 & 7-3-A-3, DELETED SEWER SERVICE	TPT	

ASC DWG NO.: L1553_1790_RSC_ROW