



WELCOME



**Port Of
South Louisiana**
TRANSPORTATION CENTER OF THE AMERICAS

Commissioners



**D. Paul
Robichaux**
CHAIRMAN



**Judy
Songy**
VICE CHAIRWOMAN



**P. Joey
Murray III**
TREASURER



**Stanley
Bazile**
SECRETARY

**Patrick C.
Sellars**
VICE PRESIDENT



**Whitney
Hickerson**
VICE PRESIDENT



**Ryan
Burks**
VICE PRESIDENT

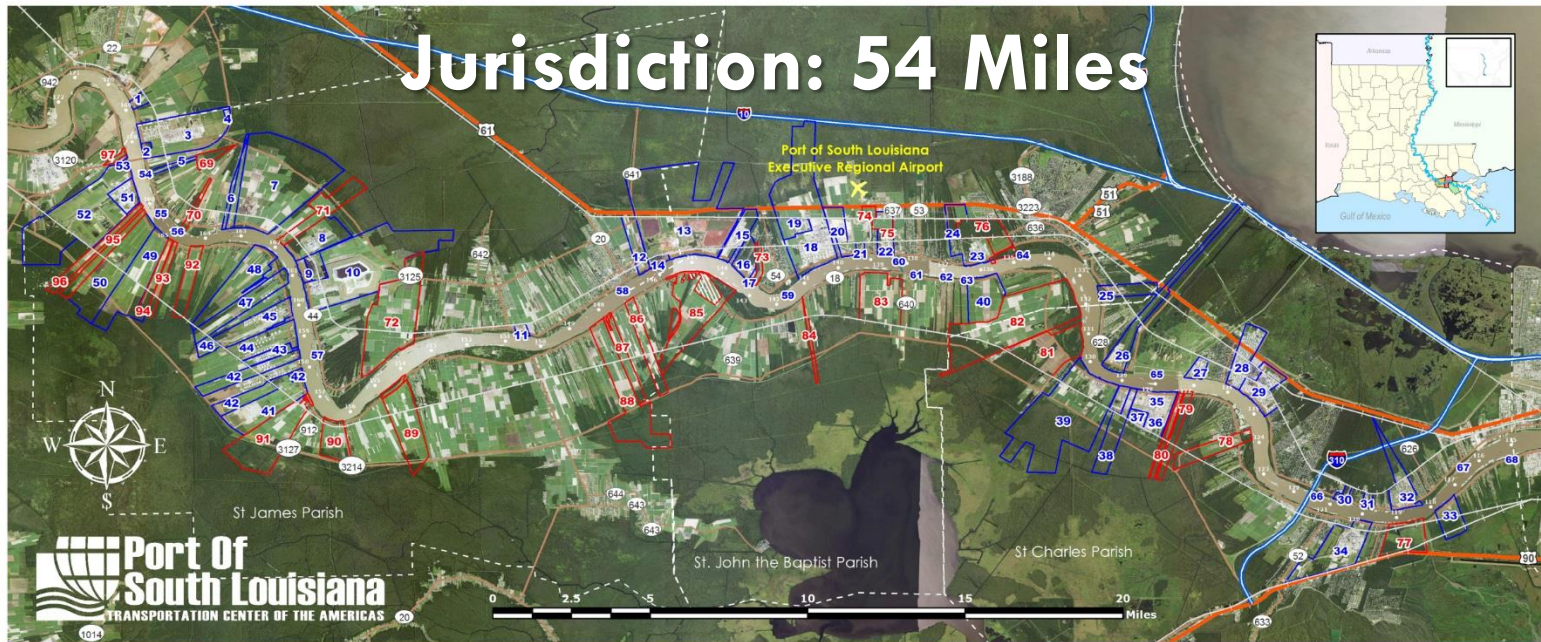


**Louis
Joseph**
VICE PRESIDENT



**Robbie
LeBlanc**
VICE PRESIDENT

Jurisdiction: 54 Miles



Pipelines

33 Crude
159 NG

68 Extg. Industry
7 grain elevators
4 refineries
10 oil storage

EXISTING INDUSTRY

1	Dupont	18	Marathon Petroleum Corporation	35	Dow - St. Charles	52	Mosaic - Faustina
2	Lafarge Corporation	19	Pinnacle Polymers	36	Arkema	53	Valero Asphalt
3	Shell - Convent	20	Cargill Terre Haute Elevator / Bulk Liquid	37	Galata Chemicals	54	Associated Terminals Sunshine Midstream Buoy
4	Air Products & Chemicals	21	ADM - Reserve	38	Occidental Chemical	55	Sunshine Anchorage
5	Yara North America	22	Globalplex Intermodal Terminal	39	Entergy / Waterford 1, 2, 3	56	Associated Terminals Midstream Buoy
6	Zen-Noh Grain	23	Denka Performance Elastomer LLC	40	EuroChem	57	Ryan Walsh Stevedoring Midstream Buoy
7	Nucor Steel Louisiana, LLC	24	DowDuPont	41	Yuhuang Chemical Company	58	Grandview Anchorage
8	Occidental Chemical	25	Bayou Steel Group	42	Plains All American	59	St. John Fleet Midstream Buoy
9	SunCoke Convent Marine Terminal	26	Entergy / Little Gypsy	43	Locap, Inc.	60	Reserve Midstream Buoy
10	Mosaic - Uncle Sam	27	W.R. Grace	44	Shell Pipeline	61	Reserve Anchorage
11	ADM - Paulina	28	Shell - Norco	45	NuStar	62	Capital Marine Tigerville Midstream Buoy
12	Louisiana Sugar Refinery	29	Valero - St. Charles	46	Syngas Energy	63	Gold Mine Fleet Midstream Buoy
13	Noranda Aluminum	30	ADM - Destrehan	47	Ergon / Sun Fuel Midstream	64	CGB Midstream Buoy
14	Rain Cil	31	Bunge North America	48	South Louisiana Methanol	65	Bonne Carre Anchorage
15	Pin Oak Terminals	32	International Matex Tank Terminals (MTT)	49	Gavilon Agriculture, LLC	66	ADM Midstream Buoy
16	Nalco/Colab	33	ADM - Ama	50	Formosa Plastics	67	Ama Anchorage
17	Evonik	34	Monsanto	51	Americas Styrenics	68	Kenner Bend Anchorage

HEAVY INDUSTRIAL SITES

69	Ancient Domain +/- 225 acres	84	Whiterose +/- 300 acres; 854' rf
70	Balot & Whitehall +/- 240 acres; 980' rf	85	Robert Brothers Farm +/- 1,582 acres; 8,448' rf
71	Shady Grove +/- 517 acres; 1,690' rf	86	Goodwill +/- 500 acres; 1,500' rf
72	Welham +/- 2,300 acres; 2,000' rf	87	Succeed +/- 450 acres; 1,530' rf
73	Hope +/- 283 acres; 1,500' rf	88	PSL St. James Property +/- 1,600 acres; 2,400' rf
74	Gudry Property +/- 84 acres	89	Bessie-K +/- 1,245 acres; 4,900' rf
75	PSL Globalplex (Certified Site) +/- 130 acres	90	Rich Bend +/- 500 acres; 1,300' rf
76	DuPont +/- 697 acres; 4,400' rf	91	Zeiringue / St. Emma +/- 1,464 acres; 2,254' rf
77	Davis Levert +/- 100 acres; 2,640' rf	92	Savannah +/- 444 acres; 1,954' rf
78	Home Place +/- 375 acres	93	Minnie & St. Louis +/- 235 acres; 650' rf
79	Pelican-Occidental +/- 489 acres; 1,373' rf	94	St. Alice +/- 321 acres; 670' rf
80	SolaPort +/- 99 acres; 263' rf	95	Elina (Lower) +/- 470 acres; 790' rf
81	St. Charles Intermodal Terminal +/- 1,165 acres; 3,601.67' rf	96	Elina (Upper) +/- 406 acres; 700' rf
82	Glendale Hymelia +/- 2,500 acres; 5,808' rf	97	Dunhill +/- 51 acres; 1,100' rf
83	Columbia +/- 900 acres; 3,300' rf		



**#12
LARGEST
TONNAGE
PORT
IN THE
WORLD**

ISL, USACE WCSC
2016



Port of South Louisiana is ranked as the #1

LARGEST TONNAGE PORT *IN THE* **WESTERN HEMISPHERE!**

258M short tons | 3,945 vessels | 54,921 barges (2019)

GRAIN
ELEVATORS

Zen-Noh Grain
Cargill
ADM | Destrehan
Bunge
ADM | Reserve
ADM | Ama
ADM | Paulina



**Port Of
South Louisiana**
TRANSPORTATION CENTER OF THE AMERICAS

Port of South Louisiana is ranked as the #1

GRAIN EXPORTER *IN THE UNITED STATES!*

7 grain elevators | Ships to >90 countries | 90.2M st

#3 in
Exports

Warehouse +
Distribution



Port of South Louisiana is ranked as the #1

FOREIGN TRADE ZONE IN THE U.S. FOR MERCHANDISE RCVD!

12 zones | \$60.4B received | 10,599 employed (2019)



PIPELINES

33 crude
159 NG



Port of South Louisiana is ranked as the #2

***ENERGY TRANSFER PORT* IN THE UNITED STATES!**
4 oil refineries | 10 crude oil storage terminals

Grain Facilities

GRAIN ELEVATORS (7) – 101.6M SHORT TONS

Zen-Noh Grain

Cargill

ADM – Destrehan

Bunge North American

ADM – Reserve

ADM – Ama

ADM – Paulina

Oil Refineries/Storage

OIL REFINERIES (4) – 1,399M BARRELS/DAY

Marathon Petroleum

Shell - Convent

Shell - Norco

Valero – St. Charles

OIL STORAGE (10) – 93.5M BARRELS

Marathon Petroleum

Shell - Convent

Shell - Norco

Valero – St. Charles

Ergon

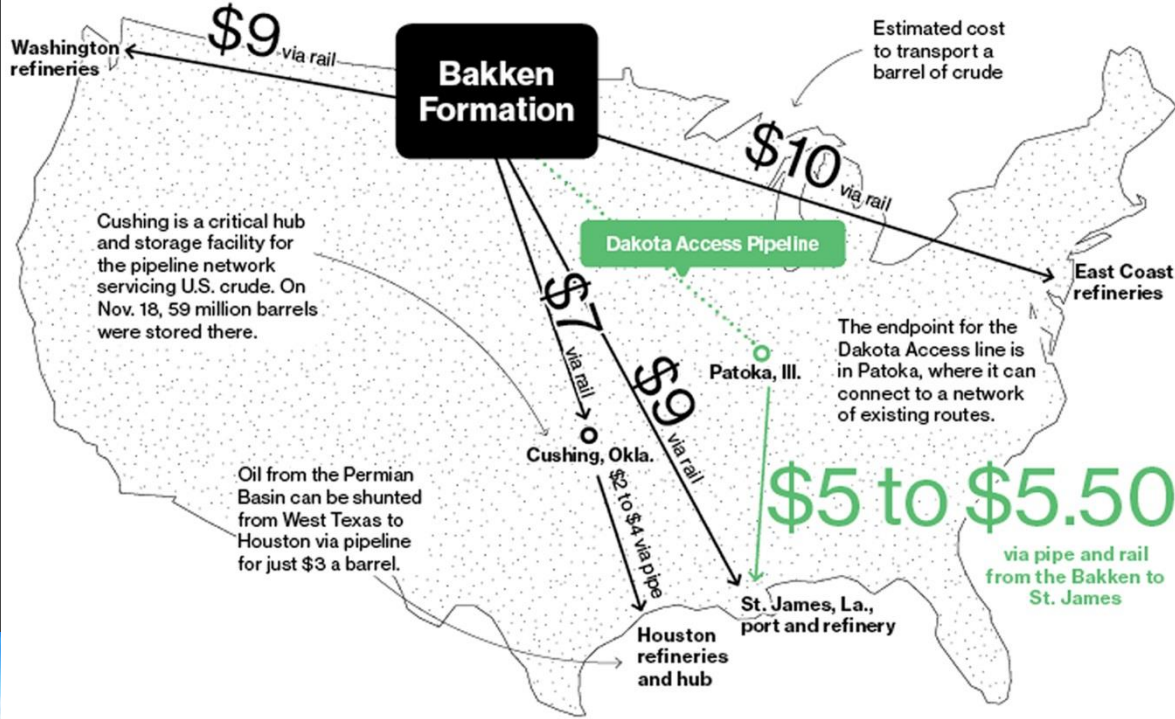
IMTT

LOCAP

NuStar

MPLX [Marathon]

Plains All American



Shipping crude from Bakken is expensive, according to Valero & Bloomberg Intelligence estimates...

Energy Transfer Pipelines

...DAKOTA ACCESS TO BAYOU BRIDGE would make it more economically viable





Energy Transfer Pipelines

BAYOU BRIDGE



Petrochemical, Chemical & Fertilizer Facilities

Air Products

Galata Chemicals

American Styrenics

Occidental Chemical

Rain CII

Denka

Monsanto

Air Liquide

Dow St. Charles

Nalco

Evonik

Mosaic

Pinnacle Polymers

Momentive

Largest Tonnage Port in the Western Hemisphere



OVER 258.6M STs VIA
3,945 vessels
54,921 barges

LARGEST GRAIN PORT
(OVER 50% OF ALL U.S. EXPORTS)
seven grain elevators



VALUE:
EXPORTS - OVER \$25.7B
IMPORTS - OVER \$25.9B

#2 ENERGY TRANSFER PORT
4 oil refineries &
10 crude storage terminals



OVER 40 LIQUID AND
DRY BULK TERMINALS

FTZ #124 RANKED 1ST
*12 zones
*\$60.4B in merchandise (2019)



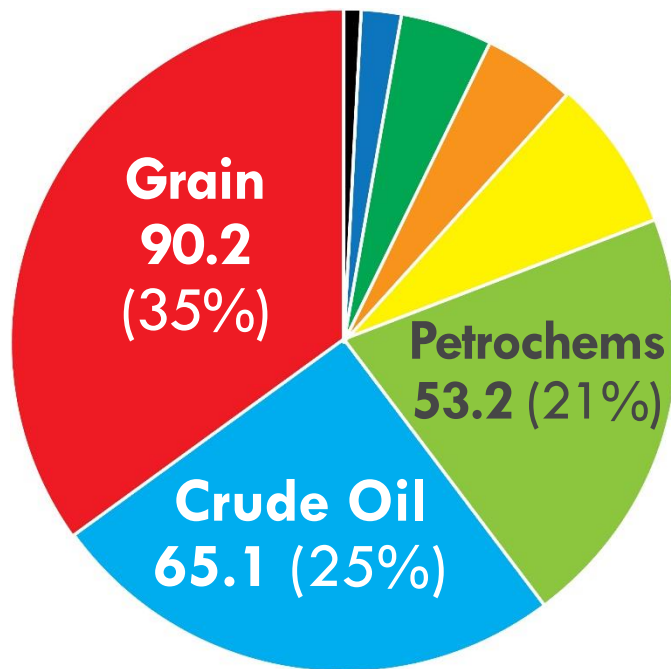
Commodities Breakdown

2019

258.7M
short tons

Vessels:
3,945

Barges:
54,921



■ Grain	Soybean	44.6	
	Maize	30.9	
	Animal Feed	9.5	
	Wheat	3.6	
	Sorghum + Rice	1.6	
■ Chemicals/Fertilizers	19.5	(8%)	
■ Ores/Phosphate Rock	11.8	(5%)	
■ Coal/Lignite/Coke	11.3	(4%)	
■ Steel Products	4.6	(2%)	
■ Other	2.9	(1%)	
	Concrete/Stone	1.07	
	Other	0.94	
	Edible Oils	0.81	
	Sugar/Molasses	0.05	

Port Tonnage

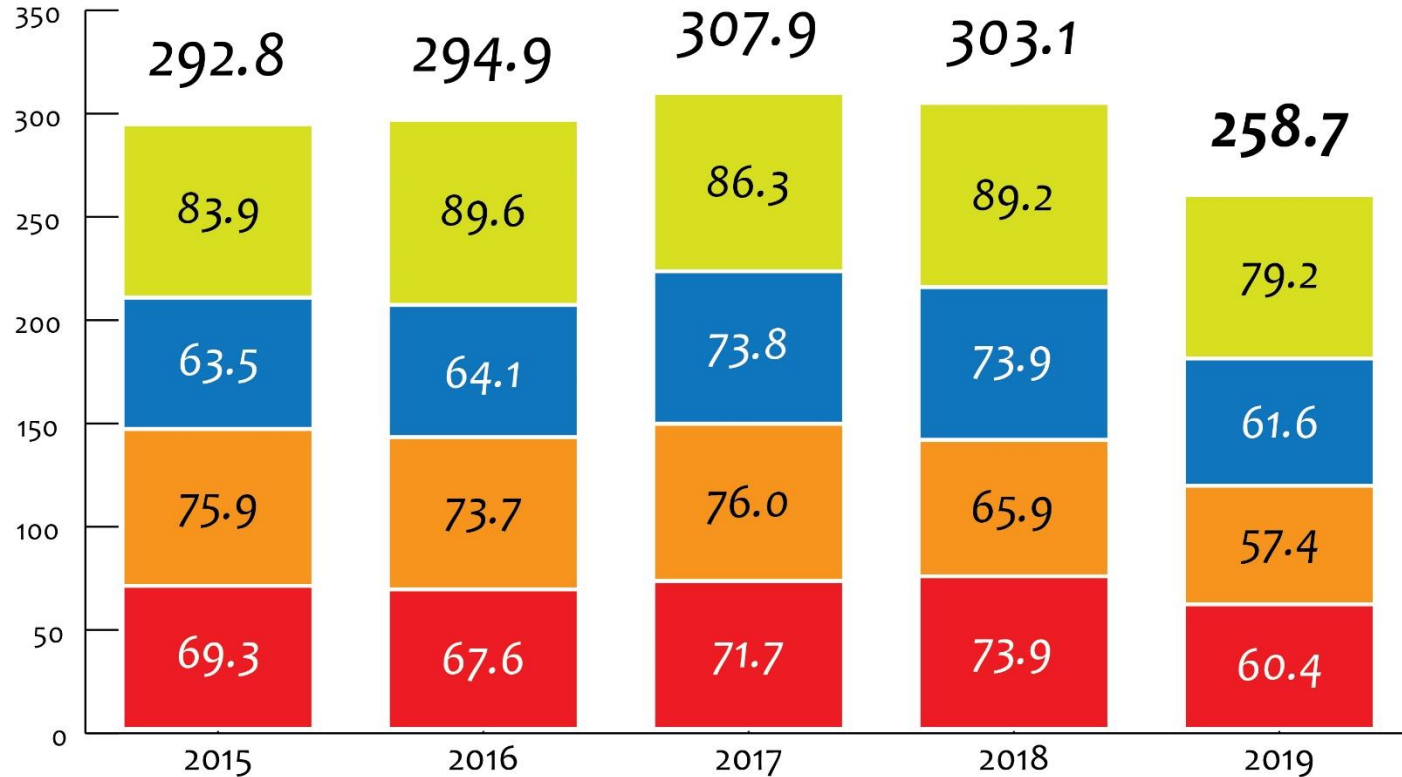
EXPORTS

IMPORTS

DOMESTIC SHIPPED

DOMESTIC RECEIVED

**TOTAL
TONNAGE**
*in million
short tons*



Top Trading Partners (2019)

EXPORTS



China – 6.2M st
grain (soybean)



Mexico – 4.6M st
grain (corn); petrochemicals



Japan – 3.8M st
grain (corn); crude



Colombia – 2.8M st
grain (corn); crude



Egypt – 2.4M st
grain (soybean); coal

IMPORTS

Jamaica – 3.3M st
ores/phosphates



Brazil – 2.4M st
steel; crude; misc. cargo



Peru – 1.4M st
ores/phosphates; petrochemicals



Canada – 1.1M st
steel; crude



United Kingdom – 1.1M st
crude



Access to over

**26 Million
people**

in 31 U.S. States

Alabama	Nebraska
Arkansas	New Mexico
Colorado	New York
Georgia	N. Carolina
Idaho	N. Dakota
Illinois	Ohio
Indiana	Oklahoma
Iowa	Pennsylvania
Kansas	S. Dakota
Kentucky	Tennessee
Louisiana	Texas
Michigan	Virginia
Minnesota	W. Virginia
Mississippi	Wisconsin
Missouri	Wyoming
Montana	





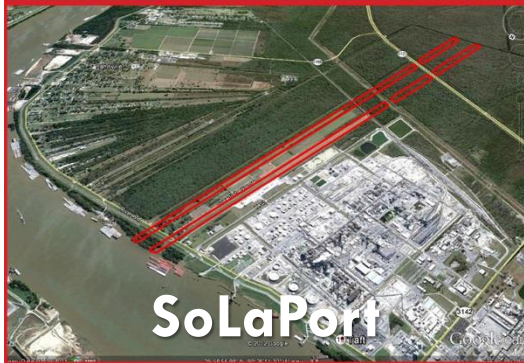
ADM | Reserve



KAPS



Plains All American



SoLaPort



MPLX



PSL St. James



Port-Owned Facilities

Including Globalplex's general cargo terminal and bulk cargo terminal, Port of South Louisiana owns 8 facilities

TENANTS

Evonik

NATCO

Food Service

Barton Mines

Baumer Foods

Associated

Terminals

LaFargeHolcim

ADM

CRC

Pinnacle Polymers



Globalplex Intermodal Terminal (335 Acres)

Jobs at
Globalplex =
315

- Bulk cargo dock; general cargo dock w/adjacent finger pier; over 716K sq.ft. covered storage; 177K sq.ft. open storage; 130-acre certified site
- Stevedoring Firm: Associated Terminals

Runway
5,100'x75'

Hangar
6,300 sq.ft.

FBO
Services



Port of South LA Executive Regional Airport

Jet-A & AvGas Fuel

FAA AWOS

Video Surveillance



2,000 SqFt.;
Built to withstand
150 mile-per-hour
winds



Outfitted w/state-
of-the-art comm &
surveillance
equipment



Linked to federal,
state, & local
emergency
response agencies



Marine Security Operations Center (MSOC)

Command/control center for emergency management;
Linked to MSOCs of all MS River deep-water ports



Priority List

Emergency & National Security Projects



MS River Shipping Channel Dredging, South LA

The MS River ship channel depth is not sufficient to accommodate the deep-draft vessels now transiting the expanded Panama Canal, hurting competitiveness. Congress authorized a 50-foot channel depth in 1985 but the work has never been funded.

Authority: Port of South Louisiana/USACE



Cost:
\$1 Billion
Jobs:
200 Direct



Engineering &
Permitting:
in progress

Funding:
seeking Federal

Economic Impact of the Port of South Louisiana

	REGIONAL	LOUISIANA
New Business Sales	\$ 14.4B	\$ 19.9B
Earnings	\$ 1.8B	\$ 4.4B
Employment	30,180 (6 in 10)	83,409 (1 in 25)
# Jobs at Globalplex = 315		
Tax Revenue	\$ 72.5M	\$ 310.5M
	Loren C. Scott & Associates, Inc., 2015	

Port Benefits



INDUSTRIAL REVENUE BOND FINANCING

Taxable and tax-exempt bonds to assist new industrial facilities

FOREIGN TRADE ZONE (FTZ) #124

Operator of the most active trade zone in America



PROFESSIONAL LOCATION ASSISTANCE

Includes the use of in-house GIS

MARITIME SECURITY AND FIRE PROTECTION

Round-the-clock emergency response division



Doing Business in Louisiana



**SILVER SHOVEL AWARD, JOB CREATION & BUSINESS INVESTMENT
IMPACT,** *Area Development Magazine (2018)*

#1 | LED FASTSTART® WORKFORCE TRAINING PROGRAM
Business Facilities Magazine

#2 | INFRASTRUCTURE INVESTMENT SUPPORTING ECON. GROWTH
Site Selection Magazine



#2 | STRONGEST ECONOMIC DEVELOPMENT RESULTS IN THE SOUTH
Southern Business & Development Magazine

TOP 10 | BEST STATES FOR BUSINESS
Site Selection Magazine & Area Development Magazine

Economic Development

	Parish	Capital Investment	# Direct Jobs	Avg Salary
Formosa TAIWAN <i>methanol</i>	St. James	\$ 9.4B	1,200	\$ 84.5K
Nucor Steel U.S.	St. James	\$ 3.4B	1,250	\$ 75K
South Louisiana Methanol NEW ZEALAND/SAUDI ARABIA	St. James	\$ 2.2B	75	\$ 71.4K

Economic Development

	Parish	Capital Investment	# Direct Jobs	Avg Salary
Yuhuang Chemical CHINA <i>methanol</i>	St. James	\$ 1.85B	400	\$ 85K
EuroChem RUSSIA <i>fertilizer</i>	St. John	\$ 1.5B	200	\$ 58K
Diamond Green Diesel U.S. (expansion) <i>diesel/alkylate</i>	St. Charles	\$ 1.1B	54	\$130K

Economic Development (cont'd)

	<i>Parish</i>	<i>Capital Investment</i>	<i># Direct Jobs</i>	<i>Avg Salary</i>
Monsanto <i>(expansion)</i> U.S.	St. Charles	\$ 975M	95	\$ 76K
Entergy Little Gypsy <i>(expansion)</i> U.S.	St. Charles	\$ 869M	27	
MPLX L.P. (former Pin Oak Terminals) U.S. <i>crude oil</i>	St. John	\$ 750M	80 - 100	\$ 63K

Economic Development (cont'd)

	<i>Parish</i>	<i>Capital Investment</i>	<i># Direct Jobs</i>	<i>Avg Salary</i>
NuStar U.S. <i>crude oil storage</i>	St. James	\$ 365M	32	\$98K
Syngas Energy MALAYSIA <i>methanol</i>	St. James	\$ 360M	86	\$ 78K
Linde U.S. <i>hydrogen</i>	St. James	\$ 250M	15	\$80K

Economic Development (cont'd)

	<i>Parish</i>	<i>Capital Investment</i>	<i># Direct Jobs</i>	<i>Avg Salary</i>
Bunge (<i>expansion</i>) U.S. <i>grain</i>	St. Charles	\$ 140M		
Plains All American U.S. <i>crude oil storage</i>	St. James	\$ 50M		
Momentive Specialty Chemicals U.S.	St. Charles	\$ 38M	8	\$ 82K

Economic Development (cont'd)

	<i>Parish</i>	<i>Capital Investment</i>	<i># Direct Jobs</i>	<i>Avg Salary</i>
Kongsberg Maritime <i>NORWAY office & training</i>	St. Charles	\$ 15M	200	\$ 100K
Denka Performance Elastomers HQ U.S.	St. John		16 corporate	\$ 80K

\$23.262 billion capital investment and, at least, 3,739 direct jobs

Container Terminal Project

Shipping Cost Comparison

ORIGIN: Shanghai

DESTINATION: Chicago

<u>PORT</u>	<u>APPR COST/TEU</u>	<u>RAIL LINE</u>
Port of South LA	\$ 688	Canadian National
Seattle	\$ 969	BNSF Railway
Charleston	\$ 1,400	CSX Transportation
Oakland	\$ 1,551	Union Pacific

PSL Consultants

AUX INITIATIVES

General Robert Crear

ADAMS & REESE

Jeff Brooks

JAMES PURPERA GOVERNMENTAL CONSULTING

James Purpera

CAPITAL OUTLAY SPECIALIST

TJC GROUP

Tim Johnson

PUBLIC AFFAIRS/

COMMUNITY OUTREACH

GOVERNMENTAL RELATIONS

WORKFORCE DEVELOPMENT

TOP DRAWER/ FOCUS STRATEGIES

Mary Patricia Wray

Laura Veazey

MELTZ

COMMUNICATIONS

Gary Meltz

SABISTON

CONSULTANTS

Norma Jane Sabiston





Port of South Louisiana is ranked as the #1

LARGEST TONNAGE PORT IN THE WESTERN HEMISPHERE!



**Port Of
South Louisiana**
TRANSPORTATION CENTER OF THE AMERICAS



Port of South Louisiana is ranked as the #1

GRAIN EXPORTER *IN THE UNITED STATES!*



Port of South Louisiana is ranked as the #1

FOREIGN TRADE ZONE IN THE U.S. FOR MERCHANDISE RCVD!



Port of South Louisiana is ranked as the #2

***ENERGY TRANSFER PORT* IN THE UNITED STATES!**



...IMPORTANT TO OUR COMMUNITY

...IMPORTANT TO OUR STATE

...IMPORTANT TO OUR COUNTRY

...*IMPORTANT TO THE WORLD!*



SUPPORT YOUR PORT!