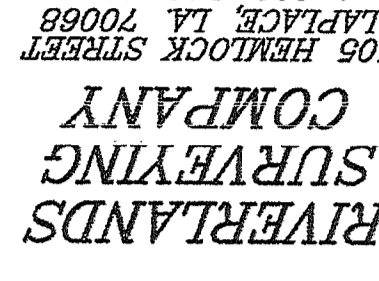


Project No: P & L INVESTMENTS, IX, LLC
 1050 17TH STREET, NW, #600
 WASHINGTON, DC 20036

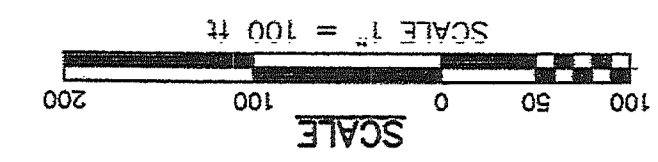


605 HEDLOCK STREET
 LAFAYETTE, LA 70508
 1-800-248-8888
 888-682-0388

Project Name: PLANTATION BUSINESS CAMPUS
 Project Location: DESTREHAN, LOUISIANA
 Project Address: RIVER ROAD - LA HIGHWAY 48

ALTA/NSPS LAND TITLE SURVEY
 LOT 4-2, LOT A-1, TRACTS UDP-4, UDP-5 & UDP-6 OF PLANTATION BUSINESS CAMPUS.
 SECTION 1, TRACT 4-II-A-1, TRACT 4-II-A-2, TRACT 4-II-A-4, TRACT 4-II-A-5, PLANTATION BUSINESS CAMPUS, TRACTS UDP-1, UDP-2 & UDP-3 OF TRACT C, & PARCEL B (FROM ST. CHARLES PARISH SCHOOL BOARD PROPERTY)
 ALL ABOVE TRACTS & PARCELS LISTED WITHIN TRACT C OF DESTREHAN PLANTATION, SECTION 4, T-13-S, R-8-E, EAST OF THE MISSISSIPPI RIVER, DESTREHAN, LOUISIANA

REVISIONS	DATE:
Drawn by: KFB	
Checked by: SFC	
Proj. No. 11568.W02885	



SIGNED AND SEALED:
 Stephen P. Flynn, P.L.S.
 LA ST. REG. NO. 4668
 DATE OF PLAT: 9/26/2016

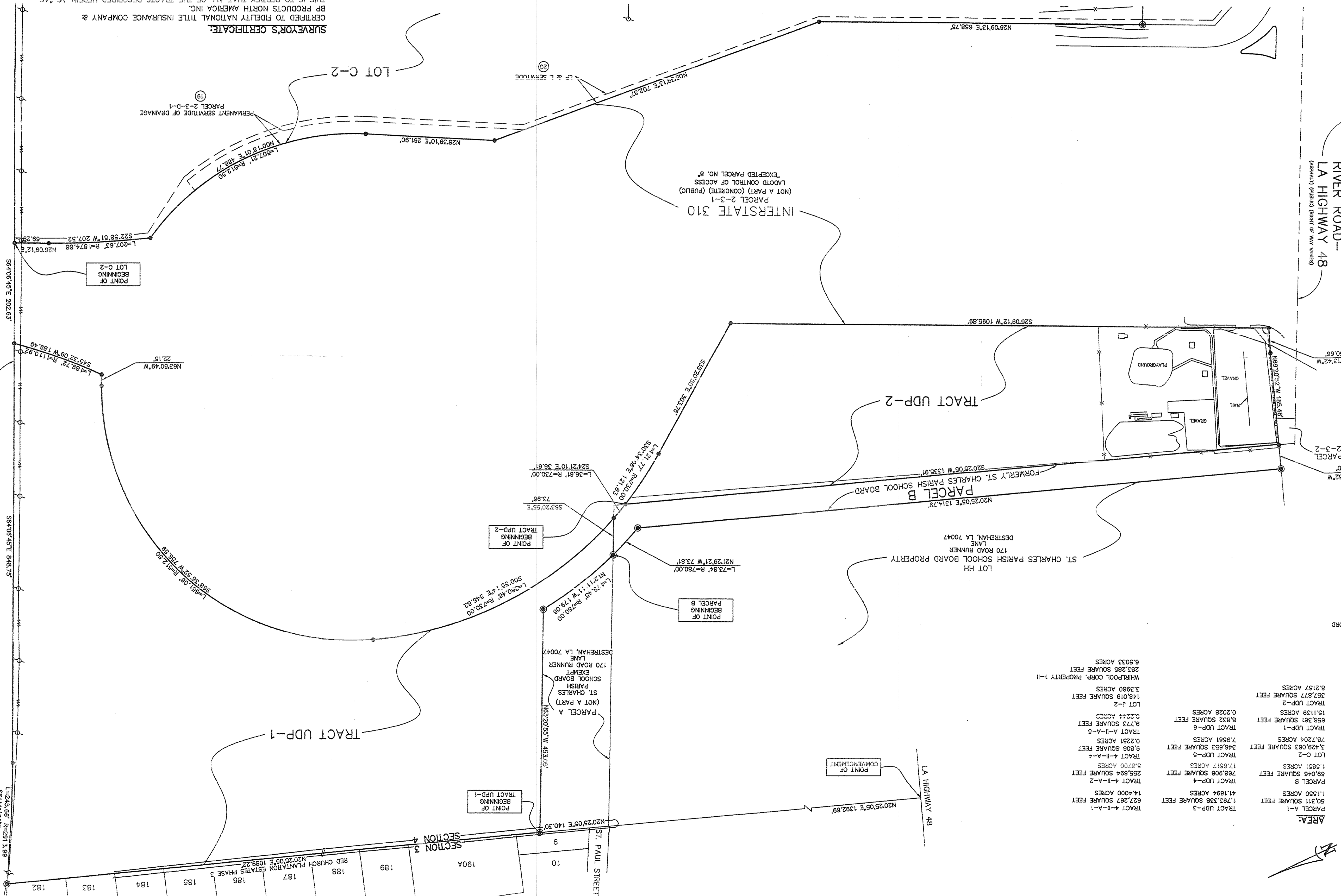
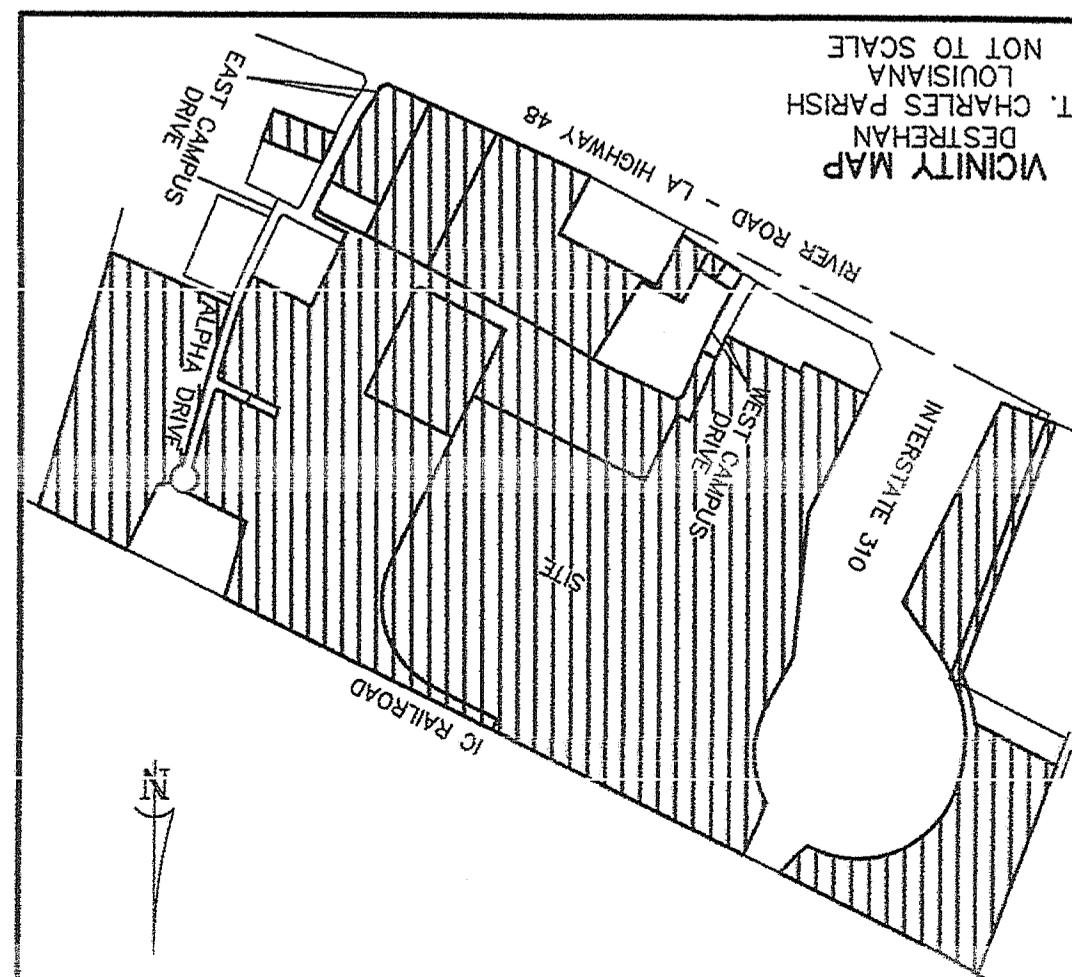
CERTIFIED TO FIDELITY NATIONAL THE INSURANCE COMPANY & SURVEYOR'S CERTIFICATE:
 THIS IS TO CERTIFY THAT THIS MAP OR PLAT AND THE SURVEY ON WHICH IT IS BASED WERE MADE IN ACCORDANCE WITH THE 2016 MINIMUM STANDARD DETAILED REQUIREMENTS FOR ALTA/NSPS LAND TITLE SURVEYS, JOINTLY ESTABLISHED AND ADOPTED BY ALTA AND NSPS, AND INCLUDES ITEMS 1, 2, 3, 4, 11, 13 & 19 OF TABLE A THERE OF. THE FIELDWORK WAS COMPLETED ON SEPTEMBER 26, 2016

- ADJACENT OWNERS:**
- LOT 187 CORAL M. FAIGOUT JR., DESTREHAN, LA 70047
 - LOT 188 MICHAEL A. BROUSSARD, DESTREHAN, LA 70047
 - LOT 189 MICHAEL A. BROUSSARD, DESTREHAN, LA 70047
 - LOT 182 STEVE ALLEN CLARK, DESTREHAN, LA 70047
 - LOT 184 STEVE ALLEN CLARK, DESTREHAN, LA 70047
 - LOT 185 JOHN L. ZEISS, DESTREHAN, LA 70047
 - LOT 186 JOHN L. ZEISS, DESTREHAN, LA 70047
 - LOT 187 JOHN L. ZEISS, DESTREHAN, LA 70047
 - LOT 188 JOHN L. ZEISS, DESTREHAN, LA 70047
 - LOT 189 JOHN L. ZEISS, DESTREHAN, LA 70047
 - LOT 190 JOHN L. ZEISS, DESTREHAN, LA 70047
 - LOT 191 JOHN L. ZEISS, DESTREHAN, LA 70047
 - LOT 192 JOHN L. ZEISS, DESTREHAN, LA 70047
 - LOT 193 JOHN L. ZEISS, DESTREHAN, LA 70047
 - LOT 194 JOHN L. ZEISS, DESTREHAN, LA 70047
 - LOT 195 JOHN L. ZEISS, DESTREHAN, LA 70047
 - LOT 196 JOHN L. ZEISS, DESTREHAN, LA 70047
 - LOT 197 JOHN L. ZEISS, DESTREHAN, LA 70047
 - LOT 198 JOHN L. ZEISS, DESTREHAN, LA 70047
 - LOT 199 JOHN L. ZEISS, DESTREHAN, LA 70047
 - LOT 200 JOHN L. ZEISS, DESTREHAN, LA 70047

FLOOD STATEMENT:
 THE SURVEYED PARCEL IS IN ZONE "X" & "A99" PER FEDERAL INSURANCE RATE MAP NUMBER 22016-0150C DATED 5/2/2003 LOMR.

BASIS OF BEARING:
 BEARINGS HEREON ARE ESTABLISHED BY THE LOUISIANA STATE COORDINATE SYSTEM, LOUISIANA SOUTH ZONE 1702 USING LEGA SMARTNET SOLUTION DATED 8/30/2016 NAD83.

SURVEYOR'S NOTES:
 1. THIS PLAT IS CORRECTED AND IN ACCORDANCE WITH A PHYSICAL SURVEY MADE ON THE GROUND UNDER THE DIRECTION OF THE SURVEYOR AND COMPILED WITH THE REQUIREMENTS OF LOUISIANA'S "STANDARDS OF PRACTICE FOR BOUNDARY SURVEYS".
 2. THIS PLAT IS CORRECTED AND IN ACCORDANCE WITH THE REQUIREMENTS OF LOUISIANA'S "STANDARDS OF PRACTICE FOR BOUNDARY SURVEYS".
 3. ALL PARCELS SHOWN HEREON ARE CONTAINING NO GAPS OR OVERLAPS ALONG THEIR COMMON BOUNDARIES, UNLESS SHOWN OR NOTED HEREON.
 4. THE SURVEYOR'S BEST INTERESTS (HTTP://STANDARDASSESSOR.AZUREMESH.COM) ASSESSOR'S BEST INTERESTS (HTTP://STANDARDASSESSOR.AZUREMESH.COM) FOR A CLASS B SURVEY.
 5. ADJOINING PROPERTY OWNERS PROVIDED BY THE ST. CHARLES PARISH TAX DEPARTMENT.
 6. SURVEY OF A PORTION OF PLANTATION BUSINESS CAMPUS BY DADING, MARQUES & ASSOCIATES, INC. DATED 2/7/1990.
 7. SURVEY OF TRACTS A, B & C OF DESTREHAN PLANTATION BY DADING, MARQUES & ASSOCIATES, INC. DATED 2/7/1990.
 8. SURVEY OF A PORTION OF ST. CHARLES PARISH TO BE REVOKED LOCATED IN PLANTATION BUSINESS CAMPUS BY R.P. FONTAUBERT, JR. P.L.S. DATED FEBRUARY 1, 1990.
 9. SURVEY OF TRACTS A, B & C OF DESTREHAN PLANTATION BY DADING, MARQUES & ASSOCIATES, INC. DATED 2/7/1990.
 10. SURVEY OF A PORTION OF ST. CHARLES PARISH TO BE REVOKED LOCATED IN PLANTATION BUSINESS CAMPUS BY R.P. FONTAUBERT, JR. P.L.S. DATED FEBRUARY 1, 1990.
 11. SURVEY OF TRACTS A, B & C OF DESTREHAN PLANTATION BY DADING, MARQUES & ASSOCIATES, INC. DATED 2/7/1990.
 12. SURVEY OF A PORTION OF ST. CHARLES PARISH TO BE REVOKED LOCATED IN PLANTATION BUSINESS CAMPUS BY R.P. FONTAUBERT, JR. P.L.S. DATED FEBRUARY 1, 1990.
 13. SURVEY OF TRACTS A, B & C OF DESTREHAN PLANTATION BY DADING, MARQUES & ASSOCIATES, INC. DATED 2/7/1990.
 14. SURVEY OF A PORTION OF ST. CHARLES PARISH TO BE REVOKED LOCATED IN PLANTATION BUSINESS CAMPUS BY R.P. FONTAUBERT, JR. P.L.S. DATED FEBRUARY 1, 1990.
 15. SURVEY OF TRACTS A, B & C OF DESTREHAN PLANTATION BY DADING, MARQUES & ASSOCIATES, INC. DATED 2/7/1990.
 16. SURVEY OF A PORTION OF ST. CHARLES PARISH TO BE REVOKED LOCATED IN PLANTATION BUSINESS CAMPUS BY R.P. FONTAUBERT, JR. P.L.S. DATED FEBRUARY 1, 1990.
 17. SURVEY OF TRACTS A, B & C OF DESTREHAN PLANTATION BY DADING, MARQUES & ASSOCIATES, INC. DATED 2/7/1990.
 18. SURVEY OF A PORTION OF ST. CHARLES PARISH TO BE REVOKED LOCATED IN PLANTATION BUSINESS CAMPUS BY R.P. FONTAUBERT, JR. P.L.S. DATED FEBRUARY 1, 1990.
 19. SURVEY OF TRACTS A, B & C OF DESTREHAN PLANTATION BY DADING, MARQUES & ASSOCIATES, INC. DATED 2/7/1990.
 20. SURVEY OF A PORTION OF ST. CHARLES PARISH TO BE REVOKED LOCATED IN PLANTATION BUSINESS CAMPUS BY R.P. FONTAUBERT, JR. P.L.S. DATED FEBRUARY 1, 1990.
 21. SURVEY OF TRACTS A, B & C OF DESTREHAN PLANTATION BY DADING, MARQUES & ASSOCIATES, INC. DATED 2/7/1990.
 22. SURVEY OF A PORTION OF ST. CHARLES PARISH TO BE REVOKED LOCATED IN PLANTATION BUSINESS CAMPUS BY R.P. FONTAUBERT, JR. P.L.S. DATED FEBRUARY 1, 1990.
 23. SURVEY OF TRACTS A, B & C OF DESTREHAN PLANTATION BY DADING, MARQUES & ASSOCIATES, INC. DATED 2/7/1990.
 24. SURVEY OF A PORTION OF ST. CHARLES PARISH TO BE REVOKED LOCATED IN PLANTATION BUSINESS CAMPUS BY R.P. FONTAUBERT, JR. P.L.S. DATED FEBRUARY 1, 1990.
 25. SURVEY OF TRACTS A, B & C OF DESTREHAN PLANTATION BY DADING, MARQUES & ASSOCIATES, INC. DATED 2/7/1990.
 26. SURVEY OF A PORTION OF ST. CHARLES PARISH TO BE REVOKED LOCATED IN PLANTATION BUSINESS CAMPUS BY R.P. FONTAUBERT, JR. P.L.S. DATED FEBRUARY 1, 1990.
 27. SURVEY OF TRACTS A, B & C OF DESTREHAN PLANTATION BY DADING, MARQUES & ASSOCIATES, INC. DATED 2/7/1990.
 28. SURVEY OF A PORTION OF ST. CHARLES PARISH TO BE REVOKED LOCATED IN PLANTATION BUSINESS CAMPUS BY R.P. FONTAUBERT, JR. P.L.S. DATED FEBRUARY 1, 1990.
 29. SURVEY OF TRACTS A, B & C OF DESTREHAN PLANTATION BY DADING, MARQUES & ASSOCIATES, INC. DATED 2/7/1990.
 30. SURVEY OF A PORTION OF ST. CHARLES PARISH TO BE REVOKED LOCATED IN PLANTATION BUSINESS CAMPUS BY R.P. FONTAUBERT, JR. P.L.S. DATED FEBRUARY 1, 1990.
 31. SURVEY OF TRACTS A, B & C OF DESTREHAN PLANTATION BY DADING, MARQUES & ASSOCIATES, INC. DATED 2/7/1990.
 32. SURVEY OF A PORTION OF ST. CHARLES PARISH TO BE REVOKED LOCATED IN PLANTATION BUSINESS CAMPUS BY R.P. FONTAUBERT, JR. P.L.S. DATED FEBRUARY 1, 1990.
 33. SURVEY OF TRACTS A, B & C OF DESTREHAN PLANTATION BY DADING, MARQUES & ASSOCIATES, INC. DATED 2/7/1990.
 34. SURVEY OF A PORTION OF ST. CHARLES PARISH TO BE REVOKED LOCATED IN PLANTATION BUSINESS CAMPUS BY R.P. FONTAUBERT, JR. P.L.S. DATED FEBRUARY 1, 1990.
 35. SURVEY OF TRACTS A, B & C OF DESTREHAN PLANTATION BY DADING, MARQUES & ASSOCIATES, INC. DATED 2/7/1990.
 36. SURVEY OF A PORTION OF ST. CHARLES PARISH TO BE REVOKED LOCATED IN PLANTATION BUSINESS CAMPUS BY R.P. FONTAUBERT, JR. P.L.S. DATED FEBRUARY 1, 1990.
 37. SURVEY OF TRACTS A, B & C OF DESTREHAN PLANTATION BY DADING, MARQUES & ASSOCIATES, INC. DATED 2/7/1990.
 38. SURVEY OF A PORTION OF ST. CHARLES PARISH TO BE REVOKED LOCATED IN PLANTATION BUSINESS CAMPUS BY R.P. FONTAUBERT, JR. P.L.S. DATED FEBRUARY 1, 1990.
 39. SURVEY OF TRACTS A, B & C OF DESTREHAN PLANTATION BY DADING, MARQUES & ASSOCIATES, INC. DATED 2/7/1990.
 40. SURVEY OF A PORTION OF ST. CHARLES PARISH TO BE REVOKED LOCATED IN PLANTATION BUSINESS CAMPUS BY R.P. FONTAUBERT, JR. P.L.S. DATED FEBRUARY 1, 1990.
 41. SURVEY OF TRACTS A, B & C OF DESTREHAN PLANTATION BY DADING, MARQUES & ASSOCIATES, INC. DATED 2/7/1990.
 42. SURVEY OF A PORTION OF ST. CHARLES PARISH TO BE REVOKED LOCATED IN PLANTATION BUSINESS CAMPUS BY R.P. FONTAUBERT, JR. P.L.S. DATED FEBRUARY 1, 1990.
 43. SURVEY OF TRACTS A, B & C OF DESTREHAN PLANTATION BY DADING, MARQUES & ASSOCIATES, INC. DATED 2/7/1990.
 44. SURVEY OF A PORTION OF ST. CHARLES PARISH TO BE REVOKED LOCATED IN PLANTATION BUSINESS CAMPUS BY R.P. FONTAUBERT, JR. P.L.S. DATED FEBRUARY 1, 1990.
 45. SURVEY OF TRACTS A, B & C OF DESTREHAN PLANTATION BY DADING, MARQUES & ASSOCIATES, INC. DATED 2/7/1990.
 46. SURVEY OF A PORTION OF ST. CHARLES PARISH TO BE REVOKED LOCATED IN PLANTATION BUSINESS CAMPUS BY R.P. FONTAUBERT, JR. P.L.S. DATED FEBRUARY 1, 1990.
 47. SURVEY OF TRACTS A, B & C OF DESTREHAN PLANTATION BY DADING, MARQUES & ASSOCIATES, INC. DATED 2/7/1990.
 48. SURVEY OF A PORTION OF ST. CHARLES PARISH TO BE REVOKED LOCATED IN PLANTATION BUSINESS CAMPUS BY R.P. FONTAUBERT, JR. P.L.S. DATED FEBRUARY 1, 1990.
 49. SURVEY OF TRACTS A, B & C OF DESTREHAN PLANTATION BY DADING, MARQUES & ASSOCIATES, INC. DATED 2/7/1990.
 50. SURVEY OF A PORTION OF ST. CHARLES PARISH TO BE REVOKED LOCATED IN PLANTATION BUSINESS CAMPUS BY R.P. FONTAUBERT, JR. P.L.S. DATED FEBRUARY 1, 1990.
 51. SURVEY OF TRACTS A, B & C OF DESTREHAN PLANTATION BY DADING, MARQUES & ASSOCIATES, INC. DATED 2/7/1990.
 52. SURVEY OF A PORTION OF ST. CHARLES PARISH TO BE REVOKED LOCATED IN PLANTATION BUSINESS CAMPUS BY R.P. FONTAUBERT, JR. P.L.S. DATED FEBRUARY 1, 1990.
 53. SURVEY OF TRACTS A, B & C OF DESTREHAN PLANTATION BY DADING, MARQUES & ASSOCIATES, INC. DATED 2/7/1990.
 54. SURVEY OF A PORTION OF ST. CHARLES PARISH TO BE REVOKED LOCATED IN PLANTATION BUSINESS CAMPUS BY R.P. FONTAUBERT, JR. P.L.S. DATED FEBRUARY 1, 1990.
 55. SURVEY OF TRACTS A, B & C OF DESTREHAN PLANTATION BY DADING, MARQUES & ASSOCIATES, INC. DATED 2/7/1990.
 56. SURVEY OF A PORTION OF ST. CHARLES PARISH TO BE REVOKED LOCATED IN PLANTATION BUSINESS CAMPUS BY R.P. FONTAUBERT, JR. P.L.S. DATED FEBRUARY 1, 1990.
 57. SURVEY OF TRACTS A, B & C OF DESTREHAN PLANTATION BY DADING, MARQUES & ASSOCIATES, INC. DATED 2/7/1990.
 58. SURVEY OF A PORTION OF ST. CHARLES PARISH TO BE REVOKED LOCATED IN PLANTATION BUSINESS CAMPUS BY R.P. FONTAUBERT, JR. P.L.S. DATED FEBRUARY 1, 1990.
 59. SURVEY OF TRACTS A, B & C OF DESTREHAN PLANTATION BY DADING, MARQUES & ASSOCIATES, INC. DATED 2/7/1990.
 60. SURVEY OF A PORTION OF ST. CHARLES PARISH TO BE REVOKED LOCATED IN PLANTATION BUSINESS CAMPUS BY R.P. FONTAUBERT, JR. P.L.S. DATED FEBRUARY 1, 1990.
 61. SURVEY OF TRACTS A, B & C OF DESTREHAN PLANTATION BY DADING, MARQUES & ASSOCIATES, INC. DATED 2/7/1990.
 62. SURVEY OF A PORTION OF ST. CHARLES PARISH TO BE REVOKED LOCATED IN PLANTATION BUSINESS CAMPUS BY R.P. FONTAUBERT, JR. P.L.S. DATED FEBRUARY 1, 1990.
 63. SURVEY OF TRACTS A, B & C OF DESTREHAN PLANTATION BY DADING, MARQUES & ASSOCIATES, INC. DATED 2/7/1990.
 64. SURVEY OF A PORTION OF ST. CHARLES PARISH TO BE REVOKED LOCATED IN PLANTATION BUSINESS CAMPUS BY R.P. FONTAUBERT, JR. P.L.S. DATED FEBRUARY 1, 1990.
 65. SURVEY OF TRACTS A, B & C OF DESTREHAN PLANTATION BY DADING, MARQUES & ASSOCIATES, INC. DATED 2/7/1990.
 66. SURVEY OF A PORTION OF ST. CHARLES PARISH TO BE REVOKED LOCATED IN PLANTATION BUSINESS CAMPUS BY R.P. FONTAUBERT, JR. P.L.S. DATED FEBRUARY 1, 1990.
 67. SURVEY OF TRACTS A, B & C OF DESTREHAN PLANTATION BY DADING, MARQUES & ASSOCIATES, INC. DATED 2/7/1990.
 68. SURVEY OF A PORTION OF ST. CHARLES PARISH TO BE REVOKED LOCATED IN PLANTATION BUSINESS CAMPUS BY R.P. FONTAUBERT, JR. P.L.S. DATED FEBRUARY 1, 1990.
 69. SURVEY OF TRACTS A, B & C OF DESTREHAN PLANTATION BY DADING, MARQUES & ASSOCIATES, INC. DATED 2/7/1990.
 70. SURVEY OF A PORTION OF ST. CHARLES PARISH TO BE REVOKED LOCATED IN PLANTATION BUSINESS CAMPUS BY R.P. FONTAUBERT, JR. P.L.S. DATED FEBRUARY 1, 1990.
 71. SURVEY OF TRACTS A, B & C OF DESTREHAN PLANTATION BY DADING, MARQUES & ASSOCIATES, INC. DATED 2/7/1990.
 72. SURVEY OF A PORTION OF ST. CHARLES PARISH TO BE REVOKED LOCATED IN PLANTATION BUSINESS CAMPUS BY R.P. FONTAUBERT, JR. P.L.S. DATED FEBRUARY 1, 1990.
 73. SURVEY OF TRACTS A, B & C OF DESTREHAN PLANTATION BY DADING, MARQUES & ASSOCIATES, INC. DATED 2/7/1990.
 74. SURVEY OF A PORTION OF ST. CHARLES PARISH TO BE REVOKED LOCATED IN PLANTATION BUSINESS CAMPUS BY R.P. FONTAUBERT, JR. P.L.S. DATED FEBRUARY 1, 1990.
 75. SURVEY OF TRACTS A, B & C OF DESTREHAN PLANTATION BY DADING, MARQUES & ASSOCIATES, INC. DATED 2/7/1990.
 76. SURVEY OF A PORTION OF ST. CHARLES PARISH TO BE REVOKED LOCATED IN PLANTATION BUSINESS CAMPUS BY R.P. FONTAUBERT, JR. P.L.S. DATED FEBRUARY 1, 1990.
 77. SURVEY OF TRACTS A, B & C OF DESTREHAN PLANTATION BY DADING, MARQUES & ASSOCIATES, INC. DATED 2/7/1990.
 78. SURVEY OF A PORTION OF ST. CHARLES PARISH TO BE REVOKED LOCATED IN PLANTATION BUSINESS CAMPUS BY R.P. FONTAUBERT, JR. P.L.S. DATED FEBRUARY 1, 1990.
 79. SURVEY OF TRACTS A, B & C OF DESTREHAN PLANTATION BY DADING, MARQUES & ASSOCIATES, INC. DATED 2/7/1990.
 80. SURVEY OF A PORTION OF ST. CHARLES PARISH TO BE REVOKED LOCATED IN PLANTATION BUSINESS CAMPUS BY R.P. FONTAUBERT, JR. P.L.S. DATED FEBRUARY 1, 1990.
 81. SURVEY OF TRACTS A, B & C OF DESTREHAN PLANTATION BY DADING, MARQUES & ASSOCIATES, INC. DATED 2/7/1990.
 82. SURVEY OF A PORTION OF ST. CHARLES PARISH TO BE REVOKED LOCATED IN PLANTATION BUSINESS CAMPUS BY R.P. FONTAUBERT, JR. P.L.S. DATED FEBRUARY 1, 1990.
 83. SURVEY OF TRACTS A, B & C OF DESTREHAN PLANTATION BY DADING, MARQUES & ASSOCIATES, INC. DATED 2/7/1990.
 84. SURVEY OF A PORTION OF ST. CHARLES PARISH TO BE REVOKED LOCATED IN PLANTATION BUSINESS CAMPUS BY R.P. FONTAUBERT, JR. P.L.S. DATED FEBRUARY 1, 1990.
 85. SURVEY OF TRACTS A, B & C OF DESTREHAN PLANTATION BY DADING, MARQUES & ASSOCIATES, INC. DATED 2/7/1990.
 86. SURVEY OF A PORTION OF ST. CHARLES PARISH TO BE REVOKED LOCATED IN PLANTATION BUSINESS CAMPUS BY R.P. FONTAUBERT, JR. P.L.S. DATED FEBRUARY 1, 1990.
 87. SURVEY OF TRACTS A, B & C OF DESTREHAN PLANTATION BY DADING, MARQUES & ASSOCIATES, INC. DATED 2/7/1990.
 88. SURVEY OF A PORTION OF ST. CHARLES PARISH TO BE REVOKED LOCATED IN PLANTATION BUSINESS CAMPUS BY R.P. FONTAUBERT, JR. P.L.S. DATED FEBRUARY 1, 1990.
 89. SURVEY OF TRACTS A, B & C OF DESTREHAN PLANTATION BY DADING, MARQUES & ASSOCIATES, INC. DATED 2/7/1990.
 90. SURVEY OF A PORTION OF ST. CHARLES PARISH TO BE REVOKED LOCATED IN PLANTATION BUSINESS CAMPUS BY R.P. FONTAUBERT, JR. P.L.S. DATED FEBRUARY 1, 1990.
 91. SURVEY OF TRACTS A, B & C OF DESTREHAN PLANTATION BY DADING, MARQUES & ASSOCIATES, INC. DATED 2/7/1990.
 92. SURVEY OF A PORTION OF ST. CHARLES PARISH TO BE REVOKED LOCATED IN PLANTATION BUSINESS CAMPUS BY R.P. FONTAUBERT, JR. P.L.S. DATED FEBRUARY 1, 1990.
 93. SURVEY OF TRACTS A, B & C OF DESTREHAN PLANTATION BY DADING, MARQUES & ASSOCIATES, INC. DATED 2/7/1990.
 94. SURVEY OF A PORTION OF ST. CHARLES PARISH TO BE REVOKED LOCATED IN PLANTATION BUSINESS CAMPUS BY R.P. FONTAUBERT, JR. P.L.S. DATED FEBRUARY 1, 1990.
 95. SURVEY OF TRACTS A, B & C OF DESTREHAN PLANTATION BY DADING, MARQUES & ASSOCIATES, INC. DATED 2/7/1990.
 96. SURVEY OF A PORTION OF ST. CHARLES PARISH TO BE REVOKED LOCATED IN PLANTATION BUSINESS CAMPUS BY R.P. FONTAUBERT, JR. P.L.S. DATED FEBRUARY 1, 1990.
 97. SURVEY OF TRACTS A, B & C OF DESTREHAN PLANTATION BY DADING, MARQUES & ASSOCIATES, INC. DATED 2/7/1990.
 98. SURVEY OF A PORTION OF ST. CHARLES PARISH TO BE REVOKED LOCATED IN PLANTATION BUSINESS CAMPUS BY R.P. FONTAUBERT, JR. P.L.S. DATED FEBRUARY 1, 1990.
 99. SURVEY OF TRACTS A, B & C OF DESTREHAN PLANTATION BY DADING, MARQUES & ASSOCIATES, INC. DATED 2/7/1990.
 100. SURVEY OF A PORTION OF ST. CHARLES PARISH TO BE REVOKED LOCATED IN PLANTATION BUSINESS CAMPUS BY R.P. FONTAUBERT, JR. P.L.S. DATED FEBRUARY 1, 1990.



IC RAILROAD (NOT A PART)

RIVER ROAD - LA HIGHWAY 48 (BOUNDARY OF PARCEL NO. 8)

INTERSTATE 310 (NOT A PART) (CONCRETE) (PUBUC) PARCEL 2-3-1

POINT OF BEGINNING LOT C-2

POINT OF BEGINNING PARCEL B

POINT OF BEGINNING TRACT UDP-2

POINT OF BEGINNING TRACT UDP-1

POINT OF COMMENCEMENT

SECTION 4	SECTION 3	SECTION 2	SECTION 1
182	183	184	185
186	187	188	189
190A	190B	190C	190D

ST. PAUL STREET, DESTREHAN, LA 70047

LA HIGHWAY 48