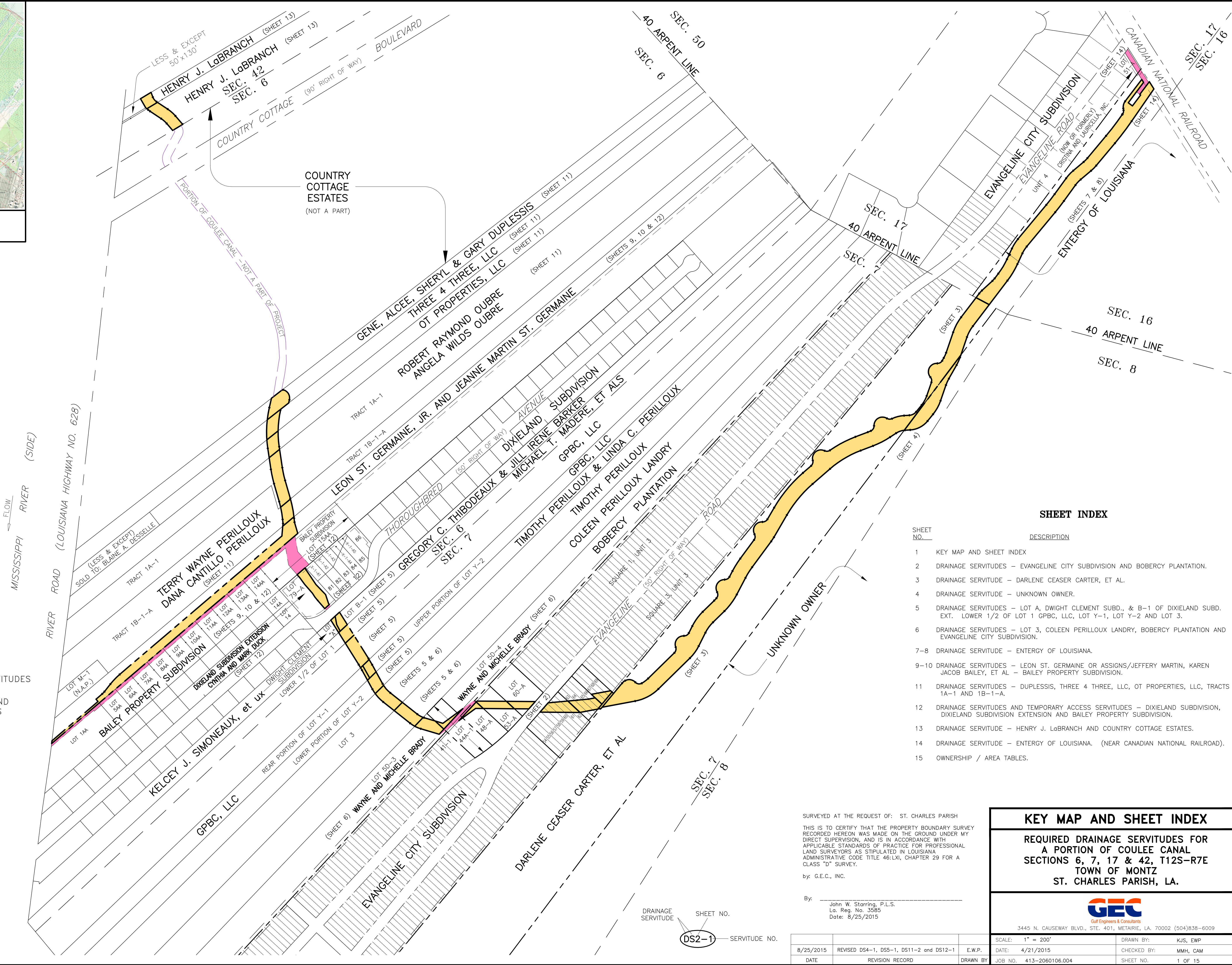
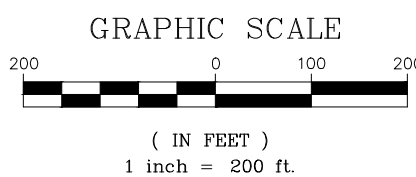




VICINITY MAP
NOT TO SCALE



= REQ'D DRAINAGE SERVITUDES
 = EXISTING DRAINAGE AND ACCESS SERVITUDES



SHEET INDEX

SHEET NO.	DESCRIPTION
1	KEY MAP AND SHEET INDEX
2	DRAINAGE SERVITUDES - EVANGELINE CITY SUBDIVISION AND BOBERCY PLANTATION.
3	DRAINAGE SERVITUDE - DARLENE CEASER CARTER, ET AL.
4	DRAINAGE SERVITUDE - UNKNOWN OWNER.
5	DRAINAGE SERVITUDES - LOT A, DWIGHT CLEMENT SUBD., & B-1 OF DIXIELAND SUBD. EXT. LOWER 1/2 OF LOT 1 GPBC, LLC, LOT Y-1, LOT Y-2 AND LOT 3.
6	DRAINAGE SERVITUDES - LOT 3, COLEEN PERILLOUX LANDRY, BOBERCY PLANTATION AND EVANGELINE CITY SUBDIVISION.
7-8	DRAINAGE SERVITUDE - ENTERGY OF LOUISIANA.
9-10	DRAINAGE SERVITUDES - LEON ST. GERMAINE OR ASSIGNS/JEFFERY MARTIN, KAREN JACOB BAILEY, ET AL - BAILEY PROPERTY SUBDIVISION.
11	DRAINAGE SERVITUDES - DUPLESSIS, THREE 4 THREE, LLC, OT PROPERTIES, LLC, TRACTS 1A-1 AND 1B-1-A.
12	DRAINAGE SERVITUDES AND TEMPORARY ACCESS SERVITUDES - DIXIELAND SUBDIVISION, DIXIELAND SUBDIVISION EXTENSION AND BAILEY PROPERTY SUBDIVISION.
13	DRAINAGE SERVITUDE - HENRY J. LaBRANCH AND COUNTRY COTTAGE ESTATES.
14	DRAINAGE SERVITUDE - ENTERGY OF LOUISIANA. (NEAR CANADIAN NATIONAL RAILROAD).
15	OWNERSHIP / AREA TABLES.

SURVEYED AT THE REQUEST OF: ST. CHARLES PARISH

THIS IS TO CERTIFY THAT THE PROPERTY BOUNDARY SURVEY RECORDED HEREON WAS MADE ON THE GROUND UNDER MY DIRECT SUPERVISION, AND IS IN ACCORDANCE WITH APPLICABLE STANDARDS OF PRACTICE FOR PROFESSIONAL LAND SURVEYORS AS STIPULATED IN LOUISIANA ADMINISTRATIVE CODE TITLE 48:LXI, CHAPTER 29 FOR A CLASS "D" SURVEY.

by: G.E.C., INC.

By: John W. Starring, P.L.S.
La. Reg. No. 3585
Date: 8/25/2015

8/25/2015	REVISED DS4-1, DS5-1, DS11-2 and DS12-1	E.W.P.
DATE	REVISION RECORD	DRAWN BY

KEY MAP AND SHEET INDEX

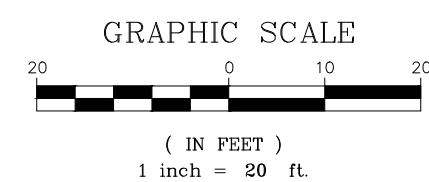
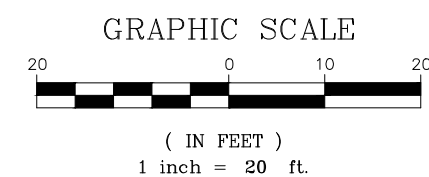
REQUIRED DRAINAGE SERVITUDES FOR
A PORTION OF COULEE CANAL
SECTIONS 6, 7, 17 & 42, T12S-R7E
TOWN OF MONTZ
ST. CHARLES PARISH, LA.



3445 N. CAUSEWAY BLVD., STE. 401, METAIRIE, LA. 70002 (504)838-6009

SCALE: 1" = 200'	DRAWN BY: KJS, EWP
DATE: 4/21/2015	CHECKED BY: MMH, CAM
JOB NO. 413-2060106.004	SHEET NO. 1 OF 15

G:\DWGS\413\0051.206016.004 Coulee Canal Improvements\DWG - Revised 8-25-15.dwg Aug 26, 2015 - 8:29am



3445 N. CAUSEWAY BLVD., STE. 401, METAIRIE, LA. 70002 (504)838-6000

				SCALE: 1" = 20'		DRAWN BY: KJS, EWP	
8/25/2015	REVISED DS4-1, DS5-1, DS11-2 and DS12-1	E.W.P.		DATE: 4/21/2015	CHECKED BY: MMH, CAF		
DATE	REVISION RECORD	DRAWN BY		JOB NO. 413-2060106.004	SHEET NO. 2		OF 15

			SCALE: 1" = 50'	DRAWN BY: KJS, EWP
8/25/2015	REVISED DS4-1, DS5-1, DS11-2 and DS12-1	E.W.P.	DATE: 4/21/2015	CHECKED BY: MMH, CAM
DATE	REVISION RECORD	DRAWN BY	JOB NO. 413-2060106.004	SHEET NO. 3 OF 15

SECTION 7
T12S-R7E

EVANGELINE ROAD (SIDE)

(SEE SHEET 3)

DARLENE CEASER CARTER, ET AL

30' GAS PIPELINE R.O.W.

DS4-1

10' ACCESS

DS3-1

EXIST. DITCH
TOP OF BANK

EXIST. DITCH
TOP OF BANK

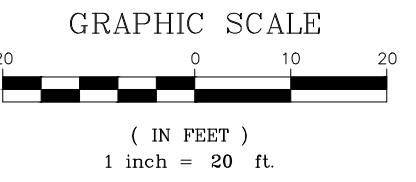
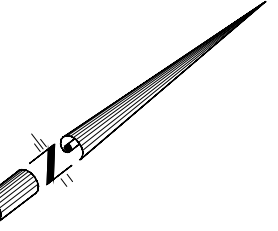
P.O.B.
DP4-1

P.O.C.
NW COR. ENTERGY OF LOUISIANA

UNKNOWN OWNER

UNKNOWN OWNER

SECTION 17
SECTION 7



DRAINAGE SERVITUDE

REQUIRED DRAINAGE SERVITUDES FOR
A PORTION OF COULEE CANAL
SECTIONS 6, 7, 17 & 42, T12S-R7E
TOWN OF MONTZ
ST. CHARLES PARISH, LA.



3445 N. CAUSEWAY BLVD., STE. 401, METAIRIE, LA. 70002 (504)838-6009

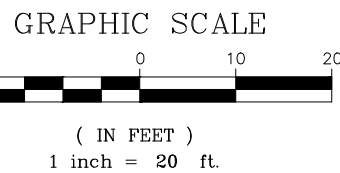
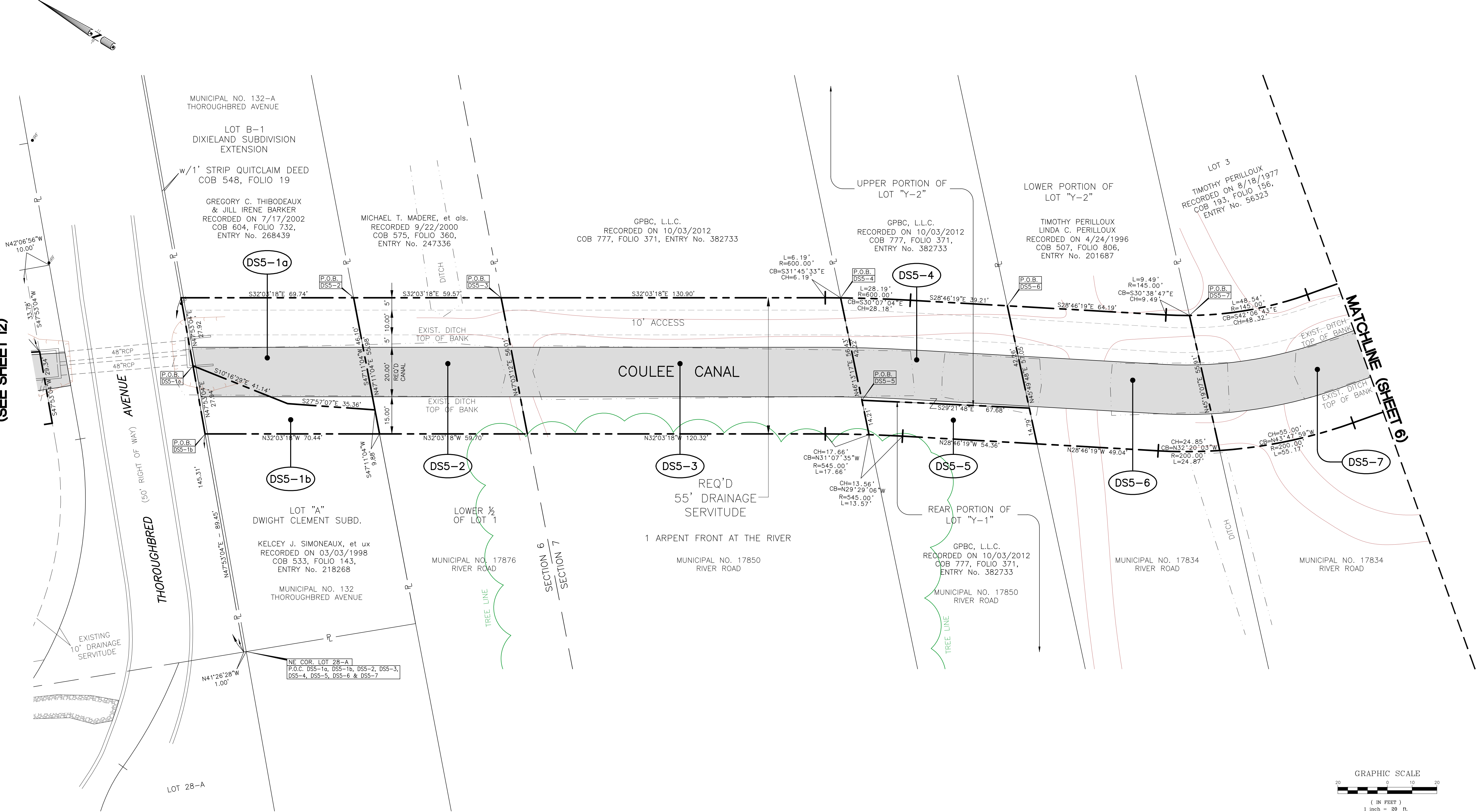
8/25/2015	REVISED DS4-1, DS5-1, DS11-2 and DS12-1	E.W.P.	SCALE: 1" = 20'	DRAWN BY: KJS, EWP
DATE	REVISION RECORD	DRAWN BY	DATE: 4/21/2015	CHECKED BY: MMH, CAM
			JOB NO. 413-2060106.004	SHEET NO. 4 OF 15

G:\DWG\51413\00512060106.004 Coulee Canal Improvements\DWG - Revised 8-25-2015\Coulee Canal Reap Drainage Servitudes with Geometry and Topo Survey - Revised 8-25-15.dwg Aug 26, 2015 - 8:31am

SECTIONS 6 AND 7
T12S-R7E

DIXIELAND SUBDIVISION EXTENSION

(SEE SHEET 12)



DRAINAGE SERVITUDES

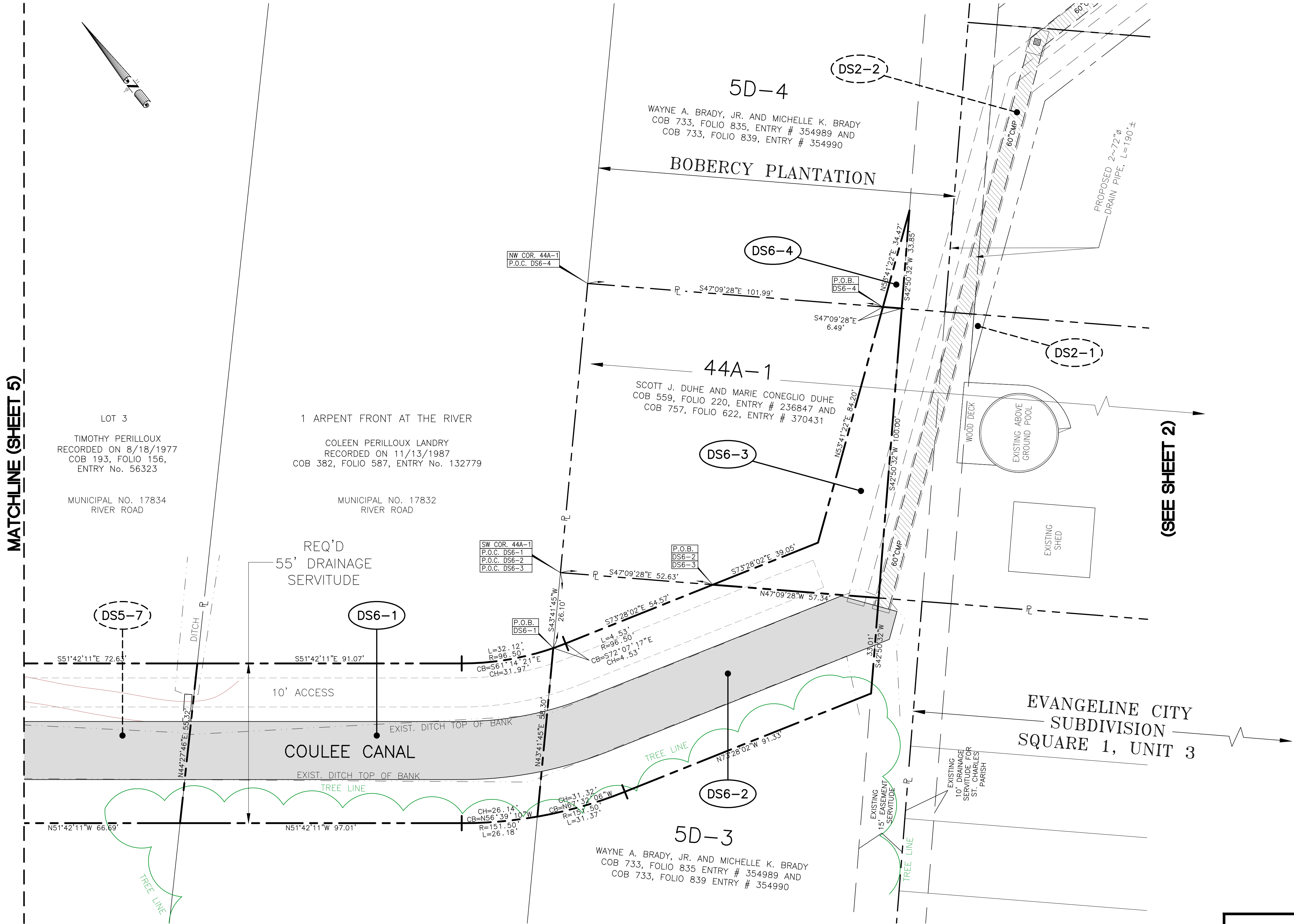
REQUIRED DRAINAGE SERVITUDES FOR
A PORTION OF COULEE CANAL
SECTIONS 6, 7, 17 & 42, T12S-R7E
TOWN OF MONTZ
ST. CHARLES PARISH, LA.



3445 N. CAUSEWAY BLVD., STE. 401, METAIRIE, LA. 70002 (504)838-6009

8/25/2015	REVISED DS4-1, DS5-1, DS11-2 and DS12-1	E.W.P.	SCALE: 1" = 20'	DRAWN BY: EWP
DATE	REVISION RECORD	DRAWN BY	DATE: 4/21/2015	CHECKED BY: CAM
			JOB NO. 413-2060106.004	SHEET NO. 5 OF 15

SECTION 7
T12S-R7E



DRAINAGE SERVITUDES

REQUIRED DRAINAGE SERVITUDES FOR
A PORTION OF COULEE CANAL
SECTIONS 6, 7, 17 & 42, T12S-R7E
TOWN OF MONTZ
ST. CHARLES PARISH, LA.



3445 N. CAUSEWAY BLVD., STE. 401, METAIRIE, LA. 70002 (504)838-6009

8/25/2015	REVISED DS4-1, DS5-1, DS11-2 and DS12-1	E.W.P.	SCALE: 1" = 20'	DRAWN BY: EWP
DATE	REVISION RECORD	DRAWN BY	DATE: 4/21/2015	CHECKED BY: CAM
			JOB NO. 413-2060106.004	SHEET NO. 6 OF 15

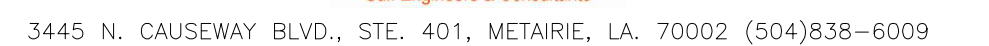
EVANGELINE ROAD (SIDE)



MATCHLINE (SHEET 8)



REQUIRED DRAINAGE SERVITUDES FOR
A PORTION OF COULEE CANAL
SECTIONS 6, 7, 17 & 42, T12S-R7E
TOWN OF MONTZ
ST. CHARLES PARISH, LA.



8/25/2015	REVISED DS4-1, DS5-1, DS11-2 and DS12-1	E.W.P.	SCALE: 1" = 20'	DRAWN BY: EWP
DATE	REVISION RECORD	DRAWN BY	DATE: 4/21/2015	CHECKED BY: CAM
			JOB NO. 413-2060106.004	SHEET NO. 7 OF 15

SECTION 17
T12S-R7E

EVANGELINE ROAD (SIDE)

EVANGELINE CITY SUB., UNIT 4

27A
NO. 674
CHRISTOPHER M. DUPLESSIS
BOOK 1351, PG. 8

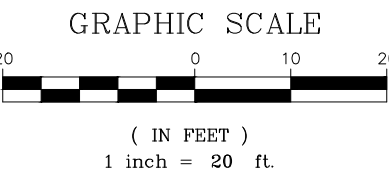
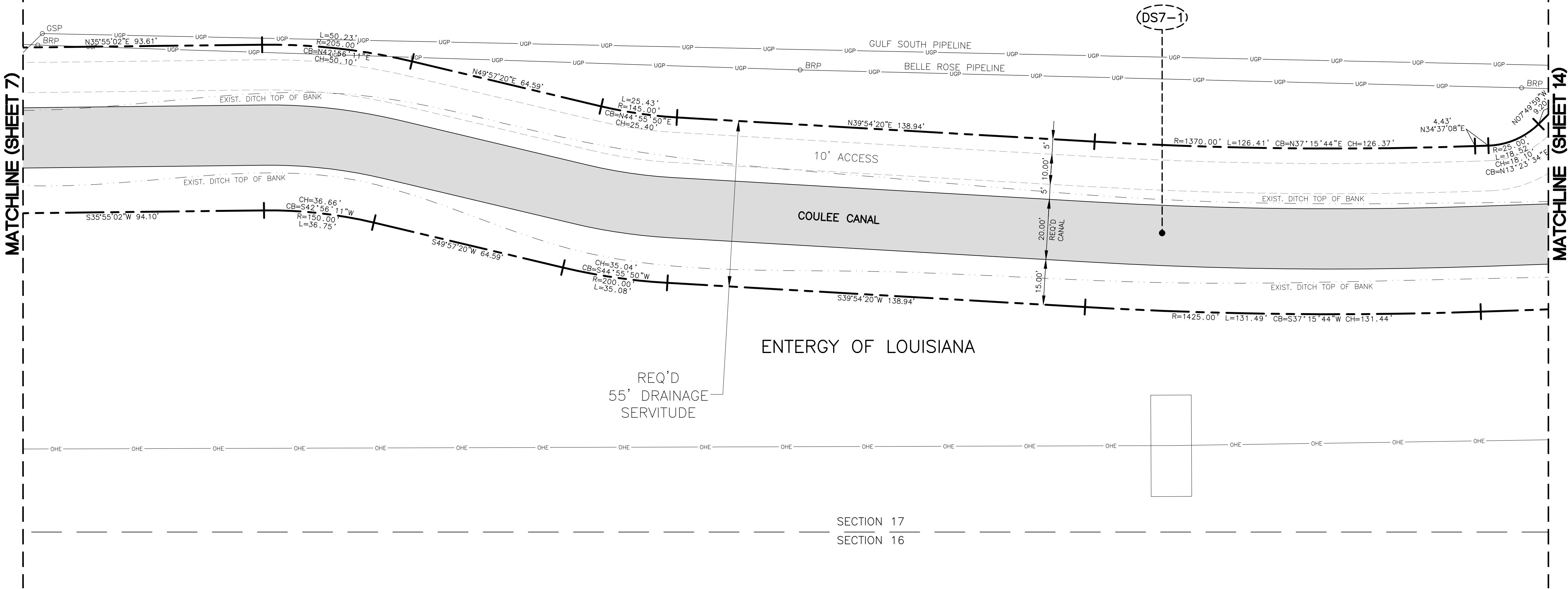
30A
VACANT
(NOW OR FORMERLY)
CRISTINA AND LAURICELLA, INC.

33A
VACANT
(NOW OR FORMERLY)
CRISTINA AND LAURICELLA, INC.

37A
NO. 702
DEREK DEMETRIUS WININGER
BOOK 1312, PG. 189

40A
NO. 720
SIDNEY J. TRICHE
BOOK 1262, PG. 561

44A
NO. 740
DENISE HYMEL BREWER
BOOK 1268, PAGE 555



DRAINAGE SERVITUDE

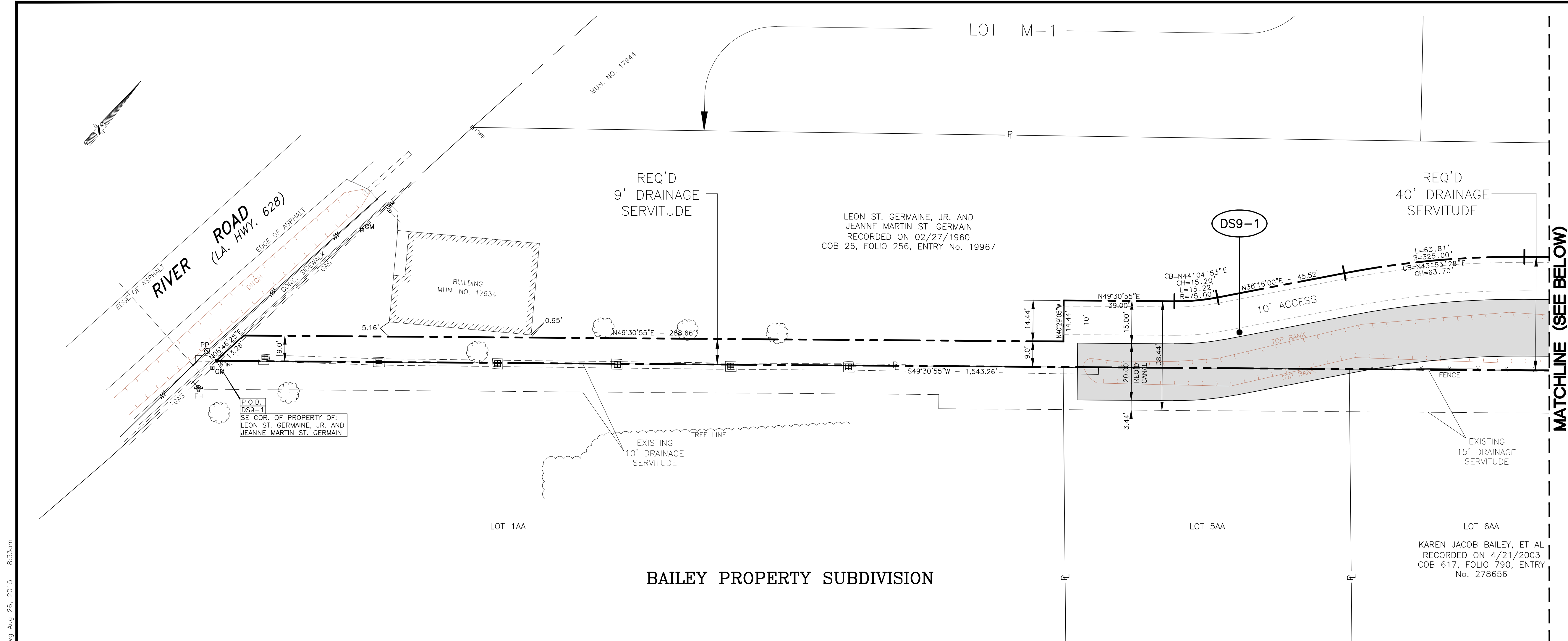
REQUIRED DRAINAGE SERVITUDES FOR
A PORTION OF COULEE CANAL
SECTIONS 6, 7, 17 & 42, T12S-R7E
TOWN OF MONTZ
ST. CHARLES PARISH, LA.



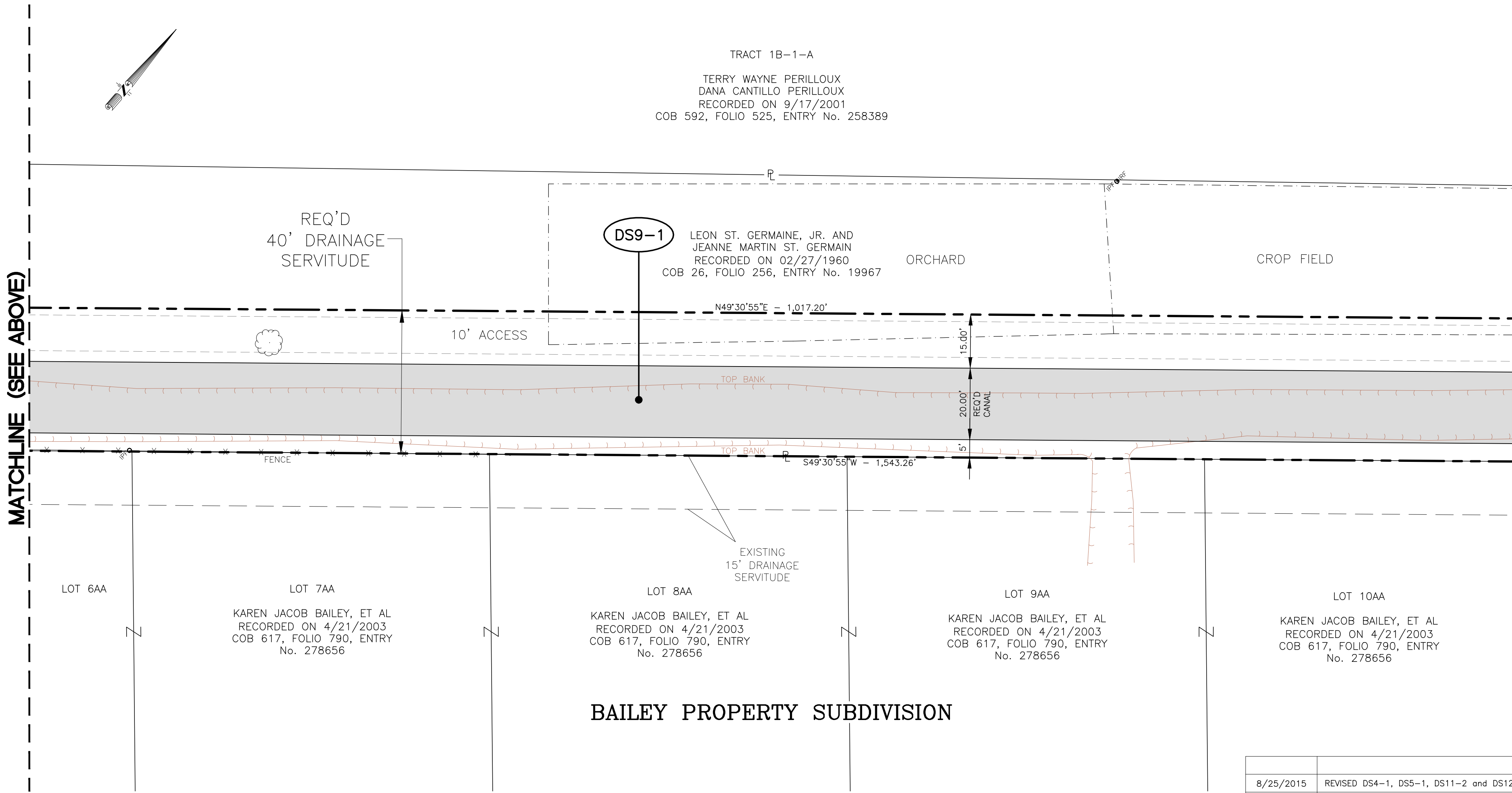
3445 N. CAUSEWAY BLVD., STE. 401, METAIRIE, LA. 70002 (504)838-6009

8/25/2015	REVISED DS4-1, DS5-1, DS11-2 and DS12-1	E.W.P.	SCALE: 1" = 20'	DRAWN BY: EWP
DATE	REVISION RECORD	DRAWN BY	DATE: 4/21/2015	CHECKED BY: CAM
			JOB NO. 413-2060106.004	SHEET NO. 8 OF 15

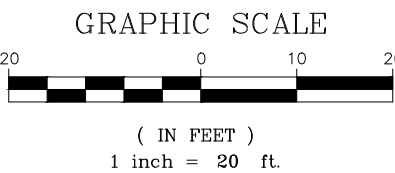
SECTION 6
T12S-R7E



MATCHLINE (SEE BELOW)



MATCHLINE (SEE ABOVE)



DRAINAGE SERVITUDE

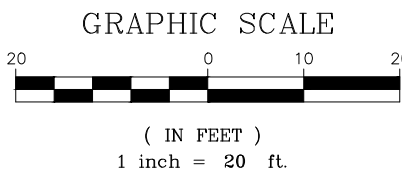
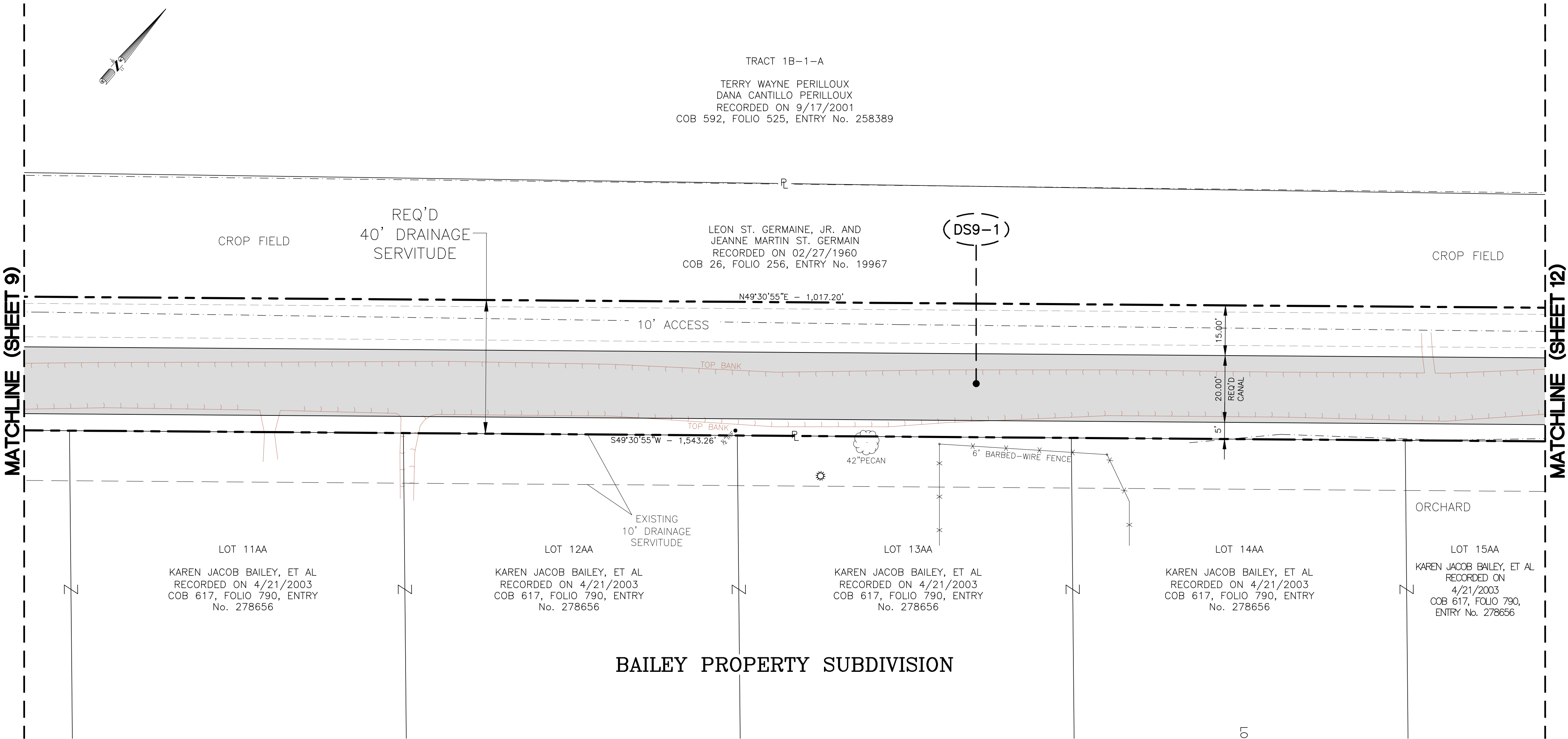
REQUIRED DRAINAGE SERVITUDES FOR
A PORTION OF COULEE CANAL
SECTIONS 6, 7, 17 & 42, T12S-R7E
TOWN OF MONTZ
ST. CHARLES PARISH, LA.



3445 N. CAUSEWAY BLVD., STE. 401, METAIRIE, LA. 70002 (504)838-6009

8/25/2015	REVISED DS4-1, DS5-1, DS11-2 and DS12-1	E.W.P.	SCALE: 1" = 20'	DRAWN BY: E.W.P.
DATE	REVISION RECORD	DRAWN BY	DATE: 4/21/2015	CHECKED BY: C.A.M.
			JOB NO. 413-2060106.004	SHEET NO. 9 OF 15

SECTION 6
T12S-R7E



DRAINAGE SERVITUDE

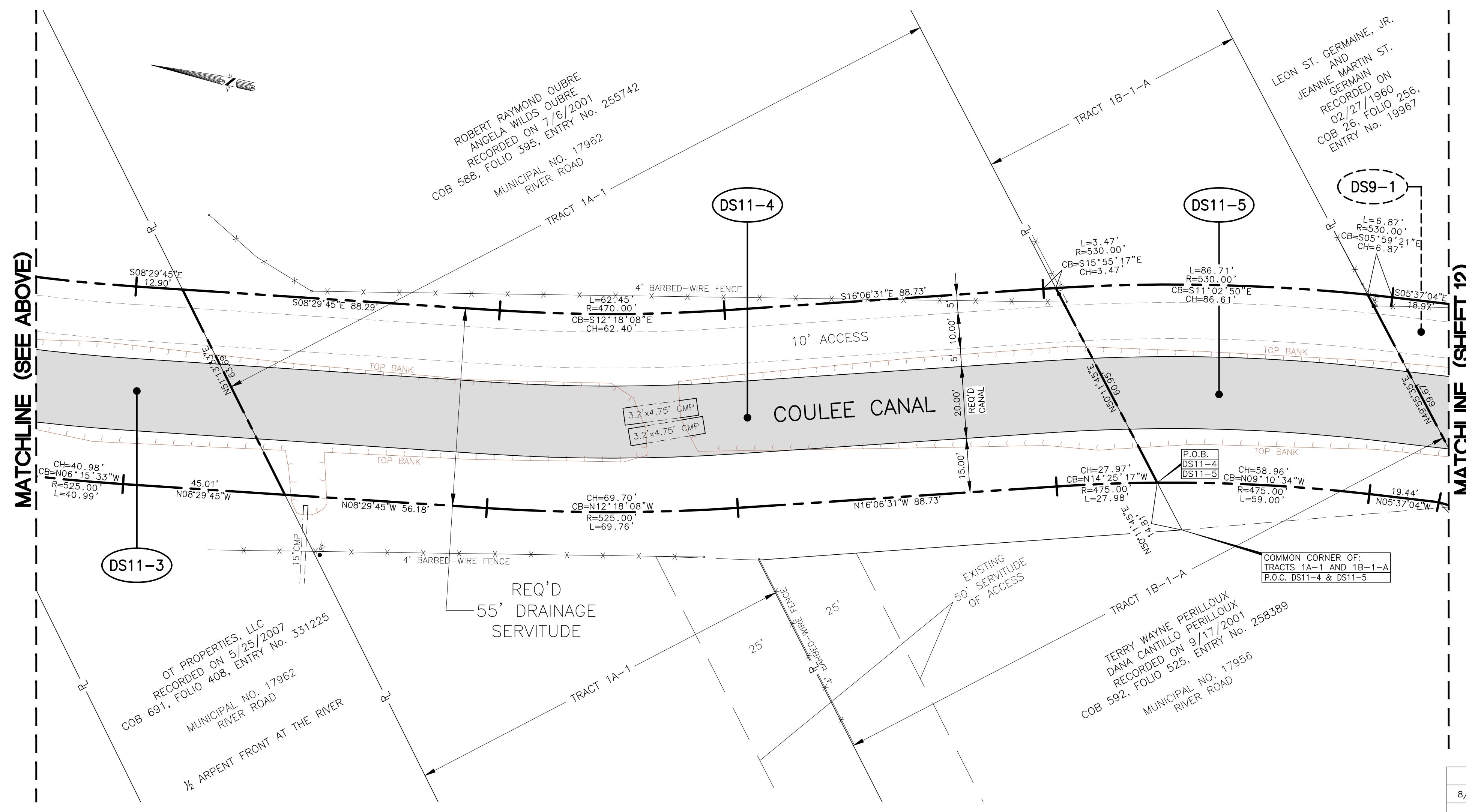
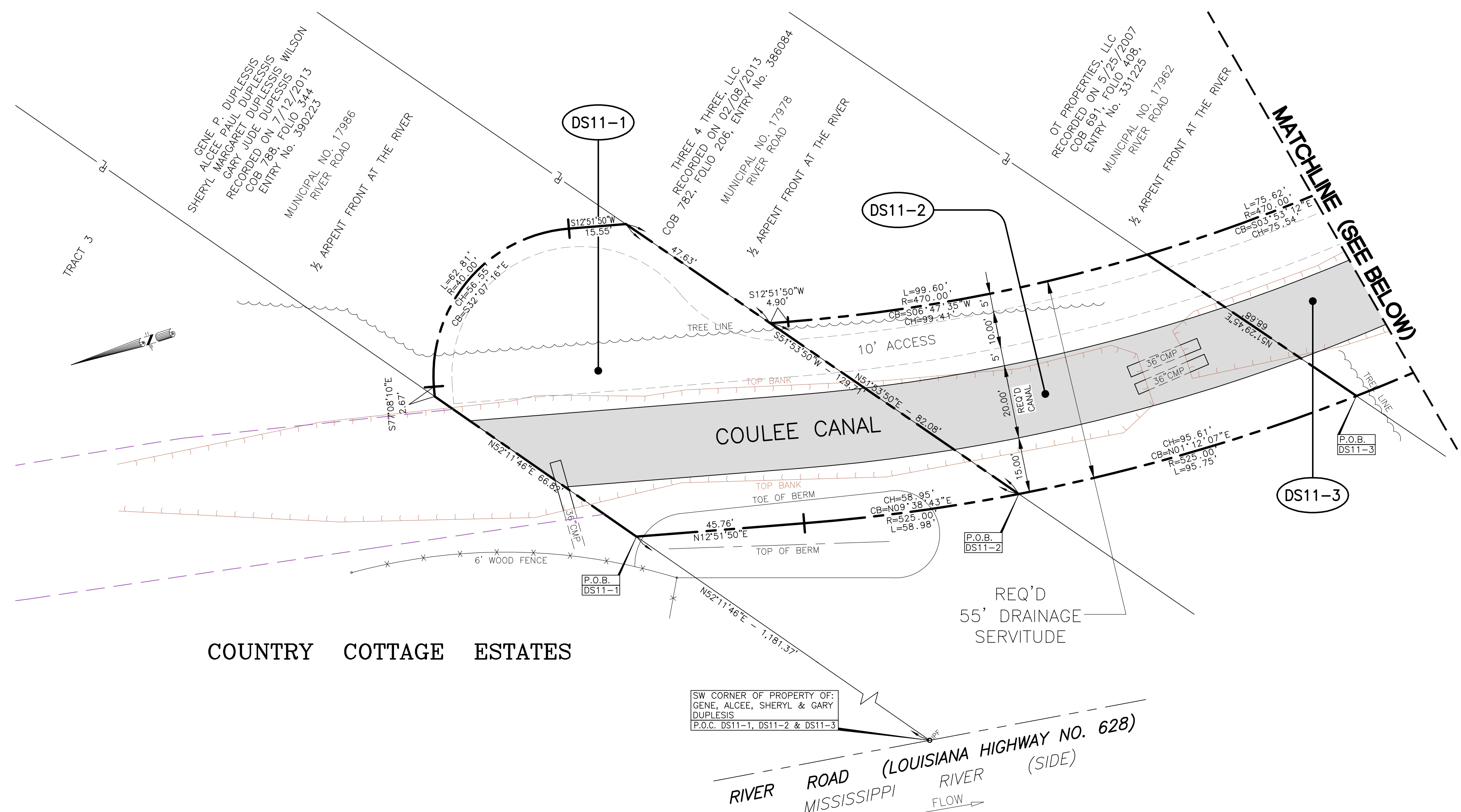
REQUIRED DRAINAGE SERVITUDES FOR
A PORTION OF COULEE CANAL
SECTIONS 6, 7, 17 & 42, T12S-R7E
TOWN OF MONTZ
ST. CHARLES PARISH, LA.



3445 N. CAUSEWAY BLVD., STE. 401, METAIRIE, LA. 70002 (504)838-6009

8/25/2015	REVISED DS4-1, DS5-1, DS11-2 and DS12-1	E.W.P.	SCALE: 1" = 20'	DRAWN BY: EWP
DATE	REVISION RECORD	DRAWN BY	DATE: 4/21/2015	CHECKED BY: CAM
			JOB NO. 413-2060106.004	SHEET NO. 10 OF 15

SECTION 6
T12S-R7E



DRAINAGE SERVITUDES

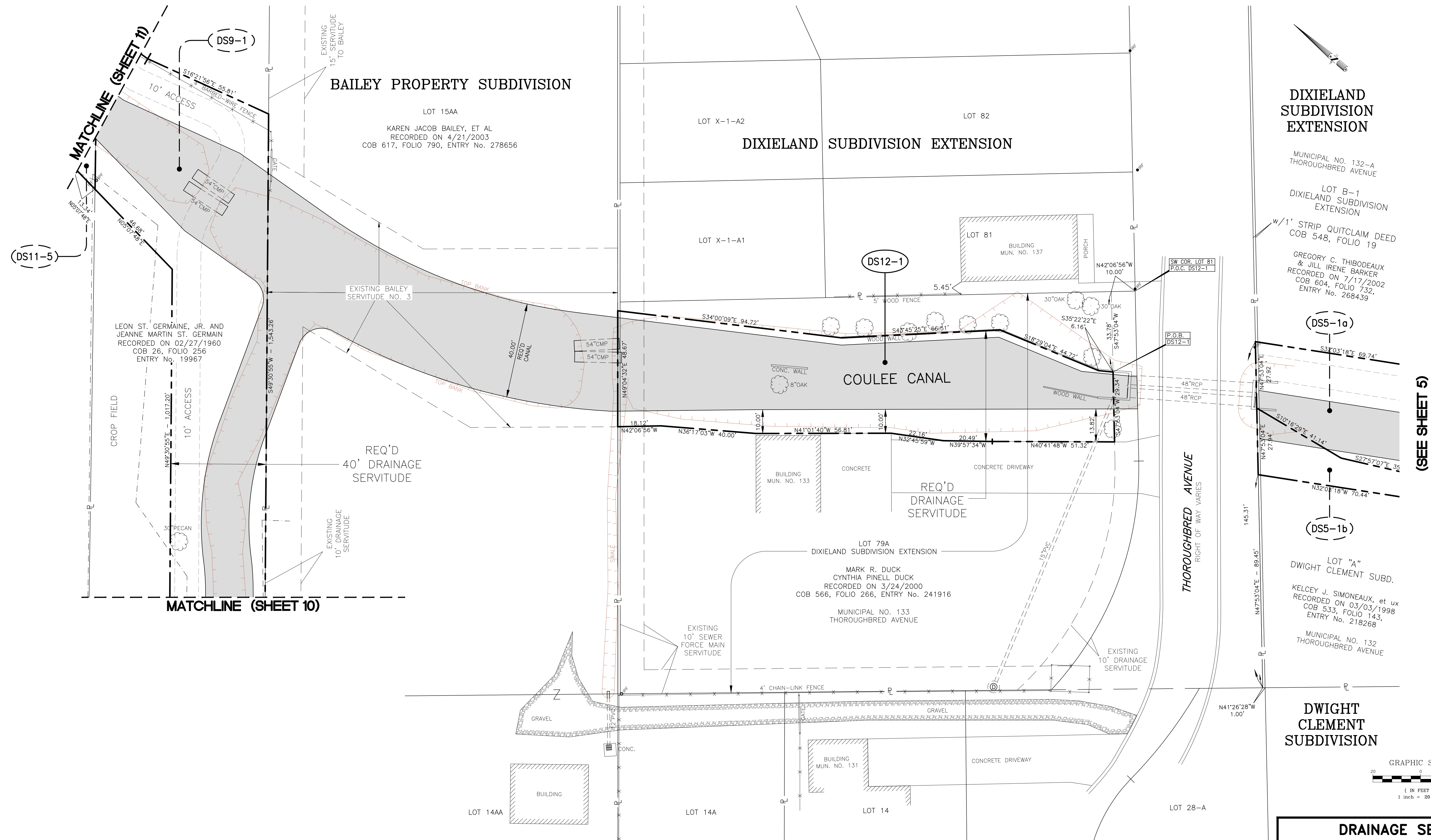
REQUIRED DRAINAGE SERVITUDES FOR
A PORTION OF COULEE CANAL
SECTIONS 6, 7, 17 & 42, T12S-R7E
TOWN OF MONTZ
ST. CHARLES PARISH, LA.



3445 N. CAUSEWAY BLVD., STE. 401, METAIRIE, LA. 70002 (504)838-6009

8/25/2015	REVISED DS4-1, DS5-1, DS11-2 and DS12-1	E.W.P.	SCALE: 1" = 20'	DRAWN BY: EWP
DATE	REVISION RECORD	DRAWN BY	DATE: 4/21/2015	CHECKED BY: CAM
			JOB NO. 413-2060106.004	SHEET NO. 11 OF 15

SECTION 6
T12S-R7E



DRAINAGE SERVITUDES

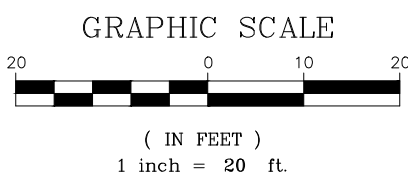
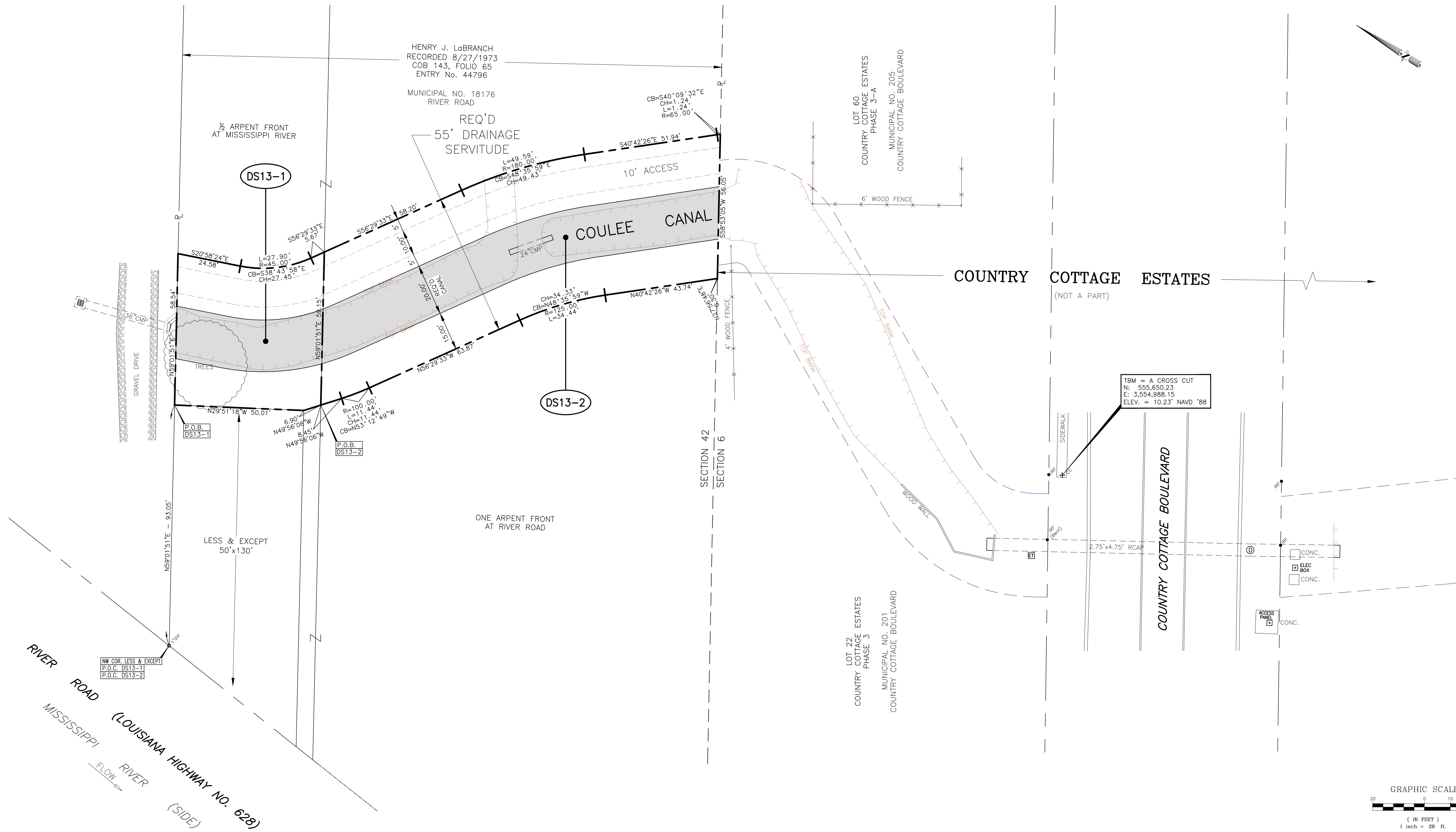
REQUIRED DRAINAGE SERVITUDES FOR
A PORTION OF COULEE CANAL
SECTIONS 6, 7, 17 & 42, T12S-R7E
TOWN OF MONTZ
ST. CHARLES PARISH, LA.



3445 N. CAUSEWAY BLVD., STE. 401, METAIRIE, LA. 70002 (504)838-6009

6/25/2015	REVISED DS4-1, DS5-1, DS11-2 and DS12-1	E.W.P.	SCALE: 1" = 20'	DRAWN BY: EWP
DATE	REVISION RECORD	DRAWN BY	DATE: 4/21/2015	CHECKED BY: CAM
			JOB NO. 413-2060106.004	SHEET NO. 12 OF 15

SECTIONS 6 & 42
T12S-R7E



DRAINAGE SERVITUDES

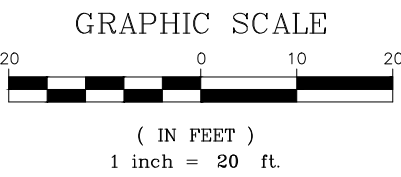
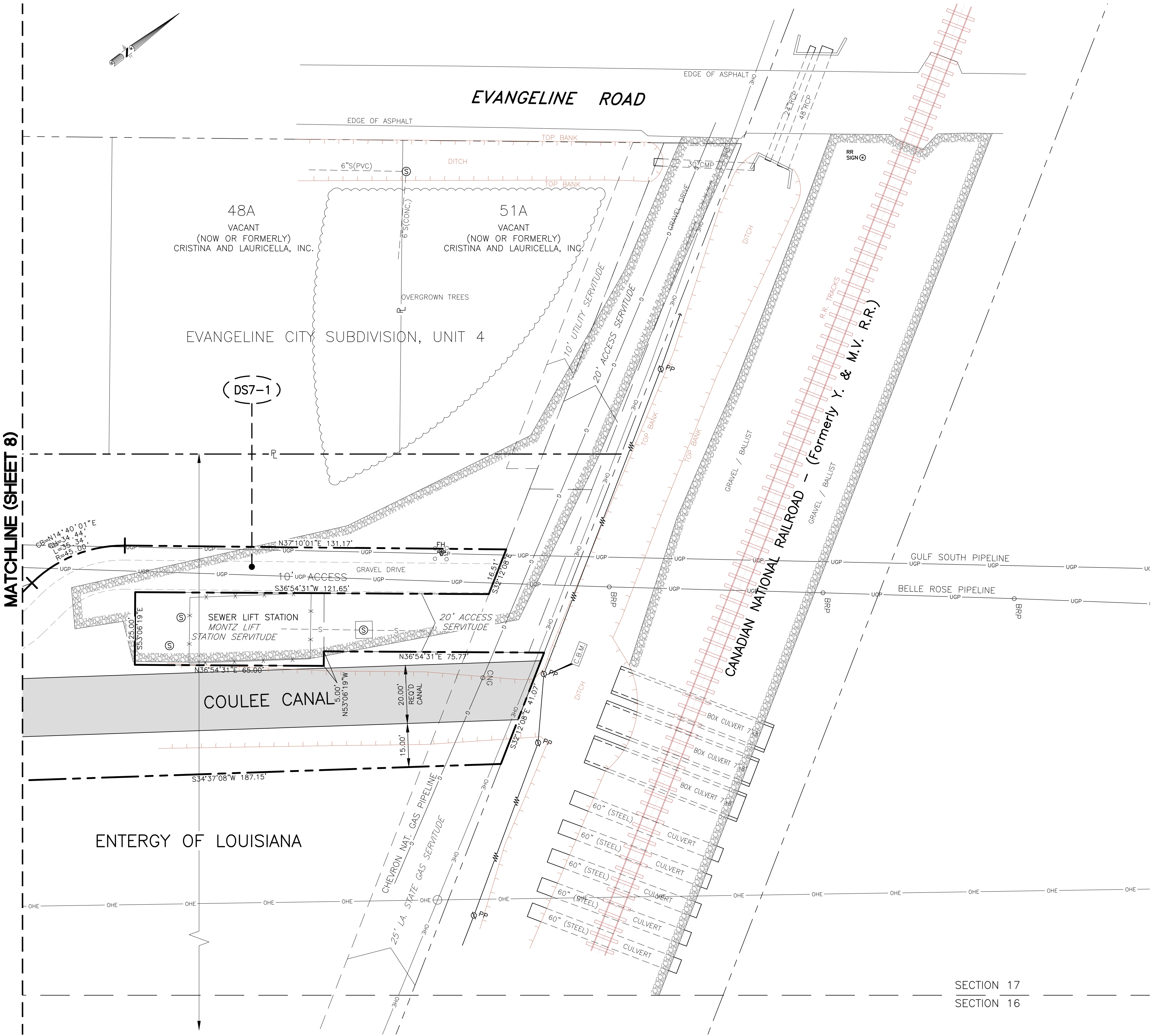
REQUIRED DRAINAGE SERVITUDES FOR
A PORTION OF COULEE CANAL
SECTIONS 6, 7, 17 & 42, T12S-R7E
TOWN OF MONTZ
ST. CHARLES PARISH, LA.



3445 N. CAUSEWAY BLVD., STE. 401, METAIRIE, LA. 70002 (504)838-6009

8/25/2015	REVISED DS4-1, DS5-1, DS11-2 and DS12-1	E.W.P.	SCALE: 1" = 20'	DRAWN BY: EWP
DATE	REVISION RECORD	DRAWN BY	DATE: 4/21/2015	CHECKED BY: CAM
			JOB NO. 413-2060106.004	SHEET NO. 13 OF 15

SECTION 17
T12S-R7E



DRAINAGE SERVITUDE

REQUIRED DRAINAGE SERVITUDES FOR
A PORTION OF COULEE CANAL
SECTIONS 6, 7, 17 & 42, T12S-R7E
TOWN OF MONTZ
ST. CHARLES PARISH, LA.



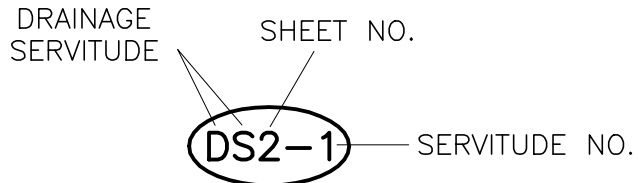
3445 N. CAUSEWAY BLVD., STE. 401, METAIRIE, LA. 70002 (504)838-6009

8/25/2015	REVISED DS4-1, DS5-1, DS11-2 and DS12-1	E.W.P.	SCALE: 1" = 20'	DRAWN BY: EWP
DATE	REVISION RECORD	DRAWN BY	DATE: 4/21/2015	CHECKED BY: CAM
			JOB NO. 413-2060106.004	SHEET NO. 14 OF 15

G:\DWG5\413\005\206016.004 Coulee Canal Improvements\DWG -- Revised 8--25--2015\Coulee Canal TABLE SHEET 15 -- Revised 8--25--15.dwg Aug 26, 2015 -- 8:38am

SHEET NO.	SERVITUDE NO.	PROPERTY OWNERS	PARENT TRACT DESIGNATION	RECORDATION INFORMATION	REQUIRED DRAINAGE SERVITUDE AREA	
					SQ. FT.	ACRES
2	DS2-1	SCOTT J. DUHE AND MARIE CONEGLIO DUHE	44A-1, EVANGELINE CITY SUBD., SQUARE 1, UNIT 3	COB 559, FOLIO 220, ENTRY # 236847 AND COB 757, FOLIO 622, ENTRY # 370431	44.94	0.001
	DS2-2	RENEE M. LABAT AND JUDE P. LABAT	LOT 48-A, EVANGELINE CITY SUBD., SQUARE 1, UNIT 3	COB 746, FOLIO 503, ENTRY # 362460	1,651.15	0.038
	DS2-3	YVONNE RENEE MONTZ CHESTER AND SARAH YVONNE CHESTER	LOT 53-A, EVANGELINE CITY SUBD., SQUARE 1, UNIT 3	COB 746, FOLIO 503, ENTRY # 362460	5,179.33	0.119
	DS2-4	YVONNE RENEE MONTZ CHESTER AND SARAH YVONNE CHESTER	LOT 60-A, EVANGELINE CITY SUBD., SQUARE 1, UNIT 3	COB 746, FOLIO 503, ENTRY # 362460	3,617.70	0.083
	DS2-5	TERRI MAURIN DUHE AND STEVEN E. DUHE	EVANGELINE CITY SUBD., SQUARE 3, UNIT 3	COB 252, FOLIO 673, ENTRY # 77466	7,064.73	0.162
	DS2-6	SHELLY LUKES BABINEAUX AND BLAINE A. BABINEAUX	LOTS 63, 64, 65 & 66, EVANGELINE CITY SUBD., SQUARE 3, UNIT 3	COB 460, FOLIO 744, ENTRY # 372760	6,890.02	0.158
	DS2-7	TERRILL J. DOWNEY AND MICHELLE CLIFTON DOWNEY	LOTS 67, 68 & 69, EVANGELINE CITY SUBD., SQUARE 3, UNIT 3	COB 634, FOLIO 234, ENTRY # 293272	2,932.59	0.067
	DS2-8	CHRISTINA & LAURICELLA, INC.	10' STRIP IN EVANGELINE CITY SUBD., SQ. 3, UNIT 3		994.14	0.023
3	DS3-1	DARLENE CEASER CARTER, ET AL		COB 760, FOLIO 361, ENTRY # 372133	189,559.16	4.352
4	DS4-1	UNKNOWN OWNER			16,966.61	0.389
5	DS5-1a	GREGORY C. THIBODEAUX & JILL IRENE BARKER	LOT B-1, DIXIELAND SUBD. EXTENSION WITH 1 FT. STRIP	COB 604, FOLIO 732, ENTRY No. 268439, (1 FT. STRIP QUITCLAIM DEED: COB 548, FOLIO 19)	2766.58	0.064
	DS5-1b	KELCEY J. SIMONEAUX, et ux	LOT A, DWIGHT CLEMENT SUBDIVISION	COB 533, FOLIO 143, ENTRY NO. 218268	1088.46	0.025
	DS5-2	MICHAEL T. MADERE, ET ALS	LOWER HALF OF LOT 1	COB 575, FOLIO 360, ENTRY No. 247336	3279.96	0.075
	DS5-3	GPBC, LLC	(1 ARPENT FRONT AT RIVER)	COB 777, FOLIO 371, ENTRY No. 382733	7564.35	0.174
	DS5-4	GPBC, LLC	UPPER PORTION OF LOT Y-2	COB 777, FOLIO 371, ENTRY No. 382733	2776.32	0.064
	DS5-5	GPBC, LLC	REAR PORTION OF LOT Y-1	COB 777, FOLIO 371, ENTRY No. 382733	945.32	0.022
	DS5-6	TIMOTHY PERILLOUX & LINDA C. PERILLOUX	LOWER PORTION OF LOT Y-2	COB 507, FOLIO 806, ENTRY No. 201687	4058.94	0.093
	DS5-7	TIMOTHY PERILLOUX	LOT 3	COB 193, FOLIO 156, ENTRY No. 56323	6683.14	0.153
6	DS6-1	COLEEN PERILLOUX LANDRY	(1 ARPENT FRONT AT RIVER)	COB 382, FOLIO 587, ENTRY No. 132779	6,770.63	0.155
	DS6-2	WAYNE A. BRADY, JR. AND MICHELLE K. BRADY	LOT 5D-3, BOBERCY PLANTATION	COB 733, FOLIO 835 ENTRY No. 354989 AND COB 733, FOLIO 839 ENTRY No. 354990	5,950.83	0.137
	DS6-3	SCOTT J. DUHE AND MARIE CONEGLIO DUHE	44A-1, EVANGELINE CITY SUBD., SQUARE 1, UNIT 3 / BOBERCY PLANTATION	COB 559, FOLIO 220, ENTRY No. 236847 AND COB 757, FOLIO 622, ENTRY No. 370431	1,880.97	0.043
	DS6-4	WAYNE A. BRADY, JR. AND MICHELLE K. BRADY	LOT 5D-4, BOBERCY PLANTATION	COB 733, FOLIO 835 ENTRY No. 354989 AND COB 733, FOLIO 839 ENTRY No. 354990	109.81	0.003
7, 8 & 14	DS7-1	ENTERGY OF LOUISIANA	-		73,827.41	1.695
9, 10, 11 & 12	DS9-1	LEON ST. GERMAINE, JR. AND JEANNE MARTIN ST. GERMAINE	-	COB 26, FOLIO 256, ENTRY No. 19967	53,760.96	1.234
11	DS11-1	GENE P. DUPLESSIS, ALCEE PAUL DUPLESSIS, SHERYL MARGARET DUPLESSIS WILSON, GARY JUDE DUPESSIS	(1/2 ARPENT FRONT AT RIVER)	COB 788, FOLIO 344, ENTRY No. 390223	7,667.71	0.176
	DS11-2	THREE 4 THREE, LLC	(1/2 ARPENT FRONT AT RIVER LESS SOLD PORTION)	COB 782, FOLIO 206, ENTRY No. 386084	5,481.03	0.126
	DS11-3	OT PROPERTIES, LLC	(1/2 ARPENT FRONT AT RIVER)	COB 691, FOLIO 408, ENTRY No. 331225	4,787.50	0.110
	DS11-4	ROBERT RAYMOND OUBRE & ANGELA WILDS OUBRE	TRACT 1A-1	COB 588, FOLIO 395, ENTRY No. 255742	13,350.16	0.306
	DS11-5	TERRY WAYNE PERILLOUX & DANA CANTILLO PERILLOUX	TRACT 1B-1-A	COB 592, FOLIO 525, ENTRY No. 258389	4,871.40	0.112
12	DS12-1	MARK R. DUCK AND CYNTHIA PINELL DUCK	LOT 79A, DIXIELAND SUBDIVISION EXTENSION	COB 566, FOLIO 266, ENTRY No. 241916	8,845.12	0.203
13	DS13-1	HENRY J. LaBRANCH	(1/2 ARPENT FRONT AT RIVER)	COB 143, FOLIO 65, ENTRY No. 44796	3,178.82	0.073
	DS13-2	HENRY J. LaBRANCH	(1 ARPENT FRONT AT RIVER ROAD)	COB 143, FOLIO 65, ENTRY No. 44796	8,890.89	0.204

TOTAL:	AREA	
	SQ. FT.	ACRES
DRAINAGE SERVITUDES	463,436.68	10.639



SURVEYED AT THE REQUEST OF: ST. CHARLES PARISH

THIS IS TO CERTIFY THAT THE PROPERTY BOUNDARY SURVEY RECORDED HEREON WAS MADE ON THE GROUND UNDER MY DIRECT SUPERVISION, AND IS IN ACCORDANCE WITH APPLICABLE STANDARDS OF PRACTICE FOR PROFESSIONAL LAND SURVEYORS AS STIPULATED IN LOUISIANA ADMINISTRATIVE CODE TITLE 46:LXI, CHAPTER 29 FOR A CLASS "D" SURVEY.

by: G.E.C., INC.

By: _____
John W. Starring, P.L.S.
La. Reg. No. 3585
Date: 8/25/2015

			SCALE: NO SCALE	DRAWN BY: EWP
8/25/2015	REVISED DS4-1, DS5-1, DS11-2 and DS12-1	E.W.P.	DATE: 4/21/2015	CHECKED BY: CAM
DATE	REVISION RECORD	DRAWN BY	JOB NO. 413-2060106.004	SHEET NO. 15 OF 15

OWNERSHIP / AREA TABLE

REQUIRED DRAINAGE SERVITUDES FOR
A PORTION OF COULEE CANAL
SECTIONS 6, 7, 17 & 42, T12S-R7E
TOWN OF MONTZ
ST. CHARLES PARISH, LA.



3445 N. CAUSEWAY BLVD., STE. 401, METAIRIE, LA. 70002 (504)838-6009