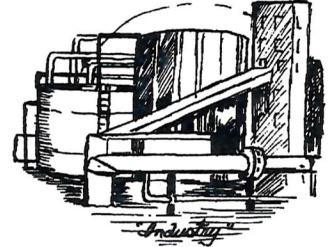
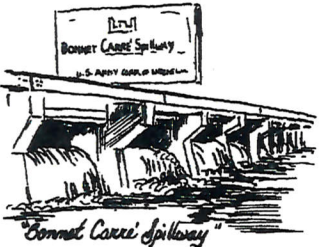
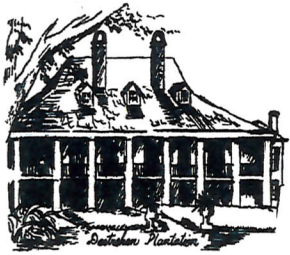


The Parish of St. Charles

March 7, 2016

*The St. Charles Parish Council
and the Parish President
Deeply Appreciate
Your Years of Service*

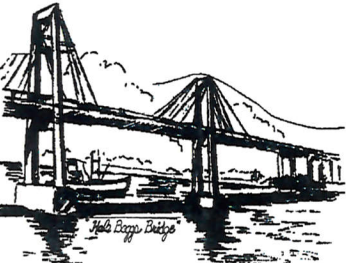


ZONING BOARD

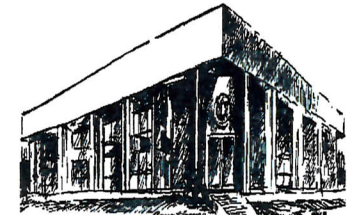
OF

ADJUSTMENT

December 7, 2009 – January 28, 2016




RICARDO SMITH



*"PARISH OF PLENTY"
created in 1807 from the county of the
"German Coast", a parish of
unprecedented economic and social
development, known for its
hospitality, rural living and sporting
opportunities... with the added
distinction of being located
on both sides of the
Mighty Mississippi River.*


LARRY COCHRAN
PARISH PRESIDENT


PAUL J. HOGAN, PE
COUNCILMAN AT LARGE, DIV. B


TERRELL D. WILSON
COUNCILMAN, DISTRICT I


MARY K. CLULEE
COUNCILWOMAN, DISTRICT II


DICK GIBBS
COUNCILMAN, DISTRICT III


WENDY BENEDETTO
COUNCILWOMAN AT LARGE, DIV. A


WILLIAM BILLY WOODRUFF
COUNCILMAN, DISTRICT IV


MARILYN B. BEYLOCK
COUNCILWOMAN, DISTRICT V


TRACI A. FLETCHER
COUNCILWOMAN, DISTRICT VI


JULIA FISHER-PERRIER
COUNCILWOMAN, DISTRICT VII