



St. Charles Parish
LIBRARY

Our mission is to empower our community to explore, learn, create, and connect.

**Annual report to the Parish Council
April 10, 2023**

The St. Charles Parish Library Team

- ▶ 75 Team Members
 - ▶ 48 full-time
 - ▶ 27 part-time
- ▶ 9 Full-Time Professional Librarians who hold a Masters Degree in Library and Information Science
- ▶ Director holds Executive Certificate from the State Board of Library Examiners

East Regional Library

160 W. Campus Drive

985-764-2366

Mon - Thu: 9am - 8pm

Fri - Sat: 9am - 5pm



St. Rose Branch

90 East Club Drive

504-465-0646

Mon: 10am - 8pm

Tue - Thu: 10am - 6pm

Fri: 9am - 5pm

Sat: 10am - 2pm



Norco Branch

590 Apple Street

985-764-6581

Mon: 10am - 8pm

Tue - Thu: 10am - 6pm

Fri: 9am - 5pm

Sat: 10am - 2pm



West Regional Library Bookmobile, & Planetarium

105 Lakewood Drive

985-785-8471

Mon - Thu: 9am - 8pm

Fri - Sat: 9am - 5pm



Paradis Branch

307 Audubon Street

985-758-1868

Mon: 10am - 8pm

Tue - Thu: 10am - 6pm

Fri: 9am - 5pm

Sat: 10am - 2pm



Hahnville Branch

14996 River Road

985-783-2341

Mon - Fri: 9am - 5pm



Services Available at All Branches

- ▶ Items Available for Checkout
 - ▶ Fiction & Non-Fiction Books
 - ▶ Magazines
 - ▶ Audiobooks
 - ▶ DVD's
 - ▶ Launchpads (pre-loaded learning tablets)
 - ▶ Hotspots
- ▶ Free WiFi (available in the parking lots 24/7)
- ▶ Free access to public computers (Internet, Microsoft Office)
- ▶ Photocopies and Computer Prints (\$.10 B&W / \$.25 Color)
- ▶ Study Rooms (first come first serve - 2-hour limit if there is a waitlist)
- ▶ Meeting Rooms (by reservation)

Digital Resources

- ▶ OverDrive (Libby app)
 - ▶ eBooks and Audiobooks
- ▶ Hoopla
 - ▶ eBooks, Audiobooks, Comic Books, Magazines, Music, Movies, & TV Shows
- ▶ Flipster
 - ▶ Magazines
- ▶ New York Times Online
- ▶ Databases covering a wide variety of topics including business, history, consumer guides, food and recipes, genealogy, health job resources, language learning, test preparation, and more
- ▶ HomeworkLA.org - free online tutoring and homework help

Planetarium

- ▶ Located at the West Regional Library in Luling
- ▶ Free Public Shows
 - ▶ Tuesdays & Thursdays: 6:30pm
 - ▶ Saturday Children's Matinee: 10am & 11:30am
 - ▶ Saturday Afternoon Matinee: 2pm & 3:30pm
- ▶ Groups Showings Available
 - ▶ School field trips, Girl Scout and Boy Scout troops, senior citizen groups, and other community organizations
 - ▶ Free for St. Charles Parish organizations and residents
 - ▶ \$2.00 per person for groups from outside St. Charles Parish
 - ▶ Can seat groups with up to 42 attendees (larger groups can be split across multiple show times)
 - ▶ Contact Jason Talley, Planetarium Supervisor, at 985-785-8471 to schedule group shows or visit <https://www.myscpl.org/visit/planetarium>



Planetarium was closed until March 3, 2022 due to Hurricane Ida. 1,474 patrons visited the planetarium in 2022

Bookmobile

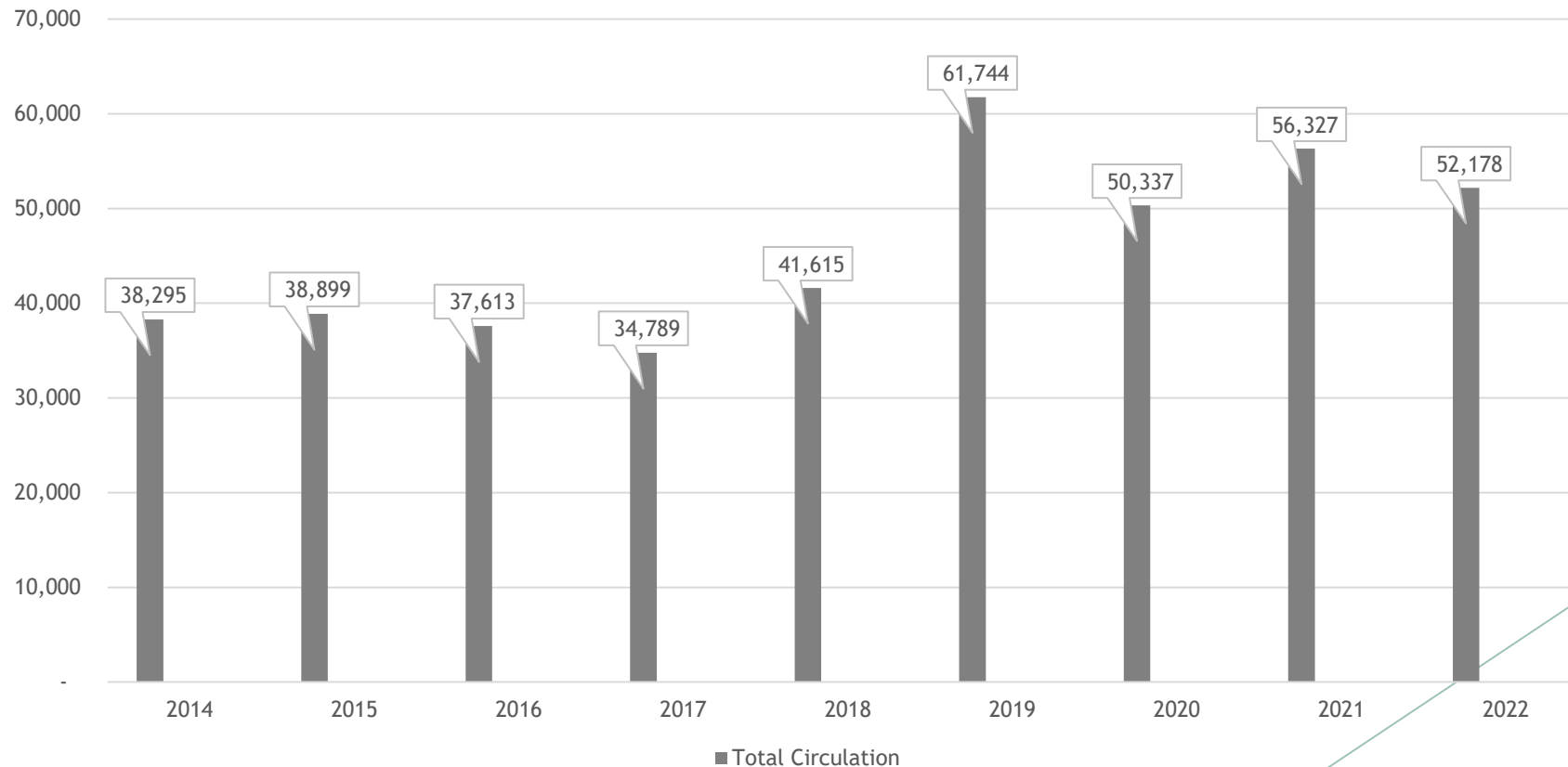
- ▶ Mobile library delivering library materials to senior centers, daycares, and individual homes
- ▶ Service hours are between 9:00am and 5:00pm, Monday through Friday.
- ▶ Criteria used to select stops:
 - ▶ Within St. Charles Parish and eligible for a library card
 - ▶ Homebound patrons with physical or medical limitations that prevent them from visiting a local branch, daycares, and senior centers (highest priority)
 - ▶ More than 3 miles from an existing branch
 - ▶ Easily integrated into existing schedule
 - ▶ Enough room to maneuver and park on a level, solid parking area
 - ▶ Safe access for patrons
- ▶ Patrons can request bookmobile service by contacting Claire Cermak, Circulation Supervisor at the West Regional Library, at 985-785-8471



Bookmobile Circulation Statistics

- ▶ 52,178 items delivered to 3,297 patrons in 2022
- ▶ Approximately 31% of physical items circulated system-wide in 2022 were delivered through the bookmobile service

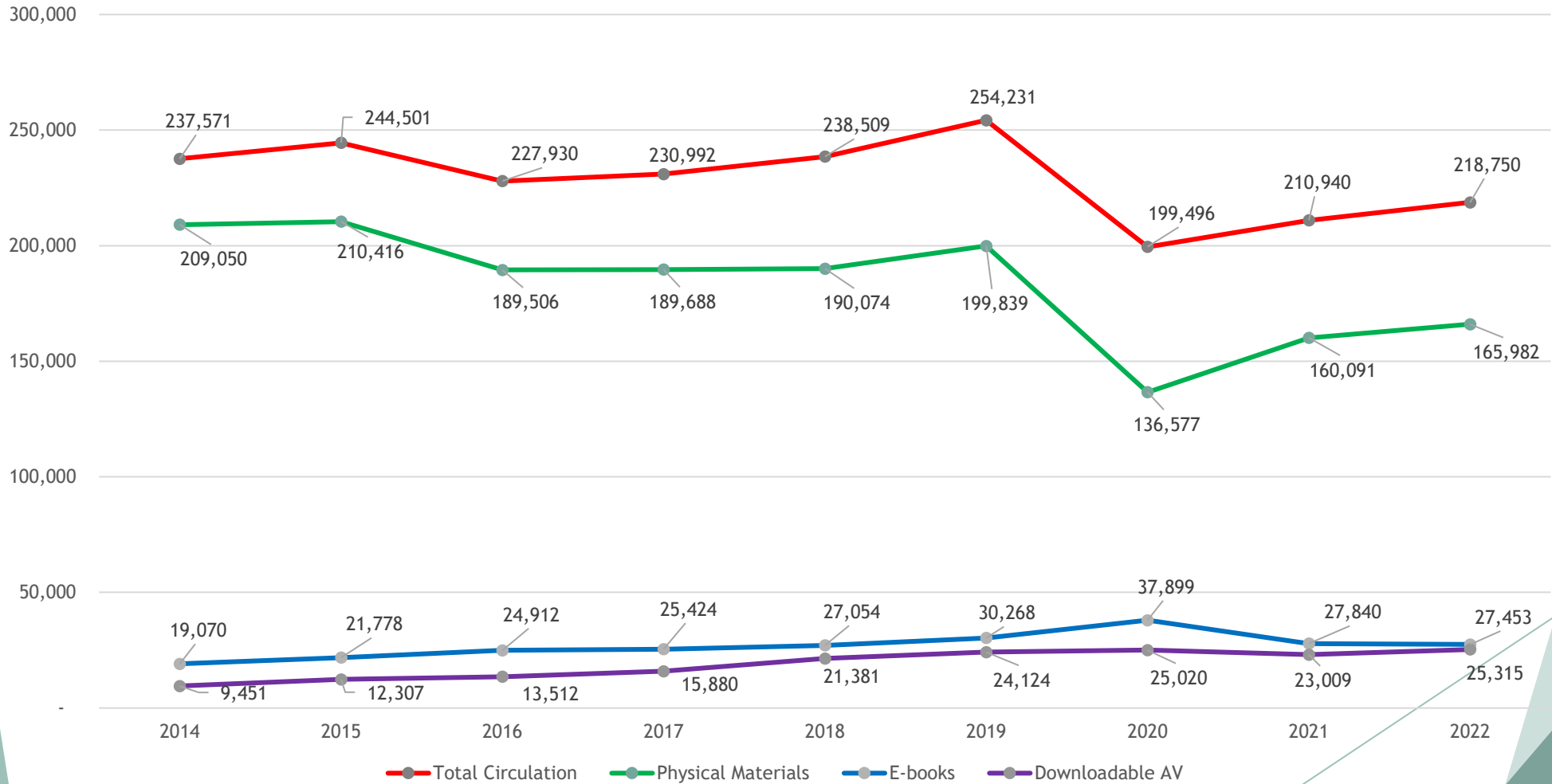
Bookmobile Circulation Statistics



The Year in Numbers

January 1 - December 31, 2022

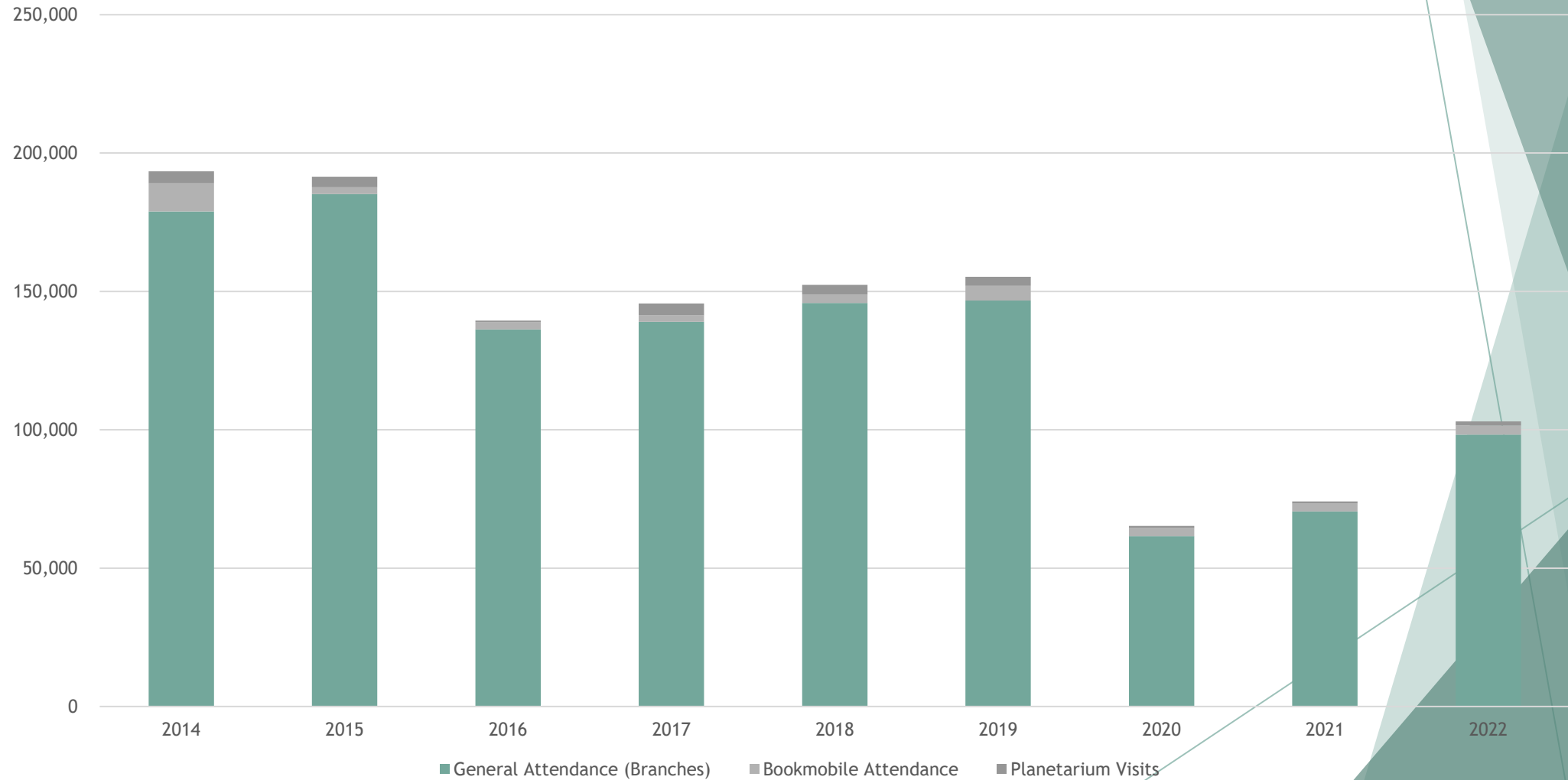
System-Wide Circulation Statistics



The Year in Numbers

January 1 - December 31, 2022

Number of Visits to Library Branches



The Year in Numbers

Programming and Outreach

January 1 - December 31, 2022

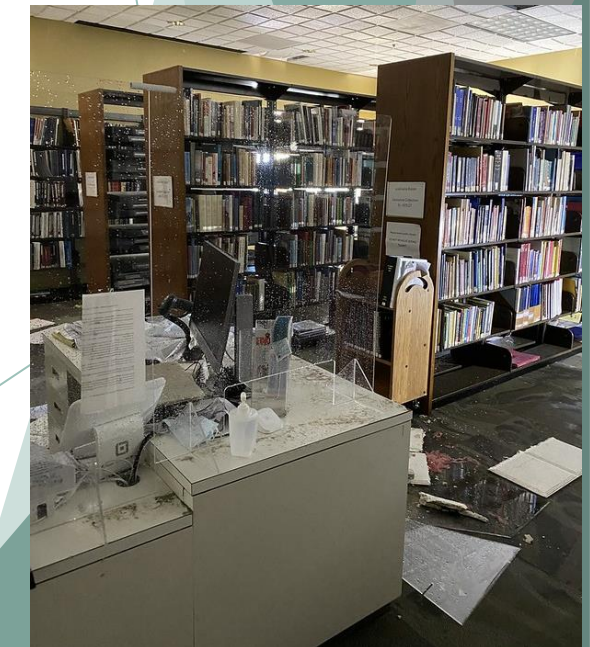
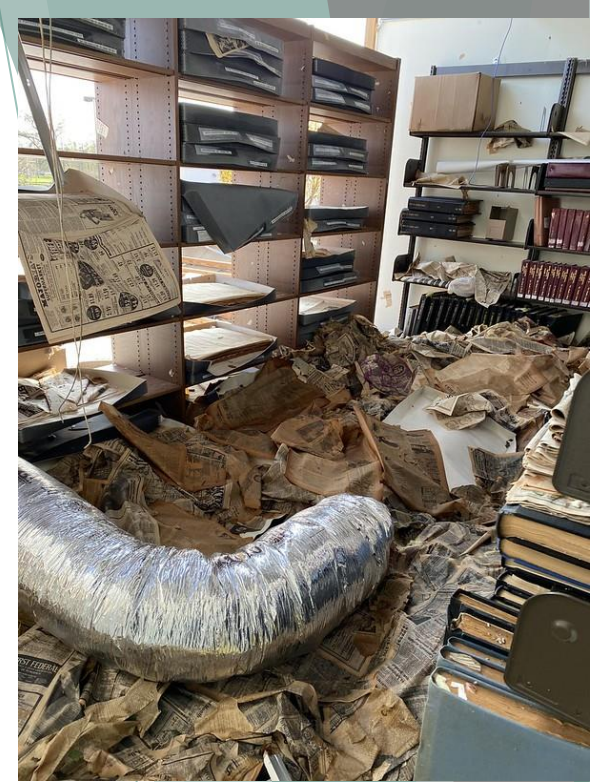
- ▶ 1,095 In-Person Onsite Programs with 15,137 attendees
- ▶ 179 In-Person Offsite (Outreach) Programs with 9,974 attendees
 - ▶ Schools and Daycares
 - ▶ Senior Centers
 - ▶ Farmer's Market
 - ▶ Community Centers
 - ▶ Local Community Events
- ▶ 27 Live Virtual Programs with 149 attendees
- ▶ 7 Recorded Virtual Programs with 687 views





Hurricane Ida - The Road to Recovery

- ▶ Repairs have been completed at all branches except for the East and West Regional Libraries
 - ▶ Roof over the children's area at East Regional Library is in the process of being repaired
 - ▶ West Regional Library repairs are well underway. Anticipate completion by mid to late summer
 - ▶ Restored Louisiana Room Collection - Now Located at the Hahnville Branch Library
 - ▶ Circulating materials available for browsing
 - ▶ Reference materials available upon request



A Look Forward

- ▶ Continued Hurricane Recovery
- ▶ Summer Reading Program - *All Together Now* - June 1 - July 31, 2023
- ▶ Plans for a new Hahnville Branch
- ▶ Continue expanding and growing services to meet the needs of our community:
 - ▶ Internet and computer access
 - ▶ Programming for all ages
 - ▶ Community outreach services
 - ▶ Access to downloadable ebooks, audiobooks, and other electronic resources
- ▶ Make necessary upgrades and improvements to existing branches

Find Out What's Happening at Your Library



Website - www.myscpl.org



Download our app



<https://www.facebook.com/StCharlesLib/>

<https://www.facebook.com/SCPL.Planetarium/>



Instagram

<https://www.instagram.com/stcharleslib/>



twitter

<https://www.twitter.com/StCharlesLib>



<https://www.tiktok.com/@stcharleslib>

Monthly Newsletter



Thank you to the parish council for your support this past year! We invite you to stop in and visit us at any of our 6 locations or visit our website to access our many digital resources.

Questions?

Leann Benedict, MLIS
Library Director
985-764-9643
leann.benedict@myscpl.org

