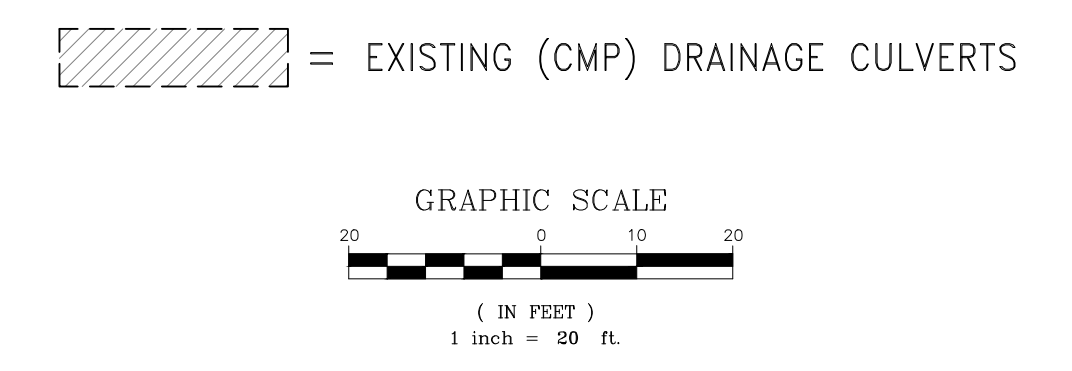
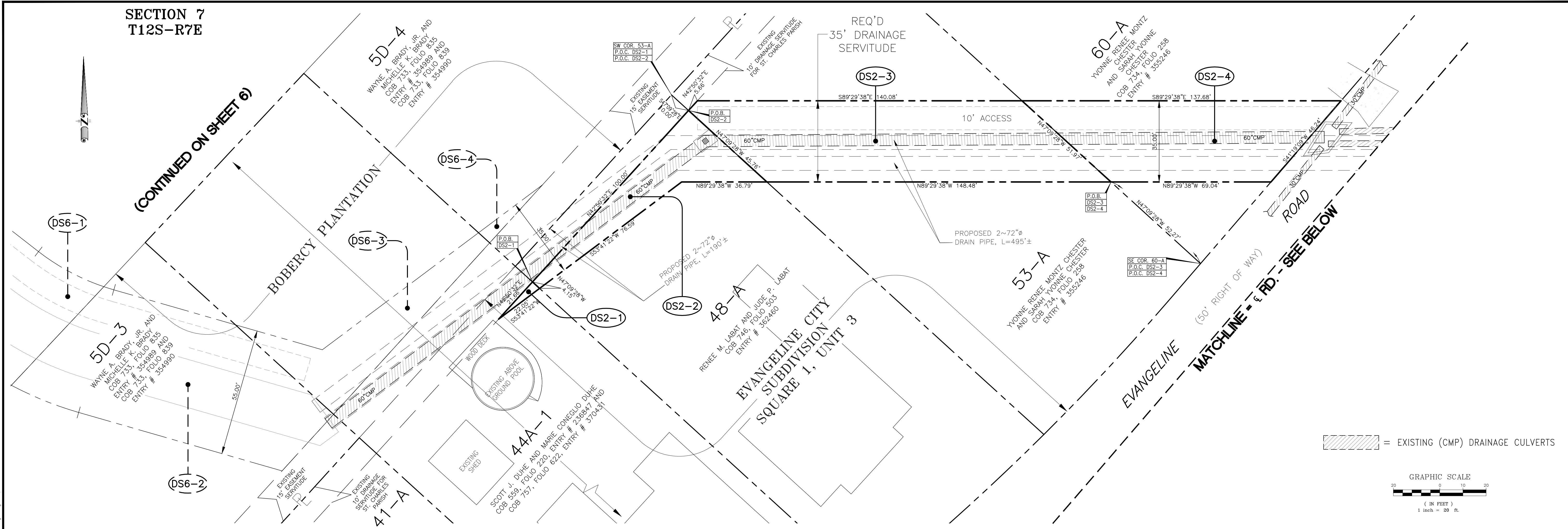
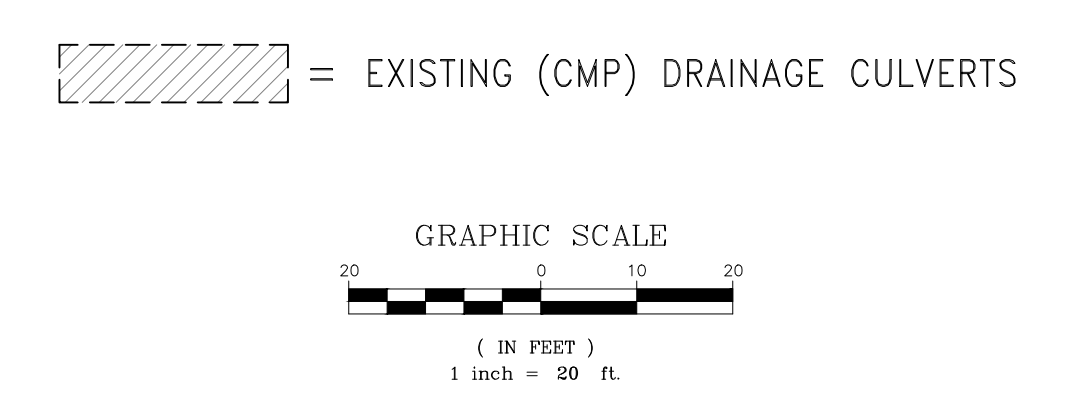
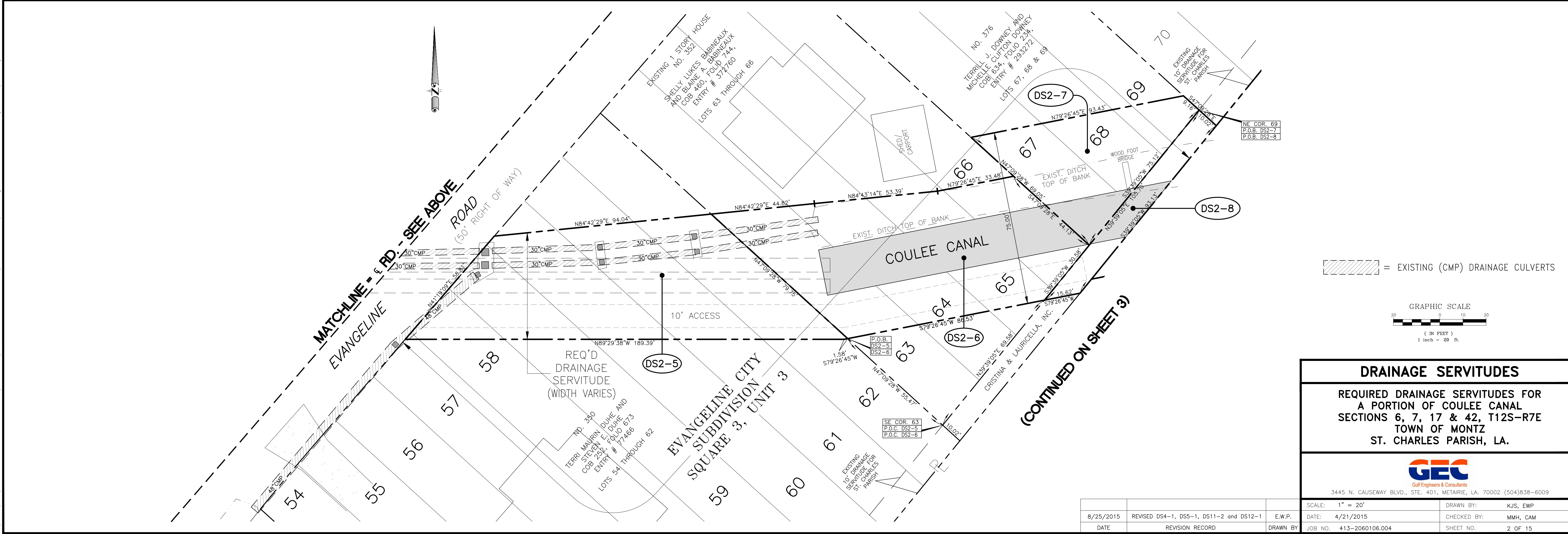


SECTION 7  
T12S-R7E

(CONTINUED ON SHEET 6)



MATCHLINE - RD - SEE ABOVE



**DRAINAGE SERVITUDES**

REQUIRED DRAINAGE SERVITUDES FOR  
A PORTION OF COULEE CANAL  
SECTIONS 6, 7, 17 & 42, T12S-R7E  
TOWN OF MONTZ  
ST. CHARLES PARISH, LA.

**GEC**  
Gulf Engineers & Consultants  
3445 N. CAUSEWAY BLVD., STE. 401, METAIRIE, LA. 70002 (504)838-6009

8/25/2015	REVISED DS4-1, DS5-1, DS11-2 and DS12-1	E.W.P.	SCALE: 1" = 20'
DATE	REVISION RECORD	DRAWN BY	CHECKED BY: MMH, CAM
			JOB NO. 413-206106.004
			SHEET NO. 2 OF 15

G:\DWG\5413\0051206106.004\_Coulee\_Canal\_Improvements\DWG - Revised 8-25-2015\Coulee\_Canal\_Req'd\_Drainage\_Servitudes\_with\_Geometry\_and\_Topo\_Survey - Revised 8-25-15.dwg Aug 26, 2015 - 8:29am