



St. Charles Parish LIBRARY

Our mission is to empower our community
to explore, learn, create, and connect.

Annual report to the Parish Council
May 20, 2024

Leann Benedict, MLIS
Library Director

East Regional Library

160 W. Campus Drive

985-764-2366

Mon - Thu: 9am - 8pm

Fri - Sat: 9am - 5pm



St. Rose Branch

90 East Club Drive

504-465-0646

Mon: 10am - 8pm

Tue - Thu: 10am - 6pm

Fri: 9am - 5pm

Sat: 10am - 2pm



Norco Branch

590 Apple Street

985-764-6581

Mon: 10am - 8pm

Tue - Thu: 10am - 6pm

Fri: 9am - 5pm

Sat: 10am - 2pm



West Regional Library Bookmobile, & Planetarium

105 Lakewood Drive

985-785-8471

Mon - Thu: 9am - 8pm

Fri - Sat: 9am - 5pm



Paradis Branch

307 Audubon Street

985-758-1868

Mon: 10am - 8pm

Tue - Thu: 10am - 6pm

Fri: 9am - 5pm

Sat: 10am - 2pm



Hahnville Branch

14996 River Road

985-783-2341

Mon - Fri: 9am - 5pm



The St. Charles Parish Library Team

- ▶ 84 Team Members
 - ▶ 51 full-time
 - ▶ 33 part-time
- ▶ 9 Full-Time Professional Librarians who hold a Masters Degree in Library and Information Science
- ▶ Director holds Executive Certificate from the State Board of Library Examiners
- ▶ 3 staff currently have a Library Support Staff Certification and four staff members are currently enrolled in the program and working towards gaining their LSSC

Library Cards

Library cards are free to anyone who lives, works, goes to school, or owns property in St. Charles Parish

- ▶ 39,214 registered borrowers
- ▶ 1,191 new library cards distributed in 2023
- ▶ Non-resident cards available for \$25/year

Services Available at All Branches

- ▶ 188,509 items available for checkout in our libraries including:
 - ▶ Fiction & Non-Fiction Books
 - ▶ Magazines
 - ▶ Audiobooks and DVDs
 - ▶ Launchpads (pre-loaded learning tablets)
 - ▶ WiFi Hotspots

20,895 new items added to the collection in 2023

- ▶ WiFi (available in the parking lots 24/7)
- ▶ Access to public computers (Internet, Microsoft Office)
- ▶ Photocopies and Computer Prints
- ▶ Study Rooms (first come first serve - 2-hour limit if there is a waitlist)
- ▶ Meeting Rooms (by reservation)
- ▶ Programs for All Ages

Digital Resources

94,248 Digital Items Available for Checkout

- ▶ OverDrive (Libby app) - eBooks and Audiobooks
- ▶ Hoopla - eBooks, Audiobooks, Comic Books, Magazines, Music, Movies, & TV Shows
- ▶ Flipster - Magazines
- ▶ New York Times Online
- ▶ Databases covering a wide variety of topics including business, history, consumer guides, food and recipes, genealogy, health job resources, language learning, test preparation, and more
- ▶ HomeworkLA.org - free online tutoring and homework help

Planetarium

- ▶ Located at the West Regional Library in Luling
- ▶ Free Public Shows
 - ▶ Tuesdays & Thursdays: 6:30pm
 - ▶ Saturday Children's Matinee: 10am
 - ▶ Saturday Afternoon Matinee: 2pm
- ▶ Groups Showings Available
 - ▶ School field trips, Girl Scout and Boy Scout troops, senior citizen groups, and other community organizations
 - ▶ No charge for St. Charles Parish organizations and residents
 - ▶ \$2.00 per person for groups from outside St. Charles Parish
 - ▶ Can seat groups with up to 42 attendees (larger groups can be split across multiple show times)
 - ▶ Contact Jason Talley, Planetarium Supervisor, at 985-785-8471 to schedule group shows or visit <https://www.myscpl.org/visit/planetarium>



**2,192 patrons
visited the
Planetarium
in 2023**

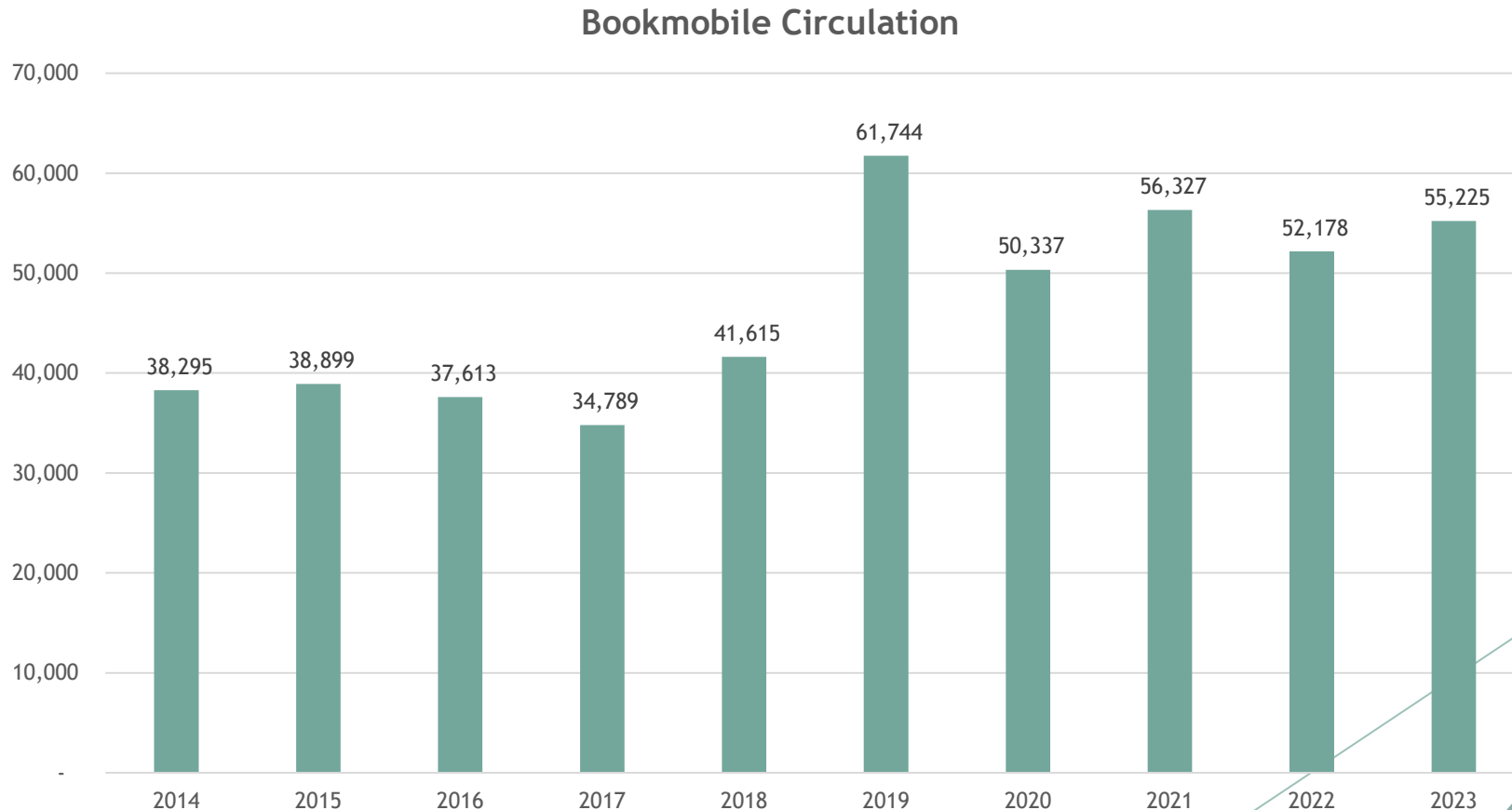
Bookmobile

- ▶ Mobile library delivering library materials to senior centers, daycares, and individual homes
- ▶ Service hours are between 9:00am and 5:00pm, Monday through Friday.
- ▶ Criteria used to select stops:
 - ▶ Within St. Charles Parish and eligible for a library card
 - ▶ Homebound patrons with physical or medical limitations that prevent them from visiting a local branch, daycares, and senior centers (highest priority)
 - ▶ More than 3 miles from an existing branch
 - ▶ Easily integrated into existing schedule
 - ▶ Enough room to maneuver and park on a level, solid parking area
 - ▶ Safe access for patrons
- ▶ Patrons can request bookmobile service by contacting Claire Cermak, Circulation Supervisor at the West Regional Library, at 985-785-8471

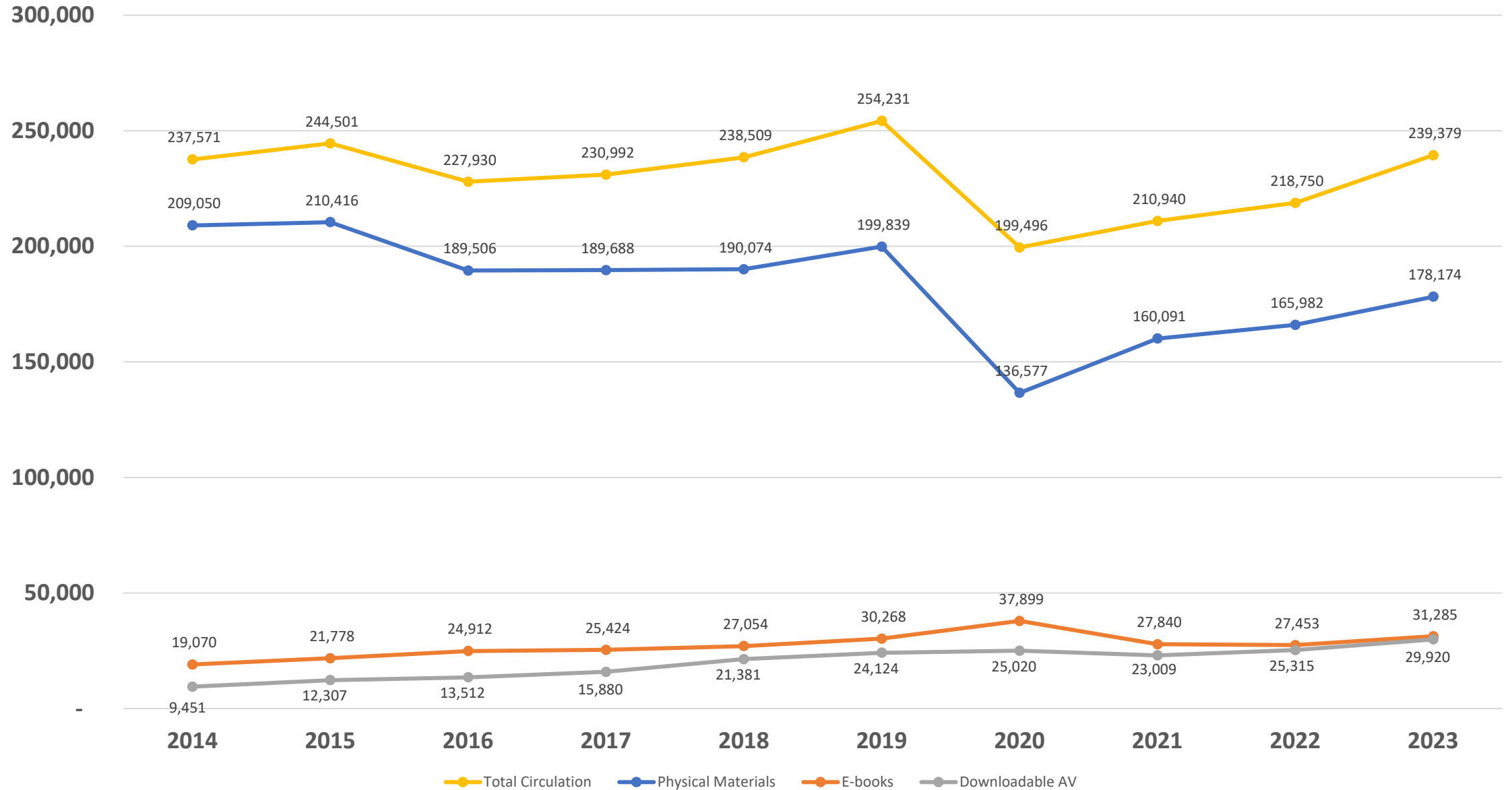


Bookmobile Circulation Statistics

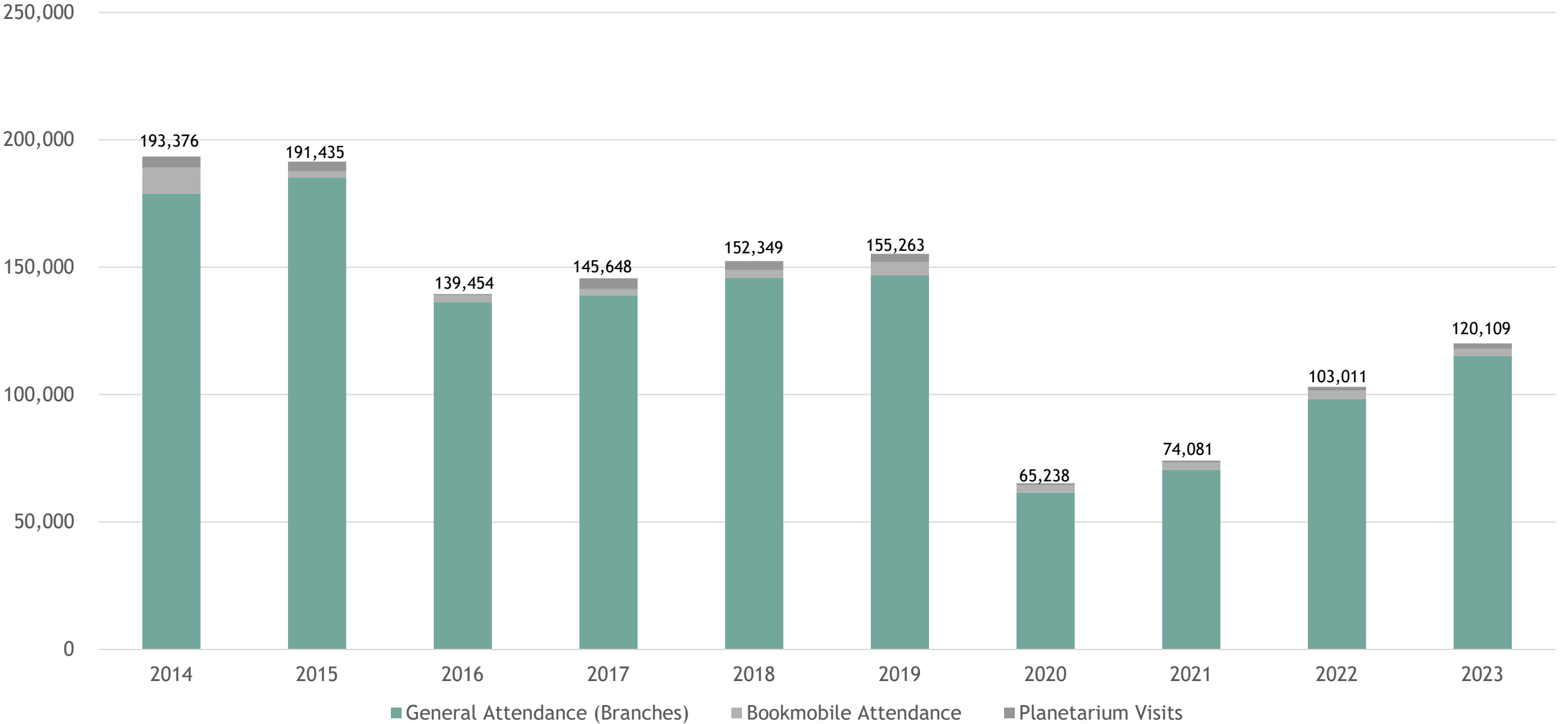
- ▶ 55,225 items delivered to 2,928 patrons in 2023
- ▶ Approximately 31% of physical items circulated system-wide in 2023 were delivered through the bookmobile service



Circulation Statistics



Patron Visits



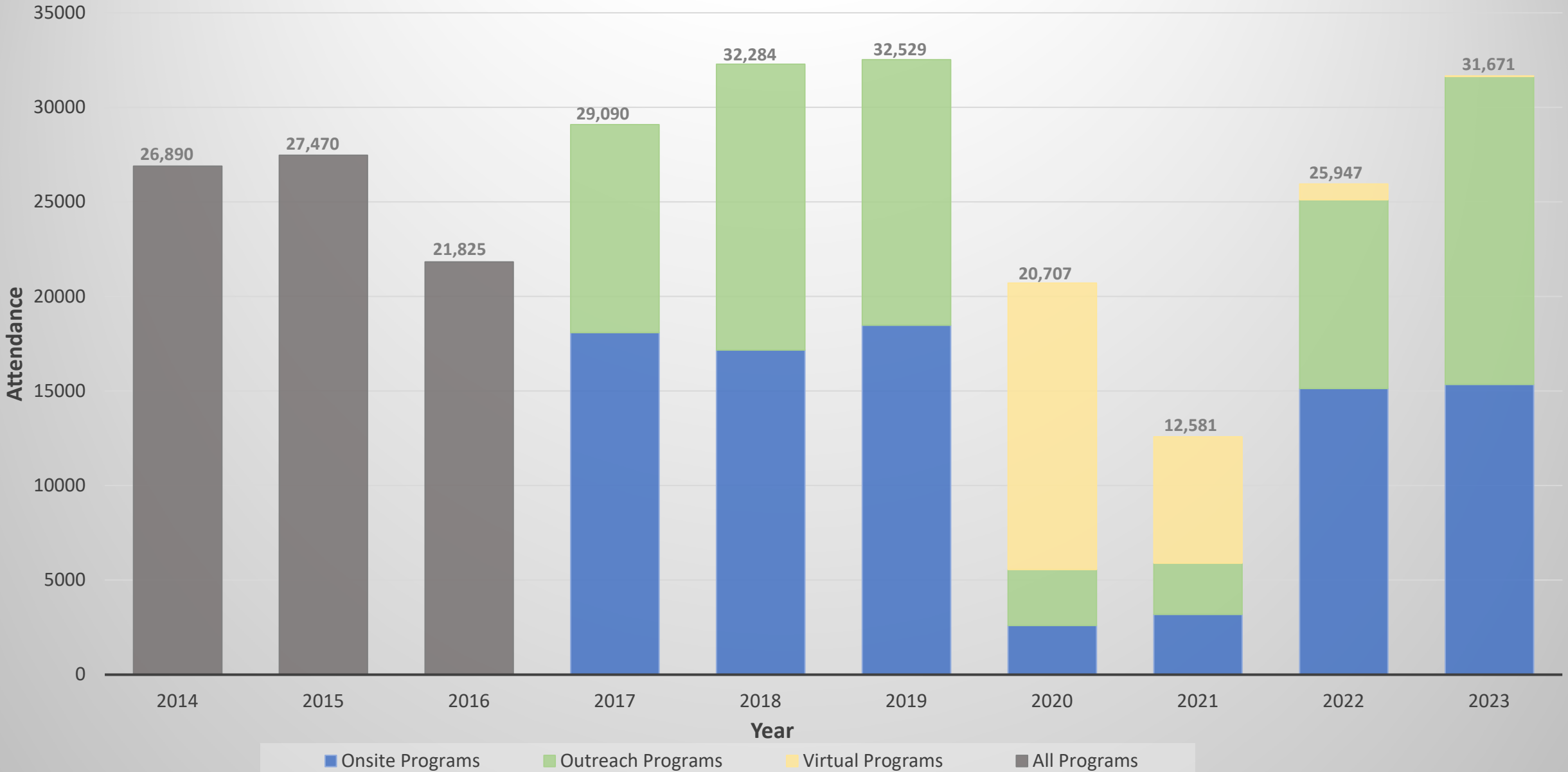
Programming and Outreach

January 1 - December 31, 2023

- ▶ 1,138 Onsite Programs with 15,350 attendees
- ▶ 261 Offsite (Outreach) Programs with 16,280 attendees
 - ▶ Schools and Daycares
 - ▶ Senior Centers
 - ▶ Farmer's Market
 - ▶ Community Centers
 - ▶ Local Community Events
- ▶ 26% increase in program attendance from previous year

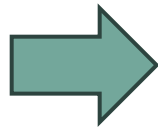
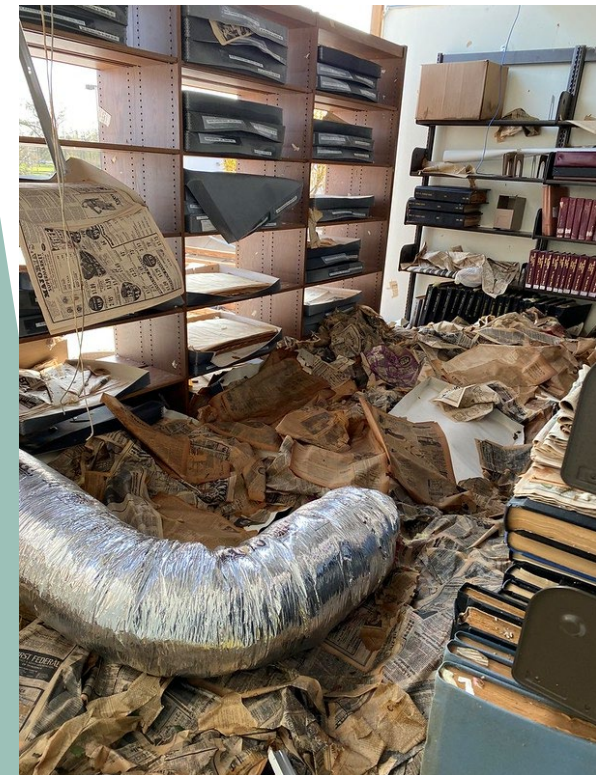


Program Attendance



Hurricane Ida Recovery

- ▶ Repairs have been completed at the West Regional Library with the exception of some punch list items. All parts of the library are now open to the public, including the meeting room.



A Look Forward - New Hahnville Branch



2024 Summer Reading Program

Sign up now at www.myscpl.org/summer



Read for 360 minutes to be eligible to win a grand prize, provided by the *Friends of the St. Charles Library!*

Sign up prizes and completion prizes for everyone!

Programs and fun for all ages, all summer long!!

Find Out What's Happening at Your Library



Website - www.myscpl.org



Download our app



<https://www.facebook.com/StCharlesLib/>

<https://www.facebook.com/SCPL.Planetarium/>



Instagram

<https://www.instagram.com/stcharleslib/>



twitter

<https://www.twitter.com/StCharlesLib>



<https://www.tiktok.com/@stcharleslib>

Monthly Newsletter



Thank you to the parish council for your support this past year! We invite you to stop in and visit us at any of our 6 locations or visit our website to access our many digital resources.

Questions?

Leann Benedict, MLIS
Library Director
985-764-9643, x103
leann.benedict@muscpl.org

