



VICINITY MAP
SCALE: 1" = 2000'

Approved/Disapproved

Director of Planning & Zoning

DATE

Approved/Disapproved

Parish President

DATE

Recorded in The Clerk of Court's office

St. Charles Parish on the ____ day of

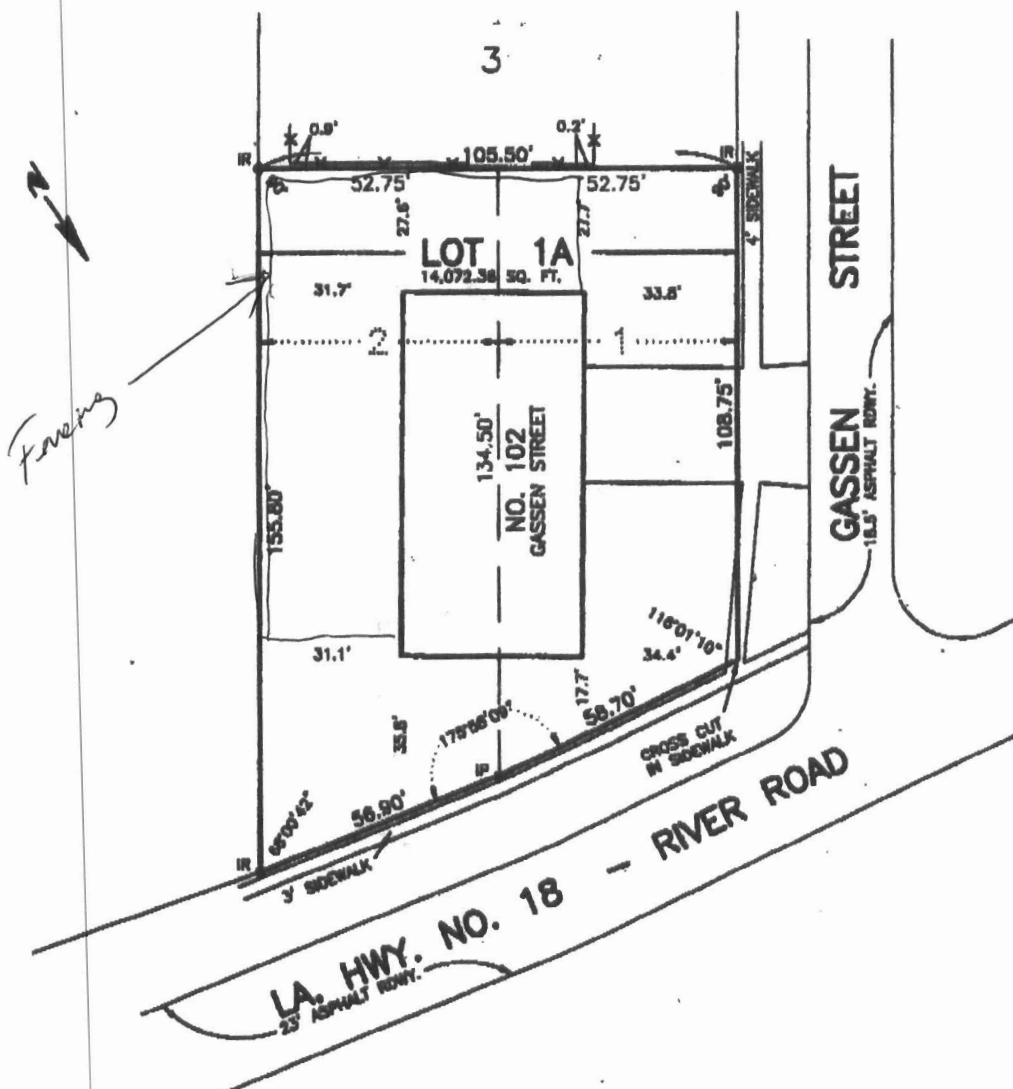
____, in Book ____

Folio ____ Entry # ____

Signature

Title

LULING AVENUE Side



RESUBDIVISION OF LOTS 1 & 2, BLOCK 1
GASSEN SUBDIVISION
INTO LOT 1A
IN SECTIONS 9 & 10, T13S - R21E
ST. CHARLES PARISH, LOUISIANA
SCALE: 1" = 2000'

LEGEND

● = IRON FOUND

○ = IR SET

ANGLES ARE ACCORDING TO
ORIGINAL SUBDIVISION PLAN