

**STATE OF LOUISIANA
DEPARTMENT OF TRANSPORTATION AND DEVELOPMENT**

Amendment NO. 1

to

Joint-Use Agreement No. 44 – ST. Charles Parish Animal Control Expansion in Luling

This Amendment to Joint Use Agreement 44 (the "Agreement") is made and entered into on the 12th day of July, 2005, by and between the Department of Transportation and Development ("DOTD") and St. Charles Parish ("the Parish") to authorize the removal of the present facility (to be replaced by a parking lot and a fenced-in dog run), and the construction of a new and larger facility on an adjacent piece of property.

The Parish represents that it is presently in compliance with all commitments, representations and warranties on its part under the Agreement and that during and after the construction and installation of the new facility, it will remain in compliance with all commitments, representations and warranties on its part hereunder.

Except as supplemented hereinabove, the Agreement is hereby ratified by the parties, and its terms and conditions shall remain in effect.

IN WITNESS WHEREOF, this Amendment has been executed in two (2) copies by the parties hereto as of the date herein first above written.

St. Charles Parish

ATTEST:

Michelle Jacob Tucker

Valarie Berthelet

BY:

Albert D. Laque

Albert D. Laque

Typed or Printed Name

ATTEST:

Dannyaale Young

Betty Huff

DEPARTMENT OF TRANSPORTATION
AND DEVELOPMENT

BY:

SA Wimmer

Scott A. Wimmer, P.E.
Access Management Engineer

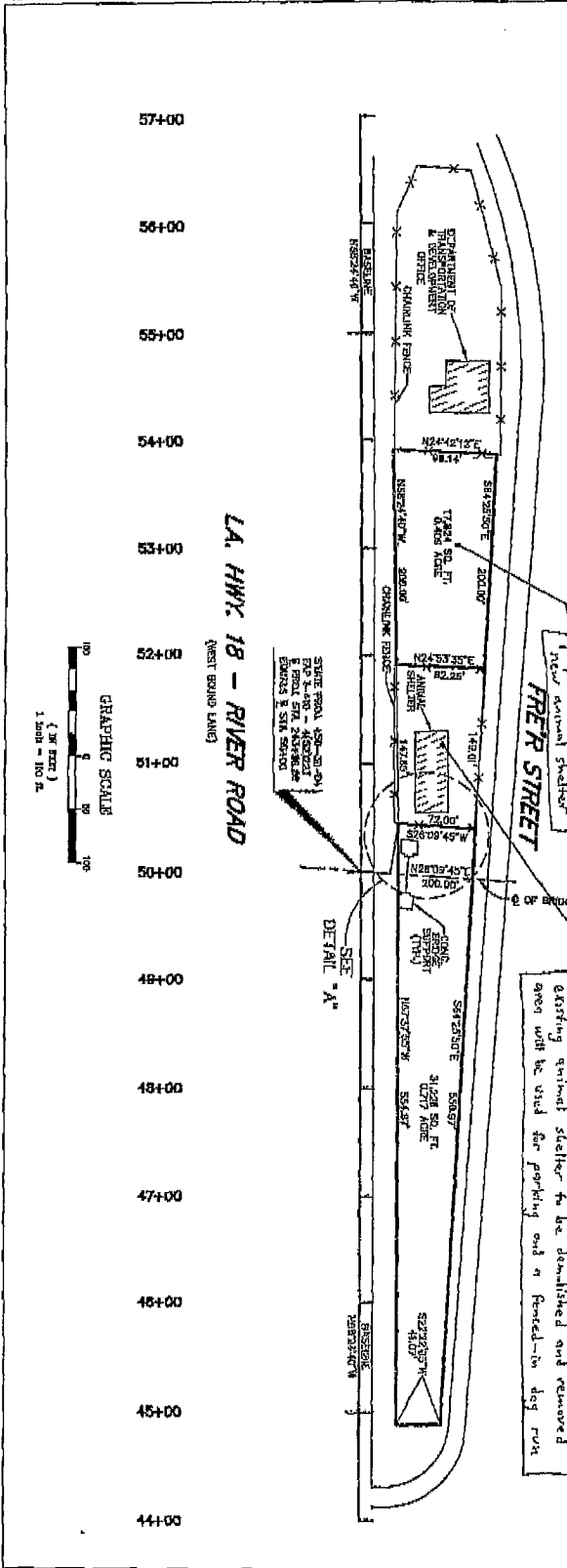
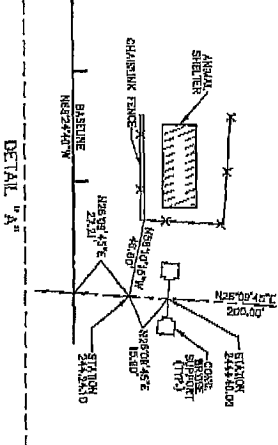
5/24/2005

DATE

APPROVED BY:

FEDERAL HIGHWAY ADMINISTRATION

DATE



GENERAL NOTES

THE LOCATIONS OF UNDERGROUND AND OTHER NONVISIBLE UTILITIES SHOWN HEREON HAVE BEEN DETERMINED FROM DATA EITHER FURNISHED BY THE AGENCIES CONTROLLING SUCH DATA AND/OR EXTRACTED FROM RECORDS MADE AVAILABLE TO US BY THE AGENCIES CONTROLLING SUCH RECORDS. WHERE FOUND, THE SURFACE FEATURES OF LOCATIONS ARE SHOWN. THE ACTUAL NONVISIBLE LOCATIONS MAY VARY FROM THOSE SHOWN HEREON. EACH AGENCY RESPONSIBLE FOR CONTROLLING RELIABLE DATA SHOULD BE CONTACTED BY THE UNDERGROUND UTILITIES DIVISION OF THE MISSISSIPPI DEPARTMENT OF TRANSPORTATION AND HIGHWAYS TO VERIFY THE ACCURACY OF SUCH LOCATIONS SHOWN HEREON, INCLUDING PRIOR TO EXCAVATION AND DIGGING.

SCALE: 1" = 100'

DATE: MARCH 7, 2005

DRAWN BY: S.P.H. CHECKED BY: K.A.E.

DRAWING NO: B-4021-2005 PROJ. NO: 4561

SHEET 1 OF 1

No BASE FLD. ELEV.

MAP OF PROPOSED SITE OF ST. CHARLES PARISH ANIMAL CONTROL FACILITY IN SECTIONS 7 & 8, T13S-R21E LULUNG, ST. CHARLES PARISH, LOUISIANA

ST. CHARLES PARISH, DEPARTMENT OF ANIMAL CO.

BTGM CORPORATION, L.L.C.
 Professional Land Surveyors
 534 WILLIAMS BOULEVARD
 E-mail: btg@btgm.com
 (504) 483-6600
 Fax: (504) 483-0055
 4875 BAYVIEW TERRACE, SUITE 200
 METairie, LOUISIANA 70002

Professional Seal of **DAVID S. THEODORE**
 License No. 4561
 State of Louisiana
 Registered Professional Land Surveyor