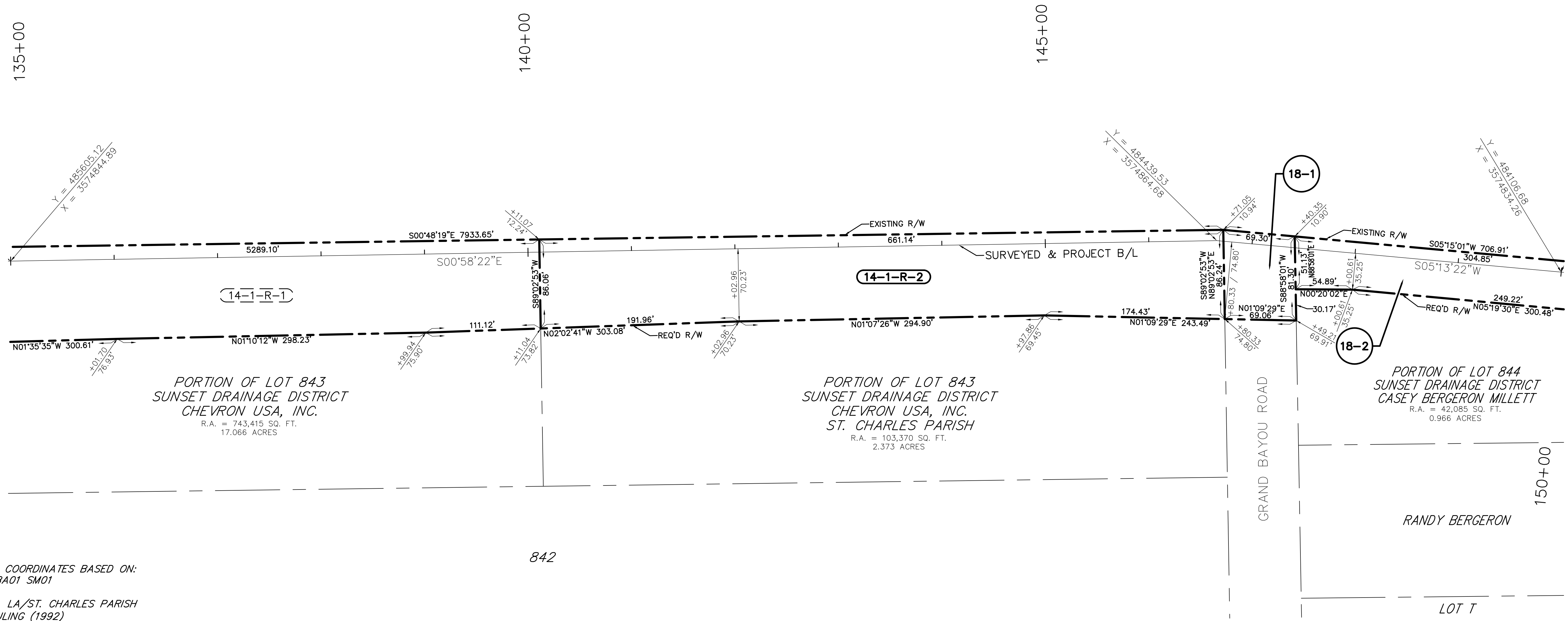
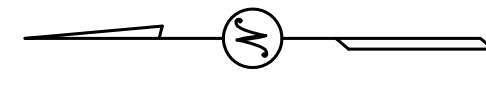


SOUTHEASTERN LAND DISTRICT
WEST OF THE MISSISSIPPI RIVER
T 14 S - R 20 E
SECTION 26



S:\Land Projects R2\LDwgs\11553\11553_W02206_RSC_ROW.dwg 10/7/2015 11:27:10 AM CDT

PORTION OF LOT 843
SUNSET DRAINAGE DISTRICT
CHEVRON USA, INC.
R.A. = 743,415 SQ. FT.
17.066 ACRES

PORTION OF LOT 843
SUNSET DRAINAGE DISTRICT
CHEVRON USA, INC.
ST. CHARLES PARISH
R.A. = 103,370 SQ. FT.
2.373 ACRES

PORTION OF LOT 844
SUNSET DRAINAGE DISTRICT
CASEY BERGERON MILLETT
R.A. = 42,085 SQ. FT.
0.966 ACRES

842

ELEVATIONS OR COORDINATES BASED ON:
DESIGNATION: BA01 SM01
PID: DH3816
STATE/COUNTY: LA/ST. CHARLES PARISH
USGS QUAD: LULING (1992)
NAD 83 (2007): 29°55'01.64"(N) 90°18'58.55"(W) ADJUSTED
NAVD 88: 1.74 (METERS) 5.70 (FEET)
GPS OBS: 2006.81
RETRIEVAL DATE: DECEMBER 8, 2010

BEARINGS SHOWN HEREON ARE GRID
BEARINGS BASED ON THE LOUISIANA STATE
PLANE COORDINATE SYSTEM SOUTH ZONE
NAD 83 (2007).

LEGEND

- REQUIRED RIGHT OF WAY LINE
- PROPERTY LINE
- LOT LINE
- LIMITS OF CONSTRUCTION
- EXISTING RIGHT OF WAY LINE
- SECTION LINE
- DRAINAGE SERVITUDE
- EXISTING SERVITUDE

PARCEL	OWNER	ACQUISITION	AREA	ESTATE TYPE
14-1-R-2	CHEVRON USA, INC. ST. CHARLES PARISH	C.O.B. VVV PG. 305 ENTRY NO. 8618 C.O.B. 425 PG. 196 ENTRY NO. 151233	1.252 AC.	SERVITUDE
18-2	CASEY BERGERON MILLETT	C.O.B. 776 PG. 173 ENTRY NO. 381772	0.326 AC.	SERVITUDE
18-1	UNKNOWN OWNER	C.O.B. PG. ENTRY NO.	0.133 AC.	SERVITUDE

I CERTIFY THAT THIS PLAT REPRESENTS AN ACTUAL ROUTE SURVEY MADE BY ME, OR BY THOSE UNDER MY DIRECTION AND COMPLIES WITH THE REQUIREMENTS OF LOUISIANA'S "STANDARDS OF PRACTICE FOR BOUNDARY SURVEYS" FOR A CLASS D ROUTE SURVEY SPECIFICALLY CHAPTER 2909 - ROUTE SURVEY.

RESIDUAL ACREAGE NOTE
RESIDUAL ACREAGE'S SHOWN ARE CALCULATED FOR INFORMATION PURPOSES ONLY.
THE RESIDUAL ACREAGE'S ARE SUBJECT TO REVIEW AND VERIFICATION BY TITLE AND SURVEY.

DATE	DESCRIPTION	BY
3/10/2016	REVISED ACQUISITION BLOCK	T.P.T.
2/12/2016	REVISED PARCEL 14-1 INTO PARCEL 14-1-R-1 ADDED PARCEL 14-1-R-2	T.P.T.

LAFORCHE BASIN LEVEE DISTRICT
AND
PARISH OF ST. CHARLES

RIGHT OF WAY MAP
WEST BANK HURRICANE PROTECTION LEVEE
SUNSET DRAINAGE DISTRICT LEVEE
ST. CHARLES PARISH, LOUISIANA
STA. 830+00.00 TO 962+07.17 (NORTH SECTION)
10+00.00 TO 310+00.00 (SOUTH SECTION)

 RIVERLANDS SURVEYING COMPANY 505 HEMLOCK STREET LAFAYETTE, LA 70508 1-800-248-6982 985-652-0356	 STEPHEN P. FLYNN, P.L.S. REGISTERED PROFESSIONAL LAND SURVEYOR	
DATE: 10/6/2015 100% DRAWN BY: T.P.T.	SCALE: 1" = 50' COMPUTED BY: S.P.F.	SHEET NO. 18